

Project: Weld County, CO (NAD 83)
 Site: Sec. 20-T6N-R62W (Wells Ranch AE PAD)
 Well: Wells Ranch AE20-64-1HN
 Wellbore: Plan A
 Design: Final Surveys

Noble Energy



Halliburton Energy Services, Inc. ("Halliburton") recently completed directional drilling and MWD operations at the Wells Ranch AE20-63-1HN well located at Weld County, CO. At the conclusion of the job Halliburton performed a final survey on the well. Noble Energy has requested that Halliburton provide them the distances from BHL to section lines from that final survey to allow Noble Energy to meet its requirements under Colorado law. These distances are generated by a mathematical algorithm based on rough data collected after the well is drilled. Halliburton considers it to be a rough estimate only and it is not to be relied upon in any application where accurate data is required. In consideration for Halliburton releasing this data to Noble Energy, Noble Energy agrees to release Halliburton from any consequences of it or anyone else relying on such data.

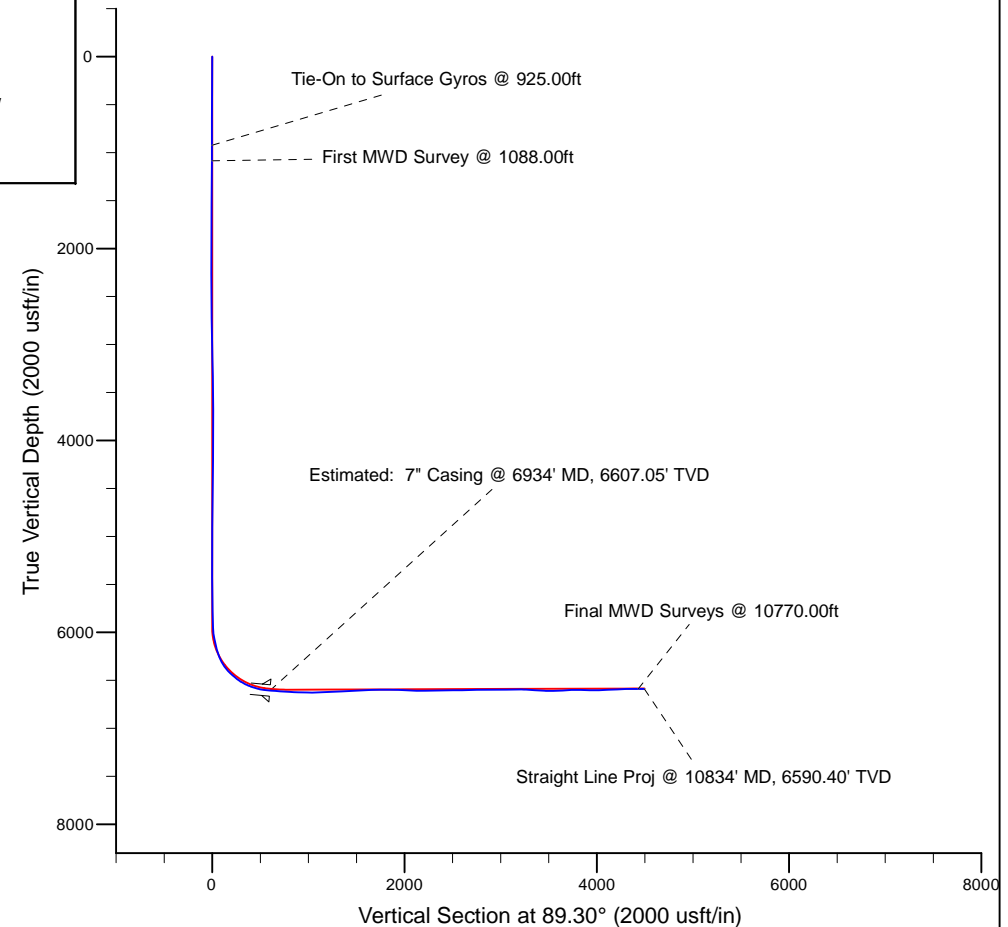
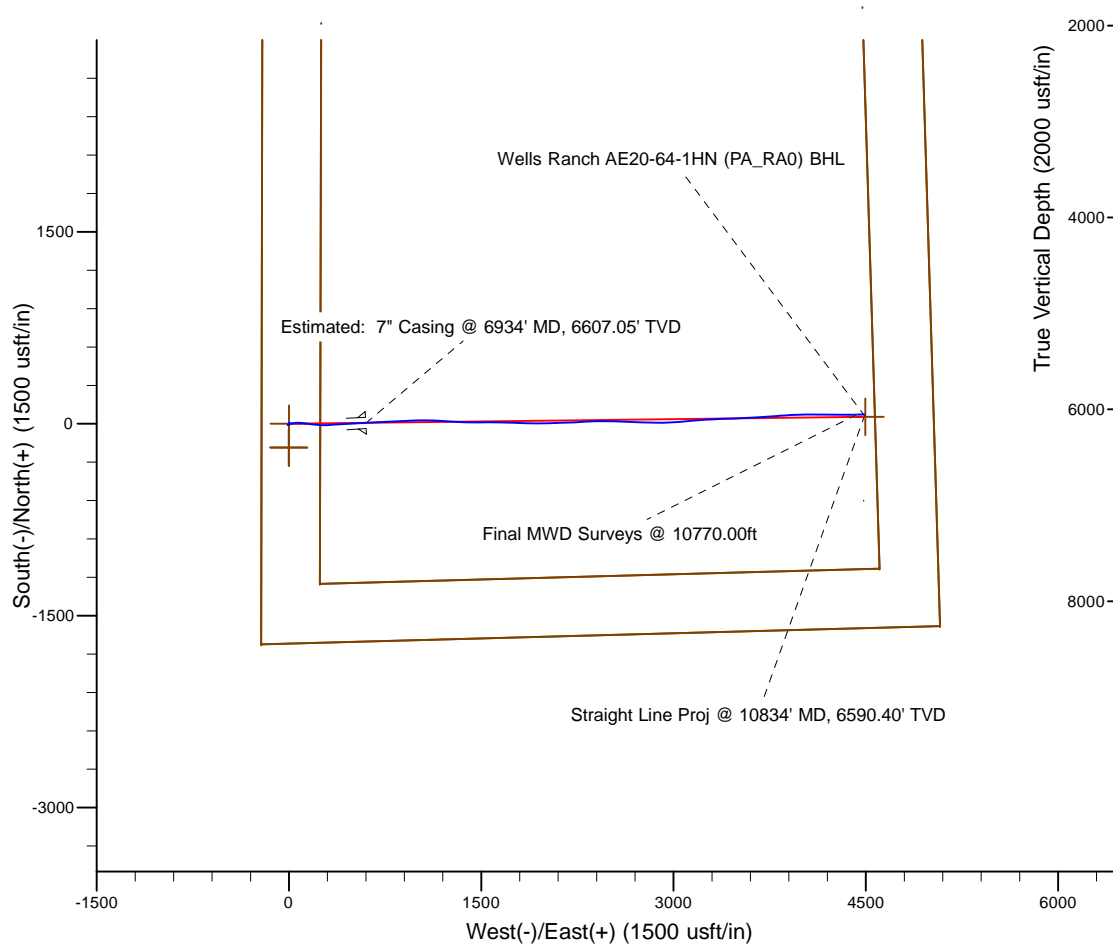
Platted SHL: 1718' FSL, 215' FWL
 Platted Lat/Long: 40.46968 N, 104.35532 W
 Location: Sec. 20-T6N-R62W

7" Casing: ~1706.22' FSL, ~815.15' FWL
 Lat/Long: 40° 28' 10.833 N, 104° 21' 11.373 W
 State Planes - CO Northern: 1,416,006.62' N, 3,319,069.89' E
 Location: Sec. 20-T6N-R63W

BHL: ~1669.82' FSL, ~535.14' FEL
 Lat/Long: 40° 28' 11.003 N, 104° 20' 20.990 W
 State Planes - CO Northern: 1,416,074.41' N, 3,322,963.17' E
 Location: Sec. 20-T6N-R63W

LEGEND

- △ Wells Ranch AE20-64-1HN, Plan A, Rev A0 V0
- Final Surveys



WELL DETAILS: Wells Ranch AE20-64-1HN	
Ground Level: 4785.00 RKB 24 ft. @ 4785.00usft (H&P 343)	
Design: Final Surveys (Wells Ranch AE20-64-1HN/Plan A)	
Created By: Fred Hartmann	Date: 10/16/2013

Noble Energy

Weld County, CO (NAD 83)

Sec. 20-T6N-R62W (Wells Ranch AE PAD)

Wells Ranch AE20-64-1HN - A6

Design: Final Surveys

Sperry Drilling Services

16 October, 2013

Well Coordinates: 1,416,000.34 N, 3,318,468.71 E (40° 28' 10.85" N, 104° 21' 19.15" W)

Ground Level: 4,785.00 usft

Local Coordinate Origin:

Centered on Well Wells Ranch AE20-64-1HN - Slot A6

Viewing Datum:

RKB 24 ft. @ 4785.00usft (H&P 343)

TVDs to System:

N

North Reference:

Grid

Unit System:

API - US Survey Feet - Custom

Geodetic Scale Factor Applied

Version: 5000.1 Build: 70

HALLIBURTON

Design Report for Wells Ranch AE20-64-1HN - Final Surveys

Measured Depth (usft)	Inclination (°)	Azimuth (°)	Vertical Depth (usft)	+N/-S (usft)	+E/-W (usft)	Vertical Section (usft)	Dogleg Rate (°/100usft)
0.00	0.00	0.00	0.00	0.00	0.00	0.00	0.00
370.00	0.80	205.23	369.99	-2.34	-1.10	-1.13	0.22
645.00	0.30	191.63	644.97	-4.78	-2.06	-2.12	0.19
925.00	0.20	162.73	924.97	-5.96	-2.07	-2.14	0.06
Tie-On to Surface Gyros @ 925.00ft							
1,088.00	0.43	333.23	1,087.97	-5.69	-2.26	-2.33	0.39
First MWD Survey @ 1088.00ft							
1,181.00	0.56	306.42	1,180.97	-5.11	-2.78	-2.84	0.28
1,273.00	0.50	285.83	1,272.96	-4.73	-3.53	-3.59	0.22
1,366.00	0.56	257.39	1,365.96	-4.72	-4.36	-4.42	0.29
1,460.00	0.39	261.91	1,459.96	-4.86	-5.13	-5.19	0.19
1,552.00	0.40	252.78	1,551.95	-5.00	-5.74	-5.81	0.07
1,644.00	0.33	271.98	1,643.95	-5.09	-6.32	-6.38	0.15
1,735.00	0.22	284.67	1,734.95	-5.04	-6.75	-6.81	0.14
1,828.00	0.35	272.72	1,827.95	-4.98	-7.20	-7.26	0.15
1,923.00	0.59	244.66	1,922.95	-5.17	-7.94	-8.00	0.34
2,018.00	0.69	240.40	2,017.94	-5.67	-8.87	-8.94	0.12
2,113.00	0.70	211.48	2,112.93	-6.44	-9.68	-9.75	0.37
2,208.00	0.83	199.59	2,207.93	-7.59	-10.21	-10.30	0.22
2,303.00	0.80	121.52	2,302.92	-8.58	-9.87	-9.98	1.08
2,397.00	0.62	140.45	2,396.91	-9.32	-8.99	-9.10	0.31
2,492.00	1.26	80.32	2,491.90	-9.54	-7.63	-7.75	1.15
2,587.00	1.05	82.81	2,586.88	-9.25	-5.74	-5.85	0.23
2,682.00	1.12	85.50	2,681.86	-9.07	-3.95	-4.06	0.09
2,777.00	0.88	66.98	2,776.85	-8.71	-2.35	-2.46	0.42
2,872.00	0.68	65.71	2,871.84	-8.20	-1.17	-1.27	0.21
2,967.00	0.93	55.56	2,966.83	-7.53	-0.02	-0.11	0.30
3,062.00	0.77	57.37	3,061.82	-6.75	1.15	1.07	0.17
3,157.00	0.92	50.91	3,156.81	-5.92	2.28	2.21	0.19
3,252.00	0.92	55.11	3,251.80	-5.00	3.50	3.44	0.07
3,347.00	1.79	50.06	3,346.77	-3.62	5.26	5.22	0.92
3,442.00	1.45	60.66	3,441.73	-2.07	7.45	7.42	0.48
3,632.00	0.33	102.52	3,631.71	-1.02	10.08	10.07	0.64
3,822.00	0.25	101.45	3,821.71	-1.22	11.02	11.00	0.04
4,012.00	0.22	334.61	4,011.71	-0.97	11.27	11.26	0.22
4,202.00	0.37	245.24	4,201.70	-0.90	10.56	10.54	0.23
4,391.00	1.46	281.09	4,390.68	-0.69	7.64	7.63	0.62
4,486.00	0.96	291.00	4,485.66	-0.17	5.71	5.71	0.57
4,675.00	1.13	322.86	4,674.63	1.88	3.10	3.13	0.32
4,866.00	0.18	239.20	4,865.61	3.23	1.71	1.75	0.59
5,055.00	0.70	277.99	5,054.61	3.24	0.31	0.35	0.30
5,246.00	0.12	69.73	5,245.60	3.47	-0.66	-0.61	0.42
5,436.00	0.44	134.80	5,435.60	3.03	0.05	0.08	0.21
5,625.00	0.84	134.32	5,624.59	1.55	1.55	1.57	0.21
5,857.00	0.66	107.92	5,856.57	-0.05	4.04	4.04	0.17
6,002.00	6.33	71.90	6,001.25	2.17	12.44	12.47	4.01
6,050.00	10.24	88.21	6,048.74	3.13	19.23	19.26	9.43
6,097.00	12.20	85.71	6,094.84	3.63	28.35	28.40	4.30
6,145.00	14.02	79.23	6,141.59	5.10	39.12	39.18	4.87
6,192.00	14.94	82.79	6,187.10	6.92	50.73	50.81	2.72

Design Report for Wells Ranch AE20-64-1HN - Final Surveys

Measured Depth (usft)	Inclination (°)	Azimuth (°)	Vertical Depth (usft)	+N/-S (usft)	+E/-W (usft)	Vertical Section (usft)	Dogleg Rate (°/100usft)
6,287.00	23.96	92.97	6,276.61	7.46	82.22	82.30	10.11
6,335.00	29.80	95.90	6,319.41	5.73	103.83	103.89	12.47
6,382.00	35.88	96.82	6,358.88	2.89	129.15	129.17	12.98
6,430.00	42.28	97.93	6,396.12	-1.01	159.14	159.11	13.41
6,477.00	46.72	97.30	6,429.63	-5.37	191.78	191.70	9.49
6,525.00	49.19	93.53	6,461.78	-8.71	227.26	227.13	7.78
6,572.00	53.40	91.24	6,491.17	-10.21	263.89	263.75	9.73
6,620.00	58.71	87.18	6,517.97	-9.62	303.68	303.54	13.10
6,667.00	64.02	85.65	6,540.49	-7.03	344.83	344.72	11.65
6,715.00	68.31	85.59	6,559.88	-3.68	388.60	388.53	8.94
6,761.00	71.94	86.91	6,575.52	-0.85	431.76	431.72	8.34
6,809.00	75.68	88.28	6,588.90	1.08	477.81	477.78	8.26
6,887.00	84.13	87.35	6,602.56	4.01	554.47	554.48	10.90
6,934.00	84.91	87.08	6,607.05	6.28	601.20	601.23	1.74
Estimated: 7" Casing @ 6934' MD, 6607.05' TVD							
7,041.00	86.67	86.48	6,614.91	12.27	707.74	707.84	1.74
7,134.00	86.67	87.23	6,620.31	17.37	800.44	800.59	0.81
7,229.00	87.78	87.16	6,624.91	22.01	895.22	895.42	1.17
7,324.00	88.77	87.68	6,627.77	26.28	990.07	990.32	1.18
7,372.00	89.75	89.74	6,628.39	27.36	1,038.06	1,038.31	4.75
7,419.00	92.65	90.78	6,627.41	27.15	1,085.04	1,085.29	6.55
7,467.00	93.09	93.86	6,625.00	25.21	1,132.93	1,133.16	6.47
7,514.00	94.14	93.05	6,622.04	22.38	1,179.75	1,179.94	2.82
7,609.00	91.29	94.28	6,617.54	16.32	1,274.44	1,274.55	3.27
7,704.00	91.11	90.97	6,615.55	11.97	1,369.31	1,369.35	3.49
7,798.00	94.41	89.70	6,611.02	11.42	1,463.18	1,463.21	3.76
7,893.00	93.73	89.97	6,604.28	11.69	1,557.94	1,557.97	0.77
7,988.00	90.96	90.60	6,600.39	11.22	1,652.85	1,652.86	2.99
8,083.00	91.14	93.22	6,598.65	8.05	1,747.77	1,747.74	2.76
8,178.00	89.26	91.18	6,598.32	4.41	1,842.69	1,842.61	2.92
8,273.00	87.32	89.39	6,601.15	3.93	1,937.64	1,937.55	2.78
8,368.00	87.29	89.15	6,605.62	5.14	2,032.53	2,032.44	0.25
8,463.00	88.86	88.19	6,608.81	7.35	2,127.45	2,127.38	1.94
8,558.00	90.34	87.06	6,609.48	11.28	2,222.36	2,222.33	1.96
8,653.00	91.51	87.04	6,607.94	16.17	2,317.22	2,317.24	1.23
8,747.00	91.20	88.14	6,605.72	20.12	2,411.11	2,411.17	1.22
8,842.00	90.89	90.33	6,603.99	21.39	2,506.08	2,506.15	2.33
8,937.00	90.77	92.85	6,602.61	18.76	2,601.02	2,601.06	2.66
9,032.00	91.27	93.20	6,600.92	13.74	2,695.87	2,695.84	0.64
9,127.00	90.03	92.82	6,599.84	8.76	2,790.74	2,790.63	1.37
9,222.00	90.80	89.13	6,599.15	7.14	2,885.70	2,885.57	3.97
9,317.00	90.56	86.71	6,598.03	10.59	2,980.63	2,980.53	2.56
9,412.00	91.36	84.68	6,596.43	17.72	3,075.34	3,075.33	2.30
9,507.00	90.19	85.23	6,595.15	26.07	3,169.96	3,170.04	1.36
9,602.00	86.88	86.60	6,597.58	32.83	3,264.67	3,264.83	3.77
9,697.00	85.99	88.11	6,603.48	37.21	3,359.38	3,359.59	1.84
9,792.00	86.85	88.17	6,609.42	40.29	3,454.15	3,454.38	0.91
9,887.00	92.10	85.70	6,610.29	45.37	3,548.97	3,549.26	6.11
9,982.00	92.99	86.79	6,606.07	51.58	3,643.67	3,644.02	1.48
10,076.00	92.10	87.43	6,601.89	56.32	3,737.45	3,737.86	1.17
10,171.00	89.07	84.90	6,600.92	62.67	3,832.22	3,832.70	4.15

Design Report for Wells Ranch AE20-64-1HN - Final Surveys

Measured Depth (usft)	Inclination (°)	Azimuth (°)	Vertical Depth (usft)	+N/-S (usft)	+E/-W (usft)	Vertical Section (usft)	Dogleg Rate (°/100usft)
10,266.00	89.11	87.13	6,602.43	69.27	3,926.97	3,927.52	2.35
10,361.00	91.33	89.30	6,602.07	72.23	4,021.91	4,022.49	3.27
10,456.00	92.16	90.72	6,599.18	72.21	4,116.86	4,117.44	1.73
10,551.00	93.21	89.52	6,594.73	72.01	4,211.76	4,212.32	1.68
10,646.00	91.23	91.05	6,591.05	71.54	4,306.68	4,307.23	2.63
10,770.00	89.69	88.33	6,590.05	72.21	4,430.65	4,431.21	2.52
Final MWD Surveys @ 10770.00ft							
10,834.00	89.69	88.33	6,590.40	74.08	4,494.63	4,495.20	0.00
Straight Line Proj @ 10834' MD, 6590.40' TVD							

Design Annotations

Measured Depth (usft)	Vertical Depth (usft)	Local Coordinates		Comment
		+N/-S (usft)	+E/-W (usft)	
925.00	924.97	-5.96	-2.07	Tie-On to Surface Gyros @ 925.00ft
1,088.00	1,087.97	-5.69	-2.26	First MWD Survey @ 1088.00ft
10,770.00	6,590.05	72.21	4,430.65	Final MWD Surveys @ 10770.00ft
10,834.00	6,590.40	74.08	4,494.63	Straight Line Proj @ 10834' MD, 6590.40' TVD

Vertical Section Information

Angle Type	Target	Azimuth (°)	Origin Type	Origin		Start TVD (usft)
				+N/_S (usft)	+E/-W (usft)	
Target	Wells Ranch AE20-64-1HN (PA_RA0) BHL	89.30	Slot	0.00	0.00	0.00

Survey tool program

From (usft)	To (usft)	Survey/Plan	Survey Tool
370.00	925.00	Surface Gyros	Flexi-Shot
1,088.00	6,887.00	MWD Surveys - Vert/Build	MWD
7,041.00	10,770.00	MWD Surveys - Lateral	MWD

Casing Details

Measured Depth (usft)	Vertical Depth (usft)	Name	Casing Diameter (")	Hole Diameter (")
6,934.00	6,607.05	Estimated: 7" Casing @ 6934' MD, 6607.05' TVD	7	8-3/4

Design Report for Wells Ranch AE20-64-1HN - Final Surveys

Wellbore Targets

Target Name - hit/miss target - Shape	Dip Angle (°)	Dip Dir. (°)	TVD (usft)	+N/-S (usft)	+E/-W (usft)	Northing (usft)	Easting (usft)	Latitude	Longitude
Wells Ranch AE20-64- - actual wellpath hits target center - Point	0.00	0.00	0.00	0.00	0.00	1,416,000.34	3,318,468.71	40° 28' 10.848 N	104° 21' 19.152 W
Wells Ranch AE (SL) F - actual wellpath misses target center by 187.36usft at 0.00usft MD (0.00 TVD, 0.00 N, 0.00 E) - Polygon	0.00	0.00	-24.00	-185.82	-0.38	1,415,814.53	3,318,468.33	40° 28' 9.012 N	104° 21' 19.188 W
Point 1			-24.00	-1,536.69	-216.70	1,414,277.89	3,318,251.63		
Point 2			-24.00	-1,394.93	5,079.85	1,414,419.65	3,323,547.99		
Point 3			-24.00	3,915.17	4,921.18	1,419,729.56	3,323,389.33		
Point 4			-24.00	3,764.67	-207.18	1,419,579.06	3,318,261.15		
Point 5			-24.00	-1,536.69	-216.70	1,414,277.89	3,318,251.63		
Wells Ranch AE (SB) F - actual wellpath misses target center by 187.36usft at 0.00usft MD (0.00 TVD, 0.00 N, 0.00 E) - Polygon	0.00	0.00	-24.00	-185.82	-0.38	1,415,814.53	3,318,468.33	40° 28' 9.012 N	104° 21' 19.188 W
Point 1			-24.00	-1,064.69	243.30	1,414,749.87	3,318,711.62		
Point 2			-24.00	-945.93	4,607.35	1,414,868.63	3,323,075.51		
Point 3			-24.00	3,443.17	4,474.83	1,419,257.57	3,322,943.00		
Point 4			-24.00	3,319.17	251.02	1,419,133.58	3,318,719.34		
Point 5			-24.00	-1,064.69	243.30	1,414,749.87	3,318,711.62		
Wells Ranch AE20-64- - actual wellpath misses target center by 19.97usft at 10834.00usft MD (6590.40 TVD, 74.08 N, 4494.63 E) - Point	0.00	0.00	6,585.30	54.81	4,495.93	1,416,055.15	3,322,964.48	40° 28' 10.812 N	104° 20' 20.976 W

Directional Difficulty Index

Average Dogleg over Survey:	1.84 °/100usft	Maximum Dogleg over Survey:	13.41 °/100usft at 6,430.00 usft
Net Tortousity applicable to Plans:	1.01 °/100usft	Directional Difficulty Index:	6.172

Audit Info

North Reference Sheet for Sec. 20-T6N-R62W (Wells Ranch AE PAD) - Wells Ranch AE20-64-1HN -

All data is in US Feet unless otherwise stated. Directions and Coordinates are relative to Grid North Reference.

Vertical Depths are relative to RKB 24 ft. @ 4785.00usft (H&P 343). Northing and Easting are relative to Wells Ranch AE20-64-1HN - Slot A6

Coordinate System is US State Plane 1983, Colorado Northern Zone using datum North American Datum 1983, ellipsoid GRS 1980

Projection method is Lambert Conformal Conic (2 parallel)

Central Meridian is 105° 30' 0.000 W°, Longitude Origin:0° 0' 0.000 E°, Latitude Origin:40° 47' 0.000 N°

False Easting: 3,000,000.00usft, False Northing: 1,000,000.00usft, Scale Reduction: 0.99996413

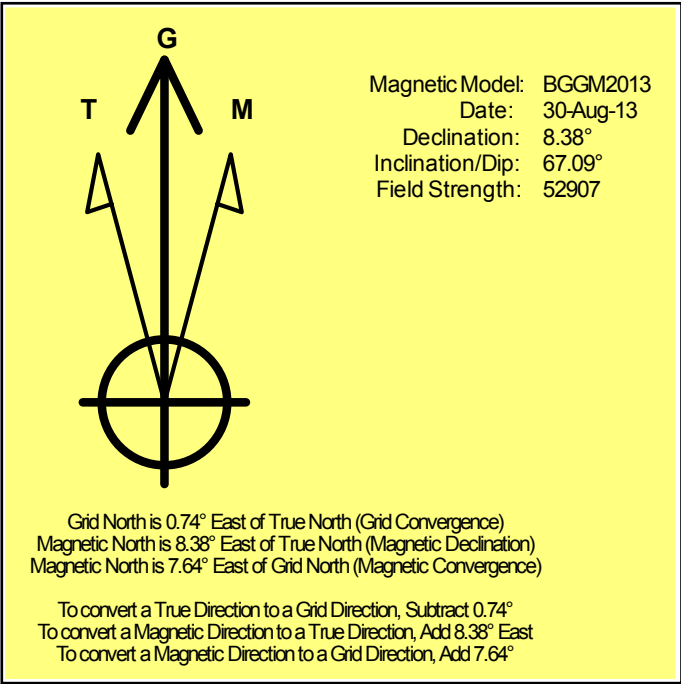
Grid Coordinates of Well: 1,416,000.34 usft N, 3,318,468.71 usft E

Geographical Coordinates of Well: 40° 28' 10.85" N, 104° 21' 19.15" W

Grid Convergence at Surface is: 0.74°

Based upon Minimum Curvature type calculations, at a Measured Depth of 10,834.00usft the Bottom Hole Displacement is 4,495.24usft in the Direction of 89.06° (Grid).

Magnetic Convergence at surface is: -7.64° (30 August 2013, , BGGM2013)



Noble Energy

Weld County, CO (NAD 83)

Sec. 20-T6N-R62W (Wells Ranch AE PAD)

Wells Ranch AE20-64-1HN - A6

Design: Final Surveys

Sperry Drilling Services

Geodetic Report

16 October, 2013

Well Coordinates: 1,416,000.34 N, 3,318,468.71 E (40° 28' 10.85" N, 104° 21' 19.15" W)

Ground Level: 4,785.00 usft

Local Coordinate Origin:

Viewing Datum:

TVDs to System:

North Reference:

Unit System:

Geodetic Scale Factor Applied

Version: 5000.1 Build: 70

Centered on Well Wells Ranch AE20-64-1HN - Slot A6

RKB 24 ft. @ 4785.00usft (H&P 343)

N

Grid

API - US Survey Feet - Custom

HALLIBURTON

Design Report for Wells Ranch AE20-64-1HN - Final Surveys

Measured			Vertical		Local Coordinates		Geographic Coordinates		UTM Coordinates	
Depth (usft)	Inclination (°)	Azimuth (°)	Depth (usft)		+N/-S (usft)	+E/-W (usft)	Latitude (usft)	Longitude (usft)	Northing (usft)	Easting (usft)
0.00	0.00	0.00	0.00		0.00	0.00	40° 28' 10.848 N	104° 21' 19.152 W	1,416,000.34	3,318,468.71
370.00	0.80	205.23	369.99		-2.34	-1.10	40° 28' 10.825 N	104° 21' 19.167 W	1,415,998.00	3,318,467.60
645.00	0.30	191.63	644.97		-4.78	-2.06	40° 28' 10.801 N	104° 21' 19.180 W	1,415,995.56	3,318,466.64
925.00	0.20	162.73	924.97		-5.96	-2.07	40° 28' 10.789 N	104° 21' 19.180 W	1,415,994.38	3,318,466.64
1,088.00	0.43	333.23	1,087.97		-5.69	-2.26	40° 28' 10.792 N	104° 21' 19.182 W	1,415,994.65	3,318,466.45
1,181.00	0.56	306.42	1,180.97		-5.11	-2.78	40° 28' 10.798 N	104° 21' 19.189 W	1,415,995.23	3,318,465.92
1,273.00	0.50	285.83	1,272.96		-4.73	-3.53	40° 28' 10.802 N	104° 21' 19.198 W	1,415,995.61	3,318,465.18
1,366.00	0.56	257.39	1,365.96		-4.72	-4.36	40° 28' 10.802 N	104° 21' 19.209 W	1,415,995.62	3,318,464.34
1,460.00	0.39	261.91	1,459.96		-4.86	-5.13	40° 28' 10.801 N	104° 21' 19.219 W	1,415,995.48	3,318,463.58
1,552.00	0.40	252.78	1,551.95		-5.00	-5.74	40° 28' 10.799 N	104° 21' 19.227 W	1,415,995.34	3,318,462.96
1,644.00	0.33	271.98	1,643.95		-5.09	-6.32	40° 28' 10.798 N	104° 21' 19.235 W	1,415,995.25	3,318,462.39
1,735.00	0.22	284.67	1,734.95		-5.04	-6.75	40° 28' 10.799 N	104° 21' 19.240 W	1,415,995.30	3,318,461.96
1,828.00	0.35	272.72	1,827.95		-4.98	-7.20	40° 28' 10.800 N	104° 21' 19.246 W	1,415,995.36	3,318,461.50
1,923.00	0.59	244.66	1,922.95		-5.17	-7.94	40° 28' 10.798 N	104° 21' 19.256 W	1,415,995.17	3,318,460.77
2,018.00	0.69	240.40	2,017.94		-5.67	-8.87	40° 28' 10.793 N	104° 21' 19.268 W	1,415,994.67	3,318,459.83
2,113.00	0.70	211.48	2,112.93		-6.44	-9.68	40° 28' 10.786 N	104° 21' 19.278 W	1,415,993.90	3,318,459.03
2,208.00	0.83	199.59	2,207.93		-7.59	-10.21	40° 28' 10.774 N	104° 21' 19.285 W	1,415,992.75	3,318,458.50
2,303.00	0.80	121.52	2,302.92		-8.58	-9.87	40° 28' 10.764 N	104° 21' 19.281 W	1,415,991.76	3,318,458.83
2,397.00	0.62	140.45	2,396.91		-9.32	-8.99	40° 28' 10.757 N	104° 21' 19.270 W	1,415,991.02	3,318,459.71
2,492.00	1.26	80.32	2,491.90		-9.54	-7.63	40° 28' 10.755 N	104° 21' 19.252 W	1,415,990.80	3,318,461.07
2,587.00	1.05	82.81	2,586.88		-9.25	-5.74	40° 28' 10.757 N	104° 21' 19.228 W	1,415,991.09	3,318,462.96
2,682.00	1.12	85.50	2,681.86		-9.07	-3.95	40° 28' 10.759 N	104° 21' 19.205 W	1,415,991.27	3,318,464.75
2,777.00	0.88	66.98	2,776.85		-8.71	-2.35	40° 28' 10.762 N	104° 21' 19.184 W	1,415,991.63	3,318,466.35
2,872.00	0.68	65.71	2,871.84		-8.20	-1.17	40° 28' 10.767 N	104° 21' 19.169 W	1,415,992.14	3,318,467.54
2,967.00	0.93	55.56	2,966.83		-7.53	-0.02	40° 28' 10.774 N	104° 21' 19.154 W	1,415,992.81	3,318,468.69
3,062.00	0.77	57.37	3,061.82		-6.75	1.15	40° 28' 10.781 N	104° 21' 19.138 W	1,415,993.59	3,318,469.86
3,157.00	0.92	50.91	3,156.81		-5.92	2.28	40° 28' 10.789 N	104° 21' 19.123 W	1,415,994.42	3,318,470.99
3,252.00	0.92	55.11	3,251.80		-5.00	3.50	40° 28' 10.798 N	104° 21' 19.108 W	1,415,995.34	3,318,472.21
3,347.00	1.79	50.06	3,346.77		-3.62	5.26	40° 28' 10.812 N	104° 21' 19.085 W	1,415,996.72	3,318,473.97
3,442.00	1.45	60.66	3,441.73		-2.07	7.45	40° 28' 10.826 N	104° 21' 19.056 W	1,415,998.27	3,318,476.15
3,632.00	0.33	102.52	3,631.71		-1.02	10.08	40° 28' 10.837 N	104° 21' 19.022 W	1,415,999.32	3,318,478.78
3,822.00	0.25	101.45	3,821.71		-1.22	11.02	40° 28' 10.835 N	104° 21' 19.010 W	1,415,999.12	3,318,479.72
4,012.00	0.22	334.61	4,011.71		-0.97	11.27	40° 28' 10.837 N	104° 21' 19.006 W	1,415,999.37	3,318,479.97
4,202.00	0.37	245.24	4,201.70		-0.90	10.56	40° 28' 10.838 N	104° 21' 19.016 W	1,415,999.44	3,318,479.26
4,391.00	1.46	281.09	4,390.68		-0.69	7.64	40° 28' 10.840 N	104° 21' 19.053 W	1,415,999.65	3,318,476.34
4,486.00	0.96	291.00	4,485.66		-0.17	5.71	40° 28' 10.846 N	104° 21' 19.078 W	1,416,000.17	3,318,474.41
4,675.00	1.13	322.86	4,674.63		1.88	3.10	40° 28' 10.866 N	104° 21' 19.112 W	1,416,002.22	3,318,471.81
4,866.00	0.18	239.20	4,865.61		3.23	1.71	40° 28' 10.880 N	104° 21' 19.129 W	1,416,003.57	3,318,470.42
5,055.00	0.70	277.99	5,054.61		3.24	0.31	40° 28' 10.880 N	104° 21' 19.147 W	1,416,003.58	3,318,469.02
5,246.00	0.12	69.73	5,245.60		3.47	-0.66	40° 28' 10.882 N	104° 21' 19.160 W	1,416,003.81	3,318,468.05
5,436.00	0.44	134.80	5,435.60		3.03	0.05	40° 28' 10.878 N	104° 21' 19.151 W	1,416,003.36	3,318,468.75
5,625.00	0.84	134.32	5,624.59		1.55	1.55	40° 28' 10.863 N	104° 21' 19.132 W	1,416,001.89	3,318,470.26

Design Report for Wells Ranch AE20-64-1HN - Final Surveys

Measured			Vertical	Local Coordinates		Geographic Coordinates		UTM Coordinates	
Depth	Inclination	Azimuth	Depth	+N/-S	+E/-W	Latitude	Longitude	Northing	Easting
(usft)	(°)	(°)	(usft)	(usft)	(usft)	(usft)	(usft)	(usft)	(usft)
5,857.00	0.66	107.92	5,856.57	-0.05	4.04	40° 28' 10.847 N	104° 21' 19.100 W	1,416,000.29	3,318,472.75
6,002.00	6.33	71.90	6,001.25	2.17	12.44	40° 28' 10.868 N	104° 21' 18.991 W	1,416,002.51	3,318,481.15
6,050.00	10.24	88.21	6,048.74	3.13	19.23	40° 28' 10.876 N	104° 21' 18.903 W	1,416,003.47	3,318,487.93
6,097.00	12.20	85.71	6,094.84	3.63	28.35	40° 28' 10.880 N	104° 21' 18.785 W	1,416,003.97	3,318,497.06
6,145.00	14.02	79.23	6,141.59	5.10	39.12	40° 28' 10.893 N	104° 21' 18.645 W	1,416,005.44	3,318,507.83
6,192.00	14.94	82.79	6,187.10	6.92	50.73	40° 28' 10.910 N	104° 21' 18.495 W	1,416,007.26	3,318,519.43
6,287.00	23.96	92.97	6,276.61	7.46	82.22	40° 28' 10.911 N	104° 21' 18.087 W	1,416,007.80	3,318,550.92
6,335.00	29.80	95.90	6,319.41	5.73	103.83	40° 28' 10.891 N	104° 21' 17.808 W	1,416,006.07	3,318,572.53
6,382.00	35.88	96.82	6,358.88	2.89	129.15	40° 28' 10.860 N	104° 21' 17.481 W	1,416,003.23	3,318,597.85
6,430.00	42.28	97.93	6,396.12	-1.01	159.14	40° 28' 10.818 N	104° 21' 17.093 W	1,415,999.33	3,318,627.84
6,477.00	46.72	97.30	6,429.63	-5.37	191.78	40° 28' 10.770 N	104° 21' 16.672 W	1,415,994.97	3,318,660.48
6,525.00	49.19	93.53	6,461.78	-8.71	227.26	40° 28' 10.733 N	104° 21' 16.213 W	1,415,991.63	3,318,695.95
6,572.00	53.40	91.24	6,491.17	-10.21	263.89	40° 28' 10.713 N	104° 21' 15.740 W	1,415,990.13	3,318,732.59
6,620.00	58.71	87.18	6,517.97	-9.62	303.68	40° 28' 10.714 N	104° 21' 15.225 W	1,415,990.72	3,318,772.37
6,667.00	64.02	85.65	6,540.49	-7.03	344.83	40° 28' 10.734 N	104° 21' 14.692 W	1,415,993.31	3,318,813.53
6,715.00	68.31	85.59	6,559.88	-3.68	388.60	40° 28' 10.762 N	104° 21' 14.125 W	1,415,996.66	3,318,857.29
6,761.00	71.94	86.91	6,575.52	-0.85	431.76	40° 28' 10.784 N	104° 21' 13.566 W	1,415,999.49	3,318,900.45
6,809.00	75.68	88.28	6,588.90	1.08	477.81	40° 28' 10.798 N	104° 21' 12.970 W	1,416,001.42	3,318,946.49
6,887.00	84.13	87.35	6,602.56	4.01	554.47	40° 28' 10.817 N	104° 21' 11.978 W	1,416,004.35	3,319,023.16
6,934.00	84.91	87.08	6,607.05	6.28	601.20	40° 28' 10.833 N	104° 21' 11.373 W	1,416,006.62	3,319,069.89
7,041.00	86.67	86.48	6,614.91	12.27	707.74	40° 28' 10.879 N	104° 21' 9.994 W	1,416,012.61	3,319,176.42
7,134.00	86.67	87.23	6,620.31	17.37	800.44	40° 28' 10.917 N	104° 21' 8.793 W	1,416,017.71	3,319,269.12
7,229.00	87.78	87.16	6,624.91	22.01	895.22	40° 28' 10.951 N	104° 21' 7.566 W	1,416,022.35	3,319,363.89
7,324.00	88.77	87.68	6,627.77	26.28	990.07	40° 28' 10.981 N	104° 21' 6.338 W	1,416,026.62	3,319,458.74
7,372.00	89.75	89.74	6,628.39	27.36	1,038.06	40° 28' 10.986 N	104° 21' 5.717 W	1,416,027.70	3,319,506.72
7,419.00	92.65	90.78	6,627.41	27.15	1,085.04	40° 28' 10.978 N	104° 21' 5.110 W	1,416,027.49	3,319,553.71
7,467.00	93.09	93.86	6,625.00	25.21	1,132.93	40° 28' 10.952 N	104° 21' 4.490 W	1,416,025.55	3,319,601.60
7,514.00	94.14	93.05	6,622.04	22.38	1,179.75	40° 28' 10.918 N	104° 21' 3.885 W	1,416,022.72	3,319,648.42
7,609.00	91.29	94.28	6,617.54	16.32	1,274.44	40° 28' 10.846 N	104° 21' 2.661 W	1,416,016.66	3,319,743.10
7,704.00	91.11	90.97	6,615.55	11.97	1,369.31	40° 28' 10.791 N	104° 21' 1.434 W	1,416,012.31	3,319,837.96
7,798.00	94.41	89.70	6,611.02	11.42	1,463.18	40° 28' 10.774 N	104° 21' 0.220 W	1,416,011.76	3,319,931.83
7,893.00	93.73	89.97	6,604.28	11.69	1,557.94	40° 28' 10.764 N	104° 20' 58.994 W	1,416,012.03	3,320,026.59
7,988.00	90.96	90.60	6,600.39	11.22	1,652.85	40° 28' 10.747 N	104° 20' 57.766 W	1,416,011.56	3,320,121.50
8,083.00	91.14	93.22	6,598.65	8.05	1,747.77	40° 28' 10.704 N	104° 20' 56.539 W	1,416,008.39	3,320,216.42
8,178.00	89.26	91.18	6,598.32	4.41	1,842.69	40° 28' 10.656 N	104° 20' 55.311 W	1,416,004.75	3,320,311.33
8,273.00	87.32	89.39	6,601.15	3.93	1,937.64	40° 28' 10.639 N	104° 20' 54.083 W	1,416,004.27	3,320,406.28
8,368.00	87.29	89.15	6,605.62	5.14	2,032.53	40° 28' 10.639 N	104° 20' 52.855 W	1,416,005.48	3,320,501.16
8,463.00	88.86	88.19	6,608.81	7.35	2,127.45	40° 28' 10.648 N	104° 20' 51.627 W	1,416,007.69	3,320,596.08
8,558.00	90.34	87.06	6,609.48	11.28	2,222.36	40° 28' 10.675 N	104° 20' 50.398 W	1,416,011.62	3,320,690.98
8,653.00	91.51	87.04	6,607.94	16.17	2,317.22	40° 28' 10.711 N	104° 20' 49.170 W	1,416,016.51	3,320,785.84
8,747.00	91.20	88.14	6,605.72	20.12	2,411.11	40° 28' 10.738 N	104° 20' 47.955 W	1,416,020.46	3,320,879.73
8,842.00	90.89	90.33	6,603.99	21.39	2,506.08	40° 28' 10.738 N	104° 20' 46.726 W	1,416,021.73	3,320,974.69

Design Report for Wells Ranch AE20-64-1HN - Final Surveys

Measured Depth (usft)	Inclination (°)	Azimuth (°)	Vertical Depth (usft)	Local Coordinates		Geographic Coordinates		UTM Coordinates	
				+N/-S (usft)	+E/-W (usft)	Latitude (usft)	Longitude (usft)	Northing (usft)	Easting (usft)
8,937.00	90.77	92.85	6,602.61	18.76	2,601.02	40° 28' 10.700 N	104° 20' 45.498 W	1,416,019.09	3,321,069.63
9,032.00	91.27	93.20	6,600.92	13.74	2,695.87	40° 28' 10.638 N	104° 20' 44.271 W	1,416,014.08	3,321,164.48
9,127.00	90.03	92.82	6,599.84	8.76	2,790.74	40° 28' 10.577 N	104° 20' 43.045 W	1,416,009.09	3,321,259.34
9,222.00	90.80	89.13	6,599.15	7.14	2,885.70	40° 28' 10.549 N	104° 20' 41.817 W	1,416,007.48	3,321,354.30
9,317.00	90.56	86.71	6,598.03	10.59	2,980.63	40° 28' 10.571 N	104° 20' 40.588 W	1,416,010.93	3,321,449.22
9,412.00	91.36	84.68	6,596.43	17.72	3,075.34	40° 28' 10.629 N	104° 20' 39.361 W	1,416,018.06	3,321,543.93
9,507.00	90.19	85.23	6,595.15	26.07	3,169.96	40° 28' 10.699 N	104° 20' 38.136 W	1,416,026.41	3,321,638.55
9,602.00	86.88	86.60	6,597.58	32.83	3,264.67	40° 28' 10.754 N	104° 20' 36.909 W	1,416,033.17	3,321,733.26
9,697.00	85.99	88.11	6,603.48	37.21	3,359.38	40° 28' 10.785 N	104° 20' 35.683 W	1,416,037.55	3,321,827.97
9,792.00	86.85	88.17	6,609.42	40.29	3,454.15	40° 28' 10.803 N	104° 20' 34.457 W	1,416,040.63	3,321,922.73
9,887.00	92.10	85.70	6,610.29	45.37	3,548.97	40° 28' 10.841 N	104° 20' 33.229 W	1,416,045.70	3,322,017.55
9,982.00	92.99	86.79	6,606.07	51.58	3,643.67	40° 28' 10.890 N	104° 20' 32.003 W	1,416,051.92	3,322,112.24
10,076.00	92.10	87.43	6,601.89	56.32	3,737.45	40° 28' 10.925 N	104° 20' 30.789 W	1,416,056.65	3,322,206.02
10,171.00	89.07	84.90	6,600.92	62.67	3,832.22	40° 28' 10.975 N	104° 20' 29.562 W	1,416,063.01	3,322,300.79
10,266.00	89.11	87.13	6,602.43	69.27	3,926.97	40° 28' 11.028 N	104° 20' 28.335 W	1,416,069.61	3,322,395.53
10,361.00	91.33	89.30	6,602.07	72.23	4,021.91	40° 28' 11.045 N	104° 20' 27.106 W	1,416,072.57	3,322,490.47
10,456.00	92.16	90.72	6,599.18	72.21	4,116.86	40° 28' 11.033 N	104° 20' 25.877 W	1,416,072.55	3,322,585.42
10,551.00	93.21	89.52	6,594.73	72.01	4,211.76	40° 28' 11.019 N	104° 20' 24.650 W	1,416,072.35	3,322,680.31
10,646.00	91.23	91.05	6,591.05	71.54	4,306.68	40° 28' 11.002 N	104° 20' 23.422 W	1,416,071.88	3,322,775.23
10,770.00	89.69	88.33	6,590.05	72.21	4,430.65	40° 28' 10.992 N	104° 20' 21.818 W	1,416,072.55	3,322,899.20
10,834.00	89.69	88.33	6,590.40	74.08	4,494.63	40° 28' 11.003 N	104° 20' 20.990 W	1,416,074.41	3,322,963.17

Design Annotations

Measured Depth (usft)	Vertical Depth (usft)	Local Coordinates		Comment
		+N/-S (usft)	+E/-W (usft)	
925.00	924.97	-5.96	-2.07	Tie-On to Surface Gyros @ 925.00ft
1,088.00	1,087.97	-5.69	-2.26	First MWD Survey @ 1088.00ft
10,770.00	6,590.05	72.21	4,430.65	Final MWD Surveys @ 10770.00ft
10,834.00	6,590.40	74.08	4,494.63	Straight Line Proj @ 10834' MD, 6590.40' TVD

Vertical Section Information

Angle Type	Target	Azimuth (°)	Origin Type	Origin		Start TVD (usft)
				+N/_S (usft)	+E/-W (usft)	
Target	Wells Ranch AE20-64-1HN (PA_RA0) BHL	89.30	Slot	0.00	0.00	0.00

Design Report for Wells Ranch AE20-64-1HN - Final Surveys

Survey tool program

From (usft)	To (usft)	Survey/Plan	Survey Tool
370.00	925.00	Surface Gyros	Flexi-Shot
1,088.00	6,887.00	MWD Surveys - Vert/Build	MWD
7,041.00	10,770.00	MWD Surveys - Lateral	MWD

Casing Details

Measured Depth (usft)	Vertical Depth (usft)	Name	Casing Diameter (")	Hole Diameter (")
6,934.00	6,607.05	Estimated: 7" Casing @ 6934' MD, 6607.05' TVD	7	8-3/4

Design Targets

Shape	Target Name	TVD (')	Northing (')	Easting (')	+N/-S	+E/-W	Created	Updated
-------	-------------	------------	-----------------	----------------	-------	-------	---------	---------

Directional Difficulty Index

Average Dogleg over Survey:	1.84 °/100usft	Maximum Dogleg over Survey:	13.41 °/100usft at 6,430.00 usft
Net Tortousity applicable to Plans:	1.01 °/100usft	Directional Difficulty Index:	6.172

Audit Info

North Reference Sheet for Sec. 20-T6N-R62W (Wells Ranch AE PAD) - Wells Ranch AE20-64-1HN -

All data is in US Feet unless otherwise stated. Directions and Coordinates are relative to Grid North Reference.

Vertical Depths are relative to RKB 24 ft. @ 4785.00usft (H&P 343). Northing and Easting are relative to Wells Ranch AE20-64-1HN - Slot A6

Coordinate System is US State Plane 1983, Colorado Northern Zone using datum North American Datum 1983, ellipsoid GRS 1980

Projection method is Lambert Conformal Conic (2 parallel)

Central Meridian is 105° 30' 0.000 W°, Longitude Origin:0° 0' 0.000 E°, Latitude Origin:40° 47' 0.000 N°

False Easting: 3,000,000.00usft, False Northing: 1,000,000.00usft, Scale Reduction: 0.99996413

Grid Coordinates of Well: 1,416,000.34 usft N, 3,318,468.71 usft E

Geographical Coordinates of Well: 40° 28' 10.85" N, 104° 21' 19.15" W

Grid Convergence at Surface is: 0.74°

Based upon Minimum Curvature type calculations, at a Measured Depth of 10,834.00usft

the Bottom Hole Displacement is 4,495.24usft in the Direction of 89.06° (Grid).

Magnetic Convergence at surface is: -7.64° (30 August 2013, , BGGM2013)

