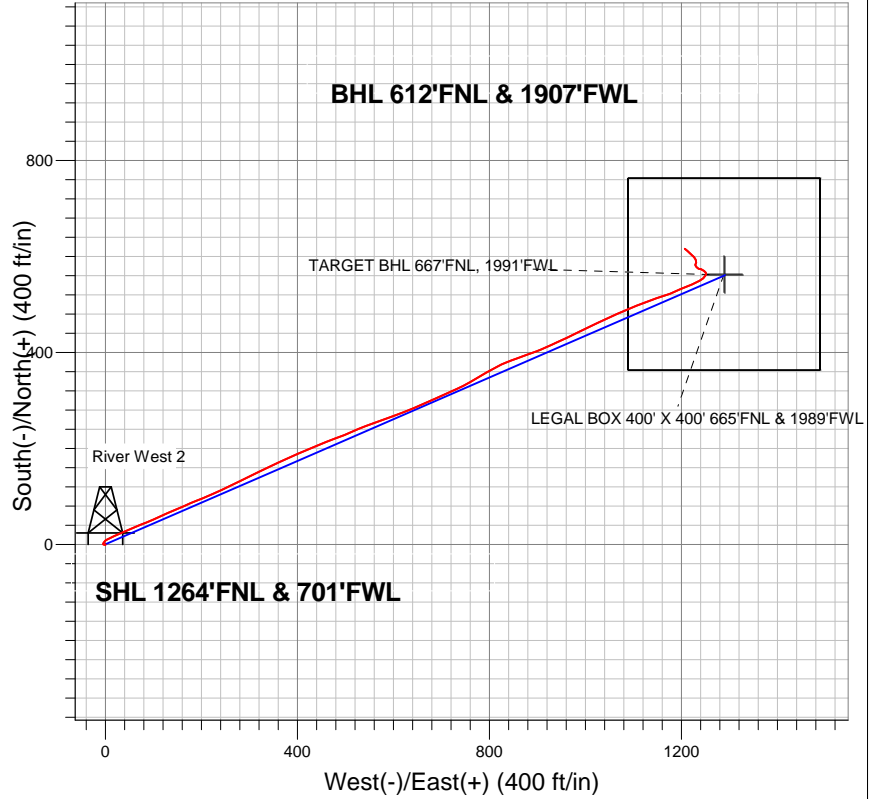
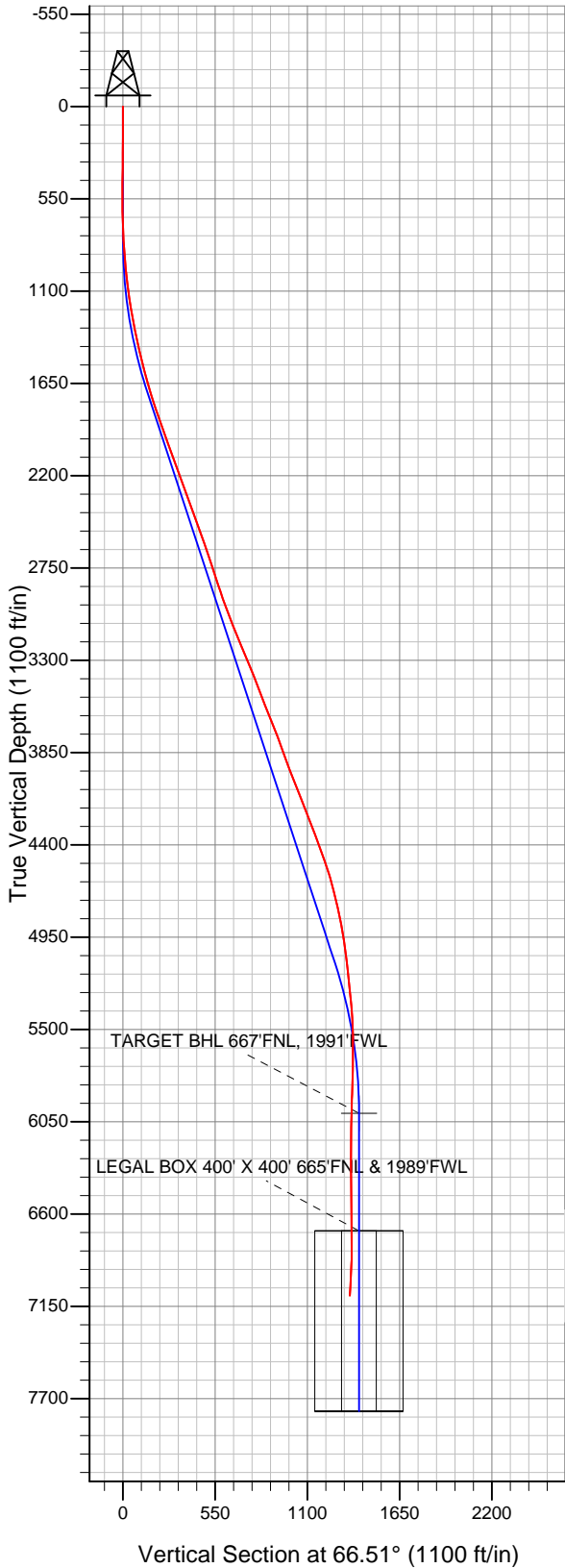


Well Name: River West 2

Surface Location: River West Pad Sec.24-T6N-R68W
 North American Datum 1983 US State Plane 1983 Colorado Northern Zone
 Ground Elevation: 4880.0
 +N/-S +E/-W Northing Easting Latitude Longitude Slot
 0.0 0.0 1416663.46 3150051.04 40.475890 -104.960630
 Original Well Elev WELL @ 4893.0ft (Original Well Elev)

Ranchers Exploration



LEGEND

- River West 2, Wellbore #1, Plan #1 (2-14-13) V0
- △ Wellbore #1
- Survey #1

Final Survey Plot

Projected Final Survey -
 7311'MD & 7086'TVD @ 1353'VS
 7.0 deg Inc 310.90 deg AZ

Project: SEC.24-T6N-R68W
 Site: River West Pad Sec.24-T6N-R68W
 Well: River West 2
 Plan: Wellbore #1



Ranchers Exploration

SEC.24-T6N-R68W

River West Pad Sec.24-T6N-R68W

River West 2

Wellbore #1

Survey: Survey #1

Standard Survey Report

10 March, 2014

Company:	Ranchers Exploration	Local Co-ordinate Reference:	Well River West 2
Project:	SEC.24-T6N-R68W	TVD Reference:	WELL @ 4893.0ft (Original Well Elev)
Site:	River West Pad Sec.24-T6N-R68W	MD Reference:	WELL @ 4893.0ft (Original Well Elev)
Well:	River West 2	North Reference:	True
Wellbore:	Wellbore #1	Survey Calculation Method:	Minimum Curvature
Design:	Wellbore #1	Database:	Landmark

Survey

Measured Depth (ft)	Inclination (°)	Azimuth (°)	Vertical Depth (ft)	+N/-S (ft)	+E/-W (ft)	Vertical Section (ft)	Dogleg Rate (°/100ft)	Build Rate (°/100ft)	Turn Rate (°/100ft)
1,397.0	12.00	68.20	1,390.8	40.8	73.2	83.3	1.18	1.17	0.55
1,525.0	13.80	66.40	1,515.5	51.8	99.5	111.9	1.44	1.41	-1.41
1,654.0	15.90	66.20	1,640.2	65.1	129.8	145.0	1.63	1.63	-0.16
1,782.0	18.10	66.40	1,762.6	80.1	164.0	182.4	1.72	1.72	0.16
1,911.0	20.20	68.30	1,884.5	96.4	203.1	224.7	1.70	1.63	1.47
2,039.0	18.90	64.60	2,005.1	113.5	242.4	267.5	1.40	-1.02	-2.89
2,167.0	19.90	63.60	2,125.8	132.0	280.6	310.0	0.82	0.78	-0.78
2,295.0	20.80	63.80	2,245.8	151.8	320.5	354.4	0.71	0.70	0.16
2,424.0	20.10	65.70	2,366.7	171.0	361.3	399.5	0.75	-0.54	1.47
2,552.0	20.00	66.80	2,487.0	188.7	401.4	443.4	0.30	-0.08	0.86
2,680.0	19.20	66.80	2,607.5	205.6	440.9	486.3	0.63	-0.63	0.00
2,808.0	18.50	69.70	2,728.7	220.9	479.3	527.6	0.91	-0.55	2.27
2,936.0	18.10	65.90	2,850.2	236.1	516.5	567.8	0.98	-0.31	-2.97
3,064.0	20.00	70.80	2,971.2	251.4	555.3	609.5	1.94	1.48	3.83
3,193.0	21.70	70.10	3,091.7	266.8	598.6	655.3	1.33	1.32	-0.54
3,321.0	22.50	66.90	3,210.3	284.5	643.4	703.4	1.13	0.63	-2.50
3,449.0	22.80	65.70	3,328.5	304.3	688.5	752.7	0.43	0.23	-0.94
3,577.0	20.90	65.50	3,447.3	323.9	731.9	800.3	1.49	-1.48	-0.16
3,706.0	21.70	58.50	3,567.5	346.0	773.1	847.0	2.07	0.62	-5.43
3,834.0	22.00	62.50	3,686.3	369.4	814.6	894.3	1.19	0.23	3.13
3,962.0	20.10	71.50	3,805.8	387.4	856.7	940.2	2.93	-1.48	7.03
4,091.0	19.70	68.50	3,927.1	402.4	898.0	984.0	0.85	-0.31	-2.33
4,219.0	22.60	65.20	4,046.4	420.7	940.4	1,030.1	2.45	2.27	-2.58
4,347.0	21.70	63.60	4,165.0	441.5	983.9	1,078.4	0.85	-0.70	-1.25
4,475.0	20.90	65.50	4,284.2	461.5	1,025.9	1,124.8	0.83	-0.63	1.48
4,604.0	19.30	64.80	4,405.4	480.1	1,066.1	1,169.1	1.25	-1.24	-0.54
4,732.0	19.60	68.90	4,526.1	496.9	1,105.3	1,211.7	1.09	0.23	3.20
4,860.0	14.70	70.30	4,648.4	510.1	1,140.6	1,249.4	3.84	-3.83	1.09
4,988.0	13.10	71.30	4,772.6	520.2	1,169.7	1,280.1	1.26	-1.25	0.78
5,116.0	9.80	64.30	4,898.1	529.6	1,193.2	1,305.4	2.79	-2.58	-5.47
5,245.0	7.80	70.30	5,025.5	537.3	1,211.4	1,325.1	1.70	-1.55	4.65
5,373.0	6.20	65.50	5,152.6	543.1	1,225.8	1,340.7	1.33	-1.25	-3.75
5,501.0	5.80	61.30	5,279.9	549.1	1,237.8	1,354.1	0.46	-0.31	-3.28
5,629.0	4.50	39.90	5,407.4	556.0	1,246.7	1,365.0	1.80	-1.02	-16.72
5,758.0	2.50	24.00	5,536.1	562.5	1,251.1	1,371.6	1.71	-1.55	-12.33
5,886.0	3.10	316.50	5,664.0	567.5	1,249.8	1,372.5	2.46	0.47	-52.73
6,013.0	4.10	298.40	5,790.7	572.2	1,243.5	1,368.5	1.18	0.79	-14.25
6,141.0	0.80	251.30	5,918.6	574.1	1,238.6	1,364.8	2.82	-2.58	-36.80
6,220.9	1.52	289.47	5,998.5	574.2	1,237.1	1,363.4	1.28	0.90	47.78
TARGET BHL 667'FNL, 1991'FWL									
6,312.0	2.60	302.00	6,089.5	575.7	1,234.2	1,361.4	1.28	1.18	13.75
6,483.0	1.70	336.90	6,260.4	580.1	1,229.9	1,359.2	0.91	-0.53	20.41
6,654.0	0.50	28.40	6,431.4	583.1	1,229.3	1,359.8	0.84	-0.70	30.12
6,825.0	1.40	24.70	6,602.4	585.7	1,230.5	1,362.0	0.53	0.53	-2.16
6,921.4	2.47	353.28	6,698.8	588.8	1,230.7	1,363.4	1.52	1.11	-32.58
LEGAL BOX 400' X 400' 665'FNL & 1989'FWL									
6,996.0	3.50	344.00	6,773.2	592.6	1,229.9	1,364.2	1.52	1.38	-12.45
7,124.0	6.50	314.10	6,900.7	601.4	1,223.6	1,361.9	3.03	2.34	-23.36
7,251.0	7.00	310.90	7,026.9	611.5	1,212.6	1,355.9	0.49	0.39	-2.52
7,311.0	7.00	310.90	7,086.4	616.2	1,207.1	1,352.7	0.00	0.00	0.00

Company:	Ranchers Exploration	Local Co-ordinate Reference:	Well River West 2
Project:	SEC.24-T6N-R68W	TVD Reference:	WELL @ 4893.0ft (Original Well Elev)
Site:	River West Pad Sec.24-T6N-R68W	MD Reference:	WELL @ 4893.0ft (Original Well Elev)
Well:	River West 2	North Reference:	True
Wellbore:	Wellbore #1	Survey Calculation Method:	Minimum Curvature
Design:	Wellbore #1	Database:	Landmark

Checked By: _____ Approved By: _____ Date: _____