

EXTRACTION OIL & GAS

WELD COUNTY, COLORADO (NAD 83)

SEC. 14 T2N R68W 6th P.M.

BYBEE 5

ORIGINAL WELLBORE

17 March, 2015

Plan: PROPOSAL #3

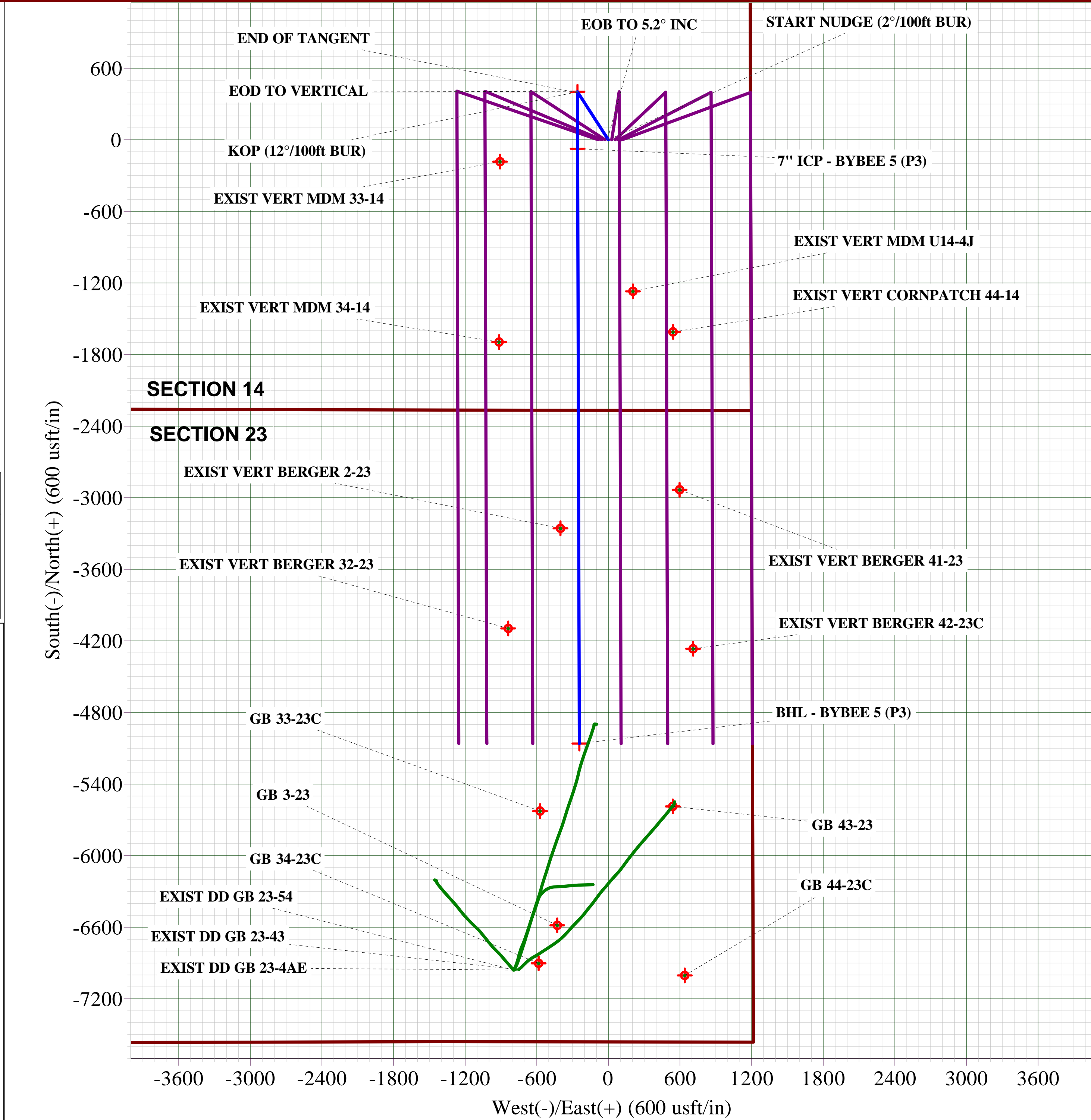
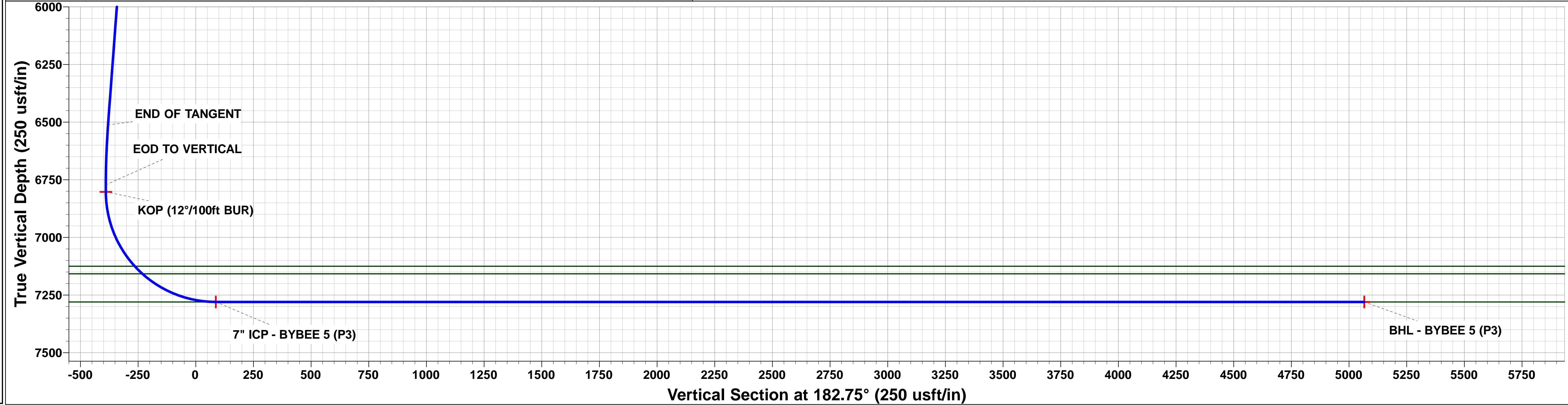
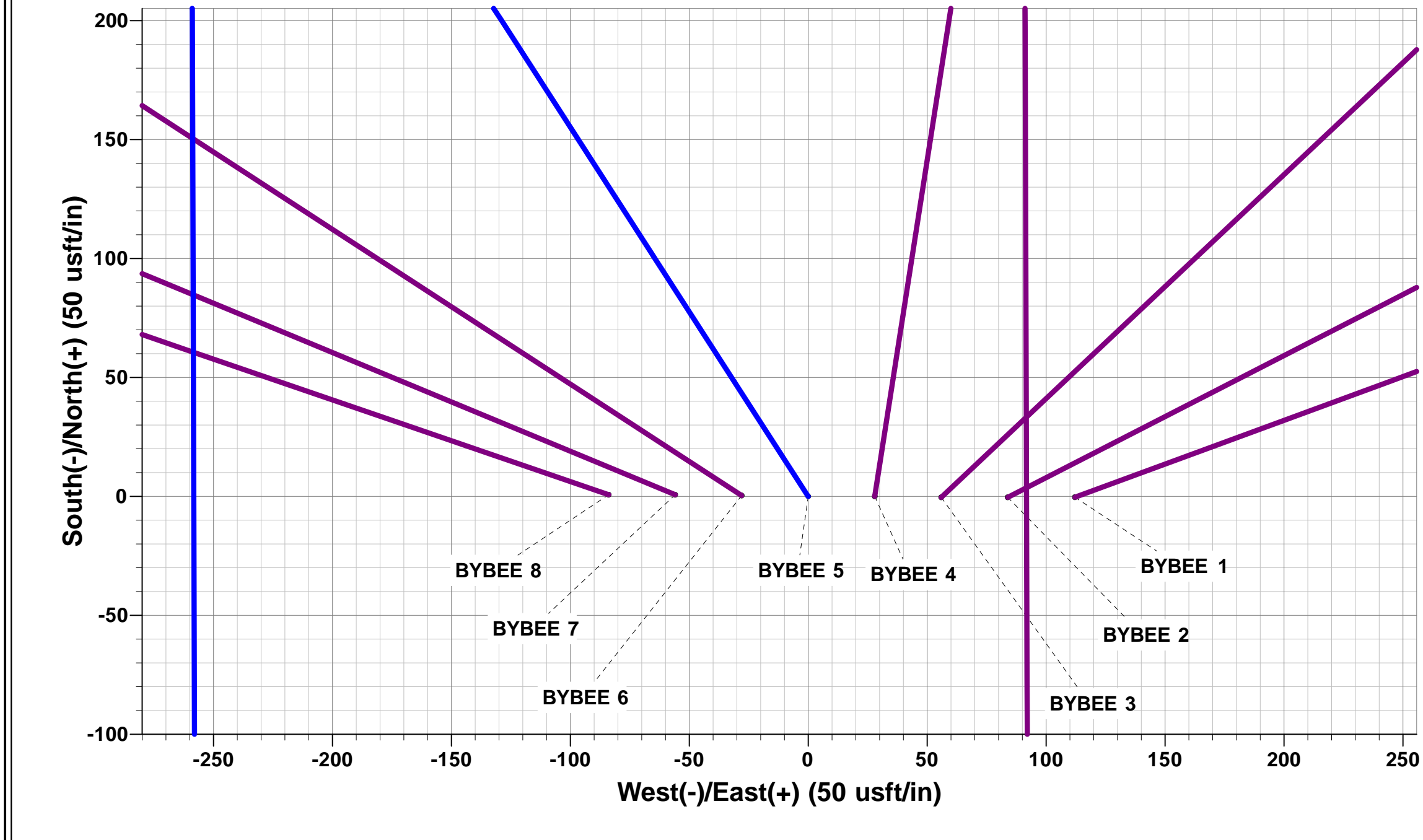
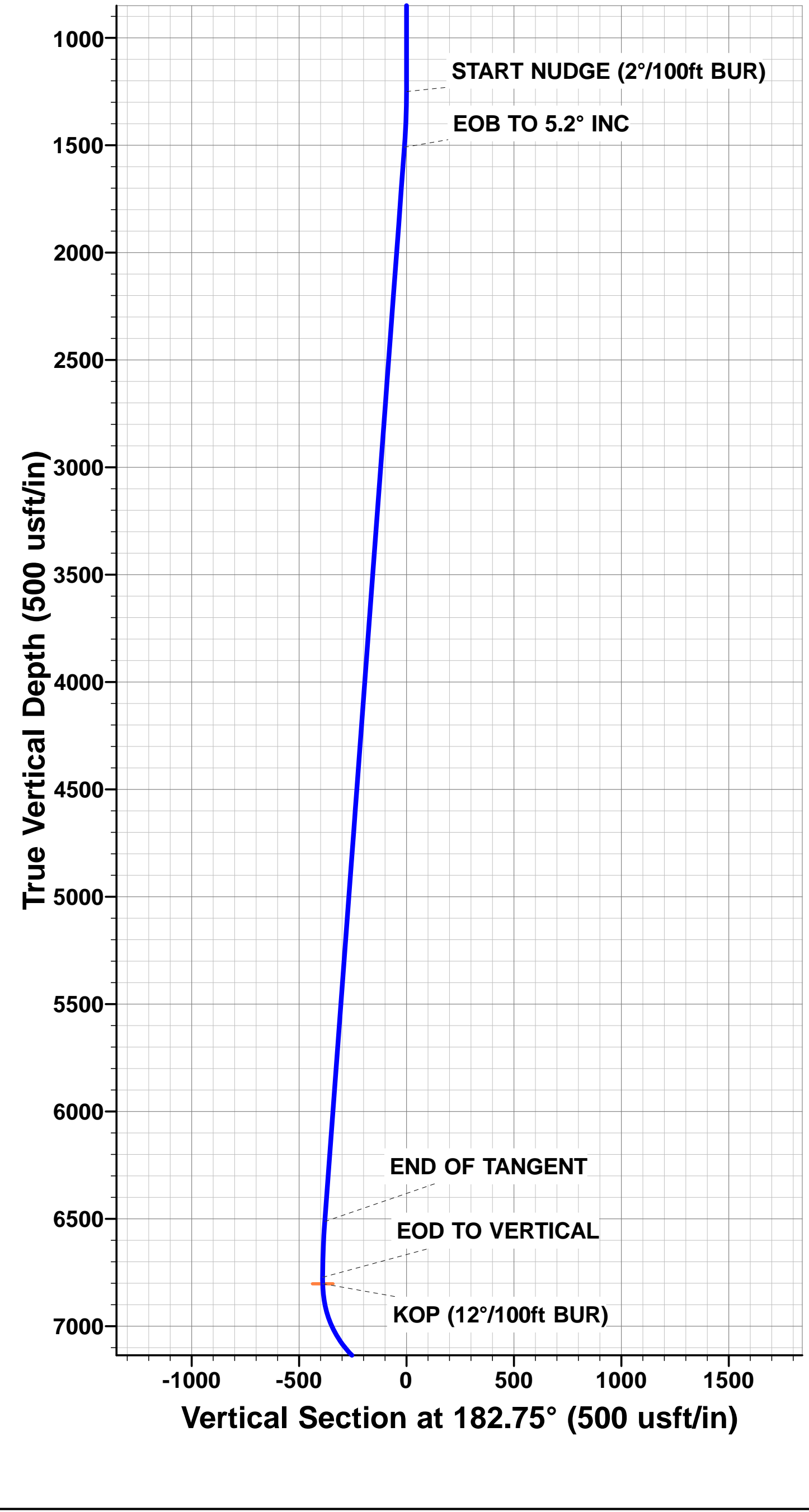




Project: WELD COUNTY, COLORADO (NAD 83)
Site: SEC. 14 T2N R68W 6th P.M.
Well: BYBEE 5
Wellbore: ORIGINAL WELLBORE
Design: PROPOSAL #3

ANNOTATIONS									FORMATION TOP DETAILS		
TVD	MD	Inc	Azi	+N/-S	+E/-W	VSect	Dep	Annotation	TVDPATH	MDPATH	Formation
1250.0	1250.0	0.00	0.00	0.0	0.0	0.0	0.0	START NUDGE (2°/100ft BUR)	3567.0	3575.9	PARKMAN
1509.7	1510.1	5.20	327.21	9.9	-6.4	-9.6	11.8	EOB TO 5.2° INC	4385.0	4397.3	SUSSEX
6512.7	6533.8	5.20	327.21	392.9	-253.1	-380.3	467.4	END OF TANGENT	4941.0	4955.6	SHANNON
6772.5	6793.9	0.00	327.21	402.8	-259.5	-389.9	479.2	EOD TO VERTICAL	7125.0	7178.0	SHARON SPRINGS
6802.5	6823.9	0.00	0.00	402.8	-259.5	-389.9	479.2	KOP (12°/100ft BUR)	7158.0	7224.9	NIOBRARA
7280.0	7573.9	89.99	179.83	-74.6	-258.1	86.9	956.6	7" ICP - BYBEE 5 (P3)	7280.0	7573.9	NIO B TARGET
7280.0	12559.7	90.00	179.83	-5060.4	-243.3	5066.2	5942.4	BHL - BYBEE 5 (P3)			

WELLBORE TARGET DETAILS (LAT/LONG)					
Name	TVD	+N/-S	+E/-W	Latitude	Longitude
KOP - BYBEE 5 (P3)	6802.5	402.8	-259.5	40.138768	-104.966201
7" ICP - BYBEE 5 (P3)	7280.0	-74.7	-258.1	40.137457	-104.966196
BHL - BYBEE 5 (P3)	7280.0	-5060.4	-243.3	40.123771	-104.966143



Planning Report



Database:	EDM 5000.1 Single User Db	Local Co-ordinate Reference:	Well BYBEE 5
Company:	EXTRACTION OIL & GAS	TVD Reference:	KB-EST @ 4913.0usft (Original Well Elev)
Project:	WELD COUNTY, COLORADO (NAD 83)	MD Reference:	KB-EST @ 4913.0usft (Original Well Elev)
Site:	SEC. 14 T2N R68W 6th P.M.	North Reference:	True
Well:	BYBEE 5	Survey Calculation Method:	Minimum Curvature
Wellbore:	ORIGINAL WELLBORE		
Design:	PROPOSAL #3		

Project	WELD COUNTY, COLORADO (NAD 83)		
Map System:	US State Plane 1983	System Datum:	Mean Sea Level
Geo Datum:	North American Datum 1983		
Map Zone:	Colorado Northern Zone		Using geodetic scale factor

Site	SEC. 14 T2N R68W 6th P.M.		
Site Position:		Northing:	1,293,444.96 usft
From:	Lat/Long	Easting:	3,149,614.50 usft
Position Uncertainty:	0.0 usft	Slot Radius:	1.10000ft
		Latitude:	40.137661
		Longitude:	-104.964872
		Grid Convergence:	0.35 °

Well	BYBEE 5		
Well Position	+N/-S	0.3 usft	Northing:
	+E/-W	-112.1 usft	Easting:
Position Uncertainty		0.0 usft	Wellhead Elevation:
			Latitude:
			Longitude:
			Ground Level:

Wellbore	ORIGINAL WELLBORE				
Magnetics	Model Name	Sample Date	Declination (°)	Dip Angle (°)	Field Strength (nT)
	IGRF2010	15/10/2014	8.50	66.69	52,621

Design	PROPOSAL #3			
Audit Notes:				
Version:	Phase:	PROTOTYPE	Tie On Depth:	0.0
Vertical Section:	Depth From (TVD) (usft)	+N/-S (usft)	+E/-W (usft)	Direction (°)
	7,280.0	0.0	0.0	182.75

Plan Sections											
MD (usft)	Inc (°)	Azi (°)	Vertical Depth	SS (usft)	+N/-S (usft)	+E/-W (usft)	Dogleg Rate (°/100usf)	Build Rate (°/100usf)	Turn Rate (°/100usf)	TFO (°)	Target
0.0	0.00	0.00	0.0	-4,913.0	0.0	0.0	0.00	0.00	0.00	0.00	
1,250.0	0.00	0.00	1,250.0	-3,663.0	0.0	0.0	0.00	0.00	0.00	0.00	
1,510.1	5.20	327.21	1,509.8	-3,403.2	9.9	-6.4	2.00	2.00	0.00	327.21	
6,533.8	5.20	327.21	6,512.7	1,599.7	392.9	-253.1	0.00	0.00	0.00	0.00	
6,793.9	0.00	0.00	6,772.5	1,859.5	402.8	-259.5	2.00	-2.00	0.00	180.00	
6,823.9	0.00	0.00	6,802.5	1,889.5	402.8	-259.5	0.00	0.00	0.00	0.00	KOP - BYBEE 5 (P
7,573.9	90.00	179.83	7,280.0	2,367.0	-74.7	-258.1	12.00	12.00	23.98	179.83	7" ICP - BYBEE 5 (
12,559.7	90.00	179.83	7,280.0	2,367.0	-5,060.4	-243.3	0.00	0.00	0.00	19.91	BHL - BYBEE 5 (P

Planning Report



Database:	EDM 5000.1 Single User Db	Local Co-ordinate Reference:	Well BYBEE 5
Company:	EXTRACTION OIL & GAS	TVD Reference:	KB-EST @ 4913.0usft (Original Well Elev)
Project:	WELD COUNTY, COLORADO (NAD 83)	MD Reference:	KB-EST @ 4913.0usft (Original Well Elev)
Site:	SEC. 14 T2N R68W 6th P.M.	North Reference:	True
Well:	BYBEE 5	Survey Calculation Method:	Minimum Curvature
Wellbore:	ORIGINAL WELLBORE		
Design:	PROPOSAL #3		

Planned Survey

MD (usft)	Inc (°)	Azi (°)	TVD (usft)	SS (usft)	+N/-S (usft)	+E/-W (usft)	Vertical Section (usft)	Dogleg Rate (°/100usft)	Build Rate (°/100usft)	Turn Rate (°/100usft)
0.0	0.00	0.00	0.0	4,913.00	0.0	0.0	0.0	0.00	0.00	0.00
100.0	0.00	0.00	100.0	4,813.00	0.0	0.0	0.0	0.00	0.00	0.00
200.0	0.00	0.00	200.0	4,713.00	0.0	0.0	0.0	0.00	0.00	0.00
300.0	0.00	0.00	300.0	4,613.00	0.0	0.0	0.0	0.00	0.00	0.00
400.0	0.00	0.00	400.0	4,513.00	0.0	0.0	0.0	0.00	0.00	0.00
500.0	0.00	0.00	500.0	4,413.00	0.0	0.0	0.0	0.00	0.00	0.00
600.0	0.00	0.00	600.0	4,313.00	0.0	0.0	0.0	0.00	0.00	0.00
700.0	0.00	0.00	700.0	4,213.00	0.0	0.0	0.0	0.00	0.00	0.00
800.0	0.00	0.00	800.0	4,113.00	0.0	0.0	0.0	0.00	0.00	0.00
900.0	0.00	0.00	900.0	4,013.00	0.0	0.0	0.0	0.00	0.00	0.00
1,000.0	0.00	0.00	1,000.0	3,913.00	0.0	0.0	0.0	0.00	0.00	0.00
1,100.0	0.00	0.00	1,100.0	3,813.00	0.0	0.0	0.0	0.00	0.00	0.00
1,200.0	0.00	0.00	1,200.0	3,713.00	0.0	0.0	0.0	0.00	0.00	0.00
START NUDGE (2°/100ft BUR)										
1,250.0	0.00	0.00	1,250.0	3,663.00	0.0	0.0	0.0	0.00	0.00	0.00
1,300.0	1.00	327.21	1,300.0	3,613.00	0.4	-0.2	-0.4	2.00	2.00	0.00
1,400.0	3.00	327.21	1,399.9	3,513.07	3.3	-2.1	-3.2	2.00	2.00	0.00
1,500.0	5.00	327.21	1,499.7	3,413.32	9.2	-5.9	-8.9	2.00	2.00	0.00
EOB TO 5.2° INC										
1,510.1	5.20	327.21	1,509.7	3,403.26	9.9	-6.4	-9.6	2.00	2.00	0.00
1,600.0	5.20	327.21	1,599.3	3,313.73	16.8	-10.8	-16.2	0.00	0.00	0.00
1,700.0	5.20	327.21	1,698.9	3,214.14	24.4	-15.7	-23.6	0.00	0.00	0.00
1,800.0	5.20	327.21	1,798.4	3,114.55	32.0	-20.6	-31.0	0.00	0.00	0.00
1,900.0	5.20	327.21	1,898.0	3,014.96	39.6	-25.5	-38.4	0.00	0.00	0.00
2,000.0	5.20	327.21	1,997.6	2,915.38	47.3	-30.4	-45.7	0.00	0.00	0.00
2,100.0	5.20	327.21	2,097.2	2,815.79	54.9	-35.4	-53.1	0.00	0.00	0.00
2,200.0	5.20	327.21	2,196.8	2,716.20	62.5	-40.3	-60.5	0.00	0.00	0.00
2,300.0	5.20	327.21	2,296.4	2,616.61	70.1	-45.2	-67.9	0.00	0.00	0.00
2,400.0	5.20	327.21	2,396.0	2,517.02	77.8	-50.1	-75.3	0.00	0.00	0.00
2,500.0	5.20	327.21	2,495.6	2,417.44	85.4	-55.0	-82.6	0.00	0.00	0.00
2,600.0	5.20	327.21	2,595.2	2,317.85	93.0	-59.9	-90.0	0.00	0.00	0.00
2,700.0	5.20	327.21	2,694.7	2,218.26	100.6	-64.8	-97.4	0.00	0.00	0.00
2,800.0	5.20	327.21	2,794.3	2,118.67	108.2	-69.7	-104.8	0.00	0.00	0.00
2,900.0	5.20	327.21	2,893.9	2,019.08	115.9	-74.6	-112.2	0.00	0.00	0.00
3,000.0	5.20	327.21	2,993.5	1,919.50	123.5	-79.6	-119.5	0.00	0.00	0.00
3,100.0	5.20	327.21	3,093.1	1,819.91	131.1	-84.5	-126.9	0.00	0.00	0.00
3,200.0	5.20	327.21	3,192.7	1,720.32	138.7	-89.4	-134.3	0.00	0.00	0.00
3,300.0	5.20	327.21	3,292.3	1,620.73	146.4	-94.3	-141.7	0.00	0.00	0.00
3,400.0	5.20	327.21	3,391.9	1,521.14	154.0	-99.2	-149.0	0.00	0.00	0.00
3,500.0	5.20	327.21	3,491.4	1,421.56	161.6	-104.1	-156.4	0.00	0.00	0.00
PARKMAN										
3,575.9	5.20	327.21	3,567.0	1,346.00	167.4	-107.8	-162.0	0.00	0.00	0.00
3,600.0	5.20	327.21	3,591.0	1,321.97	169.2	-109.0	-163.8	0.00	0.00	0.00
3,700.0	5.20	327.21	3,690.6	1,222.38	176.9	-113.9	-171.2	0.00	0.00	0.00
3,800.0	5.20	327.21	3,790.2	1,122.79	184.5	-118.8	-178.6	0.00	0.00	0.00
3,900.0	5.20	327.21	3,889.8	1,023.20	192.1	-123.8	-185.9	0.00	0.00	0.00
4,000.0	5.20	327.21	3,989.4	923.62	199.7	-128.7	-193.3	0.00	0.00	0.00
4,100.0	5.20	327.21	4,089.0	824.03	207.3	-133.6	-200.7	0.00	0.00	0.00
4,200.0	5.20	327.21	4,188.6	724.44	215.0	-138.5	-208.1	0.00	0.00	0.00
4,300.0	5.20	327.21	4,288.1	624.85	222.6	-143.4	-215.5	0.00	0.00	0.00
SUSSEX										
4,397.3	5.20	327.21	4,385.0	528.00	230.0	-148.2	-222.6	0.00	0.00	0.00
4,400.0	5.20	327.21	4,387.7	525.26	230.2	-148.3	-222.8	0.00	0.00	0.00
4,500.0	5.20	327.21	4,487.3	425.68	237.8	-153.2	-230.2	0.00	0.00	0.00

Database:	EDM 5000.1 Single User Db	Local Co-ordinate Reference:	Well BYBEE 5
Company:	EXTRACTION OIL & GAS	TVD Reference:	KB-EST @ 4913.0usft (Original Well Elev)
Project:	WELD COUNTY, COLORADO (NAD 83)	MD Reference:	KB-EST @ 4913.0usft (Original Well Elev)
Site:	SEC. 14 T2N R68W 6th P.M.	North Reference:	True
Well:	BYBEE 5	Survey Calculation Method:	Minimum Curvature
Wellbore:	ORIGINAL WELLBORE		
Design:	PROPOSAL #3		

Planned Survey

MD (usft)	Inc (°)	Azi (°)	TVD (usft)	SS (usft)	+N/-S (usft)	+E/-W (usft)	Vertical Section (usft)	Dogleg Rate (°/100usft)	Build Rate (°/100usft)	Turn Rate (°/100usft)
4,600.0	5.20	327.21	4,586.9	326.09	245.5	-158.1	-237.6	0.00	0.00	0.00
4,700.0	5.20	327.21	4,686.5	226.50	253.1	-163.0	-245.0	0.00	0.00	0.00
4,800.0	5.20	327.21	4,786.1	126.91	260.7	-168.0	-252.3	0.00	0.00	0.00
4,900.0	5.20	327.21	4,885.7	27.32	268.3	-172.9	-259.7	0.00	0.00	0.00
SHANNON										
4,955.6	5.20	327.21	4,941.0	-28.00	272.6	-175.6	-263.8	0.00	0.00	0.00
5,000.0	5.20	327.21	4,985.3	-72.26	276.0	-177.8	-267.1	0.00	0.00	0.00
5,100.0	5.20	327.21	5,084.9	-171.85	283.6	-182.7	-274.5	0.00	0.00	0.00
5,200.0	5.20	327.21	5,184.4	-271.44	291.2	-187.6	-281.9	0.00	0.00	0.00
5,300.0	5.20	327.21	5,284.0	-371.03	298.8	-192.5	-289.2	0.00	0.00	0.00
5,400.0	5.20	327.21	5,383.6	-470.62	306.4	-197.4	-296.6	0.00	0.00	0.00
5,500.0	5.20	327.21	5,483.2	-570.20	314.1	-202.3	-304.0	0.00	0.00	0.00
5,600.0	5.20	327.21	5,582.8	-669.79	321.7	-207.2	-311.4	0.00	0.00	0.00
5,700.0	5.20	327.21	5,682.4	-769.38	329.3	-212.2	-318.7	0.00	0.00	0.00
5,800.0	5.20	327.21	5,782.0	-868.97	336.9	-217.1	-326.1	0.00	0.00	0.00
5,900.0	5.20	327.21	5,881.6	-968.56	344.6	-222.0	-333.5	0.00	0.00	0.00
6,000.0	5.20	327.21	5,981.1	-1,068.14	352.2	-226.9	-340.9	0.00	0.00	0.00
6,100.0	5.20	327.21	6,080.7	-1,167.73	359.8	-231.8	-348.3	0.00	0.00	0.00
6,200.0	5.20	327.21	6,180.3	-1,267.32	367.4	-236.7	-355.6	0.00	0.00	0.00
6,300.0	5.20	327.21	6,279.9	-1,366.91	375.1	-241.6	-363.0	0.00	0.00	0.00
6,400.0	5.20	327.21	6,379.5	-1,466.50	382.7	-246.5	-370.4	0.00	0.00	0.00
6,500.0	5.20	327.21	6,479.1	-1,566.08	390.3	-251.4	-377.8	0.00	0.00	0.00
END OF TANGENT										
6,533.8	5.20	327.21	6,512.7	-1,599.75	392.9	-253.1	-380.3	0.00	0.00	0.00
6,600.0	3.88	327.21	6,578.7	-1,665.74	397.3	-255.9	-384.5	2.00	-2.00	0.00
6,700.0	1.88	327.21	6,678.6	-1,765.60	401.5	-258.7	-388.6	2.00	-2.00	0.00
EOD TO VERTICAL										
6,793.9	0.00	327.21	6,772.5	-1,859.49	402.8	-259.5	-389.9	2.00	-2.00	0.00
6,800.0	0.00	0.00	6,778.6	-1,865.59	402.8	-259.5	-389.9	0.00	0.00	0.00
KOP (12°/100ft BUR)										
6,823.9	0.00	0.00	6,802.5	-1,889.49	402.8	-259.5	-389.9	0.00	0.00	0.00
6,900.0	9.13	179.83	6,878.3	-1,965.27	396.8	-259.5	-383.8	12.00	12.00	0.00
7,000.0	21.13	179.83	6,974.6	-2,061.62	370.7	-259.4	-357.8	12.00	12.00	0.00
7,100.0	33.13	179.83	7,063.5	-2,150.46	325.2	-259.3	-312.4	12.00	12.00	0.00
SHARON SPRINGS										
7,178.0	42.48	179.83	7,125.0	-2,212.00	277.4	-259.1	-264.7	12.00	12.00	0.00
7,200.0	45.13	179.83	7,140.9	-2,227.89	262.2	-259.1	-249.4	12.00	12.00	0.00
NIOBRARA										
7,224.9	48.12	179.83	7,158.0	-2,245.00	244.1	-259.0	-231.4	12.00	12.00	0.00
7,300.0	57.13	179.83	7,203.5	-2,290.54	184.5	-258.8	-171.8	12.00	12.00	0.00
7,400.0	69.13	179.83	7,248.7	-2,335.66	95.4	-258.6	-82.9	12.00	12.00	0.00
7,500.0	81.12	179.83	7,274.3	-2,361.28	-1.0	-258.3	13.4	12.00	12.00	0.00
7" ICP - BYBEE 5 (P3) - NIO B TARGET										
7,573.9	90.00	179.83	7,280.0	-2,367.00	-74.7	-258.1	87.0	12.00	12.00	0.00
7,600.0	90.00	179.83	7,280.0	-2,367.00	-100.7	-258.0	113.0	0.00	0.00	0.00
7,700.0	90.00	179.83	7,280.0	-2,367.01	-200.7	-257.7	212.9	0.00	0.00	0.00
7,800.0	90.00	179.83	7,280.0	-2,367.02	-300.7	-257.4	312.7	0.00	0.00	0.00
7,900.0	90.00	179.83	7,280.0	-2,367.03	-400.7	-257.1	412.6	0.00	0.00	0.00
8,000.0	90.00	179.83	7,280.0	-2,367.03	-500.7	-256.8	512.5	0.00	0.00	0.00
8,100.0	90.00	179.83	7,280.0	-2,367.04	-600.7	-256.5	612.4	0.00	0.00	0.00
8,200.0	90.00	179.83	7,280.0	-2,367.05	-700.7	-256.2	712.2	0.00	0.00	0.00
8,300.0	90.00	179.83	7,280.1	-2,367.05	-800.7	-255.9	812.1	0.00	0.00	0.00
8,400.0	90.00	179.83	7,280.1	-2,367.06	-900.7	-255.6	912.0	0.00	0.00	0.00

Planning Report



Database:	EDM 5000.1 Single User Db	Local Co-ordinate Reference:	Well BYBEE 5
Company:	EXTRACTION OIL & GAS	TVD Reference:	KB-EST @ 4913.0usft (Original Well Elev)
Project:	WELD COUNTY, COLORADO (NAD 83)	MD Reference:	KB-EST @ 4913.0usft (Original Well Elev)
Site:	SEC. 14 T2N R68W 6th P.M.	North Reference:	True
Well:	BYBEE 5	Survey Calculation Method:	Minimum Curvature
Wellbore:	ORIGINAL WELLBORE		
Design:	PROPOSAL #3		

Planned Survey										
MD (usft)	Inc (°)	Azi (°)	TVD (usft)	SS (usft)	+N/-S (usft)	+E/-W (usft)	Vertical Section (usft)	Dogleg Rate (°/100usft)	Build Rate (°/100usft)	Turn Rate (°/100usft)
8,500.0	90.00	179.83	7,280.1	-2,367.06	-1,000.7	-255.3	1,011.8	0.00	0.00	0.00
8,600.0	90.00	179.83	7,280.1	-2,367.07	-1,100.7	-255.0	1,111.7	0.00	0.00	0.00
8,700.0	90.00	179.83	7,280.1	-2,367.07	-1,200.7	-254.7	1,211.6	0.00	0.00	0.00
8,800.0	90.00	179.83	7,280.1	-2,367.08	-1,300.7	-254.4	1,311.4	0.00	0.00	0.00
8,900.0	90.00	179.83	7,280.1	-2,367.08	-1,400.7	-254.1	1,411.3	0.00	0.00	0.00
9,000.0	90.00	179.83	7,280.1	-2,367.08	-1,500.7	-253.8	1,511.2	0.00	0.00	0.00
9,100.0	90.00	179.83	7,280.1	-2,367.09	-1,600.7	-253.5	1,611.1	0.00	0.00	0.00
9,200.0	90.00	179.83	7,280.1	-2,367.09	-1,700.7	-253.2	1,710.9	0.00	0.00	0.00
9,300.0	90.00	179.83	7,280.1	-2,367.09	-1,800.7	-252.9	1,810.8	0.00	0.00	0.00
9,400.0	90.00	179.83	7,280.1	-2,367.10	-1,900.7	-252.6	1,910.7	0.00	0.00	0.00
9,500.0	90.00	179.83	7,280.1	-2,367.10	-2,000.7	-252.3	2,010.5	0.00	0.00	0.00
9,600.0	90.00	179.83	7,280.1	-2,367.10	-2,100.7	-252.0	2,110.4	0.00	0.00	0.00
9,700.0	90.00	179.83	7,280.1	-2,367.10	-2,200.7	-251.7	2,210.3	0.00	0.00	0.00
9,800.0	90.00	179.83	7,280.1	-2,367.10	-2,300.7	-251.4	2,310.1	0.00	0.00	0.00
9,900.0	90.00	179.83	7,280.1	-2,367.10	-2,400.7	-251.1	2,410.0	0.00	0.00	0.00
10,000.0	90.00	179.83	7,280.1	-2,367.10	-2,500.7	-250.8	2,509.9	0.00	0.00	0.00
10,100.0	90.00	179.83	7,280.1	-2,367.10	-2,600.7	-250.6	2,609.8	0.00	0.00	0.00
10,200.0	90.00	179.83	7,280.1	-2,367.10	-2,700.7	-250.3	2,709.6	0.00	0.00	0.00
10,300.0	90.00	179.83	7,280.1	-2,367.10	-2,800.7	-250.0	2,809.5	0.00	0.00	0.00
10,400.0	90.00	179.83	7,280.1	-2,367.10	-2,900.7	-249.7	2,909.4	0.00	0.00	0.00
10,500.0	90.00	179.83	7,280.1	-2,367.10	-3,000.7	-249.4	3,009.2	0.00	0.00	0.00
10,600.0	90.00	179.83	7,280.1	-2,367.10	-3,100.7	-249.1	3,109.1	0.00	0.00	0.00
10,700.0	90.00	179.83	7,280.1	-2,367.10	-3,200.7	-248.8	3,209.0	0.00	0.00	0.00
10,800.0	90.00	179.83	7,280.1	-2,367.09	-3,300.7	-248.5	3,308.8	0.00	0.00	0.00
10,900.0	90.00	179.83	7,280.1	-2,367.09	-3,400.7	-248.2	3,408.7	0.00	0.00	0.00
11,000.0	90.00	179.83	7,280.1	-2,367.09	-3,500.7	-247.9	3,508.6	0.00	0.00	0.00
11,100.0	90.00	179.83	7,280.1	-2,367.09	-3,600.7	-247.6	3,608.5	0.00	0.00	0.00
11,200.0	90.00	179.83	7,280.1	-2,367.08	-3,700.7	-247.3	3,708.3	0.00	0.00	0.00
11,300.0	90.00	179.83	7,280.1	-2,367.08	-3,800.7	-247.0	3,808.2	0.00	0.00	0.00
11,400.0	90.00	179.83	7,280.1	-2,367.07	-3,900.7	-246.7	3,908.1	0.00	0.00	0.00
11,500.0	90.00	179.83	7,280.1	-2,367.07	-4,000.7	-246.4	4,007.9	0.00	0.00	0.00
11,600.0	90.00	179.83	7,280.1	-2,367.06	-4,100.7	-246.1	4,107.8	0.00	0.00	0.00
11,700.0	90.00	179.83	7,280.1	-2,367.06	-4,200.7	-245.8	4,207.7	0.00	0.00	0.00
11,800.0	90.00	179.83	7,280.1	-2,367.05	-4,300.7	-245.5	4,307.5	0.00	0.00	0.00
11,900.0	90.00	179.83	7,280.0	-2,367.05	-4,400.7	-245.2	4,407.4	0.00	0.00	0.00
12,000.0	90.00	179.83	7,280.0	-2,367.04	-4,500.7	-244.9	4,507.3	0.00	0.00	0.00
12,100.0	90.00	179.83	7,280.0	-2,367.03	-4,600.7	-244.7	4,607.2	0.00	0.00	0.00
12,200.0	90.00	179.83	7,280.0	-2,367.03	-4,700.7	-244.4	4,707.0	0.00	0.00	0.00
12,300.0	90.00	179.83	7,280.0	-2,367.02	-4,800.7	-244.1	4,806.9	0.00	0.00	0.00
12,400.0	90.00	179.83	7,280.0	-2,367.01	-4,900.7	-243.8	4,906.8	0.00	0.00	0.00
12,500.0	90.00	179.83	7,280.0	-2,367.00	-5,000.7	-243.5	5,006.6	0.00	0.00	0.00
BHL - BYBEE 5 (P3)										
12,559.7	90.00	179.83	7,280.0	-2,367.00	-5,060.4	-243.3	5,066.2	0.00	0.00	0.00

Database:	EDM 5000.1 Single User Db	Local Co-ordinate Reference:	Well BYBEE 5
Company:	EXTRACTION OIL & GAS	TVD Reference:	KB-EST @ 4913.0usft (Original Well Elev)
Project:	WELD COUNTY, COLORADO (NAD 83)	MD Reference:	KB-EST @ 4913.0usft (Original Well Elev)
Site:	SEC. 14 T2N R68W 6th P.M.	North Reference:	True
Well:	BYBEE 5	Survey Calculation Method:	Minimum Curvature
Wellbore:	ORIGINAL WELLBORE		
Design:	PROPOSAL #3		

Formations					
MD (usft)	TVD (usft)	Name	Lithology	Dip (°)	Dip Direction (°)
3,575.9	3,567.0	PARKMAN		0.00	
4,397.3	4,385.0	SUSSEX		0.00	
4,955.6	4,941.0	SHANNON		0.00	
7,178.0	7,125.0	SHARON SPRINGS		0.00	
7,224.9	7,158.0	NIOBRARA		0.00	
7,573.9	7,280.0	NIO B TARGET		0.00	

Plan Annotations				
MD (usft)	TVD (usft)	Local Coordinates		Comment
		+N/-S (usft)	+E/-W (usft)	
1,250.0	1,250.0	0.0	0.0	START NUDGE (2°/100ft BUR)
1,510.1	1,509.7	9.9	-6.4	EOB TO 5.2° INC
6,533.8	6,512.7	392.9	-253.1	END OF TANGENT
6,793.9	6,772.5	402.8	-259.5	EOD TO VERTICAL
6,823.9	6,802.5	402.8	-259.5	KOP (12°/100ft BUR)
7,573.9	7,280.0	-74.6	-258.1	7" ICP - BYBEE 5 (P3)
12,559.7	7,280.0	-5,060.4	-243.3	BHL - BYBEE 5 (P3)