

EXTRACTION OIL & GAS

WELD COUNTY, COLORADO (NAD 83)

SEC. 14 T2N R68W 6th P.M.

BYBEE 3

ORIGINAL WELLBORE

17 March, 2015

Plan: PROPOSAL #3

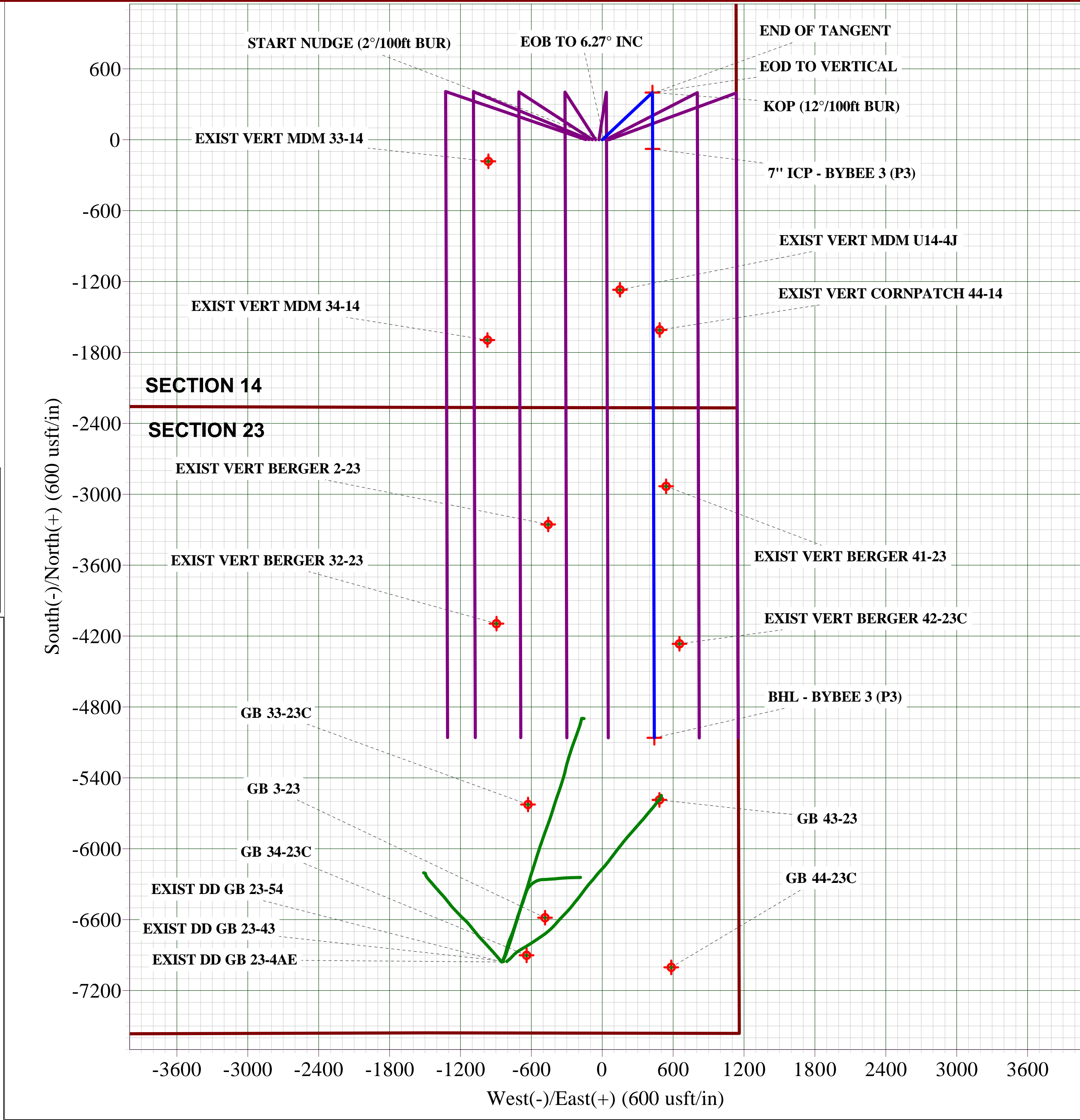
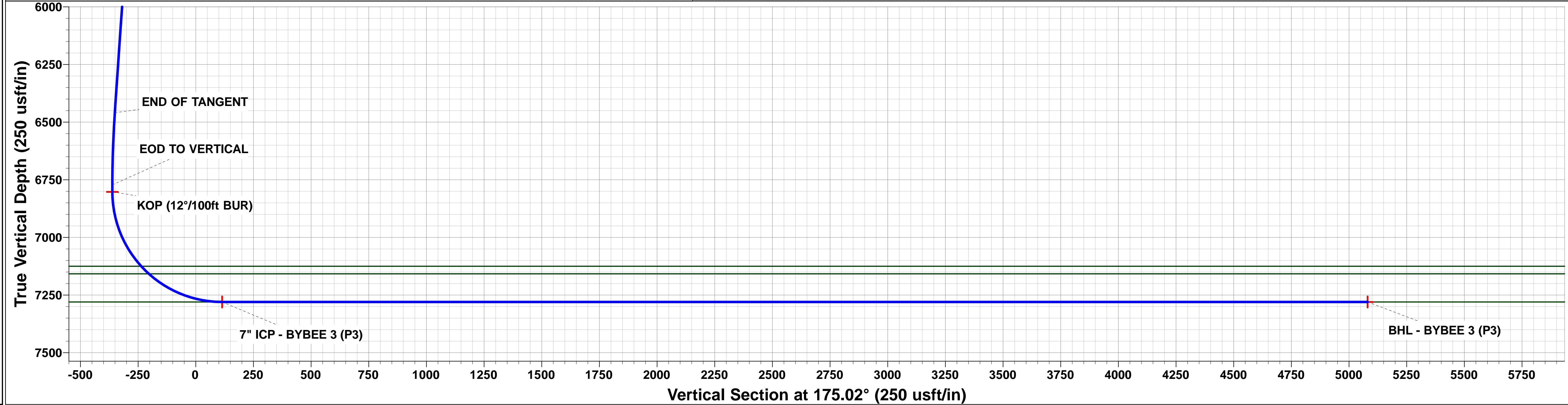
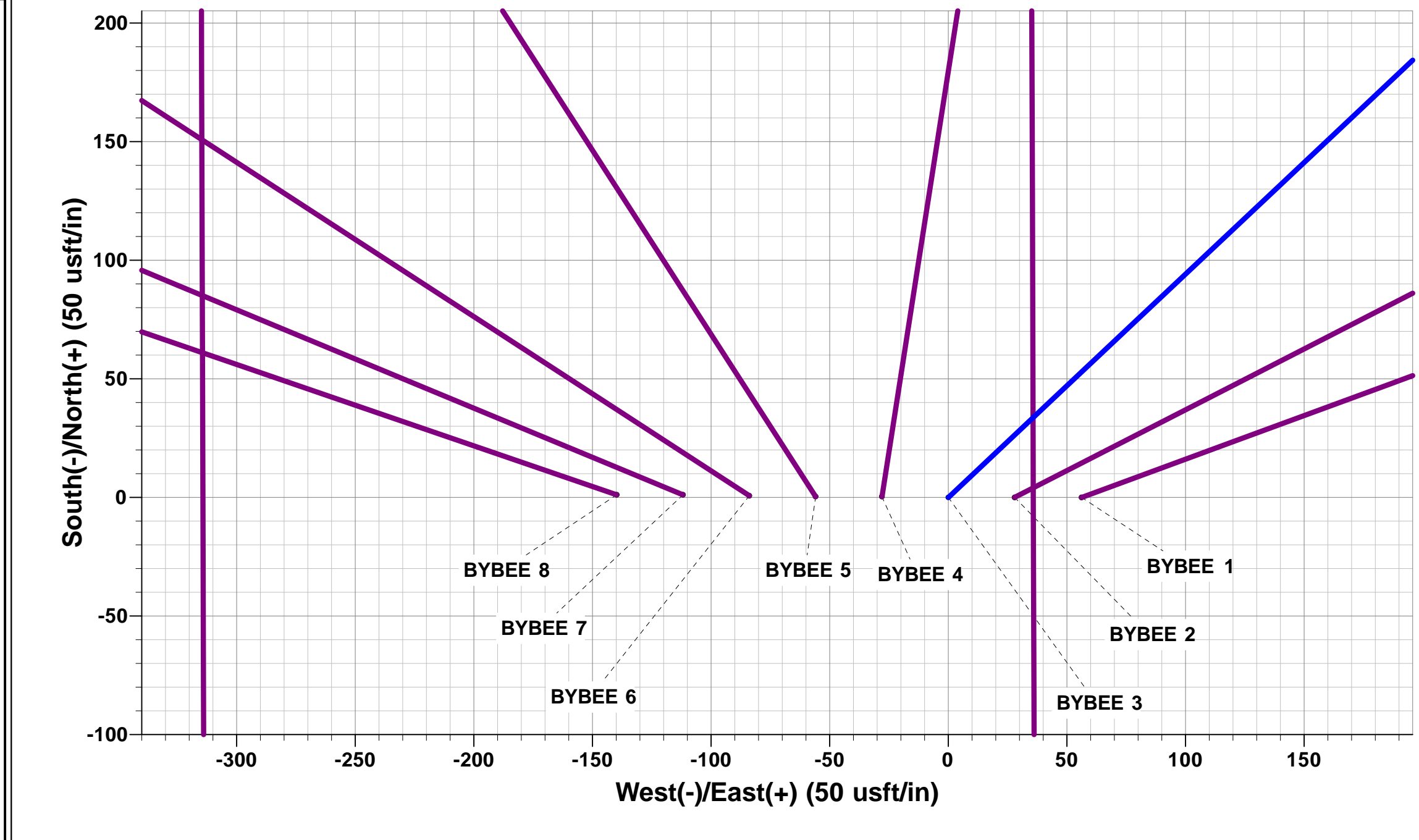
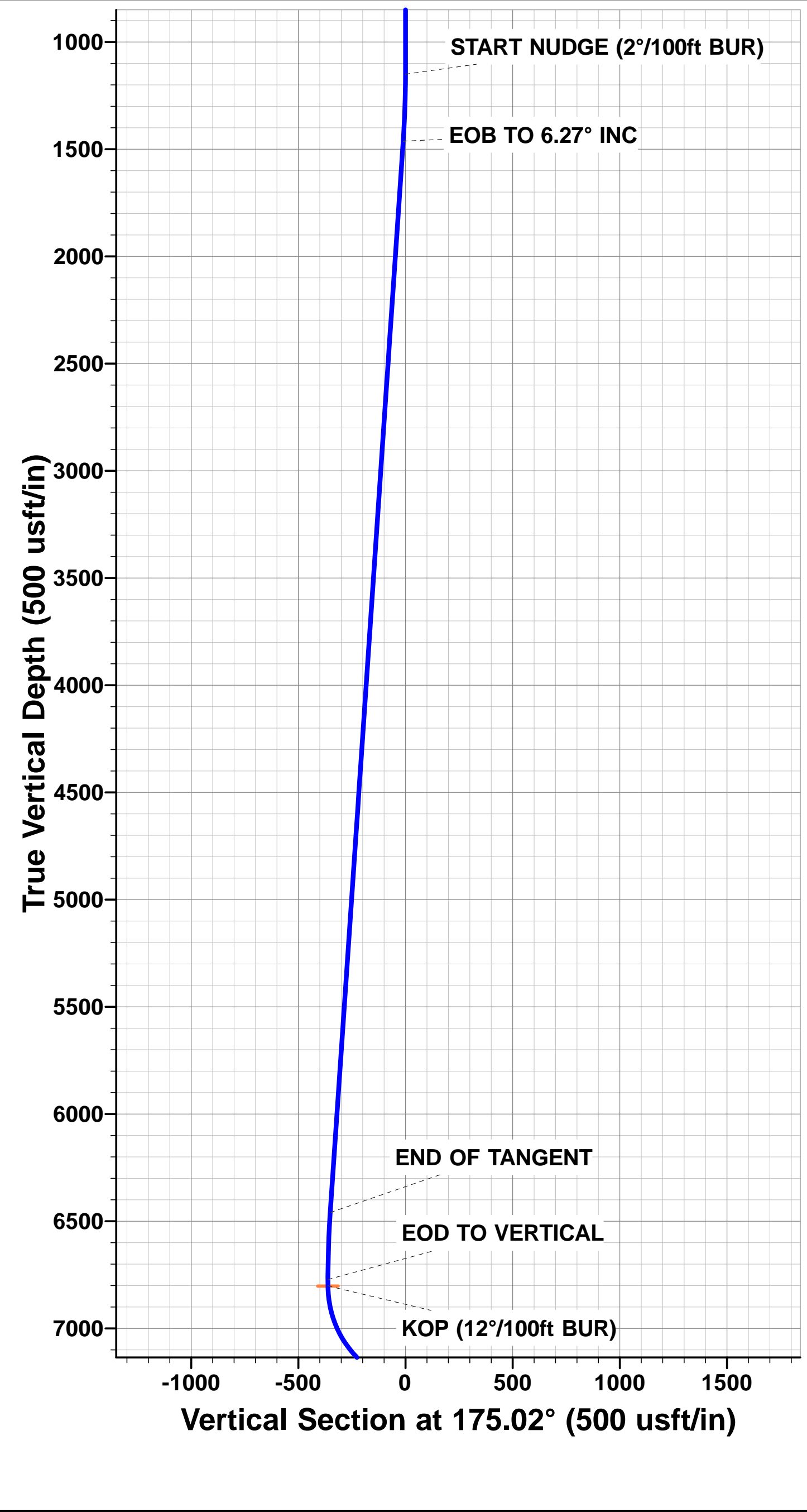




Project: WELD COUNTY, COLORADO (NAD 83)
Site: SEC. 14 T2N R68W 6th P.M.
Well: BYBEE 3
Wellbore: ORIGINAL WELLBORE
Design: PROPOSAL #3

ANNOTATIONS									FORMATION TOP DETAILS		
TVD	MD	Inc	Azi	+N/-S	+E/-W	VSect	Dep	Annotation	TVDPath	MDPath	Formation
1150.0	1150.0	0.00	0.00	0.0	0.0	0.0	0.0	START NUDGE (2°/100ft BUR)	3567.0	3580.3	PARKMAN
1462.9	1463.5	6.27	46.72	11.7	12.5	-10.6	17.1	EOB TO 6.27° INC	4385.0	4403.2	SUSSEX
6459.6	6490.3	6.27	46.72	388.2	412.2	-350.9	566.2	END OF TANGENT	4941.0	4962.6	SHANNON
6772.5	6803.8	0.00	46.72	399.9	424.7	-361.5	583.3	EOD TO VERTICAL	7125.0	7187.9	SHARON SPRINGS
6802.5	6833.8	0.00	0.00	399.9	424.7	-361.5	583.3	KOP (12°/100ft BUR)	7158.0	7234.8	NIOBRARA
7280.0	7583.9	90.00	179.83	-77.6	426.1	114.3	1060.9	7" ICP - BYBEE 3 (P3)	7280.0	7583.9	NIO B TARGET
7280.0	12567.4	90.00	179.83	-5061.1	440.7	5080.2	6044.4	BHL - BYBEE 3 (P3)			

WELLBORE TARGET DETAILS (LAT/LONG)					
Name	TVD	+N/-S	+E/-W	Latitude	Longitude
KOP - BYBEE 3 (P3)	6802.5	399.9	424.7	40.138759	-104.963554
7" ICP - BYBEE 3 (P3)	7280.0	-77.6	426.1	40.137448	-104.963549
BHL - BYBEE 3 (P3)	7280.0	-5061.1	440.7	40.123768	-104.963497



Planning Report



Database:	EDM 5000.1 Single User Db	Local Co-ordinate Reference:	Well BYBEE 3
Company:	EXTRACTION OIL & GAS	TVD Reference:	KB-EST @ 4913.0usft (Original Well Elev)
Project:	WELD COUNTY, COLORADO (NAD 83)	MD Reference:	KB-EST @ 4913.0usft (Original Well Elev)
Site:	SEC. 14 T2N R68W 6th P.M.	North Reference:	True
Well:	BYBEE 3	Survey Calculation Method:	Minimum Curvature
Wellbore:	ORIGINAL WELLBORE		
Design:	PROPOSAL #3		

Project	WELD COUNTY, COLORADO (NAD 83)		
Map System:	US State Plane 1983	System Datum:	Mean Sea Level
Geo Datum:	North American Datum 1983		
Map Zone:	Colorado Northern Zone		Using geodetic scale factor

Site	SEC. 14 T2N R68W 6th P.M.		
Site Position:		Northing:	1,293,444.96 usft
From:	Lat/Long	Easting:	3,149,614.50 usft
Position Uncertainty:	0.0 usft	Slot Radius:	1.10000ft
		Latitude:	40.137661
		Longitude:	-104.964872
		Grid Convergence:	0.35 °

Well	BYBEE 3		
Well Position	+N/-S	0.0 usft	Northing: 1,293,444.60 usfi
	+E/-W	-56.2 usft	Easting: 3,149,558.31 usfi
Position Uncertainty	0.0 usft	Wellhead Elevation:	usfi
		Latitude:	40.137661
		Longitude:	-104.965073
		Ground Level:	4,889.0 usft

Wellbore	ORIGINAL WELLBORE				
Magnetics	Model Name	Sample Date	Declination (°)	Dip Angle (°)	Field Strength (nT)
	IGRF2010	15/10/2014	8.50	66.69	52,621

Design	PROPOSAL #3			
Audit Notes:				
Version:	Phase:	PROTOTYPE	Tie On Depth:	0.0
Vertical Section:	Depth From (TVD) (usft)	+N/-S (usft)	+E/-W (usft)	Direction (°)
	0.0	0.0	0.0	175.02

Plan Sections											
MD (usft)	Inc (°)	Azi (°)	Vertical Depth	SS (usft)	+N/-S (usft)	+E/-W (usft)	Dogleg Rate (°/100usf)	Build Rate (°/100usf)	Turn Rate (°/100usf)	TFO (°)	Target
0.0	0.00	0.00	0.0	-4,913.0	0.0	0.0	0.00	0.00	0.00	0.00	
1,150.0	0.00	0.00	1,150.0	-3,763.0	0.0	0.0	0.00	0.00	0.00	0.00	
1,463.5	6.27	46.72	1,462.9	-3,450.1	11.8	12.5	2.00	2.00	0.00	46.72	
6,490.3	6.27	46.72	6,459.6	1,546.6	388.1	412.2	0.00	0.00	0.00	0.00	
6,803.8	0.00	0.00	6,772.5	1,859.5	399.9	424.7	2.00	-2.00	0.00	180.00	
6,833.8	0.00	0.00	6,802.5	1,889.5	399.9	424.7	0.00	0.00	0.00	0.00	KOP - BYBEE 3 (P
7,583.9	90.00	179.83	7,280.0	2,367.0	-77.6	426.1	12.00	12.00	23.98	179.83	7" ICP - BYBEE 3 (
12,567.4	90.00	179.83	7,280.0	2,367.0	-5,061.1	440.7	0.00	0.00	0.00	16.88	BHL - BYBEE 3 (P

Planning Report



Database:	EDM 5000.1 Single User Db	Local Co-ordinate Reference:	Well BYBEE 3
Company:	EXTRACTION OIL & GAS	TVD Reference:	KB-EST @ 4913.0usft (Original Well Elev)
Project:	WELD COUNTY, COLORADO (NAD 83)	MD Reference:	KB-EST @ 4913.0usft (Original Well Elev)
Site:	SEC. 14 T2N R68W 6th P.M.	North Reference:	True
Well:	BYBEE 3	Survey Calculation Method:	Minimum Curvature
Wellbore:	ORIGINAL WELLBORE		
Design:	PROPOSAL #3		

Planned Survey

MD (usft)	Inc (°)	Azi (°)	TVD (usft)	SS (usft)	+N/-S (usft)	+E/-W (usft)	Vertical Section (usft)	Dogleg Rate (°/100usft)	Build Rate (°/100usft)	Turn Rate (°/100usft)
0.0	0.00	0.00	0.0	4,913.00	0.0	0.0	0.0	0.00	0.00	0.00
100.0	0.00	0.00	100.0	4,813.00	0.0	0.0	0.0	0.00	0.00	0.00
200.0	0.00	0.00	200.0	4,713.00	0.0	0.0	0.0	0.00	0.00	0.00
300.0	0.00	0.00	300.0	4,613.00	0.0	0.0	0.0	0.00	0.00	0.00
400.0	0.00	0.00	400.0	4,513.00	0.0	0.0	0.0	0.00	0.00	0.00
500.0	0.00	0.00	500.0	4,413.00	0.0	0.0	0.0	0.00	0.00	0.00
600.0	0.00	0.00	600.0	4,313.00	0.0	0.0	0.0	0.00	0.00	0.00
700.0	0.00	0.00	700.0	4,213.00	0.0	0.0	0.0	0.00	0.00	0.00
800.0	0.00	0.00	800.0	4,113.00	0.0	0.0	0.0	0.00	0.00	0.00
900.0	0.00	0.00	900.0	4,013.00	0.0	0.0	0.0	0.00	0.00	0.00
1,000.0	0.00	0.00	1,000.0	3,913.00	0.0	0.0	0.0	0.00	0.00	0.00
1,100.0	0.00	0.00	1,100.0	3,813.00	0.0	0.0	0.0	0.00	0.00	0.00
START NUDGE (2°/100ft BUR)										
1,150.0	0.00	0.00	1,150.0	3,763.00	0.0	0.0	0.0	0.00	0.00	0.00
1,200.0	1.00	46.72	1,200.0	3,713.00	0.3	0.3	-0.3	2.00	2.00	0.00
1,300.0	3.00	46.72	1,299.9	3,613.07	2.7	2.9	-2.4	2.00	2.00	0.00
1,400.0	5.00	46.72	1,399.7	3,513.32	7.5	7.9	-6.8	2.00	2.00	0.00
EOB TO 6.27° INC										
1,463.5	6.27	46.72	1,462.9	3,450.13	11.7	12.5	-10.6	2.00	2.00	0.00
1,500.0	6.27	46.72	1,499.2	3,413.84	14.5	15.4	-13.1	0.00	0.00	0.00
1,600.0	6.27	46.72	1,598.6	3,314.44	22.0	23.3	-19.9	0.00	0.00	0.00
1,700.0	6.27	46.72	1,698.0	3,215.04	29.5	31.3	-26.6	0.00	0.00	0.00
1,800.0	6.27	46.72	1,797.4	3,115.64	36.9	39.2	-33.4	0.00	0.00	0.00
1,900.0	6.27	46.72	1,896.8	3,016.24	44.4	47.2	-40.2	0.00	0.00	0.00
2,000.0	6.27	46.72	1,996.2	2,916.84	51.9	55.1	-46.9	0.00	0.00	0.00
2,100.0	6.27	46.72	2,095.6	2,817.43	59.4	63.1	-53.7	0.00	0.00	0.00
2,200.0	6.27	46.72	2,195.0	2,718.03	66.9	71.0	-60.5	0.00	0.00	0.00
2,300.0	6.27	46.72	2,294.4	2,618.63	74.4	79.0	-67.3	0.00	0.00	0.00
2,400.0	6.27	46.72	2,393.8	2,519.23	81.9	86.9	-74.0	0.00	0.00	0.00
2,500.0	6.27	46.72	2,493.2	2,419.83	89.4	94.9	-80.8	0.00	0.00	0.00
2,600.0	6.27	46.72	2,592.6	2,320.43	96.8	102.9	-87.6	0.00	0.00	0.00
2,700.0	6.27	46.72	2,692.0	2,221.02	104.3	110.8	-94.3	0.00	0.00	0.00
2,800.0	6.27	46.72	2,791.4	2,121.62	111.8	118.8	-101.1	0.00	0.00	0.00
2,900.0	6.27	46.72	2,890.8	2,022.22	119.3	126.7	-107.9	0.00	0.00	0.00
3,000.0	6.27	46.72	2,990.2	1,922.82	126.8	134.7	-114.6	0.00	0.00	0.00
3,100.0	6.27	46.72	3,089.6	1,823.42	134.3	142.6	-121.4	0.00	0.00	0.00
3,200.0	6.27	46.72	3,189.0	1,724.02	141.8	150.6	-128.2	0.00	0.00	0.00
3,300.0	6.27	46.72	3,288.4	1,624.61	149.3	158.5	-134.9	0.00	0.00	0.00
3,400.0	6.27	46.72	3,387.8	1,525.21	156.8	166.5	-141.7	0.00	0.00	0.00
3,500.0	6.27	46.72	3,487.2	1,425.81	164.2	174.4	-148.5	0.00	0.00	0.00
PARKMAN										
3,580.3	6.27	46.72	3,567.0	1,346.00	170.3	180.8	-153.9	0.00	0.00	0.00
3,600.0	6.27	46.72	3,586.6	1,326.41	171.7	182.4	-155.3	0.00	0.00	0.00
3,700.0	6.27	46.72	3,686.0	1,227.01	179.2	190.3	-162.0	0.00	0.00	0.00
3,800.0	6.27	46.72	3,785.4	1,127.61	186.7	198.3	-168.8	0.00	0.00	0.00
3,900.0	6.27	46.72	3,884.8	1,028.20	194.2	206.2	-175.6	0.00	0.00	0.00
4,000.0	6.27	46.72	3,984.2	928.80	201.7	214.2	-182.3	0.00	0.00	0.00
4,100.0	6.27	46.72	4,083.6	829.40	209.2	222.1	-189.1	0.00	0.00	0.00
4,200.0	6.27	46.72	4,183.0	730.00	216.7	230.1	-195.9	0.00	0.00	0.00
4,300.0	6.27	46.72	4,282.4	630.60	224.1	238.0	-202.6	0.00	0.00	0.00
4,400.0	6.27	46.72	4,381.8	531.20	231.6	246.0	-209.4	0.00	0.00	0.00
SUSSEX										
4,403.2	6.27	46.72	4,385.0	528.00	231.9	246.3	-209.6	0.00	0.00	0.00
4,500.0	6.27	46.72	4,481.2	431.79	239.1	253.9	-216.2	0.00	0.00	0.00

Database:	EDM 5000.1 Single User Db	Local Co-ordinate Reference:	Well BYBEE 3
Company:	EXTRACTION OIL & GAS	TVD Reference:	KB-EST @ 4913.0usft (Original Well Elev)
Project:	WELD COUNTY, COLORADO (NAD 83)	MD Reference:	KB-EST @ 4913.0usft (Original Well Elev)
Site:	SEC. 14 T2N R68W 6th P.M.	North Reference:	True
Well:	BYBEE 3	Survey Calculation Method:	Minimum Curvature
Wellbore:	ORIGINAL WELLBORE		
Design:	PROPOSAL #3		

Planned Survey

MD (usft)	Inc (°)	Azi (°)	TVD (usft)	SS (usft)	+N/-S (usft)	+E/-W (usft)	Vertical Section (usft)	Dogleg Rate (°/100usft)	Build Rate (°/100usft)	Turn Rate (°/100usft)
4,600.0	6.27	46.72	4,580.6	332.39	246.6	261.9	-223.0	0.00	0.00	0.00
4,700.0	6.27	46.72	4,680.0	232.99	254.1	269.9	-229.7	0.00	0.00	0.00
4,800.0	6.27	46.72	4,779.4	133.59	261.6	277.8	-236.5	0.00	0.00	0.00
4,900.0	6.27	46.72	4,878.8	34.19	269.1	285.8	-243.3	0.00	0.00	0.00
SHANNON										
4,962.6	6.27	46.72	4,941.0	-28.00	273.8	290.7	-247.5	0.00	0.00	0.00
5,000.0	6.27	46.72	4,978.2	-65.21	276.6	293.7	-250.0	0.00	0.00	0.00
5,100.0	6.27	46.72	5,077.6	-164.62	284.0	301.7	-256.8	0.00	0.00	0.00
5,200.0	6.27	46.72	5,177.0	-264.02	291.5	309.6	-263.6	0.00	0.00	0.00
5,300.0	6.27	46.72	5,276.4	-363.42	299.0	317.6	-270.3	0.00	0.00	0.00
5,400.0	6.27	46.72	5,375.8	-462.82	306.5	325.5	-277.1	0.00	0.00	0.00
5,500.0	6.27	46.72	5,475.2	-562.22	314.0	333.5	-283.9	0.00	0.00	0.00
5,600.0	6.27	46.72	5,574.6	-661.62	321.5	341.4	-290.7	0.00	0.00	0.00
5,700.0	6.27	46.72	5,674.0	-761.03	329.0	349.4	-297.4	0.00	0.00	0.00
5,800.0	6.27	46.72	5,773.4	-860.43	336.5	357.3	-304.2	0.00	0.00	0.00
5,900.0	6.27	46.72	5,872.8	-959.83	343.9	365.3	-311.0	0.00	0.00	0.00
6,000.0	6.27	46.72	5,972.2	-1,059.23	351.4	373.2	-317.7	0.00	0.00	0.00
6,100.0	6.27	46.72	6,071.6	-1,158.63	358.9	381.2	-324.5	0.00	0.00	0.00
6,200.0	6.27	46.72	6,171.0	-1,258.03	366.4	389.1	-331.3	0.00	0.00	0.00
6,300.0	6.27	46.72	6,270.4	-1,357.44	373.9	397.1	-338.0	0.00	0.00	0.00
6,400.0	6.27	46.72	6,369.8	-1,456.84	381.4	405.0	-344.8	0.00	0.00	0.00
END OF TANGENT										
6,490.3	6.27	46.72	6,459.6	-1,546.60	388.2	412.2	-350.9	0.00	0.00	0.00
6,500.0	6.08	46.72	6,469.2	-1,556.24	388.9	413.0	-351.6	2.00	-2.00	0.00
6,600.0	4.08	46.72	6,568.8	-1,655.84	394.9	419.4	-357.1	2.00	-2.00	0.00
6,700.0	2.08	46.72	6,668.7	-1,755.70	398.6	423.3	-360.4	2.00	-2.00	0.00
6,800.0	0.08	46.72	6,768.7	-1,855.67	399.9	424.7	-361.5	2.00	-2.00	0.00
EOD TO VERTICAL										
6,803.8	0.00	46.72	6,772.5	-1,859.47	399.9	424.7	-361.5	2.00	-2.00	0.00
KOP (12°/100ft BUR)										
6,833.8	0.00	0.00	6,802.5	-1,889.47	399.9	424.7	-361.5	0.00	0.00	0.00
6,900.0	7.94	179.83	6,868.5	-1,955.46	395.3	424.7	-357.0	11.99	11.99	0.00
7,000.0	19.94	179.83	6,965.3	-2,052.34	371.3	424.8	-333.0	12.00	12.00	0.00
7,100.0	31.94	179.83	7,055.1	-2,142.10	327.6	424.9	-289.5	12.00	12.00	0.00
SHARON SPRINGS										
7,187.9	42.48	179.83	7,125.0	-2,212.00	274.5	425.1	-236.6	12.00	12.00	0.00
7,200.0	43.94	179.83	7,133.8	-2,220.82	266.2	425.1	-228.4	12.00	12.00	0.00
NIOBRARA										
7,234.8	48.12	179.83	7,158.0	-2,245.00	241.2	425.2	-203.4	12.00	12.00	0.00
7,300.0	55.94	179.83	7,198.1	-2,285.07	189.9	425.3	-152.2	12.00	12.00	0.00
7,400.0	67.94	179.83	7,245.0	-2,332.03	101.8	425.6	-64.5	12.00	12.00	0.00
7,500.0	79.93	179.83	7,272.7	-2,359.65	5.9	425.9	31.1	12.00	12.00	0.00
7" ICP - BYBEE 3 (P3) - NIO B TARGET										
7,583.9	90.00	179.83	7,280.0	-2,367.00	-77.6	426.1	114.2	12.00	12.00	0.00
7,600.0	90.00	179.83	7,280.0	-2,367.00	-93.7	426.2	130.3	0.00	0.00	0.00
7,700.0	90.00	179.83	7,280.0	-2,367.01	-193.7	426.5	230.0	0.00	0.00	0.00
7,800.0	90.00	179.83	7,280.0	-2,367.01	-293.7	426.7	329.6	0.00	0.00	0.00
7,900.0	90.00	179.83	7,280.0	-2,367.02	-393.7	427.0	429.3	0.00	0.00	0.00
8,000.0	90.00	179.83	7,280.0	-2,367.03	-493.7	427.3	528.9	0.00	0.00	0.00
8,100.0	90.00	179.83	7,280.0	-2,367.03	-593.7	427.6	628.6	0.00	0.00	0.00
8,200.0	90.00	179.83	7,280.0	-2,367.04	-693.7	427.9	728.2	0.00	0.00	0.00
8,300.0	90.00	179.83	7,280.0	-2,367.04	-793.7	428.2	827.9	0.00	0.00	0.00
8,400.0	90.00	179.83	7,280.0	-2,367.05	-893.7	428.5	927.5	0.00	0.00	0.00

Planning Report



Database:	EDM 5000.1 Single User Db	Local Co-ordinate Reference:	Well BYBEE 3
Company:	EXTRACTION OIL & GAS	TVD Reference:	KB-EST @ 4913.0usft (Original Well Elev)
Project:	WELD COUNTY, COLORADO (NAD 83)	MD Reference:	KB-EST @ 4913.0usft (Original Well Elev)
Site:	SEC. 14 T2N R68W 6th P.M.	North Reference:	True
Well:	BYBEE 3	Survey Calculation Method:	Minimum Curvature
Wellbore:	ORIGINAL WELLBORE		
Design:	PROPOSAL #3		

Planned Survey										
MD (usft)	Inc (°)	Azi (°)	TVD (usft)	SS (usft)	+N/-S (usft)	+E/-W (usft)	Vertical Section (usft)	Dogleg Rate (°/100usft)	Build Rate (°/100usft)	Turn Rate (°/100usft)
8,500.0	90.00	179.83	7,280.0	-2,367.05	-993.7	428.8	1,027.2	0.00	0.00	0.00
8,600.0	90.00	179.83	7,280.1	-2,367.05	-1,093.7	429.1	1,126.8	0.00	0.00	0.00
8,700.0	90.00	179.83	7,280.1	-2,367.06	-1,193.7	429.4	1,226.5	0.00	0.00	0.00
8,800.0	90.00	179.83	7,280.1	-2,367.06	-1,293.7	429.7	1,326.1	0.00	0.00	0.00
8,900.0	90.00	179.83	7,280.1	-2,367.06	-1,393.7	430.0	1,425.8	0.00	0.00	0.00
9,000.0	90.00	179.83	7,280.1	-2,367.07	-1,493.7	430.3	1,525.4	0.00	0.00	0.00
9,100.0	90.00	179.83	7,280.1	-2,367.07	-1,593.7	430.6	1,625.1	0.00	0.00	0.00
9,200.0	90.00	179.83	7,280.1	-2,367.07	-1,693.7	430.9	1,724.7	0.00	0.00	0.00
9,300.0	90.00	179.83	7,280.1	-2,367.08	-1,793.7	431.2	1,824.4	0.00	0.00	0.00
9,400.0	90.00	179.83	7,280.1	-2,367.08	-1,893.7	431.5	1,924.0	0.00	0.00	0.00
9,500.0	90.00	179.83	7,280.1	-2,367.08	-1,993.7	431.8	2,023.6	0.00	0.00	0.00
9,600.0	90.00	179.83	7,280.1	-2,367.08	-2,093.7	432.1	2,123.3	0.00	0.00	0.00
9,700.0	90.00	179.83	7,280.1	-2,367.08	-2,193.7	432.3	2,222.9	0.00	0.00	0.00
9,800.0	90.00	179.83	7,280.1	-2,367.08	-2,293.7	432.6	2,322.6	0.00	0.00	0.00
9,900.0	90.00	179.83	7,280.1	-2,367.08	-2,393.7	432.9	2,422.2	0.00	0.00	0.00
10,000.0	90.00	179.83	7,280.1	-2,367.08	-2,493.7	433.2	2,521.9	0.00	0.00	0.00
10,100.0	90.00	179.83	7,280.1	-2,367.08	-2,593.7	433.5	2,621.5	0.00	0.00	0.00
10,200.0	90.00	179.83	7,280.1	-2,367.08	-2,693.7	433.8	2,721.2	0.00	0.00	0.00
10,300.0	90.00	179.83	7,280.1	-2,367.08	-2,793.7	434.1	2,820.8	0.00	0.00	0.00
10,400.0	90.00	179.83	7,280.1	-2,367.08	-2,893.7	434.4	2,920.5	0.00	0.00	0.00
10,500.0	90.00	179.83	7,280.1	-2,367.08	-2,993.7	434.7	3,020.1	0.00	0.00	0.00
10,600.0	90.00	179.83	7,280.1	-2,367.08	-3,093.7	435.0	3,119.8	0.00	0.00	0.00
10,700.0	90.00	179.83	7,280.1	-2,367.08	-3,193.7	435.3	3,219.4	0.00	0.00	0.00
10,800.0	90.00	179.83	7,280.1	-2,367.08	-3,293.7	435.6	3,319.1	0.00	0.00	0.00
10,900.0	90.00	179.83	7,280.1	-2,367.07	-3,393.7	435.9	3,418.7	0.00	0.00	0.00
11,000.0	90.00	179.83	7,280.1	-2,367.07	-3,493.7	436.2	3,518.4	0.00	0.00	0.00
11,100.0	90.00	179.83	7,280.1	-2,367.07	-3,593.7	436.5	3,618.0	0.00	0.00	0.00
11,200.0	90.00	179.83	7,280.1	-2,367.07	-3,693.7	436.7	3,717.7	0.00	0.00	0.00
11,300.0	90.00	179.83	7,280.1	-2,367.06	-3,793.7	437.0	3,817.3	0.00	0.00	0.00
11,400.0	90.00	179.83	7,280.1	-2,367.06	-3,893.7	437.3	3,917.0	0.00	0.00	0.00
11,500.0	90.00	179.83	7,280.1	-2,367.06	-3,993.7	437.6	4,016.6	0.00	0.00	0.00
11,600.0	90.00	179.83	7,280.1	-2,367.05	-4,093.7	437.9	4,116.3	0.00	0.00	0.00
11,700.0	90.00	179.83	7,280.0	-2,367.05	-4,193.7	438.2	4,215.9	0.00	0.00	0.00
11,800.0	90.00	179.83	7,280.0	-2,367.04	-4,293.7	438.5	4,315.6	0.00	0.00	0.00
11,900.0	90.00	179.83	7,280.0	-2,367.04	-4,393.7	438.8	4,415.2	0.00	0.00	0.00
12,000.0	90.00	179.83	7,280.0	-2,367.03	-4,493.7	439.1	4,514.8	0.00	0.00	0.00
12,100.0	90.00	179.83	7,280.0	-2,367.03	-4,593.7	439.4	4,614.5	0.00	0.00	0.00
12,200.0	90.00	179.83	7,280.0	-2,367.02	-4,693.7	439.7	4,714.1	0.00	0.00	0.00
12,300.0	90.00	179.83	7,280.0	-2,367.02	-4,793.7	440.0	4,813.8	0.00	0.00	0.00
12,400.0	90.00	179.83	7,280.0	-2,367.01	-4,893.7	440.3	4,913.4	0.00	0.00	0.00
12,500.0	90.00	179.83	7,280.0	-2,367.00	-4,993.7	440.5	5,013.1	0.00	0.00	0.00
BHL - BYBEE 3 (P3)										
12,567.4	90.00	179.83	7,280.0	-2,367.00	-5,061.1	440.7	5,080.2	0.00	0.00	0.00

Database:	EDM 5000.1 Single User Db	Local Co-ordinate Reference:	Well BYBEE 3
Company:	EXTRACTION OIL & GAS	TVD Reference:	KB-EST @ 4913.0usft (Original Well Elev)
Project:	WELD COUNTY, COLORADO (NAD 83)	MD Reference:	KB-EST @ 4913.0usft (Original Well Elev)
Site:	SEC. 14 T2N R68W 6th P.M.	North Reference:	True
Well:	BYBEE 3	Survey Calculation Method:	Minimum Curvature
Wellbore:	ORIGINAL WELLBORE		
Design:	PROPOSAL #3		

Formations					
MD (usft)	TVD (usft)	Name	Lithology	Dip (°)	Dip Direction (°)
3,580.3	3,567.0	PARKMAN		0.00	
4,403.2	4,385.0	SUSSEX		0.00	
4,962.6	4,941.0	SHANNON		0.00	
7,187.9	7,125.0	SHARON SPRINGS		0.00	
7,234.8	7,158.0	NIOBRARA		0.00	
7,583.9	7,280.0	NIO B TARGET		0.00	

Plan Annotations				
MD (usft)	TVD (usft)	Local Coordinates		Comment
		+N/-S (usft)	+E/-W (usft)	
1,150.0	1,150.0	0.0	0.0	START NUDGE (2°/100ft BUR)
1,463.5	1,462.9	11.7	12.5	EOB TO 6.27° INC
6,490.3	6,459.6	388.2	412.2	END OF TANGENT
6,803.8	6,772.5	399.9	424.7	EOD TO VERTICAL
6,833.8	6,802.5	399.9	424.7	KOP (12°/100ft BUR)
7,583.9	7,280.0	-77.6	426.1	7" ICP - BYBEE 3 (P3)
12,567.4	7,280.0	-5,061.1	440.7	BHL - BYBEE 3 (P3)