

# **EXTRACTION OIL & GAS**

**WELD COUNTY, COLORADO (NAD 83)**

**SEC. 14 T2N R68W 6th P.M.**

**BYBEE 1**

**ORIGINAL WELLBORE**

**17 March, 2015**

**Plan: PROPOSAL #3**

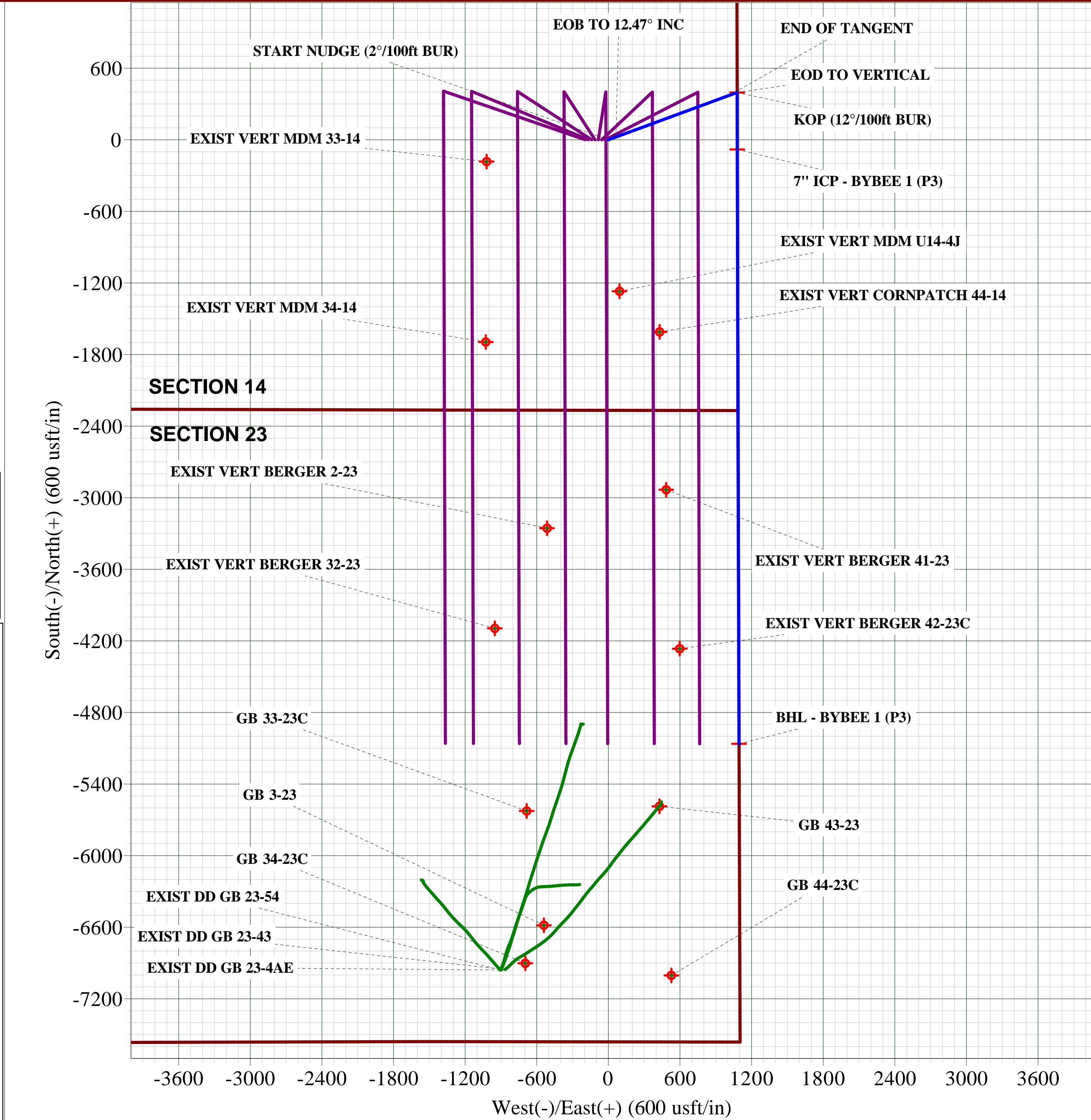
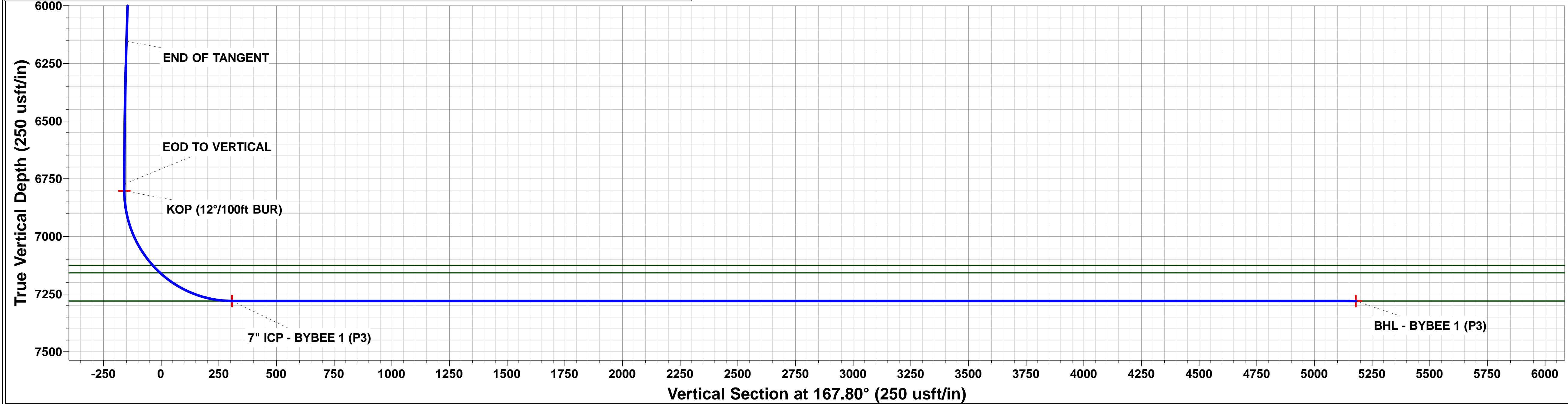
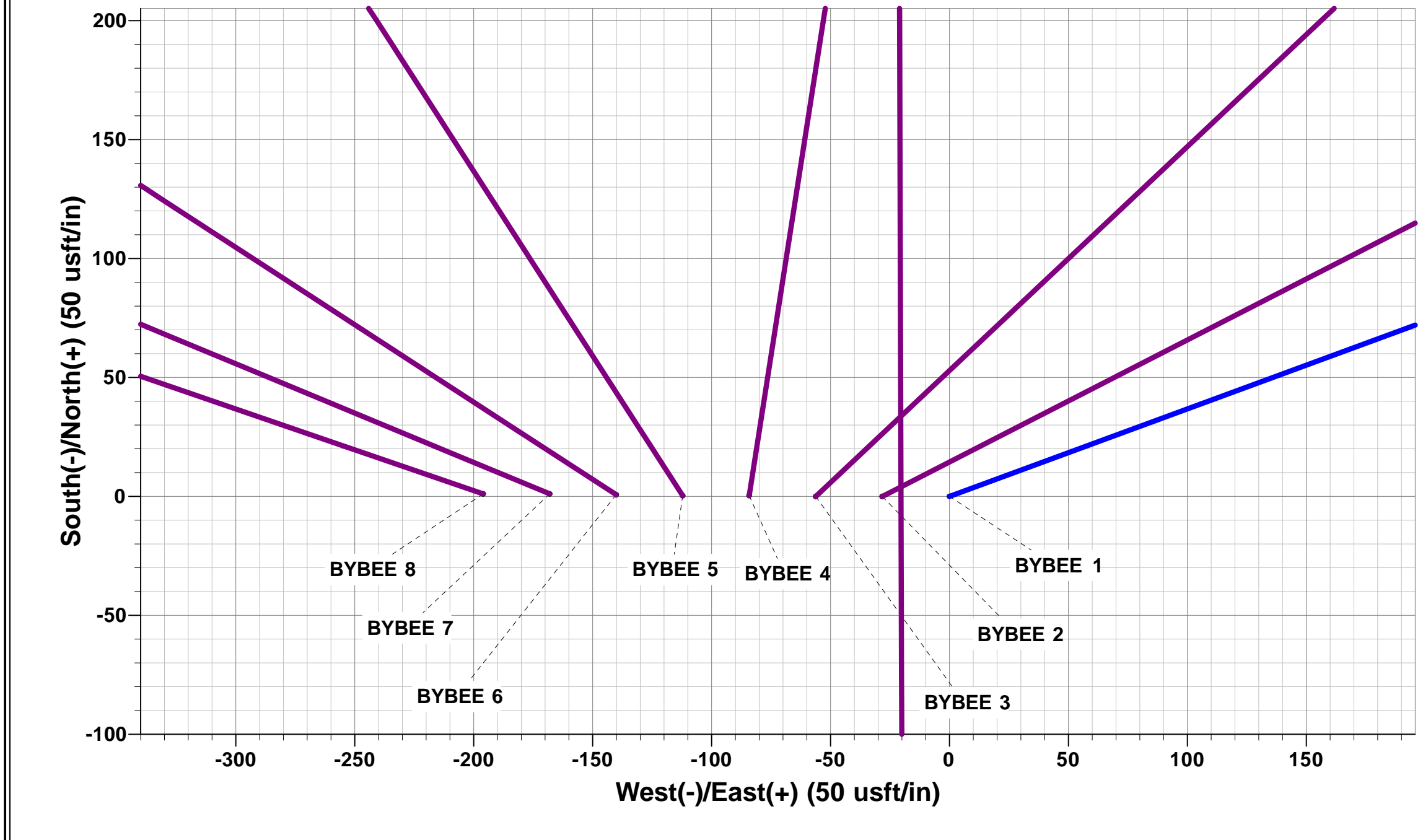
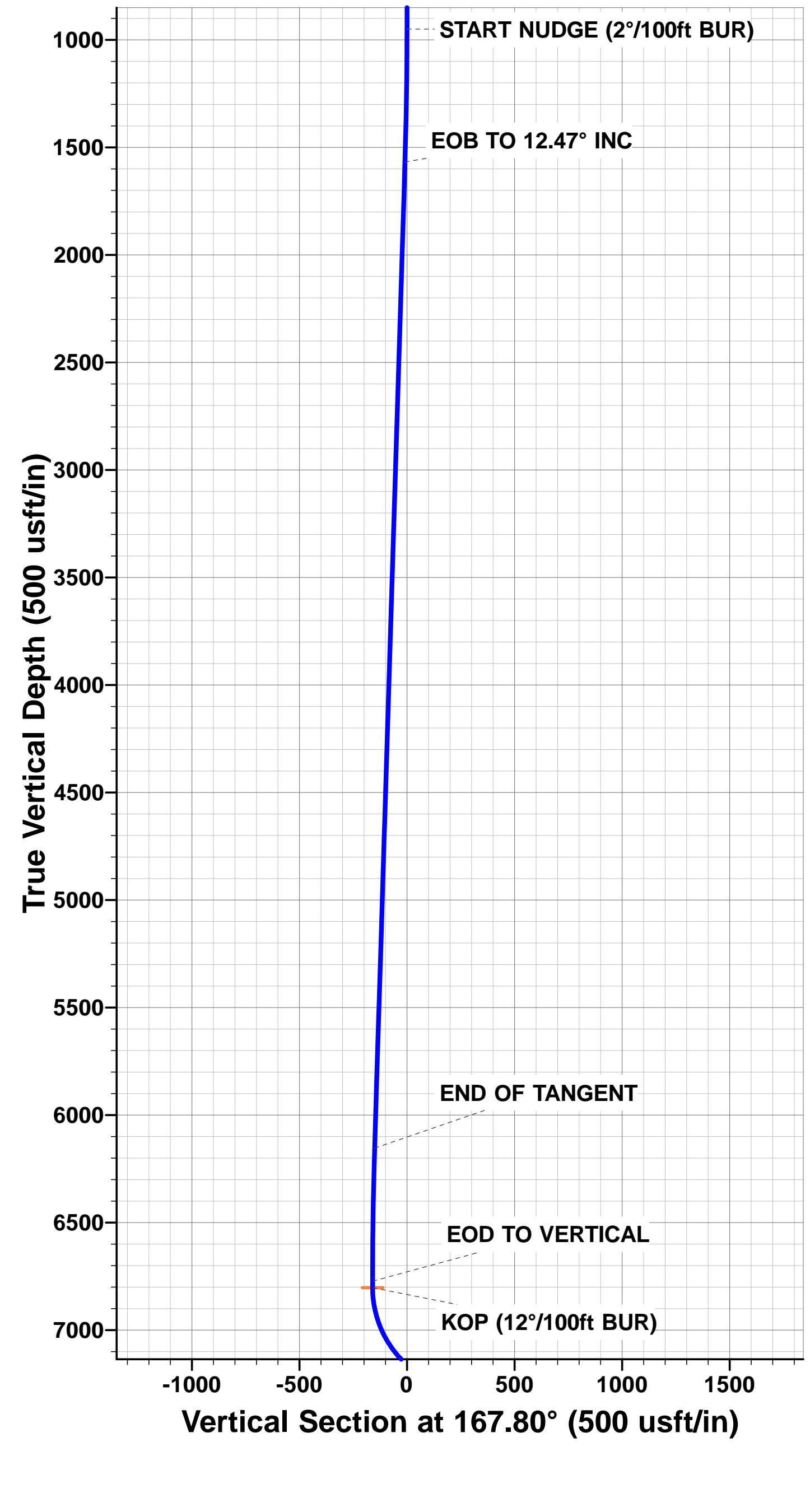




Project: WELD COUNTY, COLORADO (NAD 83)  
Site: SEC. 14 T2N R68W 6th P.M.  
Well: BYBEE 1  
Wellbore: ORIGINAL WELLBORE  
Design: PROPOSAL #3

ANNOTATIONS									FORMATION TOP DETAILS		
TVD	MD	Inc	Azi	+N/-S	+E/-W	VSect	Dep	Annotation	TVDPATH	MDPATH	Formation
950.0	950.0	0.00	0.00	0.0	0.0	0.0	0.0	START NUDGE (2°/100ft BUR)	3567.0	3620.2	PARKMAN
1568.5	1573.4	12.47	69.80	23.3	63.4	-9.4	67.6	EOB TO 12.47° INC	4385.0	4457.9	SUSSEX
6154.0	6269.7	12.47	69.80	373.4	1015.0	-150.4	1081.5	END OF TANGENT	4941.0	5027.4	SHANNON
6772.5	6893.1	0.00	0.00	396.7	1078.4	-159.8	1149.1	EOD TO VERTICAL	7125.0	7277.1	SHARON SPRINGS
6802.5	6923.1	0.00	0.00	396.7	1078.4	-159.8	1149.1	KOP (12°/100ft BUR)	7158.0	7324.1	NIOBRARA
7280.0	7673.1	90.00	179.83	-80.8	1079.8	307.2	1626.5	7" ICP - BYBEE 1 (P3)	7280.0	7673.1	NIO B TARGET
7280.0	12654.5	90.00	179.83	-5062.2	1094.6	5179.2	6607.9	BHL - BYBEE 1 (P3)			

WELLBORE TARGET DETAILS (LAT/LONG)					
Name	TVD	+N/-S	+E/-W	Latitude	Longitude
KOP - BYBEE 1 (P3)	6802.5	396.7	1078.4	40.138750	-104.961015
7" ICP - BYBEE 1 (P3)	7280.0	-80.8	1079.8	40.137439	-104.961010
BHL - BYBEE 1 (P3)	7280.0	-5062.2	1094.6	40.123765	-104.960958



# Planning Report



<b>Database:</b>	EDM 5000.1 Single User Db	<b>Local Co-ordinate Reference:</b>	Well BYBEE 1
<b>Company:</b>	EXTRACTION OIL & GAS	<b>TVD Reference:</b>	KB-EST @ 4913.0usft (Original Well Elev)
<b>Project:</b>	WELD COUNTY, COLORADO (NAD 83)	<b>MD Reference:</b>	KB-EST @ 4913.0usft (Original Well Elev)
<b>Site:</b>	SEC. 14 T2N R68W 6th P.M.	<b>North Reference:</b>	True
<b>Well:</b>	BYBEE 1	<b>Survey Calculation Method:</b>	Minimum Curvature
<b>Wellbore:</b>	ORIGINAL WELLBORE		
<b>Design:</b>	PROPOSAL #3		

<b>Project</b>	WELD COUNTY, COLORADO (NAD 83)		
<b>Map System:</b>	US State Plane 1983	<b>System Datum:</b>	Mean Sea Level
<b>Geo Datum:</b>	North American Datum 1983		
<b>Map Zone:</b>	Colorado Northern Zone		Using geodetic scale factor

<b>Site</b>	SEC. 14 T2N R68W 6th P.M.		
<b>Site Position:</b>		<b>Northing:</b>	1,293,444.96 usft
<b>From:</b>	Lat/Long	<b>Easting:</b>	3,149,614.50 usft
<b>Position Uncertainty:</b>	0.0 usft	<b>Slot Radius:</b>	1.10000ft
		<b>Latitude:</b>	40.137661
		<b>Longitude:</b>	-104.964872
		<b>Grid Convergence:</b>	0.35 °

<b>Well</b>	BYBEE 1		
<b>Well Position</b>	<b>+N/-S</b>	0.0 usft	<b>Northing:</b> 1,293,444.96 usft
	<b>+E/-W</b>	0.0 usft	<b>Easting:</b> 3,149,614.50 usft
<b>Position Uncertainty</b>	0.0 usft	<b>Wellhead Elevation:</b>	usft
		<b>Latitude:</b>	40.137661
		<b>Longitude:</b>	-104.964872
		<b>Ground Level:</b>	4,889.0 usft

<b>Wellbore</b>	ORIGINAL WELLBORE				
<b>Magnetics</b>	<b>Model Name</b>	<b>Sample Date</b>	<b>Declination (°)</b>	<b>Dip Angle (°)</b>	<b>Field Strength (nT)</b>
	IGRF2010	15/10/2014	8.50	66.69	52,621

<b>Design</b>	PROPOSAL #3			
<b>Audit Notes:</b>				
<b>Version:</b>	<b>Phase:</b>	PROTOTYPE	<b>Tie On Depth:</b>	0.0
<b>Vertical Section:</b>	<b>Depth From (TVD) (usft)</b>	<b>+N/-S (usft)</b>	<b>+E/-W (usft)</b>	<b>Direction (°)</b>
	7,280.0	0.0	0.0	167.80

<b>Plan Sections</b>											
MD (usft)	Inc (°)	Azi (°)	Vertical Depth	SS (usft)	+N/-S (usft)	+E/-W (usft)	Dogleg Rate (°/100usf)	Build Rate (°/100usf)	Turn Rate (°/100usf)	TFO (°)	Target
0.0	0.00	0.00	0.0	-4,913.0	0.0	0.0	0.00	0.00	0.00	0.00	
950.0	0.00	0.00	950.0	-3,963.0	0.0	0.0	0.00	0.00	0.00	0.00	
1,573.4	12.47	69.80	1,568.5	-3,344.5	23.3	63.4	2.00	2.00	0.00	69.80	
6,269.7	12.47	69.80	6,154.0	1,241.0	373.4	1,015.0	0.00	0.00	0.00	0.00	
6,893.1	0.00	0.00	6,772.5	1,859.5	396.7	1,078.4	2.00	-2.00	0.00	180.00	
6,923.1	0.00	0.00	6,802.5	1,889.5	396.7	1,078.4	0.00	0.00	0.00	0.00	KOP - BYBEE 1 (P
7,673.1	90.00	179.83	7,280.0	2,367.0	-80.8	1,079.8	12.00	12.00	0.00	179.83	
12,654.5	90.00	179.83	7,280.0	2,367.0	-5,062.2	1,094.6	0.00	0.00	0.00	0.00	BHL - BYBEE 1 (P

## Planning Report



<b>Database:</b>	EDM 5000.1 Single User Db	<b>Local Co-ordinate Reference:</b>	Well BYBEE 1
<b>Company:</b>	EXTRACTION OIL & GAS	<b>TVD Reference:</b>	KB-EST @ 4913.0usft (Original Well Elev)
<b>Project:</b>	WELD COUNTY, COLORADO (NAD 83)	<b>MD Reference:</b>	KB-EST @ 4913.0usft (Original Well Elev)
<b>Site:</b>	SEC. 14 T2N R68W 6th P.M.	<b>North Reference:</b>	True
<b>Well:</b>	BYBEE 1	<b>Survey Calculation Method:</b>	Minimum Curvature
<b>Wellbore:</b>	ORIGINAL WELLBORE		
<b>Design:</b>	PROPOSAL #3		

## Planned Survey

MD (usft)	Inc (°)	Azi (°)	TVD (usft)	SS (usft)	+N/-S (usft)	+E/-W (usft)	Vertical Section (usft)	Dogleg Rate (°/100usft)	Build Rate (°/100usft)	Turn Rate (°/100usft)
0.0	0.00	0.00	0.0	4,913.00	0.0	0.0	0.0	0.00	0.00	0.00
100.0	0.00	0.00	100.0	4,813.00	0.0	0.0	0.0	0.00	0.00	0.00
200.0	0.00	0.00	200.0	4,713.00	0.0	0.0	0.0	0.00	0.00	0.00
300.0	0.00	0.00	300.0	4,613.00	0.0	0.0	0.0	0.00	0.00	0.00
400.0	0.00	0.00	400.0	4,513.00	0.0	0.0	0.0	0.00	0.00	0.00
500.0	0.00	0.00	500.0	4,413.00	0.0	0.0	0.0	0.00	0.00	0.00
600.0	0.00	0.00	600.0	4,313.00	0.0	0.0	0.0	0.00	0.00	0.00
700.0	0.00	0.00	700.0	4,213.00	0.0	0.0	0.0	0.00	0.00	0.00
800.0	0.00	0.00	800.0	4,113.00	0.0	0.0	0.0	0.00	0.00	0.00
900.0	0.00	0.00	900.0	4,013.00	0.0	0.0	0.0	0.00	0.00	0.00
<b>START NUDGE (2°/100ft BUR)</b>										
950.0	0.00	0.00	950.0	3,963.00	0.0	0.0	0.0	0.00	0.00	0.00
1,000.0	1.00	69.80	1,000.0	3,913.00	0.2	0.4	-0.1	2.00	2.00	0.00
1,100.0	3.00	69.80	1,099.9	3,813.07	1.4	3.7	-0.5	2.00	2.00	0.00
1,200.0	5.00	69.80	1,199.7	3,713.32	3.8	10.2	-1.5	2.00	2.00	0.00
1,300.0	7.00	69.80	1,299.1	3,613.87	7.4	20.0	-3.0	2.00	2.00	0.00
1,400.0	9.00	69.80	1,398.2	3,514.85	12.2	33.1	-4.9	2.00	2.00	0.00
1,500.0	11.00	69.80	1,496.6	3,416.37	18.2	49.4	-7.3	2.00	2.00	0.00
<b>EOB TO 12.47° INC</b>										
1,573.4	12.47	69.80	1,568.5	3,344.51	23.3	63.4	-9.4	2.00	2.00	0.00
1,600.0	12.47	69.80	1,594.5	3,318.54	25.3	68.8	-10.2	0.00	0.00	0.00
1,700.0	12.47	69.80	1,692.1	3,220.89	32.8	89.1	-13.2	0.00	0.00	0.00
1,800.0	12.47	69.80	1,789.7	3,123.25	40.2	109.3	-16.2	0.00	0.00	0.00
1,900.0	12.47	69.80	1,887.4	3,025.61	47.7	129.6	-19.2	0.00	0.00	0.00
2,000.0	12.47	69.80	1,985.0	2,927.97	55.1	149.8	-22.2	0.00	0.00	0.00
2,100.0	12.47	69.80	2,082.7	2,830.33	62.6	170.1	-25.2	0.00	0.00	0.00
2,200.0	12.47	69.80	2,180.3	2,732.69	70.0	190.4	-28.2	0.00	0.00	0.00
2,300.0	12.47	69.80	2,278.0	2,635.04	77.5	210.6	-31.2	0.00	0.00	0.00
2,400.0	12.47	69.80	2,375.6	2,537.40	84.9	230.9	-34.2	0.00	0.00	0.00
2,500.0	12.47	69.80	2,473.2	2,439.76	92.4	251.2	-37.2	0.00	0.00	0.00
2,600.0	12.47	69.80	2,570.9	2,342.12	99.8	271.4	-40.2	0.00	0.00	0.00
2,700.0	12.47	69.80	2,668.5	2,244.48	107.3	291.7	-43.2	0.00	0.00	0.00
2,800.0	12.47	69.80	2,766.2	2,146.84	114.8	311.9	-46.2	0.00	0.00	0.00
2,900.0	12.47	69.80	2,863.8	2,049.20	122.2	332.2	-49.2	0.00	0.00	0.00
3,000.0	12.47	69.80	2,961.4	1,951.55	129.7	352.5	-52.2	0.00	0.00	0.00
3,100.0	12.47	69.80	3,059.1	1,853.91	137.1	372.7	-55.2	0.00	0.00	0.00
3,200.0	12.47	69.80	3,156.7	1,756.27	144.6	393.0	-58.2	0.00	0.00	0.00
3,300.0	12.47	69.80	3,254.4	1,658.63	152.0	413.3	-61.2	0.00	0.00	0.00
3,400.0	12.47	69.80	3,352.0	1,560.99	159.5	433.5	-64.3	0.00	0.00	0.00
3,500.0	12.47	69.80	3,449.7	1,463.35	166.9	453.8	-67.3	0.00	0.00	0.00
3,600.0	12.47	69.80	3,547.3	1,365.70	174.4	474.0	-70.3	0.00	0.00	0.00
<b>PARKMAN</b>										
3,620.2	12.47	69.80	3,567.0	1,346.00	175.9	478.1	-70.9	0.00	0.00	0.00
3,700.0	12.47	69.80	3,644.9	1,268.06	181.8	494.3	-73.3	0.00	0.00	0.00
3,800.0	12.47	69.80	3,742.6	1,170.42	189.3	514.6	-76.3	0.00	0.00	0.00
3,900.0	12.47	69.80	3,840.2	1,072.78	196.7	534.8	-79.3	0.00	0.00	0.00
4,000.0	12.47	69.80	3,937.9	975.14	204.2	555.1	-82.3	0.00	0.00	0.00
4,100.0	12.47	69.80	4,035.5	877.50	211.7	575.4	-85.3	0.00	0.00	0.00
4,200.0	12.47	69.80	4,133.1	779.86	219.1	595.6	-88.3	0.00	0.00	0.00
4,300.0	12.47	69.80	4,230.8	682.21	226.6	615.9	-91.3	0.00	0.00	0.00
4,400.0	12.47	69.80	4,328.4	584.57	234.0	636.1	-94.3	0.00	0.00	0.00
<b>SUSSEX</b>										
4,457.9	12.47	69.80	4,385.0	528.00	238.3	647.9	-96.0	0.00	0.00	0.00
4,500.0	12.47	69.80	4,426.1	486.93	241.5	656.4	-97.3	0.00	0.00	0.00

## Planning Report



<b>Database:</b>	EDM 5000.1 Single User Db	<b>Local Co-ordinate Reference:</b>	Well BYBEE 1
<b>Company:</b>	EXTRACTION OIL & GAS	<b>TVD Reference:</b>	KB-EST @ 4913.0usft (Original Well Elev)
<b>Project:</b>	WELD COUNTY, COLORADO (NAD 83)	<b>MD Reference:</b>	KB-EST @ 4913.0usft (Original Well Elev)
<b>Site:</b>	SEC. 14 T2N R68W 6th P.M.	<b>North Reference:</b>	True
<b>Well:</b>	BYBEE 1	<b>Survey Calculation Method:</b>	Minimum Curvature
<b>Wellbore:</b>	ORIGINAL WELLBORE		
<b>Design:</b>	PROPOSAL #3		

## Planned Survey

MD (usft)	Inc (°)	Azi (°)	TVD (usft)	SS (usft)	+N/-S (usft)	+E/-W (usft)	Vertical Section (usft)	Dogleg Rate (°/100usft)	Build Rate (°/100usft)	Turn Rate (°/100usft)
4,600.0	12.47	69.80	4,523.7	389.29	248.9	676.7	-100.3	0.00	0.00	0.00
4,700.0	12.47	69.80	4,621.4	291.65	256.4	696.9	-103.3	0.00	0.00	0.00
4,800.0	12.47	69.80	4,719.0	194.01	263.8	717.2	-106.3	0.00	0.00	0.00
4,900.0	12.47	69.80	4,816.6	96.36	271.3	737.5	-109.3	0.00	0.00	0.00
5,000.0	12.47	69.80	4,914.3	-1.28	278.7	757.7	-112.3	0.00	0.00	0.00
<b>SHANNON</b>										
<b>5,027.4</b>	<b>12.47</b>	<b>69.80</b>	<b>4,941.0</b>	<b>-28.00</b>	<b>280.8</b>	<b>763.3</b>	<b>-113.1</b>	<b>0.00</b>	<b>0.00</b>	<b>0.00</b>
5,100.0	12.47	69.80	5,011.9	-98.92	286.2	778.0	-115.3	0.00	0.00	0.00
5,200.0	12.47	69.80	5,109.6	-196.56	293.6	798.2	-118.3	0.00	0.00	0.00
5,300.0	12.47	69.80	5,207.2	-294.20	301.1	818.5	-121.3	0.00	0.00	0.00
5,400.0	12.47	69.80	5,304.8	-391.84	308.6	838.8	-124.3	0.00	0.00	0.00
5,500.0	12.47	69.80	5,402.5	-489.48	316.0	859.0	-127.3	0.00	0.00	0.00
5,600.0	12.47	69.80	5,500.1	-587.13	323.5	879.3	-130.3	0.00	0.00	0.00
5,700.0	12.47	69.80	5,597.8	-684.77	330.9	899.6	-133.3	0.00	0.00	0.00
5,800.0	12.47	69.80	5,695.4	-782.41	338.4	919.8	-136.3	0.00	0.00	0.00
5,900.0	12.47	69.80	5,793.1	-880.05	345.8	940.1	-139.3	0.00	0.00	0.00
6,000.0	12.47	69.80	5,890.7	-977.69	353.3	960.3	-142.3	0.00	0.00	0.00
6,100.0	12.47	69.80	5,988.3	-1,075.33	360.7	980.6	-145.3	0.00	0.00	0.00
6,200.0	12.47	69.80	6,086.0	-1,172.97	368.2	1,000.9	-148.3	0.00	0.00	0.00
<b>END OF TANGENT</b>										
<b>6,269.7</b>	<b>12.47</b>	<b>69.80</b>	<b>6,154.0</b>	<b>-1,241.03</b>	<b>373.4</b>	<b>1,015.0</b>	<b>-150.4</b>	<b>0.00</b>	<b>0.00</b>	<b>0.00</b>
6,300.0	11.86	69.80	6,183.7	-1,270.65	375.6	1,021.0	-151.3	2.00	-2.00	0.00
6,400.0	9.86	69.80	6,281.9	-1,368.85	382.1	1,038.7	-153.9	2.00	-2.00	0.00
6,500.0	7.86	69.80	6,380.7	-1,467.66	387.4	1,053.1	-156.1	2.00	-2.00	0.00
6,600.0	5.86	69.80	6,479.9	-1,566.93	391.5	1,064.3	-157.7	2.00	-2.00	0.00
6,700.0	3.86	69.80	6,579.6	-1,666.57	394.5	1,072.3	-158.9	2.00	-2.00	0.00
6,800.0	1.86	69.80	6,679.4	-1,766.44	396.2	1,077.0	-159.6	2.00	-2.00	0.00
<b>EOD TO VERTICAL</b>										
<b>6,893.1</b>	<b>0.00</b>	<b>0.00</b>	<b>6,772.5</b>	<b>-1,859.52</b>	<b>396.7</b>	<b>1,078.4</b>	<b>-159.8</b>	<b>2.00</b>	<b>-2.00</b>	<b>0.00</b>
6,900.0	0.00	0.00	6,779.4	-1,866.42	396.7	1,078.4	-159.8	0.00	0.00	0.00
<b>KOP (12°/100ft BUR)</b>										
<b>6,923.1</b>	<b>0.00</b>	<b>0.00</b>	<b>6,802.5</b>	<b>-1,889.52</b>	<b>396.7</b>	<b>1,078.4</b>	<b>-159.8</b>	<b>0.00</b>	<b>0.00</b>	<b>0.00</b>
7,000.0	9.23	179.83	6,879.1	-1,966.09	390.5	1,078.4	-153.8	12.00	12.00	0.00
7,100.0	21.23	179.83	6,975.4	-2,062.40	364.3	1,078.5	-128.1	12.00	12.00	0.00
7,200.0	33.23	179.83	7,064.2	-2,151.16	318.6	1,078.6	-83.5	12.00	12.00	0.00
<b>SHARON SPRINGS</b>										
<b>7,277.1</b>	<b>42.49</b>	<b>179.83</b>	<b>7,125.0</b>	<b>-2,212.00</b>	<b>271.3</b>	<b>1,078.8</b>	<b>-37.2</b>	<b>12.00</b>	<b>12.00</b>	<b>0.00</b>
7,300.0	45.23	179.83	7,141.5	-2,228.48	255.5	1,078.8	-21.7	12.00	12.00	0.00
<b>NIOBRARA</b>										
<b>7,324.1</b>	<b>48.12</b>	<b>179.83</b>	<b>7,158.0</b>	<b>-2,245.00</b>	<b>238.0</b>	<b>1,078.9</b>	<b>-4.6</b>	<b>12.00</b>	<b>12.00</b>	<b>0.00</b>
7,400.0	57.23	179.83	7,204.0	-2,290.98	177.7	1,079.0	54.4	12.00	12.00	0.00
7,500.0	69.23	179.83	7,248.9	-2,335.94	88.5	1,079.3	141.6	12.00	12.00	0.00
7,600.0	81.23	179.83	7,274.4	-2,361.38	-8.0	1,079.6	236.0	12.00	12.00	0.00
<b>7" ICP - BYBEE 1 (P3) - NIO B TARGET</b>										
<b>7,673.1</b>	<b>90.00</b>	<b>179.83</b>	<b>7,280.0</b>	<b>-2,367.00</b>	<b>-80.8</b>	<b>1,079.8</b>	<b>307.1</b>	<b>12.00</b>	<b>12.00</b>	<b>0.00</b>
7,700.0	90.00	179.83	7,280.0	-2,366.96	-107.7	1,079.9	333.5	0.00	0.00	0.00
7,800.0	90.00	179.83	7,280.0	-2,366.96	-207.7	1,080.2	431.3	0.00	0.00	0.00
7,900.0	90.00	179.83	7,280.0	-2,366.96	-307.7	1,080.5	529.1	0.00	0.00	0.00
8,000.0	90.00	179.83	7,280.0	-2,366.96	-407.7	1,080.8	626.9	0.00	0.00	0.00
8,100.0	90.00	179.83	7,280.0	-2,366.96	-507.7	1,081.1	724.7	0.00	0.00	0.00
8,200.0	90.00	179.83	7,280.0	-2,366.96	-607.7	1,081.4	822.5	0.00	0.00	0.00
8,300.0	90.00	179.83	7,280.0	-2,366.96	-707.7	1,081.7	920.3	0.00	0.00	0.00
8,400.0	90.00	179.83	7,280.0	-2,366.96	-807.7	1,082.0	1,018.1	0.00	0.00	0.00



# Planning Report



<b>Database:</b>	EDM 5000.1 Single User Db	<b>Local Co-ordinate Reference:</b>	Well BYBEE 1
<b>Company:</b>	EXTRACTION OIL & GAS	<b>TVD Reference:</b>	KB-EST @ 4913.0usft (Original Well Elev)
<b>Project:</b>	WELD COUNTY, COLORADO (NAD 83)	<b>MD Reference:</b>	KB-EST @ 4913.0usft (Original Well Elev)
<b>Site:</b>	SEC. 14 T2N R68W 6th P.M.	<b>North Reference:</b>	True
<b>Well:</b>	BYBEE 1	<b>Survey Calculation Method:</b>	Minimum Curvature
<b>Wellbore:</b>	ORIGINAL WELLBORE		
<b>Design:</b>	PROPOSAL #3		

Planned Survey										
MD (usft)	Inc (°)	Azi (°)	TVD (usft)	SS (usft)	+N/-S (usft)	+E/-W (usft)	Vertical Section (usft)	Dogleg Rate (°/100usft)	Build Rate (°/100usft)	Turn Rate (°/100usft)
8,500.0	90.00	179.83	7,280.0	-2,366.96	-907.7	1,082.3	1,115.9	0.00	0.00	0.00
8,600.0	90.00	179.83	7,280.0	-2,366.96	-1,007.7	1,082.6	1,213.7	0.00	0.00	0.00
8,700.0	90.00	179.83	7,280.0	-2,366.96	-1,107.7	1,082.9	1,311.5	0.00	0.00	0.00
8,800.0	90.00	179.83	7,280.0	-2,366.96	-1,207.7	1,083.2	1,409.3	0.00	0.00	0.00
8,900.0	90.00	179.83	7,280.0	-2,366.96	-1,307.7	1,083.5	1,507.1	0.00	0.00	0.00
9,000.0	90.00	179.83	7,280.0	-2,366.96	-1,407.7	1,083.8	1,604.9	0.00	0.00	0.00
9,100.0	90.00	179.83	7,280.0	-2,366.96	-1,507.7	1,084.1	1,702.7	0.00	0.00	0.00
9,200.0	90.00	179.83	7,280.0	-2,366.96	-1,607.7	1,084.3	1,800.5	0.00	0.00	0.00
9,300.0	90.00	179.83	7,280.0	-2,366.96	-1,707.7	1,084.6	1,898.3	0.00	0.00	0.00
9,400.0	90.00	179.83	7,280.0	-2,366.96	-1,807.7	1,084.9	1,996.1	0.00	0.00	0.00
9,500.0	90.00	179.83	7,280.0	-2,366.96	-1,907.7	1,085.2	2,093.9	0.00	0.00	0.00
9,600.0	90.00	179.83	7,280.0	-2,366.96	-2,007.7	1,085.5	2,191.7	0.00	0.00	0.00
9,700.0	90.00	179.83	7,280.0	-2,366.96	-2,107.7	1,085.8	2,289.6	0.00	0.00	0.00
9,800.0	90.00	179.83	7,280.0	-2,366.96	-2,207.7	1,086.1	2,387.4	0.00	0.00	0.00
9,900.0	90.00	179.83	7,280.0	-2,366.96	-2,307.7	1,086.4	2,485.2	0.00	0.00	0.00
10,000.0	90.00	179.83	7,280.0	-2,366.96	-2,407.7	1,086.7	2,583.0	0.00	0.00	0.00
10,100.0	90.00	179.83	7,280.0	-2,366.96	-2,507.7	1,087.0	2,680.8	0.00	0.00	0.00
10,200.0	90.00	179.83	7,280.0	-2,366.96	-2,607.7	1,087.3	2,778.6	0.00	0.00	0.00
10,300.0	90.00	179.83	7,280.0	-2,366.96	-2,707.7	1,087.6	2,876.4	0.00	0.00	0.00
10,400.0	90.00	179.83	7,280.0	-2,366.96	-2,807.7	1,087.9	2,974.2	0.00	0.00	0.00
10,500.0	90.00	179.83	7,280.0	-2,366.96	-2,907.7	1,088.2	3,072.0	0.00	0.00	0.00
10,600.0	90.00	179.83	7,280.0	-2,366.96	-3,007.7	1,088.5	3,169.8	0.00	0.00	0.00
10,700.0	90.00	179.83	7,280.0	-2,366.96	-3,107.7	1,088.8	3,267.6	0.00	0.00	0.00
10,800.0	90.00	179.83	7,280.0	-2,366.96	-3,207.7	1,089.1	3,365.4	0.00	0.00	0.00
10,900.0	90.00	179.83	7,280.0	-2,366.96	-3,307.7	1,089.4	3,463.2	0.00	0.00	0.00
11,000.0	90.00	179.83	7,280.0	-2,366.96	-3,407.7	1,089.7	3,561.0	0.00	0.00	0.00
11,100.0	90.00	179.83	7,280.0	-2,366.96	-3,507.7	1,090.0	3,658.8	0.00	0.00	0.00
11,200.0	90.00	179.83	7,280.0	-2,366.96	-3,607.7	1,090.3	3,756.6	0.00	0.00	0.00
11,300.0	90.00	179.83	7,280.0	-2,366.96	-3,707.7	1,090.6	3,854.4	0.00	0.00	0.00
11,400.0	90.00	179.83	7,280.0	-2,366.96	-3,807.7	1,090.9	3,952.2	0.00	0.00	0.00
11,500.0	90.00	179.83	7,280.0	-2,366.96	-3,907.7	1,091.2	4,050.0	0.00	0.00	0.00
11,600.0	90.00	179.83	7,280.0	-2,366.96	-4,007.7	1,091.5	4,147.8	0.00	0.00	0.00
11,700.0	90.00	179.83	7,280.0	-2,366.96	-4,107.7	1,091.8	4,245.6	0.00	0.00	0.00
11,800.0	90.00	179.83	7,280.0	-2,366.96	-4,207.7	1,092.1	4,343.4	0.00	0.00	0.00
11,900.0	90.00	179.83	7,280.0	-2,366.96	-4,307.7	1,092.4	4,441.2	0.00	0.00	0.00
12,000.0	90.00	179.83	7,280.0	-2,366.96	-4,407.7	1,092.7	4,539.0	0.00	0.00	0.00
12,100.0	90.00	179.83	7,280.0	-2,366.96	-4,507.7	1,093.0	4,636.8	0.00	0.00	0.00
12,200.0	90.00	179.83	7,280.0	-2,366.96	-4,607.7	1,093.2	4,734.6	0.00	0.00	0.00
12,300.0	90.00	179.83	7,280.0	-2,366.96	-4,707.7	1,093.5	4,832.4	0.00	0.00	0.00
12,400.0	90.00	179.83	7,280.0	-2,366.96	-4,807.7	1,093.8	4,930.2	0.00	0.00	0.00
12,500.0	90.00	179.83	7,280.0	-2,366.96	-4,907.7	1,094.1	5,028.0	0.00	0.00	0.00
12,600.0	90.00	179.83	7,280.0	-2,366.96	-5,007.7	1,094.4	5,125.9	0.00	0.00	0.00
<b>BHL - BYBEE 1 (P3)</b>										
<b>12,654.5</b>	<b>90.00</b>	<b>179.83</b>	<b>7,280.0</b>	<b>-2,366.96</b>	<b>-5,062.2</b>	<b>1,094.6</b>	<b>5,179.2</b>	<b>0.00</b>	<b>0.00</b>	<b>0.00</b>

<b>Database:</b>	EDM 5000.1 Single User Db	<b>Local Co-ordinate Reference:</b>	Well BYBEE 1
<b>Company:</b>	EXTRACTION OIL & GAS	<b>TVD Reference:</b>	KB-EST @ 4913.0usft (Original Well Elev)
<b>Project:</b>	WELD COUNTY, COLORADO (NAD 83)	<b>MD Reference:</b>	KB-EST @ 4913.0usft (Original Well Elev)
<b>Site:</b>	SEC. 14 T2N R68W 6th P.M.	<b>North Reference:</b>	True
<b>Well:</b>	BYBEE 1	<b>Survey Calculation Method:</b>	Minimum Curvature
<b>Wellbore:</b>	ORIGINAL WELLBORE		
<b>Design:</b>	PROPOSAL #3		

Formations					
MD (usft)	TVD (usft)	Name	Lithology	Dip (°)	Dip Direction (°)
3,620.2	3,567.0	PARKMAN		0.00	
4,457.9	4,385.0	SUSSEX		0.00	
5,027.4	4,941.0	SHANNON		0.00	
7,277.1	7,125.0	SHARON SPRINGS		0.00	
7,324.1	7,158.0	NIOBRARA		0.00	
7,673.1	7,280.0	NIO B TARGET		0.00	

Plan Annotations				
MD (usft)	TVD (usft)	Local Coordinates		Comment
		+N/-S (usft)	+E/-W (usft)	
950.0	950.0	0.0	0.0	START NUDGE (2°/100ft BUR)
1,573.4	1,568.5	23.3	63.4	EOB TO 12.47° INC
6,269.7	6,154.0	373.4	1,015.0	END OF TANGENT
6,893.1	6,772.5	396.7	1,078.4	EOD TO VERTICAL
6,923.1	6,802.5	396.7	1,078.4	KOP (12°/100ft BUR)
7,673.1	7,280.0	-80.8	1,079.8	7" ICP - BYBEE 1 (P3)
12,654.5	7,280.0	-5,062.2	1,094.6	BHL - BYBEE 1 (P3)