

WELL LOCATION CERTIFICATE: BYBEE 1

SECTION 14, TOWNSHIP 2 NORTH, RANGE 68 WEST, 6TH P.M.

NW COR. SEC. 14
3/4" ALUM. CAP
PLS 29430

N 89°59'07" E 2620.24'

S 89°56'19" E 2617.37'

NE COR. SEC. 14
3/4" ALUM. CAP
PLS 33642

N 1/4 COR. SEC. 14
2 1/2" ALUM. CAP
PLS 38304

NOTES:
BH LOCATION PROVIDED BY CLIENT.
LAND SURFACE USE-RANGELAND
SEE ATTACHED MAP FOR ADDITIONAL
IMPROVEMENTS WITHIN 500'.

PDOP= 1.7
GPS OPERATOR: BEN HARDENBERGH

14

W 1/4 COR. SEC. 14
3/4" ALUM. CAP
PLS 29430

SURFACE LOCATION
GROUND ELEVATION= 4889'
NAD83
LATITUDE= 40.137661°
LONGITUDE= 104.964872°

LANDING POINT LOCATION
NAD83
LATITUDE= 40.137439°
LONGITUDE= 104.961010°

BOTTOM HOLE LOCATION
NAD83
LATITUDE= 40.123765°
LONGITUDE= 104.960958°

S 1/4 COR. SEC. 14
2 1/2" ALUM. CAP
ILLEGIBLE

SW COR. SEC. 14
3/4" ALUM. CAP
PLS 29430

S 89°48'43" W 2594.72'
(BASIS OF BEARINGS) SEE NOTE 2

S 89°44'53" W 2649.67'

SE COR. SEC. 14
2 1/2" ALUM. CAP
PLS 29415

E 1/4 COR. SEC. 14
2 1/2" ALUM. CAP
PLS 13482

LP- 2188' FSL
0' FEL

BH- 2500' FSL
0' FEL

WELL BYBEE 1 TO BE LOCATED 2267' FSL AND 1080' FEL

LEGEND

- ⊕ = EXISTING MONUMENT
- = CALCULATED POSITION
- = PROPOSED WELL
- ◆ = EXISTING WELL
- ⬆ = BOTTOM HOLE
- ▲ = LANDING POINT
- LP = LANDING POINT
- BH = BOTTOM HOLE

NOTES:

- THIS FIELD SURVEY CONFORMS TO THE MINIMUM STANDARDS SET BY THE C.O.G.C.C., RULE NO. 215
- BEARINGS AND DISTANCE SHOWN HEREON ARE GRID AND BASED ON THE COLORADO STATE PLANE COORDINATE SYSTEM, NAD 83/2011 BETWEEN MONUMENTS AS LABELED HEREON AND ELEVATIONS SHOWN ARE NAVD 88, AS DERIVED BY GPS OBSERVATIONS.
- GRID DISTANCES ARE SHOWN, AS MEASURED IN THE FIELD, WITH TIES TO WELLS MEASURED PERPENDICULAR TO SECTION LINES.

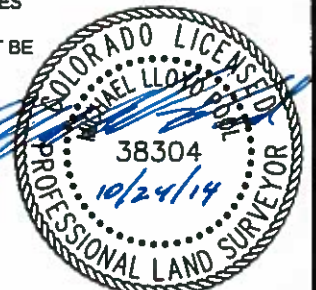
SHEET 1 OF 2

I, MICHAEL L. POOL, A LICENSED PROFESSIONAL LAND SURVEYOR IN THE STATE OF COLORADO DO HEREBY CERTIFY TO EXTRACTION OIL & GAS, THAT THE SURVEY AND WELL LOCATION CERTIFICATE SHOWN HEREON WERE DONE BY ME OR UNDER MY DIRECT SUPERVISION AND THAT THE DRAWING SHOWN HEREON ACCURATELY DEPICTS THE PROPOSED LOCATION OF THE WELL. THIS CERTIFICATE DOES NOT REPRESENT A LAND SURVEY PLAT OR IMPROVEMENT SURVEY PLAT AS DEFINED BY C.R.S. 38-51-102 AND CANNOT BE RELIED UPON TO DETERMINE OWNERSHIP.

MICHAEL L. POOL, PLS 38304
COLORADO LICENSED PROFESSIONAL LAND SURVEYOR
FOR AND ON BEHALF OF P.F.S., LLC



SCALE: 1"=1000'

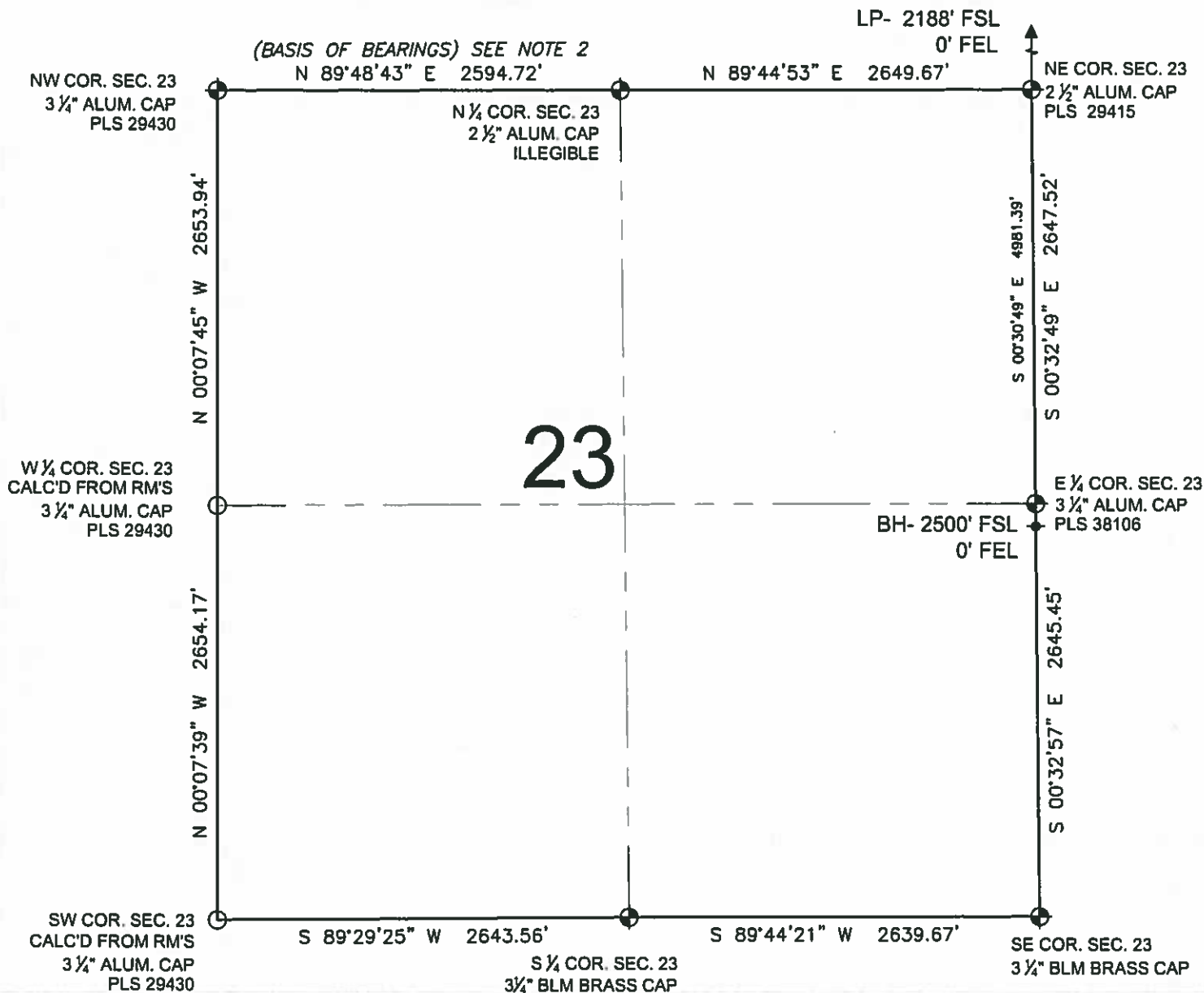


PREPARED BY:	FIELD DATE: 07-17-14	SURFACE LOCATION:
	DRAWING DATE: 10-21-14	NE 1/4 SE 1/4, SEC. 14, T2N, R68W, 6TH P.M.
BY: SWW	CHECKED: MDCA	WELD COUNTY, COLORADO

NOTICE: ACCORDING TO COLORADO LAW YOU MUST COMMENCE ANY LEGAL ACTION BASED UPON ANY DEFECT IN THIS SURVEY WITHIN THREE YEARS AFTER YOU FIRST DISCOVER SUCH DEFECT. IN NO EVENT MAY ANY ACTION BASED UPON ANY DEFECT IN THIS SURVEY BE COMMENCED MORE THAN TEN YEARS FROM THIS SAID DATE OF THIS CERTIFICATION SHOWN HEREON.

WELL LOCATION CERTIFICATE: BYBEE 1

SECTION 23, TOWNSHIP 2 NORTH, RANGE 68 WEST, 6TH P.M.



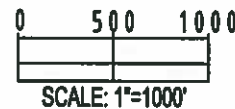
LEGEND

- ⊕ = EXISTING MONUMENT
- ⬤ = CALCULATED POSITION
- ⬤ = PROPOSED WELL
- ⬤ = EXISTING WELL
- ⬤ = BOTTOM HOLE
- ⬤ = LANDING POINT
- LP = LANDING POINT
- BH = BOTTOM HOLE

NOTES:

- THIS FIELD SURVEY CONFORMS TO THE MINIMUM STANDARDS SET BY THE C.O.G.C.C., RULE NO. 215
- BEARINGS AND DISTANCE SHOWN HEREON ARE GRID AND BASED ON THE COLORADO STATE PLANE COORDINATE SYSTEM, NAD 83/2011 BETWEEN MONUMENTS AS LABELED HEREON AND ELEVATIONS SHOWN ARE NAVD 88, AS DERIVED BY GPS OBSERVATIONS.
- GRID DISTANCES ARE SHOWN, AS MEASURED IN THE FIELD, WITH TIES TO WELLS MEASURED PERPENDICULAR TO SECTION LINES.

SHEET 2 OF 2



MICHAEL L. POOL, PLS 38304
COLORADO LICENSED PROFESSIONAL LAND SURVEYOR
FOR AND ON BEHALF OF P.F.S., LLC

PREPARED BY: PFS Petroleum Field Services, LLC 7536 Hilltop Circle Denver, CO 80221	FIELD DATE: 07-17-14 DRAWING DATE: 10-21-14 BY: SWW CHECKED: MDCA	SURFACE LOCATION: NE 1/4 SE 1/4, SEC. 14, T2N, R68W, 6TH P.M. WELD COUNTY, COLORADO
--	--	--

NOTICE: ACCORDING TO COLORADO LAW YOU MUST COMMENCE ANY LEGAL ACTION BASED UPON ANY DEFECT IN THIS SURVEY WITHIN THREE YEARS AFTER YOU FIRST DISCOVER SUCH DEFECT. IN NO EVENT MAY ANY ACTION BASED UPON ANY DEFECT IN THIS SURVEY BE COMMENCED MORE THAN TEN YEARS FROM THIS SAID DATE OF THIS CERTIFICATION SHOWN HEREON.