

EXTRACTION OIL & GAS

WELD COUNTY, COLORADO (NAD 83)

SEC. 14 T2N R68W 6th P.M.

BYBEE 2

ORIGINAL WELLBORE

17 March, 2015

Plan: PROPOSAL #3

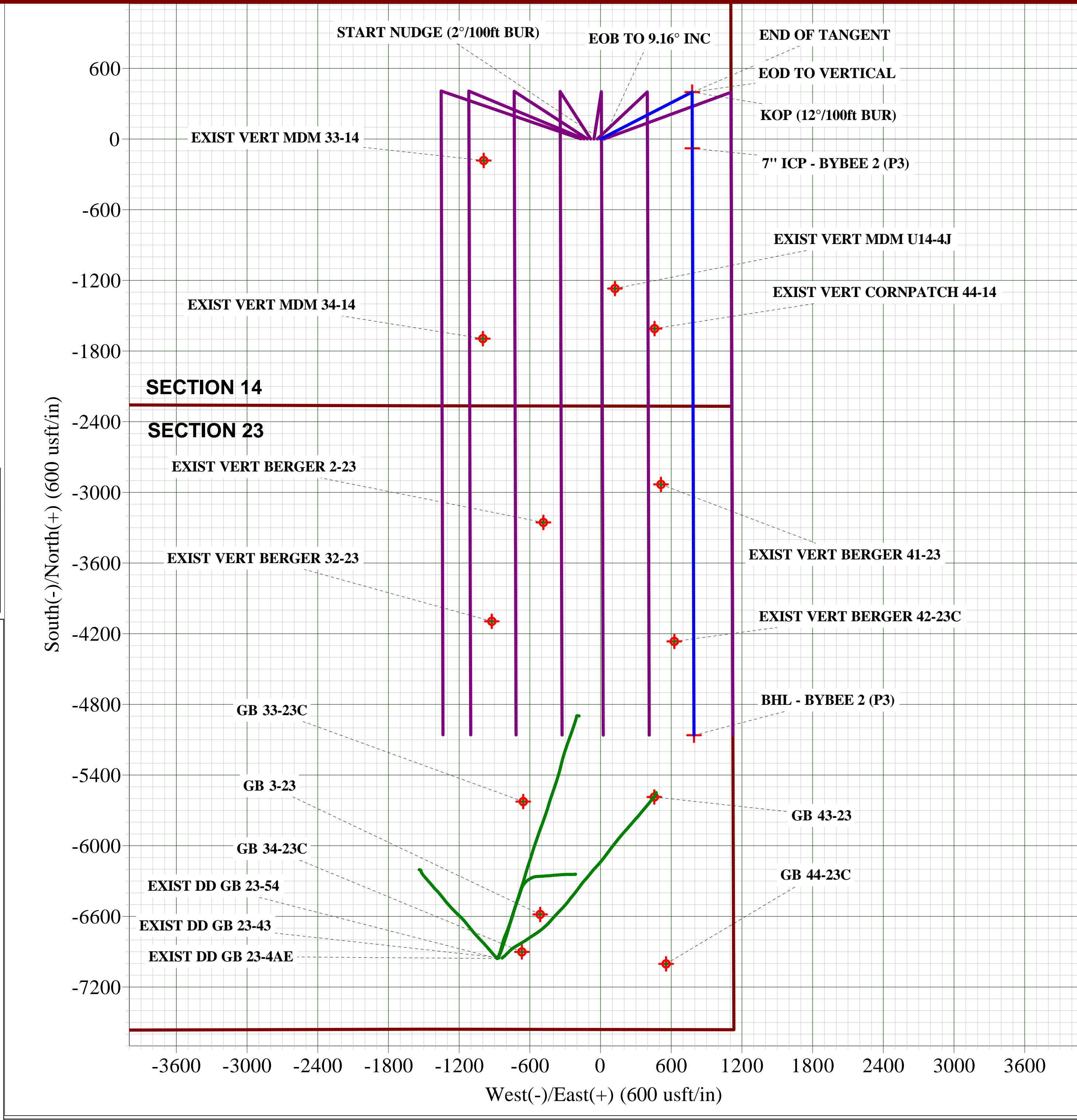
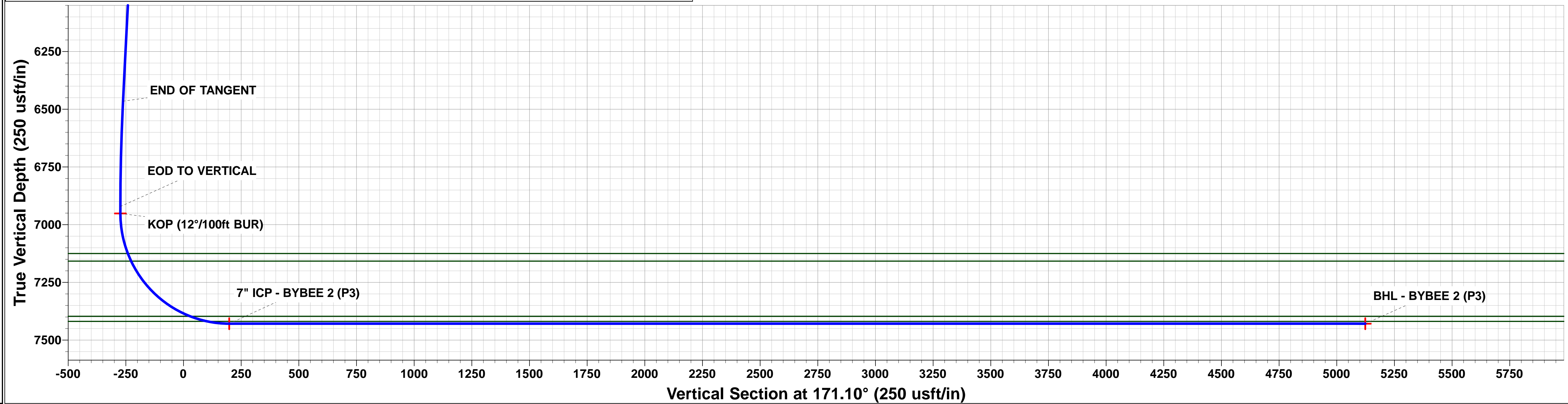
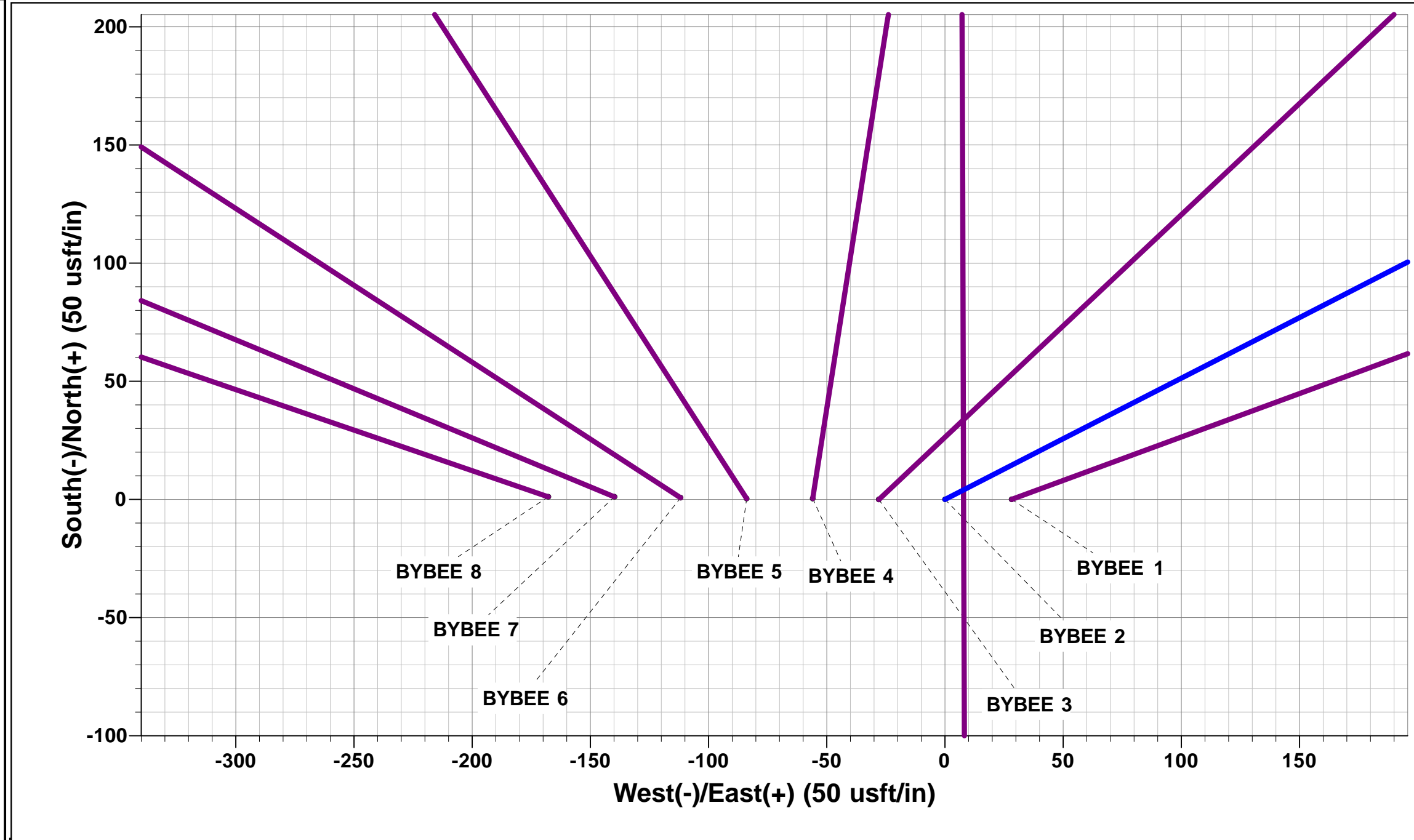
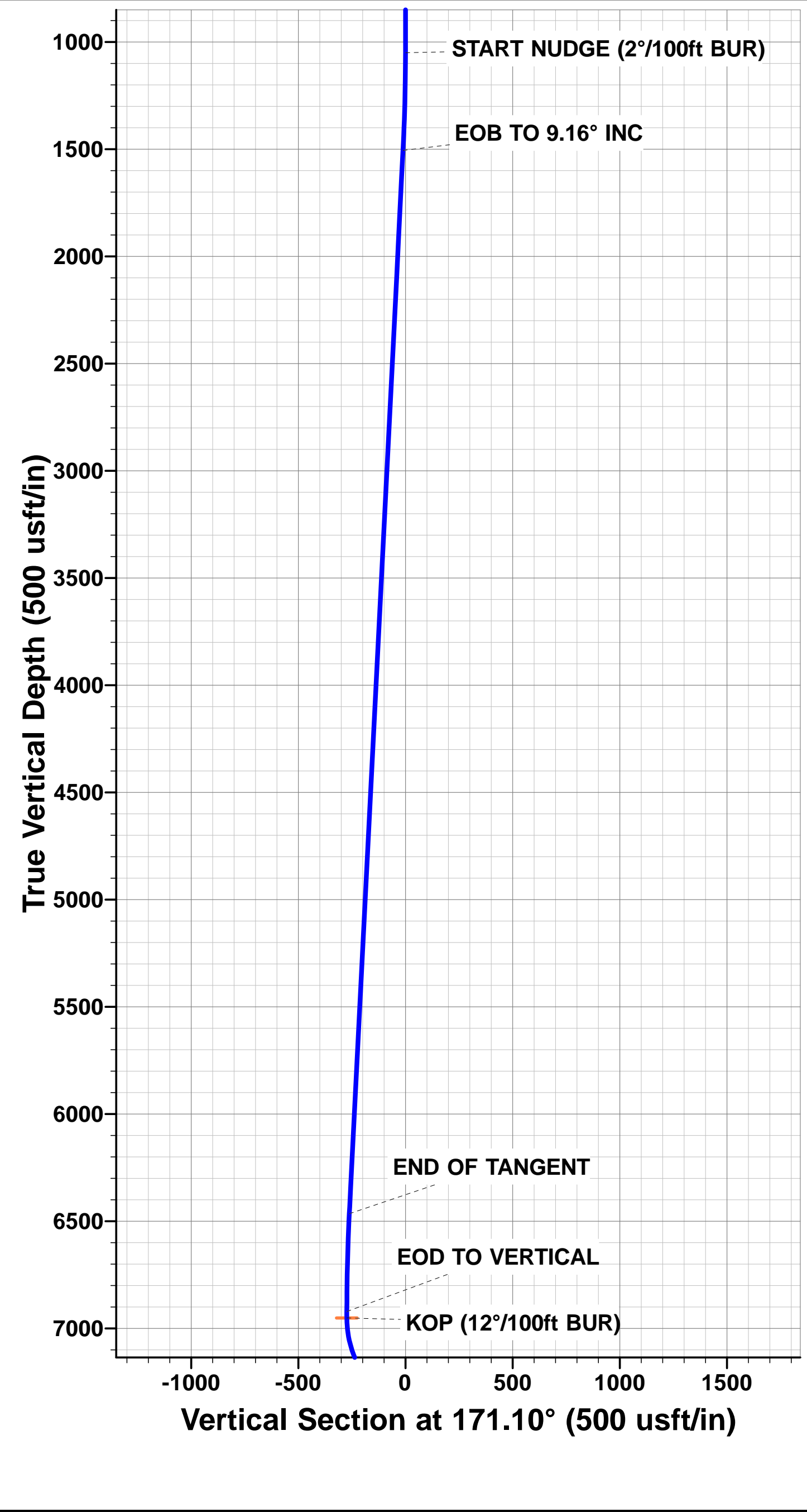




Project: WELD COUNTY, COLORADO (NAD 83)
Site: SEC. 14 T2N R68W 6th P.M.
Well: BYBEE 2
Wellbore: ORIGNAL WELLBORE
Design: PROPOSAL #3

ANNOTATIONS									FORMATION TOP DETAILS		
TVD	MD	Inc	Azi	+N/-S	+E/-W	VSect	Dep	Annotation	TVDPath	MDPath	Formation
1050.0	1050.0	0.00	0.00	0.0	0.0	0.0	0.0	START NUDGE (2°/100ft BUR)	3567.0	3595.6	PARKMAN
1506.2	1508.1	9.16	62.84	16.7	32.5	-11.5	36.5	EOB TO 9.16° INC	4385.0	4424.2	SUSSEX
6465.4	6531.4	9.16	62.84	381.8	744.2	-262.1	836.4	END OF TANGENT	4941.0	4987.3	SHANNON
6921.5	6989.5	0.00	0.00	398.5	776.7	-273.5	873.0	EOD TO VERTICAL	7125.0	7197.1	SHARON SPRINGS
6951.5	7019.5	0.00	0.00	398.5	776.7	-273.5	873.0	KOP (12°/100ft BUR)	7158.0	7233.0	NIOBRARA
7429.0	7769.6	90.00	179.83	-79.0	778.1	198.5	1350.5	7" ICP - BYBEE 2 (P3)	7397.0	7593.7	FT HAYS
7429.0	12752.4	90.00	179.83	-5061.8	792.8	5123.5	6333.3	BHL - BYBEE 2 (P3)	7419.0	7671.7	CODELL

WELLBORE TARGET DETAILS (LAT/LONG)					
Name	TVD	+N/-S	+E/-W	Latitude	Longitude
KOP - BYBEE 2 (P3)	6951.5	398.5	776.7	40.138755	-104.962195
7" ICP - BYBEE 2 (P3)	7429.0	-79.0	778.1	40.137444	-104.962190
BHL - BYBEE 2 (P3)	7429.0	-5061.8	792.8	40.123766	-104.962138



Planning Report



Database:	EDM 5000.1 Single User Db	Local Co-ordinate Reference:	Well BYBEE 2
Company:	EXTRACTION OIL & GAS	TVD Reference:	KB-EST @ 4913.0usft (Original Well Elev)
Project:	WELD COUNTY, COLORADO (NAD 83)	MD Reference:	KB-EST @ 4913.0usft (Original Well Elev)
Site:	SEC. 14 T2N R68W 6th P.M.	North Reference:	True
Well:	BYBEE 2	Survey Calculation Method:	Minimum Curvature
Wellbore:	ORIGINAL WELLBORE		
Design:	PROPOSAL #3		

Project	WELD COUNTY, COLORADO (NAD 83)		
Map System:	US State Plane 1983	System Datum:	Mean Sea Level
Geo Datum:	North American Datum 1983		
Map Zone:	Colorado Northern Zone		Using geodetic scale factor

Site	SEC. 14 T2N R68W 6th P.M.		
Site Position:		Northing:	1,293,444.96 usft
From:	Lat/Long	Easting:	3,149,614.50 usft
Position Uncertainty:	0.0 usft	Slot Radius:	1.10000ft
		Latitude:	40.137661
		Longitude:	-104.964872
		Grid Convergence:	0.35 °

Well	BYBEE 2		
Well Position	+N/-S	0.0 usft	Northing: 1,293,444.78 usfi
	+E/-W	-28.2 usft	Easting: 3,149,586.26 usfi
Position Uncertainty	0.0 usft	Wellhead Elevation:	usfi
		Latitude:	40.137661
		Longitude:	-104.964973
		Ground Level:	4,889.0 usft

Wellbore	ORIGINAL WELLBORE				
Magnetics	Model Name	Sample Date	Declination (°)	Dip Angle (°)	Field Strength (nT)
	IGRF2010	15/10/2014	8.50	66.69	52,621

Design	PROPOSAL #3			
Audit Notes:				
Version:	Phase:	PROTOTYPE	Tie On Depth:	0.0
Vertical Section:	Depth From (TVD) (usft)	+N/-S (usft)	+E/-W (usft)	Direction (°)
	0.0	0.0	0.0	171.10

Plan Sections											
MD (usft)	Inc (°)	Azi (°)	Vertical Depth	SS (usft)	+N/-S (usft)	+E/-W (usft)	Dogleg Rate (°/100usf)	Build Rate (°/100usf)	Turn Rate (°/100usf)	TFO (°)	Target
0.0	0.00	0.00	0.0	-4,913.0	0.0	0.0	0.00	0.00	0.00	0.00	
1,050.0	0.00	0.00	1,050.0	-3,863.0	0.0	0.0	0.00	0.00	0.00	0.00	
1,508.1	9.16	62.84	1,506.2	-3,406.8	16.7	32.5	2.00	2.00	0.00	62.84	
6,531.4	9.16	62.84	6,465.3	1,552.3	381.8	744.2	0.00	0.00	0.00	0.00	
6,989.5	0.00	0.00	6,921.5	2,008.5	398.5	776.7	2.00	-2.00	0.00	180.00	
7,019.5	0.00	0.00	6,951.5	2,038.5	398.5	776.7	0.00	0.00	0.00	0.00	KOP - BYBEE 2 (P
7,769.6	90.00	179.83	7,429.0	2,516.0	-79.0	778.1	12.00	12.00	23.97	179.83	7" ICP - BYBEE 2 (
12,752.4	90.00	179.83	7,429.0	2,516.0	-5,061.8	792.8	0.00	0.00	0.00	146.36	BHL - BYBEE 2 (P

Planning Report



Database:	EDM 5000.1 Single User Db	Local Co-ordinate Reference:	Well BYBEE 2
Company:	EXTRACTION OIL & GAS	TVD Reference:	KB-EST @ 4913.0usft (Original Well Elev)
Project:	WELD COUNTY, COLORADO (NAD 83)	MD Reference:	KB-EST @ 4913.0usft (Original Well Elev)
Site:	SEC. 14 T2N R68W 6th P.M.	North Reference:	True
Well:	BYBEE 2	Survey Calculation Method:	Minimum Curvature
Wellbore:	ORIGINAL WELLBORE		
Design:	PROPOSAL #3		

Planned Survey

MD (usft)	Inc (°)	Azi (°)	TVD (usft)	SS (usft)	+N/-S (usft)	+E/-W (usft)	Vertical Section (usft)	Dogleg Rate (°/100usft)	Build Rate (°/100usft)	Turn Rate (°/100usft)
0.0	0.00	0.00	0.0	4,913.00	0.0	0.0	0.0	0.00	0.00	0.00
100.0	0.00	0.00	100.0	4,813.00	0.0	0.0	0.0	0.00	0.00	0.00
200.0	0.00	0.00	200.0	4,713.00	0.0	0.0	0.0	0.00	0.00	0.00
300.0	0.00	0.00	300.0	4,613.00	0.0	0.0	0.0	0.00	0.00	0.00
400.0	0.00	0.00	400.0	4,513.00	0.0	0.0	0.0	0.00	0.00	0.00
500.0	0.00	0.00	500.0	4,413.00	0.0	0.0	0.0	0.00	0.00	0.00
600.0	0.00	0.00	600.0	4,313.00	0.0	0.0	0.0	0.00	0.00	0.00
700.0	0.00	0.00	700.0	4,213.00	0.0	0.0	0.0	0.00	0.00	0.00
800.0	0.00	0.00	800.0	4,113.00	0.0	0.0	0.0	0.00	0.00	0.00
900.0	0.00	0.00	900.0	4,013.00	0.0	0.0	0.0	0.00	0.00	0.00
1,000.0	0.00	0.00	1,000.0	3,913.00	0.0	0.0	0.0	0.00	0.00	0.00
START NUDGE (2°/100ft BUR)										
1,050.0	0.00	0.00	1,050.0	3,863.00	0.0	0.0	0.0	0.00	0.00	0.00
1,100.0	1.00	62.84	1,100.0	3,813.00	0.2	0.4	-0.1	2.00	2.00	0.00
1,200.0	3.00	62.84	1,199.9	3,713.07	1.8	3.5	-1.2	2.00	2.00	0.00
1,300.0	5.00	62.84	1,299.7	3,613.32	5.0	9.7	-3.4	2.00	2.00	0.00
1,400.0	7.00	62.84	1,399.1	3,513.87	9.7	19.0	-6.7	2.00	2.00	0.00
1,500.0	9.00	62.84	1,498.2	3,414.85	16.1	31.4	-11.1	2.00	2.00	0.00
EOB TO 9.16° INC										
1,508.1	9.16	62.84	1,506.2	3,406.85	16.7	32.5	-11.5	2.00	2.00	0.00
1,600.0	9.16	62.84	1,596.9	3,316.12	23.4	45.5	-16.0	0.00	0.00	0.00
1,700.0	9.16	62.84	1,695.6	3,217.40	30.6	59.7	-21.0	0.00	0.00	0.00
1,800.0	9.16	62.84	1,794.3	3,118.67	37.9	73.9	-26.0	0.00	0.00	0.00
1,900.0	9.16	62.84	1,893.1	3,019.95	45.2	88.0	-31.0	0.00	0.00	0.00
2,000.0	9.16	62.84	1,991.8	2,921.23	52.4	102.2	-36.0	0.00	0.00	0.00
2,100.0	9.16	62.84	2,090.5	2,822.50	59.7	116.4	-41.0	0.00	0.00	0.00
2,200.0	9.16	62.84	2,189.2	2,723.78	67.0	130.5	-46.0	0.00	0.00	0.00
2,300.0	9.16	62.84	2,287.9	2,625.05	74.2	144.7	-51.0	0.00	0.00	0.00
2,400.0	9.16	62.84	2,386.7	2,526.33	81.5	158.9	-55.9	0.00	0.00	0.00
2,500.0	9.16	62.84	2,485.4	2,427.61	88.8	173.0	-60.9	0.00	0.00	0.00
2,600.0	9.16	62.84	2,584.1	2,328.88	96.1	187.2	-65.9	0.00	0.00	0.00
2,700.0	9.16	62.84	2,682.8	2,230.16	103.3	201.4	-70.9	0.00	0.00	0.00
2,800.0	9.16	62.84	2,781.6	2,131.43	110.6	215.5	-75.9	0.00	0.00	0.00
2,900.0	9.16	62.84	2,880.3	2,032.71	117.9	229.7	-80.9	0.00	0.00	0.00
3,000.0	9.16	62.84	2,979.0	1,933.98	125.1	243.9	-85.9	0.00	0.00	0.00
3,100.0	9.16	62.84	3,077.7	1,835.26	132.4	258.0	-90.9	0.00	0.00	0.00
3,200.0	9.16	62.84	3,176.5	1,736.54	139.7	272.2	-95.9	0.00	0.00	0.00
3,300.0	9.16	62.84	3,275.2	1,637.81	146.9	286.4	-100.8	0.00	0.00	0.00
3,400.0	9.16	62.84	3,373.9	1,539.09	154.2	300.5	-105.8	0.00	0.00	0.00
3,500.0	9.16	62.84	3,472.6	1,440.36	161.5	314.7	-110.8	0.00	0.00	0.00
PARKMAN										
3,595.6	9.16	62.84	3,567.0	1,346.00	168.4	328.3	-115.6	0.00	0.00	0.00
3,600.0	9.16	62.84	3,571.4	1,341.64	168.7	328.9	-115.8	0.00	0.00	0.00
3,700.0	9.16	62.84	3,670.1	1,242.92	176.0	343.1	-120.8	0.00	0.00	0.00
3,800.0	9.16	62.84	3,768.8	1,144.19	183.3	357.2	-125.8	0.00	0.00	0.00
3,900.0	9.16	62.84	3,867.5	1,045.47	190.5	371.4	-130.8	0.00	0.00	0.00
4,000.0	9.16	62.84	3,966.3	946.74	197.8	385.6	-135.8	0.00	0.00	0.00
4,100.0	9.16	62.84	4,065.0	848.02	205.1	399.7	-140.8	0.00	0.00	0.00
4,200.0	9.16	62.84	4,163.7	749.30	212.4	413.9	-145.8	0.00	0.00	0.00
4,300.0	9.16	62.84	4,262.4	650.57	219.6	428.1	-150.7	0.00	0.00	0.00
4,400.0	9.16	62.84	4,361.2	551.85	226.9	442.2	-155.7	0.00	0.00	0.00
SUSSEX										
4,424.2	9.16	62.84	4,385.0	528.00	228.6	445.6	-156.9	0.00	0.00	0.00
4,500.0	9.16	62.84	4,459.9	453.12	234.2	456.4	-160.7	0.00	0.00	0.00

Database:	EDM 5000.1 Single User Db	Local Co-ordinate Reference:	Well BYBEE 2
Company:	EXTRACTION OIL & GAS	TVD Reference:	KB-EST @ 4913.0usft (Original Well Elev)
Project:	WELD COUNTY, COLORADO (NAD 83)	MD Reference:	KB-EST @ 4913.0usft (Original Well Elev)
Site:	SEC. 14 T2N R68W 6th P.M.	North Reference:	True
Well:	BYBEE 2	Survey Calculation Method:	Minimum Curvature
Wellbore:	ORIGINAL WELLBORE		
Design:	PROPOSAL #3		

Planned Survey

MD (usft)	Inc (°)	Azi (°)	TVD (usft)	SS (usft)	+N/-S (usft)	+E/-W (usft)	Vertical Section (usft)	Dogleg Rate (°/100usft)	Build Rate (°/100usft)	Turn Rate (°/100usft)
4,600.0	9.16	62.84	4,558.6	354.40	241.4	470.6	-165.7	0.00	0.00	0.00
4,700.0	9.16	62.84	4,657.3	255.67	248.7	484.7	-170.7	0.00	0.00	0.00
4,800.0	9.16	62.84	4,756.0	156.95	256.0	498.9	-175.7	0.00	0.00	0.00
4,900.0	9.16	62.84	4,854.8	58.23	263.2	513.1	-180.7	0.00	0.00	0.00
SHANNON										
4,987.3	9.16	62.84	4,941.0	-28.00	269.6	525.4	-185.0	0.00	0.00	0.00
5,000.0	9.16	62.84	4,953.5	-40.50	270.5	527.2	-185.7	0.00	0.00	0.00
5,100.0	9.16	62.84	5,052.2	-139.22	277.8	541.4	-190.7	0.00	0.00	0.00
5,200.0	9.16	62.84	5,150.9	-237.95	285.0	555.6	-195.6	0.00	0.00	0.00
5,300.0	9.16	62.84	5,249.7	-336.67	292.3	569.7	-200.6	0.00	0.00	0.00
5,400.0	9.16	62.84	5,348.4	-435.39	299.6	583.9	-205.6	0.00	0.00	0.00
5,500.0	9.16	62.84	5,447.1	-534.12	306.8	598.1	-210.6	0.00	0.00	0.00
5,600.0	9.16	62.84	5,545.8	-632.84	314.1	612.2	-215.6	0.00	0.00	0.00
5,700.0	9.16	62.84	5,644.6	-731.57	321.4	626.4	-220.6	0.00	0.00	0.00
5,800.0	9.16	62.84	5,743.3	-830.29	328.7	640.6	-225.6	0.00	0.00	0.00
5,900.0	9.16	62.84	5,842.0	-929.01	335.9	654.7	-230.6	0.00	0.00	0.00
6,000.0	9.16	62.84	5,940.7	-1,027.74	343.2	668.9	-235.6	0.00	0.00	0.00
6,100.0	9.16	62.84	6,039.5	-1,126.46	350.5	683.1	-240.5	0.00	0.00	0.00
6,200.0	9.16	62.84	6,138.2	-1,225.19	357.7	697.2	-245.5	0.00	0.00	0.00
6,300.0	9.16	62.84	6,236.9	-1,323.91	365.0	711.4	-250.5	0.00	0.00	0.00
6,400.0	9.16	62.84	6,335.6	-1,422.64	372.3	725.6	-255.5	0.00	0.00	0.00
6,500.0	9.16	62.84	6,434.4	-1,521.36	379.5	739.7	-260.5	0.00	0.00	0.00
END OF TANGENT										
6,531.4	9.16	62.84	6,465.4	-1,552.36	381.8	744.2	-262.1	0.00	0.00	0.00
6,600.0	7.79	62.84	6,533.2	-1,620.21	386.4	753.2	-265.2	2.00	-2.00	0.00
6,700.0	5.79	62.84	6,632.5	-1,719.50	391.8	763.7	-268.9	2.00	-2.00	0.00
6,800.0	3.79	62.84	6,732.1	-1,819.15	395.6	771.1	-271.6	2.00	-2.00	0.00
6,900.0	1.79	62.84	6,832.0	-1,919.02	397.9	775.5	-273.1	2.00	-2.00	0.00
EOD TO VERTICAL										
6,989.5	0.00	0.00	6,921.5	-2,008.51	398.5	776.7	-273.5	2.00	-2.00	0.00
7,000.0	0.00	0.00	6,932.0	-2,019.01	398.5	776.7	-273.5	0.00	0.00	0.00
KOP (12°/100ft BUR)										
7,019.5	0.00	0.00	6,951.5	-2,038.51	398.5	776.7	-273.5	0.00	0.00	0.00
7,100.0	9.66	179.83	7,031.6	-2,118.63	391.7	776.7	-266.8	12.00	12.00	0.00
SHARON SPRINGS										
7,197.1	21.31	179.83	7,125.0	-2,212.00	365.9	776.8	-241.3	12.00	12.00	0.00
7,200.0	21.66	179.83	7,127.7	-2,214.74	364.8	776.8	-240.2	12.00	12.00	0.00
NIORARA										
7,233.0	25.62	179.83	7,158.0	-2,245.00	351.5	776.8	-227.1	12.00	12.00	0.00
7,300.0	33.66	179.83	7,216.2	-2,303.15	318.5	776.9	-194.4	12.00	12.00	0.00
7,400.0	45.66	179.83	7,293.0	-2,380.00	254.7	777.1	-131.4	12.00	12.00	0.00
7,500.0	57.66	179.83	7,354.9	-2,441.92	176.5	777.4	-54.0	12.00	12.00	0.00
FT HAYS										
7,593.7	68.90	179.83	7,397.0	-2,484.00	92.9	777.6	28.6	12.00	12.00	0.00
7,600.0	69.66	179.83	7,399.2	-2,486.21	87.0	777.6	34.4	12.00	12.00	0.00
CODELL										
7,671.7	78.25	179.83	7,419.0	-2,506.00	18.2	777.8	102.4	12.00	12.00	0.00
7,700.0	81.66	179.83	7,423.9	-2,510.94	-9.7	777.9	130.0	12.00	12.00	0.00
7" ICP - BYBEE 2 (P3)										
7,769.6	90.00	179.83	7,429.0	-2,516.00	-79.0	778.1	198.5	11.99	11.99	0.00
7,800.0	90.00	179.83	7,429.0	-2,516.00	-109.4	778.2	228.6	0.00	0.00	0.00
7,900.0	90.00	179.83	7,429.0	-2,515.99	-209.4	778.5	327.4	0.00	0.00	0.00
8,000.0	90.00	179.83	7,429.0	-2,515.99	-309.4	778.8	426.2	0.00	0.00	0.00

Planning Report



Database:	EDM 5000.1 Single User Db	Local Co-ordinate Reference:	Well BYBEE 2
Company:	EXTRACTION OIL & GAS	TVD Reference:	KB-EST @ 4913.0usft (Original Well Elev)
Project:	WELD COUNTY, COLORADO (NAD 83)	MD Reference:	KB-EST @ 4913.0usft (Original Well Elev)
Site:	SEC. 14 T2N R68W 6th P.M.	North Reference:	True
Well:	BYBEE 2	Survey Calculation Method:	Minimum Curvature
Wellbore:	ORIGINAL WELLBORE		
Design:	PROPOSAL #3		

Planned Survey

MD (usft)	Inc (°)	Azi (°)	TVD (usft)	SS (usft)	+N/-S (usft)	+E/-W (usft)	Vertical Section (usft)	Dogleg Rate (°/100usft)	Build Rate (°/100usft)	Turn Rate (°/100usft)
8,100.0	90.00	179.83	7,429.0	-2,515.98	-409.4	779.1	525.1	0.00	0.00	0.00
8,200.0	90.00	179.83	7,429.0	-2,515.98	-509.4	779.4	623.9	0.00	0.00	0.00
8,300.0	90.00	179.83	7,429.0	-2,515.97	-609.4	779.7	722.8	0.00	0.00	0.00
8,400.0	90.00	179.83	7,429.0	-2,515.97	-709.4	780.0	821.6	0.00	0.00	0.00
8,500.0	90.00	179.83	7,429.0	-2,515.96	-809.4	780.3	920.4	0.00	0.00	0.00
8,600.0	90.00	179.83	7,429.0	-2,515.96	-909.4	780.6	1,019.3	0.00	0.00	0.00
8,700.0	90.00	179.83	7,429.0	-2,515.95	-1,009.4	780.9	1,118.1	0.00	0.00	0.00
8,800.0	90.00	179.83	7,428.9	-2,515.95	-1,109.4	781.2	1,217.0	0.00	0.00	0.00
8,900.0	90.00	179.83	7,428.9	-2,515.95	-1,209.4	781.5	1,315.8	0.00	0.00	0.00
9,000.0	90.00	179.83	7,428.9	-2,515.94	-1,309.4	781.8	1,414.6	0.00	0.00	0.00
9,100.0	90.00	179.83	7,428.9	-2,515.94	-1,409.4	782.1	1,513.5	0.00	0.00	0.00
9,200.0	90.00	179.83	7,428.9	-2,515.94	-1,509.4	782.4	1,612.3	0.00	0.00	0.00
9,300.0	90.00	179.83	7,428.9	-2,515.93	-1,609.4	782.7	1,711.2	0.00	0.00	0.00
9,400.0	90.00	179.83	7,428.9	-2,515.93	-1,709.4	783.0	1,810.0	0.00	0.00	0.00
9,500.0	90.00	179.83	7,428.9	-2,515.93	-1,809.4	783.3	1,908.9	0.00	0.00	0.00
9,600.0	90.00	179.83	7,428.9	-2,515.93	-1,909.4	783.6	2,007.7	0.00	0.00	0.00
9,700.0	90.00	179.83	7,428.9	-2,515.93	-2,009.4	783.9	2,106.5	0.00	0.00	0.00
9,800.0	90.00	179.83	7,428.9	-2,515.93	-2,109.4	784.2	2,205.4	0.00	0.00	0.00
9,900.0	90.00	179.83	7,428.9	-2,515.92	-2,209.4	784.5	2,304.2	0.00	0.00	0.00
10,000.0	90.00	179.83	7,428.9	-2,515.92	-2,309.4	784.8	2,403.1	0.00	0.00	0.00
10,100.0	90.00	179.83	7,428.9	-2,515.92	-2,409.4	785.1	2,501.9	0.00	0.00	0.00
10,200.0	90.00	179.83	7,428.9	-2,515.92	-2,509.4	785.3	2,600.7	0.00	0.00	0.00
10,300.0	90.00	179.83	7,428.9	-2,515.92	-2,609.4	785.6	2,699.6	0.00	0.00	0.00
10,400.0	90.00	179.83	7,428.9	-2,515.92	-2,709.4	785.9	2,798.4	0.00	0.00	0.00
10,500.0	90.00	179.83	7,428.9	-2,515.92	-2,809.4	786.2	2,897.3	0.00	0.00	0.00
10,600.0	90.00	179.83	7,428.9	-2,515.92	-2,909.4	786.5	2,996.1	0.00	0.00	0.00
10,700.0	90.00	179.83	7,428.9	-2,515.93	-3,009.4	786.8	3,094.9	0.00	0.00	0.00
10,800.0	90.00	179.83	7,428.9	-2,515.93	-3,109.4	787.1	3,193.8	0.00	0.00	0.00
10,900.0	90.00	179.83	7,428.9	-2,515.93	-3,209.4	787.4	3,292.6	0.00	0.00	0.00
11,000.0	90.00	179.83	7,428.9	-2,515.93	-3,309.4	787.7	3,391.5	0.00	0.00	0.00
11,100.0	90.00	179.83	7,428.9	-2,515.93	-3,409.4	788.0	3,490.3	0.00	0.00	0.00
11,200.0	90.00	179.83	7,428.9	-2,515.93	-3,509.4	788.3	3,589.1	0.00	0.00	0.00
11,300.0	90.00	179.83	7,428.9	-2,515.94	-3,609.4	788.6	3,688.0	0.00	0.00	0.00
11,400.0	90.00	179.83	7,428.9	-2,515.94	-3,709.4	788.9	3,786.8	0.00	0.00	0.00
11,500.0	90.00	179.83	7,428.9	-2,515.94	-3,809.4	789.2	3,885.7	0.00	0.00	0.00
11,600.0	90.00	179.83	7,428.9	-2,515.95	-3,909.4	789.5	3,984.5	0.00	0.00	0.00
11,700.0	90.00	179.83	7,428.9	-2,515.95	-4,009.4	789.8	4,083.3	0.00	0.00	0.00
11,800.0	90.00	179.83	7,429.0	-2,515.95	-4,109.4	790.0	4,182.2	0.00	0.00	0.00
11,900.0	90.00	179.83	7,429.0	-2,515.96	-4,209.4	790.3	4,281.0	0.00	0.00	0.00
12,000.0	90.00	179.83	7,429.0	-2,515.96	-4,309.4	790.6	4,379.9	0.00	0.00	0.00
12,100.0	90.00	179.83	7,429.0	-2,515.97	-4,409.4	790.9	4,478.7	0.00	0.00	0.00
12,200.0	90.00	179.83	7,429.0	-2,515.97	-4,509.4	791.2	4,577.5	0.00	0.00	0.00
12,300.0	90.00	179.83	7,429.0	-2,515.97	-4,609.4	791.5	4,676.4	0.00	0.00	0.00
12,400.0	90.00	179.83	7,429.0	-2,515.98	-4,709.4	791.8	4,775.2	0.00	0.00	0.00
12,500.0	90.00	179.83	7,429.0	-2,515.99	-4,809.4	792.1	4,874.1	0.00	0.00	0.00
12,600.0	90.00	179.83	7,429.0	-2,515.99	-4,909.4	792.4	4,972.9	0.00	0.00	0.00
12,700.0	90.00	179.83	7,429.0	-2,516.00	-5,009.4	792.7	5,071.7	0.00	0.00	0.00
BHL - BYBEE 2 (P3)										
12,752.4	90.00	179.83	7,429.0	-2,516.00	-5,061.8	792.8	5,123.5	0.00	0.00	0.00

Database:	EDM 5000.1 Single User Db	Local Co-ordinate Reference:	Well BYBEE 2
Company:	EXTRACTION OIL & GAS	TVD Reference:	KB-EST @ 4913.0usft (Original Well Elev)
Project:	WELD COUNTY, COLORADO (NAD 83)	MD Reference:	KB-EST @ 4913.0usft (Original Well Elev)
Site:	SEC. 14 T2N R68W 6th P.M.	North Reference:	True
Well:	BYBEE 2	Survey Calculation Method:	Minimum Curvature
Wellbore:	ORIGINAL WELLBORE		
Design:	PROPOSAL #3		

Formations					
MD (usft)	TVD (usft)	Name	Lithology	Dip (°)	Dip Direction (°)
3,595.6	3,567.0	PARKMAN		0.00	
4,424.2	4,385.0	SUSSEX		0.00	
4,987.3	4,941.0	SHANNON		0.00	
7,197.1	7,125.0	SHARON SPRINGS		0.00	
7,233.0	7,158.0	NIOBRARA		0.00	
7,593.7	7,397.0	FT HAYS		0.00	
7,671.7	7,419.0	CODELL		0.00	

Plan Annotations				
MD (usft)	TVD (usft)	Local Coordinates		Comment
		+N/-S (usft)	+E/-W (usft)	
1,050.0	1,050.0	0.0	0.0	START NUDGE (2°/100ft BUR)
1,508.1	1,506.2	16.7	32.5	EOB TO 9.16° INC
6,531.4	6,465.4	381.8	744.2	END OF TANGENT
6,989.5	6,921.5	398.5	776.7	EOD TO VERTICAL
7,019.5	6,951.5	398.5	776.7	KOP (12°/100ft BUR)
7,769.6	7,429.0	-79.0	778.1	7" ICP - BYBEE 2 (P3)
12,752.4	7,429.0	-5,061.8	792.8	BHL - BYBEE 2 (P3)