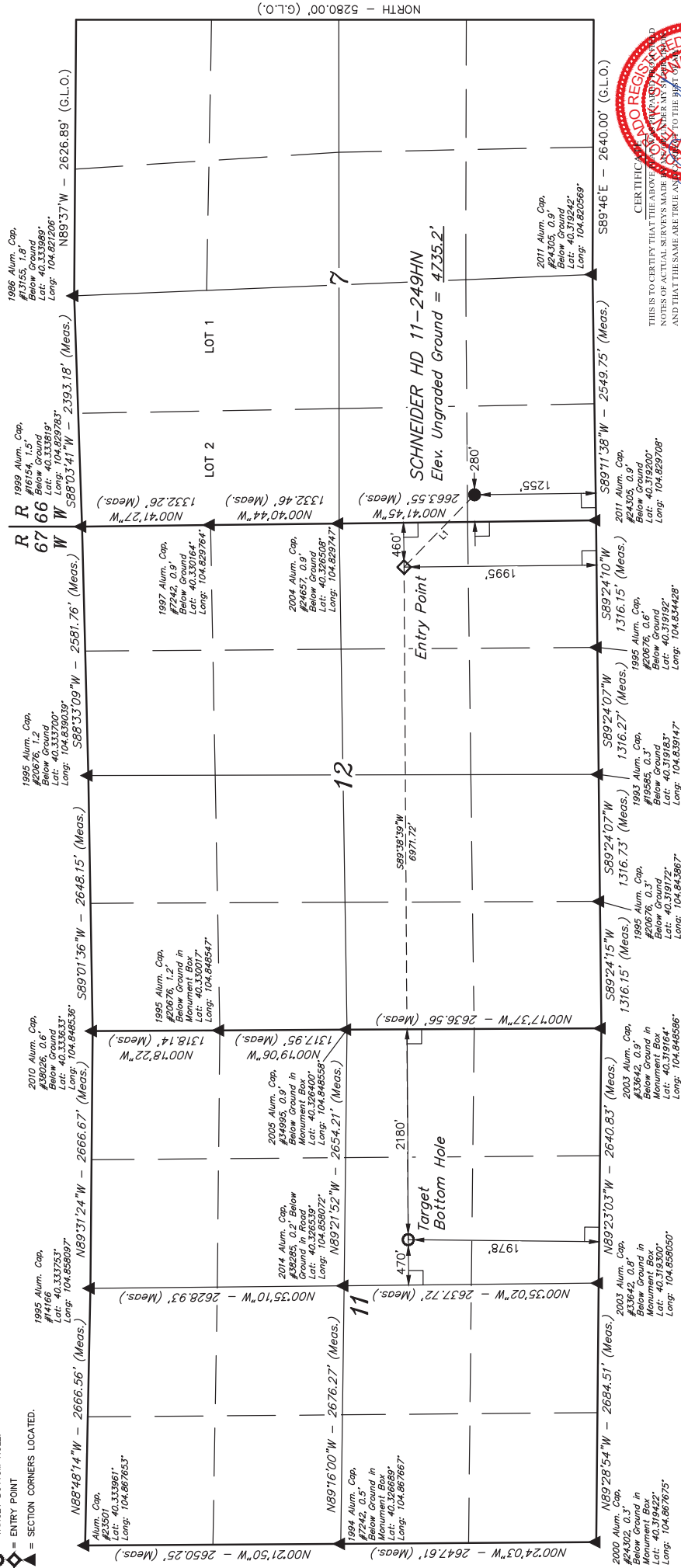


T4N, R66W, 6th P.M.

LEGEND:

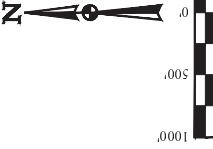
- 90° SYMBOL
- PROPOSED WELLHEAD.
- TARGET BOTTOM HOLE.
- ENTRY POINT
- SECTION CORNERS LOCATED.



CERTIFICADO REGISTRO
THIS IS TO CERTIFY THAT THE ABOVE
NOTES OF ACTUAL SURVEYS MADE
AND THAT THE SAME ARE TRUE AND
KNOWLEDGE AND BELIEF.

REGISTERED LAND SURVEYOR
REAL ESTATE LICENSE NO. 28365
STATE OF COLORADO
JULIAN L. NELSEN

LINE TABLE		
LINE	DIRECTION	LENGTH
L1	N45°41'39"W	1046.49'



BASIS OF BEARINGS
BASIS OF ELEVATION

USGS COOPERATIVE BASE NETWORK CONTROL STATION.
DESIGNATION "VERMILYEA", NGS DATA SHEET LISTS THE
NAVD 88 ELEVATION AS BEING 5026 FEET.

JUNTAH
SURVEYING & LAND SERVICES, INC.
Corporate Office: 85 South 200 East
Vernal, UT 84078 • (435) 789-1017

LINE TABLE		
LINE	DIRECTION	LENGTH
L1	N45°41'39"W	1046.49'

NAD 83 (SURFACE LOCATION)		
LATITUDE	- 40°19'21.53"	(40.322647)
LONGITUDE	- 104°49'45.40"	(104.828722)
NAD 27 (SURFACE LOCATION)		
LATITUDE	- 40°19'21.60"	(40.322667)
LONGITUDE	- 104°49'41.51"	(104.828197)

PDOP = 1.2

GREAT WESTERN OIL & GAS COMPANY
SCHNEIDER HD 11-249HN
SW 1/4 SW 1/4 SECTION 7, T4N, R66W, 6th P.M.
WELD COUNTY, COLORADO
SURVEYED BY: DALLAS NIELSEN, J.S. DATE: 08-18-14
DRAWN BY: J.W. DATE DRAWN: 06-05-14
SCALE: 1" = 1000' REVISED: 10-16-14
WELL LOCATION PLAT