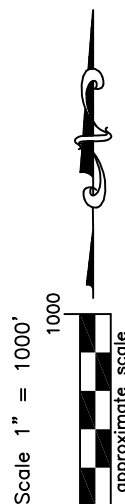
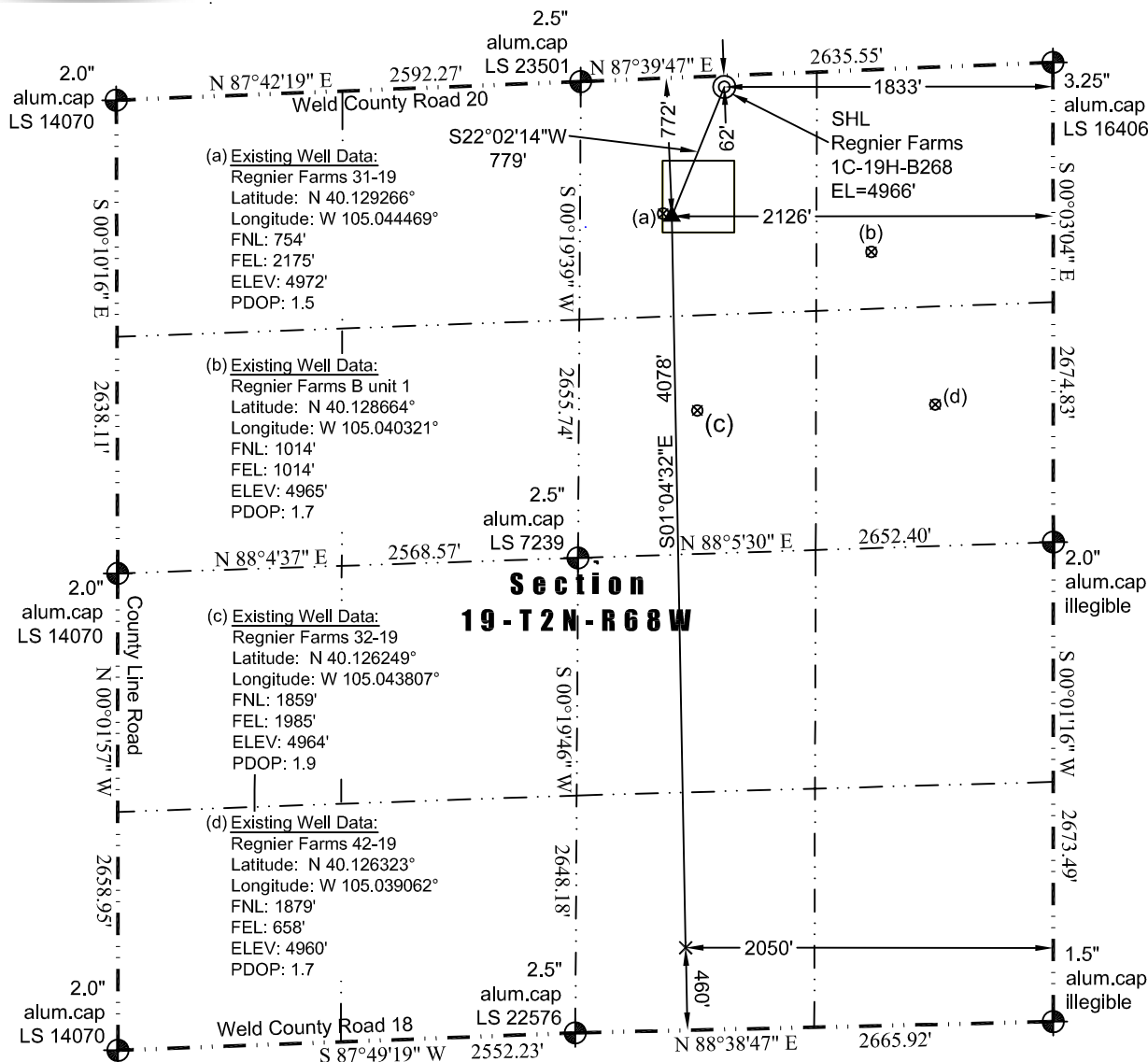




# WELL LOCATION CERTIFICATE

THIS MAP DOES NOT REPRESENT A BOUNDARY SURVEY

Washburn Land Surveying  
www.WashburnSurveying.com  
970-232-9645



In accordance with a request from Jay Knutson of EnCana Oil & Gas (USA) Inc., Washburn Land Surveying, LLC has determined the location of the **Regnier Farms 1C-19H-B268** well site to be SHL: 62' FNL and 1833' FEL, (TPZ: 772' FNL and 2126' FEL), (BHL: 460' FSL and 2050' FEL), as measured at ninety (90) degrees from the section lines of Section 19 Township 2 North, Range 68 West of the 6th Principal Meridian, Weld County Colorado.

## Proposed Well Data:

Latitude: SHL: N 40.131200° (TPZ: N 40.129222°) (BHL: N 40.118027°)  
Longitude: SHL: W 105.043237° (TPZ: W 105.044295°) (BHL: W 105.044096°)  
PDOP: 2.2

## Nearest:

Building: 608' southwest  
Building Unit: 694' southwest  
Public Road: 827' northwest  
Property Line: 62' north  
Existing Well: Regnier Farms 31-19; 784' southwest

Above Ground Utility: 1160' southwest  
Railroad: +5,280'  
Well Window: SHL is 411' outside  
High Occupancy Building Unit: +5,280'

## Notes:

- 1) Bearings and distances based on NAD 83 Colorado North State Plane Coordinate. using RTK GPS observations taken 10/30/14 by operator Chris Bettencourt
- 2) Conversion factor to ground (1.0002769699).
- 3) Elevations based on NAVD 88 GPS heights and Geoid 2009 corrections.
- 4) See Location Drawing for visible improvements within 500 feet of Pad Site.
- 5) The surface use is a cultivated field.

**NOTICE:** According to Colorado law you must commence any legal action based upon any defect in this W.L.C. within three years after you first discover such defect. In no event may any action based upon any defect in this W.L.C. be commenced more than ten years from this said date of the certification shown hereon.

## LEGEND

- ⊗ - Existing Well
- ⊕ - Found Survey Monument
- (c) - Calculated Dimension
- ⊙ - Surface Hole Location (SHL)
- ▲ - Top of Producing Zone (TPZ)
- × - Bottom Hole Location (BHL)

I hereby certify that this Well Location Certificate was prepared by me or under my direct supervision on 3/13/2015 for and on behalf of EnCana Oil & Gas (USA) Inc. That it is not a Land Survey Plat or an Improvement Survey Plat and that it is not to be relied upon for establishment of fences, buildings, or other future improvement lines.

John Robert McGehee LS#38219  
Well: Regnier Farms 1C-19H-B268 WLC