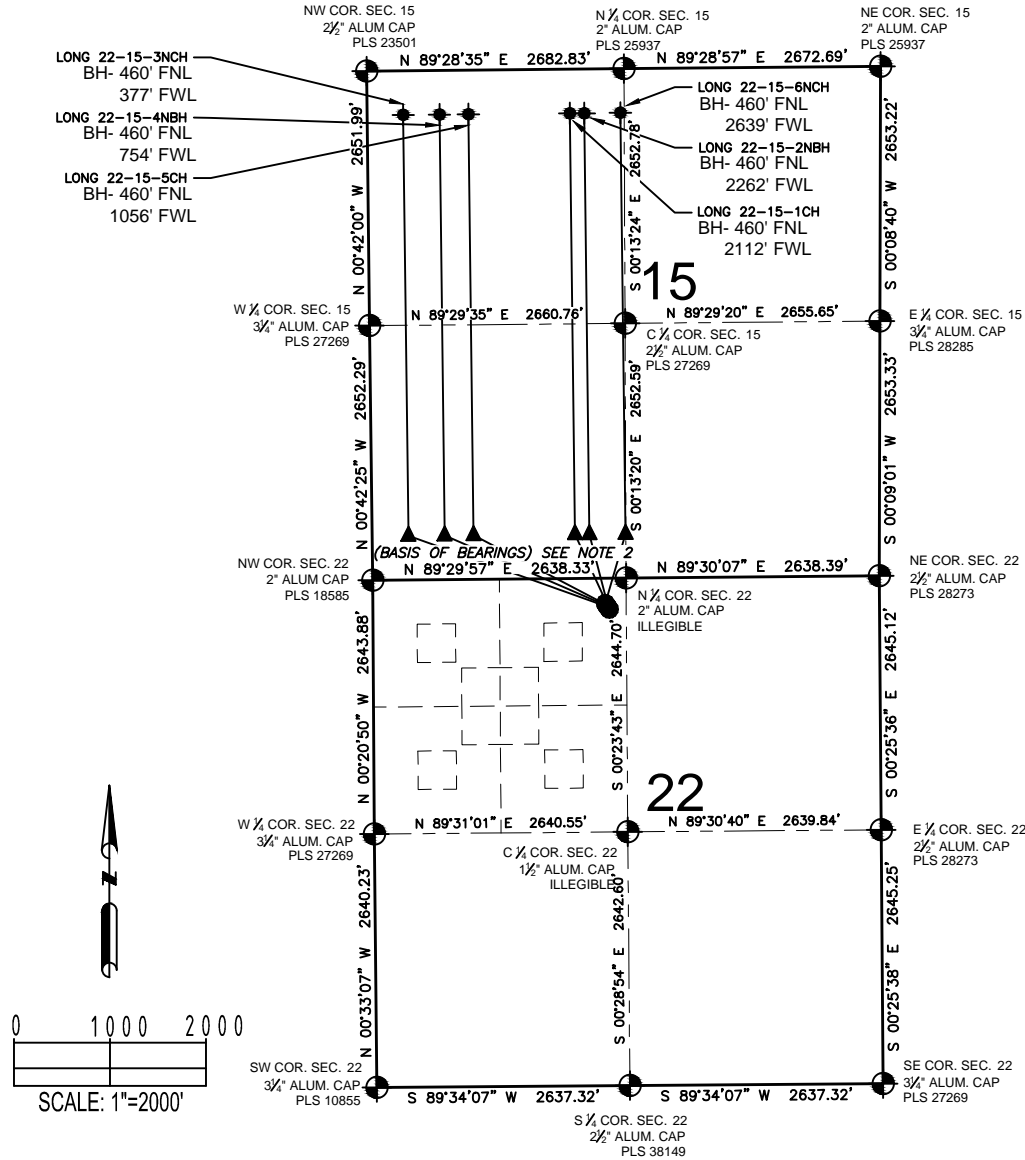


# LONG 22-B PAD MULTI-WELL PLAN



## LEGEND

- = EXISTING MONUMENT
- = CALCULATED POSITION
- = PROPOSED WELL
- ▲ = LANDING POINT
- ◆ = BOTTOM HOLE
- ◆ = EXISTING WELL
- LP = LANDING POINT
- BH = BOTTOM HOLE

## NOTES:

- THIS FIELD SURVEY CONFORMS TO THE MINIMUM STANDARDS SET BY THE C.O.G.C.C., RULE NO. 215
- BEARINGS ARE BASED UPON THE NORTH LINE OF THE NORTHWEST QUARTER OF SECTION 22, TOWNSHIP 1 NORTH, RANGE 65 WEST OF THE 6TH P.M., COUNTY OF WELD, STATE OF COLORADO AS BEARING N89°29'57"E BETWEEN THE MONUMENTS SHOWN HEREON.
- GRID DISTANCES ARE SHOWN, AS GPS MEASURED IN THE FIELD, WITH TIES TO WELLS MEASURED PERPENDICULAR TO SECTION LINES. TO GET GROUND DISTANCES MULTIPLY THE SHOWN DISTANCE BY 1.000270914.

## NOTES:

- LONG 22-15-6NCH TO BE AT 263' FNL, 2420' FWL.
- BOTTOM HOLE AT 460' FNL & 2639' FWL, SEC 15.
- LONG 22-15-5CH TO BE AT 275' FNL, 2429' FWL.
- BOTTOM HOLE AT 460' FNL & 1056' FWL, SEC 15.
- LONG 22-15-4NBH TO BE AT 287' FNL, 2437' FWL.
- BOTTOM HOLE AT 460' FNL & 754' FWL, SEC 15.
- LONG 22-15-3NCH TO BE AT 300' FNL, 2446' FWL.
- BOTTOM HOLE AT 460' FNL & 377' FWL, SEC 15.
- LONG 22-15-2NBH TO BE AT 312' FNL, 2454' FWL.
- BOTTOM HOLE AT 460' FNL & 2262' FWL, SEC 15.
- LONG 22-15-1CH TO BE AT 324' FNL, 2463' FWL.
- BOTTOM HOLE AT 460' FNL & 2112' FWL, SEC 15.

PREPARED BY:



FIELD DATE:  
12-09-14

DRAWING DATE:  
03-18-15

BY:  
KAD

CHECKED BY:  
WDW

SITE NAME:

LONG 22-B PAD

SURFACE LOCATION:

NE 1/4 NW 1/4, SEC. 22, T1N, R65W, 6TH P.M.  
WELD COUNTY, COLORADO

PREPARED FOR:

EDGE  
ENERGY