

EXTRACTION OIL & GAS

WELD COUNTY, COLORADO (NAD 83)

NW SW SEC. 5 T2N R68W 6th P.M.

FAIRVIEW 9

ORIGINAL WELLBORE

22 October, 2014

Plan: PROPOSAL #1

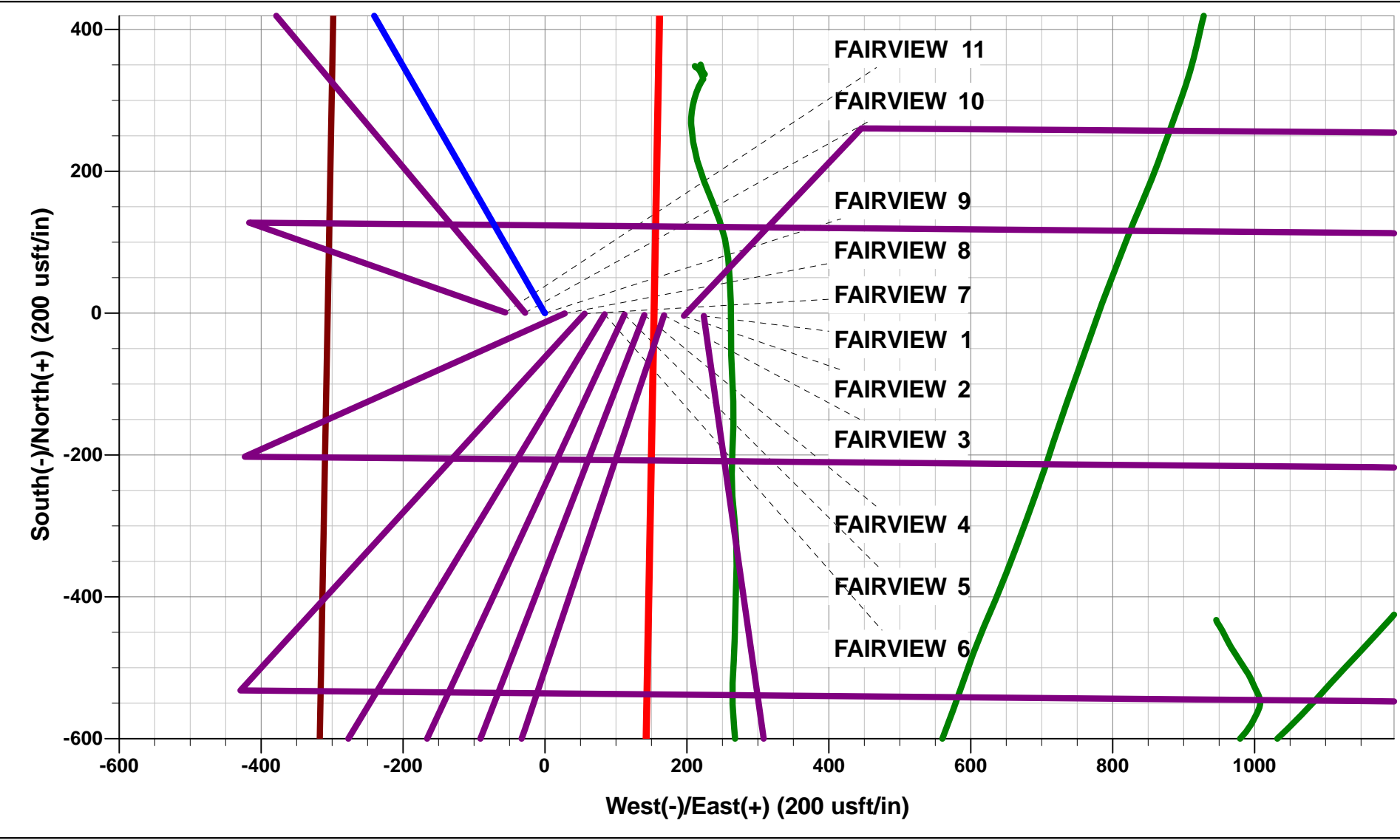




Project: WELD COUNTY, COLORADO (NAD 83)
Site: NW SW SEC. 5 T2N R68W 6th P.M.
Well: FAIRVIEW 9
Wellbore: ORIGINAL WELLBORE
Design: PROPOSAL #1

ANNOTATIONS										
TVD	MD	Inc	Azi	+N/-S	+E/-W	VSect	Dep	Annotation		
1150.0	1150.0	0.00	0.00	0.0	0.0	0.0	0.0	START NUDGE (2°/100ft BUR)		
1621.2	1623.3	9.47	330.17	33.8	-19.4	-16.4	39.0	EOB TO 9.47° INC		
6045.8	6109.1	9.47	330.17	673.9	-386.4	-325.8	776.8	END OF TANGENT		
6517.0	6582.4	0.00	0.00	707.7	-405.8	-342.1	815.8	EOD TO VERTICAL		
6547.0	6612.4	0.00	0.00	707.7	-405.8	-342.1	815.8	KOP (10°/100ft BUR)		
7120.0	7512.4	90.00	90.53	702.4	167.1	228.1	1388.7	7" ICP - FAIRVIEW 9		
7120.0	14576.8	90.00	90.53	637.1	7231.2	7259.2	8453.1	BHL - FAIRVIEW 9		

WELLBORE TARGET DETAILS (LAT/LONG)					
Name	TVD	+N/-S	+E/-W	Latitude	Longitude
KOP - FAIRVIEW 9	6547.0	707.7	-405.8	40.167710	-105.036920
7" ICP - FAIRVIEW 9	7120.0	702.4	167.1	40.167695	-105.034870
BHL - FAIRVIEW 9	7120.0	637.1	7231.2	40.167513	-105.009594



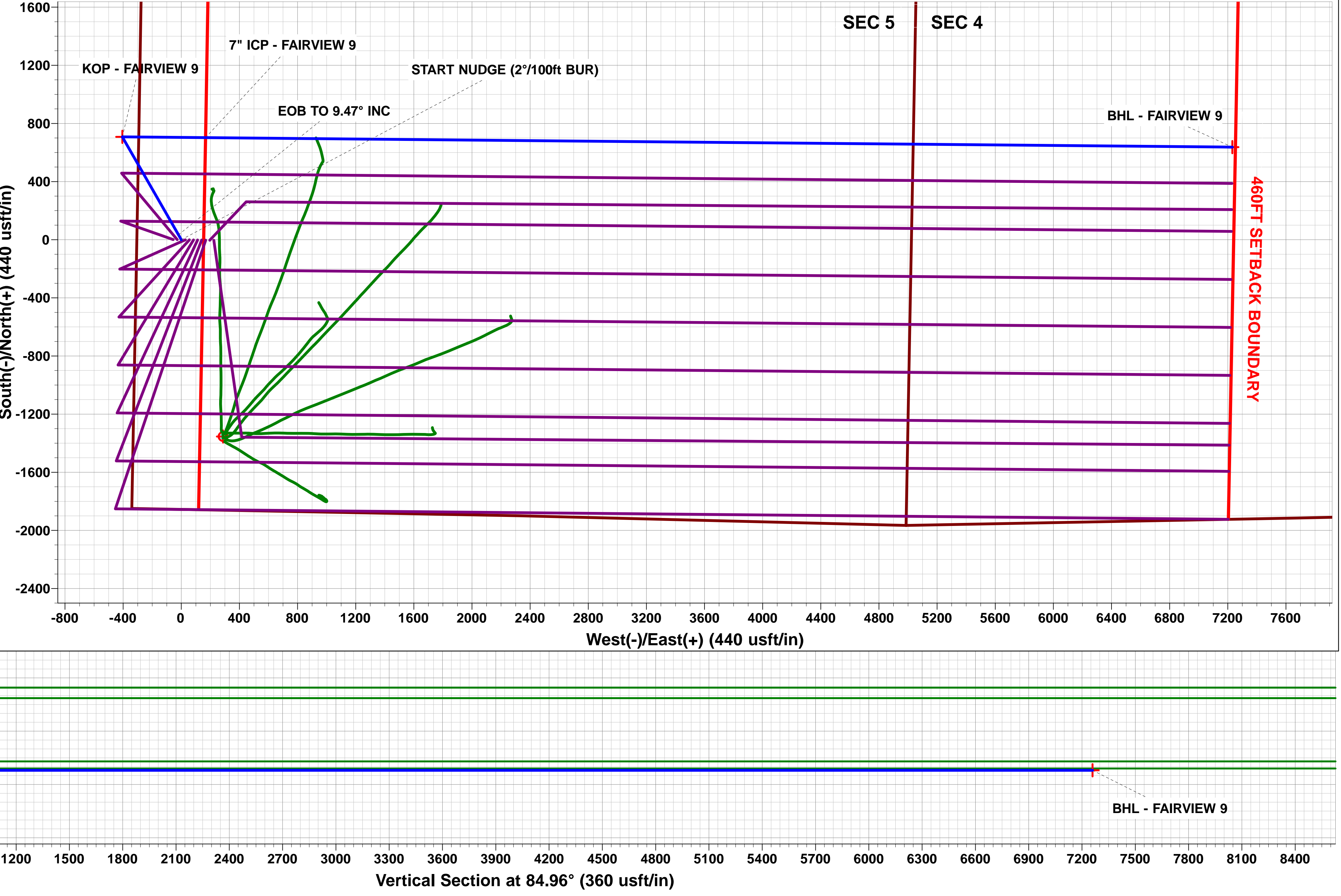
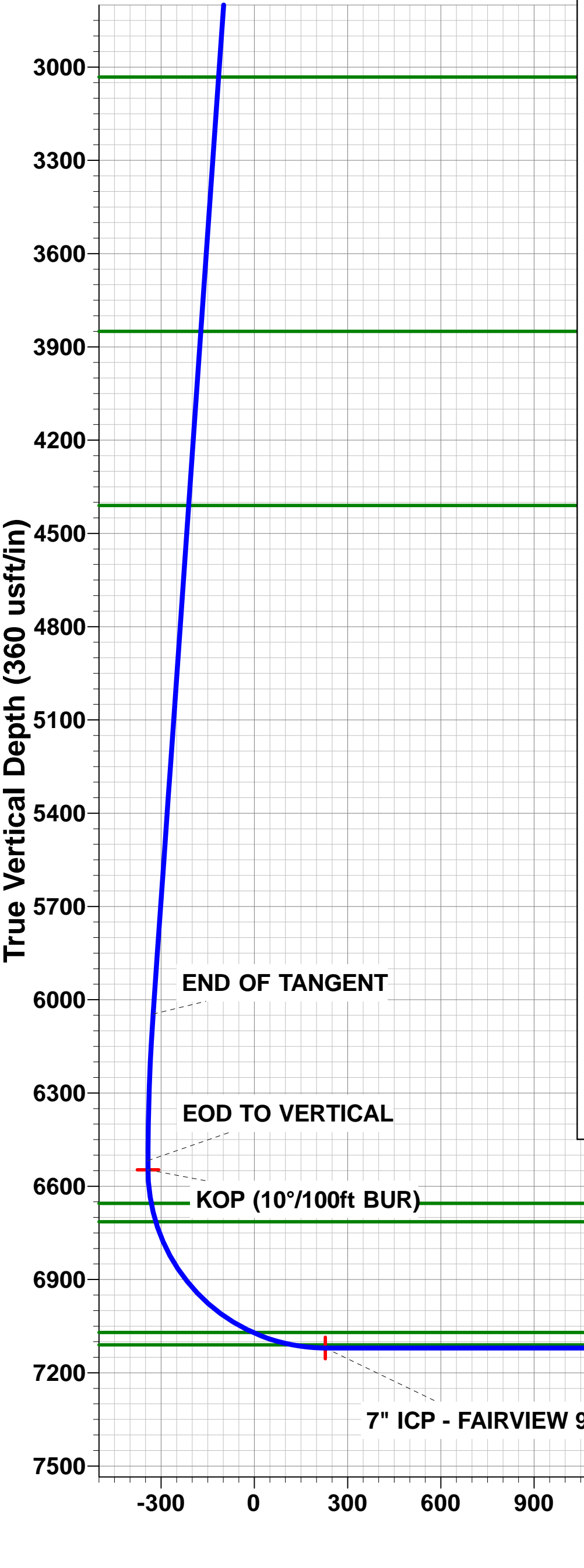
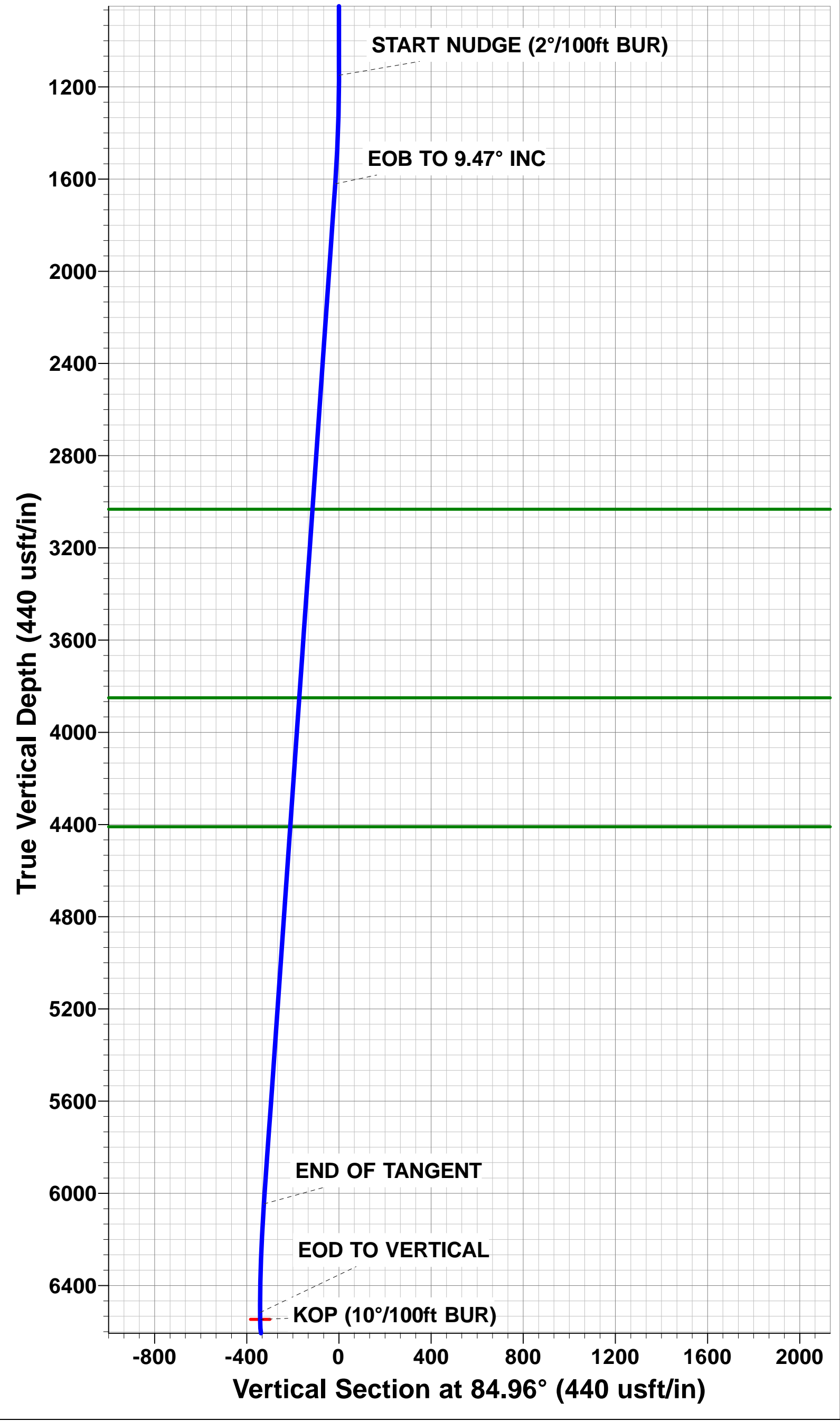
FORMATION TOP DETAILS		
TVDPath	MDPath	Formation
3032.0	3053.6	PARKMAN
3850.0	3882.9	SUSSEX
4410.0	4450.7	SHANNON
6655.0	6721.0	SHARON SPRINGS
6714.0	6781.8	NIOBRARA
7070.0	7271.3	FORT HAYS
7110.0	7405.2	CODELL

T

M

Azimuths to True North
Magnetic North: 8.54°

Magnetic Field
Strength: 52625.5snT
Dip Angle: 66.70°
Date: 22/10/2014
Model: IGRF2010



Planning Report



Database:	EDM 5000.1 Single User Db	Local Co-ordinate Reference:	Well FAIRVIEW 9
Company:	EXTRACTION OIL & GAS	TVD Reference:	KB-EST @ 4971.0usft (Original Well Elev)
Project:	WELD COUNTY, COLORADO (NAD 83)	MD Reference:	KB-EST @ 4971.0usft (Original Well Elev)
Site:	NW SW SEC. 5 T2N R68W 6th P.M.	North Reference:	True
Well:	FAIRVIEW 9	Survey Calculation Method:	Minimum Curvature
Wellbore:	ORIGINAL WELLBORE		
Design:	PROPOSAL #1		

Project	WELD COUNTY, COLORADO (NAD 83)		
Map System:	US State Plane 1983	System Datum:	Mean Sea Level
Geo Datum:	North American Datum 1983		
Map Zone:	Colorado Northern Zone		Using geodetic scale factor

Site	NW SW SEC. 5 T2N R68W 6th P.M.		
Site Position:		Northing:	1,303,569.20 usft
From:	Lat/Long	Easting:	3,130,047.26 usft
Position Uncertainty:	0.0 usft	Slot Radius:	1.10000ft
		Latitude:	40.165756
		Longitude:	-105.034667
		Grid Convergence:	0.30 °

Well	FAIRVIEW 9		
Well Position	+N/-S	4.0 usft	Northing:
	+E/-W	-223.9 usft	Easting:
Position Uncertainty	0.0 usft		Wellhead Elevation:
			Latitude:
			Longitude:
			Ground Level:

Wellbore	ORIGINAL WELLBORE				
Magnetics	Model Name	Sample Date	Declination (°)	Dip Angle (°)	Field Strength (nT)
	IGRF2010	22/10/2014	8.54	66.70	52,625

Design	PROPOSAL #1			
Audit Notes:				
Version:	Phase:	PROTOTYPE	Tie On Depth:	0.0
Vertical Section:	Depth From (TVD) (usft)	+N/-S (usft)	+E/-W (usft)	Direction (°)
	7,120.0	0.0	0.0	84.96

Plan Sections											
MD (usft)	Inc (°)	Azi (°)	Vertical Depth	SS (usft)	+N/-S (usft)	+E/-W (usft)	Dogleg Rate (°/100usft)	Build Rate (°/100usft)	Turn Rate (°/100usft)	TFO (°)	Target
0.0	0.00	0.00	0.0	-4,971.0	0.0	0.0	0.00	0.00	0.00	0.00	
1,150.0	0.00	0.00	1,150.0	-3,821.0	0.0	0.0	0.00	0.00	0.00	0.00	
1,623.3	9.47	330.17	1,621.2	-3,349.8	33.8	-19.4	2.00	2.00	0.00	330.17	
6,109.1	9.47	330.17	6,045.8	1,074.8	673.9	-386.4	0.00	0.00	0.00	0.00	
6,582.4	0.00	0.00	6,517.0	1,546.0	707.7	-405.8	2.00	-2.00	0.00	180.00	
6,612.4	0.00	0.00	6,547.0	1,576.0	707.7	-405.8	0.00	0.00	0.00	0.00	KOP - FAIRVIEW 9
7,512.4	90.00	90.53	7,120.0	2,149.0	702.4	167.1	10.00	10.00	10.06	90.53	7" ICP - FAIRVIEW
14,576.8	90.00	90.53	7,120.0	2,149.0	637.1	7,231.2	0.00	0.00	0.00	-36.18	BHL - FAIRVIEW 9

Planning Report



Database:	EDM 5000.1 Single User Db	Local Co-ordinate Reference:	Well FAIRVIEW 9
Company:	EXTRACTION OIL & GAS	TVD Reference:	KB-EST @ 4971.0usft (Original Well Elev)
Project:	WELD COUNTY, COLORADO (NAD 83)	MD Reference:	KB-EST @ 4971.0usft (Original Well Elev)
Site:	NW SW SEC. 5 T2N R68W 6th P.M.	North Reference:	True
Well:	FAIRVIEW 9	Survey Calculation Method:	Minimum Curvature
Wellbore:	ORIGINAL WELLBORE		
Design:	PROPOSAL #1		

Planned Survey

MD (usft)	Inc (°)	Azi (°)	TVD (usft)	SS (usft)	+N/-S (usft)	+E/-W (usft)	Vertical Section (usft)	Dogleg Rate (°/100usft)	Build Rate (°/100usft)	Turn Rate (°/100usft)
0.0	0.00	0.00	0.0	4,971.00	0.0	0.0	0.0	0.00	0.00	0.00
100.0	0.00	0.00	100.0	4,871.00	0.0	0.0	0.0	0.00	0.00	0.00
200.0	0.00	0.00	200.0	4,771.00	0.0	0.0	0.0	0.00	0.00	0.00
300.0	0.00	0.00	300.0	4,671.00	0.0	0.0	0.0	0.00	0.00	0.00
400.0	0.00	0.00	400.0	4,571.00	0.0	0.0	0.0	0.00	0.00	0.00
500.0	0.00	0.00	500.0	4,471.00	0.0	0.0	0.0	0.00	0.00	0.00
600.0	0.00	0.00	600.0	4,371.00	0.0	0.0	0.0	0.00	0.00	0.00
700.0	0.00	0.00	700.0	4,271.00	0.0	0.0	0.0	0.00	0.00	0.00
800.0	0.00	0.00	800.0	4,171.00	0.0	0.0	0.0	0.00	0.00	0.00
900.0	0.00	0.00	900.0	4,071.00	0.0	0.0	0.0	0.00	0.00	0.00
1,000.0	0.00	0.00	1,000.0	3,971.00	0.0	0.0	0.0	0.00	0.00	0.00
1,100.0	0.00	0.00	1,100.0	3,871.00	0.0	0.0	0.0	0.00	0.00	0.00
START NUDGE (2°/100ft BUR)										
1,150.0	0.00	0.00	1,150.0	3,821.00	0.0	0.0	0.0	0.00	0.00	0.00
1,200.0	1.00	330.17	1,200.0	3,771.00	0.4	-0.2	-0.2	2.00	2.00	0.00
1,300.0	3.00	330.17	1,299.9	3,671.07	3.4	-2.0	-1.6	2.00	2.00	0.00
1,400.0	5.00	330.17	1,399.7	3,571.32	9.5	-5.4	-4.6	2.00	2.00	0.00
1,500.0	7.00	330.17	1,499.1	3,471.87	18.5	-10.6	-9.0	2.00	2.00	0.00
1,600.0	9.00	330.17	1,598.2	3,372.85	30.6	-17.5	-14.8	2.00	2.00	0.00
EOB TO 9.47° INC										
1,623.3	9.47	330.17	1,621.2	3,349.83	33.8	-19.4	-16.4	2.00	2.00	0.00
1,700.0	9.47	330.17	1,696.8	3,274.19	44.8	-25.7	-21.6	0.00	0.00	0.00
1,800.0	9.47	330.17	1,795.4	3,175.56	59.1	-33.9	-28.5	0.00	0.00	0.00
1,900.0	9.47	330.17	1,894.1	3,076.92	73.3	-42.0	-35.4	0.00	0.00	0.00
2,000.0	9.47	330.17	1,992.7	2,978.28	87.6	-50.2	-42.3	0.00	0.00	0.00
2,100.0	9.47	330.17	2,091.4	2,879.64	101.9	-58.4	-49.2	0.00	0.00	0.00
2,200.0	9.47	330.17	2,190.0	2,781.00	116.1	-66.6	-56.1	0.00	0.00	0.00
2,300.0	9.47	330.17	2,288.6	2,682.37	130.4	-74.8	-63.0	0.00	0.00	0.00
2,400.0	9.47	330.17	2,387.3	2,583.73	144.7	-82.9	-69.9	0.00	0.00	0.00
2,500.0	9.47	330.17	2,485.9	2,485.09	158.9	-91.1	-76.8	0.00	0.00	0.00
2,600.0	9.47	330.17	2,584.5	2,386.45	173.2	-99.3	-83.7	0.00	0.00	0.00
2,700.0	9.47	330.17	2,683.2	2,287.81	187.5	-107.5	-90.6	0.00	0.00	0.00
2,800.0	9.47	330.17	2,781.8	2,189.17	201.7	-115.7	-97.5	0.00	0.00	0.00
2,900.0	9.47	330.17	2,880.5	2,090.54	216.0	-123.9	-104.4	0.00	0.00	0.00
3,000.0	9.47	330.17	2,979.1	1,991.90	230.3	-132.0	-111.3	0.00	0.00	0.00
PARKMAN										
3,053.6	9.47	330.17	3,032.0	1,939.00	237.9	-136.4	-115.0	0.00	0.00	0.00
3,100.0	9.47	330.17	3,077.7	1,893.26	244.5	-140.2	-118.2	0.00	0.00	0.00
3,200.0	9.47	330.17	3,176.4	1,794.62	258.8	-148.4	-125.1	0.00	0.00	0.00
3,300.0	9.47	330.17	3,275.0	1,695.98	273.1	-156.6	-132.0	0.00	0.00	0.00
3,400.0	9.47	330.17	3,373.7	1,597.34	287.3	-164.8	-138.9	0.00	0.00	0.00
3,500.0	9.47	330.17	3,472.3	1,498.71	301.6	-172.9	-145.8	0.00	0.00	0.00
3,600.0	9.47	330.17	3,570.9	1,400.07	315.9	-181.1	-152.7	0.00	0.00	0.00
3,700.0	9.47	330.17	3,669.6	1,301.43	330.1	-189.3	-159.6	0.00	0.00	0.00
3,800.0	9.47	330.17	3,768.2	1,202.79	344.4	-197.5	-166.5	0.00	0.00	0.00
SUSSEX										
3,882.9	9.47	330.17	3,850.0	1,121.00	356.2	-204.3	-172.2	0.00	0.00	0.00
3,900.0	9.47	330.17	3,866.8	1,104.15	358.7	-205.7	-173.4	0.00	0.00	0.00
4,000.0	9.47	330.17	3,965.5	1,005.52	372.9	-213.8	-180.3	0.00	0.00	0.00
4,100.0	9.47	330.17	4,064.1	906.88	387.2	-222.0	-187.2	0.00	0.00	0.00
4,200.0	9.47	330.17	4,162.8	808.24	401.5	-230.2	-194.1	0.00	0.00	0.00
4,300.0	9.47	330.17	4,261.4	709.60	415.7	-238.4	-201.0	0.00	0.00	0.00
4,400.0	9.47	330.17	4,360.0	610.96	430.0	-246.6	-207.9	0.00	0.00	0.00
SHANNON										

Planning Report



Database:	EDM 5000.1 Single User Db	Local Co-ordinate Reference:	Well FAIRVIEW 9
Company:	EXTRACTION OIL & GAS	TVD Reference:	KB-EST @ 4971.0usft (Original Well Elev)
Project:	WELD COUNTY, COLORADO (NAD 83)	MD Reference:	KB-EST @ 4971.0usft (Original Well Elev)
Site:	NW SW SEC. 5 T2N R68W 6th P.M.	North Reference:	True
Well:	FAIRVIEW 9	Survey Calculation Method:	Minimum Curvature
Wellbore:	ORIGINAL WELLBORE		
Design:	PROPOSAL #1		

Planned Survey

MD (usft)	Inc (°)	Azi (°)	TVD (usft)	SS (usft)	+N/-S (usft)	+E/-W (usft)	Vertical Section (usft)	Dogleg Rate (°/100usft)	Build Rate (°/100usft)	Turn Rate (°/100usft)
4,450.7	9.47	330.17	4,410.0	561.00	437.2	-250.7	-211.4	0.00	0.00	0.00
4,500.0	9.47	330.17	4,458.7	512.32	444.3	-254.8	-214.8	0.00	0.00	0.00
4,600.0	9.47	330.17	4,557.3	413.69	458.5	-262.9	-221.7	0.00	0.00	0.00
4,700.0	9.47	330.17	4,656.0	315.05	472.8	-271.1	-228.6	0.00	0.00	0.00
4,800.0	9.47	330.17	4,754.6	216.41	487.1	-279.3	-235.5	0.00	0.00	0.00
4,900.0	9.47	330.17	4,853.2	117.77	501.4	-287.5	-242.4	0.00	0.00	0.00
5,000.0	9.47	330.17	4,951.9	19.13	515.6	-295.7	-249.3	0.00	0.00	0.00
5,100.0	9.47	330.17	5,050.5	-79.51	529.9	-303.8	-256.2	0.00	0.00	0.00
5,200.0	9.47	330.17	5,149.1	-178.14	544.2	-312.0	-263.1	0.00	0.00	0.00
5,300.0	9.47	330.17	5,247.8	-276.78	558.4	-320.2	-270.0	0.00	0.00	0.00
5,400.0	9.47	330.17	5,346.4	-375.42	572.7	-328.4	-276.9	0.00	0.00	0.00
5,500.0	9.47	330.17	5,445.1	-474.06	587.0	-336.6	-283.8	0.00	0.00	0.00
5,600.0	9.47	330.17	5,543.7	-572.70	601.2	-344.7	-290.6	0.00	0.00	0.00
5,700.0	9.47	330.17	5,642.3	-671.33	615.5	-352.9	-297.5	0.00	0.00	0.00
5,800.0	9.47	330.17	5,741.0	-769.97	629.8	-361.1	-304.4	0.00	0.00	0.00
5,900.0	9.47	330.17	5,839.6	-868.61	644.0	-369.3	-311.3	0.00	0.00	0.00
6,000.0	9.47	330.17	5,938.2	-967.25	658.3	-377.5	-318.2	0.00	0.00	0.00
6,100.0	9.47	330.17	6,036.9	-1,065.89	672.6	-385.7	-325.1	0.00	0.00	0.00
END OF TANGENT										
6,109.1	9.47	330.17	6,045.8	-1,074.83	673.9	-386.4	-325.8	0.00	0.00	0.00
6,200.0	7.65	330.17	6,135.7	-1,164.75	685.6	-393.1	-331.4	2.00	-2.00	0.00
6,300.0	5.65	330.17	6,235.1	-1,264.07	695.6	-398.9	-336.3	2.00	-2.00	0.00
6,400.0	3.65	330.17	6,334.7	-1,363.74	702.7	-402.9	-339.7	2.00	-2.00	0.00
6,500.0	1.65	330.17	6,434.6	-1,463.62	706.7	-405.2	-341.6	2.00	-2.00	0.00
EOD TO VERTICAL										
6,582.4	0.00	0.00	6,517.0	-1,546.00	707.7	-405.8	-342.1	2.00	-2.00	0.00
6,600.0	0.00	0.00	6,534.6	-1,563.61	707.7	-405.8	-342.1	0.00	0.00	0.00
KOP (10°/100ft BUR)										
6,612.4	0.00	0.00	6,547.0	-1,576.00	707.7	-405.8	-342.1	0.00	0.00	0.00
6,700.0	8.76	90.53	6,634.3	-1,663.27	707.6	-399.1	-335.5	10.00	10.00	0.00
SHARON SPRINGS										
6,721.0	10.86	90.53	6,655.0	-1,684.00	707.6	-395.5	-331.9	10.00	10.00	0.00
NIOBRARA										
6,781.8	16.94	90.53	6,714.0	-1,743.00	707.5	-380.9	-317.4	10.00	10.00	0.00
6,800.0	18.76	90.53	6,731.3	-1,760.28	707.4	-375.4	-311.8	10.00	10.00	0.00
6,900.0	28.76	90.53	6,822.7	-1,851.69	707.0	-335.1	-271.8	10.00	10.00	0.00
7,000.0	38.76	90.53	6,905.7	-1,934.72	706.5	-279.6	-216.5	10.00	10.00	0.00
7,100.0	48.76	90.53	6,977.9	-2,006.86	705.9	-210.6	-147.8	10.00	10.00	0.00
7,200.0	58.76	90.53	7,036.9	-2,065.90	705.1	-130.0	-67.6	10.00	10.00	0.00
FORT HAYS										
7,271.3	65.89	90.53	7,070.0	-2,099.00	704.5	-66.9	-4.8	10.00	10.00	0.00
7,300.0	68.76	90.53	7,081.1	-2,110.06	704.3	-40.4	21.5	10.00	10.00	0.00
7,400.0	78.76	90.53	7,109.0	-2,138.00	703.4	55.4	117.0	10.00	10.00	0.00
CODELL										
7,405.2	79.28	90.53	7,110.0	-2,139.00	703.4	60.6	122.1	10.00	10.00	0.00
7,500.0	88.75	90.53	7,119.9	-2,148.86	702.5	154.7	215.8	10.00	10.00	0.00
7" ICP - FAIRVIEW 9										
7,512.4	90.00	90.53	7,120.0	-2,149.00	702.4	167.1	228.1	10.00	10.00	0.00
7,600.0	90.00	90.53	7,120.0	-2,149.01	701.6	254.7	315.3	0.00	0.00	0.00
7,700.0	90.00	90.53	7,120.0	-2,149.02	700.6	354.7	414.8	0.00	0.00	0.00
7,800.0	90.00	90.53	7,120.0	-2,149.02	699.7	454.7	514.4	0.00	0.00	0.00
7,900.0	90.00	90.53	7,120.0	-2,149.03	698.8	554.7	613.9	0.00	0.00	0.00
8,000.0	90.00	90.53	7,120.0	-2,149.04	697.8	654.7	713.4	0.00	0.00	0.00

Planning Report



Database:	EDM 5000.1 Single User Db	Local Co-ordinate Reference:	Well FAIRVIEW 9
Company:	EXTRACTION OIL & GAS	TVD Reference:	KB-EST @ 4971.0usft (Original Well Elev)
Project:	WELD COUNTY, COLORADO (NAD 83)	MD Reference:	KB-EST @ 4971.0usft (Original Well Elev)
Site:	NW SW SEC. 5 T2N R68W 6th P.M.	North Reference:	True
Well:	FAIRVIEW 9	Survey Calculation Method:	Minimum Curvature
Wellbore:	ORIGINAL WELLBORE		
Design:	PROPOSAL #1		

Planned Survey										
MD (usft)	Inc (°)	Azi (°)	TVD (usft)	SS (usft)	+N/-S (usft)	+E/-W (usft)	Vertical Section (usft)	Dogleg Rate (°/100usft)	Build Rate (°/100usft)	Turn Rate (°/100usft)
8,100.0	90.00	90.53	7,120.0	-2,149.05	696.9	754.7	813.0	0.00	0.00	0.00
8,200.0	90.00	90.53	7,120.1	-2,149.05	696.0	854.7	912.5	0.00	0.00	0.00
8,300.0	90.00	90.53	7,120.1	-2,149.06	695.1	954.7	1,012.0	0.00	0.00	0.00
8,400.0	90.00	90.53	7,120.1	-2,149.07	694.1	1,054.7	1,111.5	0.00	0.00	0.00
8,500.0	90.00	90.53	7,120.1	-2,149.07	693.2	1,154.7	1,211.1	0.00	0.00	0.00
8,600.0	90.00	90.53	7,120.1	-2,149.08	692.3	1,254.7	1,310.6	0.00	0.00	0.00
8,700.0	90.00	90.53	7,120.1	-2,149.08	691.3	1,354.7	1,410.1	0.00	0.00	0.00
8,800.0	90.00	90.53	7,120.1	-2,149.09	690.4	1,454.7	1,509.6	0.00	0.00	0.00
8,900.0	90.00	90.53	7,120.1	-2,149.09	689.5	1,554.7	1,609.2	0.00	0.00	0.00
9,000.0	90.00	90.53	7,120.1	-2,149.10	688.6	1,654.7	1,708.7	0.00	0.00	0.00
9,100.0	90.00	90.53	7,120.1	-2,149.10	687.6	1,754.7	1,808.2	0.00	0.00	0.00
9,200.0	90.00	90.53	7,120.1	-2,149.11	686.7	1,854.6	1,907.8	0.00	0.00	0.00
9,300.0	90.00	90.53	7,120.1	-2,149.11	685.8	1,954.6	2,007.3	0.00	0.00	0.00
9,400.0	90.00	90.53	7,120.1	-2,149.12	684.9	2,054.6	2,106.8	0.00	0.00	0.00
9,500.0	90.00	90.53	7,120.1	-2,149.12	683.9	2,154.6	2,206.3	0.00	0.00	0.00
9,600.0	90.00	90.53	7,120.1	-2,149.12	683.0	2,254.6	2,305.9	0.00	0.00	0.00
9,700.0	90.00	90.53	7,120.1	-2,149.13	682.1	2,354.6	2,405.4	0.00	0.00	0.00
9,800.0	90.00	90.53	7,120.1	-2,149.13	681.1	2,454.6	2,504.9	0.00	0.00	0.00
9,900.0	90.00	90.53	7,120.1	-2,149.13	680.2	2,554.6	2,604.5	0.00	0.00	0.00
10,000.0	90.00	90.53	7,120.1	-2,149.14	679.3	2,654.6	2,704.0	0.00	0.00	0.00
10,100.0	90.00	90.53	7,120.1	-2,149.14	678.4	2,754.6	2,803.5	0.00	0.00	0.00
10,200.0	90.00	90.53	7,120.1	-2,149.14	677.4	2,854.6	2,903.0	0.00	0.00	0.00
10,300.0	90.00	90.53	7,120.1	-2,149.14	676.5	2,954.6	3,002.6	0.00	0.00	0.00
10,400.0	90.00	90.53	7,120.1	-2,149.14	675.6	3,054.6	3,102.1	0.00	0.00	0.00
10,500.0	90.00	90.53	7,120.1	-2,149.15	674.7	3,154.6	3,201.6	0.00	0.00	0.00
10,600.0	90.00	90.53	7,120.1	-2,149.15	673.7	3,254.6	3,301.2	0.00	0.00	0.00
10,700.0	90.00	90.53	7,120.1	-2,149.15	672.8	3,354.6	3,400.7	0.00	0.00	0.00
10,800.0	90.00	90.53	7,120.1	-2,149.15	671.9	3,454.6	3,500.2	0.00	0.00	0.00
10,900.0	90.00	90.53	7,120.1	-2,149.15	671.0	3,554.6	3,599.7	0.00	0.00	0.00
11,000.0	90.00	90.53	7,120.1	-2,149.15	670.1	3,654.6	3,699.3	0.00	0.00	0.00
11,100.0	90.00	90.53	7,120.1	-2,149.15	669.1	3,754.6	3,798.8	0.00	0.00	0.00
11,200.0	90.00	90.53	7,120.1	-2,149.15	668.2	3,854.6	3,898.3	0.00	0.00	0.00
11,300.0	90.00	90.53	7,120.1	-2,149.15	667.3	3,954.6	3,997.9	0.00	0.00	0.00
11,400.0	90.00	90.53	7,120.1	-2,149.15	666.4	4,054.6	4,097.4	0.00	0.00	0.00
11,500.0	90.00	90.53	7,120.1	-2,149.15	665.4	4,154.6	4,196.9	0.00	0.00	0.00
11,600.0	90.00	90.53	7,120.1	-2,149.15	664.5	4,254.5	4,296.5	0.00	0.00	0.00
11,700.0	90.00	90.53	7,120.1	-2,149.14	663.6	4,354.5	4,396.0	0.00	0.00	0.00
11,800.0	90.00	90.53	7,120.1	-2,149.14	662.7	4,454.5	4,495.5	0.00	0.00	0.00
11,900.0	90.00	90.53	7,120.1	-2,149.14	661.7	4,554.5	4,595.0	0.00	0.00	0.00
12,000.0	90.00	90.53	7,120.1	-2,149.14	660.8	4,654.5	4,694.6	0.00	0.00	0.00
12,100.0	90.00	90.53	7,120.1	-2,149.14	659.9	4,754.5	4,794.1	0.00	0.00	0.00
12,200.0	90.00	90.53	7,120.1	-2,149.13	659.0	4,854.5	4,893.6	0.00	0.00	0.00
12,300.0	90.00	90.53	7,120.1	-2,149.13	658.1	4,954.5	4,993.2	0.00	0.00	0.00
12,400.0	90.00	90.53	7,120.1	-2,149.13	657.1	5,054.5	5,092.7	0.00	0.00	0.00
12,500.0	90.00	90.53	7,120.1	-2,149.12	656.2	5,154.5	5,192.2	0.00	0.00	0.00
12,600.0	90.00	90.53	7,120.1	-2,149.12	655.3	5,254.5	5,291.7	0.00	0.00	0.00
12,700.0	90.00	90.53	7,120.1	-2,149.12	654.4	5,354.5	5,391.3	0.00	0.00	0.00
12,800.0	90.00	90.53	7,120.1	-2,149.11	653.5	5,454.5	5,490.8	0.00	0.00	0.00
12,900.0	90.00	90.53	7,120.1	-2,149.11	652.5	5,554.5	5,590.3	0.00	0.00	0.00
13,000.0	90.00	90.53	7,120.1	-2,149.10	651.6	5,654.5	5,689.9	0.00	0.00	0.00
13,100.0	90.00	90.53	7,120.1	-2,149.10	650.7	5,754.5	5,789.4	0.00	0.00	0.00
13,200.0	90.00	90.53	7,120.1	-2,149.09	649.8	5,854.5	5,888.9	0.00	0.00	0.00
13,300.0	90.00	90.53	7,120.1	-2,149.09	648.9	5,954.5	5,988.4	0.00	0.00	0.00
13,400.0	90.00	90.53	7,120.1	-2,149.08	647.9	6,054.5	6,088.0	0.00	0.00	0.00

Database:	EDM 5000.1 Single User Db	Local Co-ordinate Reference:	Well FAIRVIEW 9
Company:	EXTRACTION OIL & GAS	TVD Reference:	KB-EST @ 4971.0usft (Original Well Elev)
Project:	WELD COUNTY, COLORADO (NAD 83)	MD Reference:	KB-EST @ 4971.0usft (Original Well Elev)
Site:	NW SW SEC. 5 T2N R68W 6th P.M.	North Reference:	True
Well:	FAIRVIEW 9	Survey Calculation Method:	Minimum Curvature
Wellbore:	ORIGINAL WELLBORE		
Design:	PROPOSAL #1		

Planned Survey

MD (usft)	Inc (°)	Azi (°)	TVD (usft)	SS (usft)	+N/-S (usft)	+E/-W (usft)	Vertical Section (usft)	Dogleg Rate (°/100usft)	Build Rate (°/100usft)	Turn Rate (°/100usft)
13,500.0	90.00	90.53	7,120.1	-2,149.08	647.0	6,154.5	6,187.5	0.00	0.00	0.00
13,600.0	90.00	90.53	7,120.1	-2,149.07	646.1	6,254.5	6,287.0	0.00	0.00	0.00
13,700.0	90.00	90.53	7,120.1	-2,149.06	645.2	6,354.5	6,386.6	0.00	0.00	0.00
13,800.0	90.00	90.53	7,120.1	-2,149.06	644.3	6,454.5	6,486.1	0.00	0.00	0.00
13,900.0	90.00	90.53	7,120.1	-2,149.05	643.3	6,554.4	6,585.6	0.00	0.00	0.00
14,000.0	90.00	90.53	7,120.0	-2,149.04	642.4	6,654.4	6,685.1	0.00	0.00	0.00
14,100.0	90.00	90.53	7,120.0	-2,149.04	641.5	6,754.4	6,784.7	0.00	0.00	0.00
14,200.0	90.00	90.53	7,120.0	-2,149.03	640.6	6,854.4	6,884.2	0.00	0.00	0.00
14,300.0	90.00	90.53	7,120.0	-2,149.02	639.7	6,954.4	6,983.7	0.00	0.00	0.00
14,400.0	90.00	90.53	7,120.0	-2,149.01	638.7	7,054.4	7,083.3	0.00	0.00	0.00
14,500.0	90.00	90.53	7,120.0	-2,149.01	637.8	7,154.4	7,182.8	0.00	0.00	0.00
BHL - FAIRVIEW 9										
14,576.8	90.00	90.53	7,120.0	-2,149.00	637.1	7,231.2	7,259.2	0.00	0.00	0.00

Formations

MD (usft)	TVD (usft)	Name	Lithology	Dip (°)	Dip Direction (°)
3,053.6	3,032.0	PARKMAN		0.00	
3,882.9	3,850.0	SUSSEX		0.00	
4,450.7	4,410.0	SHANNON		0.00	
6,721.0	6,655.0	SHARON SPRINGS		0.00	
6,781.8	6,714.0	NIOBRARA		0.00	
7,271.3	7,070.0	FORT HAYS		0.00	
7,405.2	7,110.0	CODELL		0.00	

Plan Annotations

MD (usft)	TVD (usft)	Local Coordinates		Comment
		+N/-S (usft)	+E/-W (usft)	
1,150.0	1,150.0	0.0	0.0	START NUDGE (2°/100ft BUR)
1,623.3	1,621.2	33.8	-19.4	EOB TO 9.47° INC
6,109.1	6,045.8	673.9	-386.4	END OF TANGENT
6,582.4	6,517.0	707.7	-405.8	EOD TO VERTICAL
6,612.4	6,547.0	707.7	-405.8	KOP (10°/100ft BUR)
7,512.4	7,120.0	702.4	167.1	7" ICP - FAIRVIEW 9
14,576.8	7,120.0	637.1	7,231.2	BHL - FAIRVIEW 9