

# WELL LOCATION CERTIFICATE: FAIRVIEW 6

SECTION 5, TOWNSHIP 2 NORTH, RANGE 68 WEST, 6TH P.M.

NW COR. SEC. 5  
1004.10' W.C. EAST  
3 1/4" ALUM. CAP  
PLS 38285

N 89°22'03" E 2638.57' (C)

N 89°11'56" E 2695.79'

NE COR. SEC. 5  
3 1/4" ALUM. CAP  
PLS 17662

N 1/4 COR. SEC. 5  
2 1/2" ALUM. CAP  
PLS 36073

NOTES:  
BH LOCATION PROVIDED BY CLIENT.  
LAND SURFACE USE-IRRIGATED CROP  
SEE ATTACHED MAP FOR ADDITIONAL  
IMPROVEMENTS WITHIN 500'.

PDOP= 1.6  
GPS OPERATOR: ALAN HNIZDO

SURFACE LOCATION  
GROUND ELEVATION= 4945'  
NAD83  
LATITUDE= 40.165763°  
LONGITUDE= 105.035167°

LANDING POINT LOCATION  
NAD83  
LATITUDE= 40.163386°  
LONGITUDE= 105.034975°

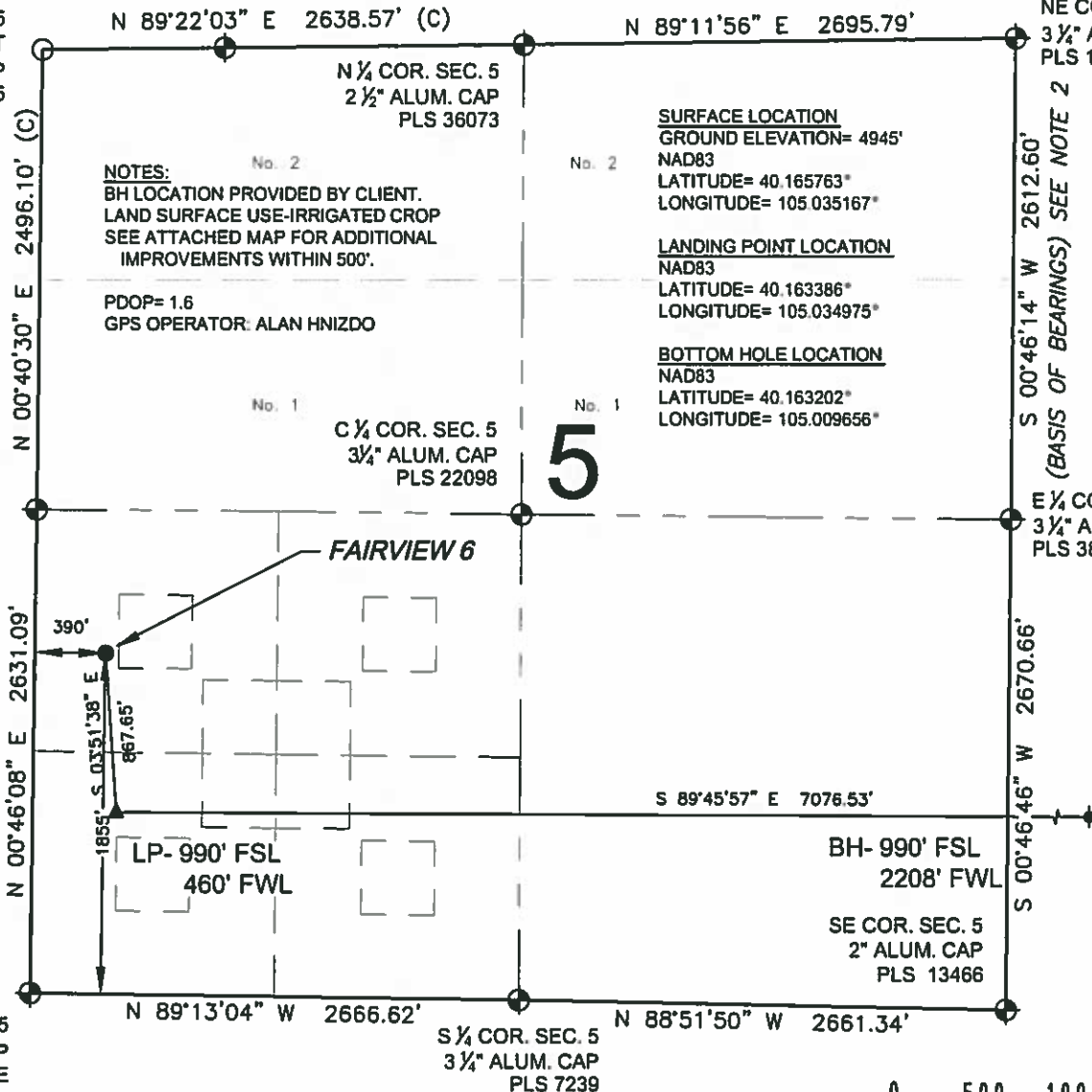
BOTTOM HOLE LOCATION  
NAD83  
LATITUDE= 40.163202°  
LONGITUDE= 105.009656°

C 1/4 COR. SEC. 5  
3 1/4" ALUM. CAP  
PLS 22098

5

W 1/4 COR. SEC. 5  
2" ALUM. CAP  
PLS 25937

E 1/4 COR. SEC. 5  
3 1/4" ALUM. CAP  
PLS 38285



WELL FAIRVIEW 6 TO BE LOCATED 1855' FSL AND 390' FWL

## LEGEND

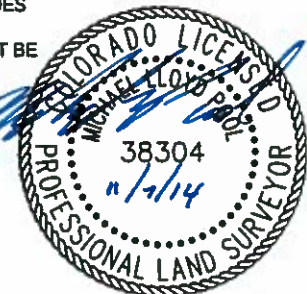
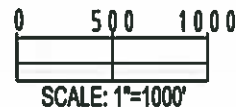
- ◉ = EXISTING MONUMENT
- ◐ = CALCULATED POSITION
- = PROPOSED WELL
- ◆ = EXISTING WELL
- ⬮ = BOTTOM HOLE
- ▲ = LANDING POINT
- LP = LANDING POINT
- BH = BOTTOM HOLE

## NOTES:

- THIS FIELD SURVEY CONFORMS TO THE MINIMUM STANDARDS SET BY THE C.O.G.C.C., RULE NO. 215
- BEARINGS AND DISTANCE SHOWN HEREON ARE GRID AND BASED ON THE COLORADO STATE PLANE COORDINATE SYSTEM, NAD 83/2011 BETWEEN MONUMENTS AS LABELED HEREON AND ELEVATIONS SHOWN ARE NAVD 88, AS DERIVED BY GPS OBSERVATIONS.
- GRID DISTANCES ARE SHOWN, AS MEASURED IN THE FIELD, WITH TIES TO WELLS MEASURED PERPENDICULAR TO SECTION LINES.

I, MICHAEL L. POOL, A LICENSED PROFESSIONAL LAND SURVEYOR IN THE STATE OF COLORADO DO HEREBY CERTIFY TO **EXTRACTION OIL & GAS**, THAT THE SURVEY AND WELL LOCATION CERTIFICATE SHOWN HEREON WERE DONE BY ME OR UNDER MY DIRECT SUPERVISION AND THAT THE DRAWING SHOWN HEREON ACCURATELY DEPICTS THE PROPOSED LOCATION OF THE WELL. THIS CERTIFICATE DOES NOT REPRESENT A LAND SURVEY PLAT OR IMPROVEMENT SURVEY PLAT AS DEFINED BY C.R.S. 38-51-102 AND CANNOT BE RELIED UPON TO DETERMINE OWNERSHIP.

MICHAEL L. POOL, PLS 38304  
COLORADO LICENSED PROFESSIONAL LAND SURVEYOR  
FOR AND ON BEHALF OF P.F.S., LLC



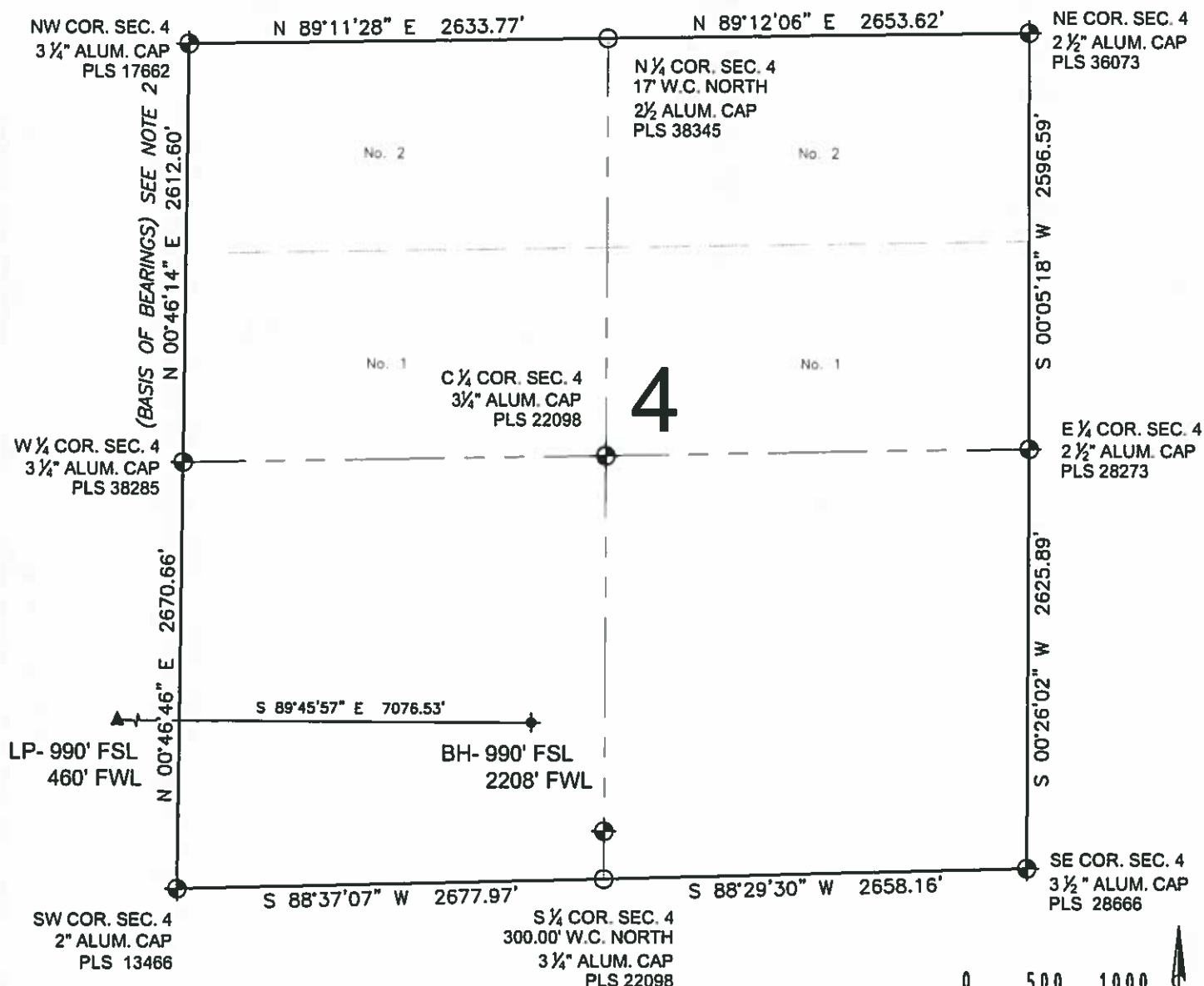
SHEET 1 OF 2

PREPARED BY: <b>PFS</b> Petroleum Field Services, LLC 15335 Hilkey Circle Denver, CO 80221	FIELD DATE: 07-26-14 DRAWING DATE: 11-05-14 BY: MDCA CHECKED: WDW	SURFACE LOCATION: NW 1/4 SW 1/4, SEC. 5, T2N, R68W, 6TH P.M. WELD COUNTY, COLORADO
--	--	---

NOTICE: ACCORDING TO COLORADO LAW YOU MUST COMMENCE ANY LEGAL ACTION BASED UPON ANY DEFECT IN THIS SURVEY WITHIN THREE YEARS AFTER YOU FIRST DISCOVER SUCH DEFECT. IN NO EVENT MAY ANY ACTION BASED UPON ANY DEFECT IN THIS SURVEY BE COMMENCED MORE THAN TEN YEARS FROM THIS SAID DATE OF THIS CERTIFICATION SHOWN HEREON.

# WELL LOCATION CERTIFICATE: FAIRVIEW 6

SECTION 4, TOWNSHIP 2 NORTH, RANGE 68 WEST, 6TH P.M.



## LEGEND

- ⊕ = EXISTING MONUMENT    ♦ = BOTTOM HOLE
- = CALCULATED POSITION    ▲ = LANDING POINT
- = PROPOSED WELL    LP = LANDING POINT
- ◆ = EXISTING WELL    BH = BOTTOM HOLE


## NOTES:

1. THIS FIELD SURVEY CONFORMS TO THE MINIMUM STANDARDS SET BY THE C.O.G.C.C., RULE NO. 215
2. BEARINGS AND DISTANCE SHOWN HEREON ARE GRID AND BASED ON THE COLORADO STATE PLANE COORDINATE SYSTEM, NAD 83/2011 BETWEEN MONUMENTS AS LABELED HEREON AND ELEVATIONS SHOWN ARE NAVD 88, AS DERIVED BY GPS OBSERVATIONS.
3. GRID DISTANCES ARE SHOWN, AS MEASURED IN THE FIELD, WITH TIES TO WELLS MEASURED PERPENDICULAR TO SECTION LINES.

SHEET 2 OF 2



MICHAEL L. POOL, PLS 38304  
COLORADO LICENSED PROFESSIONAL LAND SURVEYOR  
FOR AND ON BEHALF OF P.F.S., LLC

<b>PREPARED BY:</b>  Petroleum Field Services, LLC 1536 Hilltop Circle Denver, CO 80221	<b>FIELD DATE:</b> 07-26-14	<b>SURFACE LOCATION:</b> NW 1/4 SW 1/4,
	<b>DRAWING DATE:</b> 11-05-14	SEC. 5, T2N, R68W, 6TH P.M. WELD COUNTY, COLORADO

NOTICE: ACCORDING TO COLORADO LAW YOU MUST COMMENCE ANY LEGAL ACTION BASED UPON ANY DEFECT IN THIS SURVEY WITHIN THREE YEARS AFTER YOU FIRST DISCOVER SUCH DEFECT. IN NO EVENT MAY ANY ACTION BASED UPON ANY DEFECT IN THIS SURVEY BE COMMENCED MORE THAN TEN YEARS FROM THIS SAID DATE OF THIS CERTIFICATION SHOWN HEREON.