

1801 Broadway
Suite 500
Denver, Colorado 80202



Callie Fiddes
Regulatory Technician
Tel: 303.398.0550
E-mail: cfiddes@gwogco.com

December 10, 2014

Colorado Oil and Gas Conservation Commission
1120 Lincoln Street, Suite 801
Denver, Colorado 80203

RE: **Proposed Wellbore Spacing Unit**
Schneider HD 11-392HN

Niobrara New Drill
Township 4 North, Range 6 West, 6th P.M.
Section 7
Weld County, Colorado

Dear Director:

Great Western Operating Company, LLC is planning to drill the above captioned well in accordance with the provisions of COGCC Rule 318A.e.

Great Western proposed wellbore spacing unit consists of:

- **S/2 SE/4 Sec 11, S/2 S/2 Sec 12, N/2 N/2 Sec 13, N/2 NE/4 Sec 14**
- **480 acres**

The 30 day notification time period has passed and we have not received any objections to such well locations or proposed spacing unit, therefore Great Western hereby requests the Director to approve the above mentioned well. Great Western Operating Company, LLC respectfully requests that the COGCC review the enclosed map illustrating the proposed wellbore spacing unit.

Respectfully,

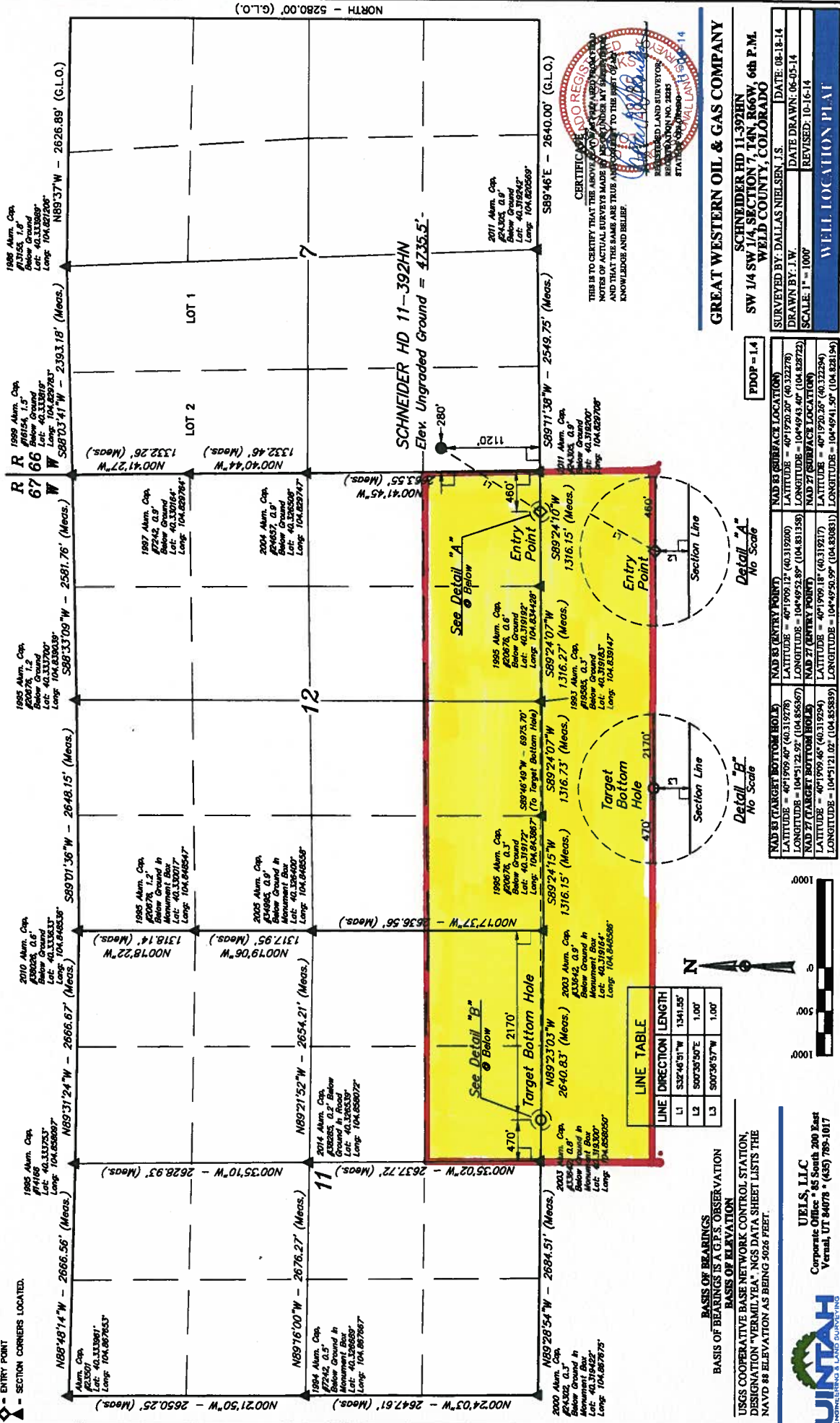
Callie Fiddes

Callie Fiddes
Regulatory Technician
Great Western Operating Company, LLC

T4N, R66W, 6th P.M.

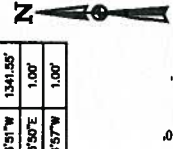
LEGEND:

- 90° SYMBOL
- PROPOSED WELLHEAD
- TARGET BOTTOM HOLE
- ◇ ENTRY POINT
- ▲ SECTION CORNERS LOCATED



LINE TABLE

| LINE | DIRECTION | LENGTH |
|------|-------------|----------|
| L1 | S32°48'51"W | 1341.55' |
| L2 | S07°35'50"E | 1.00' |
| L3 | S07°36'57"W | 1.00' |



BASIS OF BEARINGS IS A G.P.S. OBSERVATION
BASIS OF ELEVATION IS USGS COOPERATIVE BASE NETWORK CONTROL STATION DESIGNATION 'VERMILYEA'. NGS DATA SHEET LISTS THE NAVD 83 ELEVATION AS BEING 5026 FEET.

UWELLS, LLC
Corporate Office • 85 South 200 East
Vernal, UT 84078 • (435) 789-1017



GREAT WESTERN OIL & GAS COMPANY

SCHNEIDER HD 11-392HN
SW 1/4 SW 1/4, SECTION 7, T4N, R66W, 6th P.M.
WELD COUNTY, COLORADO

PROF = 1:4

| SURVEYED BY: DALLAS NIELSEN, J.S. | | DATE: 08-18-14 |
|-----------------------------------|----------------------|----------------|
| DRAWN BY: J.W. | DATE DRAWN: 06-05-14 | |
| SCALE: 1" = 1000' | REVISED: 10-16-14 | |

WELL LOCATION PLAT



CERTIFICATE
THIS IS TO CERTIFY THAT THE ABOVE SURVEY WAS MADE BY THE ABOVE SURVEYOR AND THAT THE SAME ARE TRUE AND CORRECT TO THE BEST OF HIS KNOWLEDGE AND BELIEF.