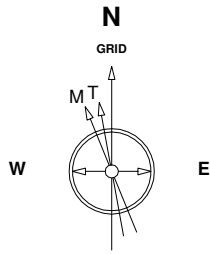


Great Western Operating Company, LLC

Location	Colorado	Slot	Slot #13
Field	Wattenberg	Well	Schneider HD 11-392HN
Installation	Schneider - South	Wellbore	Schneider HD 11-392HN (PWB)



22-Jul-2014
IGRF Model [1900.0-2015.0] Dip: -29.72 deg Field: 32220.6 nT
Magnetic North is 4.47 deg West of True North
GRID North is 0.43 deg East of True North
To correct azimuth from True to GRID subtract 0.43 deg
To correct azimuth from Magnetic to GRID subtract 4.91 deg

Scale 1 cm = 375 ft

East (feet) ->

-11250 -10500 -9750 -9000 -8250 -7500 -6750 -6000 -5250 -4500 -3750 -3000 -2250 -1500 -750 0 750 1500

S/2 Sec 11, T4N, R67W

S/2 Sec 12, T4N, R67W

TD - 1 FSL, 2170 FEL

EP - 1 FSL, 460 FEL

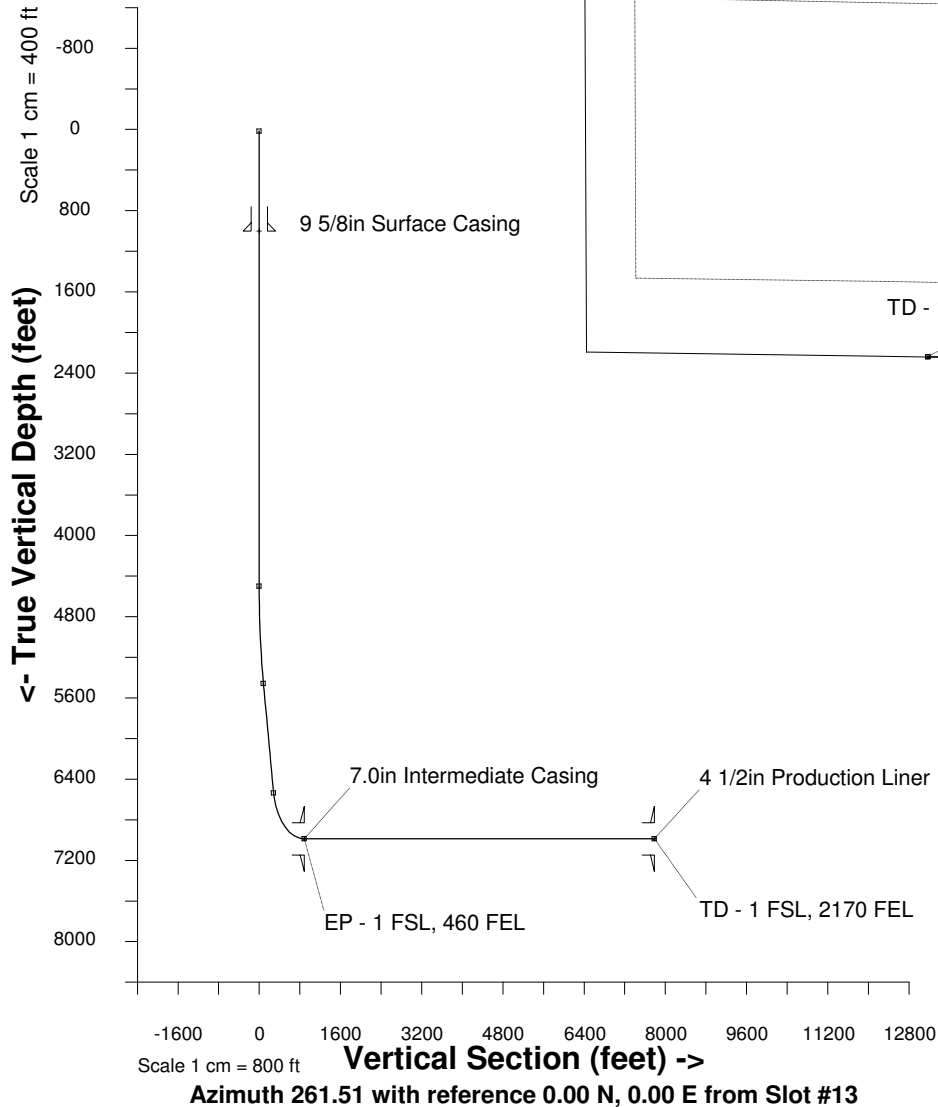
9 5/8in Surface Casing

7.0in Intermediate Casing

4 1/2in Production Liner

EP - 1 FSL, 460 FEL

TD - 1 FSL, 2170 FEL



WELL PROFILE DATA

Point	MD	Inc	Azi	TVD	North	East	deg/100ft	V. Sect
Tie on	16.20	0.00	0.00	16.20	0.00	0.00	0.00	-0.00
KOP	4500.00	0.00	0.00	4500.00	0.00	0.00	0.00	-0.00
End of Build	5502.22	30.07	190.25	5456.85	-252.88	-45.73	3.00	82.58
End of Hold	6748.33	30.07	190.25	6535.29	-867.23	-156.82	0.00	283.20
Target EP - 1 FSL, 460	7596.24	90.00	269.81	6988.00	-1126.86	-726.55	10.00	885.03
T.D. & Target TD - 1 FS	14570.17	90.00	269.81	6988.00	-1150.05	-7700.44	0.00	7785.85

Created by admin
Date plotted 20-Nov-2014

Plot reference is Schneider HD 11-392HN (PWB).
Ref wellpath is Schneider HD 11-392HN (PWP#1).
Coordinates are in feet reference Slot #13.
True Vertical Depths are reference Rig Datum.
Measured Depths are reference Rig Datum.
Rig Datum: Planned Datum #1
Rig Datum to Mean Sea Level: 4751.30 ft.
Plot North is aligned to GRID North.