

1801 Broadway
Suite 500
Denver, Colorado 80202



Callie Fiddes
Regulatory Technician
Tel: 303.398.0550
E-mail: cfiddes@gwogco.com

December 10, 2014

Colorado Oil and Gas Conservation Commission
1120 Lincoln Street, Suite 801
Denver, Colorado 80203

RE: **Proposed Wellbore Spacing Unit**
Schneider HD 11-352HN

Niobrara New Drill
Township 4 North, Range 6~~W~~ West, 6th P.M.
Section 7
Weld County, Colorado

Dear Director:

Great Western Operating Company, LLC is planning to drill the above captioned well in accordance with the provisions of COGCC Rule 318A.e.

Great Western proposed wellbore spacing unit consists of:

- **S/2 SE/4 Sec 11, S/2 S/2 Sec 12**
- **240 acres**

The 30 day notification time period has passed and we have not received any objections to such well locations or proposed spacing unit, therefore Great Western hereby requests the Director to approve the above mentioned well. Great Western Operating Company, LLC respectfully requests that the COGCC review the enclosed map illustrating the proposed wellbore spacing unit.

Respectfully,

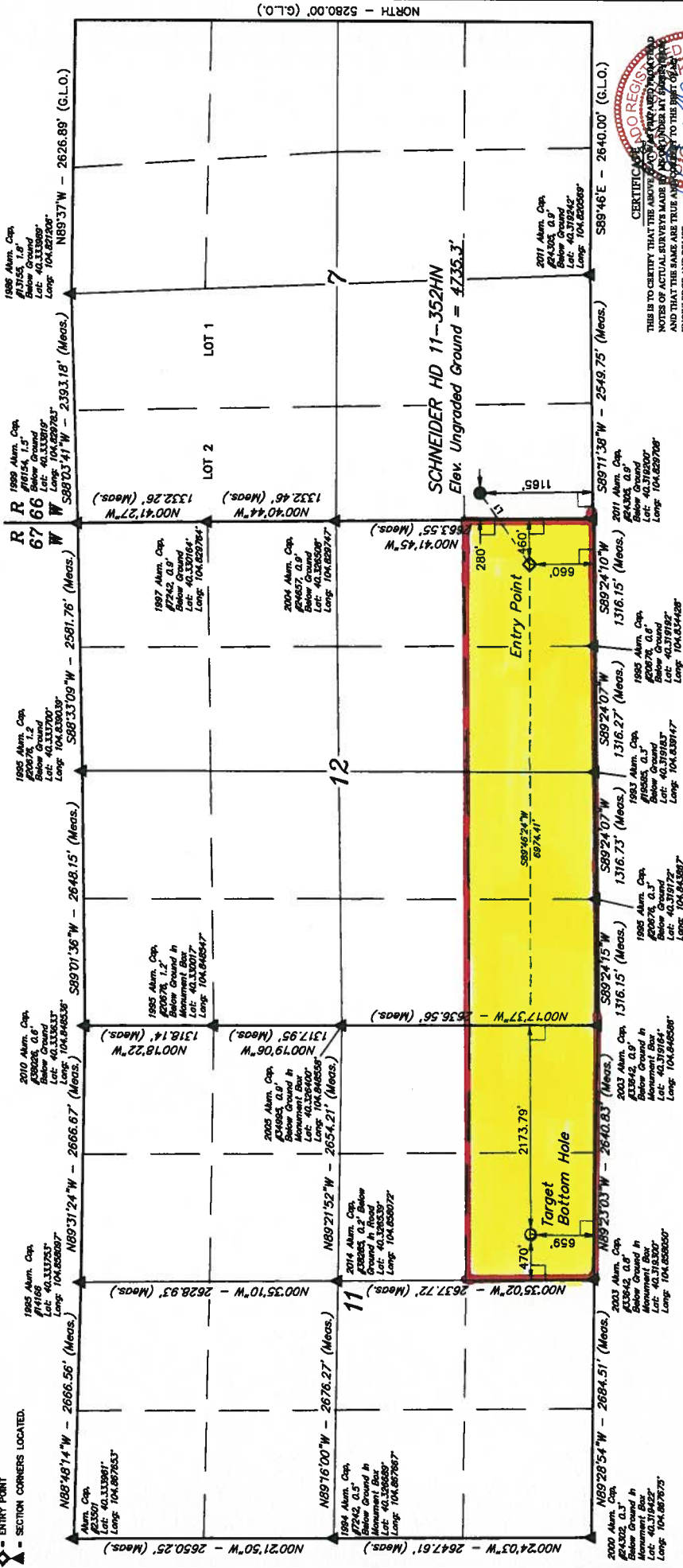
Callie Fiddes

Callie Fiddes
Regulatory Technician
Great Western Operating Company, LLC

T4N, R66W, 6th P.M.

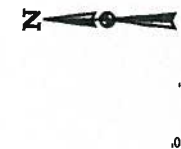
LEGEND:

- 80' SYMBOL
- PROPOSED WELLHEAD.
- TARGET BOTTOM HOLE.
- ENTRY POINT
- SECTION CORNERS LOCATED.



CERTIFICATE OF SURVEY
THIS IS TO CERTIFY THAT THE ABOVE SURVEY WAS MADE BY ME AND MY DEPUTY AND THAT THE SAME ARE TRUE AND CORRECT TO THE BEST OF MY KNOWLEDGE AND BELIEF.

LINE TABLE		
LINE	DIRECTION	LENGTH
11	S84°55'45\"W	866.82'



BASIS OF BEARINGS
BASIS OF ELEVATION
USGS COOPERATIVE BASE NETWORK CONTROL STATION
DESIGNATION "VERMILYEA" NGS DATA SHEET LISTS THE
NAVD 83 ELEVATION AS BEING 5026 FEET.

GREAT WESTERN OIL & GAS COMPANY
SW 1/4 SW 1/4, SECTION 7, T4N, R66W, 6th P.M.
SCHNEIDER HD 11-352HN
WELL LOCATION, COLORADO

SURVEYED BY: J. L. NIELSEN, J.S.	DATE: 08-18-14
DRAWN BY: J.W.	DATE DRAWN: 06-05-14
SCALE: 1" = 100'	REVISED: 10-16-14
WELL LOCATION PLAN	

PDOP = 1.4	
LINE	COORDINATE
NAD 83 (TARGET BOTTOM HOLE)	NAD 83 (ENTRY POINT)
LINE	COORDINATE
11	COORDINATE

UWELLS, LLC
Corporate Office: 1600 South 200 East
Vernal, UT 84078 • (435) 785-1017

