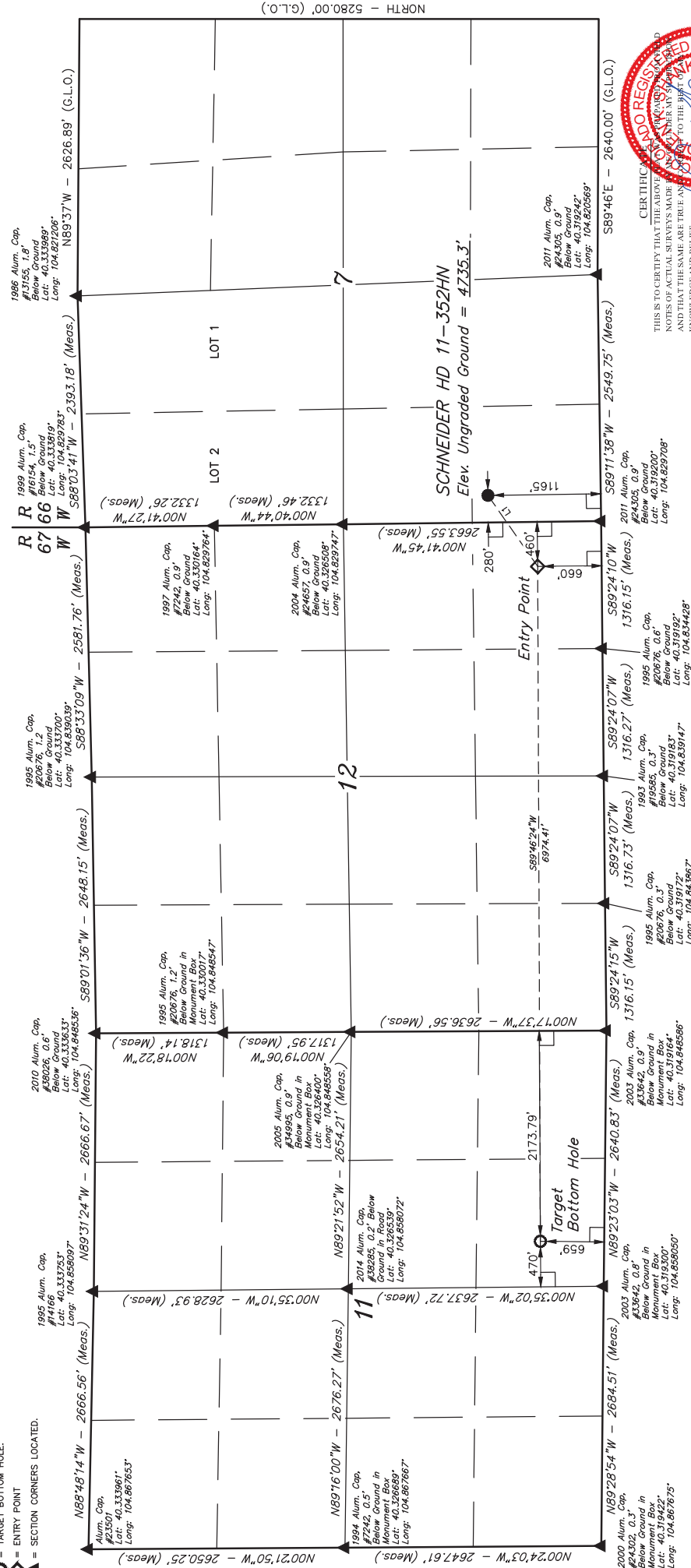


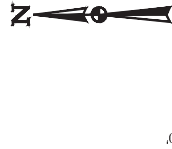
T4N, R66W, 6th P.M.

LEGEND:

- 90° SYMBOL
- PROPOSED WELLHEAD.
- TARGET BOTTOM HOLE.
- ENTRY POINT
- SECTION CORNERS LOCATED.



LINE TABLE		
LINE	DIRECTION	LENGTH
L1	S54°59'45"W	895.82'



BASIS OF BEARINGS  
BASIS OF ELEVATION

USGS COOPERATIVE BASE NETWORK CONTROL STATION.  
DESIGNATION "VERMILYEA", NGS DATA SHEET LISTS THE  
NAVD 88 ELEVATION AS BEING 5026 FEET.



UELS, LLC  
Corporate Office: 85 South 200 East  
Vernal, UT 84078 • (435) 789-1017

GREAT WESTERN OIL & GAS COMPANY

SCNEIDER HD 11-352HN  
SW 1/4 SW 1/4 SECTION 7, T4N, R66W, 6th P.M.  
WELD COUNTY, COLORADO

SURVEYED BY: J.W.	DATE: 08-18-14
DRAWN BY: J.W.	DATE: 06-05-14
SCALE: 1" = 1000'	REVISED: 10-16-14

WELL LOCATION PLAT



THIS IS TO CERTIFY THAT THE ABOVE  
NOTES OF ACTUAL SURVEYS MADE  
AND THAT THE SAME ARE TRUE AND  
KNOWLEDGE AND BELIEF.

NAD 83 (SURFACE LOCATION)	
LATITUDE	40°19'30.64" (40.322400)
LONGITUDE	104°49'45.40" (104.828722)
NAD 27 (SURFACE LOCATION)	
LATITUDE	40°19'30.71" (40.322419)
LONGITUDE	104°49'41.50" (104.828194)

PDOP = 1.4

NAD 83 (ENTRY POINT)	
LATITUDE	40°19'15.63" (40.321008)
LONGITUDE	104°49'52.92" (104.831367)
NAD 27 (ENTRY POINT)	
LATITUDE	40°19'15.69" (40.321025)
LONGITUDE	104°49'51.03" (104.830844)

NAD 83 (TARGET BOTTOM HOLE)	
LATITUDE	40°19'15.90" (40.321083)
LONGITUDE	104°51'22.94" (104.856372)
NAD 27 (TARGET BOTTOM HOLE)	
LATITUDE	40°19'15.97" (40.321103)
LONGITUDE	104°51'21.04" (104.855844)