

1801 Broadway
Suite 500
Denver, Colorado 80202



Callie Fiddes
Regulatory Technician
Tel: 303.398.0550
E-mail: cfiddes@gwogco.com

December 10, 2014

Colorado Oil and Gas Conservation Commission
1120 Lincoln Street, Suite 801
Denver, Colorado 80203

RE: **Proposed Wellbore Spacing Unit**
Schneider HD 11-329HN

Niobrara New Drill
Township 4 North, Range 6th West, 6th P.M.
Section 7
Weld County, Colorado

Dear Director:

Great Western Operating Company, LLC is planning to drill the above captioned well in accordance with the provisions of COGCC Rule 318A.e.

Great Western proposed wellbore spacing unit consists of:

- **SE/4 Sec 11, S/2 Sec 12**
- **480 acres**

The 30 day notification time period has passed and we have not received any objections to such well locations or proposed spacing unit, therefore Great Western hereby requests the Director to approve the above mentioned well. Great Western Operating Company, LLC respectfully requests that the COGCC review the enclosed map illustrating the proposed wellbore spacing unit.

Respectfully,

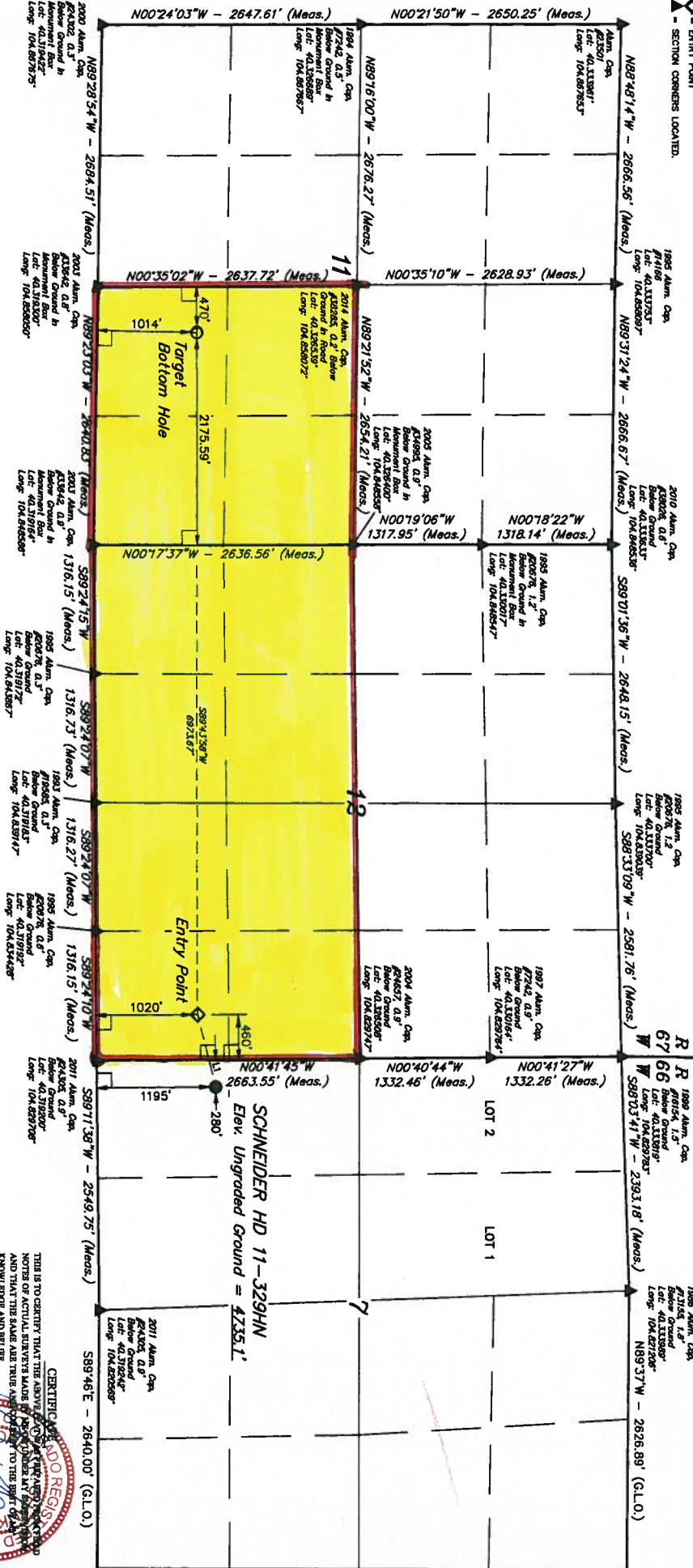
Callie Fiddes

Callie Fiddes
Regulatory Technician
Great Western Operating Company, LLC

LEGEND:

- 90° SYMBOL
- PROPOSED WELLHEAD
- TARGET BOTTOM HOLE
- ENTRY POINT
- SECTION CORNERS LOCATED

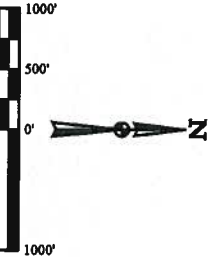
T4N, R66W, 6th P.M.



BASE OF BEARINGS
BASIS OF BEARINGS IS A GPS OBSERVATION
BASIS OF ELEVATION
USGS COOPERATIVE BASE NETWORK CONTROL STATION,
DESIGNATION: VERNAL, YEA - NGS DATA SHEET LISTS THE
NAVD 88 ELEVATION AS BEING 5026 FEET.



UTECH, LLC
Corporate Office • 45 South 200 East
Vernal, UT 84078 • (435) 789-1017



| LINE TABLE | | |
|------------|-------------|---------|
| LINE | DIRECTION | LENGTH |
| L1 | S78°00'02"W | 780.41' |

| NAD 83 TARGET BOTTOM HOLE | | NAD 83 ENTRY POINT | | NAD 83 SURFACE LOCATION | |
|---------------------------------------|---------------------------------------|---------------------------------------|--|-------------------------|--|
| LATITUDE = 40°19'13.41" (40.32058) | LATITUDE = 40°19'13.18" (40.32194) | LATITUDE = 40°19'20.54" (40.32483) | | | |
| LONGITUDE = 104°51'12.99" (104.85372) | LONGITUDE = 104°49'52.94" (104.83172) | LONGITUDE = 104°49'46.46" (104.82872) | | | |
| NAD 83 TARGET BOTTOM HOLE | | NAD 83 ENTRY POINT | | NAD 83 SURFACE LOCATION | |
| LATITUDE = 40°19'13.47" (40.32075) | LATITUDE = 40°19'13.25" (40.32014) | LATITUDE = 40°19'21.00" (40.32250) | | | |
| LONGITUDE = 104°51'12.00" (104.85387) | LONGITUDE = 104°49'51.00" (104.82887) | LONGITUDE = 104°49'41.50" (104.82819) | | | |

PDOP = 1.2

| | |
|---|----------------------|
| SCHNEIDER HD 11-329HN | |
| SW 1/4 SW 1/4, SECTION 7, T4N, R66W, 6th P.M. | |
| WELD COUNTY, COLORADO | |
| SURVEYED BY: DALLAS NIELSEN, J.S. | DATE: 08-18-14 |
| DRAWN BY: J.W. | DATE DRAWN: 06-05-14 |
| SCALE: 1" = 1000' | REVISED: 10-16-14 |
| WELL LOCATION PLAT | |

THIS IS TO CERTIFY THAT THE ABOVE IS A TRUE AND CORRECT COPY OF THE ORIGINAL SURVEY MAP AND THAT THE SAME ARE TRUE AND CORRECT TO THE BEST OF OUR KNOWLEDGE AND BELIEF.



NORTH - 5280.00' (G.L.O.)