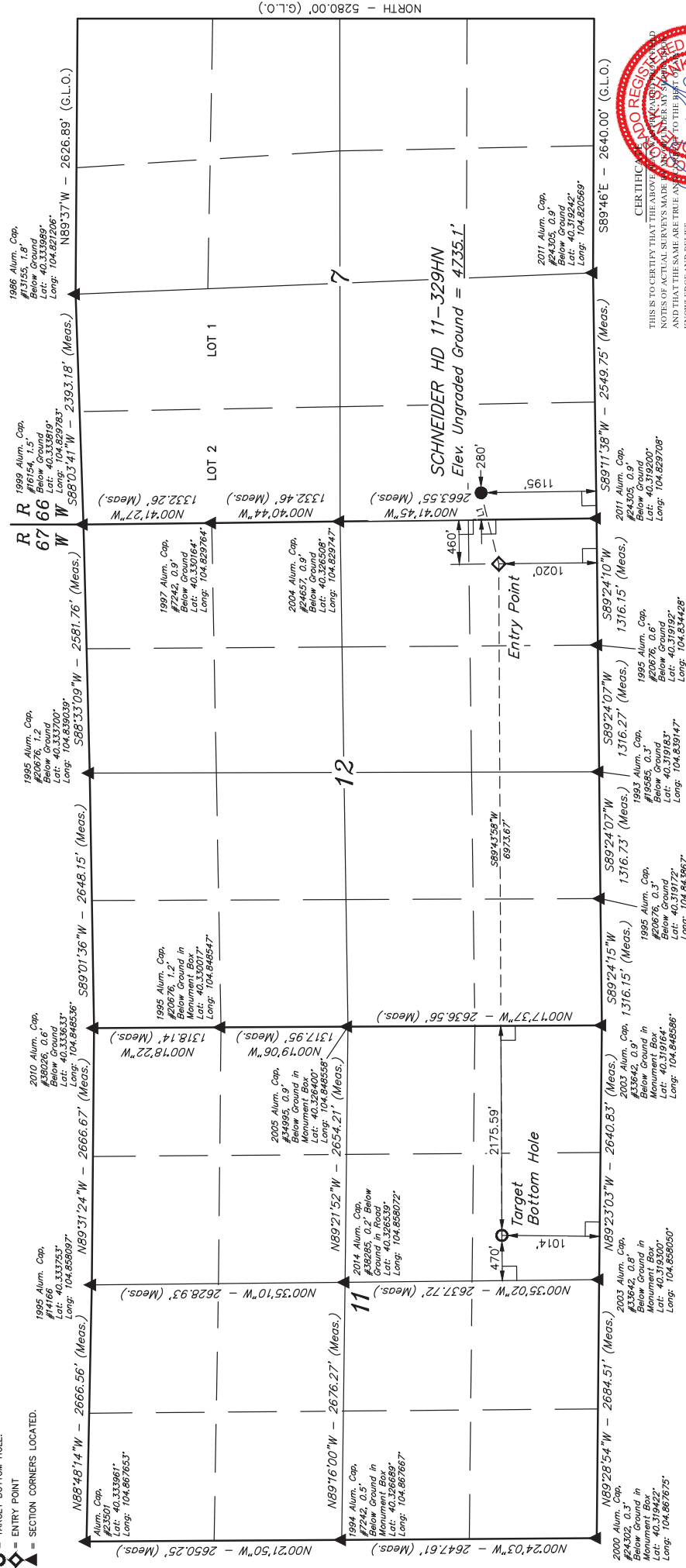


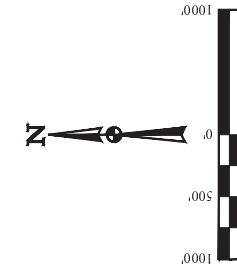
T4N, R66W, 6th P.M.

LEGEND:

- 90° SYMBOL
- PROPOSED WELLHEAD.
- TARGET BOTTOM HOLE.
- ENTRY POINT
- SECTION CORNERS LOCATED.



LINE TABLE		
LINE	DIRECTION	LENGTH
L1	S76°00'02"W	760.41'



BASIS OF BEARINGS
BASIS OF ELEVATION

USGS COOPERATIVE BASE NETWORK CONTROL STATION.
DESIGNATION "VERMILYEA", NGS DATA SHEET LISTS THE
NAVD 88 ELEVATION AS BEING 5026 FEET.

UPLS, LLC
Corporate Office: 85 South 200 East
Vernal, UT 84078 • (435) 789-1017



GREAT WESTERN OIL & GAS COMPANY

SCHNEIDER HD 11-329HN
SW 1/4 SW 1/4 SECTION 7, T4N, R66W, 6th P.M.
WELD COUNTY, COLORADO

PDOP = 1.2

NAD 83 (SURFACE LOCATION)	
LATITUDE	40°19'20.94" (40.322883)
LONGITUDE	104°49'45.40" (104.828722)
NAD 27 (SURFACE LOCATION)	
LATITUDE	40°19'21.00" (40.322900)
LONGITUDE	104°49'41.50" (104.828194)

NAD 83 (ENTRY POINT)	
LATITUDE	40°19'19.18" (40.321994)
LONGITUDE	104°49'52.94" (104.831372)
NAD 27 (ENTRY POINT)	
LATITUDE	40°19'19.25" (40.322014)
LONGITUDE	104°49'51.05" (104.830847)

NAD 83 (TARGET BOTTOM HOLE)	
LATITUDE	40°19'19.47" (40.322075)
LONGITUDE	104°49'51.05" (104.830847)
NAD 27 (TARGET BOTTOM HOLE)	
LATITUDE	40°19'19.47" (40.322075)
LONGITUDE	104°49'51.05" (104.830847)

CERTIFICATE OF RECORDING
THIS IS TO CERTIFY THAT THE ABOVE
NOTES OF ACTUAL SURVEYS MADE
AND THAT THE SAME ARE TRUE AND
KNOWLEDGE AND BELIEF.

REGISTERED LAND SURVEYOR
RECEIVED
STATE OF COLORADO
JAN 14 2014