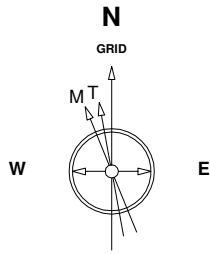


Great Western Operating Company, LLC

Location Colorado
Field Wattenberg
Installation Schneider - South

Slot Slot #09
Well Schneider HD 11-329HN
Wellbore Schneider HD 11-329HN (PWB)

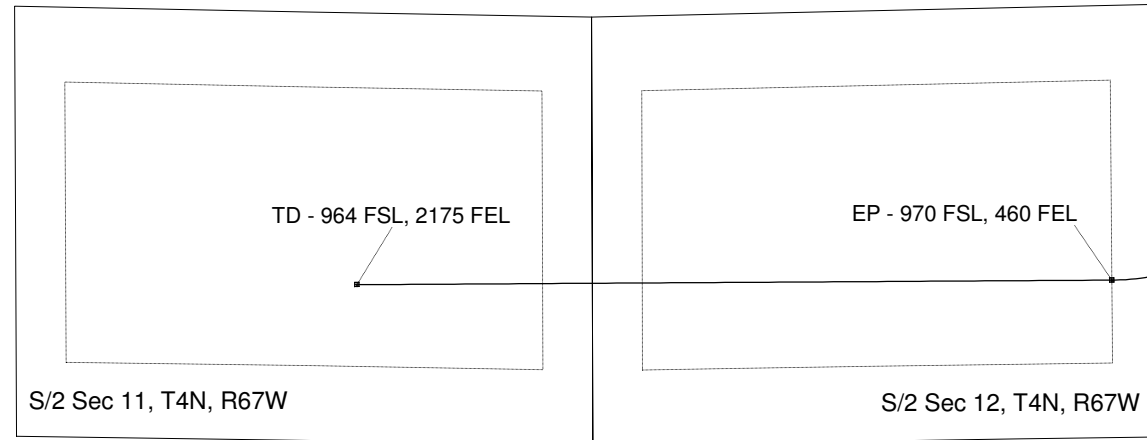


22-Jul-2014
IGRF Model [1900.0-2015.0] Dip: -29.72 deg Field: 32220.6 nT
Magnetic North is 4.47 deg West of True North
GRID North is 0.43 deg East of True North
To correct azimuth from True to GRID subtract 0.43 deg
To correct azimuth from Magnetic to GRID subtract 4.91 deg

Scale 1 cm = 375 ft

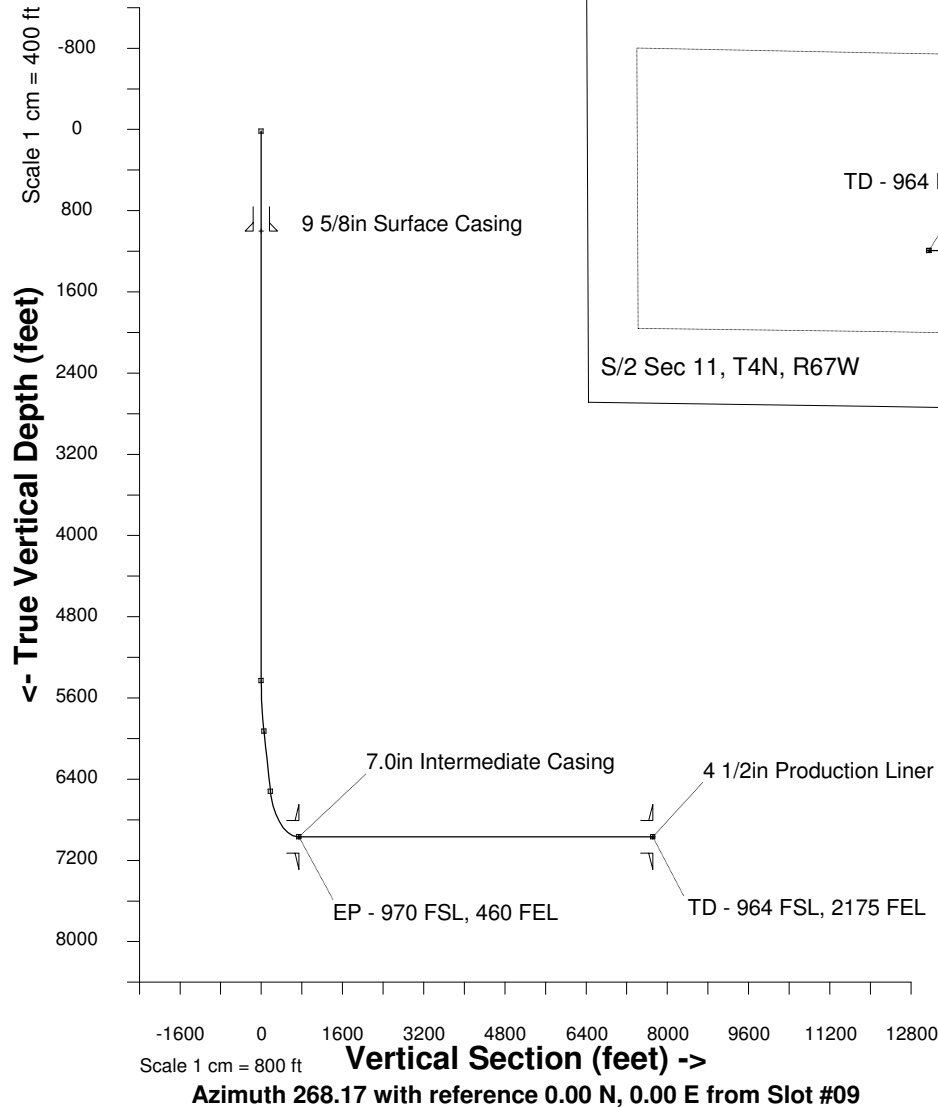
East (feet) ->

-11250 -10500 -9750 -9000 -8250 -7500 -6750 -6000 -5250 -4500 -3750 -3000 -2250 -1500 -750 0 750 1500



<- North(feet)

Scale 1 cm = 250 ft



WELL PROFILE DATA

Point	MD	Inc	Azi	TVD	North	East	deg/100ft	V. Sect
Tie on	16.20	0.00	0.00	16.20	0.00	0.00	0.00	-0.00
KOP	5430.00	0.00	0.00	5430.00	0.00	0.00	0.00	-0.00
End of Build	5934.88	15.15	231.49	5929.02	-41.31	-51.91	3.00	53.21
End of Hold	6545.92	15.15	231.49	6518.83	-140.73	-176.84	0.00	181.25
Target EP - 970 FSL, 4	7327.56	90.00	269.77	6968.00	-218.33	-737.30	10.00	743.91
T.D. & Target TD - 964	14299.53	90.00	269.77	6968.00	-246.60	-7709.21	0.00	7713.16

Created by admin
Date plotted 20-Nov-2014
Plot reference is Schneider HD 11-329HN (PWB).
Ref wellpath is Schneider HD 11-329HN (PWP#1).
Coordinates are in feet reference Slot #09.
True Vertical Depths are reference Rig Datum.
Measured Depths are reference Rig Datum.
Rig Datum: Planned Datum #1
Rig Datum to Mean Sea Level: 4751.30 ft.
Plot North is aligned to GRID North.