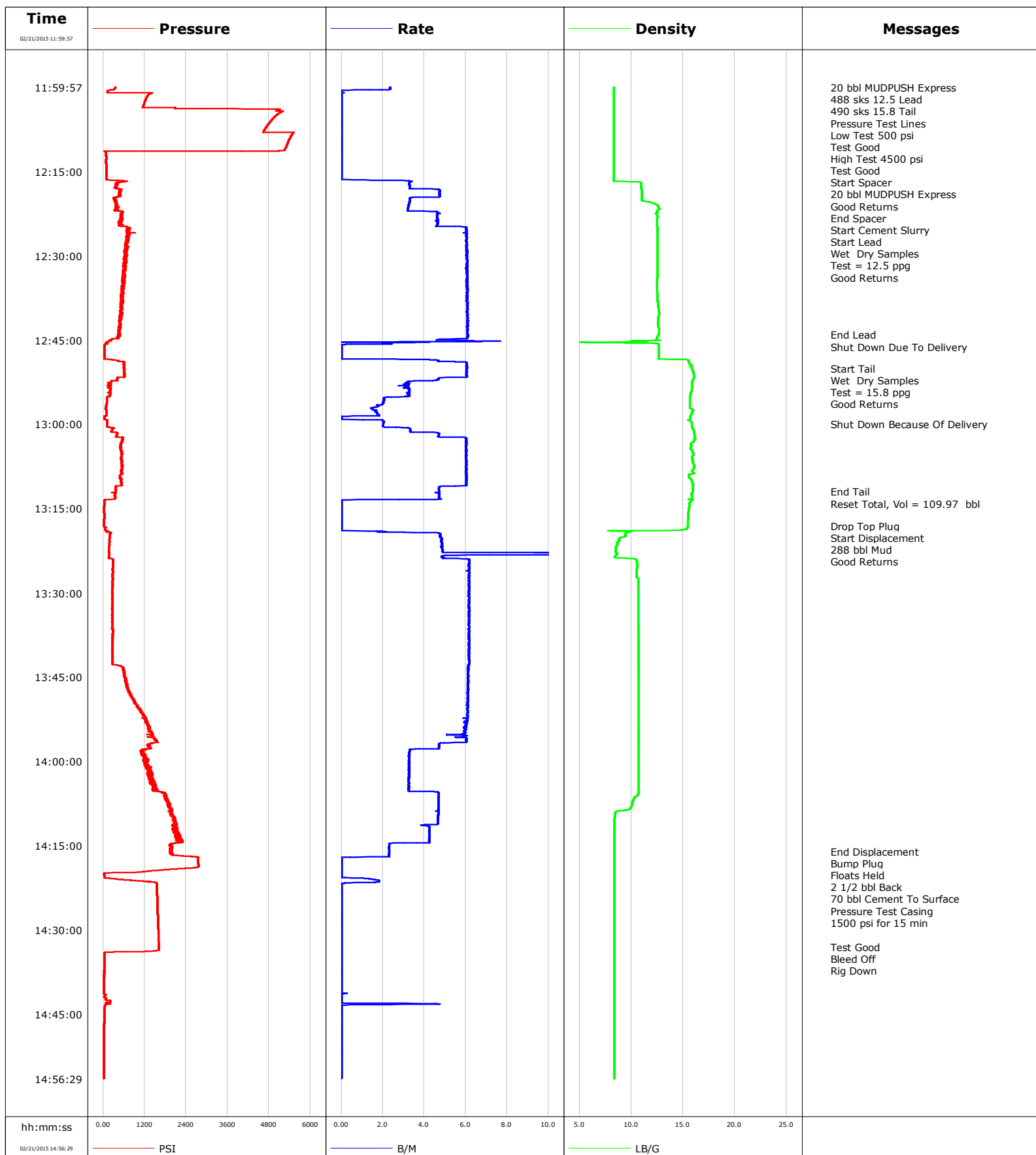


Well WAAG 5-5
Field Wattenberg
Engineer Jordan Moreland / Stacy Terry
Country

Client Extraction
SIR No. D2IK-00672
Job Type 7" Intermediate
Job Date



Cementing Service Report

				Customer Extraction				Job Number D2IK-00672			
Well WAAG 5-5			Location (legal)			Schlumberger Location			Job Start Feb/21/2015		
Field Wattenberg		Formation Name/Type		Deviation deg		Bit Size 8.8 in		Well MD ft		Well TVD ft	
County Weld		State/Province Colorado		BHP psi		BHST degF		BHCT degF		Pore Press. Gradient lb/gal	
Well Master		API/UWI									
Rig Name Xtreme 7		Drilled For Oil		Service Via Land		Casing/ Liner					
						Depth, ft		Size, in		Weight, lb/ft	
Offshore Zone		Well Class New		Well Type Development		7579.0		7.0		26.0	
						0.0		0.0		0.0	
Drilling Fluid Type		Max. Density lb/gal		Plastic Viscosity cP		Tubing/Drill Pipe					
						T/D		Depth, ft		Size, in	
Service Line Cementing		Job Type 7" Intermediate									
Max. Allowed Tub. Press psi		Max. Allowed Ann. Press psi		WH Connection Single Cement head		Perforations/Open Hole					
						Top, ft		Bottom, ft		shot/ft	
						ft		ft			
						ft		ft			
						Treat Down Casing		Displacement 288.0 bbl		Packer Type	
										Packer Depth ft	
						Tubing Vol. bbl		Casing Vol. 290.0 bbl		Annular Vol. 205.0 bbl	
										Openhole Vol. 564.0 bbl	
Casing/Tubing Secured <input checked="" type="checkbox"/>		1 Hole Vol. Circulated prior to Cement <input checked="" type="checkbox"/>		Casing Tools				Squeeze Job			
Lift Pressure psi				Shoe Type Float				Squeeze Type			
Pipe Rotated <input type="checkbox"/>		Pipe Reciprocated <input type="checkbox"/>		Shoe Depth 7579.0 ft				Tool Type			
No. Centralizers		Top Plugs 1		Bottom Plugs		Stage Tool Type				Tool Depth ft	
Cement Head Type Single						Stage Tool Depth ft				Tail Pipe Size in	
Job Scheduled For Feb/21/2015		Arrived on Location Feb/21/2015		Leave Location Feb/21/2015		Collar Type Float				Tail Pipe Depth ft	
						Collar Depth 7535.0 ft				Sqz. Total Vol. bbl	
Date	Time 24-hr clock	Treating Pressure PSI	Flow Rate B/M	Density LB/G	Volume BBL	Message					
02/21/2015	11:59:57	366	2.3	8.33	0.0	Started Acquisition					
02/21/2015	12:00:00	360	2.4	8.33	0.1	20 bbl MUDPUSH Express					
02/21/2015	12:01:57	1247	0.0	8.33	0.0						
02/21/2015	12:03:57	5107	0.0	8.33	0.0						
02/21/2015	12:05:57	4859	0.0	8.33	0.0						
02/21/2015	12:07:57	4639	0.0	8.33	0.0						
02/21/2015	12:09:57	5338	0.0	8.33	0.0						
02/21/2015	12:11:57	79	0.0	8.33	0.0						
02/21/2015	12:12:00	79	0.0	8.33	0.0	Start Spacer					
02/21/2015	12:13:57	90	0.0	8.33	0.0						
02/21/2015	12:15:57	92	0.0	8.33	0.0						
02/21/2015	12:17:57	391	3.3	10.98	4.7						
02/21/2015	12:19:57	364	3.3	10.99	13.4						
02/21/2015	12:21:00	369	3.2	12.55	16.9	End Spacer					
02/21/2015	12:21:57	383	3.2	12.50	19.9						
02/21/2015	12:22:00	342	3.2	12.46	20.1	Start Cement Slurry					
02/21/2015	12:23:57	513	4.6	12.49	29.0						
02/21/2015	12:25:57	732	6.1	12.53	39.9						
02/21/2015	12:27:57	663	6.1	12.53	52.0						
02/21/2015	12:29:57	616	6.1	12.53	64.1						
02/21/2015	12:31:57	627	6.1	12.53	76.3						

Well			Field	Job Start		Customer	Job Number	
WAAG 5-5			Wattenberg		Feb/21/2015		Extraction	D2IK-00672
Date	Time 24-hr clock	Treating Pressure PSI	Flow Rate B/M	Density LB/G	Volume BBL	Message		
02/21/2015	12:35:57	576	6.1	12.51	100.5			
02/21/2015	12:37:57	578	6.1	12.55	112.7			
02/21/2015	12:39:57	498	6.1	12.65	124.8			
02/21/2015	12:41:57	496	6.1	12.59	137.0			
02/21/2015	12:43:57	478	6.1	12.65	149.2			
02/21/2015	12:44:00	430	6.1	12.64	149.5	End Lead		
02/21/2015	12:45:00	227	5.3	12.78	155.3	Shut Down Due To Delivery		
02/21/2015	12:45:57	40	0.0	12.64	158.2			
02/21/2015	12:47:57	40	0.0	12.65	158.2			
02/21/2015	12:49:57	597	6.1	15.82	166.8			
02/21/2015	12:50:00	600	6.0	15.83	167.1	Start Tail		
02/21/2015	12:51:57	413	4.7	15.99	178.6			
02/21/2015	12:53:57	203	3.3	15.86	185.4			
02/21/2015	12:55:57	103	2.0	15.65	190.9			
02/21/2015	12:57:57	95	1.7	15.86	194.4			
02/21/2015	12:59:57	112	2.0	15.84	197.0			
02/21/2015	13:00:00	111	2.0	15.84	197.1	Shut Down Because Of Delivery		
02/21/2015	13:01:57	397	4.7	16.11	203.6			
02/21/2015	13:03:57	505	6.0	15.76	215.2			
02/21/2015	13:05:57	535	6.0	15.83	227.3			
02/21/2015	13:07:57	538	6.0	15.99	239.3			
02/21/2015	13:09:57	518	6.1	15.81	251.4			
02/21/2015	13:11:57	365	4.7	15.92	262.2			
02/21/2015	13:12:00	347	4.7	15.91	262.4	End Tail		
02/21/2015	13:13:25	47	0.8	15.97	269.0	Reset Total, Vol = 109.97 bbl		
02/21/2015	13:13:57	31	0.0	15.65	269.0			
02/21/2015	13:15:57	40	0.0	15.51	269.0			
02/21/2015	13:17:57	27	0.0	15.44	269.0			
02/21/2015	13:18:00	27	0.0	15.44	269.0	Drop Top Plug		
02/21/2015	13:19:57	192	4.8	9.41	272.9			
02/21/2015	13:21:57	167	4.8	8.50	282.6			
02/21/2015	13:23:57	268	6.1	10.38	298.0			
02/21/2015	13:25:57	274	6.2	10.53	310.4			
02/21/2015	13:27:57	282	6.1	10.67	322.7			
02/21/2015	13:29:57	264	6.1	10.67	335.0			
02/21/2015	13:31:57	264	6.2	10.69	347.3			
02/21/2015	13:33:57	257	6.2	10.69	359.6			
02/21/2015	13:35:57	265	6.2	10.69	371.9			
02/21/2015	13:37:57	271	6.2	10.69	384.3			
02/21/2015	13:39:57	275	6.2	10.69	396.6			
02/21/2015	13:41:57	270	6.2	10.69	408.9			
02/21/2015	13:43:57	589	6.1	10.70	421.2			
02/21/2015	13:45:57	646	6.1	10.70	433.4			
02/21/2015	13:47:57	767	6.1	10.71	445.6			
02/21/2015	13:49:57	997	6.1	10.70	457.8			
02/21/2015	13:51:57	1182	6.1	10.70	470.0			
02/21/2015	13:53:57	1294	5.9	10.70	482.1			
02/21/2015	13:55:57	1516	6.0	10.70	493.9			
02/21/2015	13:57:57	1235	3.3	10.67	504.1			
02/21/2015	13:59:57	1307	3.3	10.70	510.7			
02/21/2015	14:01:57	1383	3.3	10.70	517.2			
02/21/2015	14:03:57	1520	3.3	10.71	523.7			
02/21/2015	14:05:57	1809	4.7	10.64	531.1			
02/21/2015	14:07:57	1869	4.7	10.02	540.5			

Well WAAG 5-5			Field Wattenberg		Job Start Feb/21/2015	Customer Extraction		Job Number D2IK-00672
Date	Time 24-hr clock	Treating Pressure PSI	Flow Rate B/M	Density LB/G	Volume BBL	Message		
02/21/2015	14:11:57	2001	4.2	8.39	558.8			
02/21/2015	14:13:57	2192	4.3	8.36	567.3			
02/21/2015	14:15:57	1972	2.3	8.36	573.0			
02/21/2015	14:16:00	1950	2.3	8.36	573.2	End Displacement		
02/21/2015	14:17:00	2693	2.2	8.36	575.5	1500 psi for 15 min		
02/21/2015	14:17:57	2752	0.0	8.36	575.6			
02/21/2015	14:19:57	29	0.0	8.36	575.6			
02/21/2015	14:21:57	1557	0.0	8.36	576.9			
02/21/2015	14:23:57	1565	0.0	8.36	576.9			
02/21/2015	14:25:57	1573	0.0	8.36	576.9			
02/21/2015	14:27:57	1582	0.0	8.36	576.9			
02/21/2015	14:29:57	1594	0.0	8.36	576.9			
02/21/2015	14:31:57	1607	0.0	8.37	576.9			
02/21/2015	14:33:00	1610	0.0	8.37	576.9	Test Good		
02/21/2015	14:33:57	257	0.0	8.37	576.9			
02/21/2015	14:35:57	30	0.0	8.37	576.9			
02/21/2015	14:37:57	29	0.0	8.37	576.9			
02/21/2015	14:39:57	28	0.0	8.37	576.9			
02/21/2015	14:41:57	36	0.0	8.37	576.9			
02/21/2015	14:43:57	38	0.0	8.37	577.9			
02/21/2015	14:45:57	29	0.0	8.37	577.9			
02/21/2015	14:47:57	28	0.0	8.37	577.9			
02/21/2015	14:49:57	27	0.0	8.36	577.9			
02/21/2015	14:51:57	27	0.0	8.36	577.9			
02/21/2015	14:53:57	27	0.0	8.36	577.9			

Post Job Summary

Average Pump Rates, bbl/min					Volume of Fluid Injected, bbl						
Slurry	N2	Mud	Maximum Rate		Total Slurry	Mud	Spacer	N2			
Treating Pressure Summary, psi					Breakdown Fluid						
Maximum	Final 0	Average	Bump Plug to	Breakdown	Type	Volume bbl		Density lb/gal			
Avg. N2 Percent %	Designed Slurry Volume 0.0 bbl		Displacement bbl	Mix Water Temp 72 degF	Cement Circulated to Surface?		<input checked="" type="checkbox"/>	Volume bbl			
					Washed Thru Perfs		<input type="checkbox"/>	To ft			
Customer or Authorized Representative			Schlumberger Supervisor Jordan Moreland / Stacy Terry			Circulation Lost		Job Completed <input checked="" type="checkbox"/>			
						-		-			