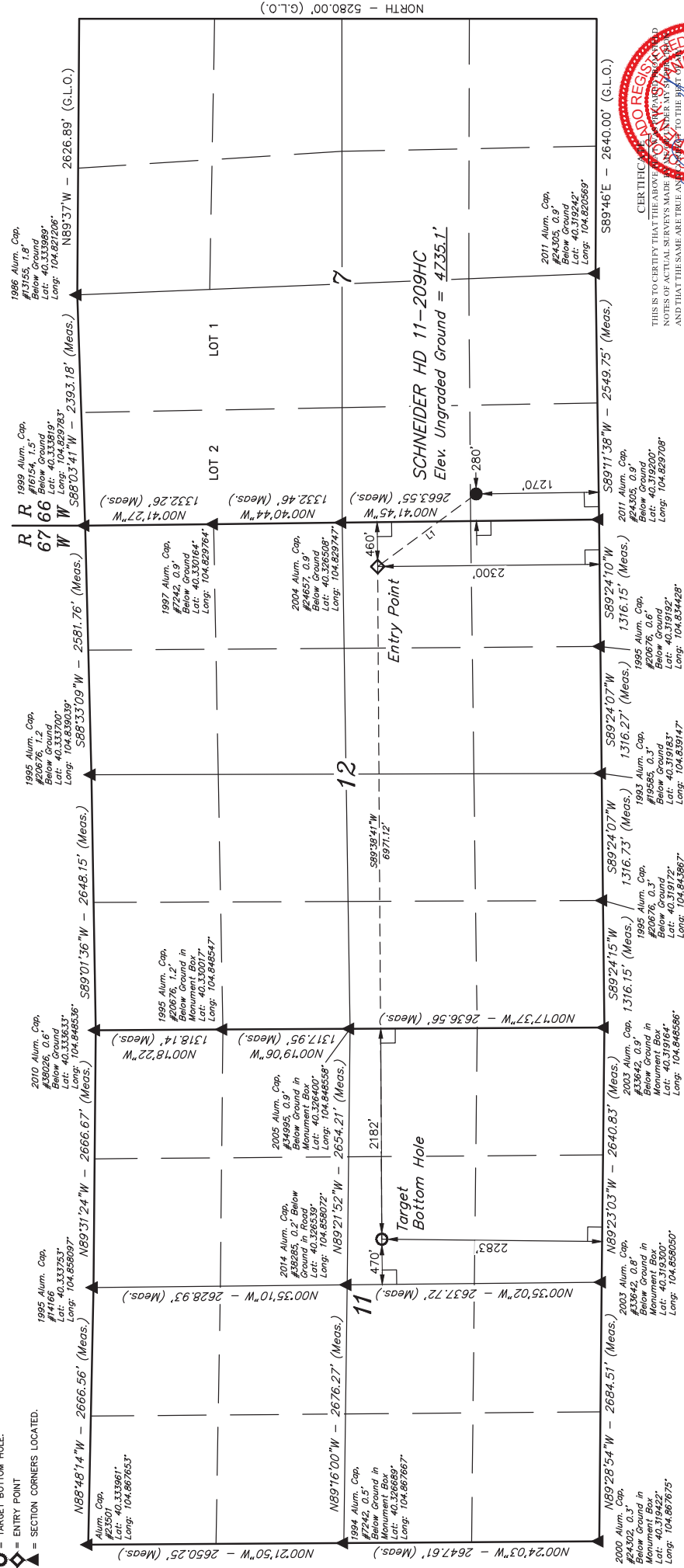


T4N, R66W, 6th P.M.

LEGEND:

- 90° SYMBOL
- PROPOSED WELLHEAD.
- TARGET BOTTOM HOLE.
- ENTRY POINT
- SECTION CORNERS LOCATED.



CERTIFICATE TO REGISTER THIS SURVEY WITH THE COUNTY CLERK OF WELD COUNTY, COLORADO, FOR THE PURPOSE OF RECORDING THE SAME. THIS IS TO CERTIFY THAT THE ABOVE SURVEY WAS MADE BY ME OR UNDER MY CLOSE PERSONAL SUPERVISION AND THAT THE SAME ARE TRUE AND CORRECT TO THE BEST OF MY KNOWLEDGE AND BELIEF.

LINE TABLE		
LINE	DIRECTION	LENGTH
L1	N36°23'30\"W	1288.30'



BASIS OF BEARINGS
BASIS OF ELEVATION

USGS COOPERATIVE BASE NETWORK CONTROL STATION.
DESIGNATION "VERMILYEA", NGS DATA SHEET LISTS THE
NAVD 88 ELEVATION AS BEING 5026 FEET.

GREAT WESTERN OIL & GAS COMPANY
SCHNEIDER HD 11-209HC
SW 1/4 SW 1/4 SECTION 7, T4N, R66W, 6th P.M.
WELD COUNTY, COLORADO

PDOP = 1.2

SURVEYED BY: J.W.	DATE: 08-18-14
DRAWN BY: J.W.	DATE: 08-18-14
SCALE: 1" = 1000'	REVISED: 10-16-14

NAD 83 (SURFACE LOCATION)	
LATITUDE	40°19'21.68" (40.322689)
LONGITUDE	104°49'45.40" (104.828722)
NAD 27 (SURFACE LOCATION)	
LATITUDE	40°19'21.75" (40.322708)
LONGITUDE	104°49'41.51" (104.828197)

NAD 83 (ENTRY POINT)	
LATITUDE	40°19'31.83" (40.325508)
LONGITUDE	104°49'53.01" (104.831392)
NAD 27 (ENTRY POINT)	
LATITUDE	40°19'31.89" (40.325535)
LONGITUDE	104°49'51.11" (104.830844)

NAD 83 (TARGET BOTTOM HOLE)	
LATITUDE	40°19'31.95" (40.325542)
LONGITUDE	104°51'22.99" (104.856386)
NAD 27 (TARGET BOTTOM HOLE)	
LATITUDE	40°19'32.01" (40.325558)
LONGITUDE	104°51'21.09" (104.855858)

UELS, LLC
Corporate Office: 85 South 200 East
Vernal, UT 84078 • (435) 789-1017

