

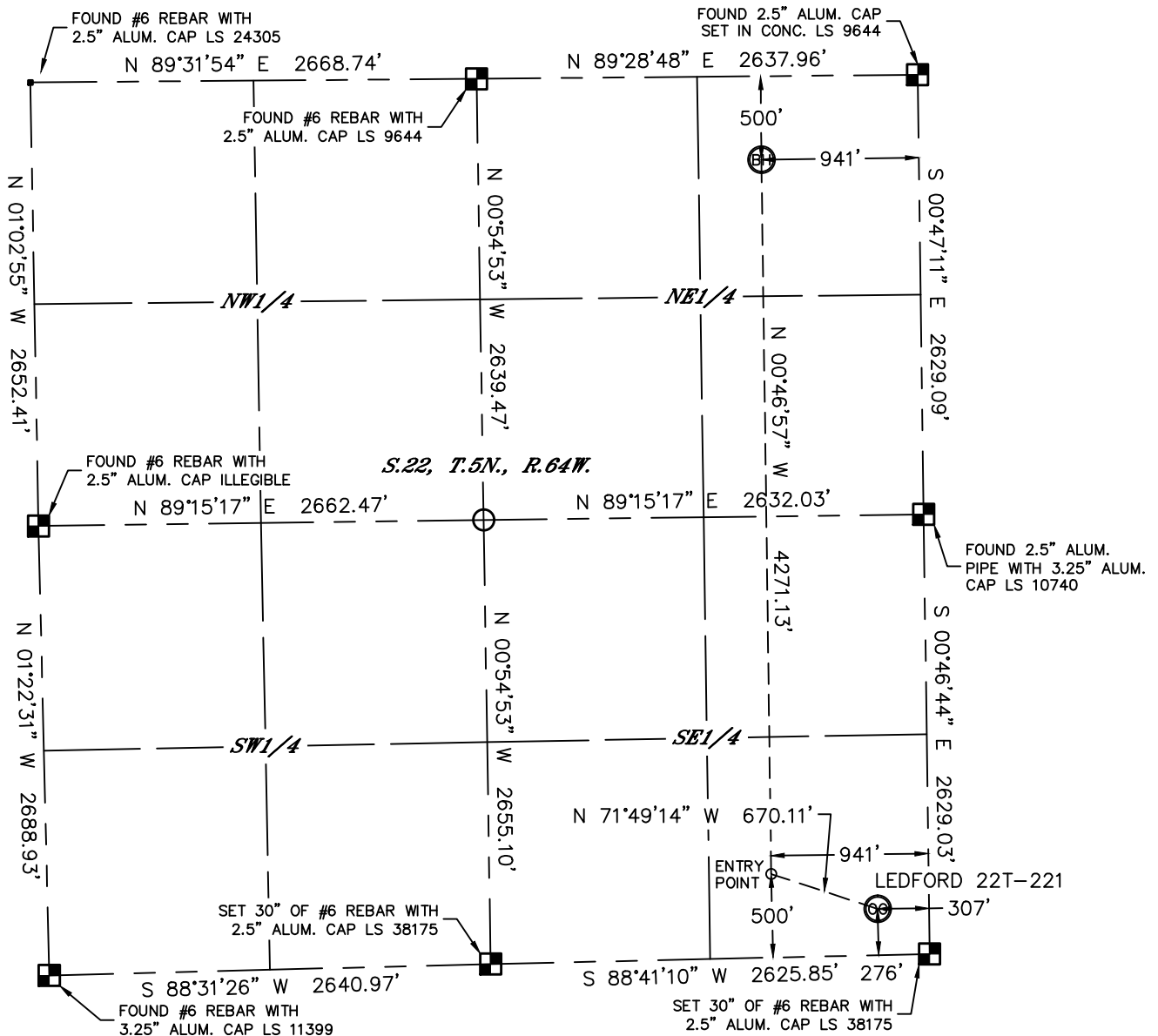


Lat40°, Inc. 6250 W. 10th Street, Unit 2, Greeley, CO 970-515-5294

WELL LOCATION CERTIFICATE

THIS MAP DOES NOT REPRESENT A BOUNDARY SURVEY

SECTION: 22
TOWNSHIP: 5N
RANGE: 64W



In accordance with a request from Jake Bragg with PDC ENERGY Lat40°, Inc. has determined the surface location of the LED FORD 22T-221 to be 276' from the SOUTH line and 307' from the EAST line and the bottom hole to be 500' from the NORTH line and 941' from the EAST line as measured at right angles from the section lines of Section 22, Township 5 North, Range 64 West of the Sixth Principal Meridian, County of Weld, State of Colorado.

I hereby state that this Well Location Certificate was prepared by me, or under my direct supervision, that the fieldwork was completed on 12/13/2013, for and on behalf of PDC ENERGY. That this is not a Land Survey Plat or an Improvement Survey Plat, and that it is not to be relied upon for establishment of fence, building, or other future improvement lines.

SURFACE LOCATION

LAT: 40.37839°N
LONG: 104.52747°W
PDOP: 2.0
ELEV: 4598'
1/4,1/4: SE1/4SE1/4

BOTTOM HOLE

LAT: 40.39071°N
LONG: 104.52979°W
1/4,1/4: NE1/4NE1/4

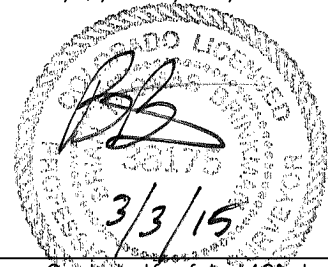
ENTRY POINT

LAT: 40.37898°N
LONG: 104.52975°W
1/4,1/4: SE1/4SE1/4

LEGEND

- = ALIQUOT MONUMENT AS DESCRIBED
- = CALCULATED POSITION

Brian T. Brinkman—On behalf of Lat40°, Inc.
Colorado Licensed Professional
Land Surveyor No. 38175
DATE: 3/3/2015
PROJECT#: 2013182



NOTE:

- 1) Bearings shown are Grid Bearings of the Colorado State Plane Coordinate System, North Zone, North American Datum 1983/2007. The lineal dimensions as contained herein are based upon the "U.S. Survey Foot."
- 2) Ground elevations are based on an observed GPS elevation (NAVD 1988 DATUM).
- 3) IMPROVEMENTS: See LOCATION DRAWING for all visible improvements within 500' of disturbed area.
- 4) SURFACE USE: CROPLAND
- 5) INSTRUMENT OPERATOR: BRIAN ROTTINGHAUS
- 6) NEAREST CULTURAL ITEMS:
BUILDING: 520' SE
BUILDING UNIT: 520' SE
HIGH OCCUPANCY BUILDING UNIT: 5280'+
DESIGNATED OUTSIDE ACTIVITY AREA: 5280'+
PUBLIC ROAD: COUNTY ROAD 54, 268' S
ABOVEGROUND UTILITY: 243' S
RAILROAD: ±2085' NE
PROPERTY LINE: 276' S

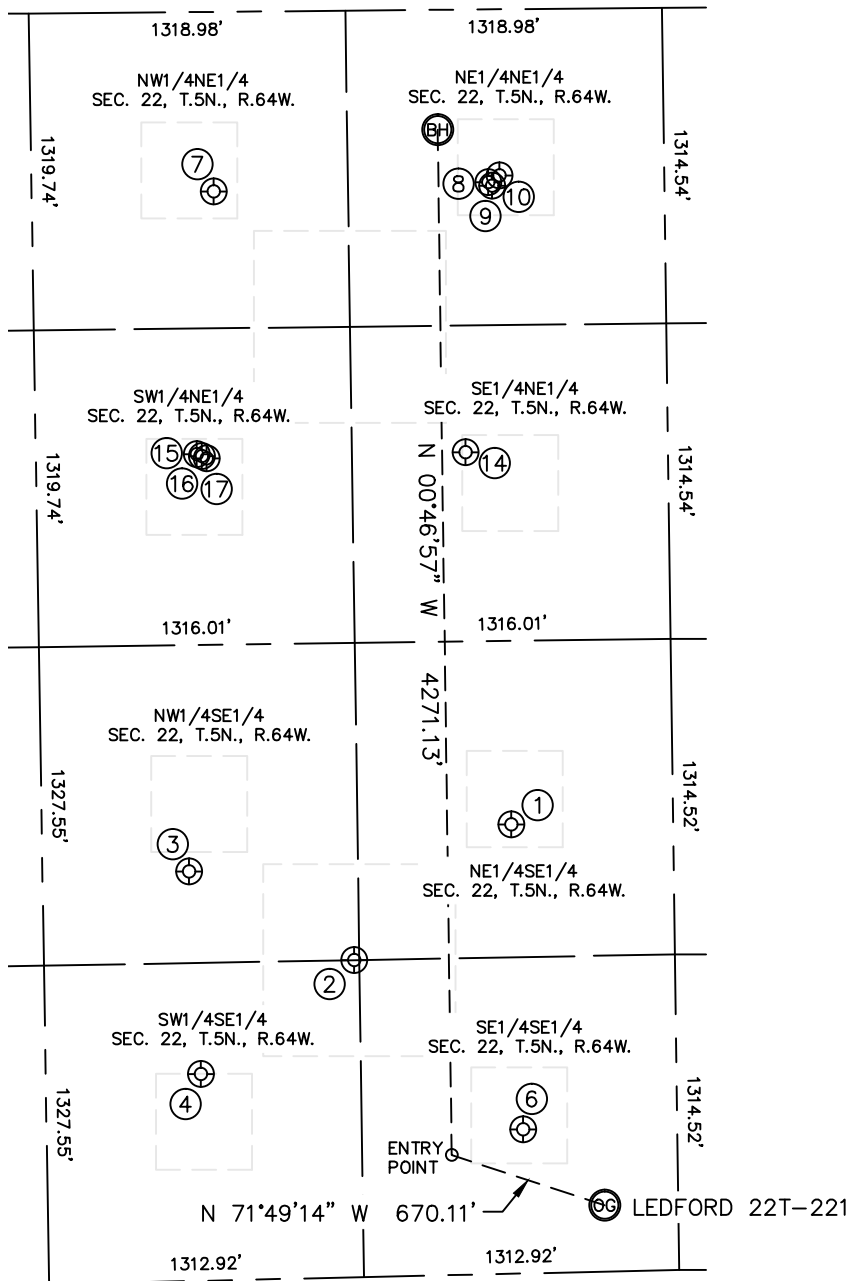


Lat40°, Inc. 6250 W. 10th Street, Unit 2, Greeley, CO 970-515-5294

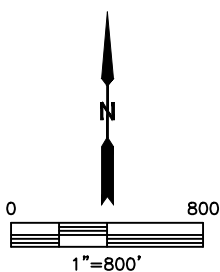
SITE SKETCH

LEDFORD 22T-221

SECTION: 22
TOWNSHIP: 5N
RANGE: 64W



WELL NO.	WELL NAME	SHL FOOTAGE			ELEV (FT.)	SHL LAT°	SHL LONG°	PDOP	1/4/1/4
1	EMANCIPATOR 22-9	1871	FSL	674	FEL	4603	40.38275	-104.52881	2.0
2	EMANCIPATOR B 22-23	1321	FSL	1337	FEL	4601	40.38122	-104.53118	1.9
3	EMANCIPATOR 22-10	1705	FSL	2020	FEL	4604	40.38226	-104.53363	1.7
4	EMANCIPATOR 22-15	861	FSL	1981	FEL	4603	40.37994	-104.53349	1.6
6	EMANCIPATOR 22-16	599	FSL	642	FEL	4600	40.37927	-104.52868	1.5
7	TROY 1	749	FNL	1878	FEL	4575	40.39003	-104.53315	1.6
8	DOUGHMAN 22RD	720	FNL	734	FEL	4574	40.39010	-104.52905	1.6
9	DOUGHMAN 22VD	735	FNL	718	FEL	4574	40.39006	-104.52899	1.6
10	LUCAS 1	692	FNL	686	FEL	4573	40.39018	-104.52888	1.7
14	P & H 22-42	1845	FNL	843	FEL	4580	40.38702	-104.52943	2.7
15	P & H 22CD	1842	FNL	1964	FEL	4604	40.38703	-104.53345	3.9
16	P & H 22SD	1850	FNL	1943	FEL	4604	40.38700	-104.53337	3.9
17	P & H 22-32	1860	FNL	1922	FEL	4603	40.38698	-104.53330	3.8



DATE: 3/3/2015
PROJECT#: 2013182