

LEGEND:

 **PROPOSED LOCATION**

ConocoPhillips Company

**B&D LAND #4-64 4-1H & 3-1H
SECTION 4, T4S, R64W, 6th P.M.
SE 1/4 SE 1/4**



UELS, LLC
Corporate Office * 85 South 200 East
Vernal, UT 84078 * (435) 789-1017



DRAWN BY: T.W.

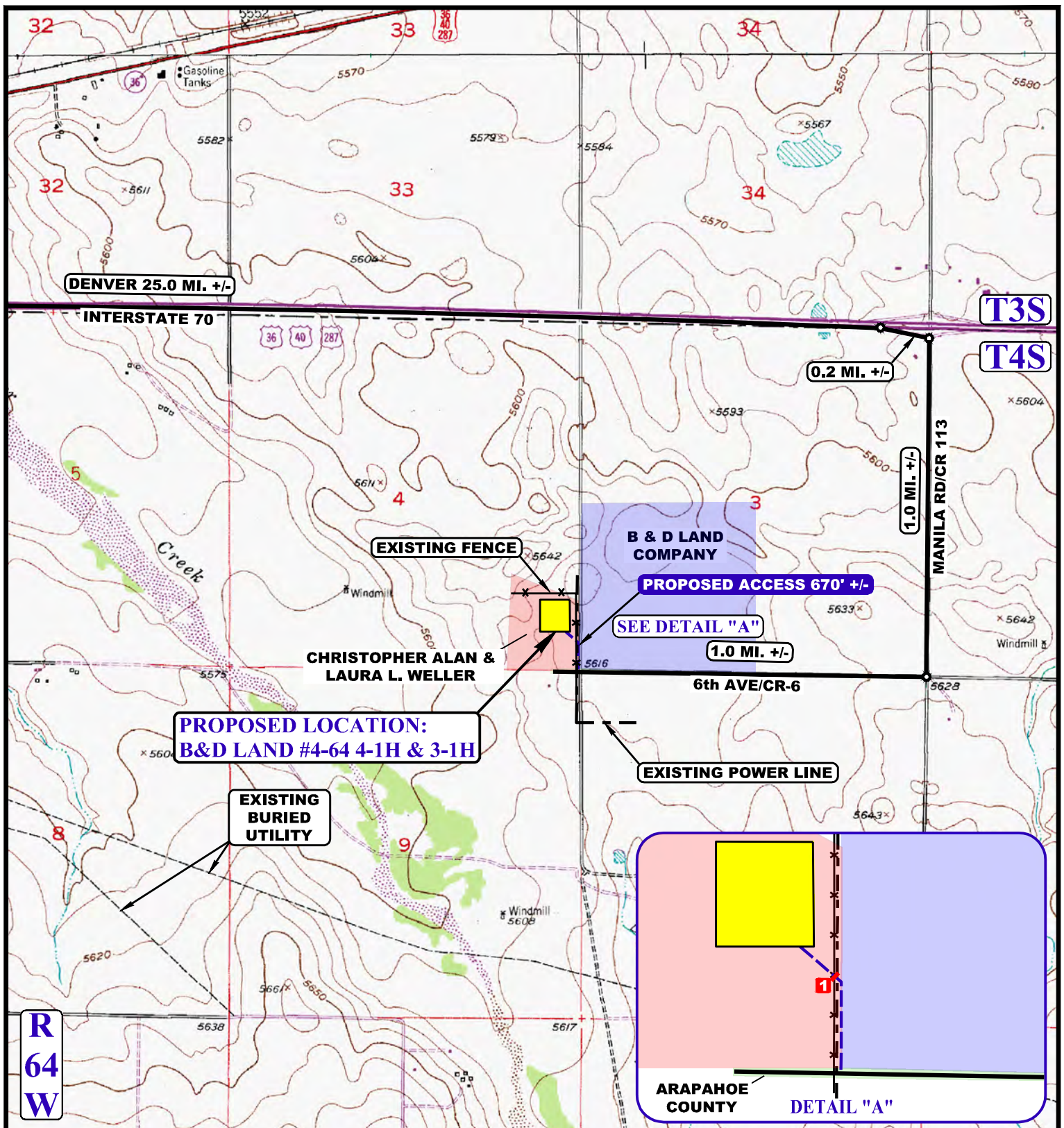
DATE DRAWN: 06-26-14

SCALE: 1:100,000

REVISED: 00-00-00

ACCESS ROAD MAP

TOPO A



NOTE: PARCEL DATA SHOWN HAS BEEN OBTAINED FROM VARIOUS SOURCES AND SHOULD BE USED FOR MAPPING, GRAPHIC AND PLANNING PURPOSES ONLY. NO WARRANTY IS MADE BY UINTAH ENGINEERING AND LAND SURVEYING (UELS) FOR ACCURACY OF THE PARCEL DATA.

LEGEND:

- EXISTING ROAD
- - - PROPOSED ROAD
- - - EXISTING POWER LINE
- x - EXISTING FENCE
- 1 CATTLE GUARD REQUIRED



UELS, LLC
Corporate Office * 85 South 200 East
Vernal, UT 84078 * (435) 789-1017



ConocoPhillips Company

B&D LAND #4-64 4-1H & 3-1H
SECTION 4, T4S, R64W, 6th P.M.
SE 1/4 SE 1/4

DRAWN BY: T.W.

DATE DRAWN: 06-26-14

SCALE: 1" = 2000'

REVISED: 00-00-00

ACCESS ROAD MAP

TOPO B