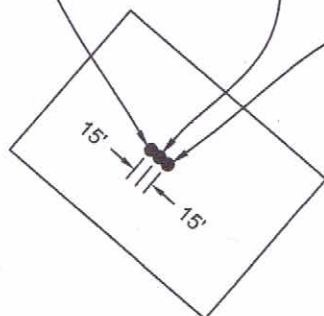


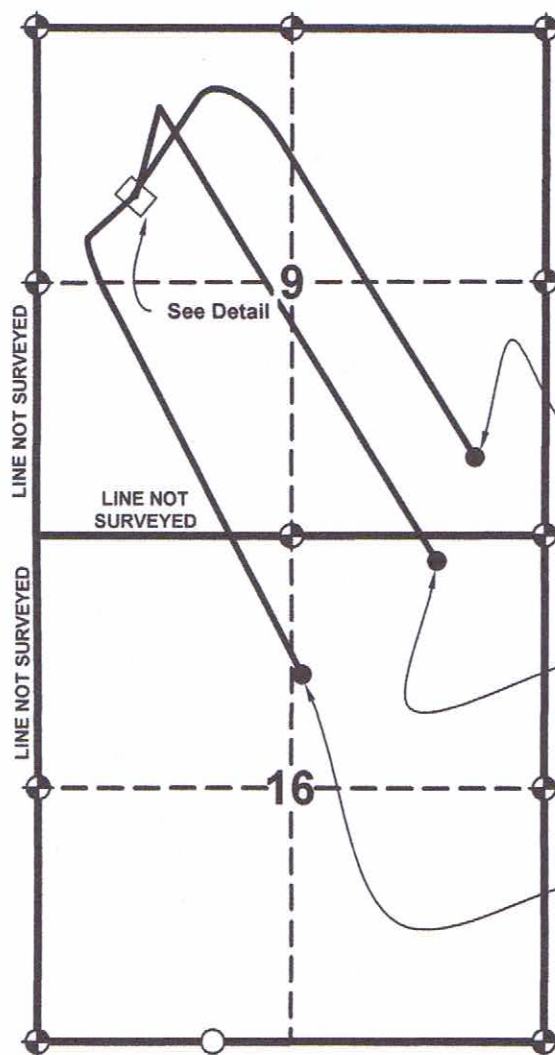
Federal 11-90-09 #5
Surface Location
39.11690° N
107.45833° W
1744 FNL
1004 FWL

Federal 11-90-09 #4
Surface Location
39.11687° N
107.45829° W
1754 FNL
1016 FWL

Federal 11-90-09 #3
Surface Location
39.11683° N
107.45825° W
1764 FNL
1027 FWL



SURFACE LOCATION DETAIL:
Not to Scale

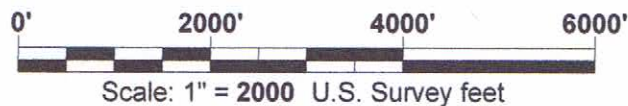


Federal 11-90-09 #5
Bottom Hole
39.10942° N
107.44579° W
811 FSL
730 FEL

Federal 11-90-09 #3
Bottom Hole
39.10660° N
107.44690° W
209 FNL
1043 FEL

Federal 11-90-09 #4
Bottom Hole
39.10320° N
107.45212° W
1445 FNL
2529 FEL

Witness Corner 812.0'



LEGEND

- ◆ ~ FOUND ORIGINAL STONE
- ~ FOUND GLO BRASS CAP ON STEEL POST
- ⊕ ~ FOUND REBAR AND CAP BY LS15710
- ~ FOUND No.6 REBAR WITH A 2 1/2" ALUMINUM CAP, LS24963
- ~ WELL FEATURE



MULTI WELL LOCATION PLAT

FEDERAL 11-90-09 #3 - 5
Located in the NW 1/4 of Section 9,
Township 11 South, Range 90 West, 6th P.M.,
Gunnison County, Colorado

SURVEYED BY:
DGN

DWG DATE:
02/23/2015

DRAFTED BY:
MLD

SCALE:
1" = 2000'

David G. Nicewicz, PLS

cell: (720) 456-1104
david.nicewicz@urs.com

AECOM
804 Colorado Ave, Suite 201
Glenwood Springs Co 81610