



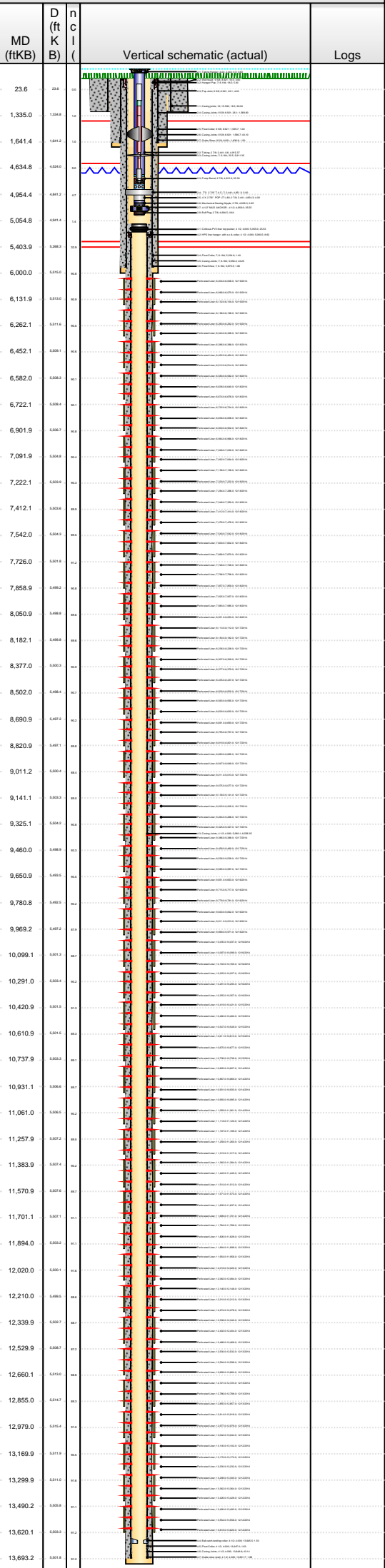
Lease Review All - Frac Summary

Well Name: HORSETAIL 29G-2012B

API Number 051233880400	WPC ID 1CO0761129	Well Permit Number	Field Name Wildcat	County Weld	State CO
Well Configuration Type Lateral/Horizontal	Orig KB Elv (ft) 4,712.50	Ground Elevation (ft) 4,694.00	Casing Flange Elevation (ft)	Tubing Head Elevation (ft)	Total Depth (ftKB) 13,700.0
Original Spud Date 10/19/2014	Completion Date 12/19/2014	Asset Group Redtail	Responsible Engineer Charles Ohlson	N/S Dist (ft) 2,328.0	N/S Ref FNL
				E/W Dist (ft) 1,888.0	E/W Ref FEL
Lot	Quarter 1 SW	Quarter 2 NE	Quarter 3	Quarter 4	Section 29
					Section Suffix
					Section Type
					Township 10 N
					Township N/S Dir
					Range 57
					Range E/W Dir W
					Meridian

Lateral/Horizontal - Original Hole, 3/6/2015 10:40:15 AM

Wellbore Sections



Wellbore Name	Start Date	Size (in)	Act Top (ftKB)	Act Btm (ftKB)
Original Hole	10/16/2014	24	18.5	108.5
Original Hole	10/19/2014	13 1/2	108.5	1,660.0
Original Hole	10/20/2014	8 3/4	1,660.0	6,000.0
Original Hole	10/23/2014	6	6,000.0	13,700.0

Conductor Pipe, 108.5ftKB						
OD (in)	Wt (lb/ft)	Grade	Top (ftKB)	Btm (ftKB)	Len (ft)	Item Des
16	42.09	J-55	18.5	108.5	90.00	Casing joints

Surface Csg, 1,641.3ftKB						
OD (in)	Wt (lb/ft)	Grade	Top (ftKB)	Btm (ftKB)	Len (ft)	Item Des
9 5/8	36.00	J-55	18.5	18.5	0.00	Landing joint
9 5/8	36.00	J-55	18.5	22.1	3.60	Well head
9 5/8	36.00	J-55	22.1	26.1	4.00	Pup Joint
9 5/8	36.00	J-55	26.1	1,595.7	1,569.60	Casing Joints
9 5/8	36.00	J-55	1,595.7	1,596.7	1.00	Float Collar
9 5/8	36.00	J-55	1,596.7	1,639.8	43.10	Casing Joints
9 5/8	36.00	J-55	1,639.8	1,641.3	1.50	Guide Shoe

Intermediate Csg, 5,981.1ftKB						
OD (in)	Wt (lb/ft)	Grade	Top (ftKB)	Btm (ftKB)	Len (ft)	Item Des
7	29.00	HCL-80	18.5	18.5	0.00	Landing Joint
7	29.00	HCL-80	18.5	23.5	5.00	Hanger/ Pup
7	29.00	P-110	23.5	5,934.9	5,911.35	Casing Joints
7	29.00	HCL-80	5,934.9	5,936.3	1.40	Float Collar
7	29.00	P-110	5,936.3	5,979.5	43.25	Casing Joints
7	29.00	HCL-80	5,979.5	5,981.1	1.60	Float Shoe

Liner, 13,693.4ftKB						
OD (in)	Wt (lb/ft)	Grade	Top (ftKB)	Btm (ftKB)	Len (ft)	Item Des
4 1/2	11.60	P-110	5,055.0	5,080.5	25.53	Colossus PV3 liner top packer
4 1/2	11.60	P-110	5,080.5	5,089.1	8.62	HPS liner hanger with x-o & collar
4 1/2	11.60	P-110	5,089.1	13,645.5	8,556.35	Casing Joints
4 1/2	11.60	P-110	13,645.5	13,647.0	1.50	Ball catch landing collar
4 1/2	11.60	P-110	13,647.0	13,648.6	1.63	Float Collar
4 1/2	11.60	P-110	13,648.6	13,691.7	43.14	Casing Joints
4 1/2	11.60	P-110	13,691.7	13,693.4	1.68	Guide shoe (wet)

Cement Stages					
Des	Pump Start Date	Drill Out Date	Top (ftKB)	Btm (ftKB)	Top Meas Meth
Conductor Cement	10/16/2014		18.5	108.5	Returns to Surface
Surface Casing Cement	10/20/2014		18.5	1,641.3	Returns to Surface
Intermediate Casing Cement	10/22/2014		18.5	5,981.0	Returns to Surface
Liner Cement (wet shoe)	10/29/2014		5,055.0	13,693.4	Volume Calculations

Perforations					
Type of Hole	Date	Top (ftKB)	Btm (ftKB)	Zone	
Perforated Liner	12/19/2014	6,004.0	6,006.0	Niobrara, Original Hole	
Perforated Liner	12/19/2014	6,068.0	6,070.0	Niobrara, Original Hole	
Perforated Liner	12/19/2014	6,132.0	6,134.0	Niobrara, Original Hole	
Perforated Liner	12/19/2014	6,196.0	6,198.0	Niobrara, Original Hole	
Perforated Liner	12/19/2014	6,260.0	6,262.0	Niobrara, Original Hole	
Perforated Liner	12/19/2014	6,324.0	6,326.0	Niobrara, Original Hole	
Perforated Liner	12/18/2014	6,386.0	6,388.0	Niobrara, Original Hole	
Perforated Liner	12/18/2014	6,452.0	6,454.0	Niobrara, Original Hole	
Perforated Liner	12/18/2014	6,512.0	6,514.0	Niobrara, Original Hole	
Perforated Liner	12/18/2014	6,580.0	6,582.0	Niobrara, Original Hole	
Perforated Liner	12/18/2014	6,638.0	6,640.0	Niobrara, Original Hole	
Perforated Liner	12/18/2014	6,674.0	6,676.0	Niobrara, Original Hole	
Perforated Liner	12/18/2014	6,722.0	6,724.0	Niobrara, Original Hole	
Perforated Liner	12/18/2014	6,836.0	6,838.0	Niobrara, Original Hole	
Perforated Liner	12/18/2014	6,900.0	6,902.0	Niobrara, Original Hole	
Perforated Liner	12/18/2014	6,964.0	6,966.0	Niobrara, Original Hole	
Perforated Liner	12/18/2014	7,028.0	7,030.0	Niobrara, Original Hole	
Perforated Liner	12/18/2014	7,092.0	7,094.0	Niobrara, Original Hole	
Perforated Liner	12/18/2014	7,156.0	7,158.0	Niobrara, Original Hole	
Perforated Liner	12/18/2014	7,220.0	7,222.0	Niobrara, Original Hole	
Perforated Liner	12/18/2014	7,284.0	7,286.0	Niobrara, Original Hole	
Perforated Liner	12/18/2014	7,348.0	7,350.0	Niobrara, Original Hole	
Perforated Liner	12/18/2014	7,412.0	7,414.0	Niobrara, Original Hole	
Perforated Liner	12/18/2014	7,476.0	7,478.0	Niobrara, Original Hole	
Perforated Liner	12/18/2014	7,540.0	7,542.0	Niobrara, Original Hole	
Perforated Liner	12/18/2014	7,600.0	7,602.0	Niobrara, Original Hole	



Lease Review All - Frac Summary

Well Name: HORSETAIL 29G-2012B

API Number 051233880400	WPC ID 1CO0761129	Well Permit Number	Field Name Wildcat	County Weld	State CO
Well Configuration Type Lateral/Horizontal	Orig KB Elv (ft) 4,712.50	Ground Elevation (ft) 4,694.00	Casing Flange Elevation (ft)	Tubing Head Elevation (ft)	Total Depth (ftKB) 13,700.0
Original Spud Date 10/19/2014	Completion Date 12/19/2014	Asset Group Redtail	Responsible Engineer Charles Ohlson	N/S Dist (ft) 2,328.0	N/S Ref FNL
				E/W Dist (ft) 1,888.0	E/W Ref FEL
Lot	Quarter 1 SW	Quarter 2 NE	Quarter 3	Quarter 4	Section 29
					Section Suffix
					Section Type
					Township 10 N
					Township N/S Dir
					Range 57
					Range E/W Dir W
					Meridian

Lateral/Horizontal - Original Hole, 3/6/2015 10:40:17 AM **Perforations**

MD (ftKB)	D (ft K B)	n c l	Vertical schematic (actual)	Logs	Type of Hole	Date	Top (ftKB)	Btm (ftKB)	Zone
23.6	0.04	111			Perforated Liner	12/18/2014	7,668.0	7,670.0	Niobrara, Original Hole
1,335.0	1.044	112			Perforated Liner	12/18/2014	7,726.0	7,728.0	Niobrara, Original Hole
1,641.4	1.041	112			Perforated Liner	12/18/2014	7,796.0	7,798.0	Niobrara, Original Hole
4,634.8	4.030	114			Perforated Liner	12/18/2014	7,925.0	7,927.0	Niobrara, Original Hole
4,954.4	4.031	117			Perforated Liner	12/18/2014	7,983.0	7,985.0	Niobrara, Original Hole
5,054.8	4.031	111			Perforated Liner	12/18/2014	8,051.0	8,053.0	Niobrara, Original Hole
5,403.9	4.033	114			Perforated Liner	12/17/2014	8,110.0	8,112.0	Niobrara, Original Hole
6,000.0	5.030	111			Perforated Liner	12/17/2014	8,180.0	8,182.0	Niobrara, Original Hole
6,131.9	5.030	111			Perforated Liner	12/17/2014	8,236.0	8,238.0	Niobrara, Original Hole
6,262.1	5.031	111			Perforated Liner	12/17/2014	8,307.0	8,309.0	Niobrara, Original Hole
6,452.1	5.031	111			Perforated Liner	12/17/2014	8,377.0	8,379.0	Niobrara, Original Hole
6,582.0	5.033	111			Perforated Liner	12/17/2014	8,435.0	8,437.0	Niobrara, Original Hole
6,722.1	5.034	111			Perforated Liner	12/17/2014	8,500.0	8,502.0	Niobrara, Original Hole
6,901.9	5.037	111			Perforated Liner	12/17/2014	8,563.0	8,565.0	Niobrara, Original Hole
7,091.9	5.038	111			Perforated Liner	12/17/2014	8,630.0	8,632.0	Niobrara, Original Hole
7,222.1	5.038	111			Perforated Liner	12/17/2014	8,691.0	8,693.0	Niobrara, Original Hole
7,412.1	5.038	111			Perforated Liner	12/17/2014	8,755.0	8,757.0	Niobrara, Original Hole
7,542.0	5.034	111			Perforated Liner	12/17/2014	8,819.0	8,821.0	Niobrara, Original Hole
7,726.0	5.031	111			Perforated Liner	12/17/2014	8,883.0	8,885.0	Niobrara, Original Hole
7,858.9	5.034	111			Perforated Liner	12/17/2014	8,947.0	8,949.0	Niobrara, Original Hole
8,050.9	5.034	111			Perforated Liner	12/17/2014	9,011.0	9,013.0	Niobrara, Original Hole
8,182.1	5.038	111			Perforated Liner	12/17/2014	9,075.0	9,077.0	Niobrara, Original Hole
8,377.0	5.033	111			Perforated Liner	12/17/2014	9,139.0	9,141.0	Niobrara, Original Hole
8,502.0	5.034	111			Perforated Liner	12/17/2014	9,203.0	9,205.0	Niobrara, Original Hole
8,690.9	5.032	111			Perforated Liner	12/17/2014	9,264.0	9,266.0	Niobrara, Original Hole
8,820.9	5.031	111			Perforated Liner	12/17/2014	9,325.0	9,327.0	Niobrara, Original Hole
9,011.2	5.034	111			Perforated Liner	12/17/2014	9,386.0	9,388.0	Niobrara, Original Hole
9,141.1	5.033	111			Perforated Liner	12/17/2014	9,458.0	9,460.0	Niobrara, Original Hole
9,325.1	5.032	111			Perforated Liner	12/17/2014	9,526.0	9,528.0	Niobrara, Original Hole
9,460.0	5.034	111			Perforated Liner	12/17/2014	9,585.0	9,587.0	Niobrara, Original Hole
9,650.9	5.034	111			Perforated Liner	12/16/2014	9,651.0	9,653.0	Niobrara, Original Hole
9,780.8	5.032	111			Perforated Liner	12/16/2014	9,715.0	9,717.0	Niobrara, Original Hole
9,969.2	5.037	111			Perforated Liner	12/16/2014	9,779.0	9,781.0	Niobrara, Original Hole
10,099.1	5.031	111			Perforated Liner	12/16/2014	9,840.0	9,842.0	Niobrara, Original Hole
10,291.0	5.034	111			Perforated Liner	12/16/2014	9,911.0	9,913.0	Niobrara, Original Hole
10,420.9	5.031	111			Perforated Liner	12/16/2014	9,969.0	9,971.0	Niobrara, Original Hole
10,610.9	5.031	111			Perforated Liner	12/16/2014	10,035.0	10,037.0	Niobrara, Original Hole
10,737.9	5.033	111			Perforated Liner	12/16/2014	10,097.0	10,099.0	Niobrara, Original Hole
10,931.1	5.034	111			Perforated Liner	12/16/2014	10,163.0	10,165.0	Niobrara, Original Hole
11,061.0	5.034	111			Perforated Liner	12/16/2014	10,225.0	10,227.0	Niobrara, Original Hole
11,257.9	5.037	111	Perforated Liner	12/16/2014	10,291.0	10,293.0	Niobrara, Original Hole		
11,383.9	5.037	111	Perforated Liner	12/16/2014	10,355.0	10,357.0	Niobrara, Original Hole		
11,570.9	5.037	111	Perforated Liner	12/15/2014	10,419.0	10,421.0	Niobrara, Original Hole		
11,701.1	5.031	111	Perforated Liner	12/15/2014	10,480.0	10,482.0	Niobrara, Original Hole		
11,894.0	5.032	111	Perforated Liner	12/15/2014	10,547.0	10,549.0	Niobrara, Original Hole		
12,020.0	5.031	111	Perforated Liner	12/15/2014	10,611.0	10,613.0	Niobrara, Original Hole		
12,210.0	5.034	111	Perforated Liner	12/15/2014	10,675.0	10,677.0	Niobrara, Original Hole		
12,339.9	5.031	111	Perforated Liner	12/15/2014	10,736.0	10,738.0	Niobrara, Original Hole		
12,529.9	5.037	111	Perforated Liner	12/14/2014	10,805.0	10,807.0	Niobrara, Original Hole		
12,660.1	5.033	111	Perforated Liner	12/14/2014	10,867.0	10,869.0	Niobrara, Original Hole		
12,855.0	5.037	111	Perforated Liner	12/14/2014	10,931.0	10,933.0	Niobrara, Original Hole		
12,979.0	5.034	111	Perforated Liner	12/14/2014	10,993.0	10,995.0	Niobrara, Original Hole		
13,169.9	5.031	111	Perforated Liner	12/14/2014	11,059.0	11,061.0	Niobrara, Original Hole		
13,299.9	5.031	111	Perforated Liner	12/14/2014	11,118.0	11,120.0	Niobrara, Original Hole		
13,490.2	5.034	111	Perforated Liner	12/14/2014	11,187.0	11,189.0	Niobrara, Original Hole		
13,620.1	5.033	111	Perforated Liner	12/14/2014	11,258.0	11,260.0	Niobrara, Original Hole		
13,833.2	5.031	111	Perforated Liner	12/14/2014	11,315.0	11,317.0	Niobrara, Original Hole		
			Perforated Liner	12/14/2014	11,382.0	11,384.0	Niobrara, Original Hole		
			Perforated Liner	12/14/2014	11,443.0	11,445.0	Niobrara, Original Hole		
			Perforated Liner	12/14/2014	11,510.0	11,512.0	Niobrara, Original Hole		
			Perforated Liner	12/14/2014	11,571.0	11,573.0	Niobrara, Original Hole		
			Perforated Liner	12/14/2014	11,635.0	11,637.0	Niobrara, Original Hole		
			Perforated Liner	12/14/2014	11,699.0	11,701.0	Niobrara, Original Hole		
			Perforated Liner	12/13/2014	11,764.0	11,766.0	Niobrara, Original Hole		
			Perforated Liner	12/13/2014	11,826.0	11,828.0	Niobrara, Original Hole		
			Perforated Liner	12/13/2014	11,894.0	11,896.0	Niobrara, Original Hole		
			Perforated Liner	12/13/2014	11,954.0	11,956.0	Niobrara, Original Hole		
			Perforated Liner	12/13/2014	12,018.0	12,020.0	Niobrara, Original Hole		
			Perforated Liner	12/13/2014	12,082.0	12,084.0	Niobrara, Original Hole		

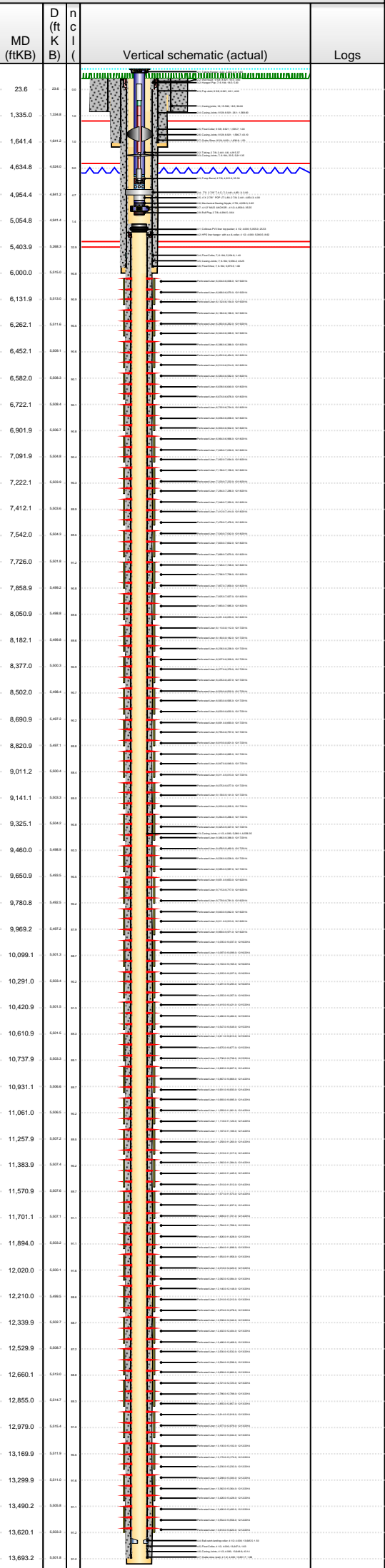


Lease Review All - Frac Summary

Well Name: HORSETAIL 29G-2012B

API Number 051233880400	WPC ID 1CO0761129	Well Permit Number	Field Name Wildcat	County Weld	State CO
Well Configuration Type Lateral/Horizontal	Orig KB Elv (ft) 4,712.50	Ground Elevation (ft) 4,694.00	Casing Flange Elevation (ft)	Tubing Head Elevation (ft)	Total Depth (ftKB) 13,700.0
Original Spud Date 10/19/2014	Completion Date 12/19/2014	Asset Group Redtail	Responsible Engineer Charles Ohlson	N/S Dist (ft) 2,328.0	N/S Ref FNL
				E/W Dist (ft) 1,888.0	E/W Ref FEL
Lot	Quarter 1 SW	Quarter 2 NE	Quarter 3	Quarter 4	Section 29
					Section Suffix
					Section Type
					Township 10 N
					Township N/S Dir
					Range 57
					Range E/W Dir W
					Meridian

Lateral/Horizontal - Original Hole, 3/6/2015 10:40:19 AM



Perforations					
Type of Hole	Date	Top (ftKB)	Btm (ftKB)	Zone	
Perforated Liner	12/13/2014	12,146.0	12,148.0	Niobrara, Original Hole	
Perforated Liner	12/13/2014	12,210.0	12,212.0	Niobrara, Original Hole	
Perforated Liner	12/13/2014	12,274.0	12,276.0	Niobrara, Original Hole	
Perforated Liner	12/13/2014	12,338.0	12,340.0	Niobrara, Original Hole	
Perforated Liner	12/13/2014	12,402.0	12,404.0	Niobrara, Original Hole	
Perforated Liner	12/13/2014	12,466.0	12,468.0	Niobrara, Original Hole	
Perforated Liner	12/13/2014	12,530.0	12,532.0	Niobrara, Original Hole	
Perforated Liner	12/13/2014	12,594.0	12,596.0	Niobrara, Original Hole	
Perforated Liner	12/13/2014	12,658.0	12,660.0	Niobrara, Original Hole	
Perforated Liner	12/13/2014	12,721.0	12,723.0	Niobrara, Original Hole	
Perforated Liner	12/13/2014	12,786.0	12,788.0	Niobrara, Original Hole	
Perforated Liner	12/13/2014	12,850.0	12,852.0	Niobrara, Original Hole	
Perforated Liner	12/13/2014	12,914.0	12,916.0	Niobrara, Original Hole	
Perforated Liner	12/13/2014	12,977.0	12,979.0	Niobrara, Original Hole	
Perforated Liner	12/13/2014	13,042.0	13,044.0	Niobrara, Original Hole	
Perforated Liner	12/12/2014	13,100.0	13,102.0	Niobrara, Original Hole	
Perforated Liner	12/12/2014	13,170.0	13,172.0	Niobrara, Original Hole	
Perforated Liner	12/12/2014	13,230.0	13,232.0	Niobrara, Original Hole	
Perforated Liner	12/12/2014	13,298.0	13,300.0	Niobrara, Original Hole	
Perforated Liner	12/12/2014	13,362.0	13,364.0	Niobrara, Original Hole	
Perforated Liner	12/12/2014	13,426.0	13,428.0	Niobrara, Original Hole	
Perforated Liner	12/12/2014	13,490.0	13,492.0	Niobrara, Original Hole	
Perforated Liner	12/12/2014	13,554.0	13,556.0	Niobrara, Original Hole	
Perforated Liner	12/12/2014	13,618.0	13,620.0	Niobrara, Original Hole	

Stimulations & Treatments

Sand Frac on 12/12/2014 06:00

Comment
 Treatment End Date:12/19/2014; Number of staged intervals: 40; Number of perfs: 1440; Min frac gradient: 0.78 psi/ft; 643 bbl Total 15% HCL Used, 82881 bbl 22# pHaserFrac XL Gel, 14195 bbl 22# CMHPG WaterFrac Linear Gel, 33373 bbl Slickwater

Total Clean Volu...	Vol Slurry Tot (bbl)	Proppant Desig...	Proppant Frm (lb)	P Max (psi)	Avg Treat...	Avg Treat...	Max Tre...	Frac Gr...
131091.90		6,920,000.0	6,549,693.0	10,261.0	3,918.0	49.10	51.50	0.78

Total Add Amount
 Proppant 20/40 Ottawa 6429856 lb; Proppant 40/70 Ottawa 118868 lb

Stim/Treat Fluids

Fluid Name
 22# pHaserFrac XL Gel; 22# CMHPG WaterFrac Linear

Stim/Treat Stages

Interval 1

Stg #	Start Date	Top (ftKB)	Btm (ftKB)	Vol Clean...	Vol Slurry...	Comment
1	12/12/2014	13,490.0	13,620.0	1289.10		pHaserFrac 22#:0 bbl; 22# WaterFrac CMHPG Linear Gel:222 bbl; Slickwater:1043 bbl; 15% HCL:24 bbl

Stim/Treat Additives

Stg #	Add	Type	Amount	Units	Sand Size
1	Proppant	40/70 Ottawa	3,110.0	lb	40/70

Interval 2

Stg #	Start Date	Top (ftKB)	Btm (ftKB)	Vol Clean...	Vol Slurry...	Comment
2	12/12/2014	13,298.0	13,428.0	3615.60		pHaserFrac 22#:1918 bbl; 22# WaterFrac CMHPG Linear Gel:352 bbl; Slickwater:1322 bbl; 15% HCL:24 bbl

Stim/Treat Additives

Stg #	Add	Type	Amount	Units	Sand Size
2	Proppant	20/40 Ottawa	107,489.0	lb	20/40
2	Proppant	40/70 Ottawa	2,199.0	lb	40/70

Interval 3

Stg #	Start Date	Top (ftKB)	Btm (ftKB)	Vol Clean...	Vol Slurry...	Comment
3	12/12/2014	13,100.0	13,232.0	3594.80		pHaserFrac 22#:1764 bbl; 22# WaterFrac CMHPG Linear Gel:378 bbl; Slickwater:1429 bbl; 15% HCL:24 bbl

Stim/Treat Additives

Stg #	Add	Type	Amount	Units	Sand Size
3	Proppant	20/40 Ottawa	107,793.0	lb	20/40
3	Proppant	40/70 Ottawa	3,021.0	lb	40/70

Interval 4

Stg #	Start Date	Top (ftKB)	Btm (ftKB)	Vol Clean...	Vol Slurry...	Comment
4	12/12/2014	12,914.0	13,044.0	3544.90		pHaserFrac 22#:2169 bbl; 22# WaterFrac CMHPG Linear Gel:344 bbl; Slickwater:1009 bbl; 15% HCL:24 bbl

Stim/Treat Additives

Stg #	Add	Type	Amount	Units	Sand Size
4	Proppant	20/40 Ottawa	166,978.0	lb	20/40
4	Proppant	40/70 Ottawa	1,870.0	lb	40/70

Interval 5

Stg #	Start Date	Top (ftKB)	Btm (ftKB)	Vol Clean...	Vol Slurry...	Comment
5	12/13/2014	12,721.0	12,857.0	3179.60		pHaserFrac 22#:1833 bbl; 22# WaterFrac CMHPG Linear Gel:373 bbl; Slickwater:950 bbl; 15% HCL:24 bbl



Lease Review All - Frac Summary

Well Name: HORSETAIL 29G-2012B

API Number 051233880400	WPC ID 1CO0761129	Well Permit Number	Field Name Wildcat	County Weld	State CO
Well Configuration Type Lateral/Horizontal	Orig KB Elv (ft) 4,712.50	Ground Elevation (ft) 4,694.00	Casing Flange Elevation (ft)	Tubing Head Elevation (ft)	Total Depth (ftKB) 13,700.0
Original Spud Date 10/19/2014	Completion Date 12/19/2014	Asset Group Redtail	Responsible Engineer Charles Ohlson	N/S Dist (ft) 2,328.0	N/S Ref FNL
				E/W Dist (ft) 1,888.0	E/W Ref FEL
Lot	Quarter 1 SW	Quarter 2 NE	Quarter 3	Quarter 4	Section 29
			Section Suffix	Section Type	Township 10 N
					Township N/S Dir Range 57 W

Lateral/Horizontal - Original Hole, 3/6/2015 10:40:22 AM

MD (ftKB)	D (ft)	nc (K)	l (B)	Vertical schematic (actual)	Logs	Stim/Treat Additives						
						Stg #	Add	Type	Amount	Units	Sand Size	
						5	Proppant	20/40 Ottawa	129,212.0	lb	20/40	
						5	Proppant	40/70 Ottawa	3,300.0	lb	40/70	
Interval 6												
						Stg #	Start Date	Top (ftKB)	Btm (ftKB)	Vol Clean...	Vol Slurry...	Comment
						6	12/13/2014	12,530.0	12,660.0	3441.00		pHaserFrac 22#:1920 bbl; 22# WaterFrac CMHPG Linear Gel:394 bbl; Slickwater:1103 bbl; 15% HCL:24 bbl
Stim/Treat Additives												
						Stg #	Add	Type	Amount	Units	Sand Size	
						6	Proppant	20/40 Ottawa	129,864.0	lb	20/40	
						6	Proppant	40/70 Ottawa	2,490.0	lb	40/70	
Interval 7												
						Stg #	Start Date	Top (ftKB)	Btm (ftKB)	Vol Clean...	Vol Slurry...	Comment
						7	12/13/2014	12,338.0	12,468.0	3501.70		pHaserFrac 22#:2158 bbl; 22# WaterFrac CMHPG Linear Gel:389 bbl; Slickwater:931 bbl; 15% HCL:24 bbl
Stim/Treat Additives												
						Stg #	Add	Type	Amount	Units	Sand Size	
						7	Proppant	20/40 Ottawa	168,517.0	lb	20/40	
						7	Proppant	40/70 Ottawa	2,615.0	lb	40/70	
Interval 8												
						Stg #	Start Date	Top (ftKB)	Btm (ftKB)	Vol Clean...	Vol Slurry...	Comment
						8	12/13/2014	12,146.0	12,276.0	3464.90		pHaserFrac 22#:2107 bbl; 22# WaterFrac CMHPG Linear Gel:433 bbl; Slickwater:901 bbl; 15% HCL:24 bbl
Stim/Treat Additives												
						Stg #	Add	Type	Amount	Units	Sand Size	
						8	Proppant	20/40 Ottawa	166,153.0	lb	20/40	
						8	Proppant	40/70 Ottawa	3,510.0	lb	40/70	
Interval 9												
						Stg #	Start Date	Top (ftKB)	Btm (ftKB)	Vol Clean...	Vol Slurry...	Comment
						9	12/13/2014	11,954.0	12,084.0	3375.40		pHaserFrac 22#:2167 bbl; 22# WaterFrac CMHPG Linear Gel:340 bbl; Slickwater:845 bbl; 15% HCL:24 bbl
Stim/Treat Additives												
						Stg #	Add	Type	Amount	Units	Sand Size	
						9	Proppant	20/40 Ottawa	170,475.0	lb	20/40	
						9	Proppant	40/70 Ottawa	2,595.0	lb	40/70	
Interval 10												
						Stg #	Start Date	Top (ftKB)	Btm (ftKB)	Vol Clean...	Vol Slurry...	Comment
						10	12/13/2014	11,764.0	11,896.0	3413.50		pHaserFrac 22#:2167 bbl; 22# WaterFrac CMHPG Linear Gel:327 bbl; Slickwater:896 bbl; 15% HCL:24 bbl
Stim/Treat Additives												
						Stg #	Add	Type	Amount	Units	Sand Size	
						10	Proppant	20/40 Ottawa	170,123.0	lb	20/40	
						10	Proppant	40/70 Ottawa	2,019.0	lb	40/70	
Interval 11												
						Stg #	Start Date	Top (ftKB)	Btm (ftKB)	Vol Clean...	Vol Slurry...	Comment
						11	12/13/2014	11,571.0	11,701.0	3378.00		pHaserFrac 22#:2152 bbl; 22# WaterFrac CMHPG Linear Gel:325 bbl; Slickwater:877 bbl; 15% HCL:24 bbl
Stim/Treat Additives												
						Stg #	Add	Type	Amount	Units	Sand Size	
						11	Proppant	20/40 Ottawa	166,770.0	lb	20/40	
						11	Proppant	40/70 Ottawa	2,448.0	lb	40/70	
Interval 12												
						Stg #	Start Date	Top (ftKB)	Btm (ftKB)	Vol Clean...	Vol Slurry...	Comment
						12	12/14/2014	11,382.0	11,512.0	3376.40		pHaserFrac 22#:2120 bbl; 22# WaterFrac CMHPG Linear Gel:374 bbl; Slickwater:858 bbl; 15% HCL:24 bbl
Stim/Treat Additives												
						Stg #	Add	Type	Amount	Units	Sand Size	
						12	Proppant	20/40 Ottawa	164,081.0	lb	20/40	
						12	Proppant	40/70 Ottawa	2,816.0	lb	40/70	
Interval 13												
						Stg #	Start Date	Top (ftKB)	Btm (ftKB)	Vol Clean...	Vol Slurry...	Comment
						13	12/14/2014	11,187.0	11,317.0	3507.20		pHaserFrac 22#:2148 bbl; 22# WaterFrac CMHPG Linear Gel:364 bbl; Slickwater:971 bbl; 15% HCL:24 bbl
Stim/Treat Additives												
						Stg #	Add	Type	Amount	Units	Sand Size	
						13	Proppant	20/40 Ottawa	168,325.0	lb	20/40	
						13	Proppant	40/70 Ottawa	3,133.0	lb	40/70	
Interval 14												
						Stg #	Start Date	Top (ftKB)	Btm (ftKB)	Vol Clean...	Vol Slurry...	Comment
						14	12/14/2014	10,993.0	11,120.0	3612.10		pHaserFrac 22#:2148 bbl; 22# WaterFrac CMHPG Linear Gel:504 bbl; Slickwater:937 bbl; 15% HCL:24 bbl
Stim/Treat Additives												
						Stg #	Add	Type	Amount	Units	Sand Size	
						14	Proppant	20/40 Ottawa	165,832.0	lb	20/40	

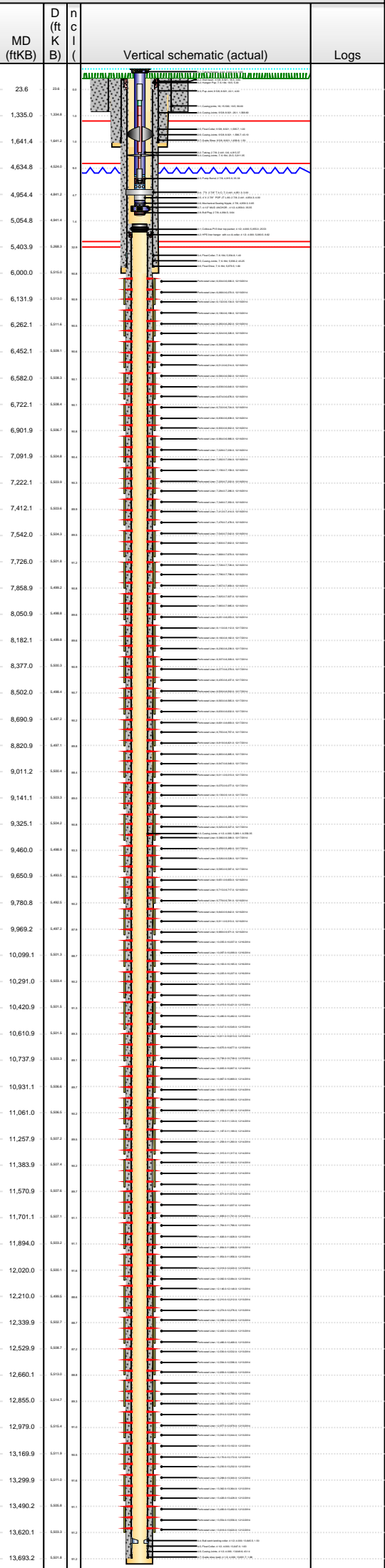


Lease Review All - Frac Summary

Well Name: HORSETAIL 29G-2012B

API Number 051233880400	WPC ID 1CO0761129	Well Permit Number	Field Name Wildcat	County Weld	State CO
Well Configuration Type Lateral/Horizontal	Orig KB Elv (ft) 4,712.50	Ground Elevation (ft) 4,694.00	Casing Flange Elevation (ft)	Tubing Head Elevation (ft)	Total Depth (ftKB) 13,700.0
Original Spud Date 10/19/2014	Completion Date 12/19/2014	Asset Group Redtail	Responsible Engineer Charles Ohlson	N/S Dist (ft) 2,328.0	N/S Ref FNL
Lot	Quarter 1 SW	Quarter 2 NE	Quarter 3	Quarter 4	Section 29
	Section Suffix	Section Type	Township 10 N	Township N/S Dir	Range 57 W
				Range E/W Dir	Meridian FEL

Lateral/Horizontal - Original Hole, 3/6/2015 10:40:24 AM



Stim/Treat Additives		Add		Type		Amount		Units		Sand Size	
14	Proppant	40/70 Ottawa				3,002.0	lb			40/70	
Interval 15											
Stg #	Start Date	Top (ftKB)	Btm (ftKB)	Vol Clean...	Vol Slurry...	Comment					
15	12/14/2014	10,805.0	10,933.0	3580.90		pHaserFrac 22#:2185 bbl; 22# WaterFrac CMHPG Linear Gel:347 bbl; Slickwater:1025 bbl; 15% HCL:24 bbl					
Stim/Treat Additives											
15	Proppant	20/40 Ottawa				172,443.0	lb			20/40	
15	Proppant	40/70 Ottawa				2,980.0	lb			40/70	
Interval 16											
Stg #	Start Date	Top (ftKB)	Btm (ftKB)	Vol Clean...	Vol Slurry...	Comment					
16	12/14/2014	10,611.0	10,738.0	3332.10		pHaserFrac 22#:2176 bbl; 22# WaterFrac CMHPG Linear Gel:326 bbl; Slickwater:807 bbl; 15% HCL:24 bbl					
Stim/Treat Additives											
16	Proppant	20/40 Ottawa				177,059.0	lb			20/40	
16	Proppant	40/70 Ottawa				2,276.0	lb			40/70	
Interval 17											
Stg #	Start Date	Top (ftKB)	Btm (ftKB)	Vol Clean...	Vol Slurry...	Comment					
17	12/16/2014	10,419.0	10,549.0	3247.30		pHaserFrac 22#:1798 bbl; 22# WaterFrac CMHPG Linear Gel:349 bbl; Slickwater:1077 bbl; 15% HCL:24 bbl					
Stim/Treat Additives											
17	Proppant	20/40 Ottawa				124,451.0	lb			20/40	
17	Proppant	40/70 Ottawa				3,050.0	lb			40/70	
Interval 18											
Stg #	Start Date	Top (ftKB)	Btm (ftKB)	Vol Clean...	Vol Slurry...	Comment					
18	12/16/2014	10,225.0	10,357.0	3949.30		pHaserFrac 22#:2668 bbl; 22# WaterFrac CMHPG Linear Gel:306 bbl; Slickwater:952 bbl; 15% HCL:24 bbl					
Stim/Treat Additives											
18	Proppant	20/40 Ottawa				166,635.0	lb			20/40	
18	Proppant	40/70 Ottawa				3,322.0	lb			40/70	
Interval 19											
Stg #	Start Date	Top (ftKB)	Btm (ftKB)	Vol Clean...	Vol Slurry...	Comment					
19	12/16/2014	10,035.0	10,165.0	3415.10		pHaserFrac 22#:2150 bbl; 22# WaterFrac CMHPG Linear Gel:345 bbl; Slickwater:896 bbl; 15% HCL:24 bbl					
Stim/Treat Additives											
19	Proppant	20/40 Ottawa				172,379.0	lb			20/40	
19	Proppant	40/70 Ottawa				2,715.0	lb			40/70	
Interval 20											
Stg #	Start Date	Top (ftKB)	Btm (ftKB)	Vol Clean...	Vol Slurry...	Comment					
20	12/16/2014	9,840.0	9,971.0	3353.50		pHaserFrac 22#:2137 bbl; 22# WaterFrac CMHPG Linear Gel:339 bbl; Slickwater:854 bbl; 15% HCL:24 bbl					
Stim/Treat Additives											
20	Proppant	20/40 Ottawa				175,378.0	lb			20/40	
20	Proppant	40/70 Ottawa				2,744.0	lb			40/70	
Interval 21											
Stg #	Start Date	Top (ftKB)	Btm (ftKB)	Vol Clean...	Vol Slurry...	Comment					
21	12/16/2014	9,651.0	9,781.0	3326.70		pHaserFrac 22#:2132 bbl; 22# WaterFrac CMHPG Linear Gel:344 bbl; Slickwater:827 bbl; 15% HCL:24 bbl					
Stim/Treat Additives											
21	Proppant	20/40 Ottawa				170,091.0	lb			20/40	
21	Proppant	40/70 Ottawa				2,986.0	lb			40/70	
Interval 22											
Stg #	Start Date	Top (ftKB)	Btm (ftKB)	Vol Clean...	Vol Slurry...	Comment					
22	12/16/2014	9,458.0	9,587.0	3319.90		pHaserFrac 22#:2142 bbl; 22# WaterFrac CMHPG Linear Gel:358 bbl; Slickwater:796 bbl; 15% HCL:24 bbl					
Stim/Treat Additives											
22	Proppant	20/40 Ottawa				180,041.0	lb			20/40	
22	Proppant	40/70 Ottawa				3,330.0	lb			40/70	
Interval 23											
Stg #	Start Date	Top (ftKB)	Btm (ftKB)	Vol Clean...	Vol Slurry...	Comment					
23	12/17/2014	9,264.0	9,388.0	3398.00		pHaserFrac 22#:2239 bbl; 22# WaterFrac CMHPG Linear Gel:389 bbl; Slickwater:746 bbl; 15% HCL:24 bbl					
Stim/Treat Additives											
23	Proppant	20/40 Ottawa				169,058.0	lb			20/40	
23	Proppant	40/70 Ottawa				2,874.0	lb			40/70	

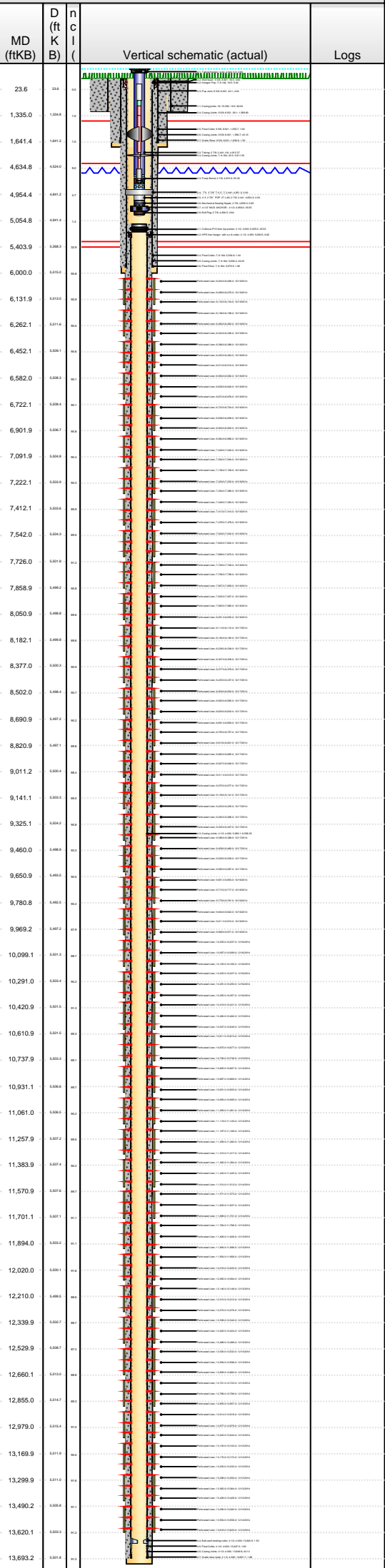


Lease Review All - Frac Summary

Well Name: HORSETAIL 29G-2012B

API Number 051233880400	WPC ID 1CO0761129	Well Permit Number	Field Name Wildcat	County Weld	State CO
Well Configuration Type Lateral/Horizontal	Orig KB Elv (ft) 4,712.50	Ground Elevation (ft) 4,694.00	Casing Flange Elevation (ft)	Tubing Head Elevation (ft)	Total Depth (ftKB) 13,700.0
Original Spud Date 10/19/2014	Completion Date 12/19/2014	Asset Group Redtail	Responsible Engineer Charles Ohlson	N/S Dist (ft) 2,328.0	N/S Ref FNL
				E/W Dist (ft) 1,888.0	E/W Ref FEL
Lot	Quarter 1 SW	Quarter 2 NE	Quarter 3	Quarter 4	Section 29
					Section Suffix
					Section Type
					Township 10 N
					Township N/S Dir
					Range 57 W
					Range E/W Dir
					Meridian

Lateral/Horizontal - Original Hole, 3/6/2015 10:40:27 AM



Stim/Treat Stages

Interval	Stg #	Start Date	Top (ftKB)	Btm (ftKB)	Vol Clean...	Vol Slurry...	Comment
Interval 24	24	12/17/2014	9,075.0	9,205.0	3118.50		pHaserFrac 22#:2208 bbl; 22# WaterFrac CMHPG Linear Gel:352 bbl; Slickwater:534 bbl; 15% HCL:24 bbl
Stim/Treat Additives							
	Stg #	Add	Type		Amount	Units	Sand Size
	24	Proppant	20/40 Ottawa		172,076.0	lb	20/40
	24	Proppant	40/70 Ottawa		2,902.0	lb	40/70
Interval 25	25	12/17/2014	8,883.0	9,013.0	3485.60		pHaserFrac 22#:2136 bbl; 22# WaterFrac CMHPG Linear Gel:486 bbl; Slickwater:840 bbl; 15% HCL:24 bbl
Stim/Treat Additives							
	Stg #	Add	Type		Amount	Units	Sand Size
	25	Proppant	20/40 Ottawa		172,250.0	lb	20/40
	25	Proppant	40/70 Ottawa		2,966.0	lb	40/70
Interval 26	26	12/17/2014	8,691.0	8,821.0	3386.20		pHaserFrac 22#:2180 bbl; 22# WaterFrac CMHPG Linear Gel:350 bbl; Slickwater:833 bbl; 15% HCL:24 bbl
Stim/Treat Additives							
	Stg #	Add	Type		Amount	Units	Sand Size
	26	Proppant	20/40 Ottawa		173,334.0	lb	20/40
	26	Proppant	40/70 Ottawa		3,531.0	lb	40/70
Interval 27	27	12/17/2014	8,500.0	8,632.0	3267.70		pHaserFrac 22#:2121 bbl; 22# WaterFrac CMHPG Linear Gel:334 bbl; Slickwater:789 bbl; 15% HCL:24 bbl
Stim/Treat Additives							
	Stg #	Add	Type		Amount	Units	Sand Size
	27	Proppant	20/40 Ottawa		167,420.0	lb	20/40
	27	Proppant	40/70 Ottawa		2,780.0	lb	40/70
Interval 28	28	12/17/2014	8,307.0	8,437.0	3171.50		pHaserFrac 22#:2133 bbl; 22# WaterFrac CMHPG Linear Gel:345 bbl; Slickwater:693 bbl; 15% HCL:0 bbl
Stim/Treat Additives							
	Stg #	Add	Type		Amount	Units	Sand Size
	28	Proppant	20/40 Ottawa		166,500.0	lb	20/40
	28	Proppant	40/70 Ottawa		3,420.0	lb	40/70
Interval 29	29	12/17/2014	8,110.0	8,238.0	3151.70		pHaserFrac 22#:2122 bbl; 22# WaterFrac CMHPG Linear Gel:341 bbl; Slickwater:689 bbl; 15% HCL:0 bbl
Stim/Treat Additives							
	Stg #	Add	Type		Amount	Units	Sand Size
	29	Proppant	20/40 Ottawa		164,379.0	lb	20/40
	29	Proppant	40/70 Ottawa		2,946.0	lb	40/70
Interval 30	30	12/17/2014	7,925.0	8,053.0	3155.10		pHaserFrac 22#:2130 bbl; 22# WaterFrac CMHPG Linear Gel:343 bbl; Slickwater:682 bbl; 15% HCL:0 bbl
Stim/Treat Additives							
	Stg #	Add	Type		Amount	Units	Sand Size
	30	Proppant	20/40 Ottawa		169,069.0	lb	20/40
	30	Proppant	40/70 Ottawa		2,908.0	lb	40/70
Interval 31	31	12/18/2014	7,726.0	7,859.0	3152.50		pHaserFrac 22#:2121 bbl; 22# WaterFrac CMHPG Linear Gel:342 bbl; Slickwater:689 bbl; 15% HCL:0 bbl
Stim/Treat Additives							
	Stg #	Add	Type		Amount	Units	Sand Size
	31	Proppant	20/40 Ottawa		170,779.0	lb	20/40
	31	Proppant	40/70 Ottawa		3,374.0	lb	40/70
Interval 32	32	12/18/2014	7,540.0	7,670.0	3213.70		pHaserFrac 22#:2154 bbl; 22# WaterFrac CMHPG Linear Gel:360 bbl; Slickwater:700 bbl; 15% HCL:0 bbl
Stim/Treat Additives							
	Stg #	Add	Type		Amount	Units	Sand Size
	32	Proppant	20/40 Ottawa		173,430.0	lb	20/40
	32	Proppant	40/70 Ottawa		3,453.0	lb	40/70



Lease Review All - Frac Summary

Well Name: HORSETAIL 29G-2012B

API Number 051233880400	WPC ID 1CO0761129	Well Permit Number	Field Name Wildcat	County Weld	State CO
Well Configuration Type Lateral/Horizontal	Orig KB Elv (ft) 4,712.50	Ground Elevation (ft) 4,694.00	Casing Flange Elevation (ft)	Tubing Head Elevation (ft)	Total Depth (ftKB) 13,700.0
Original Spud Date 10/19/2014	Completion Date 12/19/2014	Asset Group Redtail	Responsible Engineer Charles Ohlson	N/S Dist (ft) 2,328.0	N/S Ref FNL
				E/W Dist (ft) 1,888.0	E/W Ref FEL
Lot	Quarter 1 SW	Quarter 2 NE	Quarter 3	Quarter 4	Section 29
					Section Suffix
					Section Type
					Township 10 N
					Township N/S Dir
					Range 57 W
					Range E/W Dir
					Meridian

Lateral/Horizontal - Original Hole, 3/6/2015 10:40:29 AM

MD (ftKB)	D (ft B)	n c l ()	Vertical schematic (actual)	Logs	Interval	Stg #	Start Date	Top (ftKB)	Btm (ftKB)	Vol Clean...	Vol Slurry...	Comment	
23.6	204	111			Interval 33	33	12/18/2014	7,348.0	7,478.0	3171.10		pHaserFrac 22#:2177 bbl; 22# WaterFrac CMHPG Linear Gel:340 bbl; Slickwater:654 bbl; 15% HCL:0 bbl	
1,335.0	1,344	112			Stim/Treat Additives	Stg #	Add	Type	Amount	Units	Sand Size		
1,641.4	1,641	112			33	Proppant	20/40 Ottawa	173,310.0	lb	20/40			
4,634.8	4,634	114			33	Proppant	40/70 Ottawa	3,112.0	lb	40/70			
4,954.4	4,954	117			Interval 34	Stg #	Start Date	Top (ftKB)	Btm (ftKB)	Vol Clean...	Vol Slurry...	Comment	
5,054.8	5,054	111			34	12/18/2014	7,156.0	7,286.0	3179.30			pHaserFrac 22#:2185 bbl; 22# WaterFrac CMHPG Linear Gel:342 bbl; Slickwater:653 bbl; 15% HCL:0 bbl	
5,403.9	5,403	114			Stim/Treat Additives	Stg #	Add	Type	Amount	Units	Sand Size		
6,000.0	6,000	111			34	Proppant	20/40 Ottawa	176,153.0	lb	20/40			
6,131.9	6,131	111			34	Proppant	40/70 Ottawa	2,886.0	lb	40/70			
6,262.1	6,262	111			Interval 35	Stg #	Start Date	Top (ftKB)	Btm (ftKB)	Vol Clean...	Vol Slurry...	Comment	
6,452.1	6,452	114			35	12/18/2014	6,964.0	7,094.0	3102.40			pHaserFrac 22#:2127 bbl; 22# WaterFrac CMHPG Linear Gel:348 bbl; Slickwater:628 bbl; 15% HCL:0 bbl	
6,582.0	6,582	111			Stim/Treat Additives	Stg #	Add	Type	Amount	Units	Sand Size		
6,722.1	6,722	111			35	Proppant	20/40 Ottawa	175,359.0	lb	20/40			
6,901.9	6,901	114	35	Proppant	40/70 Ottawa	3,130.0	lb	40/70					
7,091.9	7,091	111	Interval 36	Stg #	Start Date	Top (ftKB)	Btm (ftKB)	Vol Clean...	Vol Slurry...	Comment			
7,222.1	7,222	111	36	12/18/2014	6,722.0	6,902.0	3095.00			pHaserFrac 22#:2135 bbl; 22# WaterFrac CMHPG Linear Gel:349 bbl; Slickwater:610 bbl; 15% HCL:0 bbl			
7,412.1	7,412	114	Stim/Treat Additives	Stg #	Add	Type	Amount	Units	Sand Size				
7,542.0	7,542	111	36	Proppant	20/40 Ottawa	177,528.0	lb	20/40					
7,726.0	7,726	111	36	Proppant	40/70 Ottawa	3,554.0	lb	40/70					
7,858.9	7,858	114	Interval 37	Stg #	Start Date	Top (ftKB)	Btm (ftKB)	Vol Clean...	Vol Slurry...	Comment			
8,050.9	8,050	111	37	12/18/2014	6,580.0	6,676.0	3064.20			pHaserFrac 22#:2118 bbl; 22# WaterFrac CMHPG Linear Gel:356 bbl; Slickwater:590 bbl; 15% HCL:0 bbl			
8,182.1	8,182	114	Stim/Treat Additives	Stg #	Add	Type	Amount	Units	Sand Size				
8,377.0	8,377	111	37	Proppant	20/40 Ottawa	176,130.0	lb	20/40					
8,502.0	8,502	114	37	Proppant	40/70 Ottawa	3,362.0	lb	40/70					
8,690.9	8,690	111	Interval 38	Stg #	Start Date	Top (ftKB)	Btm (ftKB)	Vol Clean...	Vol Slurry...	Comment			
8,820.9	8,820	114	38	12/18/2014	6,386.0	6,514.0	3071.00			pHaserFrac 22#:2139 bbl; 22# WaterFrac CMHPG Linear Gel:343 bbl; Slickwater:589 bbl; 15% HCL:0 bbl			
9,011.2	9,011	111	Stim/Treat Additives	Stg #	Add	Type	Amount	Units	Sand Size				
9,141.1	9,141	111	38	Proppant	20/40 Ottawa	180,207.0	lb	20/40					
9,325.1	9,325	111	38	Proppant	40/70 Ottawa	3,431.0	lb	40/70					
9,460.0	9,460	114	Interval 39	Stg #	Start Date	Top (ftKB)	Btm (ftKB)	Vol Clean...	Vol Slurry...	Comment			
9,650.9	9,650	111	39	12/18/2014	6,196.0	6,326.0	3046.00			pHaserFrac 22#:2121 bbl; 22# WaterFrac CMHPG Linear Gel:346 bbl; Slickwater:579 bbl; 15% HCL:0 bbl			
9,780.8	9,780	114	Stim/Treat Additives	Stg #	Add	Type	Amount	Units	Sand Size				
9,969.2	9,969	111	39	Proppant	20/40 Ottawa	173,831.0	lb	20/40					
10,099.1	10,099	114	39	Proppant	40/70 Ottawa	3,423.0	lb	40/70					
10,291.0	10,291	111	Interval 40	Stg #	Start Date	Top (ftKB)	Btm (ftKB)	Vol Clean...	Vol Slurry...	Comment			
10,420.9	10,420	111	40	12/19/2014	6,004.0	6,134.0	3043.40			pHaserFrac 22#:2178 bbl; 22# WaterFrac CMHPG Linear Gel:297 bbl; Slickwater:569 bbl; 15% HCL:0 bbl			
10,610.9	10,610	114	Stim/Treat Additives	Stg #	Add	Type	Amount	Units	Sand Size				
10,737.9	10,737	111	40	Proppant	20/40 Ottawa	178,954.0	lb	20/40					
10,931.1	10,931	111	40	Proppant	40/70 Ottawa	3,285.0	lb	40/70					
11,061.0	11,061	114	Tubing - Production set at 4,995.2ftKB on 1/16/2015 07:46	Set Depth (ftKB)	Comment	Run Date	Pull Date						
11,257.9	11,257	111	4,995.2			1/16/2015							
11,383.9	11,383	111	Item Des	OD (in)	ID (in)	Len (ft)	Top (ftKB)	Btm (ftKB)					
11,570.9	11,570	114	Tubing Hanger	4.4444	2.444	0.60	0.0	0.6					
11,701.1	11,701	111	Tubing	2 7/8	2.441	4,915.37	0.6	4,915.9					
11,894.0	11,894	111	Pump Barrel	2 7/8		35.38	4,915.9	4,951.3					
12,020.0	12,020	114	7"X 2 7/8" T A C	7	2.441	3.00	4,951.3	4,954.3					
12,210.0	12,210	111	4' X 2 7/8" POP JT L-80	2 7/8	2.441	4.00	4,954.3	4,958.3					
12,339.9	12,339	111	Mechanical Seating Nipple	2 7/8		0.65	4,958.3	4,959.0					
12,529.9	12,529	111											
12,660.1	12,660	111											
12,855.0	12,855	114											
12,979.0	12,979	111											
13,169.9	13,169	111											
13,299.9	13,299	114											
13,490.2	13,490	111											
13,620.1	13,620	111											
13,893.2	13,893	111											

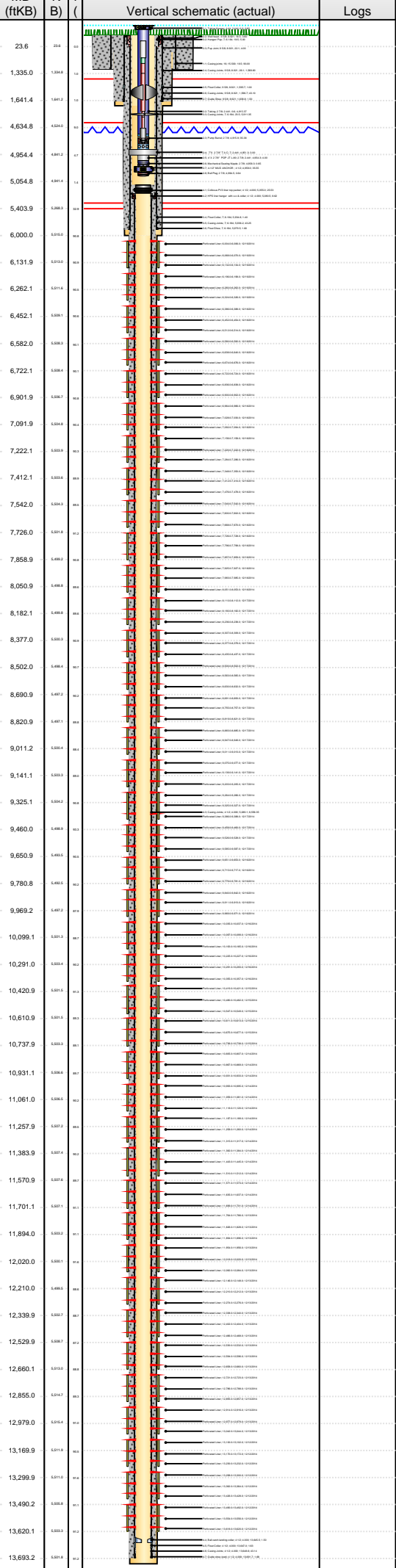


Lease Review All - Frac Summary

Well Name: HORSETAIL 29G-2012B

API Number 051233880400	WPC ID 1CO0761129	Well Permit Number	Field Name Wildcat	County Weld	State CO
Well Configuration Type Lateral/Horizontal	Orig KB Elv (ft) 4,712.50	Ground Elevation (ft) 4,694.00	Casing Flange Elevation (ft)	Tubing Head Elevation (ft)	Total Depth (ftKB) 13,700.0
Original Spud Date 10/19/2014	Completion Date 12/19/2014	Asset Group Redtail	Responsible Engineer Charles Ohlson	N/S Dist (ft) 2,328.0	N/S Ref FNL
				E/W Dist (ft) 1,888.0	E/W Ref FEL
Lot	Quarter 1 SW	Quarter 2 NE	Quarter 3	Quarter 4	Section 29
					Section Suffix
					Section Type
					Township 10 N
					Township N/S Dir
					Range 57 W
					Range E/W Dir
					Meridian

Lateral/Horizontal - Original Hole, 3/6/2015 10:40:31 AM					
Item Des	OD (in)	ID (in)	Len (ft)	Top (ftKB)	Btm (ftKB)
4-1/2" MUD ANCHOR	4 1/2		35.55	4,959.0	4,994.5
Bull Plug	2 7/8		0.64	4,994.5	4,995.2



Rod Strings

Special on 1/19/2015 06:00

Rod Description Special	Run Date 1/19/2015	Pull Date		
Item Des	OD (in)	Len (ft)	Top (ftKB)	Btm (ftKB)
Polished Rod	1 1/2	36.00	22.0	58.0
KD PONY ROD	7/8	2.00	58.0	60.0
7/8" KD ROD W/FH SM COUPLINGS	7/8	1,275.00	60.0	1,335.0
7/8" KD RODS/X2.5 CHANNEL XL 10 PER ROD GUIDED	7/8	1,000.00	1,335.0	2,335.0
3/4"KD X2.5 KING COBRA 4-PER ROD-GUIDED	3/4	1,100.00	2,335.0	3,435.0
4/3" KD ROD W/FH SM COUPLINGS	3/4	1,200.00	3,435.0	4,635.0
Sinker Bar	1 1/2	300.00	4,635.0	4,935.0
Rod Pump/Plunger	2 1/4	6.00	4,935.0	4,941.0

Other Strings

Set Depth (ftKB)	Comment	Run Date	Pull Date
------------------	---------	----------	-----------

Item Des	OD (in)	Len (ft)	Top (ftKB)	Btm (ftKB)
----------	---------	----------	------------	------------

Other In Hole

Des	OD (in)	Run Date	Pull Date	Top (ftKB)	Btm (ftKB)
CFP	4	12/19/2014	12/21/2014	5,192.0	5,194.0
CFP	4	12/19/2014	12/21/2014	6,164.0	6,166.0
CFP	4	12/19/2014	12/21/2014	6,348.0	6,350.0
CFP	4	12/18/2014	12/21/2014	6,548.0	6,550.0
CFP	4	12/18/2014	12/21/2014	6,700.0	6,702.0
CFP	4	12/18/2014	12/21/2014	6,922.0	6,924.0
CFP	4	12/18/2014	12/21/2014	7,124.0	7,126.0
CFP	4	12/18/2014	12/21/2014	7,326.0	7,328.0
CFP	4	12/18/2014	12/21/2014	7,508.0	7,510.0
CFP	4	12/18/2014	12/21/2014	7,700.0	7,702.0
CFP	4	12/18/2014	12/21/2014	7,892.0	7,894.0
CFP	4	12/17/2014	12/21/2014	8,083.0	8,085.0
CFP	4	12/17/2014	12/21/2014	8,275.0	8,275.0
CFP	4	12/17/2014	12/21/2014	8,467.0	8,469.0
CFP	4	12/17/2014	12/21/2014	8,655.0	8,657.0
CFP	4	12/17/2014	12/21/2014	8,851.0	8,853.0
CFP	4	12/17/2014	12/21/2014	9,053.0	9,055.0
CFP	4	12/17/2014	12/21/2014	9,235.0	9,237.0
CFP	4	12/17/2014	12/21/2014	9,398.0	9,400.0
CFP	4	12/17/2014	12/21/2014	9,619.0	9,621.0
CFP	4	12/16/2014	12/21/2014	9,811.0	9,813.0
CFP	4	12/16/2014	12/21/2014	10,003.0	10,005.0
CFP	4	12/16/2014	12/21/2014	10,195.0	10,197.0
CFP	4	12/16/2014	12/21/2014	10,387.0	10,389.0
CFP	4	12/15/2014	12/21/2014	10,581.0	10,583.0
CFP	4	12/15/2014	12/21/2014	10,771.0	10,773.0
CFP	4	12/14/2014	12/21/2014	10,963.0	10,965.0
CFP	4	12/14/2014	12/21/2014	11,155.0	11,157.0
CFP	4	12/14/2014	12/21/2014	11,347.0	11,349.0
CFP	4	12/14/2014	12/21/2014	11,537.0	11,539.0
CFP	4	12/14/2014	12/21/2014	11,730.0	11,732.0
CFP	4	12/13/2014	12/21/2014	11,922.0	11,924.0
CFP	4	12/13/2014	12/21/2014	12,114.0	12,116.0
CFP	4	12/13/2014	12/21/2014	12,311.0	12,313.0
CFP	4	12/13/2014	12/21/2014	12,494.0	12,496.0
CFP	4	12/13/2014	12/21/2014	12,692.0	12,694.0
CFP	4	12/13/2014	12/21/2014	12,882.0	12,884.0
CFP	4	12/13/2014	12/21/2014	13,074.0	13,076.0
CFP	4	12/12/2014	12/21/2014	13,266.0	13,268.0
CFP	4	12/12/2014	12/21/2014	13,458.0	13,460.0

Bottom Hole Cores

Date	Core #	Top (ftKB)	Btm (ftKB)	Recov (ft)
------	--------	------------	------------	------------