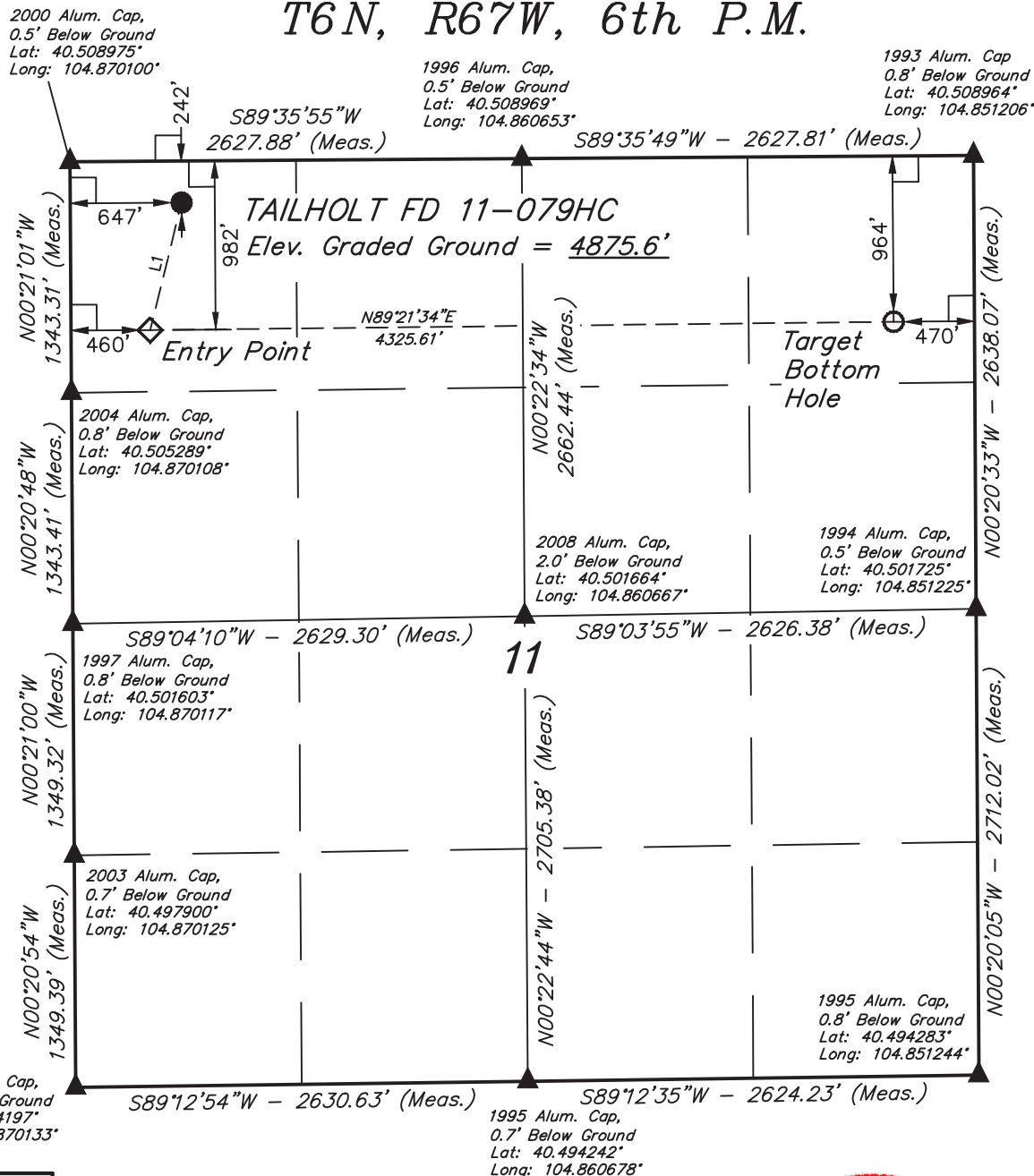


LEGEND:

- = 90° SYMBOL
- = PROPOSED WELLHEAD.
- ◆ = ENTRY POINT.
- = TARGET BOTTOM HOLE.
- ▲ = SECTION CORNERS LOCATED.

T6N, R67W, 6th P.M.

LINE TABLE		
LINE	DIRECTION	LENGTH
L1	S13°49'23"W	763.78'



PDOP = 1.8

NAD 83 (TARGET BOTTOM HOLE)	
LATITUDE = 40°30'22.75" (40.506319)	
LONGITUDE = 104°51'10.45" (104.852903)	
NAD 27 (TARGET BOTTOM HOLE)	
LATITUDE = 40°30'22.82" (40.506339)	
LONGITUDE = 104°51'08.56" (104.852378)	
NAD 83 (ENTRY POINT)	
LATITUDE = 40°30'22.61" (40.506281)	
LONGITUDE = 104°52'06.43" (104.868453)	
NAD 27 (ENTRY POINT)	
LATITUDE = 40°30'22.68" (40.506300)	
LONGITUDE = 104°52'04.53" (104.867925)	



NAD 83 (SURFACE LOCATION)	
LATITUDE = 40°30'29.92" (40.508311)	
LONGITUDE = 104°52'04.00" (104.867778)	
NAD 27 (SURFACE LOCATION)	
LATITUDE = 40°30'30.00" (40.508333)	
LONGITUDE = 104°52'02.10" (104.867250)	

CERTIFICATE

THIS IS TO CERTIFY THAT THE ABOVE PLAT WAS PREPARED FROM FIELD NOTES OF ACTUAL SURVEYS MADE BY ME OR UNDER MY SUPERVISION AND THAT THE SAME ARE TRUE AND CORRECT TO THE BEST OF MY KNOWLEDGE AND BELIEF.



BASIS OF BEARINGS
BASIS OF BEARINGS IS A G.P.S. OBSERVATION
BASIS OF ELEVATION

USGS COOPERATIVE BASE NETWORK CONTROL STATION, DESIGNATION 'VERMILYEA'. NGS DATA SHEET LISTS THE NAVD 88 ELEVATION AS BEING 5026 FEET



GREAT WESTERN OIL & GAS COMPANY

TAILHOLT FD 11-079HC
NW 1/4 NW 1/4, SECTION 11, T6N, R67W, 6th P.M.
WELD COUNTY, COLORADO

SURVEYED BY: GREG WEIMER, C.J.	DATE: 10-23-14
DRAWN BY: J.W.	DATE DRAWN: 07-26-12
SCALE: 1" = 1000'	REVISED: 11-07-14

WELL LOCATION PLAT



UELS, LLC
Corporate Office * 85 South 200 East
Vernal, UT 84078 * (435) 789-1017