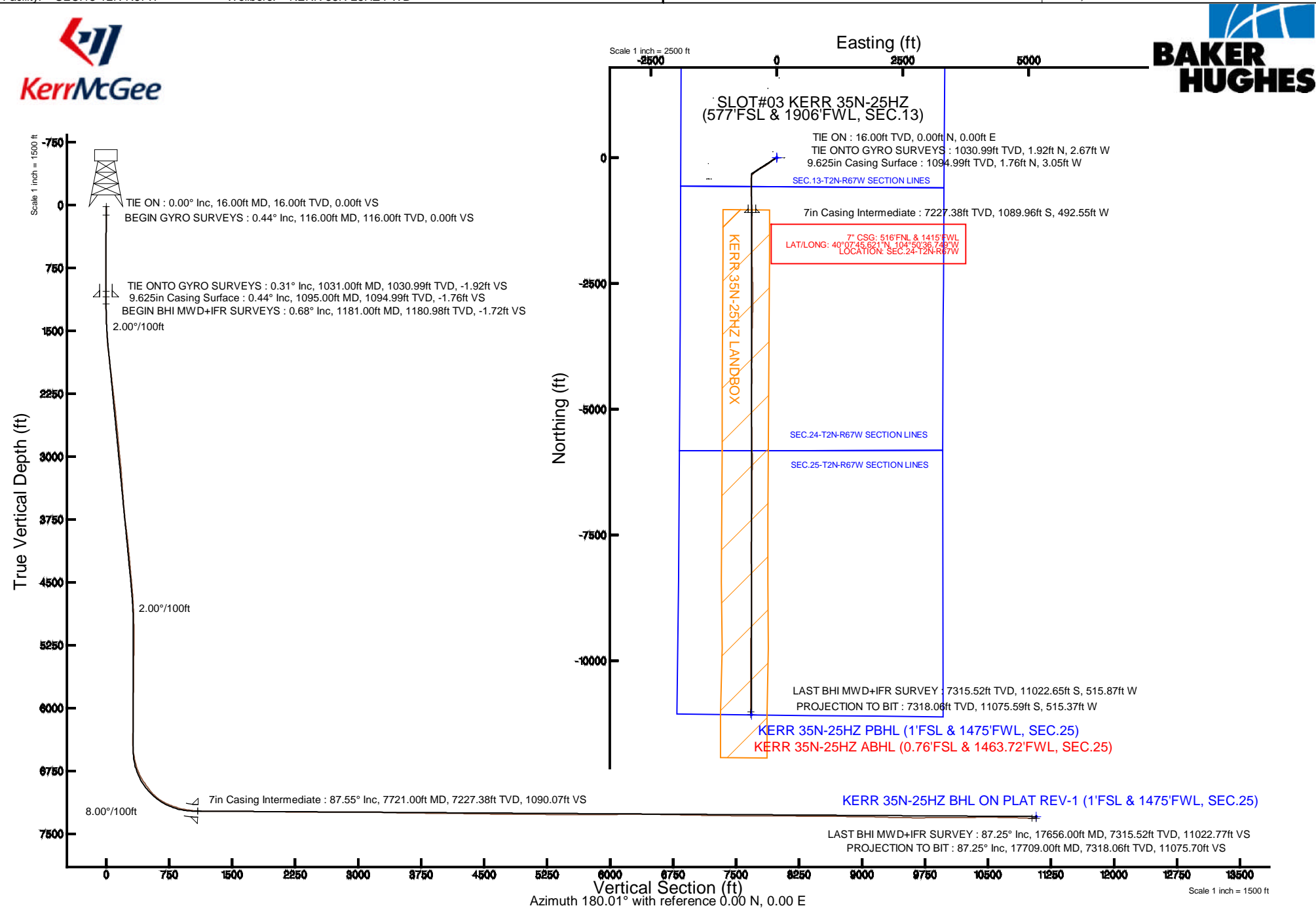


Location:	COLORADO	Slot:	SLOT#03 KERR 35N-25HZ (577'FSL & 1906'FWL, SEC.13)
Field:	WELD COUNTY (KERR MCGEE)	Well:	KERR 35N-25HZ
Facility:	SEC.13-T2N-R67W	Wellbore:	KERR 35N-25HZ PWB

True vertical depths are referenced to XTREME 24 (16KB) (RKB)	Grid System: NAD83 / Lambert Colorado SP, Northern Zone (501), US feet
Measured depths are referenced to XTREME 24 (16KB) (RKB)	North Reference: True north
XTREME 24 (16KB) (RKB) to Mean Sea Level: 4899 feet	Scale: True distance
Mean Sea Level to Mud line (At Slot: SLOT#03 KERR 35N-25HZ (577FSL & 1906FWL, SEC.13): 0 feet	Depths are in feet
Coordinates are in feet referenced to Slot	Created by: robiale01 on 1/20/2015



REFERENCE WELLPATH IDENTIFICATION			
Operator	KERR-MCGEE OIL & GAS ONSHORE LP (LAMBERT STATE PLANE COORD)	Slot	SLOT#03 KERR 35N-25HZ (577'FSL & 1906'FWL, SEC.13)
Area	COLORADO	Well	KERR 35N-25HZ
Field	WELD COUNTY (KERR MCGEE)	Wellbore	KERR 35N-25HZ AWB <116-17709>
Facility	SEC.13-T2N-R67W		

REPORT SETUP INFORMATION			
Projection System	NAD83 / Lambert Colorado SP, Northern Zone (501), US feet	Software System	WellArchitect® 4.0.0
North Reference	True	User	Robiale01
Scale	0.999959	Report Generated	1/20/2015 at 7:31:40 AM
Convergence at slot	n/a	Database/Source file	WellArchitectDB/KERR_35N-25HZ_AWB_116-17709_.xml

WELLPATH LOCATION						
	Local coordinates		Grid coordinates		Geographic coordinates	
	North[ft]	East[ft]	Easting[US ft]	Northing[US ft]	Latitude	Longitude
Slot Location	-374.76	-1733.66	3184043.19	1291735.01	40°07'56.392"N	104°50'30.408"W
Facility Reference Pt			3185773.91	1292122.74	40°08'00.096"N	104°50'08.088"W
Field Reference Pt			3197771.84	1268891.29	40°04'09.600"N	104°47'36.000"W

WELLPATH DATUM			
Calculation method	Minimum curvature	XTREME 24 (16'KB) (RKB) to Facility Vertical Datum	4899.00ft
Horizontal Reference Pt	Slot	XTREME 24 (16'KB) (RKB) to Mean Sea Level	4899.00ft
Vertical Reference Pt	XTREME 24 (16'KB) (RKB)	XTREME 24 (16'KB) (RKB) to Mud Line at Slot (SLOT#03 KERR 35N-25HZ (577'FSL & 1906'FWL, SEC.13))	4899.00ft
MD Reference Pt	XTREME 24 (16'KB) (RKB)	Section Origin	N 0.00, E 0.00 ft
Field Vertical Reference	Mean Sea Level	Section Azimuth	182.66°

REFERENCE WELLPATH IDENTIFICATION			
Operator	KERR-MCGEE OIL & GAS ONSHORE LP (LAMBERT STATE PLANE COORD)	Slot	SLOT#03 KERR 35N-25HZ (577'FSL & 1906'FWL, SEC.13)
Area	COLORADO	Well	KERR 35N-25HZ
Field	WELD COUNTY (KERR MCGEE)	Wellbore	KERR 35N-25HZ AWB <116-17709>
Facility	SEC.13-T2N-R67W		

WELLPATH DATA (149 stations) † = interpolated/extrapolated station										
MD [ft]	Inclination [°]	Azimuth [°]	TVD [ft]	Vert Sect [ft]	North [ft]	East [ft]	Latitude	Longitude	DLS [°/100ft]	Comments
0.00†	0.000	270.553	0.00	0.00	0.00	0.00	40°07'56.392°N	104°50'30.408°W	0.00	
16.00	0.000	270.553	16.00	0.00	0.00	0.00	40°07'56.392°N	104°50'30.408°W	0.00	TIE ON
116.00	0.443	270.553	116.00	0.01	0.00	-0.39	40°07'56.392°N	104°50'30.413°W	0.44	BEGIN GYRO SURVEYS
216.00	0.234	359.080	216.00	-0.18	0.21	-0.78	40°07'56.394°N	104°50'30.418°W	0.50	
316.00	0.602	359.598	315.99	-0.90	0.94	-0.78	40°07'56.401°N	104°50'30.418°W	0.37	
416.00	0.269	321.969	415.99	-1.61	1.65	-0.93	40°07'56.408°N	104°50'30.420°W	0.42	
516.00	0.181	261.709	515.99	-1.75	1.81	-1.23	40°07'56.410°N	104°50'30.424°W	0.24	
616.00	0.093	89.453	615.99	-1.73	1.79	-1.31	40°07'56.410°N	104°50'30.425°W	0.27	
716.00	0.140	34.172	715.99	-1.84	1.89	-1.16	40°07'56.411°N	104°50'30.423°W	0.12	
816.00	0.390	276.590	815.99	-1.96	2.03	-1.43	40°07'56.412°N	104°50'30.426°W	0.47	
916.00	0.352	274.111	915.99	-2.00	2.09	-2.07	40°07'56.413°N	104°50'30.435°W	0.04	
1016.00	0.316	236.658	1015.99	-1.84	1.97	-2.61	40°07'56.411°N	104°50'30.442°W	0.22	
1031.00	0.306	232.356	1030.99	-1.79	1.92	-2.67	40°07'56.411°N	104°50'30.442°W	0.17	TIE ONTO GYRO SURVEYS
1181.00	0.680	272.890	1180.98	-1.54	1.72	-3.88	40°07'56.409°N	104°50'30.458°W	0.33	BEGIN BHI MWD+IFR SURVEYS
1275.00	2.140	233.110	1274.95	-0.42	0.69	-5.84	40°07'56.399°N	104°50'30.483°W	1.78	
1369.00	3.640	235.540	1368.83	2.50	-2.05	-9.71	40°07'56.372°N	104°50'30.533°W	1.60	
1463.00	5.520	244.160	1462.53	6.46	-5.71	-16.24	40°07'56.336°N	104°50'30.617°W	2.12	
1557.00	7.330	244.730	1555.93	11.42	-10.24	-25.73	40°07'56.291°N	104°50'30.739°W	1.93	
1651.00	9.870	240.540	1648.87	18.52	-16.76	-38.17	40°07'56.226°N	104°50'30.899°W	2.78	
1745.00	12.030	236.880	1741.15	28.53	-26.08	-53.39	40°07'56.134°N	104°50'31.095°W	2.41	
1839.00	11.700	236.520	1833.14	39.88	-36.69	-69.54	40°07'56.029°N	104°50'31.303°W	0.36	
1933.00	11.200	232.730	1925.27	51.36	-47.48	-84.76	40°07'55.923°N	104°50'31.499°W	0.96	
2029.00	10.980	231.860	2019.48	63.32	-58.77	-99.37	40°07'55.811°N	104°50'31.687°W	0.29	
2121.00	10.490	231.020	2109.87	74.61	-69.45	-112.77	40°07'55.706°N	104°50'31.860°W	0.56	
2212.00	9.930	229.440	2199.43	85.49	-79.76	-125.17	40°07'55.604°N	104°50'32.019°W	0.69	
2303.00	9.750	228.460	2289.09	96.24	-89.97	-136.90	40°07'55.503°N	104°50'32.170°W	0.27	
2394.00	10.760	230.600	2378.64	107.30	-100.47	-149.23	40°07'55.399°N	104°50'32.329°W	1.19	
2486.00	9.670	238.300	2469.18	117.42	-109.99	-162.44	40°07'55.305°N	104°50'32.499°W	1.90	
2578.00	10.740	238.520	2559.72	126.59	-118.52	-176.33	40°07'55.221°N	104°50'32.678°W	1.16	
2670.00	10.290	237.340	2650.18	136.15	-127.43	-190.56	40°07'55.133°N	104°50'32.861°W	0.54	
2762.00	10.000	236.230	2740.74	145.65	-136.31	-204.11	40°07'55.045°N	104°50'33.036°W	0.38	
2854.00	9.500	236.000	2831.41	154.93	-144.99	-217.05	40°07'54.959°N	104°50'33.202°W	0.55	
2945.00	9.160	233.450	2921.21	163.99	-153.51	-229.09	40°07'54.875°N	104°50'33.357°W	0.59	
3037.00	10.430	235.210	3011.87	173.68	-162.62	-241.81	40°07'54.785°N	104°50'33.521°W	1.42	
3129.00	9.880	234.640	3102.42	183.61	-171.94	-255.09	40°07'54.693°N	104°50'33.692°W	0.61	
3221.00	10.500	247.060	3192.98	192.10	-179.77	-269.25	40°07'54.615°N	104°50'33.874°W	2.48	
3312.00	10.070	246.530	3282.52	199.18	-186.17	-284.18	40°07'54.552°N	104°50'34.067°W	0.48	
3404.00	9.520	244.500	3373.18	206.32	-192.65	-298.43	40°07'54.488°N	104°50'34.250°W	0.71	
3496.00	9.020	242.610	3463.98	213.52	-199.25	-311.70	40°07'54.423°N	104°50'34.421°W	0.64	
3587.00	8.470	238.650	3553.92	220.84	-206.01	-323.75	40°07'54.356°N	104°50'34.576°W	0.90	
3680.00	9.930	239.790	3645.72	229.03	-213.61	-336.53	40°07'54.281°N	104°50'34.741°W	1.58	
3773.00	11.730	234.880	3737.06	239.17	-223.09	-351.20	40°07'54.187°N	104°50'34.929°W	2.17	
3866.00	11.350	233.070	3828.18	250.80	-234.02	-366.25	40°07'54.079°N	104°50'35.123°W	0.56	
3959.00	12.010	231.670	3919.26	262.98	-245.52	-381.15	40°07'53.966°N	104°50'35.315°W	0.77	
4052.00	10.290	237.450	4010.50	274.11	-256.00	-395.74	40°07'53.862°N	104°50'35.503°W	2.20	

## REFERENCE WELLPATH IDENTIFICATION

Operator	KERR-MCGEE OIL & GAS ONSHORE LP (LAMBERT STATE PLANE COORD)	Slot	SLOT#03 KERR 35N-25HZ (577'FSL & 1906'FWL, SEC.13)
Area	COLORADO	Well	KERR 35N-25HZ
Field	WELD COUNTY (KERR MCGEE)	Wellbore	KERR 35N-25HZ AWB <116-17709>
Facility	SEC.13-T2N-R67W		

## WELLPATH DATA (149 stations)

† = interpolated/extrapolated station

MD [ft]	Inclination [°]	Azimuth [°]	TVD [ft]	Vert Sect [ft]	North [ft]	East [ft]	Latitude	Longitude	DLS [°/100ft]	Comments
4146.00	9.970	237.120	4103.04	283.69	-264.93	-409.66	40°07'53.774"N	104°50'35.682"W	0.35	
4238.00	9.540	235.290	4193.71	292.94	-273.59	-422.61	40°07'53.688"N	104°50'35.849"W	0.58	
4331.00	8.660	234.230	4285.54	301.97	-282.08	-434.63	40°07'53.604"N	104°50'36.004"W	0.96	
4424.00	8.050	230.020	4377.55	310.74	-290.35	-445.30	40°07'53.523"N	104°50'36.141"W	0.93	
4518.00	7.500	226.340	4470.68	319.63	-298.82	-454.78	40°07'53.439"N	104°50'36.263"W	0.79	
4611.00	7.150	225.670	4562.93	328.26	-307.05	-463.31	40°07'53.358"N	104°50'36.373"W	0.39	
4704.00	6.380	234.990	4655.28	335.65	-314.06	-471.68	40°07'53.288"N	104°50'36.481"W	1.44	
4791.00	4.880	221.680	4741.86	341.48	-319.60	-478.10	40°07'53.234"N	104°50'36.563"W	2.27	
4962.00	1.200	172.840	4912.61	348.90	-326.81	-482.72	40°07'53.162"N	104°50'36.623"W	2.45	
5132.00	1.390	155.500	5082.57	352.48	-330.45	-481.64	40°07'53.126"N	104°50'36.609"W	0.25	
5217.00	0.640	327.130	5167.56	353.01	-330.99	-481.47	40°07'53.121"N	104°50'36.607"W	2.38	
5387.00	0.850	349.340	5337.55	351.01	-328.96	-482.22	40°07'53.141"N	104°50'36.616"W	0.21	
5558.00	0.650	351.460	5508.53	348.83	-326.75	-482.60	40°07'53.163"N	104°50'36.621"W	0.12	
5728.00	0.630	8.760	5678.52	346.95	-324.87	-482.60	40°07'53.182"N	104°50'36.621"W	0.11	
5897.00	0.710	322.870	5847.51	345.23	-323.12	-483.09	40°07'53.199"N	104°50'36.627"W	0.31	
6067.00	1.060	313.780	6017.49	343.38	-321.19	-484.86	40°07'53.218"N	104°50'36.650"W	0.22	
6238.00	0.770	310.780	6188.47	341.63	-319.35	-486.87	40°07'53.236"N	104°50'36.676"W	0.17	
6451.00	0.800	295.030	6401.45	340.18	-317.78	-489.31	40°07'53.252"N	104°50'36.707"W	0.10	
6536.00	3.080	195.560	6486.41	342.18	-319.73	-490.46	40°07'53.232"N	104°50'36.722"W	3.89	
6621.00	11.760	193.390	6570.61	352.94	-330.38	-493.08	40°07'53.127"N	104°50'36.756"W	10.22	
6706.00	13.140	190.280	6653.61	371.03	-348.31	-496.81	40°07'52.950"N	104°50'36.804"W	1.80	
6791.00	20.040	189.740	6735.03	395.09	-372.20	-501.00	40°07'52.714"N	104°50'36.858"W	8.12	
6875.00	28.430	188.510	6811.56	429.32	-406.22	-506.41	40°07'52.378"N	104°50'36.928"W	10.01	
6960.00	33.230	179.500	6884.56	472.76	-449.57	-509.20	40°07'51.949"N	104°50'36.964"W	7.82	
7045.00	37.480	180.010	6953.87	521.87	-498.75	-509.00	40°07'51.463"N	104°50'36.961"W	5.01	
7130.00	41.560	182.740	7019.43	575.92	-552.80	-510.36	40°07'50.929"N	104°50'36.978"W	5.22	
7215.00	52.110	179.650	7077.51	637.79	-614.68	-511.50	40°07'50.318"N	104°50'36.993"W	12.69	
7300.00	62.800	177.730	7123.17	709.16	-686.20	-509.79	40°07'49.611"N	104°50'36.971"W	12.72	
7385.00	67.790	177.570	7158.68	786.06	-763.33	-506.63	40°07'48.849"N	104°50'36.930"W	5.87	
7470.00	71.990	176.160	7187.90	865.45	-843.01	-502.25	40°07'48.061"N	104°50'36.874"W	5.18	
7555.00	80.250	177.880	7208.28	947.49	-925.34	-497.99	40°07'47.248"N	104°50'36.819"W	9.91	
7641.00	81.780	177.840	7221.71	1032.14	-1010.23	-494.81	40°07'46.409"N	104°50'36.778"W	1.78	
7669.00	86.330	178.310	7224.61	1059.89	-1038.05	-493.88	40°07'46.134"N	104°50'36.766"W	16.34	
7721.00†	87.552	178.754	7227.38	1111.68	-1089.96	-492.55	40°07'45.621"N	104°50'36.749"W	2.50	7" CASING POINT
7812.00	89.690	179.530	7229.57	1202.47	-1180.92	-491.19	40°07'44.722"N	104°50'36.731"W	2.50	
7898.00	89.470	179.830	7230.20	1288.35	-1266.91	-490.71	40°07'43.872"N	104°50'36.725"W	0.43	
7982.00	89.940	180.420	7230.64	1372.27	-1350.91	-490.89	40°07'43.042"N	104°50'36.728"W	0.90	
8152.00	89.780	179.190	7231.05	1542.05	-1520.91	-490.31	40°07'41.362"N	104°50'36.720"W	0.73	
8323.00	89.090	180.950	7232.74	1712.86	-1691.89	-490.52	40°07'39.673"N	104°50'36.723"W	1.11	
8493.00	89.130	179.250	7235.38	1882.67	-1861.86	-490.82	40°07'37.993"N	104°50'36.727"W	1.00	
8663.00	89.460	180.610	7237.47	2052.46	-2031.85	-490.61	40°07'36.313"N	104°50'36.724"W	0.82	
8833.00	89.210	178.340	7239.44	2222.17	-2201.82	-489.05	40°07'34.633"N	104°50'36.704"W	1.34	
9004.00	89.290	178.040	7241.68	2392.63	-2372.72	-483.65	40°07'32.945"N	104°50'36.634"W	0.18	
9174.00	89.770	180.100	7243.08	2562.28	-2542.68	-480.89	40°07'31.265"N	104°50'36.599"W	1.24	
9344.00	90.030	179.430	7243.37	2732.07	-2712.68	-480.20	40°07'29.585"N	104°50'36.590"W	0.42	

REFERENCE WELLPATH IDENTIFICATION			
Operator	KERR-MCGEE OIL & GAS ONSHORE LP (LAMBERT STATE PLANE COORD)	Slot	SLOT#03 KERR 35N-25HZ (577'FSL & 1906'FWL, SEC.13)
Area	COLORADO	Well	KERR 35N-25HZ
Field	WELD COUNTY (KERR MCGEE)	Wellbore	KERR 35N-25HZ AWB <116-17709>
Facility	SEC.13-T2N-R67W		

WELLPATH DATA (149 stations)										
MD [ft]	Inclination [°]	Azimuth [°]	TVD [ft]	Vert Sect [ft]	North [ft]	East [ft]	Latitude	Longitude	DLS [°/100ft]	Comments
9514.00	89.930	180.120	7243.43	2901.85	-2882.67	-479.53	40°07'27.905"N	104°50'36.581"W	0.41	
9684.00	90.430	180.900	7242.90	3071.73	-3052.67	-481.04	40°07'26.225"N	104°50'36.600"W	0.54	
9769.00	89.650	181.360	7242.84	3156.69	-3137.65	-482.72	40°07'25.385"N	104°50'36.622"W	1.07	
9854.00	89.870	181.980	7243.19	3241.68	-3222.61	-485.19	40°07'24.546"N	104°50'36.654"W	0.77	
9939.00	88.190	181.290	7244.63	3326.65	-3307.56	-487.62	40°07'23.706"N	104°50'36.685"W	2.14	
10110.00	88.550	181.640	7249.50	3497.54	-3478.43	-491.99	40°07'22.018"N	104°50'36.741"W	0.29	
10293.00	89.600	180.520	7252.45	3680.44	-3661.37	-495.44	40°07'20.210"N	104°50'36.786"W	0.84	
10475.00	89.410	180.140	7254.02	3862.29	-3843.36	-496.49	40°07'18.411"N	104°50'36.799"W	0.23	
10659.00	89.600	180.550	7255.61	4046.13	-4027.35	-497.59	40°07'16.593"N	104°50'36.813"W	0.25	
10843.00	88.980	179.620	7257.89	4229.92	-4211.33	-497.87	40°07'14.775"N	104°50'36.817"W	0.61	
11026.00	89.120	180.050	7260.93	4412.68	-4394.31	-497.34	40°07'12.967"N	104°50'36.810"W	0.25	
11210.00	89.110	181.020	7263.77	4596.52	-4578.28	-499.06	40°07'11.149"N	104°50'36.832"W	0.53	
11393.00	89.170	180.010	7266.52	4779.37	-4761.25	-500.70	40°07'09.341"N	104°50'36.853"W	0.55	
11577.00	90.190	180.180	7267.54	4963.18	-4945.24	-501.01	40°07'07.523"N	104°50'36.857"W	0.56	
11761.00	89.570	179.600	7267.93	5146.97	-5129.24	-500.65	40°07'05.704"N	104°50'36.852"W	0.46	
11947.00	89.720	179.110	7269.08	5332.65	-5315.22	-498.56	40°07'03.866"N	104°50'36.825"W	0.28	
12133.00	90.030	179.350	7269.49	5518.32	-5501.20	-496.06	40°07'02.028"N	104°50'36.793"W	0.21	
12319.00	89.650	178.680	7270.01	5703.94	-5687.17	-492.86	40°07'00.191"N	104°50'36.752"W	0.41	
12412.00	89.550	179.060	7270.66	5796.73	-5780.15	-491.03	40°06'59.272"N	104°50'36.728"W	0.42	
12599.00	90.670	179.000	7270.30	5983.35	-5967.12	-487.86	40°06'57.424"N	104°50'36.688"W	0.60	
12692.00	90.690	180.200	7269.19	6076.21	-6060.11	-487.21	40°06'56.505"N	104°50'36.679"W	1.29	
12870.00	91.230	181.830	7266.21	6254.10	-6238.05	-490.37	40°06'54.747"N	104°50'36.720"W	0.96	
12955.00	90.370	179.760	7265.02	6339.05	-6323.03	-491.55	40°06'53.907"N	104°50'36.735"W	2.64	
13040.00	89.720	180.590	7264.96	6423.96	-6408.03	-491.81	40°06'53.067"N	104°50'36.738"W	1.24	
13125.00	88.640	181.120	7266.17	6508.91	-6493.01	-493.07	40°06'52.227"N	104°50'36.754"W	1.42	
13211.00	88.540	180.320	7268.29	6594.84	-6578.98	-494.15	40°06'51.378"N	104°50'36.768"W	0.94	
13381.00	88.950	180.470	7272.01	6764.66	-6748.93	-495.33	40°06'49.698"N	104°50'36.783"W	0.26	
13551.00	88.760	180.420	7275.41	6934.50	-6918.89	-496.65	40°06'48.019"N	104°50'36.800"W	0.12	
13722.00	89.010	180.480	7278.74	7105.34	-7089.85	-497.99	40°06'46.329"N	104°50'36.818"W	0.15	
13892.00	89.130	181.120	7281.50	7275.23	-7259.81	-500.36	40°06'44.650"N	104°50'36.848"W	0.38	
14062.00	89.480	180.680	7283.56	7445.13	-7429.78	-503.03	40°06'42.970"N	104°50'36.882"W	0.33	
14232.00	89.630	181.110	7284.88	7615.05	-7599.75	-505.69	40°06'41.290"N	104°50'36.916"W	0.27	
14403.00	90.000	180.320	7285.43	7785.94	-7770.74	-507.82	40°06'39.601"N	104°50'36.944"W	0.51	
14573.00	90.620	180.160	7284.51	7955.79	-7940.73	-508.53	40°06'37.921"N	104°50'36.953"W	0.38	
14658.00	89.470	178.600	7284.45	8040.64	-8025.72	-507.61	40°06'37.081"N	104°50'36.941"W	2.28	
14829.00	87.970	178.650	7288.27	8211.17	-8196.63	-503.51	40°06'35.392"N	104°50'36.888"W	0.88	
14914.00	89.120	180.520	7290.42	8296.02	-8281.59	-502.90	40°06'34.552"N	104°50'36.880"W	2.58	
15084.00	89.550	180.130	7292.40	8465.86	-8451.58	-503.86	40°06'32.873"N	104°50'36.893"W	0.34	
15254.00	90.120	179.280	7292.89	8635.63	-8621.57	-502.99	40°06'31.193"N	104°50'36.881"W	0.60	
15425.00	89.470	180.610	7293.50	8806.44	-8792.57	-502.82	40°06'29.503"N	104°50'36.879"W	0.87	
15510.00	90.030	177.550	7293.87	8891.26	-8877.54	-501.46	40°06'28.663"N	104°50'36.862"W	3.66	
15680.00	88.610	181.070	7295.89	9060.92	-9047.49	-499.41	40°06'26.984"N	104°50'36.835"W	2.23	
15850.00	88.370	180.930	7300.37	9230.79	-9217.40	-502.37	40°06'25.305"N	104°50'36.873"W	0.16	
15936.00	87.840	182.270	7303.21	9316.73	-9303.32	-504.77	40°06'24.455"N	104°50'36.904"W	1.67	
16021.00	89.380	182.330	7305.27	9401.70	-9388.23	-508.18	40°06'23.616"N	104°50'36.948"W	1.81	

REFERENCE WELLPATH IDENTIFICATION			
Operator	KERR-MCGEE OIL & GAS ONSHORE LP (LAMBERT STATE PLANE COORD)	Slot	SLOT#03 KERR 35N-25HZ (577'FSL & 1906'FWL, SEC.13)
Area	COLORADO	Well	KERR 35N-25HZ
Field	WELD COUNTY (KERR MCGEE)	Wellbore	KERR 35N-25HZ AWB <116-17709>
Facility	SEC.13-T2N-R67W		

WELLPATH DATA (149 stations)										
MD [ft]	Inclination [°]	Azimuth [°]	TVD [ft]	Vert Sect [ft]	North [ft]	East [ft]	Latitude	Longitude	DLS [°/100ft]	Comments
16191.00	88.860	182.040	7307.88	9571.67	-9558.08	-514.67	40°06'21.938"N	104°50'37.032"W	0.35	
16276.00	89.350	181.710	7309.21	9656.65	-9643.02	-517.45	40°06'21.098"N	104°50'37.067"W	0.69	
16360.00	90.930	181.280	7309.01	9740.63	-9726.99	-519.64	40°06'20.269"N	104°50'37.095"W	1.95	
16446.00	91.420	180.700	7307.24	9826.58	-9812.96	-521.12	40°06'19.419"N	104°50'37.115"W	0.88	
16531.00	91.180	180.080	7305.31	9911.49	-9897.94	-521.70	40°06'18.579"N	104°50'37.122"W	0.78	
16700.00	89.380	179.120	7304.49	10080.24	-10066.92	-520.52	40°06'16.909"N	104°50'37.107"W	1.21	
16867.00	90.150	179.970	7305.17	10246.98	-10233.91	-519.20	40°06'15.259"N	104°50'37.090"W	0.69	
16952.00	91.200	180.900	7304.17	10331.91	-10318.90	-519.84	40°06'14.419"N	104°50'37.098"W	1.65	
17038.00	90.700	180.600	7302.75	10417.85	-10404.88	-520.97	40°06'13.570"N	104°50'37.112"W	0.68	
17123.00	89.690	179.400	7302.46	10502.76	-10489.88	-520.97	40°06'12.730"N	104°50'37.112"W	1.85	
17293.00	89.160	179.530	7304.16	10672.48	-10659.86	-519.38	40°06'11.050"N	104°50'37.092"W	0.32	
17463.00	88.270	179.400	7307.98	10842.17	-10829.81	-517.79	40°06'09.371"N	104°50'37.071"W	0.53	
17656.00	87.250	179.460	7315.52	11034.72	-11022.65	-515.87	40°06'07.465"N	104°50'37.047"W	0.53	LAST BHI MWD+IFR SURVEY
17709.00	87.250	179.460	7318.06	11087.57	-11075.59	-515.37	40°06'06.942"N	104°50'37.040"W	0.00	PROJECTION TO BIT

HOLE & CASING SECTIONS - Ref Wellbore: KERR 35N-25HZ AWB <116-17709> Ref Wellpath: KERR 35N-25HZ AWP									
String/Diameter	Start MD [ft]	End MD [ft]	Interval [ft]	Start TVD [ft]	End TVD [ft]	Start N/S [ft]	Start E/W [ft]	End N/S [ft]	End E/W [ft]
13.5in Open Hole	16.00	1095.00	1079.00	16.00	1094.99	0.00	0.00	1.76	-3.05
9.625in Casing Surface	16.00	1095.00	1079.00	16.00	1094.99	0.00	0.00	1.76	-3.05
8.75in Open Hole	1095.00	7734.00	6639.00	1094.99	7227.90	1.76	-3.05	-1102.95	-492.28
7in Casing Intermediate	16.00	7721.00	7705.00	16.00	7227.38	0.00	0.00	-1089.96	-492.55
6.125in Open Hole	7734.00	17709.00	9975.00	7227.90	7318.06	-1102.95	-492.28	-11075.59	-515.37

WELLPATH COMPOSITION - Ref Wellbore: KERR 35N-25HZ AWB <116-17709> Ref Wellpath: KERR 35N-25HZ AWP				
Start MD [ft]	End MD [ft]	Positional Uncertainty Model	Log Name/Comment	Wellbore
16.00	1031.00	Generic gyro - northseeking (Standard)	VES GYRO SURVEYS <116-1031>	KERR 35N-25HZ AWB <116-17709>
1031.00	7669.00	NaviTrak (MAGCORR,IFR)	BHI NAVITRAK MWD+IFR 8 3/4" <1181-7669>	KERR 35N-25HZ AWB <116-17709>
7669.00	17656.00	NaviTrak (MAGCORR,IFR)	BHI NAVITRAK MWD+IFR 6 1/8" <7812-17656>	KERR 35N-25HZ AWB <116-17709>
17656.00	17709.00	Blind Drilling (std)	Projection to bit	KERR 35N-25HZ AWB <116-17709>

REFERENCE WELLPATH IDENTIFICATION			
Operator	KERR-MCGEE OIL & GAS ONSHORE LP (LAMBERT STATE PLANE COORD)	Slot	SLOT#03 KERR 35N-25HZ (577'FSL & 1906'FWL, SEC.13)
Area	COLORADO	Well	KERR 35N-25HZ
Field	WELD COUNTY (KERR MCGEE)	Wellbore	KERR 35N-25HZ AWB <116-17709>
Facility	SEC.13-T2N-R67W		

WELLPATH COMMENTS				
MD [ft]	Inclination [°]	Azimuth [°]	TVD [ft]	Comment
16.00	0.000	270.553	16.00	TIE ON
116.00	0.443	270.553	116.00	BEGIN GYRO SURVEYS
1031.00	0.306	232.356	1030.99	TIE ONTO GYRO SURVEYS
1181.00	0.680	272.890	1180.98	BEGIN BHI MWD+IFR SURVEYS
7721.00	87.552	178.754	7227.38	7" CASING POINT
17656.00	87.250	179.460	7315.52	LAST BHI MWD+IFR SURVEY
17709.00	87.250	179.460	7318.06	PROJECTION TO BIT