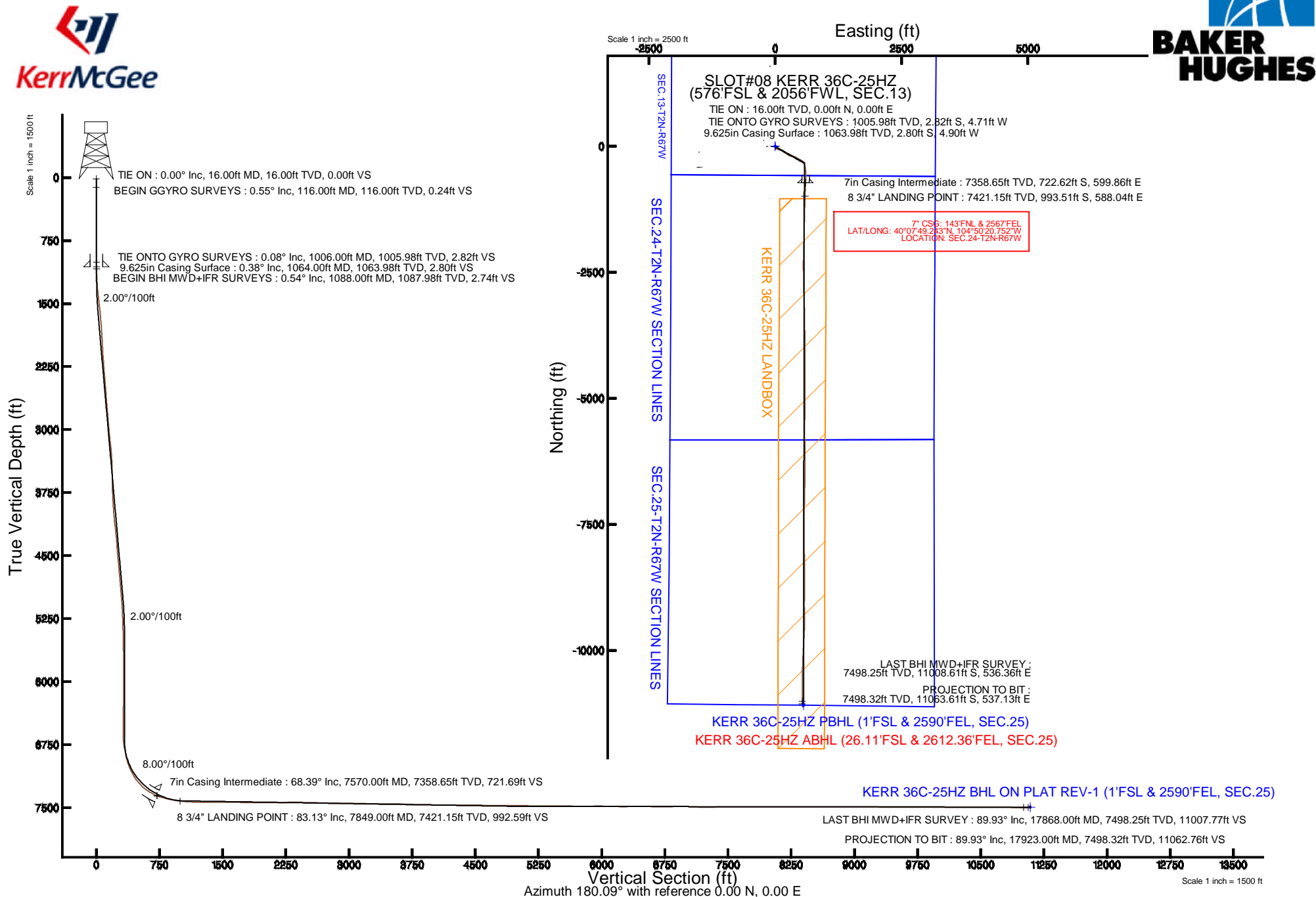


Location:	COLORADO	Slot:	SLOT#08 KERR 36C-25HZ (576'FSL & 2056'FWL, SEC.13)
Field:	WELD COUNTY (KERR MCGEE)	Well:	KERR 36C-25HZ
Facility:	SEC. 13-T2N-R67W	Wellbore:	KERR 36C-25HZ PWB

True vertical depths are referenced to XTREME 24 (16KB) (RKB)	Grid System: NAD83 / Lambert Colorado SP, Northern Zone (501), US feet
Measured depths are referenced to XTREME 24 (16KB) (RKB)	North Reference: True north
XTREME 24 (16KB) (RKB) to Mean Sea Level: 4899 feet	Scale: True distance
Mean Sea Level to Mud line (At Slot: SLOT#08 KERR 36C-25HZ (576FSL & 2056FWL, SEC.13): 0 feet	Depths are in feet
Coordinates are in feet referenced to Slot	Created by: robiale01 on 1/26/2015



REFERENCE WELLPATH IDENTIFICATION			
Operator	KERR-MCGEE OIL & GAS ONSHORE LP (LAMBERT STATE PLANE COORD)	Slot	SLOT#08 KERR 36C-25HZ (576'FSL & 2056'FWL, SEC.13)
Area	COLORADO	Well	KERR 36C-25HZ
Field	WELD COUNTY (KERR MCGEE)	Wellbore	KERR 36C-25HZ AWB <116-17923>
Facility	SEC.13-T2N-R67W		

REPORT SETUP INFORMATION			
Projection System	NAD83 / Lambert Colorado SP, Northern Zone (501), US feet	Software System	WellArchitect® 4.0.0
North Reference	True	User	Robiale01
Scale	0.999959	Report Generated	1/26/2015 at 10:35:01 AM
Convergence at slot	n/a	Database/Source file	WellArchitectDB/KERR_36C-25HZ_AWB_116-17923_.xml

WELLPATH LOCATION						
	Local coordinates		Grid coordinates		Geographic coordinates	
	North[ft]	East[ft]	Easting[US ft]	Northing[US ft]	Latitude	Longitude
Slot Location	-375.58	-1583.52	3184193.32	1291735.32	40°07'56.384"N	104°50'28.475"W
Facility Reference Pt			3185773.91	1292122.74	40°08'00.096"N	104°50'08.088"W
Field Reference Pt			3197771.84	1268891.29	40°04'09.600"N	104°47'36.000"W

WELLPATH DATUM			
Calculation method	Minimum curvature	XTREME 24 (16'KB) (RKB) to Facility Vertical Datum	4899.00ft
Horizontal Reference Pt	Slot	XTREME 24 (16'KB) (RKB) to Mean Sea Level	4899.00ft
Vertical Reference Pt	XTREME 24 (16'KB) (RKB)	XTREME 24 (16'KB) (RKB) to Mud Line at Slot (SLOT#08 KERR 36C-25HZ (576'FSL & 2056'FWL, SEC.13))	4899.00ft
MD Reference Pt	XTREME 24 (16'KB) (RKB)	Section Origin	N 0.00, E 0.00 ft
Field Vertical Reference	Mean Sea Level	Section Azimuth	177.22°

REFERENCE WELLPATH IDENTIFICATION			
Operator	KERR-MCGEE OIL & GAS ONSHORE LP (LAMBERT STATE PLANE COORD)	Slot	SLOT#08 KERR 36C-25HZ (576'FSL & 2056'FWL, SEC.13)
Area	COLORADO	Well	KERR 36C-25HZ
Field	WELD COUNTY (KERR MCGEE)	Wellbore	KERR 36C-25HZ AWB <116-17923>
Facility	SEC.13-T2N-R67W		

WELLPATH DATA (198 stations) † = interpolated/extrapolated station										
MD [ft]	Inclination [°]	Azimuth [°]	TVD [ft]	Vert Sect [ft]	North [ft]	East [ft]	Latitude	Longitude	DLS [°/100ft]	Comments
0.00†	0.000	239.890	0.00	0.00	0.00	0.00	40°07'56.384°N	104°50'28.475°W	0.00	
16.00	0.000	239.890	16.00	0.00	0.00	0.00	40°07'56.384°N	104°50'28.475°W	0.00	TIE ON
116.00	0.551	239.890	116.00	0.22	-0.24	-0.42	40°07'56.382°N	104°50'28.480°W	0.55	BEGIN GGYRO SURVEYS
216.00	0.505	277.583	215.99	0.36	-0.42	-1.27	40°07'56.380°N	104°50'28.491°W	0.34	
316.00	0.338	270.803	315.99	0.26	-0.36	-2.00	40°07'56.380°N	104°50'28.501°W	0.17	
416.00	0.512	245.501	415.99	0.41	-0.54	-2.70	40°07'56.379°N	104°50'28.510°W	0.25	
516.00	0.465	233.684	515.99	0.80	-0.97	-3.44	40°07'56.374°N	104°50'28.519°W	0.11	
616.00	0.556	218.512	615.98	1.39	-1.59	-4.06	40°07'56.368°N	104°50'28.527°W	0.16	
716.00	0.404	223.202	715.98	2.00	-2.23	-4.61	40°07'56.362°N	104°50'28.534°W	0.16	
816.00	0.186	193.266	815.98	2.40	-2.64	-4.89	40°07'56.358°N	104°50'28.538°W	0.26	
916.00	0.140	78.494	915.98	2.54	-2.77	-4.80	40°07'56.357°N	104°50'28.537°W	0.28	
1006.00	0.083	189.950	1005.98	2.58	-2.82	-4.71	40°07'56.356°N	104°50'28.536°W	0.21	TIE ONTO GYRO SURVEYS
1088.00	0.540	292.280	1087.98	2.48	-2.73	-5.08	40°07'56.357°N	104°50'28.540°W	0.69	BEGIN BHI MWD+IFR SURVEYS
1182.00	2.550	165.370	1181.95	4.34	-4.58	-4.96	40°07'56.339°N	104°50'28.539°W	3.09	
1276.00	4.840	152.500	1275.75	9.99	-10.13	-2.60	40°07'56.284°N	104°50'28.508°W	2.58	
1370.00	7.260	149.330	1369.22	18.84	-18.75	2.26	40°07'56.199°N	104°50'28.446°W	2.60	
1464.00	8.370	139.360	1462.35	29.49	-29.05	9.75	40°07'56.097°N	104°50'28.349°W	1.86	
1558.00	10.350	130.720	1555.09	40.71	-39.76	20.61	40°07'55.991°N	104°50'28.210°W	2.58	
1652.00	11.380	118.420	1647.42	51.33	-49.68	35.17	40°07'55.893°N	104°50'28.022°W	2.69	
1746.00	11.910	109.350	1739.49	59.79	-57.31	52.48	40°07'55.818°N	104°50'27.799°W	2.03	
1841.00	11.460	108.550	1832.52	66.91	-63.56	70.67	40°07'55.756°N	104°50'27.565°W	0.50	
1938.00	10.640	105.760	1927.73	73.26	-69.06	88.43	40°07'55.702°N	104°50'27.337°W	1.01	
2030.00	10.060	105.540	2018.23	78.49	-73.52	104.34	40°07'55.658°N	104°50'27.132°W	0.63	
2121.00	10.320	111.480	2107.80	84.34	-78.63	119.58	40°07'55.607°N	104°50'26.935°W	1.19	
2213.00	8.560	120.310	2198.55	91.46	-85.10	133.17	40°07'55.543°N	104°50'26.761°W	2.47	
2305.00	8.360	120.750	2289.55	98.89	-91.98	144.82	40°07'55.475°N	104°50'26.610°W	0.23	
2491.00	8.210	126.120	2473.61	114.70	-106.72	167.17	40°07'55.329°N	104°50'26.323°W	0.42	
2677.00	7.920	125.110	2657.77	130.91	-121.92	188.38	40°07'55.179°N	104°50'26.050°W	0.17	
2863.00	8.580	121.300	2841.85	146.56	-136.50	210.72	40°07'55.035°N	104°50'25.762°W	0.46	
3049.00	10.240	124.110	3025.34	164.26	-152.98	236.27	40°07'54.872°N	104°50'25.433°W	0.93	
3235.00	10.390	125.070	3208.33	184.47	-171.89	263.68	40°07'54.685°N	104°50'25.080°W	0.12	
3421.00	7.300	107.570	3392.13	198.88	-185.10	288.69	40°07'54.555°N	104°50'24.758°W	2.18	
3510.00	7.790	99.500	3480.36	202.13	-187.80	300.03	40°07'54.528°N	104°50'24.612°W	1.31	
3599.00	9.240	97.940	3568.38	204.74	-189.78	313.05	40°07'54.509°N	104°50'24.445°W	1.65	
3688.00	10.070	94.120	3656.12	207.00	-191.33	327.89	40°07'54.493°N	104°50'24.254°W	1.18	
3776.00	9.130	103.840	3742.89	209.93	-193.55	342.35	40°07'54.471°N	104°50'24.067°W	2.13	
3865.00	9.240	108.680	3830.75	214.56	-197.53	355.97	40°07'54.432°N	104°50'23.892°W	0.88	
3954.00	9.780	112.470	3918.53	220.40	-202.71	369.73	40°07'54.381°N	104°50'23.715°W	0.93	
4043.00	10.670	116.020	4006.12	227.59	-209.21	384.11	40°07'54.317°N	104°50'23.530°W	1.22	
4132.00	12.050	123.570	4093.37	237.07	-217.96	399.26	40°07'54.230°N	104°50'23.335°W	2.28	
4221.00	10.980	125.220	4180.58	247.79	-227.99	413.93	40°07'54.131°N	104°50'23.146°W	1.26	
4310.00	9.270	127.250	4268.19	257.62	-237.22	426.56	40°07'54.040°N	104°50'22.983°W	1.96	
4399.00	9.600	113.830	4356.00	265.56	-244.55	439.05	40°07'53.967°N	104°50'22.822°W	2.49	
4486.00	10.780	114.580	4441.63	272.55	-250.87	453.09	40°07'53.905°N	104°50'22.642°W	1.36	
4575.00	12.130	116.090	4528.85	280.89	-258.45	469.06	40°07'53.830°N	104°50'22.436°W	1.55	

## REFERENCE WELLPATH IDENTIFICATION

Operator	KERR-MCGEE OIL & GAS ONSHORE LP (LAMBERT STATE PLANE COORD)	Slot	SLOT#08 KERR 36C-25HZ (576'FSL & 2056'FWL, SEC.13)
Area	COLORADO	Well	KERR 36C-25HZ
Field	WELD COUNTY (KERR MCGEE)	Wellbore	KERR 36C-25HZ AWP <116-17923>
Facility	SEC.13-T2N-R67W		

## WELLPATH DATA (198 stations) † = interpolated/extrapolated station

MD [ft]	Inclination [°]	Azimuth [°]	TVD [ft]	Vert Sect [ft]	North [ft]	East [ft]	Latitude	Longitude	DLS [°/100ft]	Comments
4660.00	11.580	116.030	4612.04	289.31	-266.12	484.74	40°07'53.754"N	104°50'22.234"W	0.65	
4745.00	10.780	115.860	4695.42	297.23	-273.33	499.56	40°07'53.683"N	104°50'22.043"W	0.94	
4830.00	9.650	125.380	4779.08	305.44	-280.92	512.53	40°07'53.608"N	104°50'21.877"W	2.39	
4915.00	8.580	126.380	4863.01	313.85	-288.81	523.44	40°07'53.530"N	104°50'21.736"W	1.27	
5001.00	7.490	125.730	4948.16	321.39	-295.89	533.16	40°07'53.460"N	104°50'21.611"W	1.27	
5086.00	6.840	126.040	5032.50	328.01	-302.10	541.75	40°07'53.399"N	104°50'21.500"W	0.77	
5171.00	5.990	125.090	5116.96	333.91	-307.63	549.47	40°07'53.344"N	104°50'21.401"W	1.01	
5256.00	4.870	125.260	5201.58	338.85	-312.26	556.04	40°07'53.298"N	104°50'21.316"W	1.32	
5341.00	3.750	121.560	5286.34	342.65	-315.80	561.36	40°07'53.263"N	104°50'21.248"W	1.36	
5426.00	3.190	119.250	5371.18	345.47	-318.41	565.79	40°07'53.237"N	104°50'21.191"W	0.68	
5511.00	2.820	117.810	5456.07	347.79	-320.54	569.70	40°07'53.216"N	104°50'21.140"W	0.44	
5595.00	2.070	112.800	5539.99	349.49	-322.09	572.93	40°07'53.201"N	104°50'21.099"W	0.93	
5680.00	1.740	155.130	5624.95	351.35	-323.86	574.89	40°07'53.184"N	104°50'21.074"W	1.66	
5765.00	1.840	138.970	5709.91	353.62	-326.06	576.33	40°07'53.162"N	104°50'21.055"W	0.60	
5851.00	1.880	135.040	5795.86	355.75	-328.10	578.23	40°07'53.142"N	104°50'21.031"W	0.16	
5936.00	0.560	21.890	5880.85	356.40	-328.70	579.37	40°07'53.136"N	104°50'21.016"W	2.54	
6191.00	1.000	326.660	6135.83	353.36	-325.68	578.61	40°07'53.166"N	104°50'21.026"W	0.32	
6362.00	0.390	331.610	6306.81	351.55	-323.92	577.51	40°07'53.183"N	104°50'21.040"W	0.36	
6532.00	0.700	317.610	6476.80	350.22	-322.65	576.54	40°07'53.196"N	104°50'21.052"W	0.20	
6702.00	0.220	323.210	6646.80	349.15	-321.62	575.64	40°07'53.206"N	104°50'21.064"W	0.28	
6787.00	6.840	169.720	6731.60	354.04	-326.47	576.45	40°07'53.158"N	104°50'21.054"W	8.28	
6873.00	11.830	171.650	6816.44	367.90	-340.24	578.64	40°07'53.022"N	104°50'21.025"W	5.81	
6958.00	12.350	175.720	6899.55	385.66	-357.93	580.59	40°07'52.847"N	104°50'21.000"W	1.17	
7043.00	18.900	166.900	6981.38	408.32	-380.43	584.39	40°07'52.624"N	104°50'20.951"W	8.18	
7128.00	26.180	168.720	7059.83	440.45	-412.27	591.19	40°07'52.310"N	104°50'20.864"W	8.60	
7213.00	32.270	172.840	7133.99	481.67	-453.22	597.69	40°07'51.905"N	104°50'20.780"W	7.54	
7299.00	40.770	176.710	7203.05	532.74	-504.13	602.17	40°07'51.402"N	104°50'20.722"W	10.24	
7384.00	49.150	180.960	7263.15	592.69	-564.10	603.23	40°07'50.809"N	104°50'20.709"W	10.47	
7469.00	58.050	181.410	7313.54	660.87	-632.43	601.80	40°07'50.134"N	104°50'20.727"W	10.48	
7554.00	67.180	181.080	7352.60	736.08	-707.81	600.17	40°07'49.389"N	104°50'20.748"W	10.75	
7570.00†	68.388	181.312	7358.65	750.86	-722.62	599.86	40°07'49.243"N	104°50'20.752"W	7.67	7" CASING POINT
7639.00	73.600	182.270	7381.11	815.86	-787.80	597.82	40°07'48.599"N	104°50'20.779"W	7.67	
7724.00	79.280	183.100	7401.03	898.08	-870.31	593.94	40°07'47.783"N	104°50'20.829"W	6.75	
7790.00	80.380	183.050	7412.69	962.71	-935.17	590.45	40°07'47.142"N	104°50'20.873"W	1.67	
7849.00†	83.132	181.693	7421.15	1020.85	-993.51	588.04	40°07'46.566"N	104°50'20.905"W	5.19	8 3/4" LANDING POINT
7901.00	85.560	180.510	7426.27	1072.48	-1045.24	587.05	40°07'46.055"N	104°50'20.917"W	5.19	
7986.00	86.850	181.360	7431.89	1157.11	-1130.04	585.66	40°07'45.217"N	104°50'20.935"W	1.82	
8071.00	89.160	181.660	7434.85	1241.82	-1214.95	583.42	40°07'44.378"N	104°50'20.964"W	2.74	
8157.00	90.920	182.150	7434.79	1327.52	-1300.90	580.57	40°07'43.528"N	104°50'21.001"W	2.12	
8243.00	91.040	181.610	7433.32	1413.23	-1386.84	577.75	40°07'42.679"N	104°50'21.037"W	0.64	
8328.00	88.700	180.890	7433.52	1498.01	-1471.82	575.89	40°07'41.839"N	104°50'21.061"W	2.88	
8413.00	89.260	181.260	7435.03	1582.80	-1556.79	574.30	40°07'41.000"N	104°50'21.082"W	0.79	
8498.00	88.950	180.740	7436.36	1667.61	-1641.76	572.81	40°07'40.160"N	104°50'21.101"W	0.71	
8583.00	89.530	181.240	7437.48	1752.42	-1726.74	571.34	40°07'39.320"N	104°50'21.120"W	0.90	
8670.00	89.380	181.460	7438.31	1839.19	-1813.71	569.30	40°07'38.461"N	104°50'21.146"W	0.31	

REFERENCE WELLPATH IDENTIFICATION			
Operator	KERR-MCGEE OIL & GAS ONSHORE LP (LAMBERT STATE PLANE COORD)	Slot	SLOT#08 KERR 36C-25HZ (576'FSL & 2056'FWL, SEC.13)
Area	COLORADO	Well	KERR 36C-25HZ
Field	WELD COUNTY (KERR MCGEE)	Wellbore	KERR 36C-25HZ AWB <116-17923>
Facility	SEC.13-T2N-R67W		

WELLPATH DATA (198 stations)										
MD [ft]	Inclination [°]	Azimuth [°]	TVD [ft]	Vert Sect [ft]	North [ft]	East [ft]	Latitude	Longitude	DLS [°/100ft]	Comments
8755.00	88.550	181.320	7439.85	1923.95	-1898.67	567.23	40°07'37.621"N	104°50'21.173"W	0.99	
8840.00	89.010	181.550	7441.66	2008.70	-1983.63	565.11	40°07'36.782"N	104°50'21.200"W	0.61	
8925.00	91.070	181.190	7441.60	2093.47	-2068.60	563.07	40°07'35.942"N	104°50'21.226"W	2.46	
9010.00	91.010	181.270	7440.05	2178.25	-2153.57	561.25	40°07'35.102"N	104°50'21.250"W	0.12	
9095.00	91.530	181.330	7438.17	2263.01	-2238.52	559.32	40°07'34.263"N	104°50'21.275"W	0.62	
9180.00	90.760	180.220	7436.47	2347.83	-2323.50	558.17	40°07'33.423"N	104°50'21.289"W	1.59	
9265.00	89.100	179.820	7436.58	2432.73	-2408.49	558.14	40°07'32.583"N	104°50'21.290"W	2.01	
9350.00	88.140	179.070	7438.62	2517.63	-2493.46	558.96	40°07'31.743"N	104°50'21.279"W	1.43	
9435.00	88.520	179.120	7441.10	2602.55	-2578.42	560.31	40°07'30.904"N	104°50'21.262"W	0.45	
9520.00	88.420	178.920	7443.37	2687.48	-2663.37	561.76	40°07'30.064"N	104°50'21.243"W	0.26	
9606.00	89.160	178.950	7445.19	2773.42	-2749.34	563.36	40°07'29.215"N	104°50'21.223"W	0.86	
9691.00	89.010	178.590	7446.54	2858.38	-2834.31	565.18	40°07'28.375"N	104°50'21.199"W	0.46	
9776.00	89.130	178.540	7447.92	2943.35	-2919.27	567.31	40°07'27.535"N	104°50'21.172"W	0.15	
9861.00	89.630	178.610	7448.84	3028.32	-3004.24	569.42	40°07'26.696"N	104°50'21.145"W	0.59	
9946.00	89.100	178.120	7449.78	3113.29	-3089.20	571.85	40°07'25.856"N	104°50'21.114"W	0.85	
10031.00	88.610	177.700	7451.48	3198.27	-3174.12	574.95	40°07'25.017"N	104°50'21.074"W	0.76	
10116.00	89.260	178.340	7453.06	3283.25	-3259.06	577.89	40°07'24.178"N	104°50'21.036"W	1.07	
10201.00	89.780	178.760	7453.77	3368.22	-3344.03	580.04	40°07'23.338"N	104°50'21.008"W	0.79	
10286.00	90.060	179.800	7453.89	3453.16	-3429.02	581.10	40°07'22.498"N	104°50'20.995"W	1.27	
10371.00	89.290	179.530	7454.38	3538.08	-3514.02	581.60	40°07'21.658"N	104°50'20.988"W	0.96	
10457.00	87.470	178.810	7456.81	3624.00	-3599.97	582.85	40°07'20.809"N	104°50'20.972"W	2.28	
10550.00	88.330	178.930	7460.21	3716.89	-3692.89	584.68	40°07'19.890"N	104°50'20.949"W	0.93	
10643.00	88.420	179.900	7462.85	3809.79	-3785.84	585.63	40°07'18.972"N	104°50'20.936"W	1.05	
10736.00	88.920	179.840	7465.01	3902.66	-3878.82	585.84	40°07'18.053"N	104°50'20.934"W	0.54	
10829.00	88.610	179.080	7467.01	3995.57	-3971.79	586.72	40°07'17.134"N	104°50'20.923"W	0.88	
10921.00	89.410	179.180	7468.60	4087.50	-4063.77	588.11	40°07'16.225"N	104°50'20.905"W	0.88	
11014.00	89.230	178.160	7469.71	4180.47	-4156.73	590.27	40°07'15.307"N	104°50'20.877"W	1.11	
11107.00	90.180	179.820	7470.19	4273.42	-4249.71	591.91	40°07'14.388"N	104°50'20.856"W	2.06	
11200.00	90.400	181.030	7469.72	4366.27	-4342.71	591.22	40°07'13.469"N	104°50'20.865"W	1.32	
11293.00	89.320	181.420	7469.94	4459.04	-4435.68	589.23	40°07'12.550"N	104°50'20.890"W	1.23	
11386.00	89.010	180.790	7471.30	4551.82	-4528.66	587.44	40°07'11.631"N	104°50'20.913"W	0.75	
11479.00	88.920	180.570	7472.98	4644.63	-4621.64	586.33	40°07'10.712"N	104°50'20.928"W	0.26	
11573.00	89.160	180.290	7474.55	4738.47	-4715.62	585.63	40°07'09.784"N	104°50'20.937"W	0.39	
11666.00	89.260	180.270	7475.84	4831.33	-4808.61	585.17	40°07'08.865"N	104°50'20.943"W	0.11	
11756.00	89.870	179.830	7476.52	4921.22	-4898.61	585.10	40°07'07.975"N	104°50'20.944"W	0.84	
11841.00	89.620	179.340	7476.90	5006.14	-4983.60	585.71	40°07'07.135"N	104°50'20.936"W	0.65	
11926.00	89.930	179.960	7477.23	5091.06	-5068.60	586.23	40°07'06.295"N	104°50'20.929"W	0.82	
12011.00	89.840	179.600	7477.40	5175.98	-5153.60	586.56	40°07'05.456"N	104°50'20.925"W	0.44	
12096.00	90.000	180.350	7477.52	5260.88	-5238.60	586.59	40°07'04.616"N	104°50'20.924"W	0.90	
12181.00	89.410	181.140	7477.96	5345.72	-5323.59	585.49	40°07'03.776"N	104°50'20.939"W	1.16	
12266.00	89.100	181.020	7479.06	5430.52	-5408.57	583.89	40°07'02.936"N	104°50'20.959"W	0.39	
12352.00	89.130	180.420	7480.39	5516.35	-5494.55	582.81	40°07'02.086"N	104°50'20.973"W	0.70	
12436.00	89.230	180.190	7481.59	5600.22	-5578.54	582.36	40°07'01.256"N	104°50'20.979"W	0.30	
12522.00	89.660	179.770	7482.43	5686.11	-5664.53	582.39	40°07'00.406"N	104°50'20.979"W	0.70	
12607.00	89.690	179.480	7482.91	5771.04	-5749.53	582.95	40°06'59.566"N	104°50'20.972"W	0.34	

REFERENCE WELLPATH IDENTIFICATION			
Operator	KERR-MCGEE OIL & GAS ONSHORE LP (LAMBERT STATE PLANE COORD)	Slot	SLOT#08 KERR 36C-25HZ (576'FSL & 2056'FWL, SEC.13)
Area	COLORADO	Well	KERR 36C-25HZ
Field	WELD COUNTY (KERR MCGEE)	Wellbore	KERR 36C-25HZ AWB <116-17923>
Facility	SEC.13-T2N-R67W		

WELLPATH DATA (198 stations)										
MD [ft]	Inclination [°]	Azimuth [°]	TVD [ft]	Vert Sect [ft]	North [ft]	East [ft]	Latitude	Longitude	DLS [°/100ft]	Comments
12692.00	90.360	179.270	7482.87	5855.97	-5834.53	583.87	40°06'58.727"N	104°50'20.960"W	0.83	
12777.00	90.520	179.010	7482.22	5940.92	-5919.51	585.15	40°06'57.887"N	104°50'20.943"W	0.36	
12862.00	89.440	179.100	7482.25	6025.88	-6004.50	586.55	40°06'57.047"N	104°50'20.925"W	1.27	
12947.00	88.120	179.400	7484.06	6110.81	-6089.47	587.66	40°06'56.207"N	104°50'20.911"W	1.59	
13032.00	88.450	178.840	7486.60	6195.72	-6174.42	588.97	40°06'55.368"N	104°50'20.894"W	0.76	
13117.00	90.120	179.670	7487.66	6280.66	-6259.41	590.07	40°06'54.528"N	104°50'20.880"W	2.19	
13203.00	91.100	179.680	7486.75	6366.57	-6345.40	590.56	40°06'53.678"N	104°50'20.874"W	1.14	
13290.00	90.460	180.810	7485.56	6453.44	-6432.39	590.19	40°06'52.818"N	104°50'20.879"W	1.49	
13374.00	89.290	181.760	7485.75	6537.23	-6516.36	588.31	40°06'51.989"N	104°50'20.903"W	1.79	
13460.00	88.360	180.450	7487.51	6623.01	-6602.33	586.65	40°06'51.139"N	104°50'20.924"W	1.87	
13547.00	89.720	181.160	7488.97	6709.82	-6689.30	585.42	40°06'50.280"N	104°50'20.940"W	1.76	
13632.00	90.700	181.650	7488.66	6794.59	-6774.28	583.34	40°06'49.440"N	104°50'20.967"W	1.29	
13717.00	91.230	181.110	7487.22	6879.36	-6859.24	581.29	40°06'48.600"N	104°50'20.993"W	0.89	
13802.00	90.860	181.770	7485.67	6964.11	-6944.20	579.16	40°06'47.761"N	104°50'21.021"W	0.89	
13887.00	86.980	181.270	7487.28	7048.84	-7029.14	576.90	40°06'46.921"N	104°50'21.050"W	4.60	
13972.00	88.020	180.740	7490.98	7133.57	-7114.04	575.41	40°06'46.082"N	104°50'21.069"W	1.37	
14057.00	88.610	180.630	7493.48	7218.38	-7199.00	574.40	40°06'45.243"N	104°50'21.082"W	0.71	
14142.00	90.980	180.580	7493.79	7303.23	-7283.99	573.50	40°06'44.403"N	104°50'21.094"W	2.79	
14227.00	91.570	180.760	7491.90	7388.05	-7368.96	572.51	40°06'43.563"N	104°50'21.106"W	0.73	
14314.00	90.670	180.760	7490.20	7474.87	-7455.93	571.35	40°06'42.704"N	104°50'21.121"W	1.03	
14399.00	91.440	180.400	7488.63	7559.71	-7540.91	570.49	40°06'41.864"N	104°50'21.132"W	1.00	
14484.00	90.180	180.390	7487.43	7644.57	-7625.90	569.91	40°06'41.024"N	104°50'21.140"W	1.48	
14569.00	89.220	179.730	7487.87	7729.46	-7710.90	569.82	40°06'40.184"N	104°50'21.141"W	1.37	
14655.00	89.380	179.080	7488.92	7815.39	-7796.89	570.71	40°06'39.334"N	104°50'21.130"W	0.78	
14741.00	90.830	179.130	7488.77	7901.34	-7882.87	572.06	40°06'38.484"N	104°50'21.112"W	1.69	
14826.00	90.060	179.430	7488.11	7986.28	-7967.86	573.12	40°06'37.645"N	104°50'21.099"W	0.97	
14911.00	89.260	178.810	7488.61	8071.23	-8052.85	574.43	40°06'36.805"N	104°50'21.082"W	1.19	
14996.00	89.380	178.260	7489.62	8156.20	-8137.82	576.60	40°06'35.965"N	104°50'21.054"W	0.66	
15081.00	89.750	178.030	7490.27	8241.19	-8222.77	579.35	40°06'35.126"N	104°50'21.019"W	0.51	
15166.00	90.550	179.190	7490.04	8326.16	-8307.74	581.41	40°06'34.286"N	104°50'20.992"W	1.66	
15251.00	90.150	180.800	7489.52	8411.06	-8392.74	581.42	40°06'33.446"N	104°50'20.992"W	1.95	
15335.00	89.750	181.060	7489.60	8494.88	-8476.73	580.06	40°06'32.616"N	104°50'21.010"W	0.57	
15420.00	89.960	180.940	7489.81	8579.70	-8561.71	578.58	40°06'31.776"N	104°50'21.029"W	0.28	
15505.00	90.400	180.580	7489.54	8664.54	-8646.71	577.45	40°06'30.936"N	104°50'21.043"W	0.67	
15591.00	88.980	180.600	7490.01	8750.38	-8732.70	576.56	40°06'30.086"N	104°50'21.055"W	1.65	
15676.00	89.160	180.360	7491.39	8835.23	-8817.68	575.85	40°06'29.247"N	104°50'21.064"W	0.35	
15761.00	90.360	180.010	7491.75	8920.12	-8902.68	575.58	40°06'28.407"N	104°50'21.067"W	1.47	
15846.00	91.500	180.110	7490.37	9005.00	-8987.67	575.49	40°06'27.567"N	104°50'21.069"W	1.35	
15931.00	89.810	180.200	7489.39	9089.88	-9072.66	575.26	40°06'26.727"N	104°50'21.072"W	1.99	
16016.00	88.950	179.430	7490.31	9174.79	-9157.65	575.53	40°06'25.887"N	104°50'21.068"W	1.36	
16100.00	89.010	178.990	7491.81	9258.72	-9241.63	576.69	40°06'25.057"N	104°50'21.053"W	0.53	
16186.00	89.930	178.650	7492.61	9344.69	-9327.61	578.46	40°06'24.207"N	104°50'21.030"W	1.14	
16271.00	90.120	179.890	7492.57	9429.63	-9412.60	579.54	40°06'23.368"N	104°50'21.016"W	1.48	
16355.00	89.720	181.020	7492.69	9513.49	-9496.59	578.88	40°06'22.538"N	104°50'21.025"W	1.43	
16440.00	89.560	182.260	7493.22	9598.24	-9581.56	576.44	40°06'21.698"N	104°50'21.056"W	1.47	

REFERENCE WELLPATH IDENTIFICATION			
Operator	KERR-MCGEE OIL & GAS ONSHORE LP (LAMBERT STATE PLANE COORD)	Slot	SLOT#08 KERR 36C-25HZ (576'FSL & 2056'FWL, SEC.13)
Area	COLORADO	Well	KERR 36C-25HZ
Field	WELD COUNTY (KERR MCGEE)	Wellbore	KERR 36C-25HZ AWB <116-17923>
Facility	SEC.13-T2N-R67W		

WELLPATH DATA (198 stations)										
MD [ft]	Inclination [°]	Azimuth [°]	TVD [ft]	Vert Sect [ft]	North [ft]	East [ft]	Latitude	Longitude	DLS [°/100ft]	Comments
16525.00	89.190	183.020	7494.15	9682.85	-9666.46	572.53	40°06'20.859"N	104°50'21.107"W	0.99	
16610.00	90.000	183.010	7494.75	9767.41	-9751.34	568.06	40°06'20.020"N	104°50'21.164"W	0.95	
16695.00	89.530	182.820	7495.10	9851.99	-9836.23	563.74	40°06'19.181"N	104°50'21.220"W	0.60	
16780.00	90.090	182.500	7495.38	9936.61	-9921.14	559.79	40°06'18.342"N	104°50'21.271"W	0.76	
16865.00	89.630	183.330	7495.59	10021.19	-10006.03	555.47	40°06'17.503"N	104°50'21.326"W	1.12	
16950.00	89.930	182.780	7495.91	10105.75	-10090.90	550.94	40°06'16.664"N	104°50'21.385"W	0.74	
17036.00	89.380	182.390	7496.43	10191.37	-10176.81	547.06	40°06'15.816"N	104°50'21.435"W	0.78	
17121.00	90.000	181.680	7496.89	10276.07	-10261.76	544.04	40°06'14.976"N	104°50'21.474"W	1.11	
17206.00	90.460	181.300	7496.55	10360.83	-10346.73	541.83	40°06'14.136"N	104°50'21.502"W	0.70	
17291.00	91.440	180.810	7495.14	10445.63	-10431.70	540.27	40°06'13.297"N	104°50'21.522"W	1.29	
17376.00	90.520	180.870	7493.69	10530.44	-10516.68	539.02	40°06'12.457"N	104°50'21.538"W	1.08	
17460.00	88.890	181.170	7494.12	10614.26	-10600.66	537.53	40°06'11.627"N	104°50'21.558"W	1.97	
17546.00	89.070	180.450	7495.65	10700.07	-10686.64	536.31	40°06'10.777"N	104°50'21.573"W	0.86	
17630.00	89.930	180.520	7496.38	10783.93	-10770.63	535.60	40°06'09.947"N	104°50'21.582"W	1.03	
17716.00	88.980	180.040	7497.20	10869.81	-10856.63	535.18	40°06'09.098"N	104°50'21.588"W	1.24	
17801.00	89.810	179.440	7498.10	10954.72	-10941.62	535.56	40°06'08.258"N	104°50'21.583"W	1.20	
17868.00	89.930	179.200	7498.25	11021.67	-11008.61	536.36	40°06'07.596"N	104°50'21.573"W	0.40	LAST BHI MWD+IFR SURVEY
17923.00	89.930	179.200	7498.32	11076.64	-11063.61	537.13	40°06'07.052"N	104°50'21.563"W	0.00	PROJECTION TO BIT

HOLE & CASING SECTIONS - Ref Wellbore: KERR 36C-25HZ AWB <116-17923> Ref Wellpath: KERR 36C-25HZ AWP									
String/Diameter	Start MD [ft]	End MD [ft]	Interval [ft]	Start TVD [ft]	End TVD [ft]	Start N/S [ft]	Start E/W [ft]	End N/S [ft]	End E/W [ft]
13.5in Open Hole	16.00	1064.00	1048.00	16.00	1063.98	0.00	0.00	-2.80	-4.90
9.625in Casing Surface	16.00	1064.00	1048.00	16.00	1063.98	0.00	0.00	-2.80	-4.90
8.75in Open Hole	1064.00	7849.00	6785.00	1063.98	7421.15	-2.80	-4.90	-993.51	588.04
7in Casing Intermediate	16.00	7570.00	7554.00	16.00	7358.65	0.00	0.00	-722.62	599.86
6.125in Open Hole	7849.00	17923.00	10074.00	7421.15	7498.32	-993.51	588.04	-11063.61	537.13

WELLPATH COMPOSITION - Ref Wellbore: KERR 36C-25HZ AWB <116-17923> Ref Wellpath: KERR 36C-25HZ AWP				
Start MD [ft]	End MD [ft]	Positional Uncertainty Model	Log Name/Comment	Wellbore
16.00	1006.00	Generic gyro - northseeking (Standard)	VES GYRO SURVEYS <116-1006>	KERR 36C-25HZ AWB <116-17923>
1006.00	7790.00	NaviTrak (MAGCORR,IFR)	BHI NAVITRAK MWD+IFR 8 3/4" <1088-7790>	KERR 36C-25HZ AWB <116-17923>
7790.00	17868.00	NaviTrak (MAGCORR,IFR)	BHI NAVITRAK MWD+IFR 6 1/8" <7901-17868>	KERR 36C-25HZ AWB <116-17923>
17868.00	17923.00	Blind Drilling (std)	Projection to bit	KERR 36C-25HZ AWB <116-17923>

REFERENCE WELLPATH IDENTIFICATION			
Operator	KERR-MCGEE OIL & GAS ONSHORE LP (LAMBERT STATE PLANE COORD)	Slot	SLOT#08 KERR 36C-25HZ (576'FSL & 2056'FWL, SEC.13)
Area	COLORADO	Well	KERR 36C-25HZ
Field	WELD COUNTY (KERR MCGEE)	Wellbore	KERR 36C-25HZ AWB <116-17923>
Facility	SEC.13-T2N-R67W		

WELLPATH COMMENTS					
MD [ft]	Inclination [°]	Azimuth [°]	TVD [ft]	Comment	
16.00	0.000	239.890	16.00	TIE ON	
116.00	0.551	239.890	116.00	BEGIN GGYRO SURVEYS	
1006.00	0.083	189.950	1005.98	TIE ONTO GYRO SURVEYS	
1088.00	0.540	292.280	1087.98	BEGIN BHI MWD+IFR SURVEYS	
7570.00	68.388	181.312	7358.65	7" CASING POINT	
7849.00	83.132	181.693	7421.15	8 3/4" LANDING POINT	
17868.00	89.930	179.200	7498.25	LAST BHI MWD+IFR SURVEY	
17923.00	89.930	179.200	7498.32	PROJECTION TO BIT	