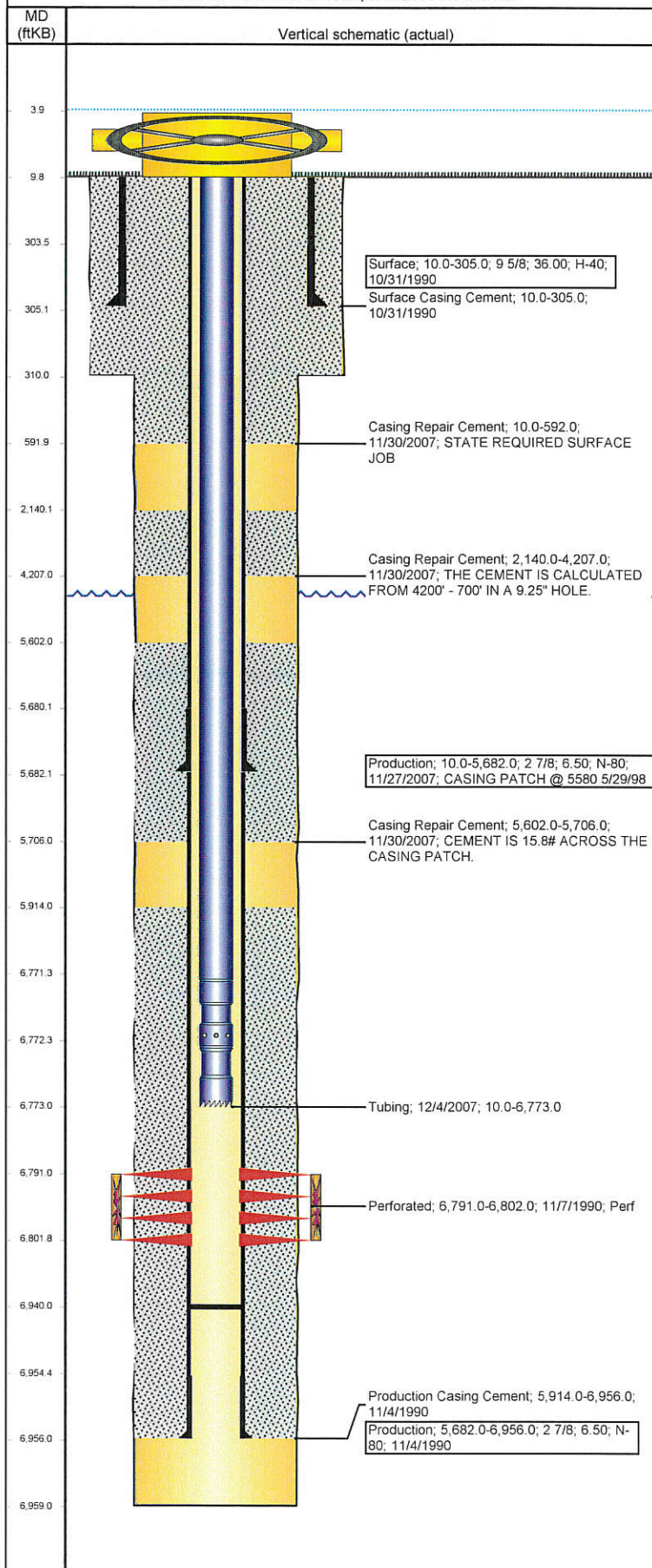


Well Name: STATE A36-11

VERTICAL - ORIGINAL HOLE, 3/16/2015 9:54:49 AM



## Well Header

API	Business Unit	District	Well Config
05-123-14789	DJ BASIN	15	VERTICAL
Original KB Elevation (ft)	KB - GL / MSL (ftKB)	Spud Date	P & A Date
4,618.00	10.00	10/30/1990	

## Comment

CASING PATCH @ 5580 5/29/98 & 12/4/07

## Directions To Well

CR 59 & CR 62, N 0.5, W 0.5 TO TANK BATT, S 0.2 INTO

## Current PBDT (ftKB)

ORIGINAL HOLE - 6,940.0

## Surface Location (Congressional)

Quarter 1	Quarter 2	Quarter 3	Quarter 4	Section	Township	Twnshp N...	Range	Rng E/W Dir
		NE	SW	36	6	N	64	W

## Bottom Hole Location

North-South Distance (ft)	From N or S Line	East-West Distance (ft)	From E or W Line

## Plug Back Total Depths

Date	Depth (ftKB)	Method	Com
11/4/1990	6,940.0	TAG	

## Wellbore Sections

Section Des	Size (in)	Act Top, MD (ftKB)	Act Btm, MD (ftKB)
Surface	12 1/4	10.0	310.0
Production	7 7/8	310.0	6,959.0

## Zone Statuses

Zone Name	Status Date	Status	Fluid Type	Job
CODELL	11/21/1990	PR	Oil	DRILLING/COMPLETION - ORIGINAL, 10/30/1990 00:00

## Casing Strings

Csg Des	Run Date	OD (in)	Wt/Len (lb/ft)	Grade	Top, MD (ftKB)	MD (ftKB)
Surface	10/31/1990	9 5/8	36.00	H-40	10.0	305.0
Production	11/27/2007	2 7/8	6.50	N-80	10.0	5,682.0
Production	11/4/1990	2 7/8	6.50	N-80	10.0	6,956.0

## Cement

Des	Top (ftKB)	Btm (ftKB)
Surface Casing Cement	10.0	305.0
Production Casing Cement	5,914.0	6,956.0
Casing Repair Cement	5,602.0	5,706.0
Casing Repair Cement	2,140.0	4,207.0
Casing Repair Cement	10.0	592.0

## Tubing Components

Item Des	OD (in)	Wt (lb/ft)	Grade	Jts	Len (ft)
Tubing	1.66	2.30	J-55	205	6,761.40
Pump Seating Nipple	1.66			1	1.00
Notched collar	1.66			1	0.60

## Perforation Data

Zone	Bnch/St g	Entered Shot Total	Top (ftKB)	Btm (ftKB)	Date
CODELL, ORIGINAL HOLE		24	6,791.00	6,802.00	11/7/1990

## Stimulations & Treatments

Bnch/Stg	Date	Zone	Primary Job Type
	11/15/1990	CODELL, ORIGINAL HOLE	DRILLING/COMPLETION - ORIGINAL

## Comment

Total Add Amount	Total Clean Volume...	Vol Slurry Tot (gal)	Vol Gas Tot (MCF)
Proppant 200000 lb		71988.00	
Avg Treat Pressure (psi)	Max Treat Pressure (psi)	Avg Treat Rate (bbl/min)	Max Treat Rate (bbl/min)

## Other In Hole

Run Date	Des	OD (in)	Top (ftKB)	Btm (ftKB)

## Logs

Date	Type	Top, MD (ftKB)	Btm, MD (ftKB)
11/4/1990	COMPENSATED DENSITY	3,400.0	6,954.0
11/4/1990	INDUCTION	305.0	6,954.0
11/7/1990	CEMENT BOND	5,800.0	6,873.0
12/3/2007	CBL/CCL/GR	10.0	6,141.0
4/17/2014	GYRO	10.0	6,700.0