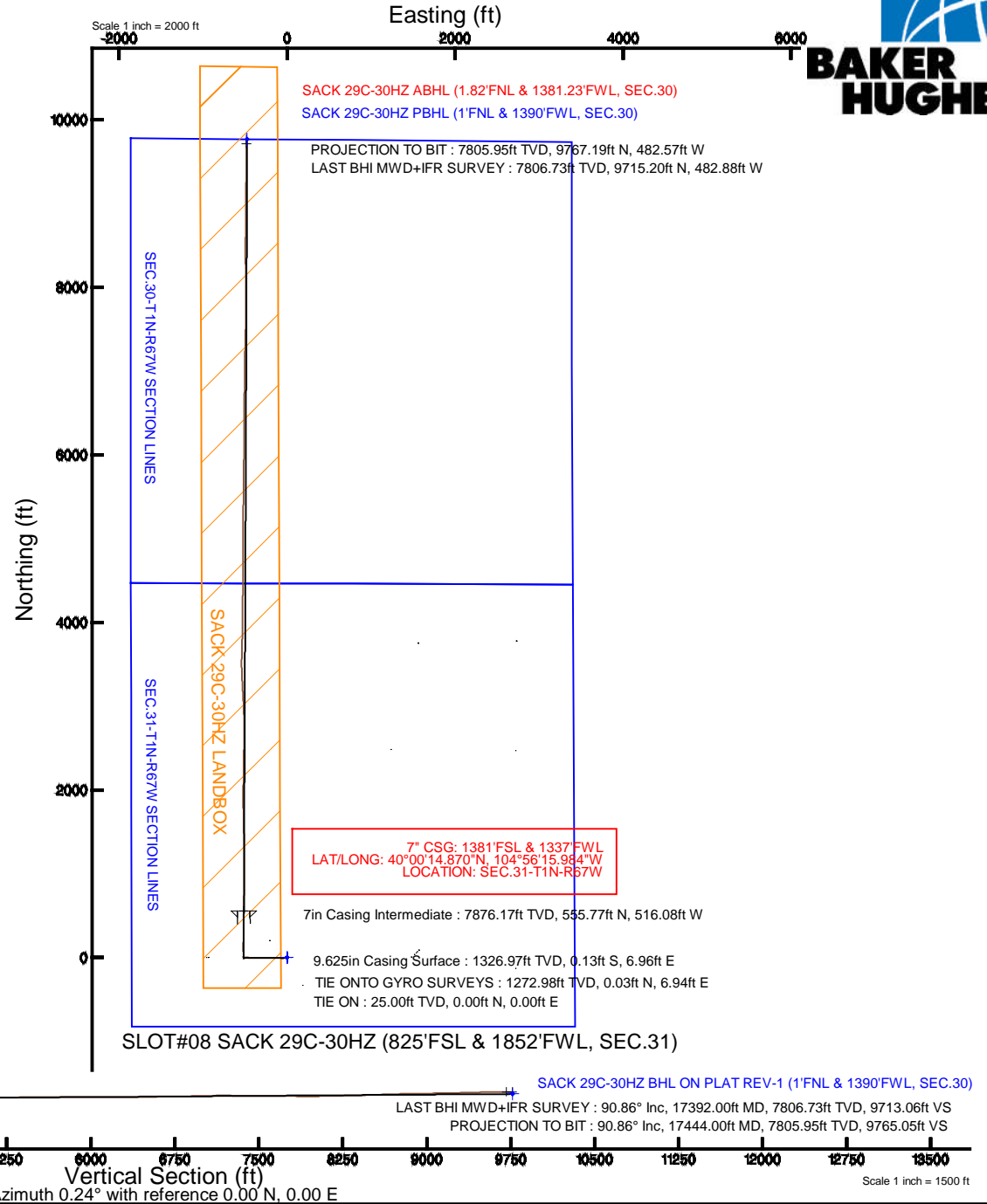
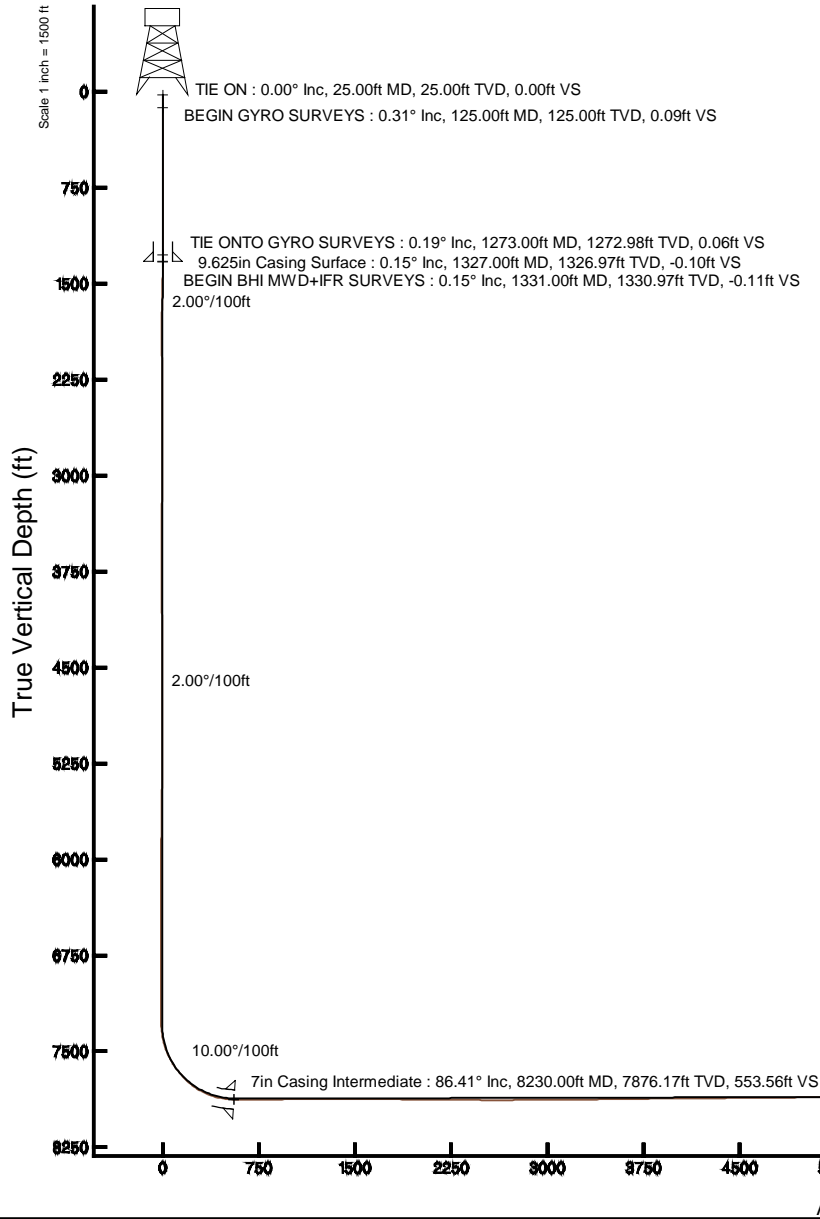


# KERR-MCGEE OIL & GAS ONSHORE LP (LAMBERT STATE PLANE COORD)

Location: COLORADO Slot: SLOT#08 SACK 29C-30HZ (825'FSL & 1852'FWL, SEC.31)  
 Field: WELD COUNTY (KERR MCGEE) Well: SACK 29C-30HZ  
 Facility: SEC.31-T1N-R67W Wellbore: SACK 29C-30HZ PWB

Plot reference wellpath is SACK 29C-30HZ (REV-B.0) PWP

True vertical depths are referenced to PRECISION 595 (25'KB) (RKB)	Grid System: NAD83 / Lambert Colorado SP, Northern Zone (501), US feet
Measured depths are referenced to PRECISION 595 (25'KB) (RKB)	North Reference: True north
PRECISION 595 (25'KB) (RKB) to Mean Sea Level: 5080 feet	Scale: True distance
Mean Sea Level to Mud line (At Slot: SLOT#08 SACK 29C-30HZ (825'FSL & 1852'FWL, SEC.31)): 0 feet	Depths are in feet
Coordinates are in feet referenced to Slot	Created by: robiale01 on 1/21/2015



Vertical Section (ft)  
Azimuth 0.24° with reference 0.00 N, 0.00 E

Scale 1 inch = 1500 ft

REFERENCE WELLPATH IDENTIFICATION			
Operator	KERR-MCGEE OIL & GAS ONSHORE LP (LAMBERT STATE PLANE COORD)	Slot	SLOT#08 SACK 29C-30HZ (825'FSL & 1852'FWL, SEC.31)
Area	COLORADO	Well	SACK 29C-30HZ
Field	WELD COUNTY (KERR MCGEE)	Wellbore	SACK 29C-30HZ AWB <125-17444>
Facility	SEC.31-T1N-R67W		

REPORT SETUP INFORMATION			
Projection System	NAD83 / Lambert Colorado SP, Northern Zone (501), US feet	Software System	WellArchitect@ 4.0.0
North Reference	True	User	Robiale01
Scale	0.999966	Report Generated	1/12/2015 at 8:12:26 AM
Convergence at slot	n/a	Database/Source file	WellArchitectDB/SACK_29C-30HZ_AWB_125-17444_.xml

WELLPATH LOCATION						
	Local coordinates		Grid coordinates		Geographic coordinates	
	North[ft]	East[ft]	Easting[US ft]	Northing[US ft]	Latitude	Longitude
Slot Location	-0.39	956.96	3158018.82	1244298.35	40°00'09.378"N	104°56'09.352"W
Facility Reference Pt			3157061.92	1244292.69	40°00'09.382"N	104°56'21.649"W
Field Reference Pt			3197771.84	1268891.29	40°04'09.600"N	104°47'36.000"W

WELLPATH DATUM			
Calculation method	Minimum curvature	PRECISION 595 (25'KB) (RKB) to Facility Vertical Datum	5080.00ft
Horizontal Reference Pt	Slot	PRECISION 595 (25'KB) (RKB) to Mean Sea Level	5080.00ft
Vertical Reference Pt	PRECISION 595 (25'KB) (RKB)	PRECISION 595 (25'KB) (RKB) to Mud Line at Slot (SLOT#08 SACK 29C-30HZ (825'FSL & 1852'FWL, SEC.31))	5080.00ft
MD Reference Pt	PRECISION 595 (25'KB) (RKB)	Section Origin	N 0.00, E 0.00 ft
Field Vertical Reference	Mean Sea Level	Section Azimuth	357.17°

### REFERENCE WELLPATH IDENTIFICATION

Operator	KERR-MCGEE OIL & GAS ONSHORE LP (LAMBERT STATE PLANE COORD)	Slot	SLOT#08 SACK 29C-30HZ (825'FSL & 1852'FWL, SEC.31)
Area	COLORADO	Well	SACK 29C-30HZ
Field	WELD COUNTY (KERR MCGEE)	Wellbore	SACK 29C-30HZ AWB <125-17444>
Facility	SEC.31-T1N-R67W		

### WELLPATH DATA (160 stations) † = interpolated/extrapolated station

MD [ft]	Inclination [°]	Azimuth [°]	TVD [ft]	Vert Sect [ft]	North [ft]	East [ft]	Latitude	Longitude	DLS [°/100ft]	Comments
0.00†	0.000	70.740	0.00	0.00	0.00	0.00	40°00'09.378"N	104°56'09.352"W	0.00	
25.00	0.000	70.740	25.00	0.00	0.00	0.00	40°00'09.378"N	104°56'09.352"W	0.00	TIE ON
125.00	0.310	70.740	125.00	0.08	0.09	0.26	40°00'09.379"N	104°56'09.349"W	0.31	BEGIN GYRO SURVEYS
225.00	0.330	95.310	225.00	0.11	0.15	0.80	40°00'09.380"N	104°56'09.342"W	0.14	
325.00	0.460	115.050	325.00	-0.12	-0.04	1.45	40°00'09.378"N	104°56'09.333"W	0.19	
425.00	0.540	111.800	424.99	-0.50	-0.39	2.25	40°00'09.374"N	104°56'09.323"W	0.08	
525.00	0.560	89.010	524.99	-0.71	-0.56	3.18	40°00'09.373"N	104°56'09.311"W	0.22	
625.00	0.510	89.420	624.98	-0.75	-0.54	4.11	40°00'09.373"N	104°56'09.299"W	0.05	
725.00	0.320	71.510	724.98	-0.69	-0.45	4.82	40°00'09.374"N	104°56'09.290"W	0.23	
825.00	0.260	62.030	824.98	-0.52	-0.26	5.28	40°00'09.375"N	104°56'09.284"W	0.08	
925.00	0.150	66.050	924.98	-0.37	-0.10	5.60	40°00'09.377"N	104°56'09.280"W	0.11	
1025.00	0.310	101.350	1024.98	-0.39	-0.10	5.99	40°00'09.377"N	104°56'09.275"W	0.21	
1125.00	0.360	70.150	1124.98	-0.37	-0.04	6.55	40°00'09.378"N	104°56'09.268"W	0.19	
1225.00	0.070	60.580	1224.98	-0.25	0.09	6.90	40°00'09.379"N	104°56'09.263"W	0.29	
1273.00	0.190	166.080	1272.98	-0.31	0.03	6.94	40°00'09.378"N	104°56'09.263"W	0.46	TIE ONTO GYRO SURVEYS
1331.00	0.150	185.640	1330.97	-0.48	-0.14	6.96	40°00'09.377"N	104°56'09.263"W	0.12	BEGIN BHI MWD+IFR SURVEYS
1380.00	1.050	254.210	1379.97	-0.64	-0.32	6.52	40°00'09.375"N	104°56'09.268"W	2.05	
1474.00	4.020	258.520	1473.87	-1.33	-1.21	2.46	40°00'09.366"N	104°56'09.320"W	3.16	
1569.00	6.080	260.500	1568.50	-2.42	-2.71	-5.76	40°00'09.351"N	104°56'09.426"W	2.18	
1664.00	8.200	260.760	1662.75	-3.76	-4.63	-17.42	40°00'09.332"N	104°56'09.576"W	2.23	
1759.00	9.140	263.060	1756.67	-5.06	-6.63	-31.59	40°00'09.313"N	104°56'09.758"W	1.05	
1853.00	9.590	266.960	1849.42	-5.62	-7.94	-46.82	40°00'09.300"N	104°56'09.954"W	0.83	
1948.00	9.700	276.490	1943.08	-4.36	-7.46	-62.68	40°00'09.304"N	104°56'10.157"W	1.68	
2043.00	9.220	274.610	2036.79	-2.07	-5.94	-78.22	40°00'09.319"N	104°56'10.357"W	0.60	
2137.00	10.100	273.340	2129.45	-0.21	-4.86	-93.95	40°00'09.330"N	104°56'10.559"W	0.96	
2232.00	9.920	271.420	2223.01	1.29	-4.17	-110.45	40°00'09.337"N	104°56'10.771"W	0.40	
2327.00	9.230	270.230	2316.68	2.30	-3.93	-126.25	40°00'09.339"N	104°56'10.974"W	0.76	
2421.00	9.880	268.230	2409.38	2.85	-4.15	-141.85	40°00'09.337"N	104°56'11.175"W	0.78	
2516.00	9.920	271.070	2502.96	3.56	-4.25	-158.17	40°00'09.336"N	104°56'11.385"W	0.52	
2611.00	11.150	271.250	2596.36	4.77	-3.90	-175.54	40°00'09.339"N	104°56'11.608"W	1.30	
2706.00	10.650	270.110	2689.65	5.87	-3.68	-193.50	40°00'09.342"N	104°56'11.839"W	0.57	
2800.00	9.550	268.700	2782.19	6.52	-3.84	-209.98	40°00'09.340"N	104°56'12.050"W	1.20	
2895.00	9.320	269.780	2875.90	7.09	-4.05	-225.55	40°00'09.338"N	104°56'12.250"W	0.31	
2985.00	9.820	269.050	2964.65	7.67	-4.21	-240.52	40°00'09.336"N	104°56'12.443"W	0.57	
3075.00	10.740	271.330	3053.21	8.53	-4.14	-256.57	40°00'09.337"N	104°56'12.649"W	1.12	
3164.00	10.050	270.550	3140.74	9.59	-3.87	-272.63	40°00'09.340"N	104°56'12.855"W	0.79	
3254.00	9.400	261.500	3229.46	9.32	-4.88	-287.75	40°00'09.330"N	104°56'13.050"W	1.84	
3344.00	9.330	265.630	3318.26	8.40	-6.52	-302.30	40°00'09.314"N	104°56'13.237"W	0.75	
3434.00	9.670	268.590	3407.02	8.39	-7.27	-317.13	40°00'09.306"N	104°56'13.427"W	0.66	
3524.00	10.130	272.260	3495.68	9.28	-7.14	-332.59	40°00'09.307"N	104°56'13.626"W	0.87	
3613.00	9.340	272.070	3583.40	10.59	-6.57	-347.63	40°00'09.313"N	104°56'13.819"W	0.89	
3703.00	10.190	270.800	3672.10	11.72	-6.20	-362.89	40°00'09.317"N	104°56'14.015"W	0.97	
3793.00	9.230	269.650	3760.81	12.54	-6.13	-378.07	40°00'09.317"N	104°56'14.210"W	1.09	
3883.00	9.710	272.580	3849.58	13.56	-5.83	-392.87	40°00'09.320"N	104°56'14.400"W	0.76	
3972.00	8.850	273.880	3937.42	15.07	-5.03	-407.20	40°00'09.328"N	104°56'14.585"W	0.99	

REFERENCE WELLPATH IDENTIFICATION			
Operator	KERR-MCGEE OIL & GAS ONSHORE LP (LAMBERT STATE PLANE COORD)	Slot	SLOT#08 SACK 29C-30HZ (825'FSL & 1852'FWL, SEC.31)
Area	COLORADO	Well	SACK 29C-30HZ
Field	WELD COUNTY (KERR MCGEE)	Wellbore	SACK 29C-30HZ AWB <125-17444>
Facility	SEC.31-T1N-R67W		

WELLPATH DATA (160 stations)											
MD [ft]	Inclination [°]	Azimuth [°]	TVD [ft]	Vert Sect [ft]	North [ft]	East [ft]	Latitude	Longitude	DLS [°/100ft]	Comments	
4062.00	7.590	271.190	4026.49	16.30	-4.44	-420.05	40°00'09.334"N	104°56'14.750"W	1.46		
4152.00	8.030	277.330	4115.66	17.82	-3.51	-432.22	40°00'09.343"N	104°56'14.906"W	1.05		
4242.00	6.880	273.800	4204.89	19.55	-2.35	-443.84	40°00'09.355"N	104°56'15.055"W	1.37		
4332.00	8.360	276.940	4294.10	21.28	-1.21	-455.71	40°00'09.366"N	104°56'15.208"W	1.71		
4421.00	7.220	273.460	4382.27	22.99	-0.09	-467.72	40°00'09.377"N	104°56'15.362"W	1.39		
4511.00	6.690	269.770	4471.61	23.85	0.23	-478.61	40°00'09.380"N	104°56'15.502"W	0.77		
4601.00	6.190	264.180	4561.05	23.84	-0.28	-488.68	40°00'09.375"N	104°56'15.632"W	0.89		
4691.00	4.770	263.170	4650.63	23.32	-1.22	-497.22	40°00'09.366"N	104°56'15.741"W	1.58		
4781.00	3.440	269.190	4740.40	23.16	-1.70	-503.63	40°00'09.361"N	104°56'15.824"W	1.55		
4871.00	1.920	274.760	4830.30	23.45	-1.61	-507.84	40°00'09.362"N	104°56'15.878"W	1.71		
4961.00	1.940	270.290	4920.25	23.73	-1.48	-510.86	40°00'09.363"N	104°56'15.917"W	0.17		
5050.00	1.140	311.170	5009.22	24.43	-0.89	-513.04	40°00'09.369"N	104°56'15.945"W	1.47		
5140.00	0.570	85.810	5099.21	25.06	-0.27	-513.26	40°00'09.375"N	104°56'15.947"W	1.77		
5230.00	0.370	121.630	5189.21	24.91	-0.39	-512.57	40°00'09.374"N	104°56'15.939"W	0.38		
5499.00	1.330	195.990	5458.18	21.46	-3.84	-512.69	40°00'09.340"N	104°56'15.940"W	0.48		
5589.00	0.440	179.550	5548.17	20.13	-5.19	-512.97	40°00'09.327"N	104°56'15.944"W	1.02		
5769.00	0.790	188.490	5728.16	18.22	-7.11	-513.15	40°00'09.308"N	104°56'15.946"W	0.20		
6039.00	0.990	187.370	5998.13	14.10	-11.27	-513.73	40°00'09.267"N	104°56'15.953"W	0.07		
6127.00	0.970	171.860	6086.11	12.61	-12.76	-513.72	40°00'09.252"N	104°56'15.953"W	0.30		
6217.00	0.300	64.550	6176.11	11.94	-13.41	-513.40	40°00'09.245"N	104°56'15.949"W	1.22		
6397.00	0.060	353.400	6356.11	12.22	-13.11	-512.98	40°00'09.248"N	104°56'15.944"W	0.16		
6577.00	0.230	289.990	6536.11	12.45	-12.90	-513.33	40°00'09.251"N	104°56'15.948"W	0.12		
6936.00	0.110	209.470	6895.11	12.44	-12.95	-514.18	40°00'09.250"N	104°56'15.959"W	0.07		
7115.00	0.300	333.000	7074.11	12.72	-12.68	-514.48	40°00'09.253"N	104°56'15.963"W	0.21		
7241.00	0.680	316.770	7200.10	13.59	-11.84	-515.14	40°00'09.261"N	104°56'15.972"W	0.32		
7295.00	1.290	330.830	7254.09	14.38	-11.08	-515.66	40°00'09.268"N	104°56'15.978"W	1.21		
7341.00	3.670	355.220	7300.05	16.32	-9.16	-516.03	40°00'09.287"N	104°56'15.983"W	5.55		
7385.00	6.140	353.230	7343.88	20.07	-5.42	-516.42	40°00'09.324"N	104°56'15.988"W	5.63		
7431.00	10.620	352.300	7389.38	26.75	1.23	-517.28	40°00'09.390"N	104°56'15.999"W	9.74		
7475.00	14.560	359.200	7432.32	36.32	10.78	-517.90	40°00'09.484"N	104°56'16.007"W	9.57		
7520.00	18.690	359.950	7475.43	49.18	23.65	-517.99	40°00'09.612"N	104°56'16.008"W	9.19		
7564.00	23.240	358.330	7516.50	64.91	39.39	-518.25	40°00'09.767"N	104°56'16.012"W	10.42		
7609.00	27.520	355.920	7557.15	84.19	58.64	-519.25	40°00'09.957"N	104°56'16.024"W	9.78		
7654.00	32.720	356.450	7596.06	106.76	81.16	-520.74	40°00'10.180"N	104°56'16.044"W	11.57		
7698.00	35.780	359.710	7632.43	131.51	105.90	-521.54	40°00'10.425"N	104°56'16.054"W	8.11		
7743.00	39.060	1.170	7668.16	158.81	133.24	-521.32	40°00'10.695"N	104°56'16.051"W	7.55		
7791.00	43.070	1.790	7704.35	190.24	164.76	-520.50	40°00'11.006"N	104°56'16.041"W	8.40		
7836.00	47.350	2.580	7736.04	222.05	196.66	-519.27	40°00'11.321"N	104°56'16.025"W	9.59		
7881.00	52.780	1.930	7764.92	256.40	231.13	-517.92	40°00'11.662"N	104°56'16.007"W	12.12		
7926.00	57.800	2.760	7790.54	293.23	268.08	-516.40	40°00'12.027"N	104°56'15.988"W	11.26		
7971.00	62.200	2.000	7813.03	332.03	307.00	-514.79	40°00'12.412"N	104°56'15.967"W	9.89		
8016.00	66.510	0.760	7832.50	372.48	347.55	-513.82	40°00'12.813"N	104°56'15.955"W	9.89		
8061.00	71.620	359.200	7848.58	414.44	389.56	-513.85	40°00'13.228"N	104°56'15.955"W	11.81		
8106.00	77.110	359.090	7860.70	457.74	432.88	-514.49	40°00'13.656"N	104°56'15.963"W	12.20		
8151.00	82.550	359.210	7868.64	501.99	477.15	-515.15	40°00'14.093"N	104°56'15.972"W	12.09		

**REFERENCE WELLPATH IDENTIFICATION**

Operator	KERR-MCGEE OIL & GAS ONSHORE LP (LAMBERT STATE PLANE COORD)	Slot	SLOT#08 SACK 29C-30HZ (825'FSL & 1852'FWL, SEC.31)
Area	COLORADO	Well	SACK 29C-30HZ
Field	WELD COUNTY (KERR MCGEE)	Wellbore	SACK 29C-30HZ AWB <125-17444>
Facility	SEC.31-T1N-R67W		

**WELLPATH DATA (160 stations) † = interpolated/extrapolated station**

MD [ft]	Inclination [°]	Azimuth [°]	TVD [ft]	Vert Sect [ft]	North [ft]	East [ft]	Latitude	Longitude	DLS [°/100ft]	Comments
8199.00	85.000	359.050	7873.85	549.67	524.85	-515.87	40°00'14.565"N	104°56'15.981"W	5.11	
8230.00†	86.408	0.177	7876.17	580.56	555.77	-516.08	40°00'14.870"N	104°56'15.984"W	5.81	7" CASING POINT
8256.00	87.590	1.120	7877.53	606.47	581.73	-515.79	40°00'15.127"N	104°56'15.980"W	5.81	
8346.00	90.500	0.650	7879.03	696.26	671.69	-514.40	40°00'16.016"N	104°56'15.962"W	3.28	
8526.00	90.990	1.900	7876.69	875.78	851.63	-510.39	40°00'17.794"N	104°56'15.911"W	0.75	
8705.00	90.950	0.260	7873.66	1054.33	1030.57	-507.02	40°00'19.562"N	104°56'15.868"W	0.92	
8885.00	89.880	359.050	7872.36	1234.15	1210.55	-508.10	40°00'21.341"N	104°56'15.882"W	0.90	
9064.00	89.820	358.970	7872.82	1413.06	1389.53	-511.20	40°00'23.110"N	104°56'15.921"W	0.06	
9244.00	89.750	358.620	7873.50	1592.98	1569.48	-514.98	40°00'24.888"N	104°56'15.970"W	0.20	
9424.00	89.540	358.720	7874.61	1772.92	1749.43	-519.16	40°00'26.666"N	104°56'16.024"W	0.13	
9603.00	90.000	0.150	7875.33	1951.77	1928.42	-520.93	40°00'28.435"N	104°56'16.046"W	0.84	
9783.00	89.480	1.110	7876.15	2131.44	2108.40	-518.95	40°00'30.214"N	104°56'16.021"W	0.61	
9962.00	89.440	0.700	7877.84	2310.05	2287.37	-516.12	40°00'31.982"N	104°56'15.985"W	0.23	
10142.00	89.160	1.170	7880.04	2489.65	2467.33	-513.18	40°00'33.761"N	104°56'15.947"W	0.30	
10322.00	90.210	0.420	7881.03	2669.28	2647.31	-510.69	40°00'35.539"N	104°56'15.915"W	0.72	
10501.00	91.040	359.010	7879.07	2848.09	2826.29	-511.58	40°00'37.308"N	104°56'15.927"W	0.91	
10681.00	90.890	357.260	7876.04	3028.03	3006.16	-517.43	40°00'39.086"N	104°56'16.002"W	0.98	
10860.00	88.830	356.580	7876.48	3207.02	3184.89	-527.05	40°00'40.852"N	104°56'16.126"W	1.21	
11040.00	91.380	357.290	7876.15	3387.00	3364.62	-536.67	40°00'42.628"N	104°56'16.249"W	1.47	
11220.00	90.250	0.660	7873.59	3566.87	3544.54	-539.89	40°00'44.406"N	104°56'16.291"W	1.97	
11309.00	90.740	1.780	7872.82	3655.64	3633.52	-538.00	40°00'45.285"N	104°56'16.266"W	1.37	
11399.00	90.950	1.820	7871.49	3745.34	3723.46	-535.17	40°00'46.174"N	104°56'16.230"W	0.24	
11489.00	90.860	1.380	7870.07	3835.06	3813.42	-532.66	40°00'47.063"N	104°56'16.198"W	0.50	
11579.00	91.360	1.450	7868.33	3924.79	3903.37	-530.44	40°00'47.952"N	104°56'16.169"W	0.56	
11669.00	90.580	1.110	7866.80	4014.55	3993.34	-528.43	40°00'48.841"N	104°56'16.143"W	0.95	
11758.00	90.030	0.140	7866.33	4103.38	4082.33	-527.45	40°00'49.721"N	104°56'16.131"W	1.25	
11848.00	90.550	0.420	7865.87	4193.25	4172.33	-527.01	40°00'50.610"N	104°56'16.125"W	0.66	
11938.00	90.060	0.090	7865.39	4283.12	4262.32	-526.61	40°00'51.500"N	104°56'16.120"W	0.66	
12028.00	90.000	0.320	7865.35	4372.99	4352.32	-526.29	40°00'52.389"N	104°56'16.116"W	0.26	
12118.00	90.520	359.830	7864.94	4462.87	4442.32	-526.17	40°00'53.278"N	104°56'16.115"W	0.79	
12208.00	89.900	0.080	7864.61	4552.77	4532.32	-526.24	40°00'54.168"N	104°56'16.116"W	0.74	
12297.00	90.550	0.260	7864.26	4641.64	4621.32	-525.98	40°00'55.047"N	104°56'16.112"W	0.76	
12387.00	90.360	1.180	7863.55	4731.47	4711.31	-524.85	40°00'55.937"N	104°56'16.098"W	1.04	
12477.00	91.260	0.230	7862.27	4821.28	4801.29	-523.74	40°00'56.826"N	104°56'16.083"W	1.45	
12566.00	90.710	0.240	7860.74	4910.14	4890.27	-523.38	40°00'57.705"N	104°56'16.079"W	0.62	
12745.00	90.650	359.650	7858.62	5088.92	5069.26	-523.55	40°00'59.474"N	104°56'16.081"W	0.33	
12925.00	90.710	0.930	7856.48	5268.64	5249.24	-522.64	40°01'01.253"N	104°56'16.069"W	0.71	
13105.00	90.550	1.310	7854.50	5448.20	5429.20	-519.12	40°01'03.031"N	104°56'16.024"W	0.23	
13284.00	90.370	1.000	7853.07	5626.76	5608.15	-515.51	40°01'04.799"N	104°56'15.978"W	0.20	
13464.00	90.460	359.930	7851.76	5806.46	5788.14	-514.05	40°01'06.578"N	104°56'15.959"W	0.60	
13553.00	89.720	0.500	7851.62	5895.33	5877.14	-513.72	40°01'07.458"N	104°56'15.955"W	1.05	
13733.00	90.430	0.680	7851.39	6075.01	6057.13	-511.86	40°01'09.236"N	104°56'15.931"W	0.41	
13913.00	89.780	0.560	7851.06	6254.68	6237.12	-509.92	40°01'11.015"N	104°56'15.906"W	0.37	
14094.00	89.660	359.930	7851.94	6435.42	6418.11	-509.14	40°01'12.804"N	104°56'15.896"W	0.35	
14184.00	90.430	0.240	7851.87	6525.30	6508.11	-509.01	40°01'13.693"N	104°56'15.895"W	0.92	

### REFERENCE WELLPATH IDENTIFICATION

Operator	KERR-MCGEE OIL & GAS ONSHORE LP (LAMBERT STATE PLANE COORD)	Slot	SLOT#08 SACK 29C-30HZ (825'FSL & 1852'FWL, SEC.31)
Area	COLORADO	Well	SACK 29C-30HZ
Field	WELD COUNTY (KERR MCGEE)	Wellbore	SACK 29C-30HZ AWB <125-17444>
Facility	SEC.31-T1N-R67W		

### WELLPATH DATA (160 stations)

MD [ft]	Inclination [°]	Azimuth [°]	TVD [ft]	Vert Sect [ft]	North [ft]	East [ft]	Latitude	Longitude	DLS [°/100ft]	Comments
14274.00	91.720	0.790	7850.18	6615.13	6598.09	-508.20	40°01'14.582"N	104°56'15.884"W	1.56	
14364.00	91.130	0.580	7847.94	6704.93	6688.05	-507.12	40°01'15.471"N	104°56'15.870"W	0.70	
14453.00	90.830	0.650	7846.42	6793.76	6777.04	-506.17	40°01'16.351"N	104°56'15.858"W	0.35	
14543.00	90.360	0.110	7845.49	6883.61	6867.03	-505.57	40°01'17.240"N	104°56'15.850"W	0.80	
14723.00	91.820	0.940	7842.06	7063.26	7046.98	-503.92	40°01'19.018"N	104°56'15.829"W	0.93	
14903.00	89.560	1.550	7839.90	7242.78	7226.91	-500.01	40°01'20.797"N	104°56'15.779"W	1.30	
15082.00	88.890	1.450	7842.32	7421.26	7405.84	-495.33	40°01'22.565"N	104°56'15.719"W	0.38	
15262.00	90.030	0.580	7844.01	7600.84	7585.79	-492.14	40°01'24.343"N	104°56'15.678"W	0.80	
15351.00	90.060	0.740	7843.94	7689.67	7674.79	-491.11	40°01'25.223"N	104°56'15.665"W	0.18	
15531.00	88.860	0.120	7845.64	7869.37	7854.77	-489.76	40°01'27.001"N	104°56'15.648"W	0.75	
15620.00	90.240	359.840	7846.34	7958.26	7943.77	-489.79	40°01'27.881"N	104°56'15.648"W	1.58	
15710.00	90.980	359.050	7845.38	8048.18	8033.76	-490.67	40°01'28.770"N	104°56'15.659"W	1.20	
15800.00	91.410	359.490	7843.50	8138.10	8123.73	-491.81	40°01'29.659"N	104°56'15.674"W	0.68	
15979.00	91.200	359.460	7839.43	8316.91	8302.67	-493.45	40°01'31.428"N	104°56'15.695"W	0.12	
16159.00	91.980	0.320	7834.43	8496.63	8482.60	-493.80	40°01'33.206"N	104°56'15.700"W	0.64	
16339.00	92.210	0.270	7827.85	8676.25	8662.48	-492.87	40°01'34.983"N	104°56'15.688"W	0.13	
16428.00	90.950	0.890	7825.40	8765.05	8751.44	-491.97	40°01'35.862"N	104°56'15.676"W	1.58	
16518.00	90.770	0.660	7824.05	8854.87	8841.42	-490.75	40°01'36.752"N	104°56'15.661"W	0.32	
16608.00	90.980	0.590	7822.67	8944.69	8931.40	-489.77	40°01'37.641"N	104°56'15.648"W	0.25	
16787.00	91.200	0.560	7819.27	9123.34	9110.36	-487.98	40°01'39.409"N	104°56'15.625"W	0.12	
16877.00	91.100	0.530	7817.46	9213.17	9200.34	-487.12	40°01'40.299"N	104°56'15.614"W	0.12	
17057.00	91.810	0.690	7812.89	9392.79	9380.27	-485.21	40°01'42.077"N	104°56'15.589"W	0.40	
17236.00	90.740	0.270	7808.91	9571.44	9559.22	-483.71	40°01'43.845"N	104°56'15.570"W	0.64	
17392.00	90.860	0.340	7806.73	9727.19	9715.20	-482.88	40°01'45.387"N	104°56'15.559"W	0.09	LAST BHI MWD+IFR SURVEY
17444.00	90.860	0.340	7805.95	9779.11	9767.19	-482.57	40°01'45.900"N	104°56'15.555"W	0.00	PROJECTION TO BIT

### HOLE & CASING SECTIONS - Ref Wellbore: SACK 29C-30HZ AWB <125-17444> Ref Wellpath: SACK 29C-30HZ AWP

String/Diameter	Start MD [ft]	End MD [ft]	Interval [ft]	Start TVD [ft]	End TVD [ft]	Start N/S [ft]	Start E/W [ft]	End N/S [ft]	End E/W [ft]
13.5in Open Hole	25.00	1337.00	1312.00	25.00	1336.97	0.00	0.00	-0.15	6.95
9.625in Casing Surface	25.00	1327.00	1302.00	25.00	1326.97	0.00	0.00	-0.13	6.96
8.75in Open Hole	1337.00	8240.00	6903.00	1336.97	7876.76	-0.15	6.95	565.75	-516.02
7in Casing Intermediate	25.00	8230.00	8205.00	25.00	7876.17	0.00	0.00	555.77	-516.08
6.125in Open Hole	8240.00	17444.00	9204.00	7876.76	7805.95	565.75	-516.02	9767.19	-482.57



# Actual Wellpath Report

SACK 29C-30HZ AWP  
Page 6 of 7



REFERENCE WELLPATH IDENTIFICATION			
Operator	KERR-MCGEE OIL & GAS ONSHORE LP (LAMBERT STATE PLANE COORD)	Slot	SLOT#08 SACK 29C-30HZ (825'FSL & 1852'FWL, SEC.31)
Area	COLORADO	Well	SACK 29C-30HZ
Field	WELD COUNTY (KERR MCGEE)	Wellbore	SACK 29C-30HZ AWB <125-17444>
Facility	SEC.31-T1N-R67W		

WELLPATH COMPOSITION - Ref Wellbore: SACK 29C-30HZ AWB <125-17444>    Ref Wellpath: SACK 29C-30HZ AWP				
Start MD [ft]	End MD [ft]	Positional Uncertainty Model	Log Name/Comment	Wellbore
25.00	1273.00	Generic gyro - continuous (Standard)	MS GYRO SURVEYS <125-1273>	SACK 29C-30HZ AWB <125-17444>
1273.00	8199.00	NaviTrak (MAGCORR,IFR)	BHI NAVITRAK MWD+IFR 8 3/4" <1331-8199	SACK 29C-30HZ AWB <125-17444>
8199.00	17392.00	NaviTrak (MAGCORR,IFR)	BHI NAVITRAK MWD+IFR 6 1/8" <8256-17392>	SACK 29C-30HZ AWB <125-17444>
17392.00	17444.00	Blind Drilling (std)	Projection to bit	SACK 29C-30HZ AWB <125-17444>

REFERENCE WELLPATH IDENTIFICATION			
Operator	KERR-MCGEE OIL & GAS ONSHORE LP (LAMBERT STATE PLANE COORD)	Slot	SLOT#08 SACK 29C-30HZ (825'FSL & 1852'FWL, SEC.31)
Area	COLORADO	Well	SACK 29C-30HZ
Field	WELD COUNTY (KERR MCGEE)	Wellbore	SACK 29C-30HZ AWB <125-17444>
Facility	SEC.31-T1N-R67W		

WELLPATH COMMENTS					
MD [ft]	Inclination [°]	Azimuth [°]	TVD [ft]	Comment	
25.00	0.000	70.740	25.00	TIE ON	
125.00	0.310	70.740	125.00	BEGIN GYRO SURVEYS	
1273.00	0.190	166.080	1272.98	TIE ONTO GYRO SURVEYS	
1331.00	0.150	185.640	1330.97	BEGIN BHI MWD+IFR SURVEYS	
8230.00	86.408	0.177	7876.17	7" CASING POINT	
17392.00	90.860	0.340	7806.73	LAST BHI MWD+IFR SURVEY	
17444.00	90.860	0.340	7805.95	PROJECTION TO BIT	