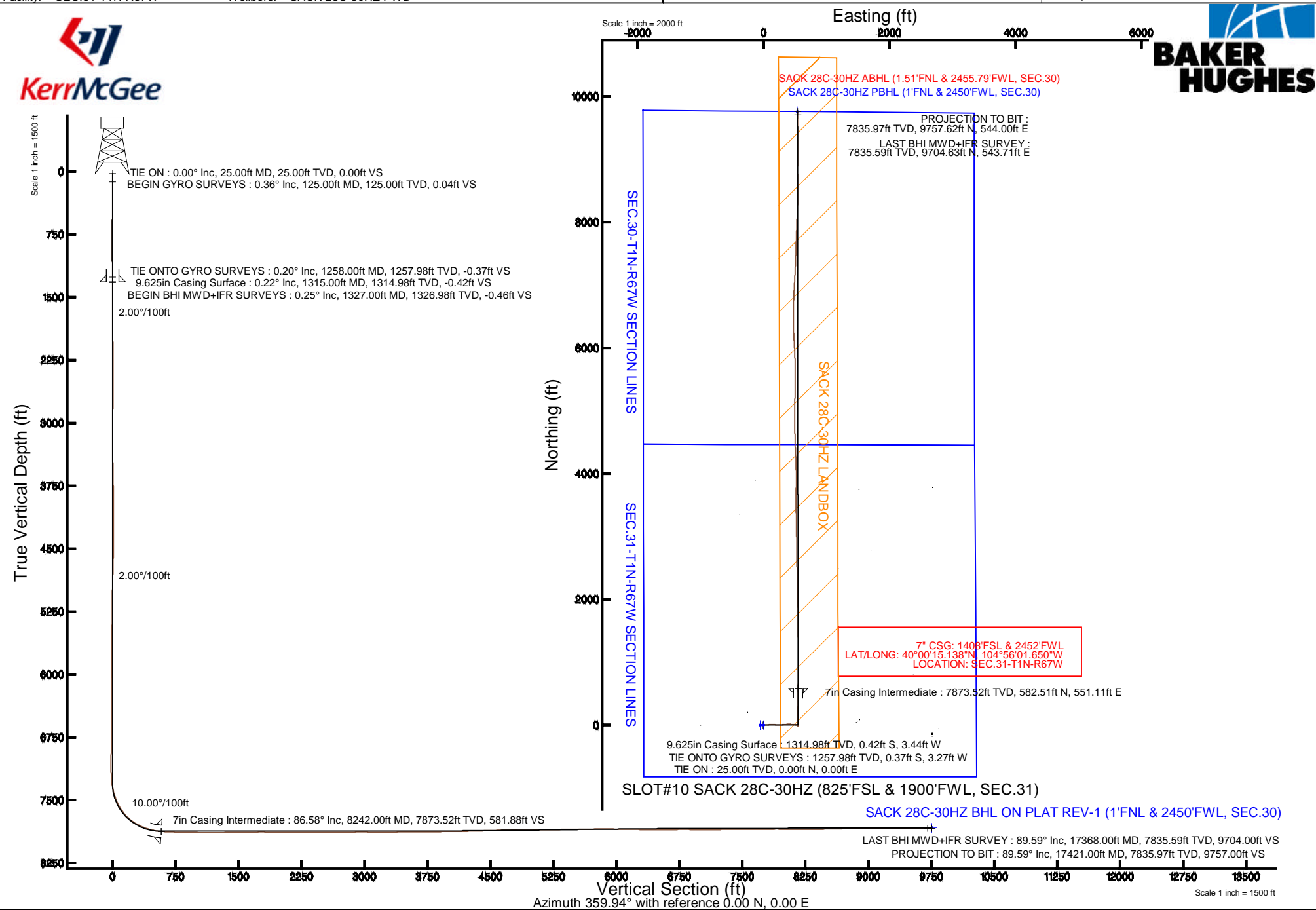


Location:	COLORADO	Slot:	SLOT#10 SACK 28C-30HZ (825'FSL & 1900'FWL, SEC.31)
Field:	WELD COUNTY (KERR MCGEE)	Well:	SACK 28C-30HZ
Facility:	SEC.31-T1N-R67W	Wellbore:	SACK 28C-30HZ PWB

True vertical depths are referenced to PRECISION 595 (25KB) (RKB)	Grid System: NAD83 / Lambert Colorado SP, Northern Zone (501), US feet
Measured depths are referenced to PRECISION 595 (25KB) (RKB)	North Reference: True north
PRECISION 595 (25KB) (RKB) to Mean Sea Level: 5080 feet	Scale: True distance
Mean Sea Level to Mud line (At Slot: SLOT#10 SACK 28C-30HZ (825FSL & 1900FWL, SEC.31): 0 feet	Depths are in feet
Coordinates are in feet referenced to Slot	Created by: robiale01 on 1/26/2015



REFERENCE WELLPATH IDENTIFICATION			
Operator	KERR-MCGEE OIL & GAS ONSHORE LP (LAMBERT STATE PLANE COORD)	Slot	SLOT#10 SACK 28C-30HZ (825'FSL & 1900'FWL, SEC.31)
Area	COLORADO	Well	SACK 28C-30HZ
Field	WELD COUNTY (KERR MCGEE)	Wellbore	SACK 28C-30HZ AWB <125-17421>
Facility	SEC.31-T1N-R67W		

REPORT SETUP INFORMATION			
Projection System	NAD83 / Lambert Colorado SP, Northern Zone (501), US feet	Software System	WellArchitect® 4.0.0
North Reference	True	User	Robiale01
Scale	0.999966	Report Generated	1/26/2015 at 9:41:07 AM
Convergence at slot	n/a	Database/Source file	WellArchitectDB/SACK_28C-30HZ_AWB_125-17421_.xml

WELLPATH LOCATION						
	Local coordinates		Grid coordinates		Geographic coordinates	
	North[ft]	East[ft]	Easting[US ft]	Northing[US ft]	Latitude	Longitude
Slot Location	0.02	1005.20	3158067.07	1244299.06	40°00'09.382"N	104°56'08.732"W
Facility Reference Pt			3157061.92	1244292.69	40°00'09.382"N	104°56'21.649"W
Field Reference Pt			3197771.84	1268891.29	40°04'09.600"N	104°47'36.000"W

WELLPATH DATUM			
Calculation method	Minimum curvature	PRECISION 595 (25'KB) (RKB) to Facility Vertical Datum	5080.00ft
Horizontal Reference Pt	Slot	PRECISION 595 (25'KB) (RKB) to Mean Sea Level	5080.00ft
Vertical Reference Pt	PRECISION 595 (25'KB) (RKB)	PRECISION 595 (25'KB) (RKB) to Mud Line at Slot (SLOT#10 SACK 28C-30HZ (825'FSL & 1900'FWL, SEC.31))	5080.00ft
MD Reference Pt	PRECISION 595 (25'KB) (RKB)	Section Origin	N 0.00, E 0.00 ft
Field Vertical Reference	Mean Sea Level	Section Azimuth	3.19°

REFERENCE WELLPATH IDENTIFICATION			
Operator	KERR-MCGEE OIL & GAS ONSHORE LP (LAMBERT STATE PLANE COORD)	Slot	SLOT#10 SACK 28C-30HZ (825'FSL & 1900'FWL, SEC.31)
Area	COLORADO	Well	SACK 28C-30HZ
Field	WELD COUNTY (KERR MCGEE)	Wellbore	SACK 28C-30HZ AWB <125-17421>
Facility	SEC.31-T1N-R67W		

WELLPATH DATA (137 stations) † = interpolated/extrapolated station										
MD [ft]	Inclination [°]	Azimuth [°]	TVD [ft]	Vert Sect [ft]	North [ft]	East [ft]	Latitude	Longitude	DLS [°/100ft]	Comments
0.00†	0.000	277.130	0.00	0.00	0.00	0.00	40°00'09.382"N	104°56'08.732"W	0.00	
25.00	0.000	277.130	25.00	0.00	0.00	0.00	40°00'09.382"N	104°56'08.732"W	0.00	TIE ON
125.00	0.360	277.130	125.00	0.02	0.04	-0.31	40°00'09.382"N	104°56'08.736"W	0.36	BEGIN GYRO SURVEYS
225.00	0.430	279.860	225.00	0.09	0.14	-0.99	40°00'09.383"N	104°56'08.745"W	0.07	
325.00	0.500	256.940	324.99	0.01	0.11	-1.79	40°00'09.383"N	104°56'08.755"W	0.20	
425.00	0.410	237.540	424.99	-0.32	-0.18	-2.51	40°00'09.380"N	104°56'08.764"W	0.18	
525.00	0.540	233.010	524.99	-0.84	-0.66	-3.19	40°00'09.375"N	104°56'08.773"W	0.14	
625.00	0.140	197.080	624.99	-1.26	-1.06	-3.61	40°00'09.372"N	104°56'08.778"W	0.43	
725.00	0.180	122.890	724.98	-1.45	-1.26	-3.51	40°00'09.370"N	104°56'08.777"W	0.20	
825.00	0.120	119.740	824.98	-1.58	-1.40	-3.29	40°00'09.368"N	104°56'08.774"W	0.06	
925.00	0.220	69.740	924.98	-1.55	-1.38	-3.02	40°00'09.368"N	104°56'08.771"W	0.17	
1025.00	0.240	354.300	1024.98	-1.27	-1.11	-2.86	40°00'09.371"N	104°56'08.769"W	0.28	
1125.00	0.220	349.230	1124.98	-0.87	-0.71	-2.91	40°00'09.375"N	104°56'08.769"W	0.03	
1225.00	0.260	295.900	1224.98	-0.60	-0.42	-3.15	40°00'09.378"N	104°56'08.773"W	0.22	
1258.00	0.200	289.920	1257.98	-0.55	-0.37	-3.27	40°00'09.378"N	104°56'08.774"W	0.20	TIE ONTO GYRO SURVEYS
1327.00	0.250	211.160	1326.98	-0.65	-0.46	-3.47	40°00'09.377"N	104°56'08.777"W	0.42	BEGIN BHI MWD+IFR SURVEYS
1378.00	0.500	95.060	1377.98	-0.76	-0.57	-3.30	40°00'09.376"N	104°56'08.774"W	1.27	
1472.00	2.150	84.120	1471.95	-0.49	-0.43	-1.14	40°00'09.378"N	104°56'08.747"W	1.77	
1567.00	2.810	76.210	1566.86	0.47	0.31	2.90	40°00'09.385"N	104°56'08.695"W	0.78	
1662.00	5.400	81.810	1661.61	2.03	1.50	9.58	40°00'09.397"N	104°56'08.609"W	2.76	
1756.00	7.220	88.170	1755.04	3.42	2.32	19.87	40°00'09.405"N	104°56'08.477"W	2.07	
1851.00	9.900	89.880	1848.97	4.42	2.53	34.00	40°00'09.407"N	104°56'08.295"W	2.83	
1946.00	10.740	86.600	1942.44	5.90	3.07	51.00	40°00'09.412"N	104°56'08.077"W	1.08	
2041.00	10.100	84.930	2035.87	8.12	4.33	68.14	40°00'09.425"N	104°56'07.856"W	0.74	
2135.00	9.370	85.180	2128.51	10.37	5.70	83.97	40°00'09.438"N	104°56'07.653"W	0.78	
2325.00	9.320	87.050	2315.99	14.17	7.79	114.75	40°00'09.459"N	104°56'07.257"W	0.16	
2514.00	9.170	89.370	2502.54	16.81	8.75	145.09	40°00'09.468"N	104°56'06.868"W	0.21	
2609.00	10.420	94.020	2596.15	17.19	8.23	161.23	40°00'09.463"N	104°56'06.660"W	1.56	
2798.00	10.160	96.130	2782.11	16.09	5.25	194.86	40°00'09.434"N	104°56'06.228"W	0.24	
2986.00	10.140	95.680	2967.17	14.52	1.84	227.81	40°00'09.400"N	104°56'05.805"W	0.04	
3255.00	6.830	86.800	3233.20	15.27	0.39	267.36	40°00'09.386"N	104°56'05.296"W	1.32	
3435.00	7.740	80.010	3411.75	19.23	3.09	289.98	40°00'09.413"N	104°56'05.006"W	0.70	
3615.00	9.130	84.320	3589.80	24.19	6.61	316.13	40°00'09.447"N	104°56'04.670"W	0.85	
3794.00	9.220	82.820	3766.51	28.96	9.80	344.49	40°00'09.479"N	104°56'04.305"W	0.14	
3974.00	9.290	87.140	3944.17	33.09	12.33	373.31	40°00'09.504"N	104°56'03.935"W	0.39	
4154.00	9.260	89.750	4121.82	35.49	13.12	402.30	40°00'09.512"N	104°56'03.562"W	0.23	
4334.00	8.880	95.060	4299.57	35.91	11.96	430.62	40°00'09.500"N	104°56'03.198"W	0.51	
4424.00	9.480	91.710	4388.42	35.87	11.12	444.95	40°00'09.492"N	104°56'03.014"W	0.89	
4514.00	10.320	89.800	4477.08	36.54	10.93	460.42	40°00'09.490"N	104°56'02.816"W	1.00	
4693.00	8.860	98.670	4653.58	36.17	8.91	490.09	40°00'09.470"N	104°56'02.434"W	1.16	
4873.00	8.200	102.910	4831.59	32.68	3.95	516.30	40°00'09.421"N	104°56'02.097"W	0.51	
4963.00	7.030	103.130	4920.79	30.65	1.26	527.92	40°00'09.394"N	104°56'01.948"W	1.30	
5143.00	3.500	93.570	5100.01	28.71	-1.58	544.14	40°00'09.366"N	104°56'01.740"W	2.01	
5322.00	1.020	150.590	5278.87	27.33	-3.31	550.38	40°00'09.349"N	104°56'01.660"W	1.71	
5502.00	0.770	183.380	5458.85	24.77	-5.91	551.09	40°00'09.324"N	104°56'01.650"W	0.31	

REFERENCE WELLPATH IDENTIFICATION

Operator	KERR-MCGEE OIL & GAS ONSHORE LP (LAMBERT STATE PLANE COORD)	Slot	SLOT#10 SACK 28C-30HZ (825'FSL & 1900'FWL, SEC.31)
Area	COLORADO	Well	SACK 28C-30HZ
Field	WELD COUNTY (KERR MCGEE)	Wellbore	SACK 28C-30HZ AWB <125-17421>
Facility	SEC.31-T1N-R67W		

WELLPATH DATA (137 stations)

† = interpolated/extrapolated station

MD [ft]	Inclination [°]	Azimuth [°]	TVD [ft]	Vert Sect [ft]	North [ft]	East [ft]	Latitude	Longitude	DLS [°/100ft]	Comments
5772.00	0.440	224.410	5728.84	22.18	-8.46	550.26	40°00'09.298"N	104°56'01.661"W	0.19	
6221.00	0.890	242.440	6177.81	19.10	-11.31	545.96	40°00'09.270"N	104°56'01.716"W	0.11	
6490.00	0.580	227.280	6446.78	17.05	-13.20	543.11	40°00'09.252"N	104°56'01.753"W	0.14	
6940.00	0.130	213.610	6896.77	14.98	-15.17	541.15	40°00'09.232"N	104°56'01.778"W	0.10	
7209.00	0.390	80.710	7165.77	14.91	-15.28	541.89	40°00'09.231"N	104°56'01.769"W	0.18	
7299.00	4.560	359.970	7255.67	18.55	-11.65	542.19	40°00'09.267"N	104°56'01.765"W	5.02	
7344.00	9.220	0.690	7300.34	23.94	-6.25	542.23	40°00'09.320"N	104°56'01.764"W	10.36	
7389.00	11.100	2.370	7344.63	31.88	1.68	542.45	40°00'09.399"N	104°56'01.761"W	4.23	
7434.00	12.900	3.640	7388.64	41.23	11.03	542.95	40°00'09.491"N	104°56'01.755"W	4.04	
7479.00	16.390	2.810	7432.18	52.61	22.38	543.58	40°00'09.603"N	104°56'01.747"W	7.77	
7523.00	20.020	358.160	7473.97	66.32	36.12	543.64	40°00'09.739"N	104°56'01.746"W	8.88	
7568.00	23.770	354.830	7515.72	82.97	52.85	542.58	40°00'09.904"N	104°56'01.760"W	8.78	
7613.00	27.420	356.940	7556.30	102.25	72.24	541.21	40°00'10.096"N	104°56'01.777"W	8.36	
7658.00	31.220	358.820	7595.52	124.19	94.25	540.41	40°00'10.313"N	104°56'01.788"W	8.69	
7703.00	35.570	359.750	7633.09	148.90	119.01	540.12	40°00'10.558"N	104°56'01.791"W	9.73	
7748.00	40.550	0.370	7668.51	176.59	146.75	540.15	40°00'10.832"N	104°56'01.791"W	11.10	
7793.00	45.960	2.680	7701.27	207.40	177.56	541.01	40°00'11.137"N	104°56'01.780"W	12.52	
7838.00	50.320	2.190	7731.29	240.90	211.03	542.42	40°00'11.467"N	104°56'01.762"W	9.72	
7883.00	55.200	2.180	7758.52	276.71	246.82	543.79	40°00'11.821"N	104°56'01.744"W	10.84	
7928.00	60.080	1.690	7782.59	314.70	284.80	545.07	40°00'12.196"N	104°56'01.728"W	10.88	
7973.00	64.270	1.320	7803.59	354.47	324.57	546.11	40°00'12.589"N	104°56'01.714"W	9.34	
8018.00	67.630	1.140	7821.93	395.53	365.65	546.99	40°00'12.995"N	104°56'01.703"W	7.48	
8062.00	70.610	0.920	7837.61	436.61	406.75	547.73	40°00'13.402"N	104°56'01.693"W	6.79	
8107.00	74.650	1.090	7851.04	479.52	449.68	548.48	40°00'13.826"N	104°56'01.684"W	8.99	
8152.00	78.030	1.380	7861.67	523.21	493.39	549.43	40°00'14.258"N	104°56'01.672"W	7.54	
8197.00	82.550	1.130	7869.26	567.53	537.73	550.40	40°00'14.696"N	104°56'01.659"W	10.06	
8242.00†	86.575	0.688	7873.52	612.28	582.51	551.11	40°00'15.138"N	104°56'01.650"W	9.00	7" CASING POINT
8252.00	87.470	0.590	7874.04	622.26	592.50	551.22	40°00'15.237"N	104°56'01.649"W	9.00	
8355.00	87.440	0.590	7878.61	725.05	695.39	552.28	40°00'16.254"N	104°56'01.635"W	0.03	
8550.00	89.320	0.560	7884.12	919.76	890.29	554.23	40°00'18.180"N	104°56'01.610"W	0.96	
8715.00	89.690	359.980	7885.55	1084.54	1055.28	555.01	40°00'19.811"N	104°56'01.600"W	0.42	
8894.00	90.150	359.230	7885.80	1263.19	1234.28	553.78	40°00'21.579"N	104°56'01.616"W	0.49	
9074.00	90.670	359.410	7884.51	1442.77	1414.26	551.64	40°00'23.358"N	104°56'01.643"W	0.31	
9253.00	91.040	359.300	7881.84	1621.35	1593.23	549.63	40°00'25.127"N	104°56'01.669"W	0.22	
9433.00	90.030	359.040	7880.16	1800.90	1773.20	547.02	40°00'26.905"N	104°56'01.702"W	0.58	
9613.00	88.980	358.610	7881.72	1980.37	1953.15	543.33	40°00'28.684"N	104°56'01.750"W	0.63	
9703.00	90.000	358.110	7882.52	2070.04	2043.11	540.75	40°00'29.573"N	104°56'01.783"W	1.26	
9793.00	90.090	358.980	7882.45	2159.74	2133.08	538.47	40°00'30.462"N	104°56'01.812"W	0.97	
9882.00	89.930	359.340	7882.43	2248.52	2222.07	537.16	40°00'31.341"N	104°56'01.829"W	0.44	
9972.00	89.510	358.690	7882.87	2338.28	2312.05	535.62	40°00'32.230"N	104°56'01.849"W	0.86	
10152.00	90.120	359.180	7883.45	2517.79	2492.02	532.27	40°00'34.009"N	104°56'01.892"W	0.43	
10331.00	90.060	359.600	7883.17	2696.39	2671.01	530.37	40°00'35.778"N	104°56'01.916"W	0.24	
10421.00	90.860	359.420	7882.45	2786.20	2761.00	529.60	40°00'36.667"N	104°56'01.926"W	0.91	
10602.00	90.920	358.610	7879.64	2966.70	2941.95	526.48	40°00'38.455"N	104°56'01.966"W	0.45	
10691.00	88.450	359.120	7880.13	3055.44	3030.93	524.72	40°00'39.335"N	104°56'01.988"W	2.83	

REFERENCE WELLPATH IDENTIFICATION			
Operator	KERR-MCGEE OIL & GAS ONSHORE LP (LAMBERT STATE PLANE COORD)	Slot	SLOT#10 SACK 28C-30HZ (825'FSL & 1900'FWL, SEC.31)
Area	COLORADO	Well	SACK 28C-30HZ
Field	WELD COUNTY (KERR MCGEE)	Wellbore	SACK 28C-30HZ AWB <125-17421>
Facility	SEC.31-T1N-R67W		

WELLPATH DATA (137 stations)										
MD [ft]	Inclination [°]	Azimuth [°]	TVD [ft]	Vert Sect [ft]	North [ft]	East [ft]	Latitude	Longitude	DLS [°/100ft]	Comments
10781.00	89.780	359.060	7881.52	3145.19	3120.90	523.29	40°00'40.224"N	104°56'02.007"W	1.48	
10871.00	90.120	358.640	7881.59	3234.93	3210.88	521.49	40°00'41.113"N	104°56'02.030"W	0.60	
11051.00	90.770	359.270	7880.20	3414.43	3390.85	518.20	40°00'42.891"N	104°56'02.072"W	0.50	
11230.00	90.920	359.720	7877.56	3593.04	3569.82	516.63	40°00'44.660"N	104°56'02.092"W	0.26	
11410.00	90.060	1.220	7876.02	3772.83	3749.80	518.10	40°00'46.439"N	104°56'02.073"W	0.96	
11589.00	90.460	359.830	7875.20	3951.63	3928.79	519.74	40°00'48.207"N	104°56'02.052"W	0.81	
11769.00	91.140	358.850	7872.69	4131.20	4108.75	517.67	40°00'49.986"N	104°56'02.079"W	0.66	
11949.00	91.230	357.090	7868.97	4310.41	4288.59	511.30	40°00'51.763"N	104°56'02.161"W	0.98	
12038.00	91.690	357.510	7866.70	4398.91	4377.47	507.10	40°00'52.641"N	104°56'02.215"W	0.70	
12128.00	92.090	357.730	7863.73	4488.43	4467.34	503.37	40°00'53.530"N	104°56'02.262"W	0.51	
12308.00	91.930	359.110	7857.42	4667.69	4647.16	498.41	40°00'55.307"N	104°56'02.326"W	0.77	
12487.00	89.440	0.050	7855.28	4846.31	4826.12	497.10	40°00'57.075"N	104°56'02.343"W	1.49	
12667.00	90.580	0.000	7855.25	5026.03	5006.12	497.18	40°00'58.854"N	104°56'02.342"W	0.63	
12846.00	91.070	0.840	7852.67	5204.80	5185.09	498.49	40°01'00.623"N	104°56'02.325"W	0.54	
13026.00	90.760	0.970	7849.80	5384.64	5365.05	501.33	40°01'02.401"N	104°56'02.288"W	0.19	
13116.00	90.030	0.710	7849.18	5474.56	5455.04	502.65	40°01'03.290"N	104°56'02.271"W	0.86	
13296.00	91.410	359.320	7846.91	5654.26	5635.01	502.70	40°01'05.069"N	104°56'02.271"W	1.09	
13475.00	90.030	358.240	7844.66	5832.71	5813.95	498.89	40°01'06.837"N	104°56'02.320"W	0.98	
13655.00	89.500	357.460	7845.40	6011.92	5993.82	492.13	40°01'08.615"N	104°56'02.406"W	0.52	
13745.00	90.360	356.590	7845.51	6101.40	6083.70	487.46	40°01'09.503"N	104°56'02.467"W	1.36	
13834.00	87.990	356.270	7846.79	6189.77	6172.51	481.92	40°01'10.381"N	104°56'02.538"W	2.69	
14014.00	88.180	358.480	7852.81	6368.73	6352.21	473.68	40°01'12.156"N	104°56'02.644"W	1.23	
14194.00	91.480	1.350	7853.34	6548.39	6532.16	473.42	40°01'13.935"N	104°56'02.647"W	2.43	
14284.00	90.890	0.510	7851.48	6638.30	6622.13	474.88	40°01'14.824"N	104°56'02.628"W	1.14	
14373.00	90.460	2.360	7850.43	6727.25	6711.09	477.11	40°01'15.703"N	104°56'02.599"W	2.13	
14463.00	90.060	1.980	7850.03	6817.23	6801.03	480.51	40°01'16.592"N	104°56'02.556"W	0.61	
14643.00	89.070	3.490	7851.39	6997.21	6980.81	489.10	40°01'18.368"N	104°56'02.445"W	1.00	
14733.00	90.360	3.180	7851.84	7087.21	7070.66	494.34	40°01'19.256"N	104°56'02.378"W	1.47	
14912.00	90.700	2.730	7850.18	7266.20	7249.41	503.56	40°01'21.023"N	104°56'02.259"W	0.32	
15092.00	90.360	1.750	7848.52	7446.16	7429.26	510.60	40°01'22.800"N	104°56'02.169"W	0.58	
15271.00	90.430	1.700	7847.28	7625.10	7608.18	515.99	40°01'24.568"N	104°56'02.099"W	0.05	
15361.00	90.640	2.070	7846.44	7715.07	7698.12	518.95	40°01'25.457"N	104°56'02.061"W	0.47	
15541.00	90.120	2.180	7845.25	7895.04	7877.99	525.62	40°01'27.235"N	104°56'01.976"W	0.30	
15631.00	89.810	2.210	7845.31	7985.02	7967.93	529.07	40°01'28.123"N	104°56'01.931"W	0.35	
15720.00	89.630	1.940	7845.74	8074.01	8056.87	532.29	40°01'29.002"N	104°56'01.890"W	0.36	
15810.00	89.750	1.770	7846.23	8163.98	8146.82	535.20	40°01'29.891"N	104°56'01.852"W	0.23	
15990.00	89.900	0.810	7846.78	8343.88	8326.77	539.26	40°01'31.670"N	104°56'01.800"W	0.54	
16169.00	91.570	359.970	7844.48	8522.64	8505.74	540.48	40°01'33.438"N	104°56'01.784"W	1.04	
16348.00	91.160	359.270	7840.22	8701.24	8684.69	539.29	40°01'35.207"N	104°56'01.800"W	0.45	
16438.00	90.360	359.600	7839.02	8791.04	8774.68	538.40	40°01'36.096"N	104°56'01.811"W	0.96	
16618.00	90.310	0.890	7837.97	8970.80	8954.67	539.17	40°01'37.875"N	104°56'01.801"W	0.72	
16707.00	90.460	0.410	7837.37	9059.71	9043.66	540.18	40°01'38.754"N	104°56'01.788"W	0.57	
16887.00	90.120	359.750	7836.46	9239.44	9223.66	540.43	40°01'40.533"N	104°56'01.785"W	0.41	
17067.00	90.490	0.170	7835.50	9419.15	9403.65	540.31	40°01'42.312"N	104°56'01.786"W	0.31	
17246.00	89.840	1.070	7834.99	9597.96	9582.64	542.24	40°01'44.080"N	104°56'01.761"W	0.62	

REFERENCE WELLPATH IDENTIFICATION			
Operator	KERR-MCGEE OIL & GAS ONSHORE LP (LAMBERT STATE PLANE COORD)	Slot	SLOT#10 SACK 28C-30HZ (825'FSL & 1900'FWL, SEC.31)
Area	COLORADO	Well	SACK 28C-30HZ
Field	WELD COUNTY (KERR MCGEE)	Wellbore	SACK 28C-30HZ AWB <125-17421>
Facility	SEC.31-T1N-R67W		

WELLPATH DATA (137 stations)										
MD [ft]	Inclination [°]	Azimuth [°]	TVD [ft]	Vert Sect [ft]	North [ft]	East [ft]	Latitude	Longitude	DLS [°/100ft]	Comments
17368.00	89.590	0.310	7835.59	9719.85	9704.63	543.71	40°01'45.286"N	104°56'01.742"W	0.66	LAST BHI MWD+IFR SURVEY
17421.00	89.590	0.310	7835.97	9772.78	9757.62	544.00	40°01'45.810"N	104°56'01.739"W	0.00	PROJECTION TO BIT

HOLE & CASING SECTIONS - Ref Wellbore: SACK 28C-30HZ AWB <125-17421> Ref Wellpath: SACK 28C-30HZ AWP										
String/Diameter	Start MD [ft]	End MD [ft]	Interval [ft]	Start TVD [ft]	End TVD [ft]	Start N/S [ft]	Start E/W [ft]	End N/S [ft]	End E/W [ft]	
13.5in Open Hole	25.00	1315.00	1290.00	25.00	1314.98	0.00	0.00	-0.42	-3.44	
9.625in Casing Surface	25.00	1315.00	1290.00	25.00	1314.98	0.00	0.00	-0.42	-3.44	
8.75in Open Hole	1315.00	8256.00	6941.00	1314.98	7874.22	-0.42	-3.44	596.49	551.26	
7in Casing Intermediate	25.00	8242.00	8217.00	25.00	7873.52	0.00	0.00	582.51	551.11	
6.125in Open Hole	8256.00	17421.00	9165.00	7874.22	7835.97	596.49	551.26	9757.62	544.00	

WELLPATH COMPOSITION - Ref Wellbore: SACK 28C-30HZ AWB <125-17421> Ref Wellpath: SACK 28C-30HZ AWP				
Start MD [ft]	End MD [ft]	Positional Uncertainty Model	Log Name/Comment	Wellbore
25.00	1258.00	Generic gyro - continuous (Standard)	MS GYRO SURVEYS <125-1258>	SACK 28C-30HZ AWB <125-17421>
1258.00	8197.00	NaviTrak (MAGCORR,IFR)	BHI NAVITRAK MWD+IFR 8 3/4" <1327-8197>	SACK 28C-30HZ AWB <125-17421>
8197.00	17368.00	NaviTrak (MAGCORR,IFR)	BHI NAVITRAK MWD+IFR 6 1/8" <8252-17368>	SACK 28C-30HZ AWB <125-17421>
17368.00	17421.00	Blind Drilling (std)	Projection to bit	SACK 28C-30HZ AWB <125-17421>

REFERENCE WELLPATH IDENTIFICATION			
Operator	KERR-MCGEE OIL & GAS ONSHORE LP (LAMBERT STATE PLANE COORD)	Slot	SLOT#10 SACK 28C-30HZ (825'FSL & 1900'FWL, SEC.31)
Area	COLORADO	Well	SACK 28C-30HZ
Field	WELD COUNTY (KERR MCGEE)	Wellbore	SACK 28C-30HZ AWB <125-17421>
Facility	SEC.31-T1N-R67W		

WELLPATH COMMENTS					
MD [ft]	Inclination [°]	Azimuth [°]	TVD [ft]	Comment	
25.00	0.000	277.130	25.00	TIE ON	
125.00	0.360	277.130	125.00	BEGIN GYRO SURVEYS	
1258.00	0.200	289.920	1257.98	TIE ONTO GYRO SURVEYS	
1327.00	0.250	211.160	1326.98	BEGIN BHI MWD+IFR SURVEYS	
8242.00	86.575	0.688	7873.52	7" CASING POINT	
17368.00	89.590	0.310	7835.59	LAST BHI MWD+IFR SURVEY	
17421.00	89.590	0.310	7835.97	PROJECTION TO BIT	