



Scale 1:240 (5"=100') Imperial  
Measured Depth Log

Well Name: Buffalo 36C-15HZ  
API: 05123364600000  
Location: Weld County, CO.  
License Number: 2063244  
Spud Date: 12/24/2014  
Surface Coordinates: 624 FNL 2480 FWL

Region: DJ Basin  
Drilling Completed: 12/31/2014

Bottom Hole 460 FSL 2490 FWL  
Coordinates:  
Ground Elevation (ft): 5125' K.B. Elevation (ft): 5150'  
Logged Interval (ft): 7300' To: 12479' Total Depth (ft): 12479'  
Formation: Codell  
Type of Drilling Fluid: Water Base Mud

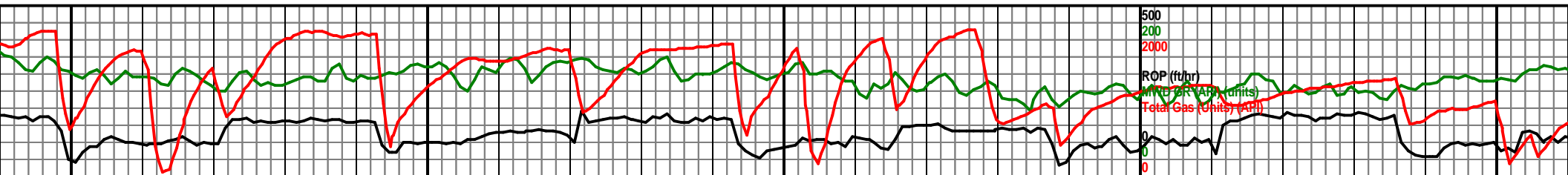
Printed by HORIZONTAL.LOG from WellSight Systems 1-800-447-1534 [www.WellSight.com](http://www.WellSight.com)

#### OPERATOR

Company: Anadarko Petroleum Corporation  
Address: 1099 18th Street, Suite 1800  
Denver, CO 80202-1918

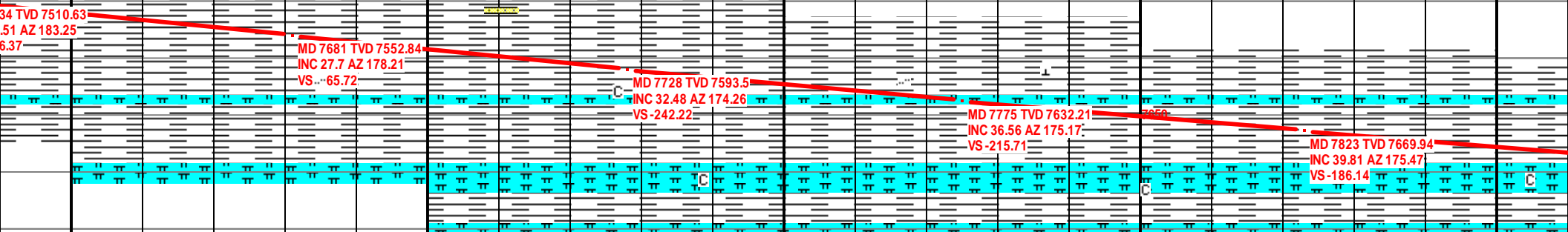






7650 7700 7750 7800 7850

Niobrara B Chalk Top @ 7773' MD, 7631' TVD



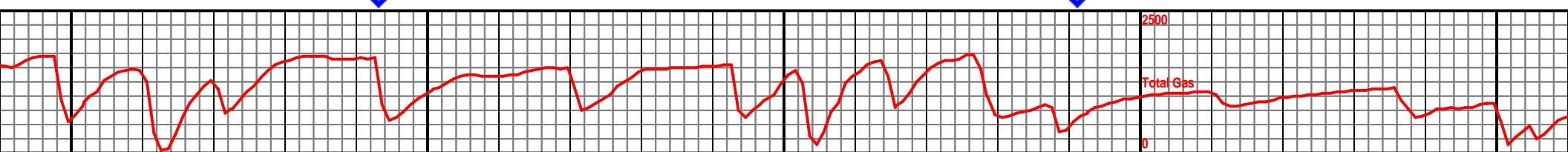
ltgy-gy, wh bnd chk, extr calc, occ  
shly, frm, sbplty, no sfl, slw str wh  
gy-drkgy, plty-sbplty, slty, sft, v  
calc. Mrst 5%: ltgy-mdgy, v calc, abnd intbd  
biocl, frm, sbplty, no sfl, slw str wh cut. Tr Bent.

Chalk 65%: ltgy-gy, wh bnd chk, extr calc, occ  
intbd biocl, shly, frm, sbplty, no sfl, mod str wh  
cut. SH 30%: gy-drkgy, plty-sbplty, slty, sft, v  
calc. Mrst 5%: ltgy-mdgy, v calc, abnd intbd  
biocl, frm, sbplty, no sfl, slw str wh cut. Tr Bent.

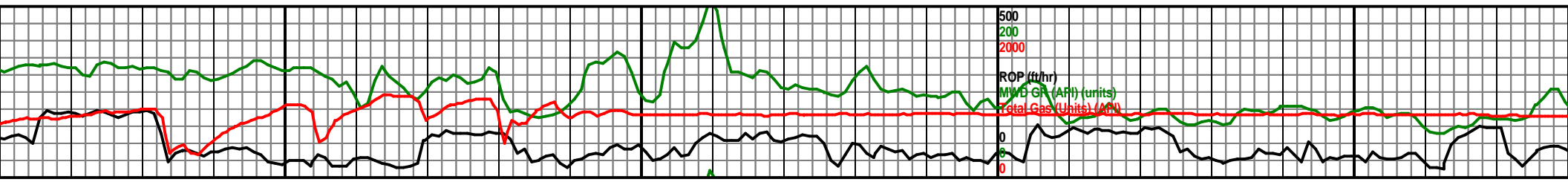
Chalk 90%: ltgy-gy, wh bnd chk, extr calc, occ  
intbd biocl, shly, frm, sbplty, no sfl, mod str wh  
cut. SH 10%: gy-drkgy, plty-sbplty, slty, sft, v  
calc.

Chalk 85%: ltgy-gy, wh bnd chk, extr calc, occ  
intbd biocl, shly, frm, sbplty, no sfl, slw str wh  
cut. SH 10%: gy-drkgy, plty-sbplty, slty, sft, v  
calc. Mrst 5%: ltgy-mdgy, v calc, tr intbd biocl,  
frm, sbplty, no sfl, slw str wh cut.

SH 80%: gy-drkgy, plty-sbplty, slty, sft  
Mrst 20%: ltgy-mdgy, v calc, abnd intbd  
biocl, frm, sbplty, no sfl, slw str wh cut. Tr Bent.







7900

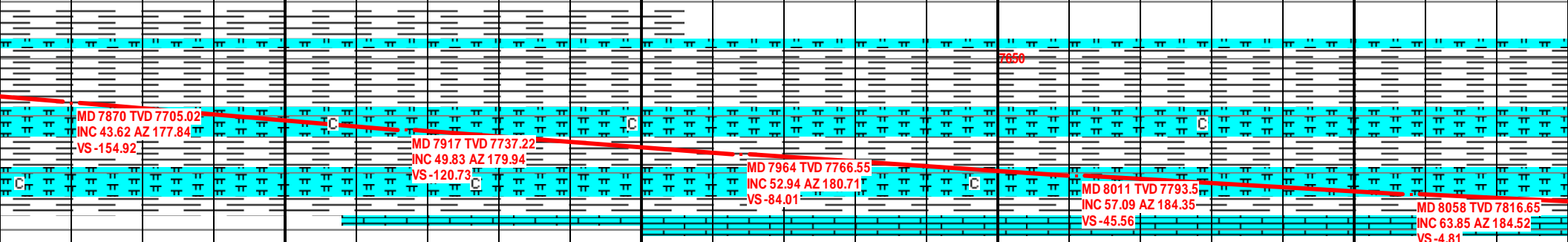
7950

8000

8050

# Niobrara C Chalk Top @ 7910' MD, 7733' TVD

7300 TVD



t, v calc.  
bd biocl,  
chalk. Tr pyr.

SH 95%: gy-drkgy, pty-sbply, slty, sft, v calc.  
Mrst 5%: ltgy-mdgy, v calc, abnd intbd biocl, frm,  
sbply, no sfl, slw str wh cut. Tr Chalk. Tr pyr.

Chalk 75%: ltgy-gy, wh bnd chk, extr calc, occ  
intbd biocl, shly, frm, sbply, no sfl, mod str wh  
cut. SH 15%: gy-drkgy, pty-sbply, slty, sft, v  
calc. Mrst 10%: ltgy-mdgy, v calc, occ intbd  
biocl, frm, sbply, no sfl, slw str wh cut.

Chalk 85%: ltgy-gy, extr calc, tr intbd biocl, shly,  
frm, sbply, no sfl, slw str wh cut. SH 10%:  
gy-drkgy, pty-sbply, slty, sft, v calc. Mrst 5%:  
ltgy-mdgy, v calc, tr intbd biocl, frm, sbply, no  
sfl, slw str wh cut.

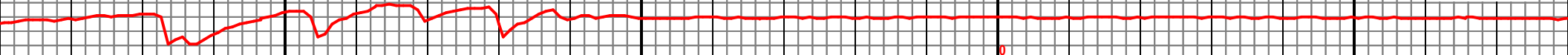
Chalk 75%: ltgy-gy, extr calc, tr intbd biocl, shly,  
frm, sbply, no sfl, slw str wh cut. Mrst 15%:  
ltgy-mdgy, v calc, tr intbd biocl, frm, sbply, no  
sfl, slw str wh cut. SH 10%: gy-drkgy, pty-sbply,  
slty, sft, v calc.

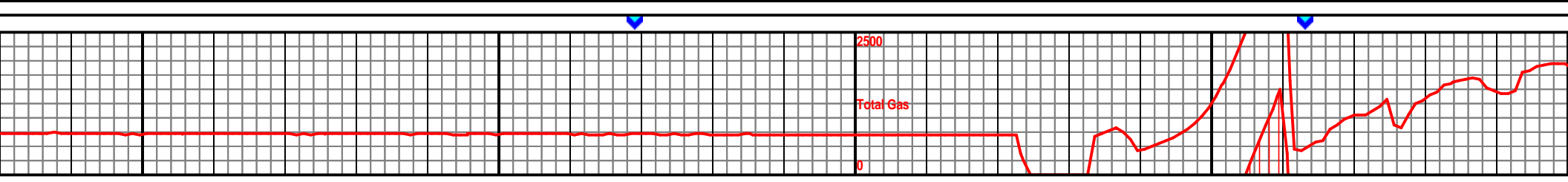
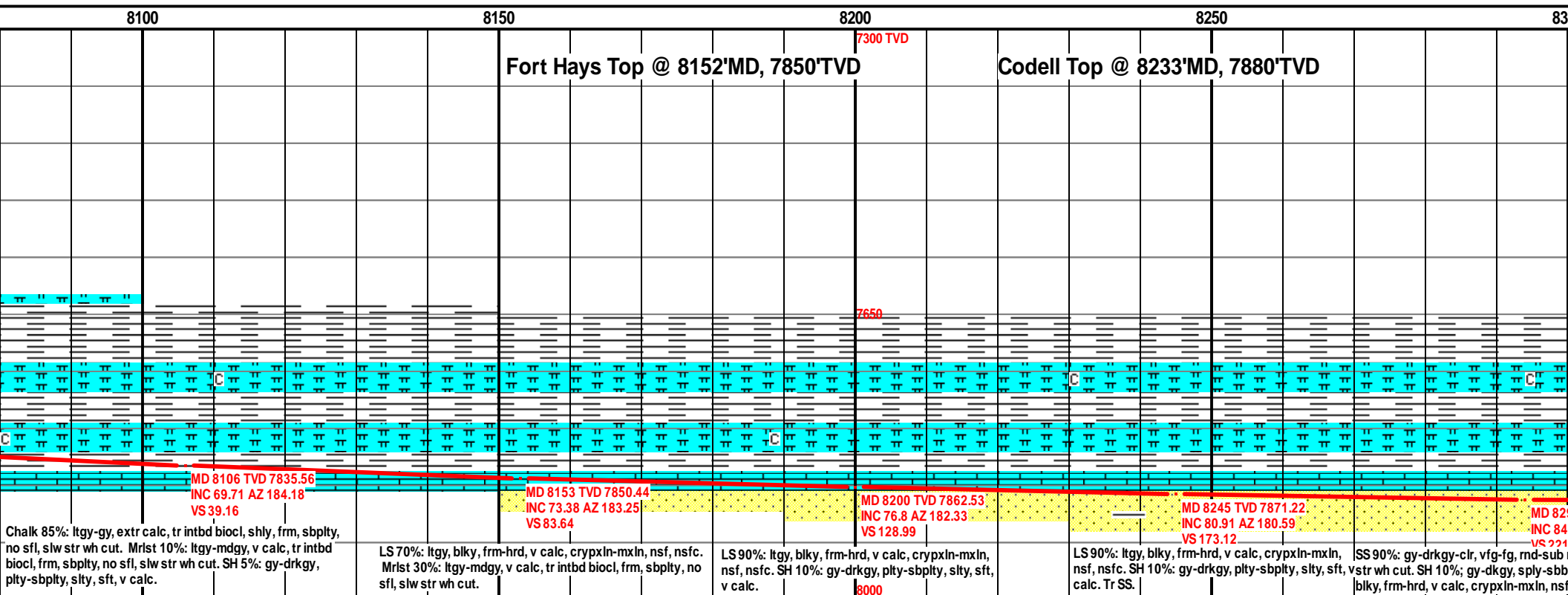
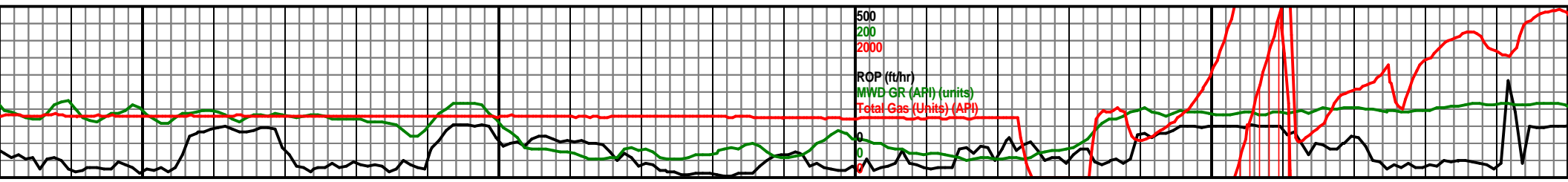


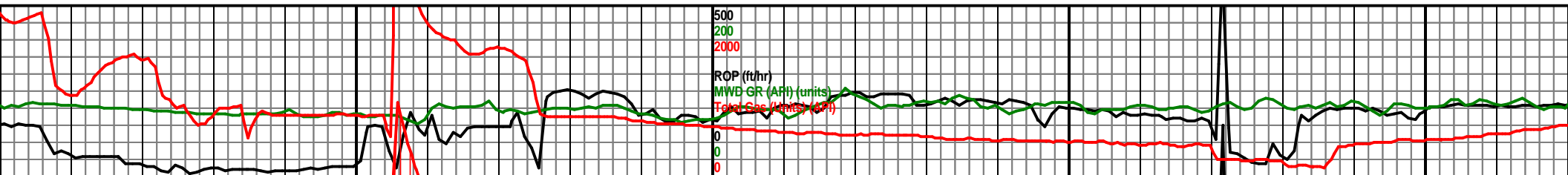
2500

Total Gas

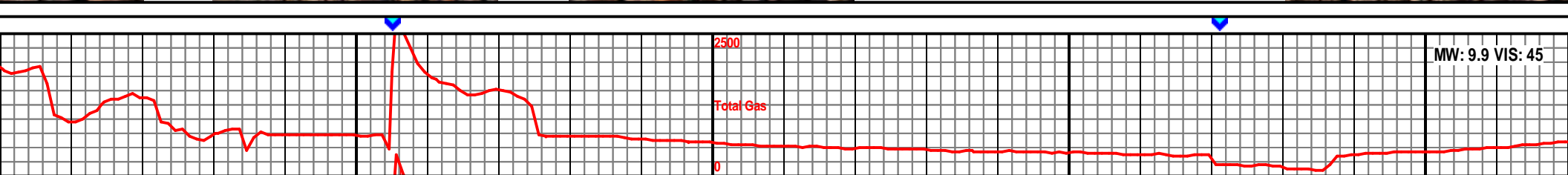
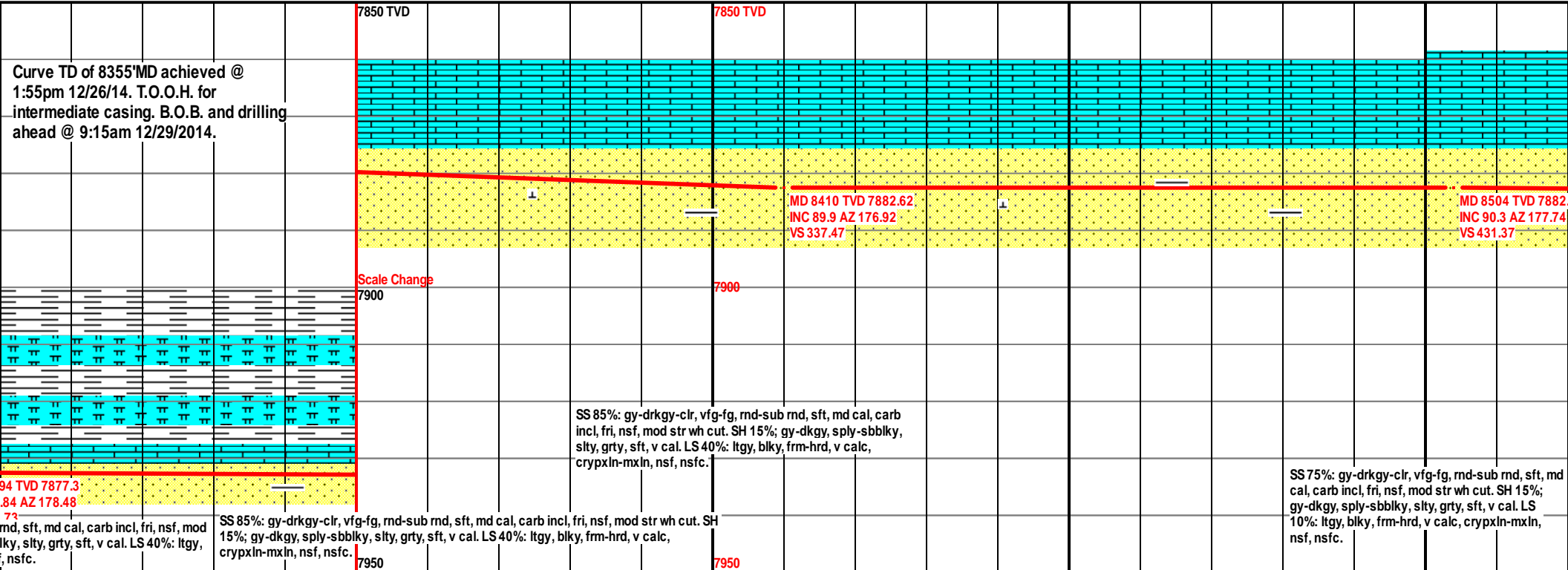
NOV Gas Error

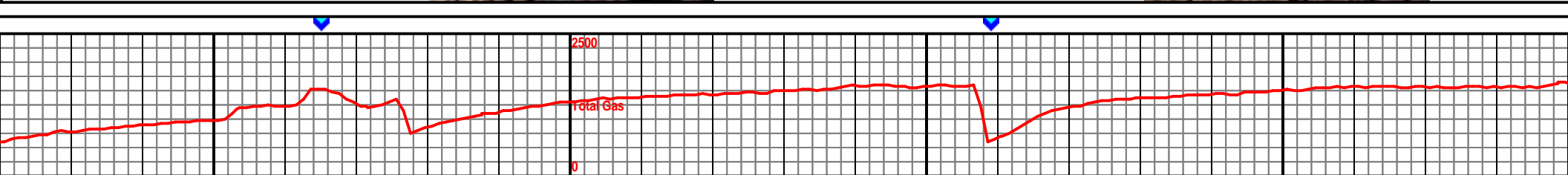
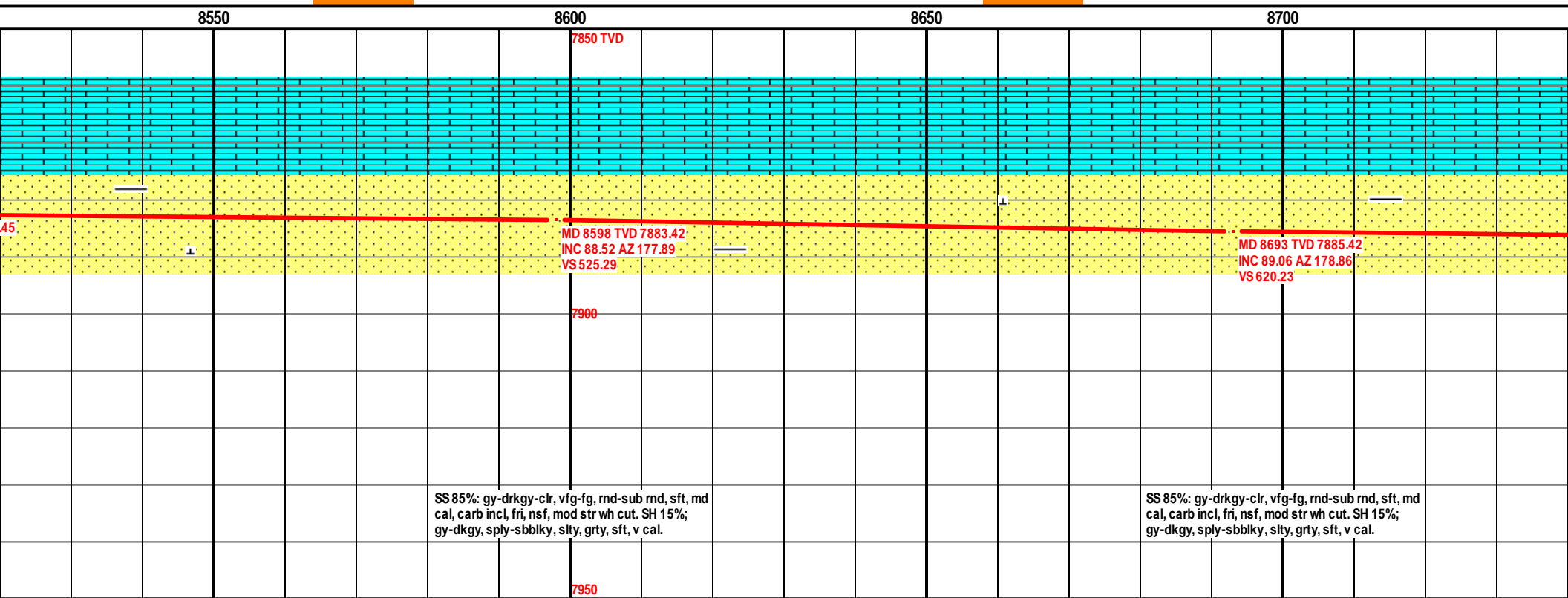
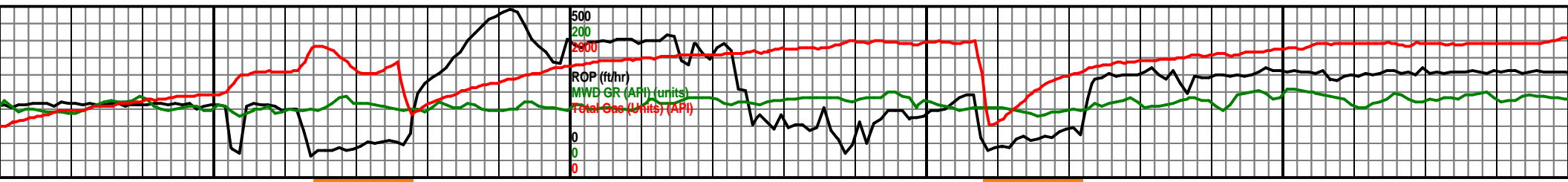




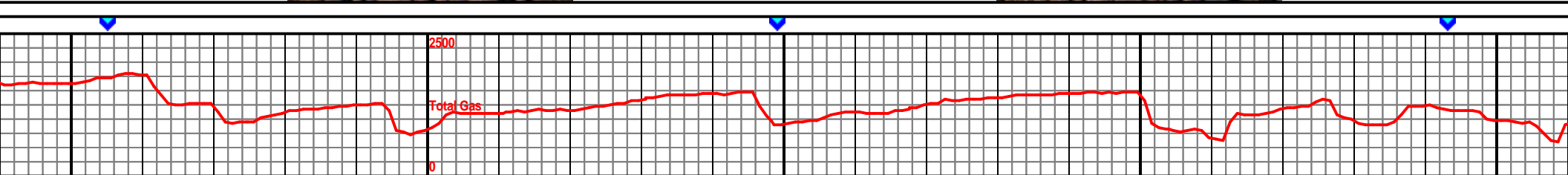
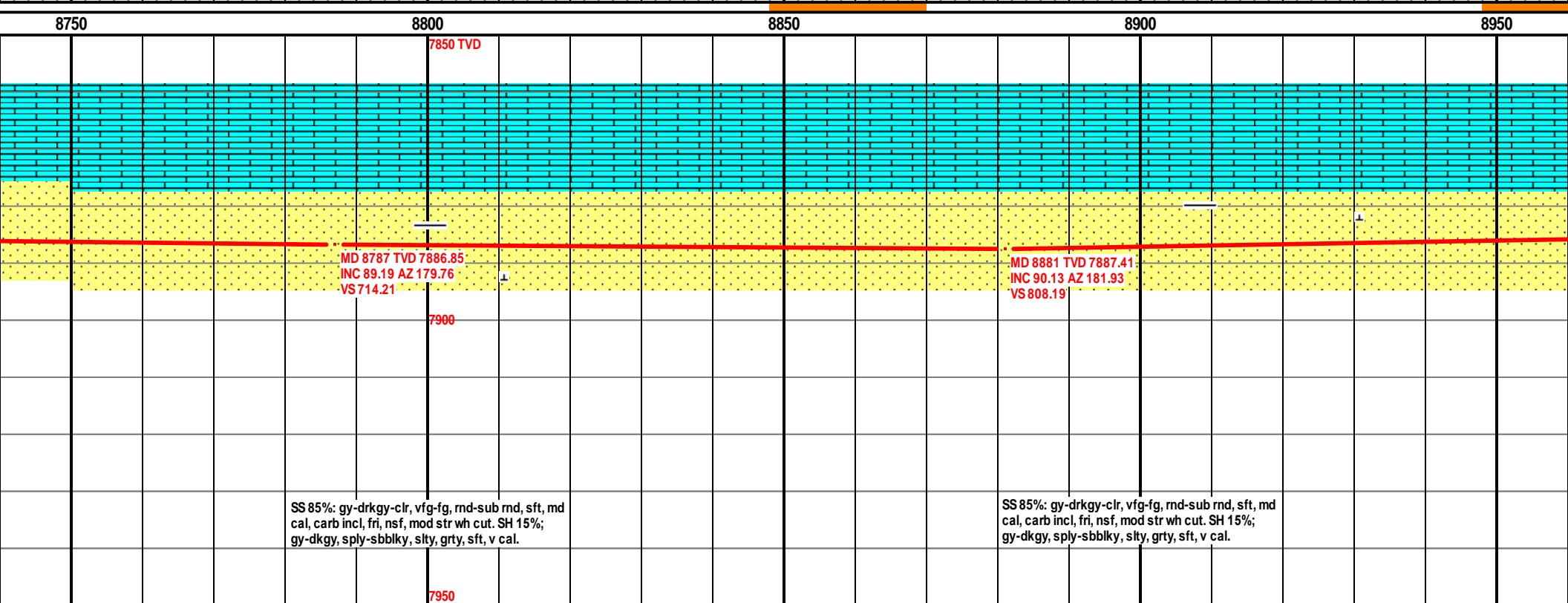
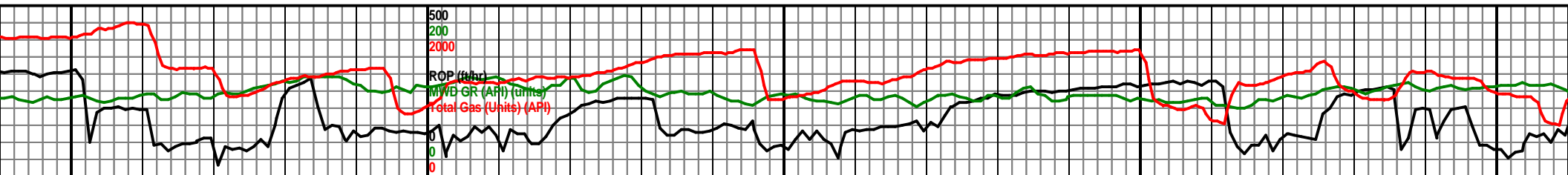


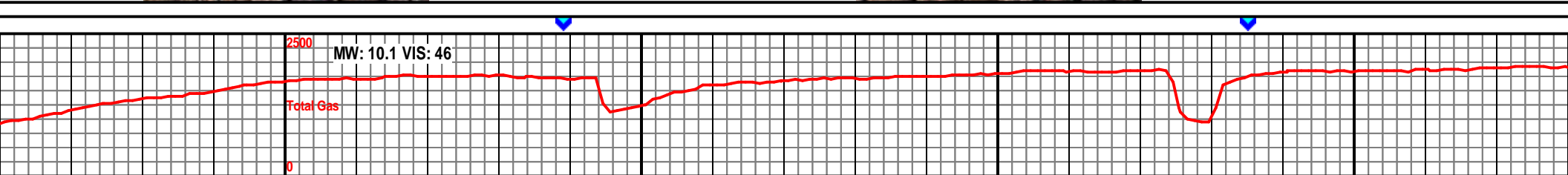
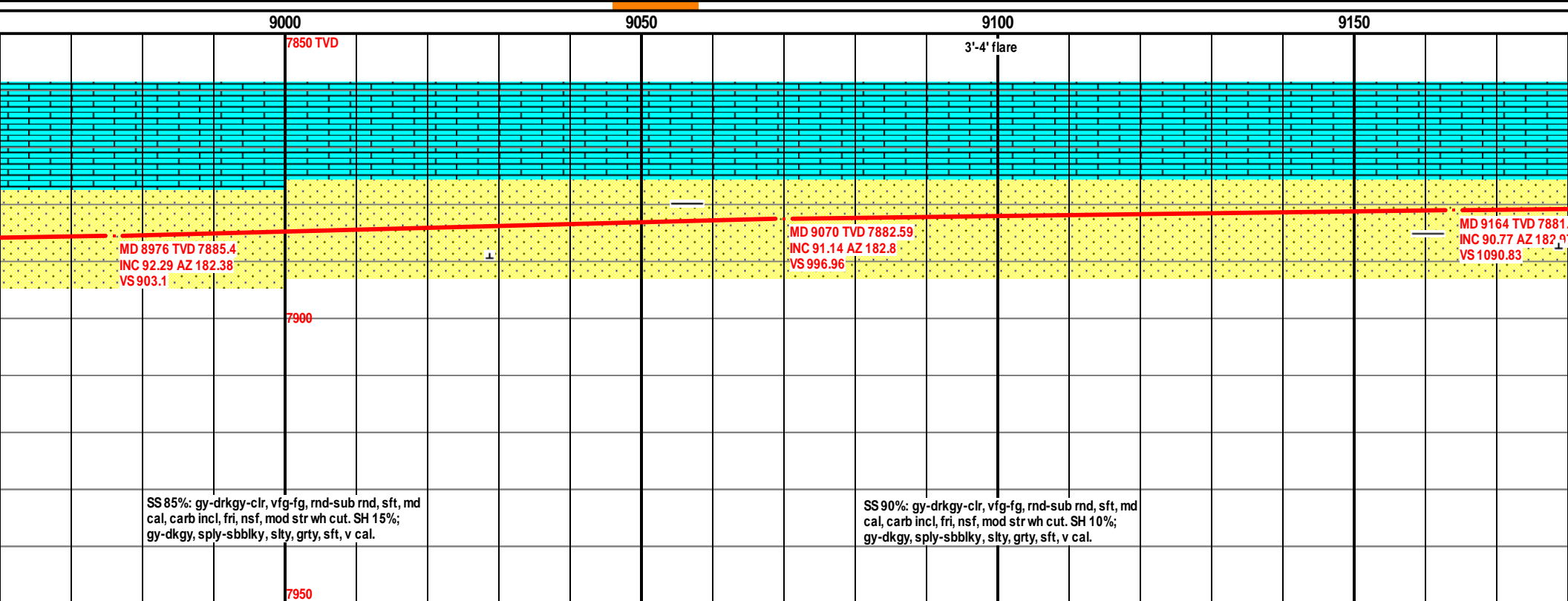
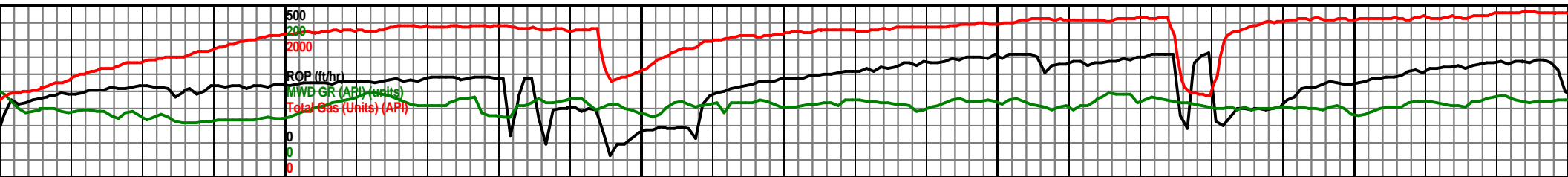
00 8350 8400 8450 8500



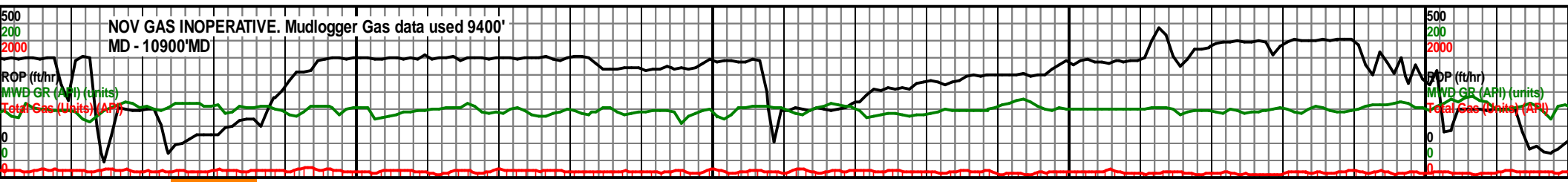






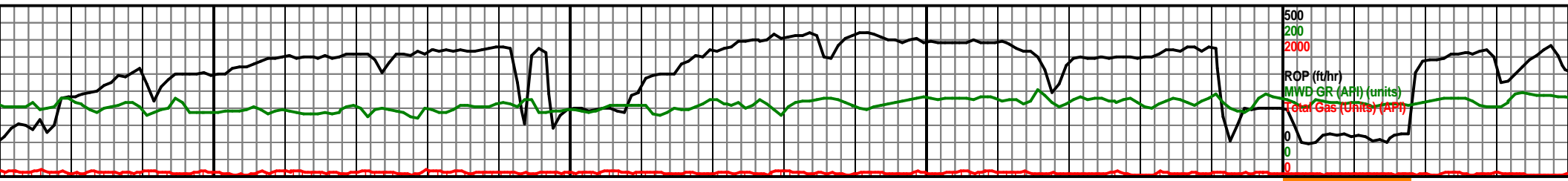




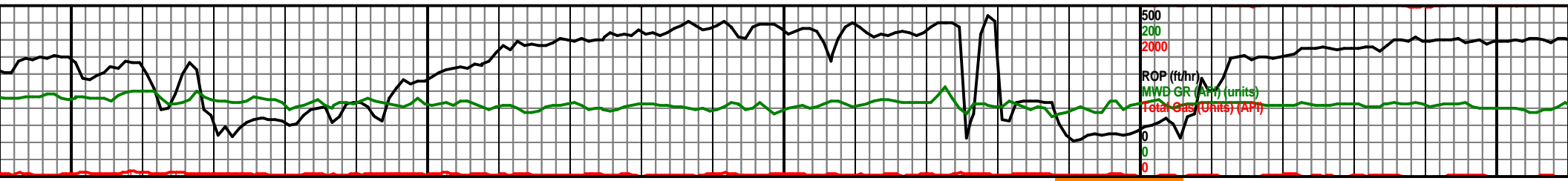


9450										9500										9550										9600																													
7850 TVD										3'-4' flare										4'-5' flare										4:00am 12/30/2014 Depth @ 9505' MD										4'-5' flare										7850 TVD									
																																																		</									

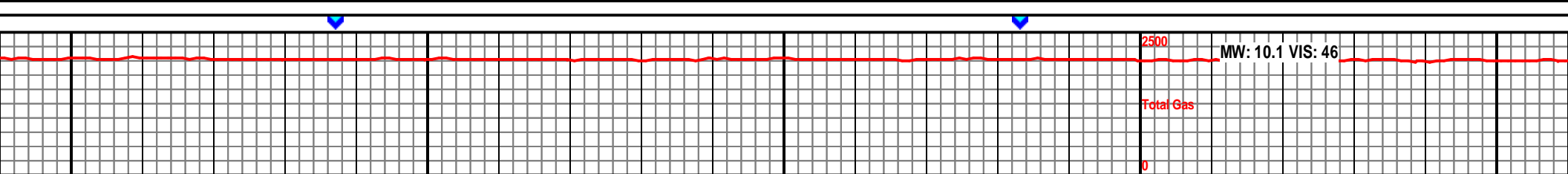




9650										9700										9750										9800									
																														7850 TVD									



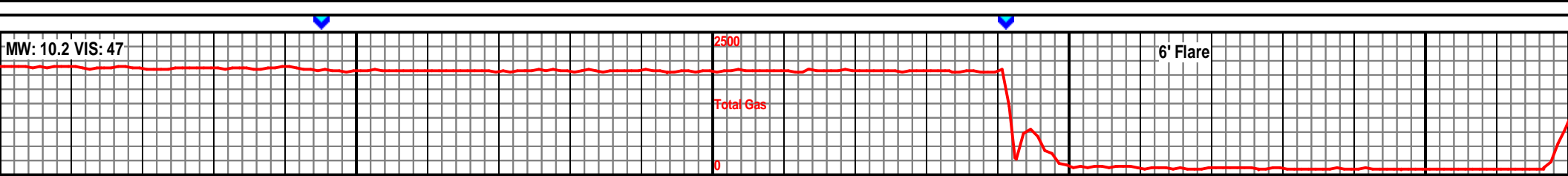
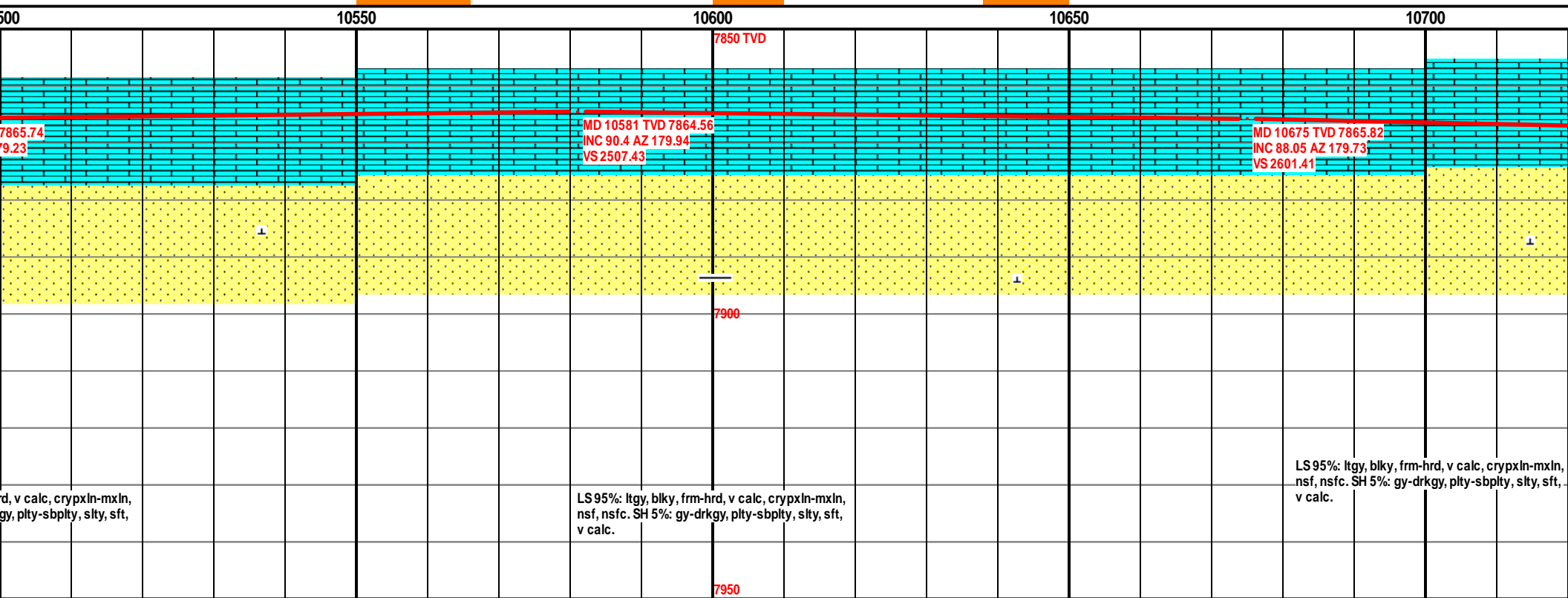
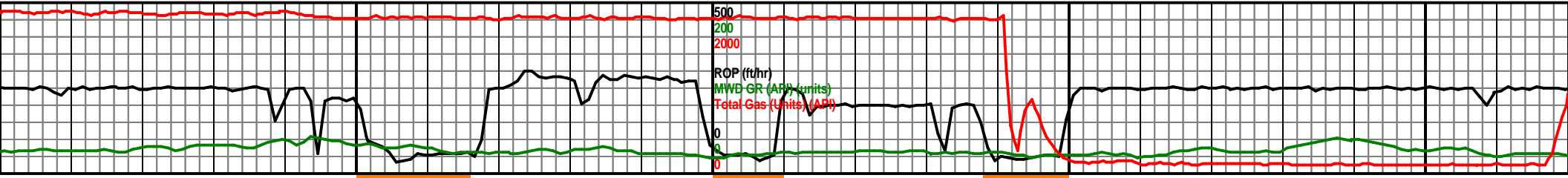
9850						9900						9950						10000						10050					
75.34												MD 9920 TVD 7875.25												MD 10015 TVD 7875.34					
6												INC 89.5 AZ 179.77												INC 90.4 AZ 179.08					
												VS 1846.58												VS 1941.58					

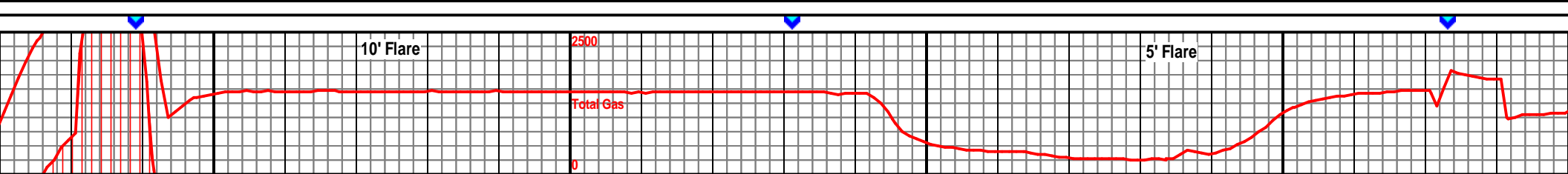
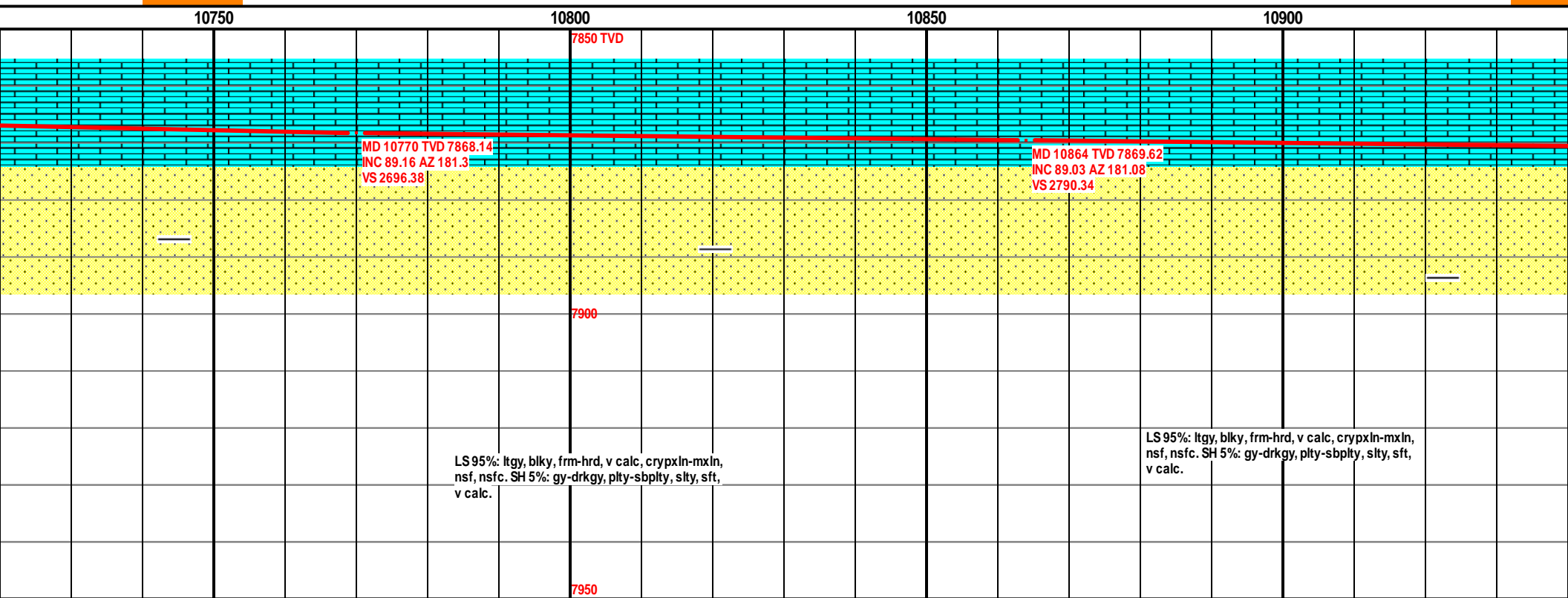
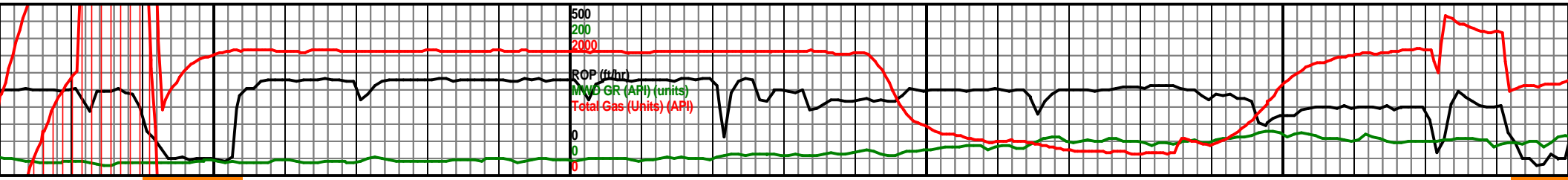


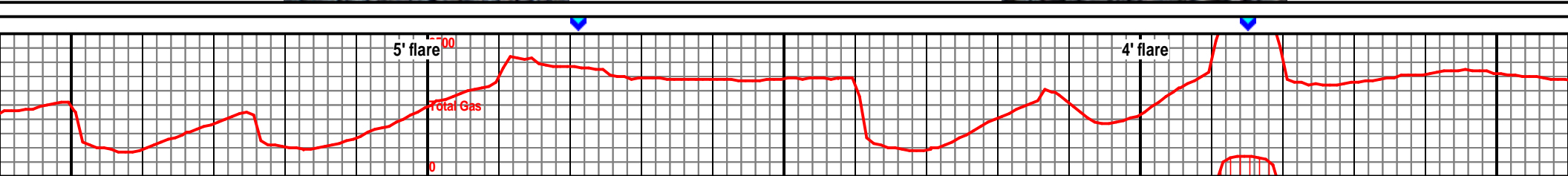
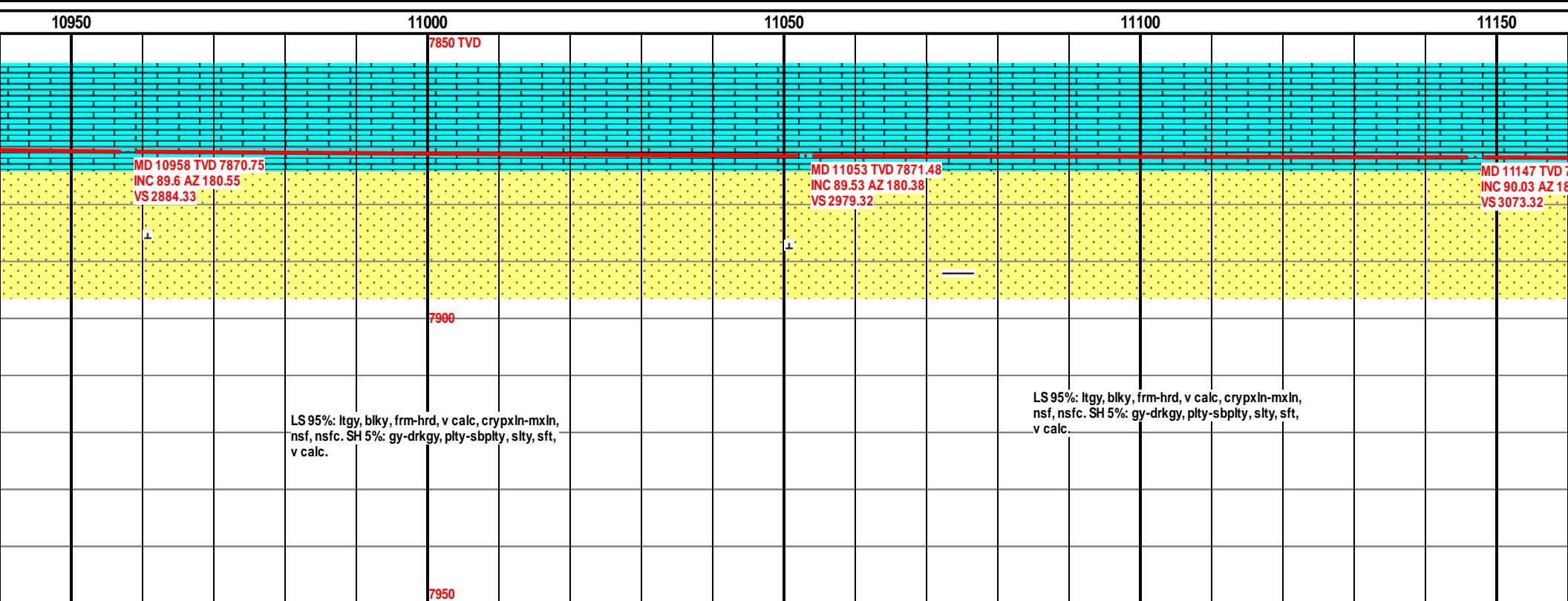
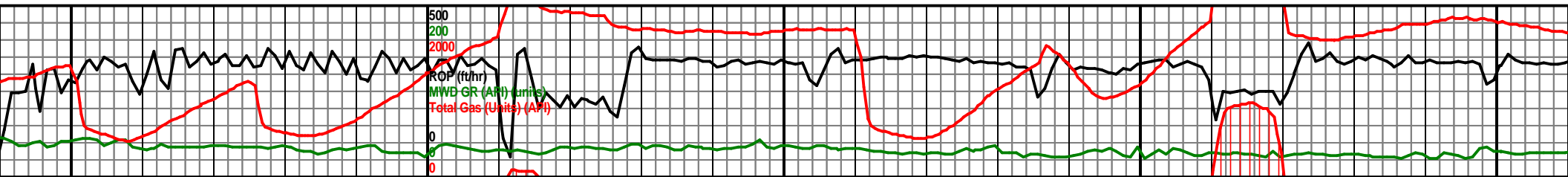


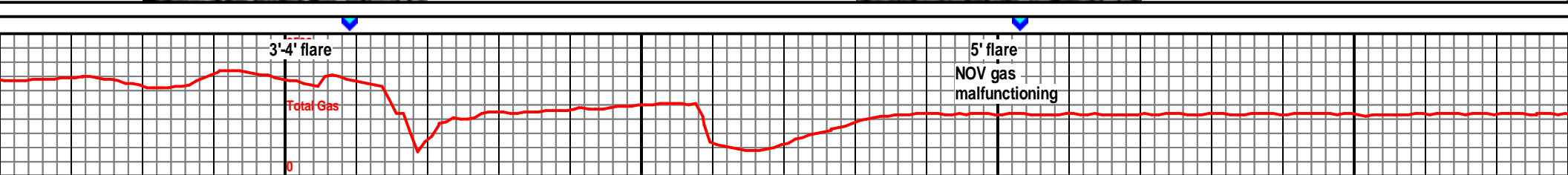
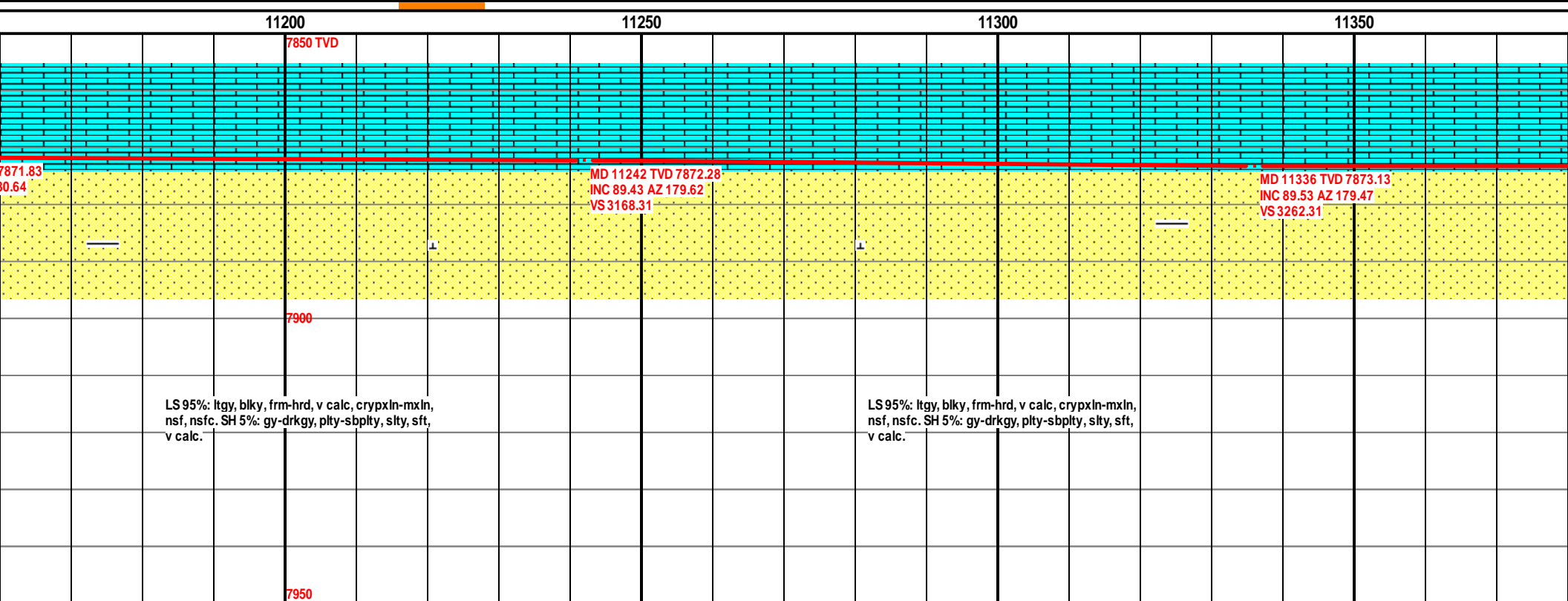
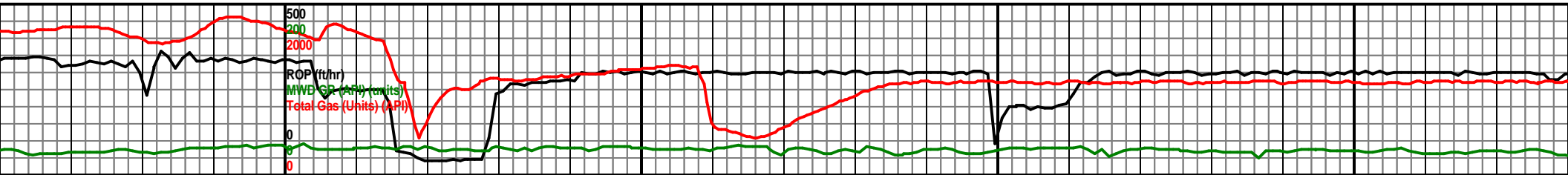




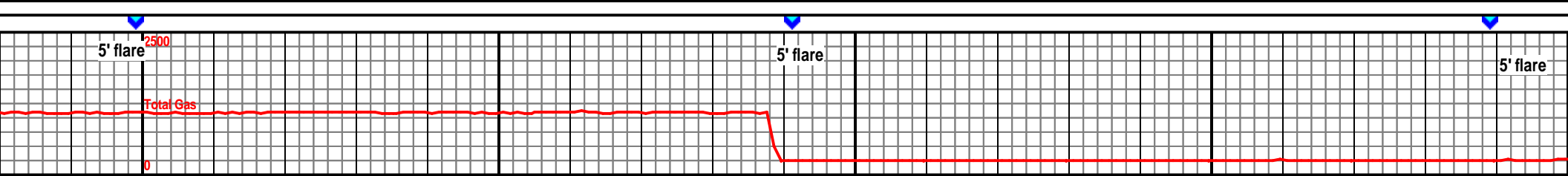
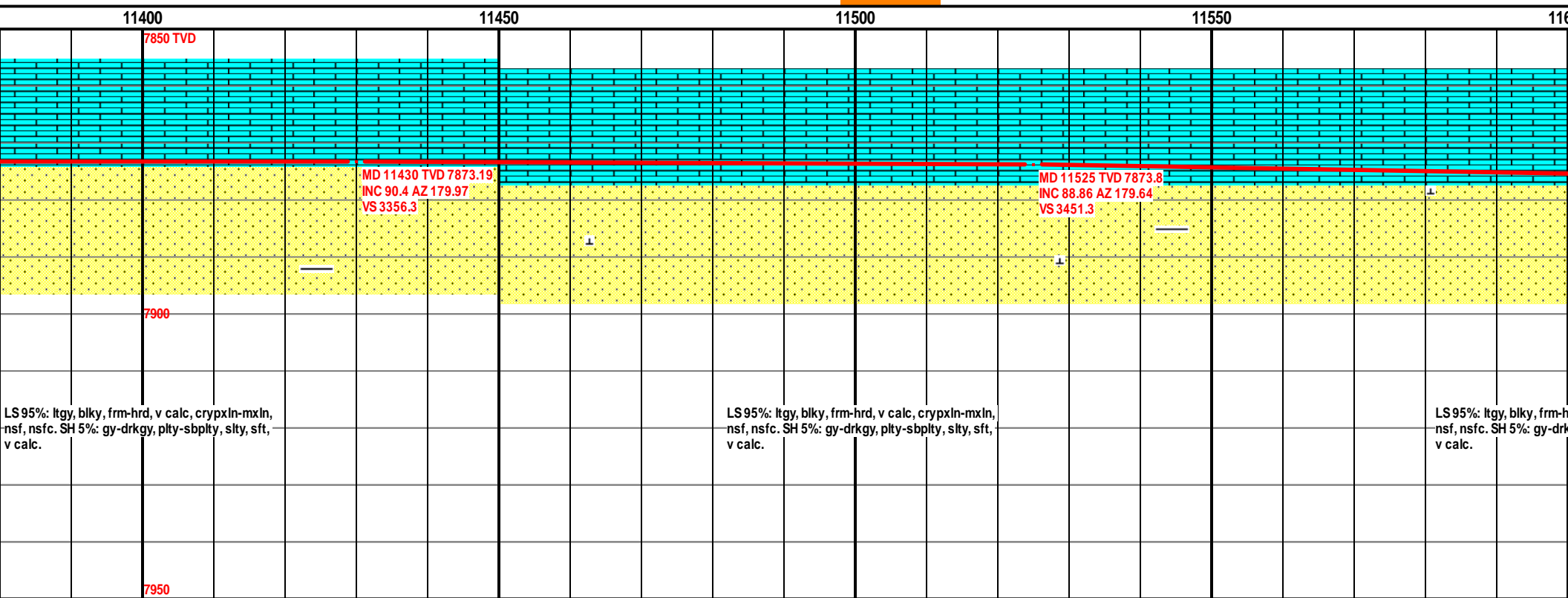
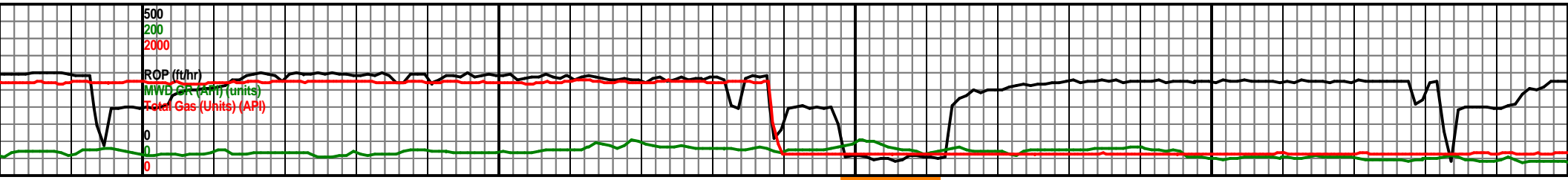


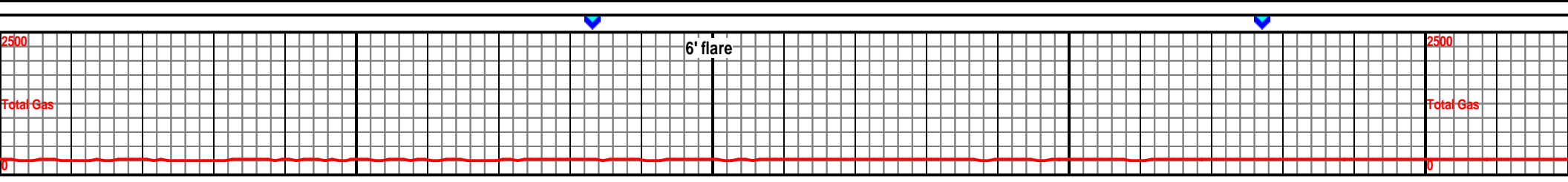
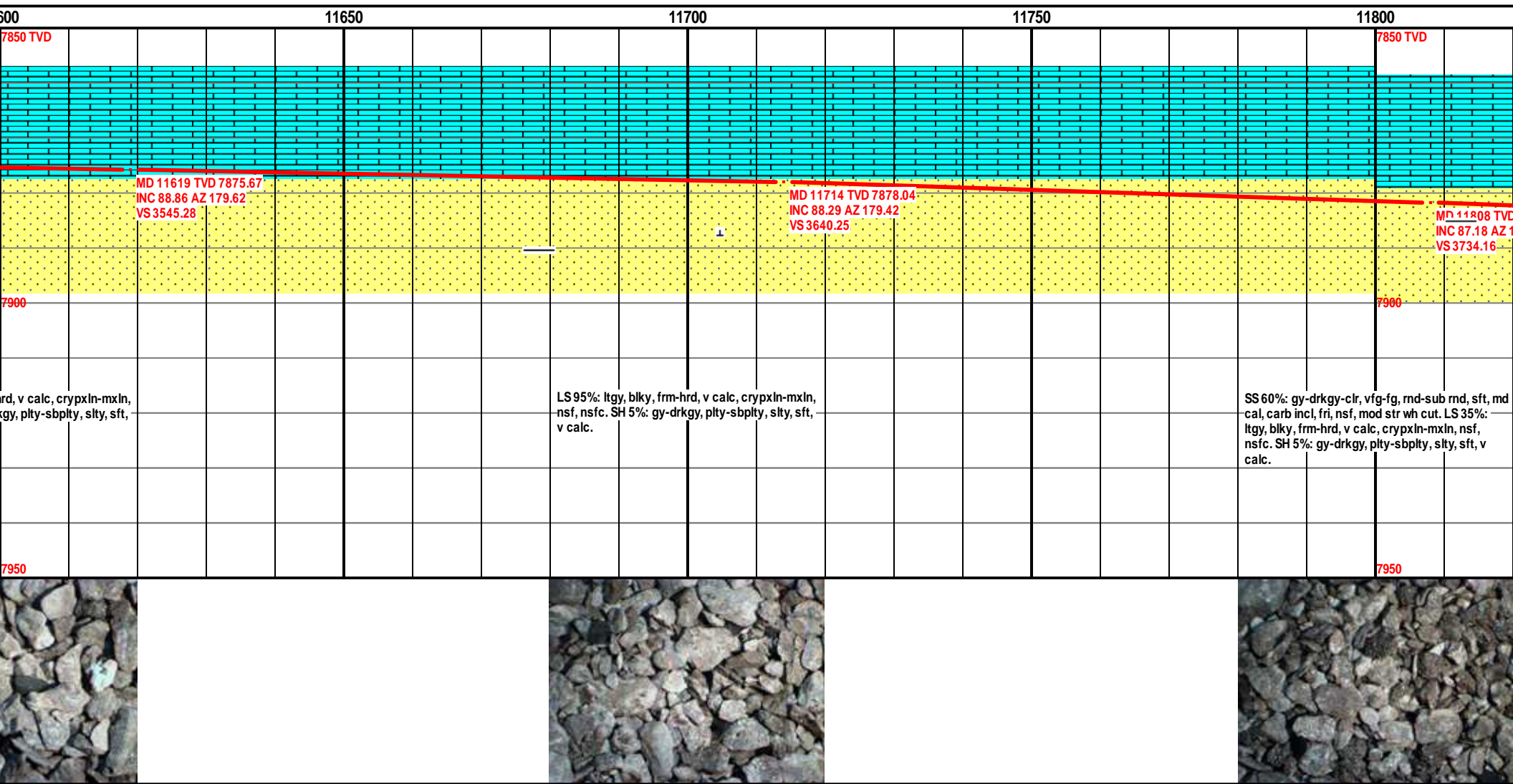
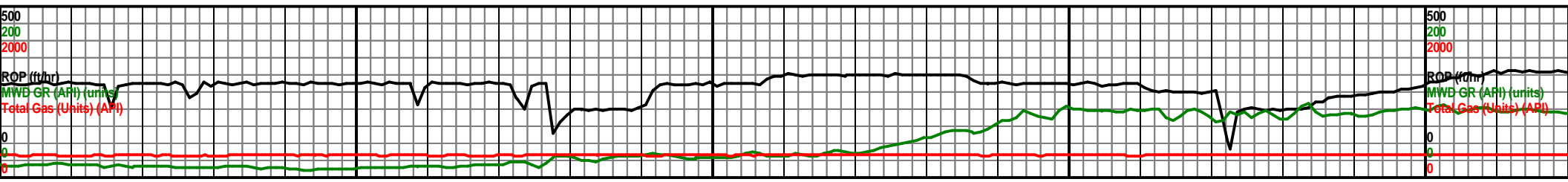


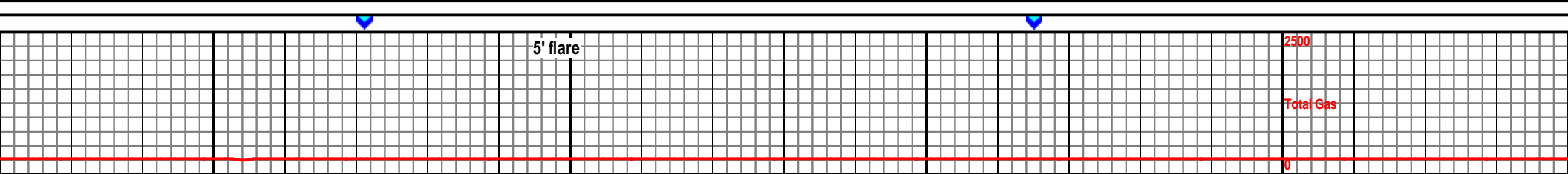
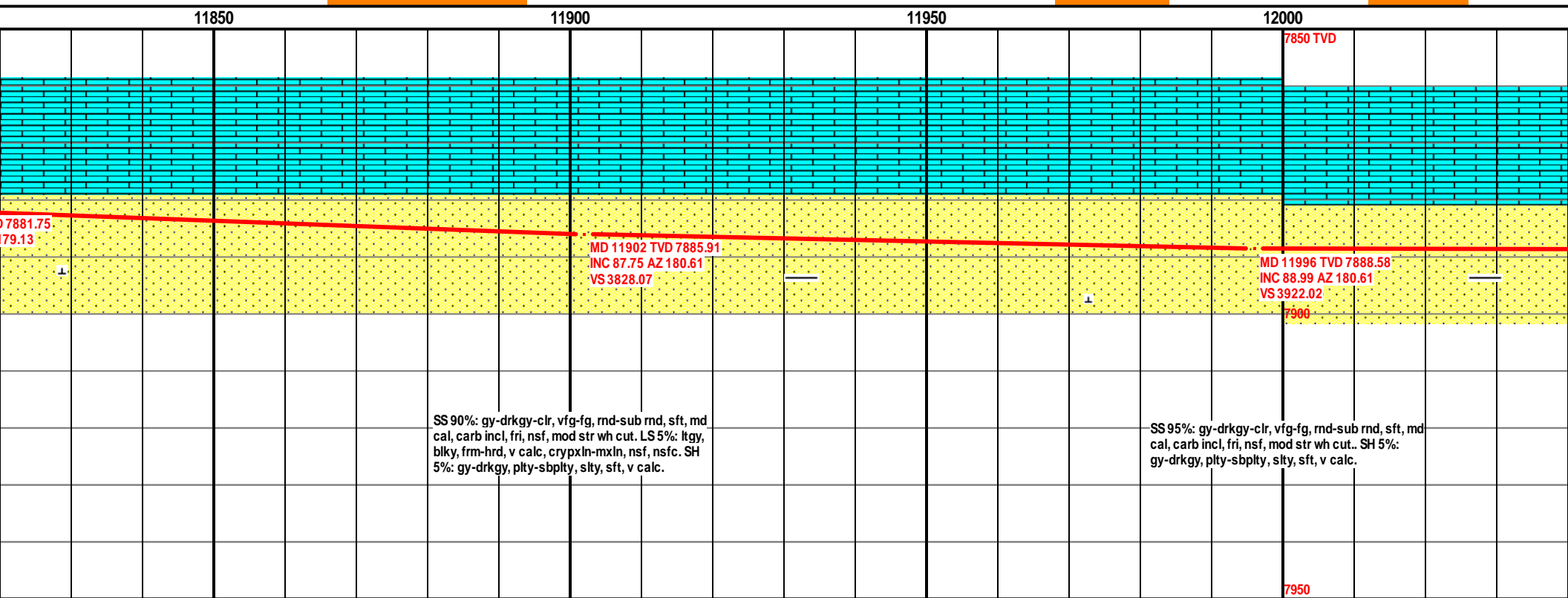
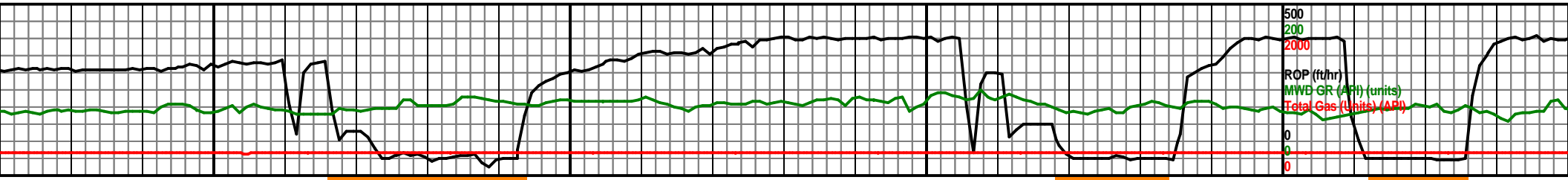


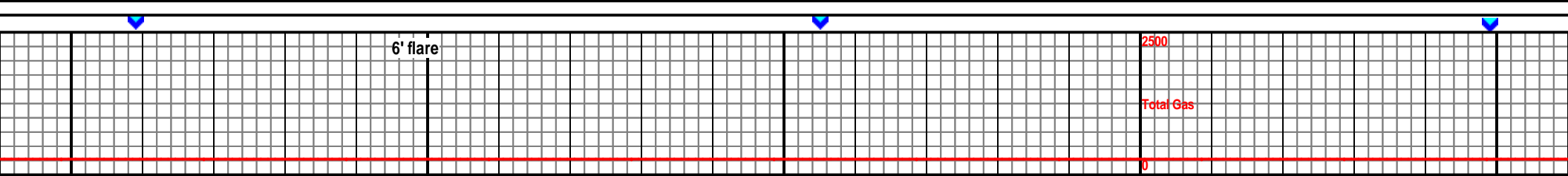
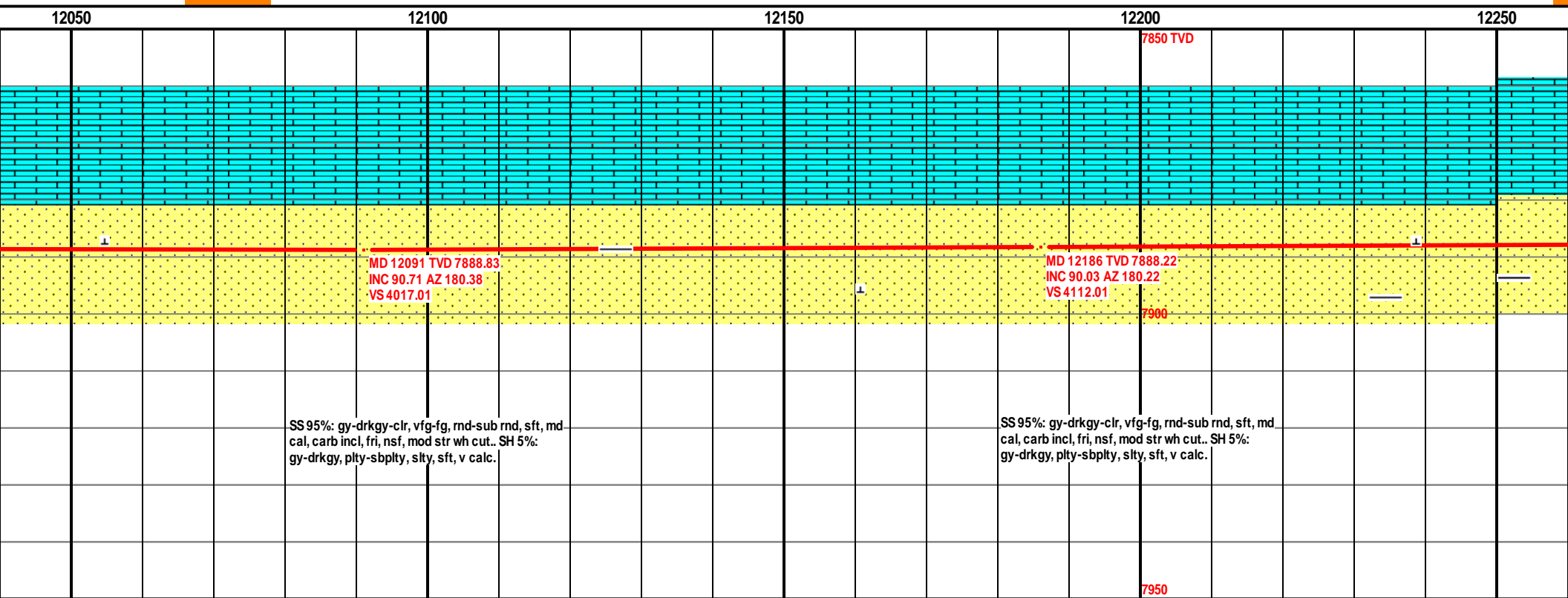
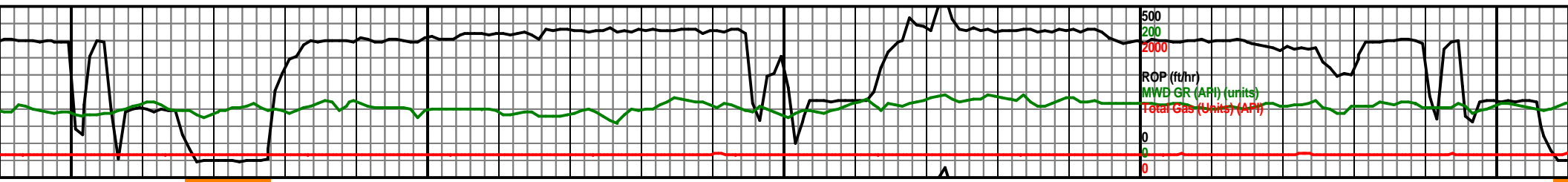


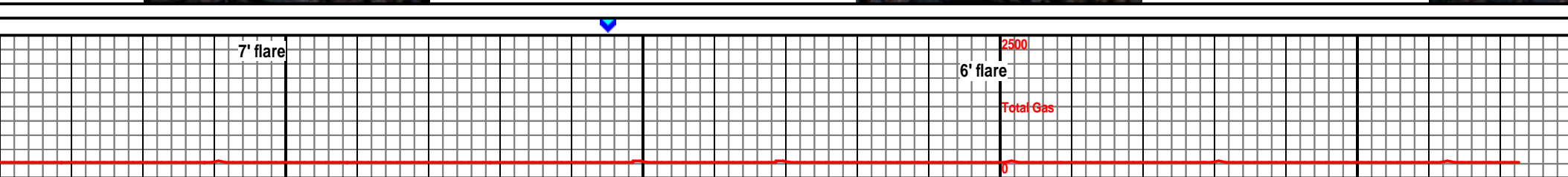
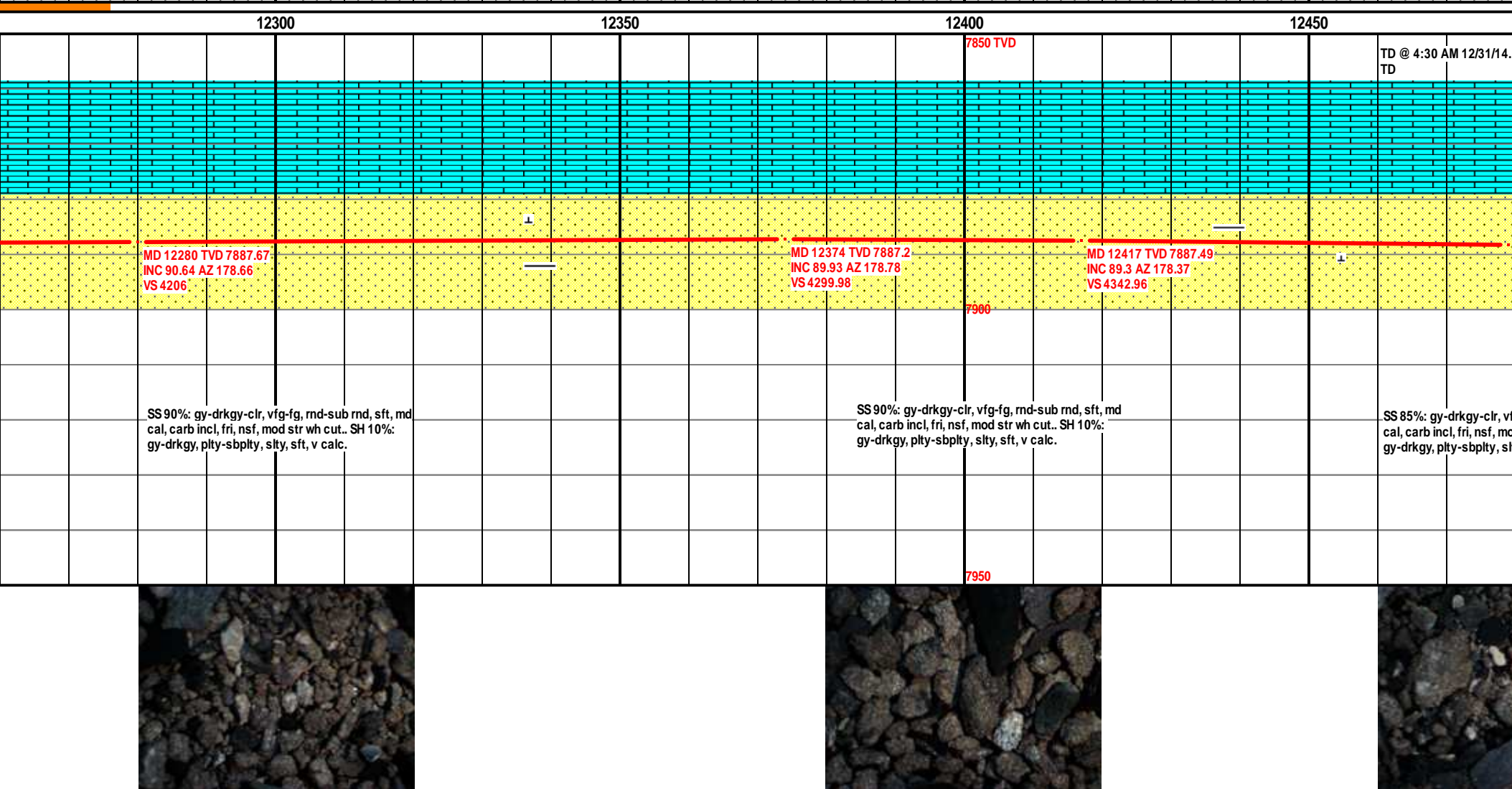
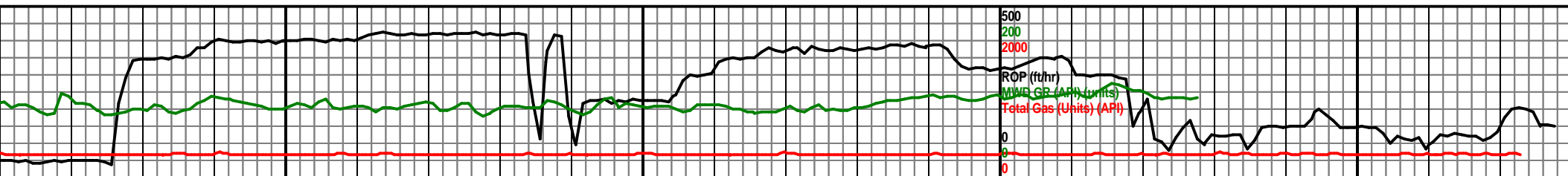




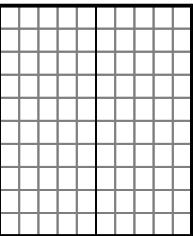












123

2 man crew released @

MD 12479 TVD 7888.29  
INC 89.3 AZ 178.37  
VS 4404.96

g-fg, rnd-sub rnd, sft, md.  
d str wh cut.. SH 15%:  
y, sft, v calc.

