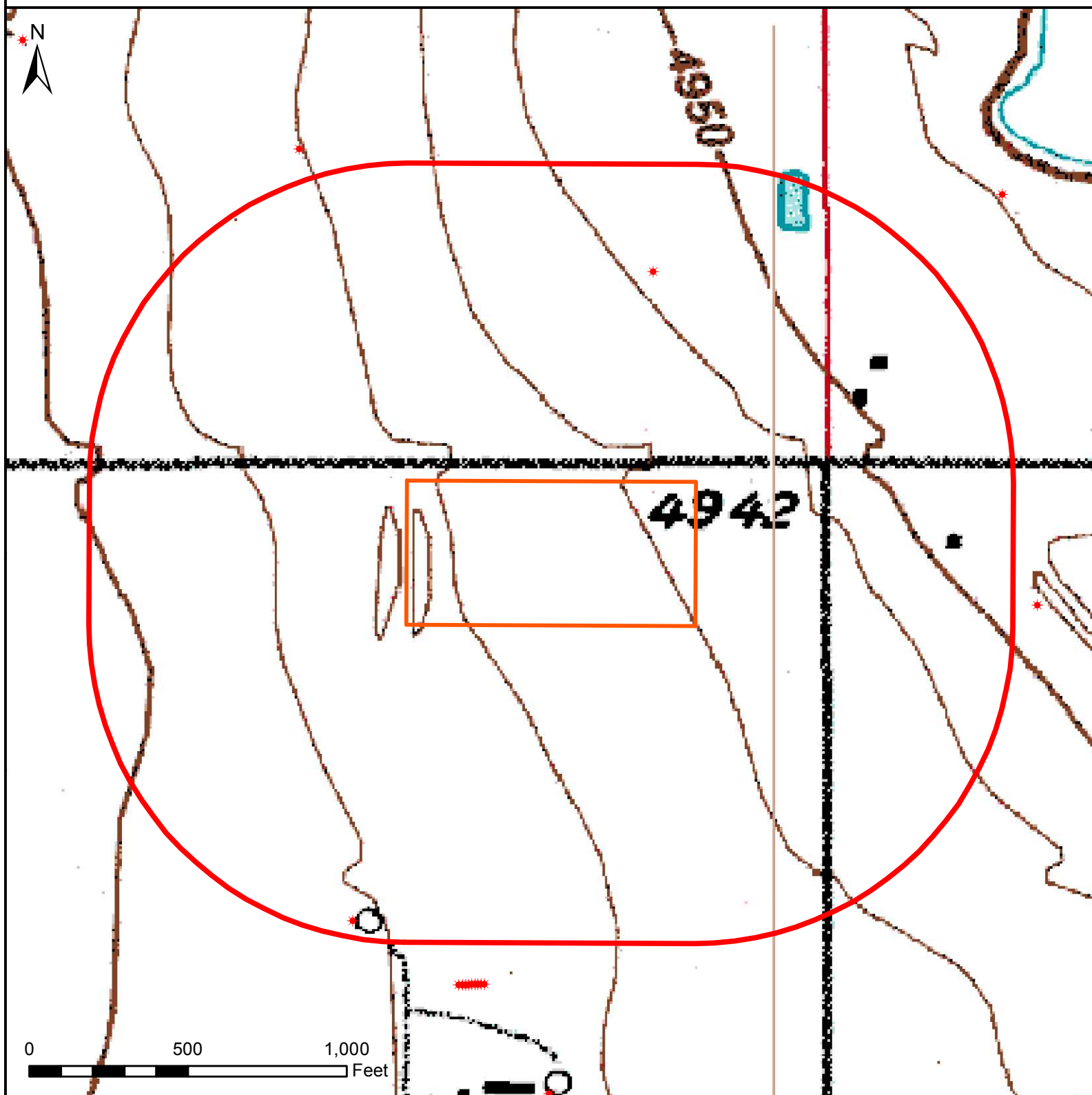


HYDROLOGY MAP FEHRN 16N-32HZ



Nearest Surface Water Feature

Pond: 840' NNE, Elev: 4952'
Loc Elev: 4926'

Legend

- 1000' buffer
- Well pad (proposed)
- * Existing oil/gas well (COGCC)

All measurements are made from
edge of disturbed area.



Date created: 1/28/2015
Created by: APC Regulatory GIS
Scale: 1:5,000
Projection: NAD83 UTM 13N