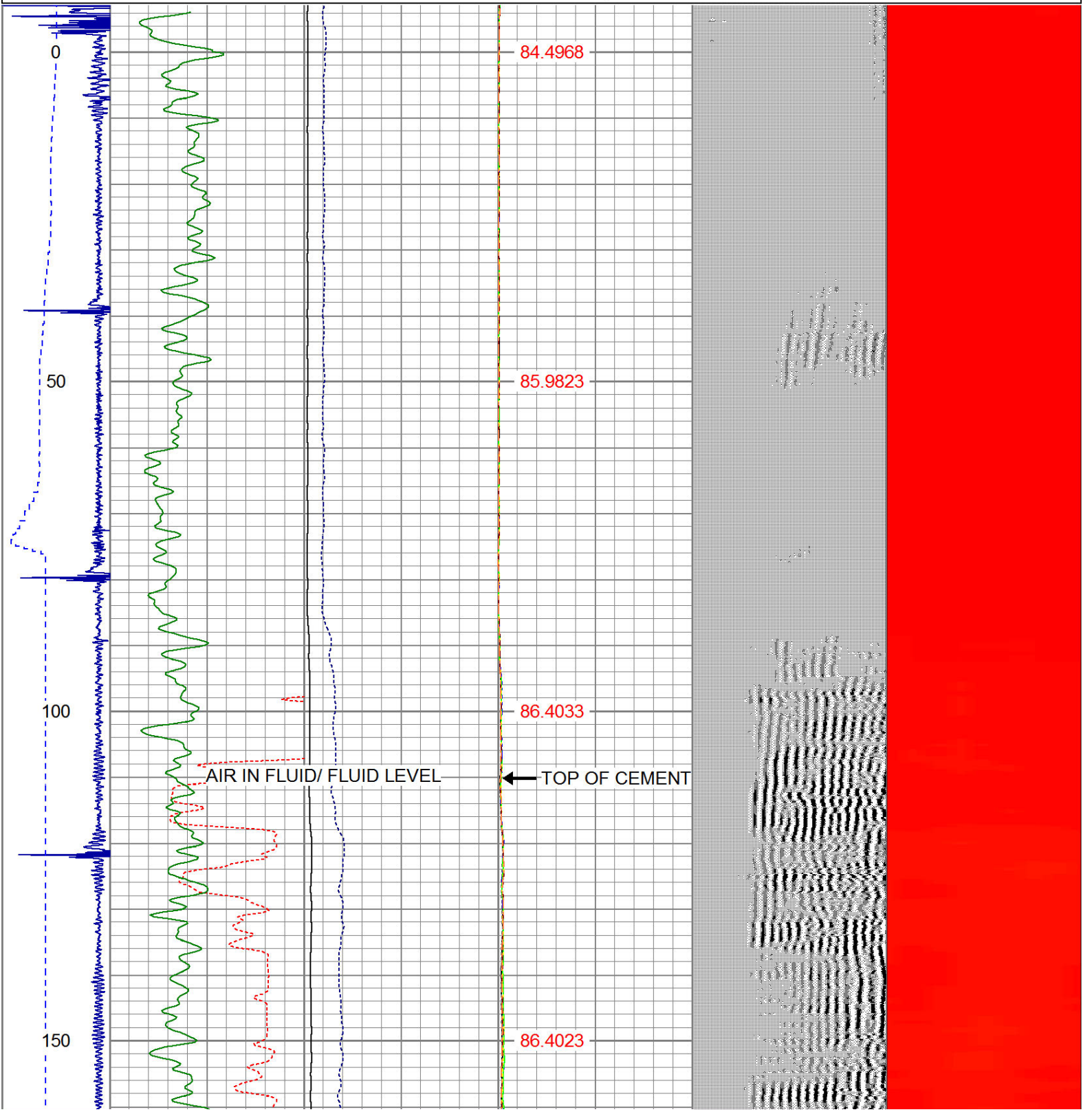
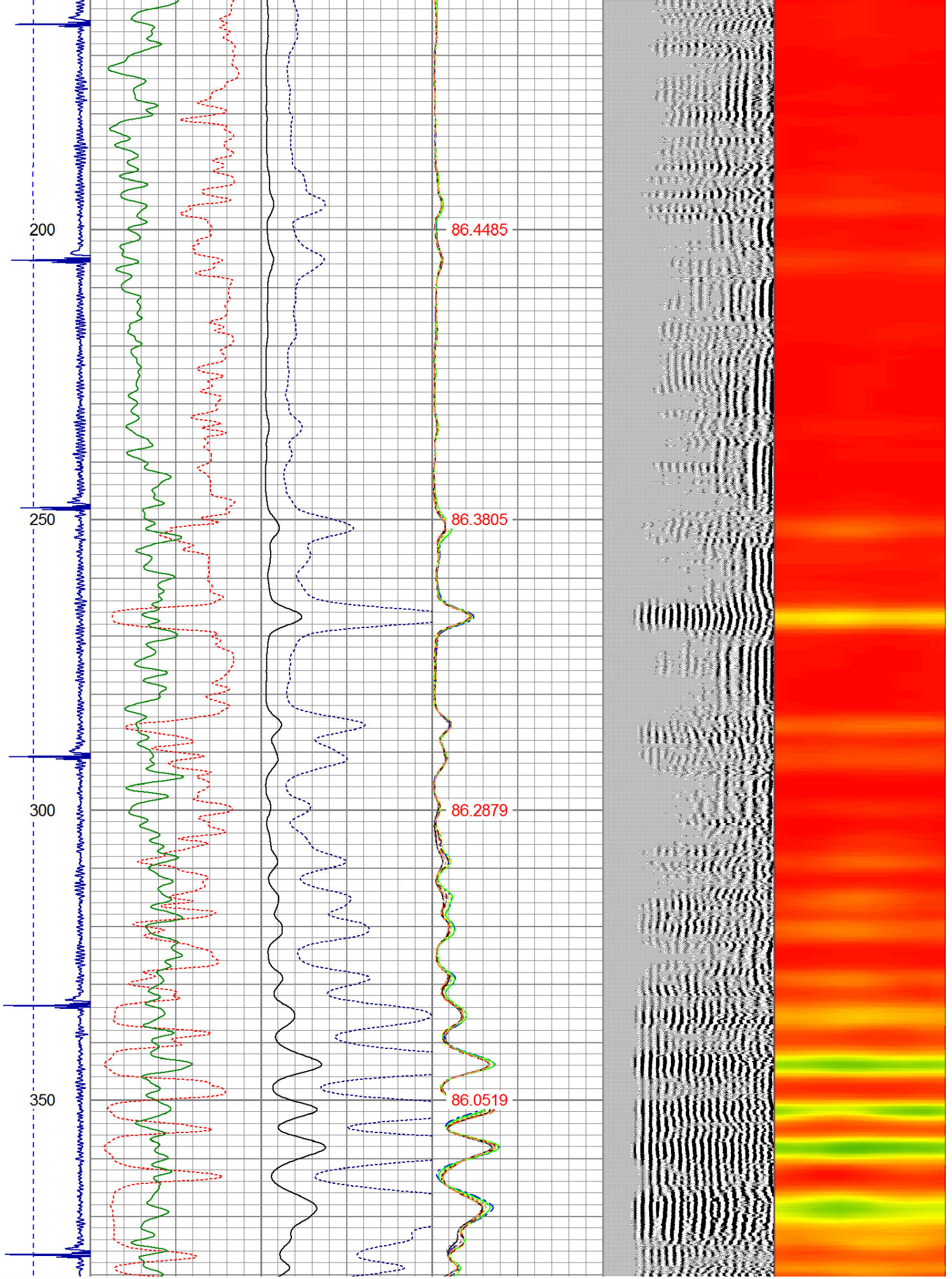


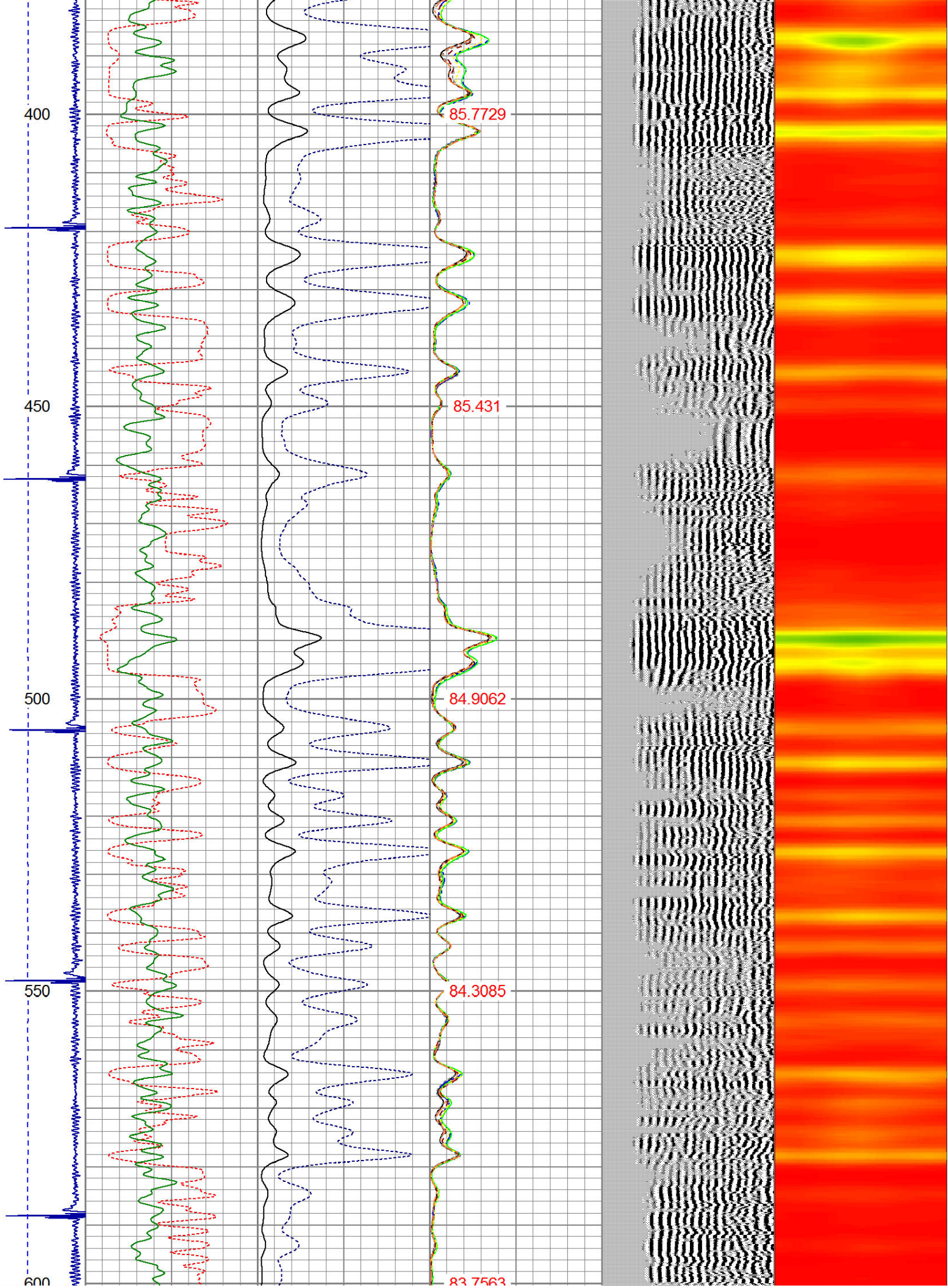
Dataset: megan state h21-28d.db: field/well/run1/pass2
 Total Length: 19.96 ft
 Total Weight: 165.00 lb
 O.D.: 2.75 in

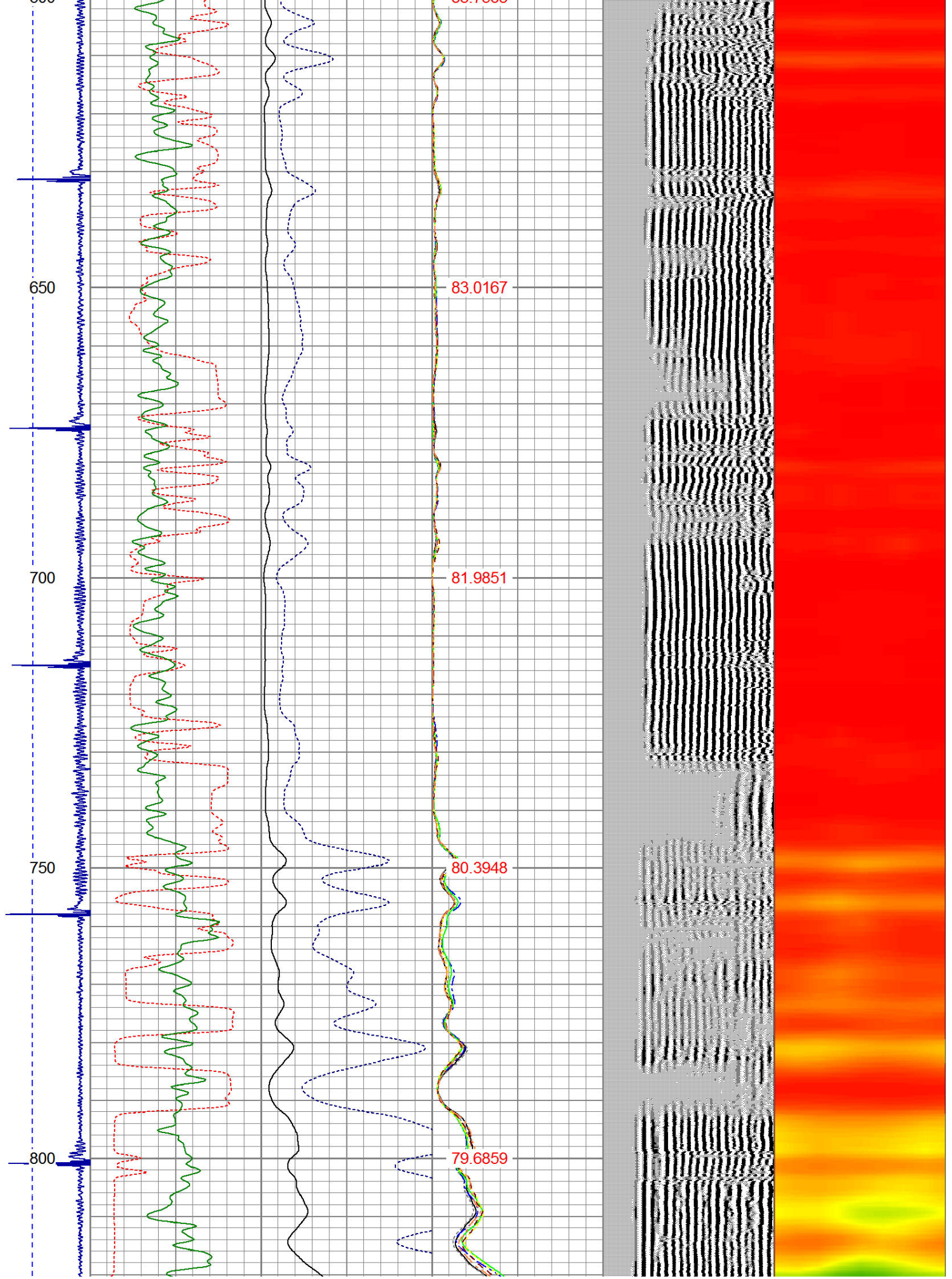
Database File: megan state h21-28d.db
 Dataset Pathname: pass2
 Presentation Format: ips_rbt

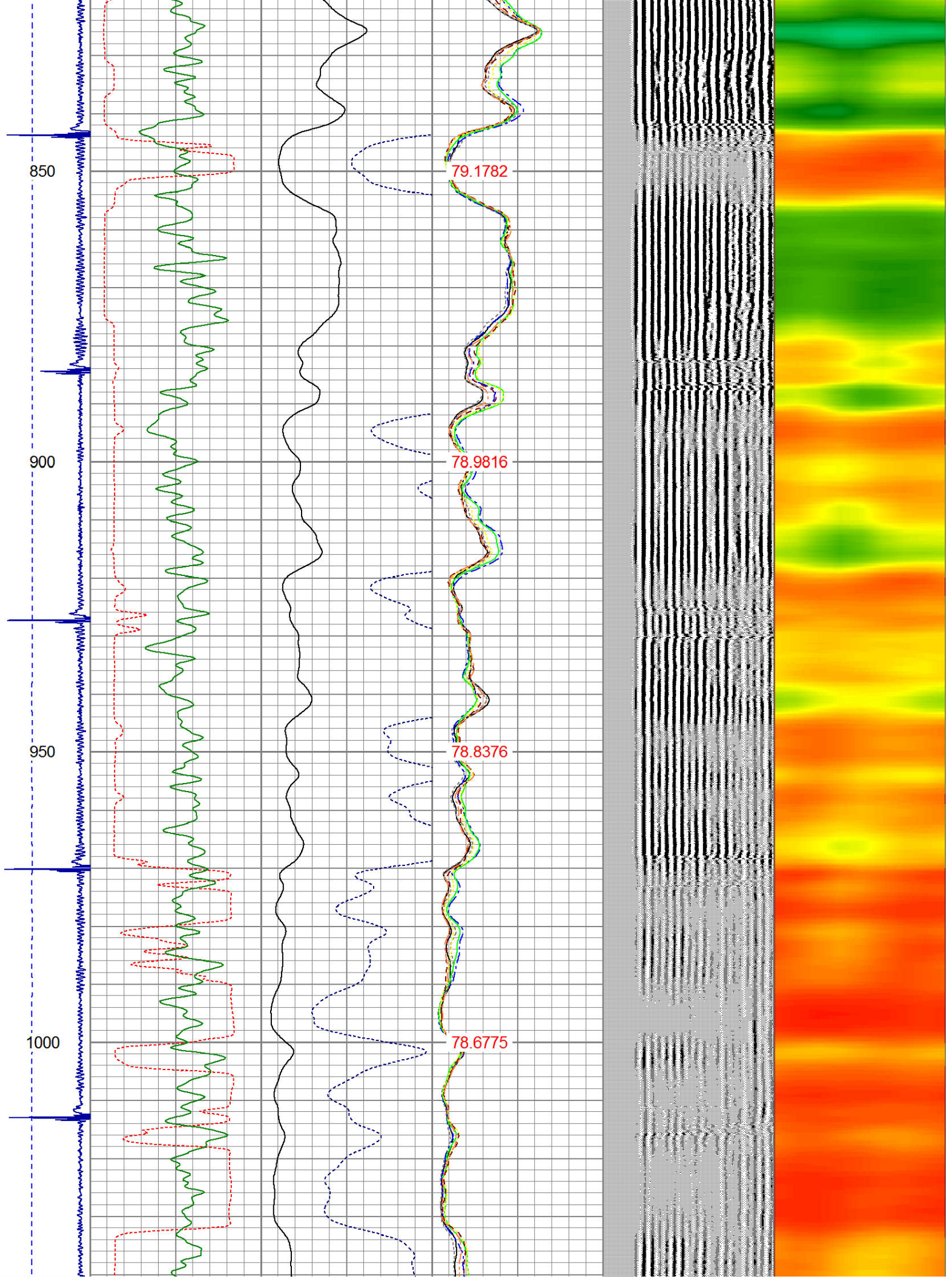
-9	CCL	1	200	TT (usec)	1000	0	AMP (mV)	100	0	AMPS1	100	200	VDL	1200	1	Cement Map	8
	LSPD		0	GR (GAPI)	200	0	AMPx5 (mV)	20	0	AMPS2	100				1		100
	(ft/min)		200	GR (GAPI)	400				0	AMPS4	100						
0		250							0	AMPS5	100						
									0	AMPS6	100						
									0	AMPS7	100						
									0	AMPS8	100						
										IntTemp							
										(degF)							

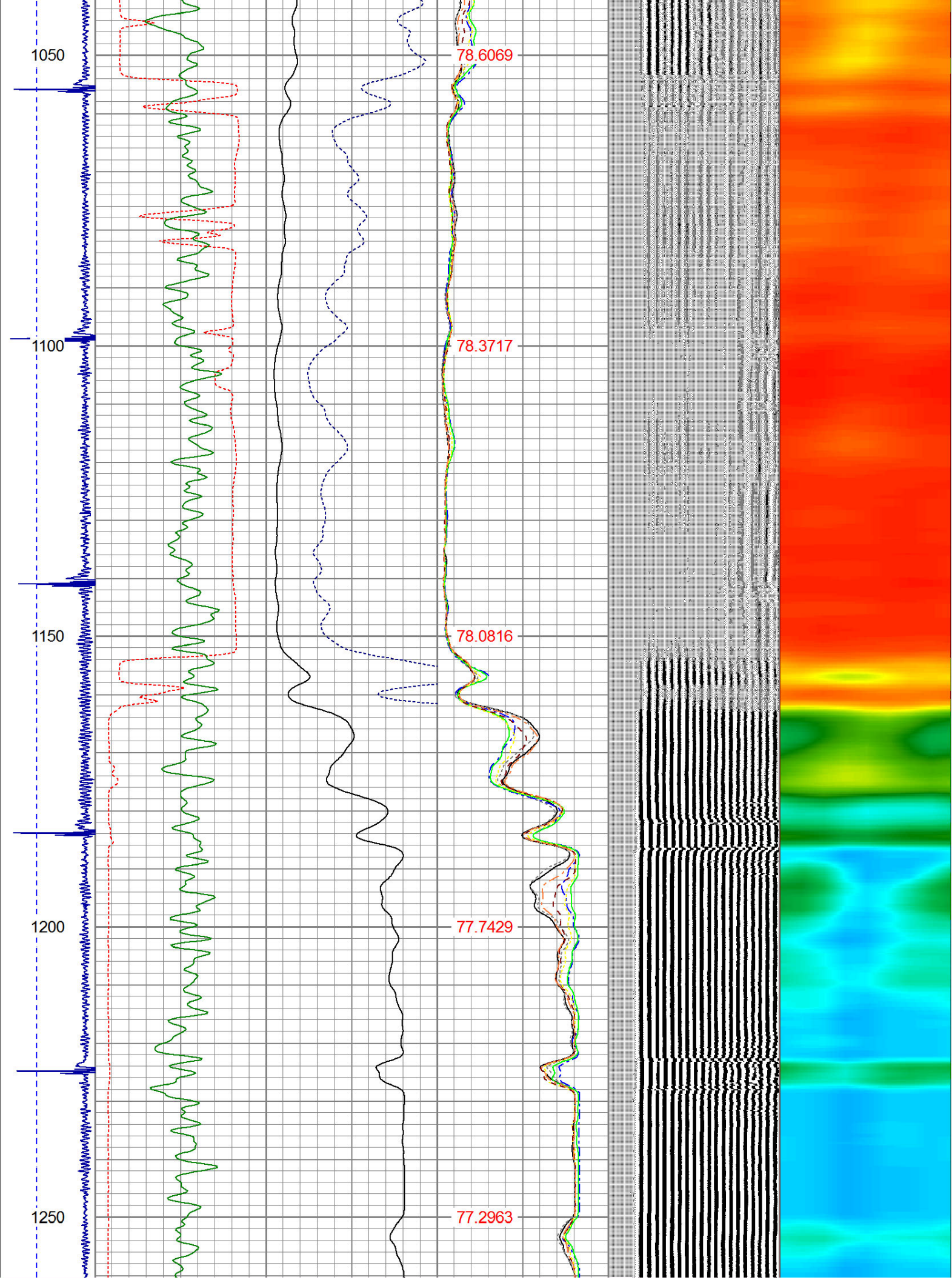


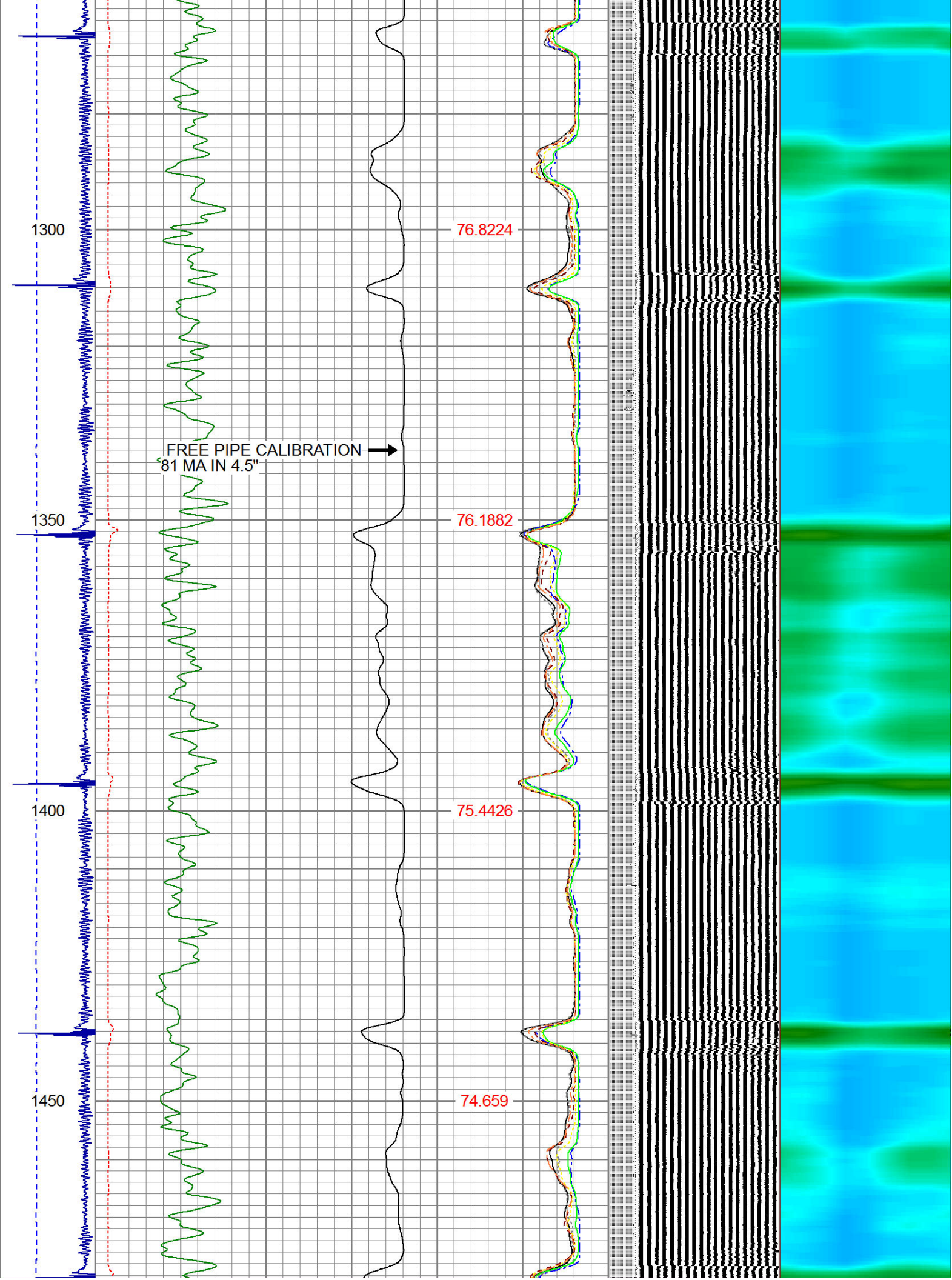


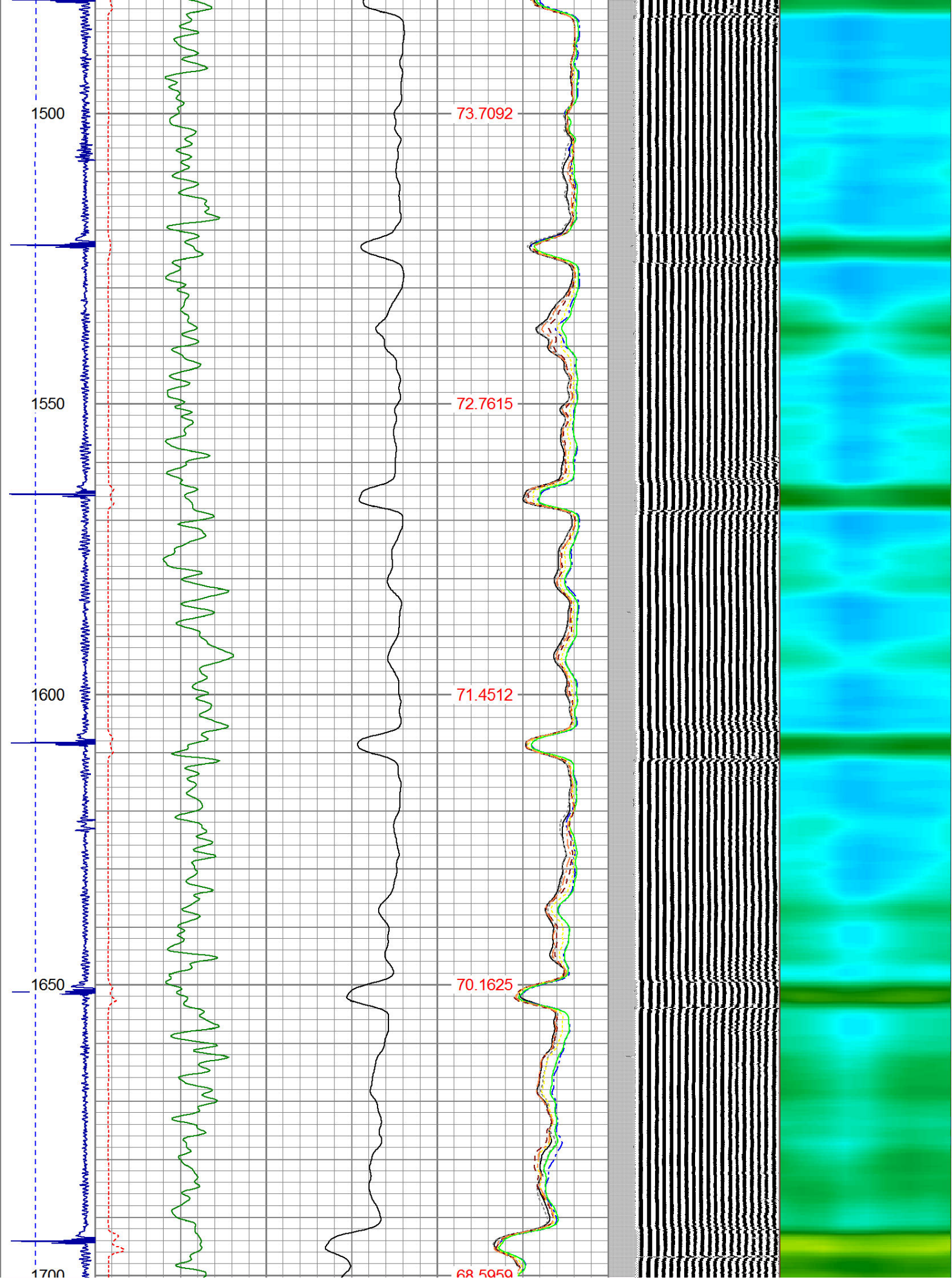


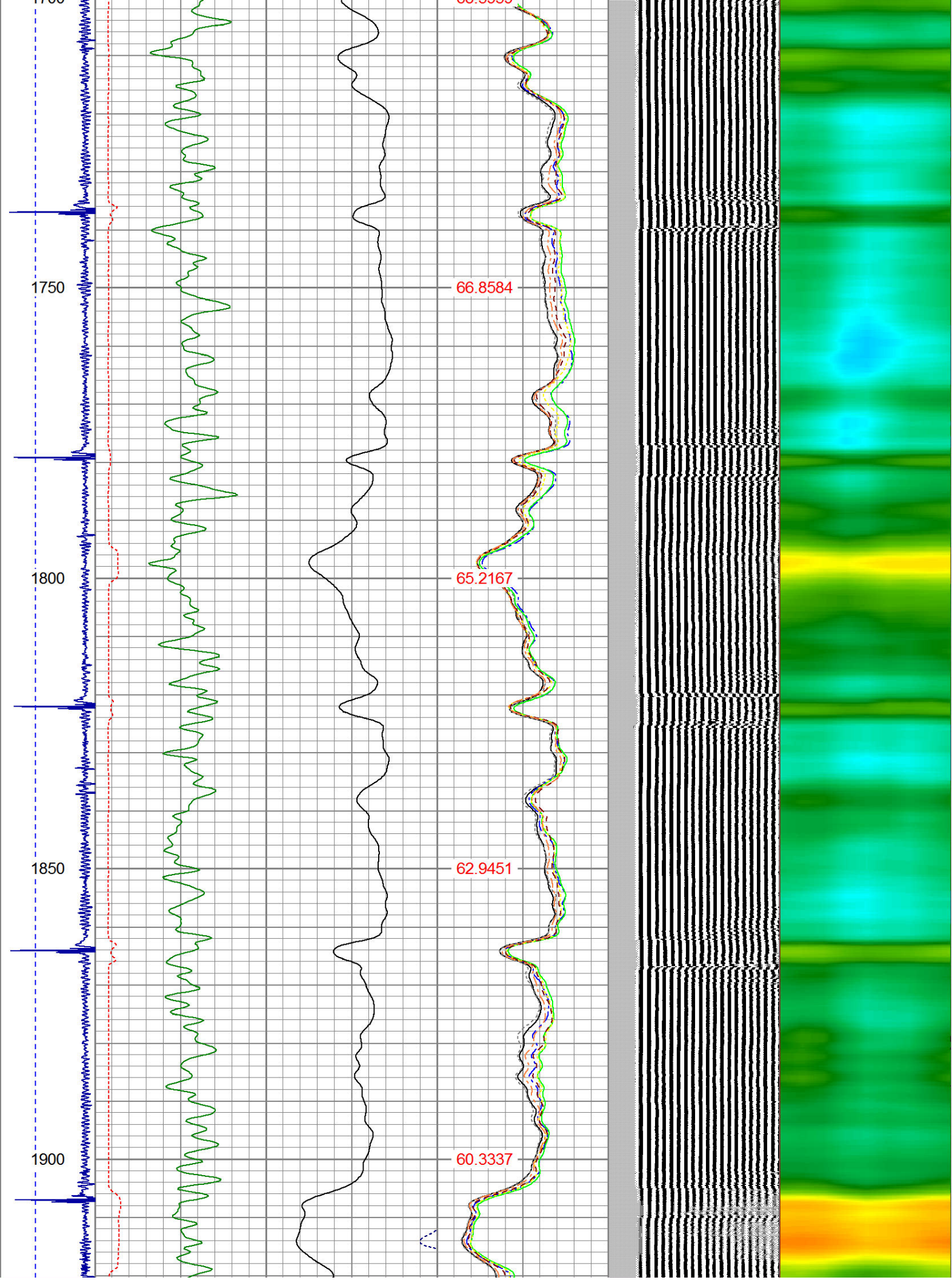


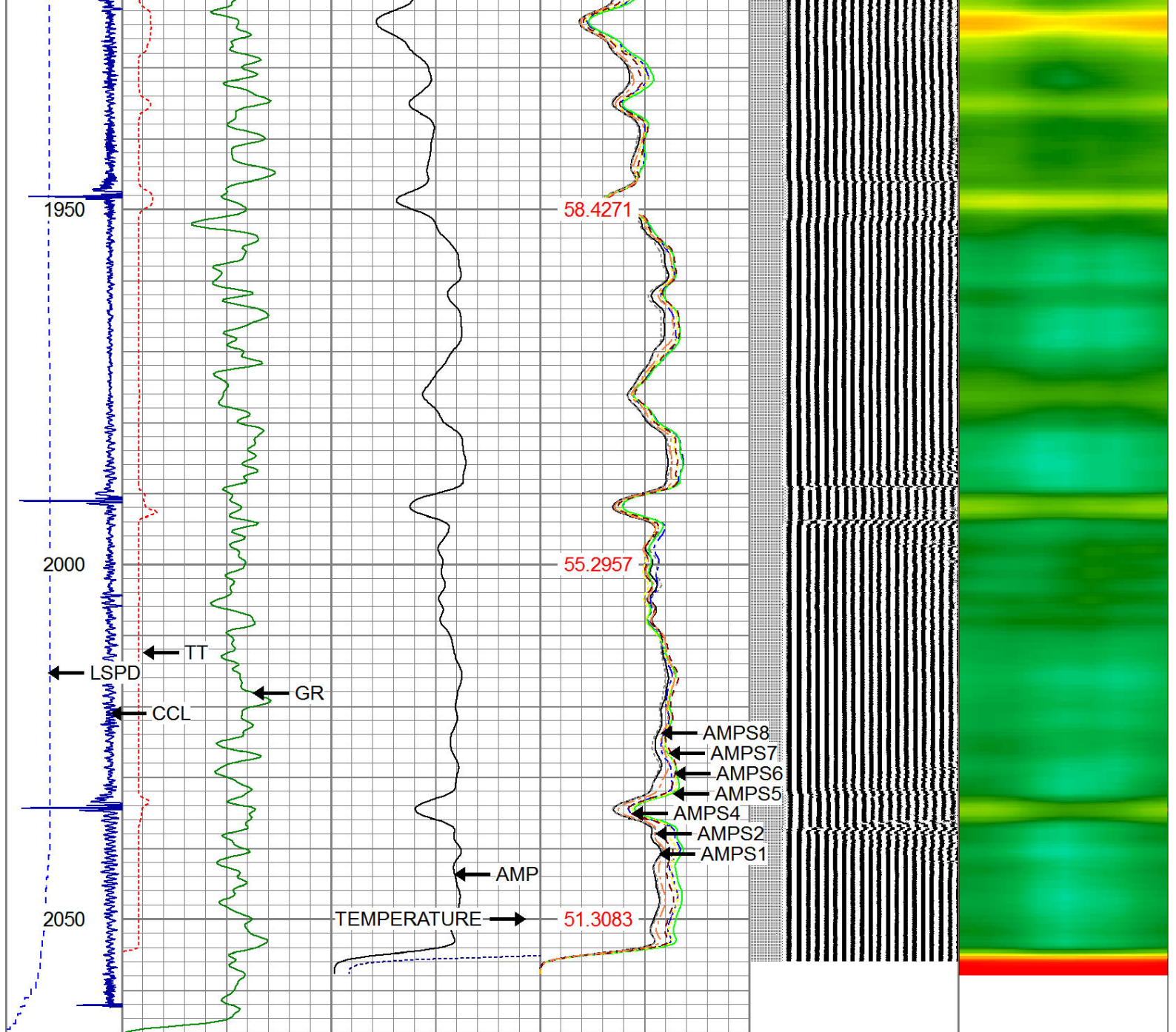












-9	CCL	1	200	TT (usec)	1000	0	AMP (mV)	100	0	AMPS1	100	200	VDL	1200	1	Cement Map	8
	LSPD		0	GR (GAPI)	200	0	AMPx5 (mV)	20	0	AMPS2	100				1		100
	(ft/min)		200	GR (GAPI)	400				0	AMPS4	100						
0	250								0	AMPS5	100						
									0	AMPS6	100						
									0	AMPS7	100						
									0	AMPS8	100						
										IntTemp							
										(degF)							



WARRIOR
ENERGY SERVICES

Company KERR McGEE OIL AND GAS
 Well MEGAN STATE H21-28D
 Field WATTENBERG
 County WELD

