



March 5, 2015

Mr. Matt Lepore, Director  
Colorado Oil and Gas Conservation Commission  
1120 Lincoln Street  
Suite 801  
Denver, Colorado 80203

**RE: COGCC Rule 318A.e.: Proposed Wellbore Spacing Unit  
DT-HABITAT C3-5-6 WELL  
NWNE Section 5, Township 5 North, Range 65 West  
Weld County, Colorado**

Dear Mr. Lepore:

Extraction Oil & Gas is planning to drill the above referenced well in accordance with the provisions set out in COGCC Rule 318A.e. Extraction's proposed wellbore spacing unit consists of:

**DT-HABITAT C3-5-6 (JSand)**

Sec. 5-(NW/4);  
Sec. 6-(N/2);  
T5N-R65W 6th P.M.  
Containing 480 acres more or less.

Extraction is not the only owner within the proposed wellbore spacing unit and has provided notice to the remaining owner(s) within this spacing unit, as required by COGCC Rule 318A.e. Copies of the required notification letters are on file at Extraction's office. The required thirty (30) day notice period has elapsed absent the receipt by Extraction of any objection to their proposal by the owner(s) within the proposed spacing unit for the subject well.

Extraction respectfully requests the COGCC review the enclosed information and approve the requested sundry for the **DT-HABITAT C3-5-6 Well**.

Respectfully,

Alyssa Andrews  
Operations Engineer  
Agent for Extraction Oil & Gas

Attachment: Proposed Spacing Unit Plat

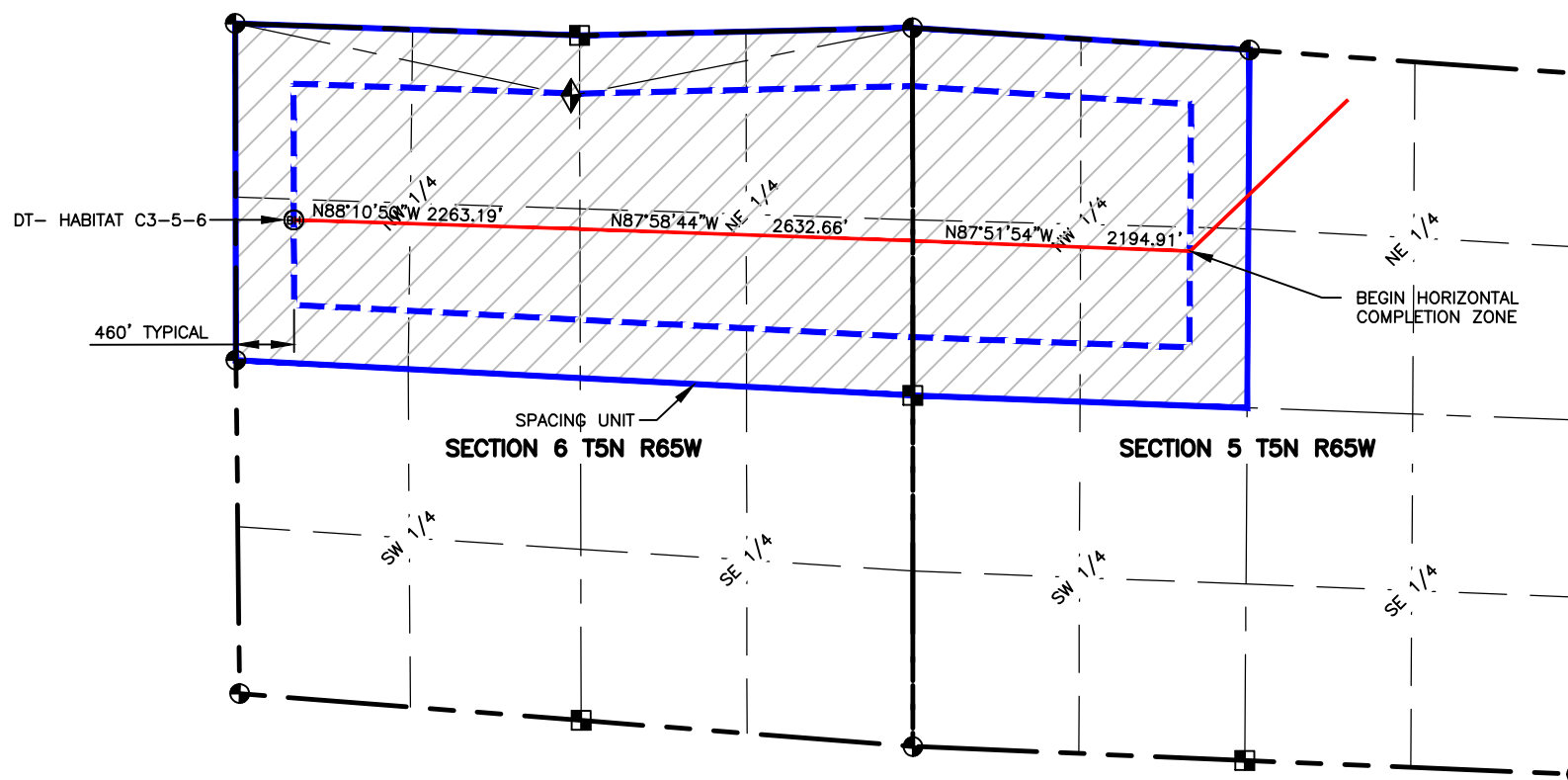
NAME: HABITAT SPACING UNIT: NW/4, & NE/4, SEC 6, T5N, 65W; & NW/4, SEC 5, T5N, 65W; UNIT ACREAGE: 480

WELL NAME	SURFACE LOCATION				BEGIN HORIZONTAL COMPLETION ZONE				END HORIZONTAL COMPLETION ZONE			
	DIST.	DIR.	DIST.	DIR.	DIST.	DIR.	DIST.	DIR.	DIST.	DIR.	DIST.	DIR.
DT-HABITAT C3-5-6	382'	FNL	1684'	FEL	1617'	FNL	2193'	FWL	1535'	FNL	460'	FWL



0 1500

SCALE: 1"= 1500'  
U.S. SURVEY FEET



**LAMP RYNEARSON**  
& ASSOCIATES

4715 Innovation Drive 970.226.0342 | P  
Fort Collins, CO 80525 970.226.0879 | F  
www.LRA-Inc.com

Proposed Spacing Unit Exhibit  
Downtown Directional Project  
Habitat

**LEGEND**

- ⊕ ALIQUOT CORNER
- ⊗ BOTTOM HOLE
- ⊠ COMPUTED FROM GLO RECORDS
- SECTION LINE
- QUARTER SECTION LINE
- SIXTEENTH LINE
- ◆ UNION COLONY CORNER
- △ COMPUTED ALIQUOT CORNER FROM MONUMENT ACCESSORIES

drawn by

date

cogcc id

project - task number

book and page

surface - location

NDB

2/2/15

432599

0211012.02-502

NW/4 NE/4 SEC 5 T5N R65W

path\filename

P:\\_Engineering\0211012.02\DRAWINGS\EXHIBITS\0211012-02PSUE- HABITAT C-3-5-6.dwg

P:\\_Engineering\0211012.02\DRAWINGS\EXHIBITS\0211012-02PSUE- HABITAT C-3-5-6.dwg, 2/2/2015 3:09:47 PM, KELVIN WIESE, LAMP RYNEARSON & ASSOCIATES