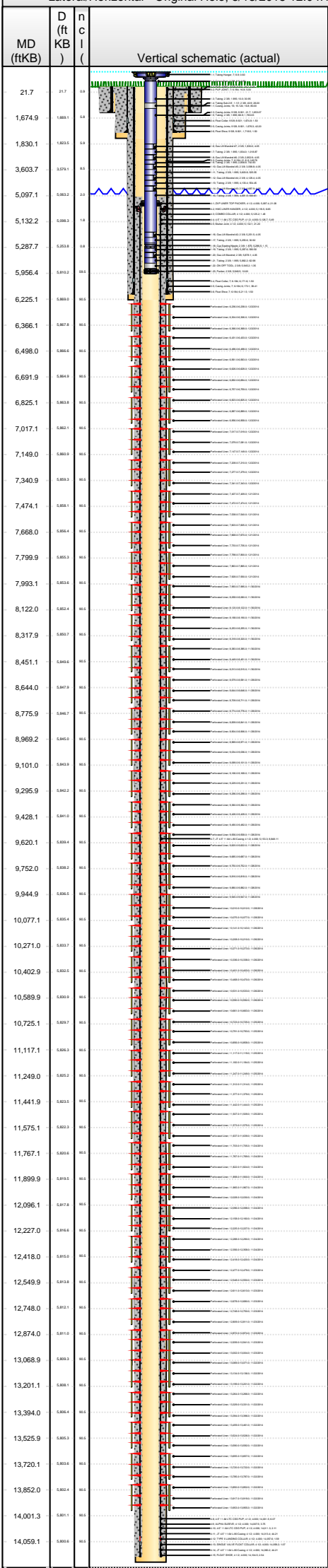




Lease Review  
Well Name: RAZOR 21C-0908

API Number 051233952300	WPC ID 1CO0761088	Well Permit Number	Field Name DJ Horizontal Niobrara	County Weld	State CO
Well Configuration Type Lateral/Horizontal	Orig KB Elv (ft) 4,860.80	Ground Elevation (ft) 4,844.00	Casing Flange Elevation (ft)	Tubing Head Elevation (ft)	Total Depth (ftKB) 14,236.0
Original Spud Date 8/8/2014	Completion Date 12/2/2014	Asset Group Redtail	Responsible Engineer Charles Ohlson	N/S Dist (ft) 329.0 N/S Ref FNL	E/W Dist (ft) 1,898.0 E/W Ref FWL
Lot	Quarter 1 NE	Quarter 2 NW	Quarter 3	Quarter 4	Section 21
			Section Suffix	Section Type	Township 10 N
					Range 58 W

Lateral/Horizontal - Original Hole, 3/13/2015 12:04:15 PM



Wellbore Sections

Section Des	Wellbore Name	Start Date	Size (in)	Act Top (ftKB)	Act Btm (ftKB)
Conductor	Original Hole	7/23/2014	20	16.8	96.8
Surface	Original Hole	8/8/2014	13 1/2	96.8	1,730.0
Intermediate	Original Hole	8/10/2014	8 3/4	1,730.0	6,225.0
Lateral	Original Hole	8/13/2014	6	6,225.0	14,236.0

Conductor Pipe, 96.8ftKB

OD (in)	Wt (lb/ft)	Grade	Top (ftKB)	Btm (ftKB)	Len (ft)	Item Des
16	75.00	J-55	16.8	96.8	80.00	Casing Joints

Surface Csg, 1,720.0ftKB

OD (in)	Wt (lb/ft)	Grade	Top (ftKB)	Btm (ftKB)	Len (ft)	Item Des
9 5/8	36.00	J-55	16.7	16.7	0.00	LANDING JOINT
9 5/8	36.00	J-55	16.7	21.7	5.00	PUP JOINT
9 5/8	36.00	J-55	21.7	1,674.8	1,653.07	Casing Joints
9 5/8	36.00	J-55	1,674.8	1,676.3	1.50	Float Collar
9 5/8	36.00	J-55	1,676.3	1,718.5	42.20	Casing Joints
9 5/8	36.00	J-55	1,718.5	1,720.0	1.50	Float Shoe

Intermediate Csg, 6,213.0ftKB

OD (in)	Wt (lb/ft)	Grade	Top (ftKB)	Btm (ftKB)	Len (ft)	Item Des
7	29.00	L-80	16.8	16.8	0.00	LANDING JOINT
7	29.00	L-80	16.8	21.8	5.00	PUP JOINT
7	29.00	L-80	21.8	6,171.6	6,149.76	Casing Joints
7	29.00	L-80	6,171.6	6,173.1	1.50	Float Collar
7	29.00	L-80	6,173.1	6,211.5	38.41	Casing Joints
7	29.00	L-80	6,211.5	6,213.0	1.50	Float Shoe

Liner, 14,107.0ftKB

OD (in)	Wt (lb/ft)	Grade	Top (ftKB)	Btm (ftKB)	Len (ft)	Item Des
4 1/2	11.60	L-80	5,097.4	5,118.5	21.08	ZXP LINER TOP PACKER
4 1/2	11.60	L-80	5,118.5	5,125.2	6.65	HMC LINER HANGER
4 1/2	11.60	L-80	5,125.2	5,126.7	1.48	COMBO COLLAR
4 1/2	11.60	L-80	5,126.7	5,132.1	5.49	4.5" 11.6# LTC CSG PUP
4 1/2	11.60	L-80	5,132.1	5,153.3	21.20	Marker Joint
4 1/2	11.60	L-80	5,153.3	5,153.3	0.00	JT 4.5" 11.6# L-80 Casing
4 1/2	11.60	L-80	5,153.3	14,001.5	8,848.11	JT 4.5" 11.6# L-80 Casing
4 1/2	11.60	L-80	14,001.5	14,007.5	6.07	4.5" 11.6# LTC CSG PUP
4 1/2	11.60	L-80	14,007.5	14,011.3	3.75	ALPHA SLEEVE
4 1/2	11.60	L-80	14,011.3	14,013.4	2.11	4.5" 11.6# LTC CSG PUP
4 1/2	11.60	L-80	14,013.4	14,057.6	44.21	JT 4.5" 11.6# L-80 Casing
4 1/2	11.60	L-80	14,057.6	14,059.2	1.59	TYPE II LANDING COLLAR
4 1/2	11.60	L-80	14,059.2	14,060.3	1.07	SINGLE VALVE FLOAT COLLAR
4 1/2	11.60	L-80	14,060.3	14,104.5	44.21	JT 4.5" 11.6# L-80 Casing
4 1/2	11.60	L-80	14,104.5	14,107.0	2.54	FLOAT SHOE

Cement Stages

Des	Pump Start Date	Drill Out Date	Top (ftKB)	Btm (ftKB)	Top Meas Meth
Conductor Cement	7/23/2014		16.8	96.8	Returns to Surface
Surface Casing Cement	8/9/2014		16.8	1,720.0	Returns to Surface
Intermediate Casing Cement	8/12/2014		16.8	6,213.0	Returns to Surface
Liner Cement	8/18/2014		5,097.0	14,107.0	Volume Calculations

Perforations

Type of Hole	Date	Top (ftKB)	Btm (ftKB)	Zone
Perforated Liner	12/2/2014	6,236.0	6,238.0	Niobrara, Original Hole
Perforated Liner	12/2/2014	6,304.0	6,306.0	Niobrara, Original Hole
Perforated Liner	12/2/2014	6,366.0	6,368.0	Niobrara, Original Hole
Perforated Liner	12/2/2014	6,431.0	6,433.0	Niobrara, Original Hole
Perforated Liner	12/2/2014	6,496.0	6,498.0	Niobrara, Original Hole
Perforated Liner	12/2/2014	6,561.0	6,563.0	Niobrara, Original Hole
Perforated Liner	12/2/2014	6,626.0	6,628.0	Niobrara, Original Hole
Perforated Liner	12/2/2014	6,692.0	6,694.0	Niobrara, Original Hole
Perforated Liner	12/2/2014	6,757.0	6,759.0	Niobrara, Original Hole
Perforated Liner	12/2/2014	6,823.0	6,825.0	Niobrara, Original Hole
Perforated Liner	12/2/2014	6,887.0	6,889.0	Niobrara, Original Hole
Perforated Liner	12/2/2014	6,956.0	6,958.0	Niobrara, Original Hole
Perforated Liner	12/2/2014	7,017.0	7,019.0	Niobrara, Original Hole
Perforated Liner	12/2/2014	7,079.0	7,081.0	Niobrara, Original Hole
Perforated Liner	12/2/2014	7,147.0	7,149.0	Niobrara, Original Hole
Perforated Liner	12/2/2014	7,208.0	7,210.0	Niobrara, Original Hole
Perforated Liner	12/2/2014	7,277.0	7,279.0	Niobrara, Original Hole
Perforated Liner	12/2/2014	7,341.0	7,343.0	Niobrara, Original Hole
Perforated Liner	12/1/2014	7,407.0	7,409.0	Niobrara, Original Hole
Perforated Liner	12/1/2014	7,472.0	7,474.0	Niobrara, Original Hole

Page 2/7



Lease Review  
Well Name: RAZOR 21C-0908

API Number 051233952300	WPC ID 1CO0761088	Well Permit Number	Field Name DJ Horizontal Niobrara	County Weld	State CO
Well Configuration Type Lateral/Horizontal	Orig KB Elv (ft) 4,860.80	Ground Elevation (ft) 4,844.00	Casing Flange Elevation (ft)	Tubing Head Elevation (ft)	Total Depth (ftKB) 14,236.0
Original Spud Date 8/8/2014	Completion Date 12/2/2014	Asset Group Retail	Responsible Engineer Charles Ohlson	N/S Dist (ft) 329.0 N/S Ref FNL	E/W Dist (ft) 1,898.0 E/W Ref FWL
Lot	Quarter 1 NE	Quarter 2 NW	Quarter 3	Quarter 4	Section 21
			Section Suffix	Section Type	Township 10 N
					Township N/S Dir N
					Range 58
					Range E/W Dir W
					Meridian

Lateral/Horizontal - Original Hole, 3/13/2015 12:04:18 PM						Perforations				
MD (ftKB)	D (ft KB)	n c l ( )	Vertical schematic (actual)	Logs		Type of Hole	Date	Top (ftKB)	Btm (ftKB)	Zone
21.7	21.7	3.0				Perforated Liner	11/24/2014	12,356.0	12,358.0	Niobrara, Original Hole
1,674.9	1,680.1	1.8				Perforated Liner	11/24/2014	12,418.0	12,420.0	Niobrara, Original Hole
1,830.1	1,832.5	1.9				Perforated Liner	11/23/2014	12,477.0	12,479.0	Niobrara, Original Hole
3,803.7	3,874.1	4.5				Perforated Liner	11/23/2014	12,548.0	12,550.0	Niobrara, Original Hole
5,097.1	5,089.2	2.0				Perforated Liner	11/23/2014	12,611.0	12,613.0	Niobrara, Original Hole
5,132.2	5,088.2	1.8				Perforated Liner	11/23/2014	12,678.0	12,680.0	Niobrara, Original Hole
5,287.7	5,253.8	1.8				Perforated Liner	11/23/2014	12,748.0	12,750.0	Niobrara, Original Hole
5,956.4	5,892.5	1.8				Perforated Liner	11/23/2014	12,809.0	12,811.0	Niobrara, Original Hole
6,225.1	5,889.0	1.8				Perforated Liner	11/23/2014	12,872.0	12,874.0	Niobrara, Original Hole
6,366.1	5,887.8	1.8				Perforated Liner	11/23/2014	12,939.0	12,941.0	Niobrara, Original Hole
6,498.0	5,886.5	1.8				Perforated Liner	11/23/2014	13,002.0	13,004.0	Niobrara, Original Hole
6,891.9	5,884.2	1.8				Perforated Liner	11/22/2014	13,069.0	13,071.0	Niobrara, Original Hole
6,825.1	5,883.8	1.8				Perforated Liner	11/22/2014	13,134.0	13,136.0	Niobrara, Original Hole
7,017.1	5,882.1	1.8				Perforated Liner	11/22/2014	13,199.0	13,201.0	Niobrara, Original Hole
7,149.0	5,880.9	1.8				Perforated Liner	11/22/2014	13,264.0	13,266.0	Niobrara, Original Hole
7,340.9	5,889.2	1.8				Perforated Liner	11/22/2014	13,329.0	13,331.0	Niobrara, Original Hole
7,474.1	5,884.1	1.8				Perforated Liner	11/22/2014	13,394.0	13,396.0	Niobrara, Original Hole
7,668.0	5,885.4	1.8				Perforated Liner	11/22/2014	13,459.0	13,461.0	Niobrara, Original Hole
7,799.9	5,885.2	1.8				Perforated Liner	11/22/2014	13,524.0	13,526.0	Niobrara, Original Hole
7,993.1	5,883.0	1.8				Perforated Liner	11/22/2014	13,589.0	13,592.0	Niobrara, Original Hole
8,122.0	5,882.4	1.8				Perforated Liner	11/22/2014	13,655.0	13,657.0	Niobrara, Original Hole
8,317.9	5,880.1	1.8				Perforated Liner	11/22/2014	13,720.0	13,722.0	Niobrara, Original Hole
8,451.1	5,880.0	1.8				Perforated Liner	11/22/2014	13,785.0	13,787.0	Niobrara, Original Hole
8,644.0	5,887.8	1.8				Perforated Liner	11/22/2014	13,850.0	13,852.0	Niobrara, Original Hole
8,775.9	5,886.1	1.8				Perforated Liner	11/22/2014	13,917.0	13,919.0	Niobrara, Original Hole
8,969.2	5,885.0	1.8				Perforated Liner	11/22/2014	13,953.0	13,955.0	Niobrara, Original Hole
9,101.0	5,883.8	1.8				Sand Frac on 11/22/2014 06:00				
9,295.9	5,880.2	1.8				Comment				
9,428.1	5,881.0	1.8				Treatment End Date:12/2/2014; Number of staged intervals: 40;				
9,620.1	5,883.4	1.8				Min frac gradient: 0.798 psi/ft; Number of perfs: 1404; Total 28% HCl used: 945 bbl; 90212 bbl QuadraFrac XL Gel, 15293 bbl QuadraFrac Linear Gel, 28734 bbl Slickwater				
9,752.0	5,884.2	1.8				Min Top De... 6,236.0				
9,944.9	5,886.5	1.8				Max Btm D... 13,955.0				
10,077.1	5,885.4	1.8				Frac Length (ft)				
10,271.0	5,883.7	1.8				Stim/Treat Fluids				
10,402.9	5,882.5	1.8				QuadraFrac XL Gel; QuadraFrac Linear Gel; 28% HCL, <fluidtyp>				
10,589.9	5,880.9	1.8				Proppant Frm (lb) Total Clean Vol... Avg Treat Rate... Max Treat Rate... Avg Treat Press... P Max (psi) Frac Gradient (p... 6,533,240.0 135184.40 45.00 75.00 4,434.0 7,760.0 0.75				
10,725.1	5,880.7	1.8				Stim/Treat Stages				
11,117.1	5,886.3	1.8				Stg # Start Date Top Depth (ftKB) Bottom Depth (ftKB) Vol Clean Pump (bbl) Vol Slurry (bbl)				
11,249.0	5,885.2	1.8				1 11/22/2014 13,850.0 13,955.0 3093.50 3218.80				
11,441.9	5,883.0	1.8				Additive Type Amount Units Sand Size				
11,575.1	5,882.2	1.8				Proppant 20/40 WS 113,401.8 lb 20/40				
11,767.1	5,880.6	1.8				Additive Type Amount Units Sand Size				
11,899.9	5,881.0	1.8				Proppant 40/70 WS 2,968.0 lb 40/70				
12,096.1	5,887.8	1.8				Stg # Start Date Top Depth (ftKB) Bottom Depth (ftKB) Vol Clean Pump (bbl) Vol Slurry (bbl)				
12,227.0	5,886.5	1.8				2 11/22/2014 13,655.0 13,787.0 3284.00 3410.20				
12,418.0	5,885.0	1.8				Additive Type Amount Units Sand Size				
12,549.9	5,883.8	1.8				Proppant 20/40 WS 113,989.8 lb 20/40				
12,748.0	5,882.1	1.8				Additive Type Amount Units Sand Size				
12,874.0	5,881.0	1.8				Proppant 40/70 WS 3,263.0 lb 40/70				
13,068.9	5,880.9	1.8				Stg # Start Date Top Depth (ftKB) Bottom Depth (ftKB) Vol Clean Pump (bbl) Vol Slurry (bbl)				
13,201.1	5,880.1	1.8				3 11/22/2014 13,459.0 13,592.0 3004.60 3128.80				
13,394.0	5,886.4	1.8				Additive Type Amount Units Sand Size				
13,525.9	5,885.2	1.8				Proppant 20/40 WS 112,643.1 lb 20/40				
13,720.1	5,883.0	1.8				Additive Type Amount Units Sand Size				
13,852.0	5,882.4	1.8				Proppant 40/70 WS 2,684.0 lb 40/70				
14,001.3	5,880.1	1.8				Stg # Start Date Top Depth (ftKB) Bottom Depth (ftKB) Vol Clean Pump (bbl) Vol Slurry (bbl)				
14,059.1	5,880.0	1.8				4 11/22/2014 13,264.0 13,396.0 3041.40 3163.90				
						Additive Type Amount Units Sand Size				
						Proppant 20/40 WS 110,833.2 lb 20/40				
						Additive Type Amount Units Sand Size				
						Proppant 40/70 WS 2,953.0 lb 40/70				
						Stg # Start Date Top Depth (ftKB) Bottom Depth (ftKB) Vol Clean Pump (bbl) Vol Slurry (bbl)				
						5 11/23/2014 13,069.0 13,201.0 3527.70 3649.70				
						Additive Type Amount Units Sand Size				
						Proppant 20/40 WS 110,115.4 lb 20/40				
						Additive Type Amount Units Sand Size				
						Proppant 40/70 WS 3,224.0 lb 40/70				
						Stg # Start Date Top Depth (ftKB) Bottom Depth (ftKB) Vol Clean Pump (bbl) Vol Slurry (bbl)				
						6 11/23/2014 12,872.0 13,071.0 3612.60 3808.10				
						Additive Type Amount Units Sand Size				
						Proppant 20/40 WS 178,478.1 lb 20/40				
						Additive Type Amount Units Sand Size				
						Proppant 40/70 WS 3,085.0 lb 40/70				
						Stg # Start Date Top Depth (ftKB) Bottom Depth (ftKB) Vol Clean Pump (bbl) Vol Slurry (bbl)				
						7 11/23/2014 12,678.0 12,811.0 3573.50 3771.10				
						Additive Type Amount Units Sand Size				
						Proppant 20/40 WS 180,001.4 lb 20/40				
						Additive Type Amount Units Sand Size				
						Proppant 40/70 WS 3,557.0 lb 40/70				
						Stg # Start Date Top Depth (ftKB) Bottom Depth (ftKB) Vol Clean Pump (bbl) Vol Slurry (bbl)				
						8 11/23/2014 12,477.0 12,613.0 3438.40 3591.50				
						Additive Type Amount Units Sand Size				
						Proppant 20/40 WS 139,265.5 lb 20/40				
						Additive Type Amount Units Sand Size				
						Proppant 40/70 WS 2,968.0 lb 40/70				





Lease Review  
Well Name: RAZOR 21C-0908

API Number 051233952300		WPC ID 1CO0761088		Well Permit Number		Field Name DJ Horizontal Niobrara		County Weld		State CO								
Well Configuration Type Lateral/Horizontal		Orig KB Elv (ft) 4,860.80		Ground Elevation (ft) 4,844.00		Casing Flange Elevation (ft)		Tubing Head Elevation (ft)		Total Depth (ftKB) 14,236.0								
Original Spud Date 8/8/2014		Completion Date 12/2/2014		Asset Group Redtail		Responsible Engineer Charles Ohlson		N/S Dist (ft) 329.0		N/S Ref FNL		E/W Dist (ft) 1,898.0		E/W Ref FWL				
Lot		Quarter 1 NE	Quarter 2 NW	Quarter 3	Quarter 4	Section 21	Section Suffix	Section Type	Township 10 N	Township N/S Dir	Range 58 W	Meridian						
Lateral/Horizontal - Original Hole, 3/13/2015 12:04:20 PM						Stim/Treat Stages												
MD (ftKB)	D (ft KB)	n ( )	c ( )	l ( )	Vertical schematic (actual)	Logs	Stg #		Start Date		Top Depth (ftKB)		Bottom Depth (ftKB)		Vol Clean Pump (bbl)		Vol Slurry (bbl)	
							9		11/24/2014		12,288.0		12,420.0		3580.60		3776.20	
							Additive		Type		Amount		Units		Sand Size			
							Proppant		20/40 WS		179,159.6		lb		20/40			
21.7	21.7	3.0					Additive		Type		Amount		Units		Sand Size			
							Proppant		40/70 WS		2,560.0		lb		40/70			
1,674.9	1,680.1	1.8					Stg #		Start Date		Top Depth (ftKB)		Bottom Depth (ftKB)		Vol Clean Pump (bbl)		Vol Slurry (bbl)	
							10		11/24/2014		12,096.0		12,227.0		3637.50		3830.40	
1,830.1	1,832.5	1.8					Additive		Type		Amount		Units		Sand Size			
							Proppant		20/40 WS		176,347.0		lb		20/40			
3,603.7	3,574.1	4.0					Additive		Type		Amount		Units		Sand Size			
							Proppant		40/70 WS		2,807.0		lb		40/70			
5,097.1	5,089.2	1.0					Stg #		Start Date		Top Depth (ftKB)		Bottom Depth (ftKB)		Vol Clean Pump (bbl)		Vol Slurry (bbl)	
							11		11/24/2014		11,898.0		12,030.0		3536.30		3732.80	
5,132.2	5,089.3	1.8					Additive		Type		Amount		Units		Sand Size			
							Proppant		20/40 WS		179,445.2		lb		20/40			
5,287.7	5,253.8	1.8					Additive		Type		Amount		Units		Sand Size			
							Proppant		40/70 WS		3,053.0		lb		40/70			
5,956.4	5,892.5	1.8					Stg #		Start Date		Top Depth (ftKB)		Bottom Depth (ftKB)		Vol Clean Pump (bbl)		Vol Slurry (bbl)	
							12		11/24/2014		11,703.0		11,824.0		3564.80		3767.70	
6,225.1	5,880.0	1.0					Additive		Type		Amount		Units		Sand Size			
							Proppant		20/40 WS		185,429.8		lb		20/40			
6,366.1	5,867.8	1.0					Additive		Type		Amount		Units		Sand Size			
							Proppant		40/70 WS		3,060.0		lb		40/70			
6,498.0	5,866.5	1.0					Stg #		Start Date		Top Depth (ftKB)		Bottom Depth (ftKB)		Vol Clean Pump (bbl)		Vol Slurry (bbl)	
							13		11/25/2014		11,507.0		11,639.0		3448.40		3641.20	
6,891.9	5,864.0	1.0					Additive		Type		Amount		Units		Sand Size			
							Proppant		20/40 WS		176,283.5		lb		20/40			
6,825.1	5,863.8	1.0					Additive		Type		Amount		Units		Sand Size			
							Proppant		40/70 WS		2,816.0		lb		40/70			
7,017.1	5,862.1	1.0					Stg #		Start Date		Top Depth (ftKB)		Bottom Depth (ftKB)		Vol Clean Pump (bbl)		Vol Slurry (bbl)	
							14		11/25/2014		11,312.0		11,444.0		3300.30		3474.10	
7,149.0	5,860.9	1.0					Additive		Type		Amount		Units		Sand Size			
							Proppant		20/40 WS		158,246.0		lb		20/40			
7,340.9	5,859.3	1.0					Additive		Type		Amount		Units		Sand Size			
							Proppant		40/70 WS		3,210.0		lb		40/70			
7,474.1	5,854.1	1.0					Stg #		Start Date		Top Depth (ftKB)		Bottom Depth (ftKB)		Vol Clean Pump (bbl)		Vol Slurry (bbl)	
							15		11/25/2014		11,117.0		11,249.0		3624.50		3807.10	
7,668.0	5,856.4	1.0					Additive		Type		Amount		Units		Sand Size			
							Proppant		20/40 WS		167,088.6		lb		20/40			
7,799.9	5,855.3	1.0					Additive		Type		Amount		Units		Sand Size			
							Proppant		40/70 WS		2,507.0		lb		40/70			
7,993.1	5,853.0	1.0					Stg #		Start Date		Top Depth (ftKB)		Bottom Depth (ftKB)		Vol Clean Pump (bbl)		Vol Slurry (bbl)	
							16		11/25/2014		10,945.0		11,077.0		0.00		0.00	
8,122.0	5,852.4	1.0					Additive		Type		Amount		Units		Sand Size			
							Proppant		20/40 WS		173,122.2		lb		20/40			
8,317.9	5,850.7	1.0					Additive		Type		Amount		Units		Sand Size			
							Proppant		40/70 WS		3,229.0		lb		40/70			
8,451.1	5,848.6	1.0					Stg #		Start Date		Top Depth (ftKB)		Bottom Depth (ftKB)		Vol Clean Pump (bbl)		Vol Slurry (bbl)	
							17		11/25/2014		10,723.0		10,858.0		3610.10		3800.00	
8,644.0	5,847.0	1.0					Additive		Type		Amount		Units		Sand Size			
							Proppant		20/40 WS		173,122.2		lb		20/40			
8,775.9	5,846.7	1.0					Additive		Type		Amount		Units		Sand Size			
							Proppant		40/70 WS		3,229.0		lb		40/70			
8,969.2	5,845.0	1.0					Stg #		Start Date		Top Depth (ftKB)		Bottom Depth (ftKB)		Vol Clean Pump (bbl)		Vol Slurry (bbl)	
							18		11/25/2014		10,531.0		10,663.0		3612.80		3807.70	
9,101.0	5,843.9	1.0					Additive		Type		Amount		Units		Sand Size			
							Proppant		20/40 WS		177,966.4		lb		20/40			
9,295.9	5,842.3	1.0					Additive		Type		Amount		Units		Sand Size			
							Proppant		40/70 WS		3,229.0		lb		40/70			
9,428.1	5,841.0	1.0					Stg #		Start Date		Top Depth (ftKB)		Bottom Depth (ftKB)		Vol Clean Pump (bbl)		Vol Slurry (bbl)	
							19		11/26/2014		10,336.0		10,470.0		3545.30		3739.70	
9,589.9	5,839.9	1.0					Additive		Type		Amount		Units		Sand Size			
							Proppant		20/40 WS		177,558.0		lb		20/40			
10,725.1	5,839.7	1.0					Additive		Type		Amount		Units		Sand Size			
							Proppant		40/70 WS		2,975.0		lb		40/70			
11,117.1	5,836.3	1.0					Stg #		Start Date		Top Depth (ftKB)		Bottom Depth (ftKB)		Vol Clean Pump (bbl)		Vol Slurry (bbl)	
							20		11/26/2014		10,141.0		10,273.0		3208.60		3392.90	
11,249.0	5,835.2	1.0					Additive		Type		Amount		Units		Sand Size			
							Proppant		20/40 WS		167,866.8		lb		20/40			
11,441.9	5,833.5	1.0					Additive		Type		Amount		Units		Sand Size			
							Proppant		40/70 WS		3,292.0		lb		40/70			
11,575.1	5,832.3	1.0					Stg #		Start Date		Top Depth (ftKB)		Bottom Depth (ftKB)		Vol Clean Pump (bbl)		Vol Slurry (bbl)	
							21		11/28/2014		9,945.0		10,077.0		3621.80		3802.90	
11,767.1	5,830.6	1.0					Additive		Type		Amount		Units		Sand Size			
							Proppant		20/40 WS		165,170.0		lb		20/40			
11,899.9	5,817.8	1.0					Additive		Type		Amount		Units		Sand Size			
							Proppant		40/70 WS		3,090.0		lb		40/70			
12,096.1	5,816.8	1.0					Stg #		Start Date		Top Depth (ftKB)		Bottom Depth (ftKB)		Vol Clean Pump (bbl)		Vol Slurry (bbl)	
							22		11/28/2014		9,750.0		9,882.0		3528.90		3723.30	
12,227.0	5,816.8	1.0					Additive		Type		Amount		Units		Sand Size			
							Proppant		20/40 WS		177,625.5		lb		20/40			
12,418.0	5,815.0	1.0					Additive		Type		Amount		Units		Sand Size			
							Proppant		40/70 WS		2,927.0		lb		40/70			
12,549.9	5,813.8	1.0					Stg #		Start Date		Top Depth (ftKB)		Bottom Depth (ftKB)		Vol Clean Pump (bbl)		Vol Slurry (bbl)	
							23		11/28/2014		9,556.0		9,687.0		3541.10		3739.60	
12,748.0	5,812.1	1.0					Additive		Type		Amount		Units		Sand Size			
							Proppant		20/40 WS		181,089.0		lb		20/40			
12,874.0	5,811.0	1.0					Additive		Type		Amount		Units		Sand Size			
							Proppant		40/70 WS		3,255.0		lb		40/70			
13,068.9	5,809.3	1.0					Stg #		Start Date		Top Depth (ftKB)		Bottom Depth (ftKB)		Vol Clean Pump (bbl)		Vol Slurry (bbl)	
							24		11/29/2014		9,360.0		9,492.0		3482.70		3679.40	
13,201.1	5,808.1	1.0					Additive		Type		Amount		Units		Sand Size			
							Proppant		20/40 WS		179,552.3		lb		20/40			
13,394.0	5,806.4	1.0					Additive		Type		Amount		Units		Sand Size			
							Proppant		40/70 WS		3,110.0		lb		40/70			
13,525.9	5,805.3	1.0					Stg #		Start Date		Top Depth (ftKB)		Bottom Depth (ftKB)		Vol Clean Pump (bbl)		Vol Slurry (bbl)	
							25		11/29/2014		9,360.0		9,492.0		3482.70		3679.40	
13,720.1	5,804.6	1.0					Additive		Type		Amount		Units		Sand Size			
							Proppant		20/40 WS		179,552.3		lb		20/40			
13,852.0	5,802.4	1.0					Additive		Type		Amount		Units		Sand Size			
							Proppant		40/70 WS		3,110.0		lb		40/70			
14,001.3	5,801.1	1.0					Stg #		Start Date		Top Depth (ftKB)		Bottom Depth (ftKB)		Vol Clean Pump (bbl)		Vol Slurry (bbl)	
							26		11/29/2014		9,360.0		9,492.0		3482.70		3679.40	
14,059.1	5,800.6	1.0					Additive		Type		Amount		Units		Sand Size			
							Proppant		20/40 WS		179,552.3		lb		20/40			
							Additive		Type		Amount		Units		Sand Size			
							Proppant		40/70 WS		3,110.0		lb		40/70			



Lease Review  
Well Name: RAZOR 21C-0908

API Number 051233952300		WPC ID 1CO0761088		Well Permit Number		Field Name DJ Horizontal Niobrara		County Weld		State CO															
Well Configuration Type Lateral/Horizontal		Orig KB Elv (ft) 4,860.80		Ground Elevation (ft) 4,844.00		Casing Flange Elevation (ft)		Tubing Head Elevation (ft)		Total Depth (ftKB) 14,236.0															
Original Spud Date 8/8/2014		Completion Date 12/2/2014		Asset Group Redtail		Responsible Engineer Charles Ohlson		N/S Dist (ft) 329.0		N/S Ref FNL		E/W Dist (ft) 1,898.0	E/W Ref FWL												
Lot		Quarter 1 NE		Quarter 2 NW		Quarter 3		Quarter 4		Section 21		Section Suffix		Section Type	Township 10 N		Township N/S Dir		Range 58 W		Meridian				
Lateral/Horizontal - Original Hole, 3/13/2015 12:04:21 PM														Stim/Treat Stages											
MD (ftKB)		D (ft KB)		n ( )		c ( )		l ( )		Vertical schematic (actual)		Logs		Stg #		Start Date		Top Depth (ftKB)		Bottom Depth (ftKB)		Vol Clean Pump (bbl)		Vol Slurry (bbl)	
														25		11/29/2014		9,166.0		9,298.0		3547.50		3745.70	
														Additive		Type		Amount		Units		Sand Size			
														Proppant		20/40 WS		181,126.0		lb		20/40			
21.7		21.7		3.0										Additive		Type		Amount		Units		Sand Size			
1,674.9		1,683.1		1.8										Proppant		40/70 WS		2,937.0		lb		40/70			
														Stg #		Start Date		Top Depth (ftKB)		Bottom Depth (ftKB)		Vol Clean Pump (bbl)		Vol Slurry (bbl)	
														26		11/29/2014		8,969.0		9,101.0		3510.70		3708.20	
														Additive		Type		Amount		Units		Sand Size			
														Proppant		20/40 WS		180,253.3		lb		20/40			
1,830.1		1,832.5		1.8										Additive		Type		Amount		Units		Sand Size			
3,603.7		3,574.1		4.5										Proppant		40/70 WS		3,212.0		lb		40/70			
5,097.1		5,089.2		2.0										Stg #		Start Date		Top Depth (ftKB)		Bottom Depth (ftKB)		Vol Clean Pump (bbl)		Vol Slurry (bbl)	
5,132.2		5,089.2		1.8										27		11/29/2014		8,774.0		8,906.0		3380.70		3553.90	
5,287.7		5,253.8		1.8										Additive		Type		Amount		Units		Sand Size			
5,956.4		5,892.5		18.5										Proppant		20/40 WS		157,765.0		lb		20/40			
														Additive		Type		Amount		Units		Sand Size			
6,225.1		5,880.0		18.5										Proppant		40/70 WS		3,156.0		lb		40/70			
6,366.1		5,887.8		18.5										Stg #		Start Date		Top Depth (ftKB)		Bottom Depth (ftKB)		Vol Clean Pump (bbl)		Vol Slurry (bbl)	
6,498.0		5,886.5		18.5										28		11/29/2014		8,579.0		8,711.0		3531.30		3727.20	
6,691.9		5,884.8		18.5										Additive		Type		Amount		Units		Sand Size			
6,825.1		5,883.8		18.5										Proppant		20/40 WS		178,871.9		lb		20/40			
7,017.1		5,882.1		18.5										Additive		Type		Amount		Units		Sand Size			
7,149.0		5,880.9		18.5										Proppant		40/70 WS		3,114.0		lb		40/70			
7,340.9		5,893.3		18.5										Stg #		Start Date		Top Depth (ftKB)		Bottom Depth (ftKB)		Vol Clean Pump (bbl)		Vol Slurry (bbl)	
7,474.1		5,886.1		18.5										29		11/30/2014		8,383.0		8,515.0		3477.60		3639.80	
7,668.0		5,884.4		18.5										Additive		Type		Amount		Units		Sand Size			
7,799.9		5,885.3		18.5										Proppant		20/40 WS		151,753.6		lb		20/40			
7,993.1		5,883.0		18.5										Additive		Type		Amount		Units		Sand Size			
8,122.0		5,882.4		18.5										Proppant		40/70 WS		3,530.8		lb		40/70			
8,317.9		5,880.1		18.5										Stg #		Start Date		Top Depth (ftKB)		Bottom Depth (ftKB)		Vol Clean Pump (bbl)		Vol Slurry (bbl)	
8,451.1		5,886.0		18.5										30		11/30/2014		8,188.0		8,320.0		3339.70		3506.90	
8,644.0		5,887.8		18.5										Additive		Type		Amount		Units		Sand Size			
8,775.9		5,886.1		18.5										Proppant		20/40 WS		151,753.6		lb		20/40			
8,969.2		5,885.0		18.5										Additive		Type		Amount		Units		Sand Size			
9,101.0		5,883.8		18.5										Proppant		40/70 WS		3,530.8		lb		40/70			
9,295.9		5,882.3		18.5										Stg #		Start Date		Top Depth (ftKB)		Bottom Depth (ftKB)		Vol Clean Pump (bbl)		Vol Slurry (bbl)	
9,428.1		5,881.0		18.5										31		12/1/2014		7,993.0		8,122.0		3516.20		3711.50	
9,620.1		5,883.4		18.5										Additive		Type		Amount		Units		Sand Size			
9,752.0		5,884.2		18.5										Proppant		20/40 WS		178,211.0		lb		20/40			
9,944.9		5,885.5		18.5										Additive		Type		Amount		Units		Sand Size			
10,077.1		5,885.4		18.5										Proppant		40/70 WS		3,151.0		lb		40/70			
10,271.0		5,883.7		18.5										Stg #		Start Date		Top Depth (ftKB)		Bottom Depth (ftKB)		Vol Clean Pump (bbl)		Vol Slurry (bbl)	
10,402.9		5,882.5		18.5										32		12/1/2014		7,798.0		7,930.0		3572.20		3765.00	
10,589.9		5,880.9		18.5										Additive		Type		Amount		Units		Sand Size			
10,725.1		5,883.7		18.5										Proppant		20/40 WS		175,716.3		lb		20/40			
11,117.1		5,886.3		18.5										Additive		Type		Amount		Units		Sand Size			
11,249.0		5,885.3		18.5										Proppant		40/70 WS		3,393.7		lb		40/70			
11,441.9		5,883.0		18.5										Stg #		Start Date		Top Depth (ftKB)		Bottom Depth (ftKB)		Vol Clean Pump (bbl)		Vol Slurry (bbl)	
11,575.1		5,882.3		18.5										33		12/1/2014		7,603.0		7,735.0		3450.40		3605.90	
11,767.1		5,880.6		18.5										Additive		Type		Amount		Units		Sand Size			
11,899.9		5,881.5		18.5										Proppant		20/40 WS		141,093.0		lb		20/40			
12,096.1		5,887.8		18.5										Additive		Type		Amount		Units		Sand Size			
12,227.0		5,886.1		18.5										Proppant		40/70 WS		3,351.0		lb		40/70			
12,418.0		5,885.0		18.5										Stg #		Start Date		Top Depth (ftKB)		Bottom Depth (ftKB)		Vol Clean Pump (bbl)		Vol Slurry (bbl)	
12,549.9		5,883.8		18.5										34		12/1/2014		7,407.0		7,540.0		3483.60		3666.40	
12,748.0		5,882.1		18.5										Additive		Type		Amount		Units		Sand Size			
12,874.0		5,881.0		18.5										Proppant		20/40 WS		167,376.4		lb		20/40			
13,068.9		5,883.3		18.5										Additive		Type		Amount		Units		Sand Size			
13,201.1		5,886.1		18.5										Proppant		40/70 WS		2,436.9		lb		40/70			
13,394.0		5,880.4		18.5										Stg #		Start Date		Top Depth (ftKB)		Bottom Depth (ftKB)		Vol Clean Pump (bbl)		Vol Slurry (bbl)	
13,525.9		5,885.3		18.5										35		12/1/2014		7,208.0		7,343.0		3417.60		3600.80	
13,720.1		5,883.6		18.5										Additive		Type		Amount		Units		Sand Size			
13,852.0		5,882.4		18.5										Proppant		20/40 WS		166,758.0		lb		20/40			
14,001.3		5,881.1		18.5										Additive		Type		Amount		Units		Sand Size			
14,059.1		5,880.6		18.5										Proppant		40/70 WS		3,396.0		lb		40/70			
														Stg #		Start Date		Top Depth (ftKB)		Bottom Depth (ftKB)		Vol Clean Pump (bbl)		Vol Slurry (bbl)	
														36		12/2/2014		7,017.0		7,149.0		3489.90		3681.40	
														Additive		Type		Amount		Units		Sand Size			
														Proppant		20/40 WS		174,663.4		lb		20/40			
														Additive		Type		Amount		Units		Sand Size			
														Proppant		40/70 WS		3,189.0		lb		40/70			
														Stg #		Start Date		Top Depth (ftKB)		Bottom Depth (ftKB)		Vol Clean Pump (bbl)		Vol Slurry (bbl)	
														37		12/2/2014		6,823.0		6,958.0		3473.80		3668.70	
														Additive		Type		Amount		Units		Sand Size			
														Proppant		20/40 WS		178,011.0		lb		20/40			
														Additive		Type		Amount		Units		Sand Size			
														Proppant		40/70 WS		3,021.0		lb		40/70			
														Stg #		Start Date		Top Depth (ftKB)		Bottom Depth (ftKB)		Vol Clean Pump (bbl)		Vol Slurry (bbl)	
														38		12/2/2014		6,626.0		6,759.0		3475.50		3670.30	
														Additive		Type		Amount		Units		Sand Size			
														Proppant		20/40 WS		177,872.2		lb		20/40			
														Additive		Type		Amount		Units		Sand Size			
														Proppant		40/70 WS		3,059.5		lb		40/70			
														Stg #		Start Date		Top Depth (ftKB)		Bottom Depth (ftKB)		Vol Clean Pump (bbl)		Vol Slurry (bbl)	
														39		12/2/2014		6,431.0		6,563.0		3498.80		3695.40	
														Additive		Type		Amount							



Lease Review  
Well Name: RAZOR 21C-0908

API Number 051233952300		WPC ID 1CO0761088		Well Permit Number		Field Name DJ Horizontal Niobrara		County Weld		State CO					
Well Configuration Type Lateral/Horizontal		Orig KB Elv (ft) 4,860.80		Ground Elevation (ft) 4,844.00		Casing Flange Elevation (ft)		Tubing Head Elevation (ft)		Total Depth (ftKB) 14,236.0					
Original Spud Date 8/8/2014		Completion Date 12/2/2014		Asset Group Redtail		Responsible Engineer Charles Ohlson		N/S Dist (ft) 329.0		N/S Ref FNL		E/W Dist (ft) 1,898.0		E/W Ref FWL	
Lot		Quarter 1 NE	Quarter 2 NW	Quarter 3	Quarter 4	Section 21	Section Suffix	Section Type	Township 10 N	Township N/S Dir	Range 58	Range E/W Dir W	Meridian		
Lateral/Horizontal - Original Hole, 3/13/2015 12:04:22 PM							Additive Proppant		Type 40/70 WS		Amount 3,218.4	Units lb	Sand Size 40/70		
MD (ftKB)	D (ft KB)	n (ft KB)	c (ft KB)	l (ft KB)	Vertical schematic (actual)	Logs	Tubing - Production set at 5,956.5ftKB on 12/30/2014 06:00								
							Set Depth (ftKB) 5,956.5		Comment				Run Date 12/30/2014		Pull Date
								Item Des		OD (in)	ID (in)	Len (ft)	Top (ftKB)	Btm (ftKB)	
21.7		21.7		3.0				Tubing Hanger		7		0.60	8.9	9.5	
1,674.9		1,680.1		1.8				Cross Over		2 7/8		0.50	9.5	10.0	
1,830.1		1,832.5		1.9				Tubing		2 3/8	1.995	30.95	10.0	40.9	
3,603.7		3,574.1		4.5				Tubing Sub 2-8', 1-10'		2 3/8		26.00	40.9	66.9	
5,097.1		5,089.2		21.0				Tubing		2 3/8	1.995	1,763.03	66.9	1,830.0	
5,132.2		5,086.3		1.8				Gas Lift Mandrel #7		2 3/8		4.05	1,830.0	1,834.0	
5,287.7		5,253.8		1.8				Tubing		2 3/8	1.995	1,018.87	1,834.0	2,852.9	
5,956.4		5,892.5		38.5				Gas Lift Mandrel #6		2 3/8		4.05	2,852.9	2,856.9	
6,225.1		5,880.0		36.5				Tubing		2 3/8	1.995	742.83	2,856.9	3,599.8	
6,366.1		5,867.8		36.5				Gas Lift Mandrel #5		2 3/8		4.05	3,599.8	3,603.8	
6,498.0		5,866.5		36.5				Tubing		2 3/8	1.995	525.55	3,603.8	4,129.4	
6,691.9		5,864.3		36.5				Gas Lift Mandrel #4		2 3/8		4.05	4,129.4	4,133.4	
6,825.1		5,863.8		36.5				Tubing		2 3/8	1.995	554.45	4,133.4	4,687.9	
7,017.1		5,862.1		36.5				Gas Lift Mandrel #3		2 3/8		4.05	4,687.9	4,691.9	
7,149.0		5,860.9		36.5				Tubing		2 3/8	1.995	559.61	4,691.9	5,251.5	
7,340.9		5,859.3		36.5				Gas Lift Mandrel #2		2 3/8		4.05	5,251.5	5,255.6	
7,474.1		5,854.1		36.5				Tubing		2 3/8	1.995	30.92	5,255.6	5,286.5	
7,668.0		5,856.4		36.5				Cup Seating Nipple		2 3/8	1.875	1.15	5,286.5	5,287.6	
7,799.9		5,855.3		36.5				Tubing		2 3/8	1.995	590.50	5,287.6	5,878.1	
7,993.1		5,853.0		36.5				Gas Lift Mandrel		2 3/8		4.05	5,878.1	5,882.2	
8,122.0		5,852.4		36.5				Tubing		2 3/8	1.995	62.98	5,882.2	5,945.2	
8,317.9		5,850.7		36.5				ON OFF TOOL		2 3/8		1.35	5,945.2	5,946.5	
8,451.1		5,846.0		36.5				Packer		2 3/8		10.00	5,946.5	5,956.5	
Rod Strings															
Rod Description										Run Date			Pull Date		
Item Des										OD (in)	Len (ft)	Top (ftKB)	Btm (ftKB)		
Other Strings															
Set Depth (ftKB)					Comment					Run Date			Pull Date		
Item Des					OD (in)		Len (ft)			Top (ftKB)		Btm (ftKB)			
Other In Hole															
Des					OD (in)		Run Date		Pull Date		Top (ftKB)		Btm (ftKB)		
CFP					4		12/2/2014		12/27/2014		6,402.0		6,404.0		
CFP					4		12/2/2014		12/27/2014		6,577.0		6,579.0		
CFP					4		12/2/2014		12/27/2014		6,789.0		6,791.0		
CFP					4		12/2/2014		12/27/2014		6,973.0		6,975.0		
CFP					4		12/2/2014		12/27/2014		7,180.0		7,182.0		
CFP					4		12/2/2014		12/27/2014		7,380.0		7,382.0		
CFP					4		12/1/2014		12/27/2014		7,569.0		7,571.0		
CFP					4		12/1/2014		12/27/2014		7,772.0		7,774.0		
CFP					4		12/1/2014		12/27/2014		7,961.0		7,963.0		
CFP					4		11/30/2014		12/27/2014		8,142.0		8,144.0		
CFP					4		11/30/2014		12/27/2014		8,352.0		8,354.0		
CFP					4		11/30/2014		12/27/2014		8,541.0		8,543.0		
CFP					4		11/29/2014		12/27/2014		8,741.0		8,743.0		
CFP					4		11/29/2014		12/27/2014		8,920.0		8,922.0		
CFP					4		11/29/2014		12/27/2014		9,132.0		9,134.0		
CFP					4		11/29/2014		12/27/2014		9,313.0		9,315.0		
CFP					4		11/29/2014		12/27/2014		9,522.0		9,524.0		
CFP					4		11/28/2014		12/27/2014		9,713.0		9,715.0		
CFP					4		11/28/2014		12/27/2014		9,915.0		9,917.0		
CFP					4		11/28/2014		12/27/2014		10,093.0		10,095.0		
CFP					4		11/26/2014		12/27/2014		10,303.0		10,305.0		
CFP					4		11/26/2014		12/27/2014		10,485.0		10,487.0		
CFP					4		11/26/2014		12/27/2014		10,694.0		10,696.0		
CFP					4		11/25/2014		12/27/2014		10,889.0		10,891.0		
CFP					4		11/25/2014		12/27/2014		11,281.0		11,283.0		
CFP					4		11/25/2014		12/27/2014		11,458.0		11,460.0		
CFP					4		11/25/2014		12/27/2014		11,676.0		11,678.0		
CFP					4		11/24/2014		12/27/2014		11,848.0		11,850.0		
CFP					4		11/24/2014		12/27/2014		12,060.0		12,062.0		
CFP					4		11/24/2014		12/27/2014		12,242.0		12,244.0		
CFP					4		11/24/2014		12/27/2014		12,451.0		12,453.0		
CFP					4		11/23/2014		12/27/2014		12,636.0		12,638.0		
CFP					4		11/23/2014		12/27/2014		12,841.0		12,843.0		
CFP					4		11/23/2014		12/28/2014		13,029.0		13,031.0		



Page 7/7