

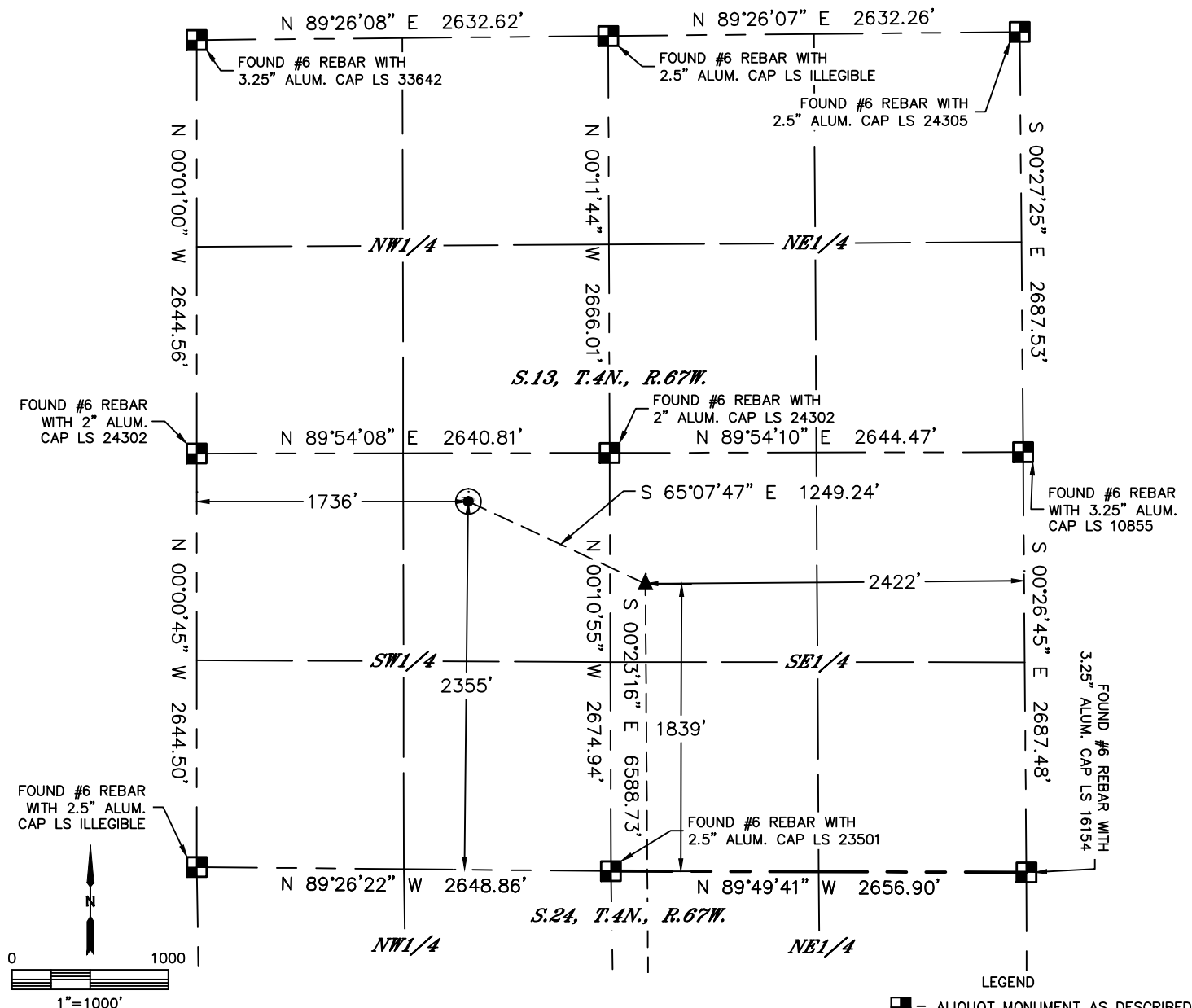


Lat40°, Inc. 6250 W. 10th Street, Unit 2, Greeley, CO 970-515-5294

# WELL LOCATION CERTIFICATE

STROH 130-223

SECTION: 13  
TOWNSHIP: 4N  
RANGE: 67W  
6TH. P.M.  
WELD COUNTY, CO



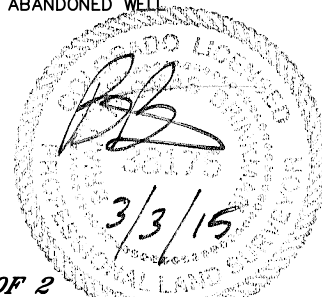
CLIENT: PDC ENERGY					LANDMAN: MAC NEUMANN				
INSTRUMENT OPERATOR: ADAM KELLY					SURVEY DATE: 1/30/2015		SURFACE USE: CROP LAND		
SHL FOOTAGE				SHL LAT °	SHL LONG °	SHL PDOP	SHL ELEV (FT.)	SHL 1/4/1/4	SHL S-T-R
2355	FSL	1736	FWL	40.31103	-104.84244	2.1	4803	NESW	13-4-67

BHL FOOTAGE				BHL LAT °	BHL LONG °	BHL S-T-R	EP LAT °	EP LONG °	EP S-T-R
500	FSL	2409	FEL	40.29148	-104.83840	24-4-67	40.30957	-104.83839	13-4-67

NOTE:  
1) Bearings shown are Grid Bearings of the Colorado State Plane Coordinate System, North Zone, North American Datum 1983. The lineal dimensions as contained herein are based upon the "U.S. Survey Foot."  
2) Distances to section lines measured at 90 degrees from said section lines.  
3) Ground elevations are based on an observed GPS elevation (NAVD 1988 DATUM).  
4) Latitude and Longitude shown are (NAD 83 DATUM).  
5) IMPROVEMENTS: See LOCATION DRAWING for all visible improvements within 500' of oil and gas location.  
6) This map does not represent a boundary survey.

NEAREST CULTURAL ITEMS	
BUILDING	±2629' NW
BUILDING UNIT	±2629' NW
HIGH OCCUPANCY BUILDING UNIT	±4798' NE
DESIGNATED OUTSIDE ACTIVITY AREA	5280'+
PUBLIC ROAD (COUNTY ROAD 23)	±1713' W
ABOVE GROUND UTILITY	±1690' W
RAILROAD	±2306' SE
PROPERTY LINE	±310' N

- LEGEND
- = ALIQUOT MONUMENT AS DESCRIBED
  - = CALCULATED POSITION
  - = SURFACE HOLE LOCATION (SHL)
  - ▲ = ENTRY POINT LOCATION (EP)
  - BH = BOTTOM HOLE LOCATION (BHL)
  - ⊕ = EXISTING WELL
  - ⊖ = ABANDONED WELL



SHEET 1 OF 2

Brian T. Brinkman—On behalf of Lat40°, Inc.  
Colorado Licensed Professional Land Surveyor No. 38175  
DATE: 3/3/2015  
PROJECT#: 2013156

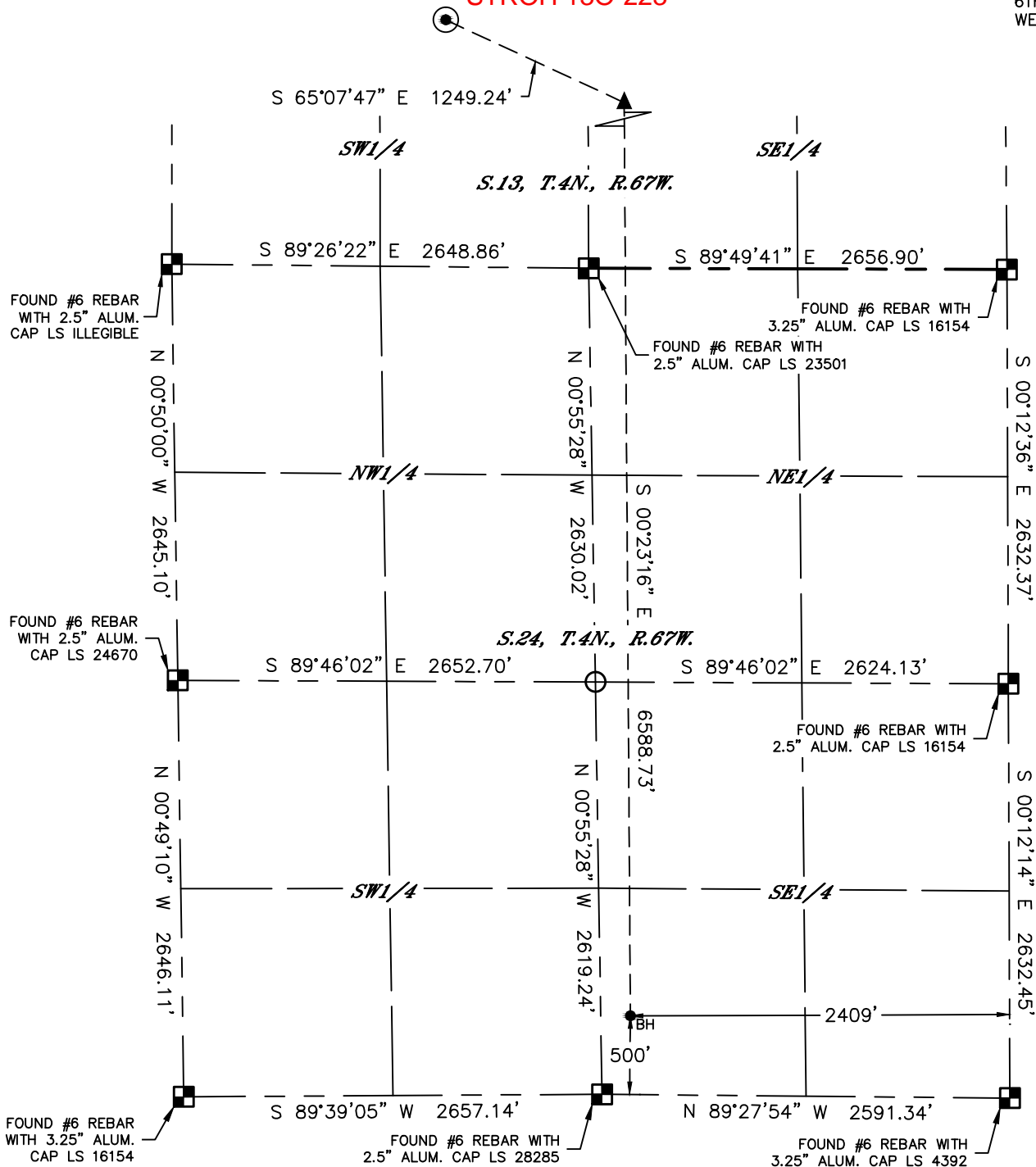


Lat40°, Inc. 6250 W. 10th Street, Unit 2, Greeley, CO 970-515-5294

# WELL LOCATION CERTIFICATE

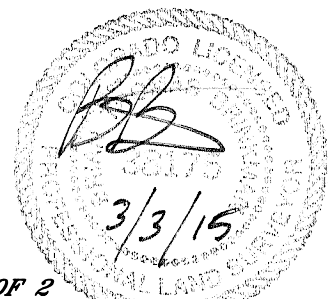
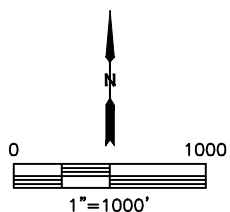
**STROH 130-223**

SECTION: 13  
TOWNSHIP: 4N  
RANGE: 67W  
6TH. P.M.  
WELD COUNTY, CO



## LEGEND

- = ALIQUOT MONUMENT AS DESCRIBED
- = CALCULATED POSITION
- = SURFACE HOLE LOCATION (SHL)
- ▲ = ENTRY POINT LOCATION (EP)
- <sub>BH</sub> = BOTTOM HOLE LOCATION (BHL)
- ⊙ = EXISTING WELL
- ⊙ = ABANDONED WELL



**SHEET 2 OF 2**

Brian T. Brinkman—On behalf of Lat40°, Inc.  
Colorado Licensed Professional Land Surveyor No. 38175  
DATE: 3/3/2015  
PROJECT#: 2013156

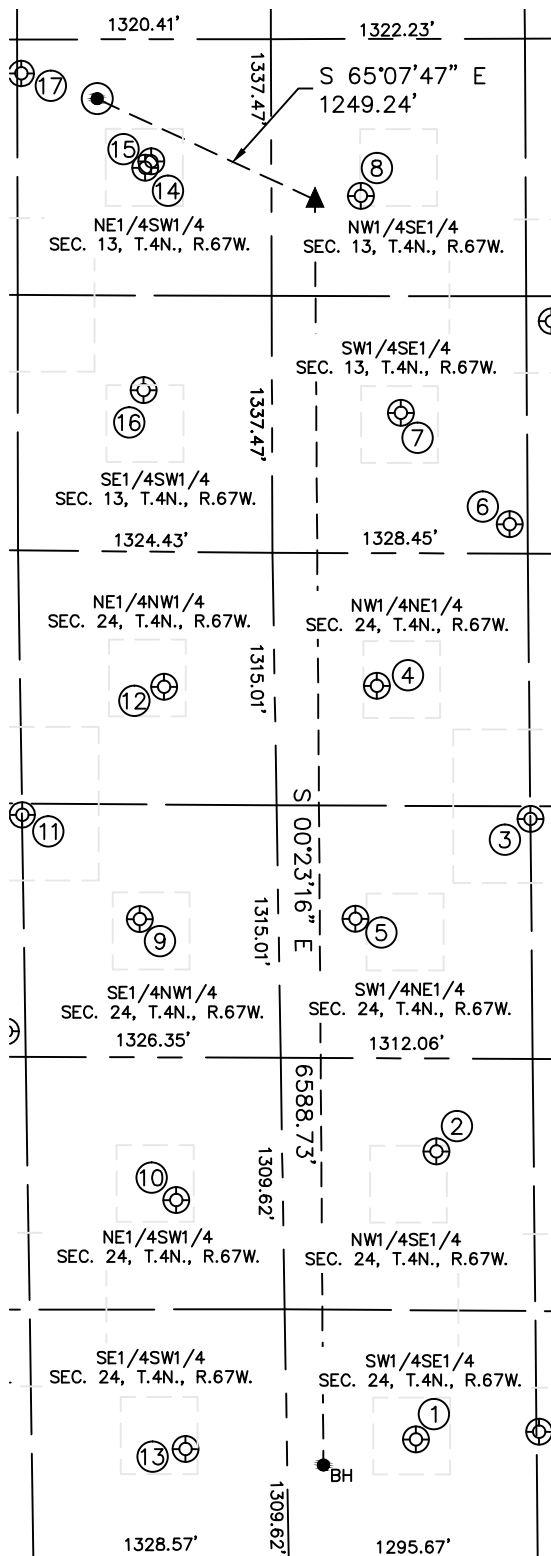


Lat40°, Inc. 6250 W. 10th Street, Unit 2, Greeley, CO 970-515-5294

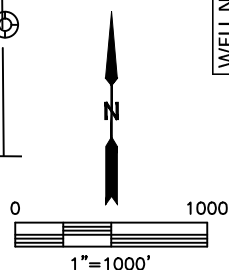
# SITE SKETCH

STROH 130-223

SECTION: 13  
TOWNSHIP: 4N  
RANGE: 67W  
6TH. P.M.  
WELD COUNTY, CO



WELL NO.	WELL NAME	SHL FOOTAGE			SHL LAT°	SHL LONG°	PDOP	ELEV (FT.)	1/4/1/4
		FSL	FSL	FEL					
1	JOHNSTON 34-24	637	1927	FEL	40.29184	-104.83667	3.1	4726	SWSE
2	ORR 33-24	2139	1816	FEL	40.29595	-104.83625	2.9	4725	NWSE
3	BERNHARDT 24C	1383	1320	FEL	40.30069	-104.83445	1.8	4721	SENE
4	JOHNNY 1	691	2117	FEL	40.30261	-104.83730	2.2	4722	NWNE
5	JENNIFER 1	1905	2233	FEL	40.29929	-104.83773	2.0	4724	SWNE
6	BERNHARDT 13T	152	1423	FEL	40.30491	-104.83480	2.4	4718	SWSE
7	BRYCE 1	731	1984	FEL	40.30651	-104.83681	1.8	4810	SWSE
8	BRINDL 1	1860	2184	FEL	40.30962	-104.83753	2.4	4779	NWSE
9	ORR 24-1	1915	1929	FEL	40.29930	-104.84175	1.8	4727	SENW
10	RORY 1	1882	2097	FEL	40.29529	-104.84111	1.6	4728	NESW
11	STROH 5	1377	1326	FEL	40.30081	-104.84393	1.5	4802	SENW
12	STROH 24-21	703	2073	FEL	40.30262	-104.84127	1.5	4749	NENW
13	JOHNSTON 1	584	2127	FEL	40.29173	-104.84097	1.9	4729	SESW
14	UPRC 13-11E	1997	1987	FEL	40.31004	-104.84155	1.7	4808	NESW
15	STROH O13-21D	2031	2017	FEL	40.31013	-104.84144	1.5	4808	NESW
16	ALLEN 1	840	1977	FEL	40.30686	-104.84161	2.0	4805	SESW
17	STROH O 13-20	2482	1342	FEL	40.31140	-104.84385	2.8	4809	NESW



DATE: 3/3/2015  
PROJECT#: 2013156