

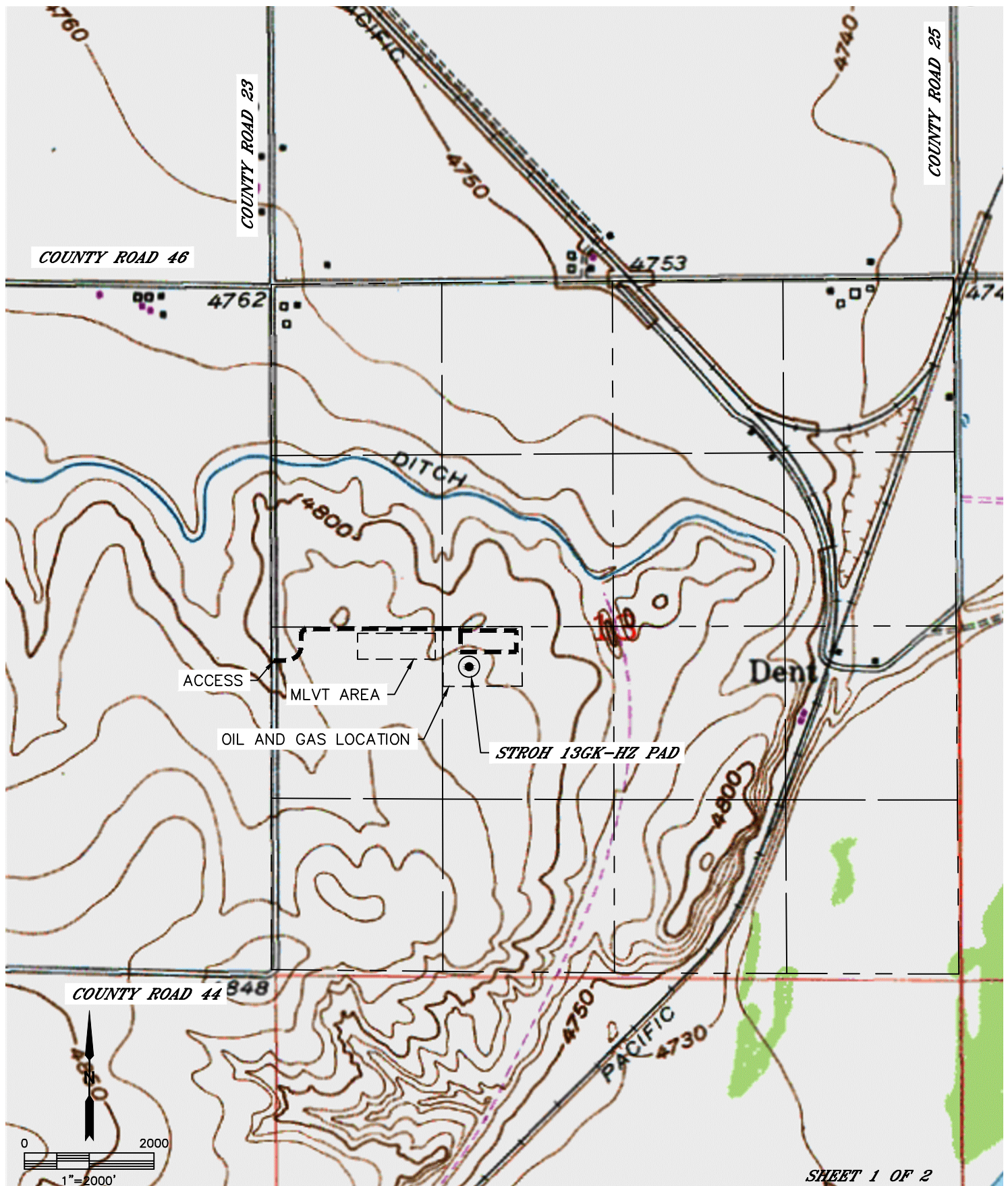


Lat40°, Inc. 1635 Foxtrail Drive, Suite 325 Loveland, CO 970-776-3321

ACCESS ROAD MAP

STROH 13GK-HZ PAD

SECTION: 13
TOWNSHIP: 4N
RANGE: 67W



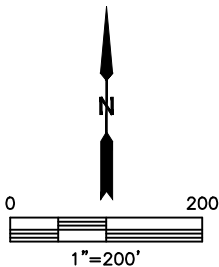
SHEET 1 OF 2

DATE: 1/29/2015
PROJECT#: 2013156



ACCESS ROAD MAP
STROH 13GK-HZ PAD

SECTION: 13
TOWNSHIP: 4N
RANGE: 67W





Lat40°, Inc. 6250 W. 10th Street, Unit 2, Greeley, CO 970-515-5294

ACCESS POINT PICTURES

STROH 13GK-HZ PAD

SECTION: 13
TOWNSHIP: 4N
RANGE: 67W

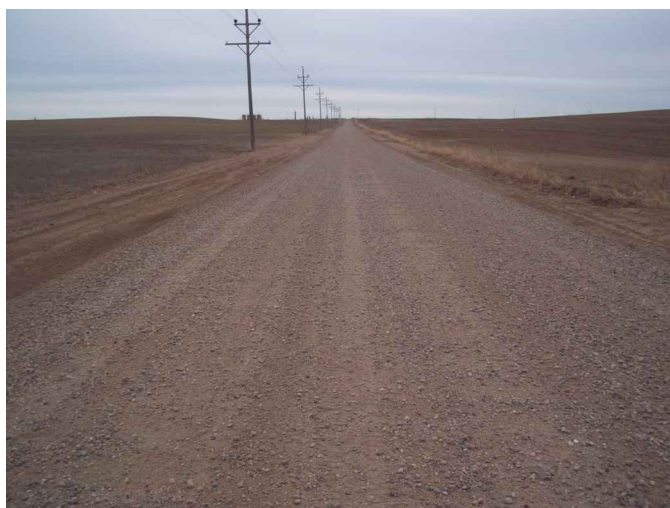
DATE: 1/30/2015



VIEW NORTH (CR 23)



VIEW EAST



VIEW SOUTH (CR 23)