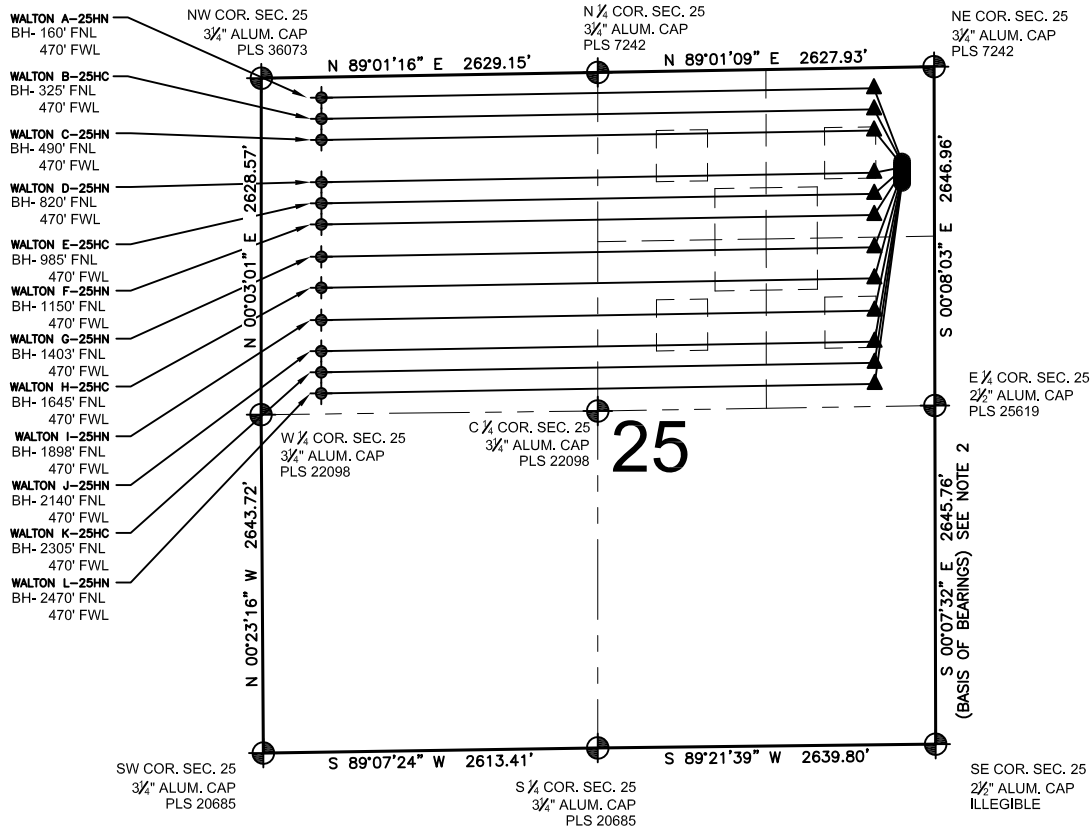


# WALTON 25-D PAD MULTI-WELL PLAN

SECTION 25, TOWNSHIP 7 NORTH, RANGE 67 WEST, 6TH P.M.



**NOTES:**

- |  |  |
|--|--|
| WALTON A-25HN TO BE AT 737' FNL, 252' FEL.<br>BOTTOM HOLE AT 160' FNL & 470' FWL.  | WALTON G-25HN TO BE AT 827' FNL, 252' FEL.<br>BOTTOM HOLE AT 1403' FNL & 470' FWL. |
| WALTON B-25HC TO BE AT 752' FNL, 252' FEL.<br>BOTTOM HOLE AT 325' FNL & 470' FWL.  | WALTON H-25HC TO BE AT 842' FNL, 252' FEL.<br>BOTTOM HOLE AT 1645' FNL & 470' FWL. |
| WALTON C-25HN TO BE AT 767' FNL, 252' FEL.<br>BOTTOM HOLE AT 490' FNL & 470' FWL.  | WALTON I-25HN TO BE AT 857' FNL, 252' FEL.<br>BOTTOM HOLE AT 1898' FNL & 470' FWL. |
| WALTON D-25HN TO BE AT 782' FNL, 252' FEL.<br>BOTTOM HOLE AT 820' FNL & 470' FWL.  | WALTON J-25HN TO BE AT 872' FNL, 252' FEL.<br>BOTTOM HOLE AT 2140' FNL & 470' FWL. |
| WALTON E-25HC TO BE AT 797' FNL, 252' FEL.<br>BOTTOM HOLE AT 985' FNL & 470' FWL.  | WALTON K-25HC TO BE AT 887' FNL, 252' FEL.<br>BOTTOM HOLE AT 2305' FNL & 470' FWL. |
| WALTON F-25HN TO BE AT 812' FNL, 252' FEL.<br>BOTTOM HOLE AT 1150' FNL & 470' FWL. | WALTON L-25HN TO BE AT 902' FNL, 252' FEL.<br>BOTTOM HOLE AT 2470' FNL & 470' FWL. |

**NOTES:**

1. THIS FIELD SURVEY CONFORMS TO THE MINIMUM STANDARDS SET BY THE C.O.G.C.C., RULE NO. 215
2. BEARINGS AND DISTANCE SHOWN HEREON ARE GRID AND BASED ON THE COLORADO STATE PLANE COORDINATE SYSTEM, NAD 83/2011 BETWEEN MONUMENTS AS LABELED HEREON AND ELEVATIONS SHOWN ARE NAVD 88, AS DERIVED BY GPS OBSERVATIONS.
3. GRID DISTANCES ARE SHOWN, AS MEASURED IN THE FIELD, WITH TIES TO WELLS MEASURED PERPENDICULAR TO SECTION LINES.

**LEGEND**

- ⊕ = EXISTING MONUMENT
- = PROPOSED WELL
- ◆ = EXISTING WELL
- ⊙ = BOTTOM HOLE
- ▲ = LANDING POINT
- LP = LANDING POINT
- BH = BOTTOM HOLE

PREPARED BY:



BAYSWATER EXPLORATION & PRODUCTION, LLC

FIELD DATE: 12-12-14	PAD NAME: WALTON 25-D PAD
DRAWING DATE: 01-12-15	SURFACE LOCATION: NE 1/4 NE 1/4, SEC. 25, T7N, R67W, 6TH P.M.
BY: MDCA	CHECKED: KAD
WELD COUNTY, COLORADO	

