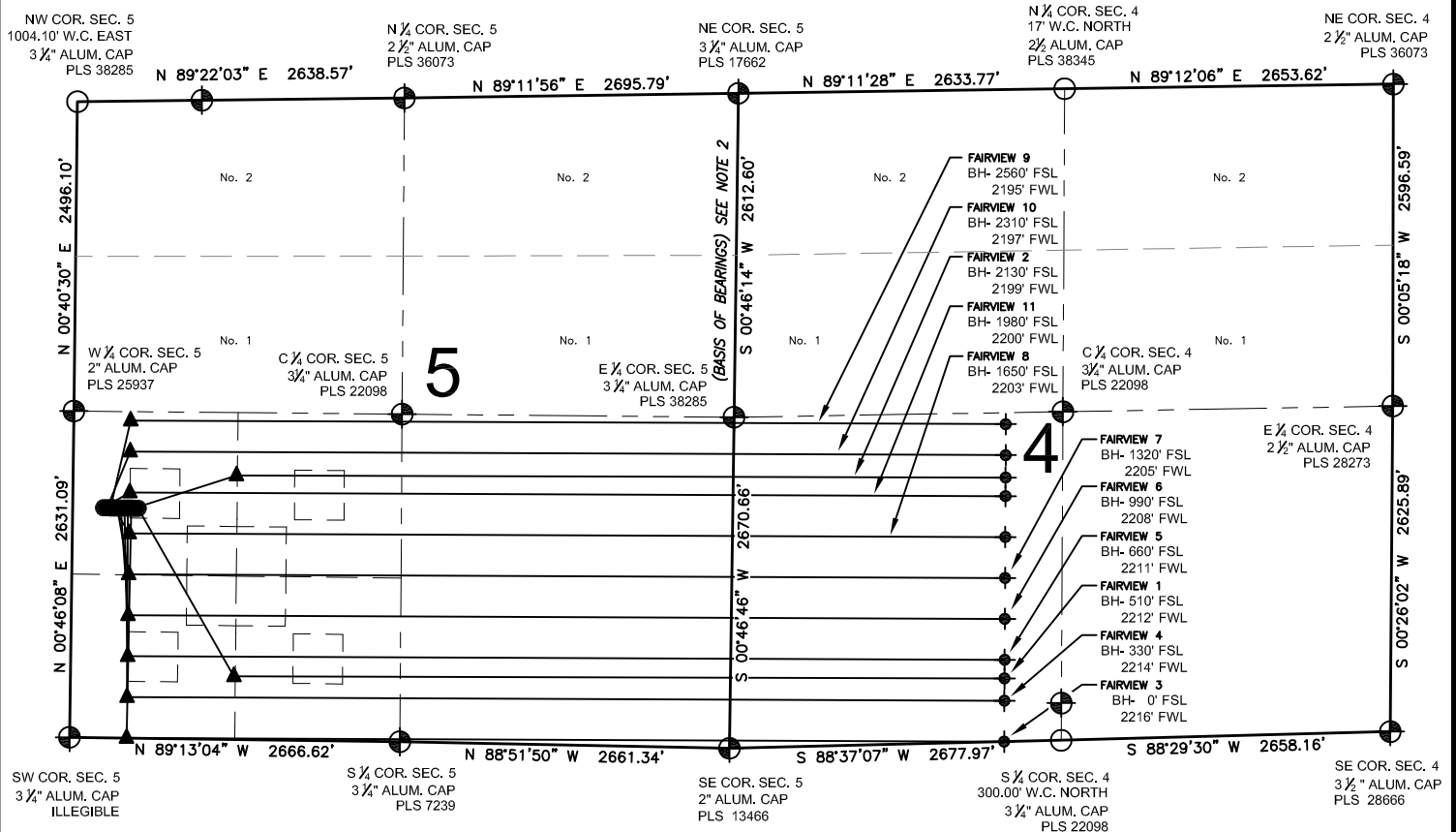


# FAIRVIEW 5-I PAD MULTI-WELL PLAN

SECTION 4 & 5, TOWNSHIP 2 NORTH, RANGE 68 WEST, 6TH P.M.



## LEGEND

- = EXISTING MONUMENT
- = CALCULATED POSITION
- = PROPOSED WELL
- ◆ = EXISTING WELL
- ◆ = BOTTOM HOLE
- ▲ = LANDING POINT
- LP = LANDING POINT
- BH = BOTTOM HOLE

## NOTES:

- THIS FIELD SURVEY CONFORMS TO THE MINIMUM STANDARDS SET BY THE C.O.G.C.C., RULE NO. 215
- BEARINGS AND DISTANCE SHOWN HEREON ARE GRID AND BASED ON THE COLORADO STATE PLANE COORDINATE SYSTEM, NAD 83/2011 BETWEEN MONUMENTS AS LABELED HEREON AND ELEVATIONS SHOWN ARE NAVD 88, AS DERIVED BY GPS OBSERVATIONS.
- GRID DISTANCES ARE SHOWN, AS MEASURED IN THE FIELD, WITH TIES TO WELLS MEASURED PERPENDICULAR TO SECTION LINES.

## NOTES:

- FAIRVIEW 1 TO BE AT 1855' FSL, 530' FWL.  
 BOTTOM HOLE AT 510' FSL & 2212' FWL, SEC. 4.  
 FAIRVIEW 2 TO BE AT 1855' FSL, 502' FWL.  
 BOTTOM HOLE AT 2130' FSL & 2199' FWL, SEC. 4.  
 FAIRVIEW 3 TO BE AT 1855' FSL, 474' FWL.  
 BOTTOM HOLE AT 0' FSL & 2216' FWL, SEC. 4.  
 FAIRVIEW 4 TO BE AT 1855' FSL, 446' FWL.  
 BOTTOM HOLE AT 330' FSL & 2214' FWL, SEC. 4.  
 FAIRVIEW 5 TO BE AT 1855' FSL, 418' FWL.  
 BOTTOM HOLE AT 660' FSL & 2211' FWL, SEC. 4.  
 FAIRVIEW 6 TO BE AT 1855' FSL, 390' FWL.  
 BOTTOM HOLE AT 990' FSL & 2208' FWL, SEC. 4.  
 FAIRVIEW 7 TO BE AT 1855' FSL, 362' FWL.  
 BOTTOM HOLE AT 1320' FSL & 2205' FWL, SEC. 4.  
 FAIRVIEW 8 TO BE AT 1855' FSL, 334' FWL.  
 BOTTOM HOLE AT 1650' FSL & 2203' FWL, SEC. 4.  
 FAIRVIEW 9 TO BE AT 1855' FSL, 306' FWL.  
 BOTTOM HOLE AT 2560' FSL & 2195' FWL, SEC. 4.

- FAIRVIEW 10 TO BE AT 1855' FSL, 278' FWL.  
 BOTTOM HOLE AT 2310' FSL & 2197' FWL, SEC. 4.  
 FAIRVIEW 11 TO BE AT 1855' FSL, 250' FWL.  
 BOTTOM HOLE AT 1980' FSL & 2200' FWL, SEC. 4.

PREPARED BY:



## EXTRACTION OIL & GAS

FIELD DATE: 07-26-14	PAD NAME: FAIRVIEW 5-I PAD
DRAWING DATE: 11-05-14	SURFACE LOCATION: NW 1/4 SW 1/4, SEC. 5, T2N, R68W, 6TH P.M.
BY: MDCA	CHECKED: WDW
	WELD COUNTY, COLORADO

