



# RADIAL CEMENT BOND LOG GAMMA RAY CCL

Company Kerr McGee Oil & Gas  
Well HSR SPILMAN 9-35  
Field Wattenberg  
County Weld State CO

Location: API # : 05-123-17025 Other Services

NE/SE  
LAT: 40.26660 LONG: -104.73710  
SEC 35 TWP 4N RGE 66W

Permanent Datum GL Elevation 4823'  
Log Measured From KB: 10'  
Drilling Measured From KB Elevation KB, 4833'  
D.F. 4832'  
G.L. 4823'

Date 12-15-14

Run Number ONE  
Depth Driller 7905'  
Depth Logger 5510'  
Bottom Logged Interval 5507'  
Top Log Interval Surface  
Open Hole Size 7 7/8  
Type Fluid WATER  
Density / Viscosity 1.0  
Max. Recorded Temp. 172  
Estimated Cement Top 266'  
Time Well Ready NA  
Time Logger on Bottom NA  
Equipment Number 7770  
Location GREELEY  
Recorded By A.STEERMAN  
Witnessed By SOCORRO

Borehole Record  
Run Number Bit From To Size Weight From To

Casing Record  
Surface String 8 5/8 Wgt/Ft 24# Top 0 Bottom 430'  
Prot. String  
Production String 4 1/2 11.6# 0 7422'

Liner

<<< Fold Here >>>

All interpretations are opinions based on inferences from electrical or other measurements and we cannot and do not guarantee the accuracy or correctness of any interpretation, and we shall not, except in the case of gross or willful negligence on our part, be liable or responsible for any loss, costs, damages, or expenses incurred or sustained by anyone resulting from any interpretation made by any of our officers, agents or employees. These interpretations are also subject to our general terms and conditions set out in our current Price Schedule.

## Comments

NOT CORROLATED  
RAN CBL TO VERIFY CEMENT.

THANK YOU FOR USING WARRIOR ENERGY!

Sensor	Offset (ft)	Schematic	Description	Len (ft)	OD (in)	Wt (lb)

Tool Joint	Tool Joint Length (ft)	Tool Joint Weight (lb)	Tool Joint O.D. (in)	Tool Joint Description	Tool Joint Length (ft)	Tool Joint Weight (lb)	Tool Joint O.D. (in)	Tool Joint Description
CENT #2 -Probe (PTS_MONO)	2.75	2.75	35.00					
HEADVOLT	16.00							
IntTemp	14.58							
WVFS3FT	11.33							
WVFCAL	11.33							
WVFS1	11.33							
WVFS2	11.33							
WVFS3	11.33							
WVFS4	11.33							
WVFS5	11.33							
WVFS6	11.33							
WVFS7	11.33							
WVFS8	11.33							
WVF5FT	10.33							
CCL	3.64							
GR	0.90							
GR-Probe (275)	4.33	2.75	30.00	Probe 2.75"				
CENT-Probe (PT_MONO2)	2.75	2.75	35.00					
RBT-Probe (Base)	8.92	2.75	90.00	Probe Radlii Bond Tool with Digital Telemetry				

Dataset:

hsr\_spilman 9-35.db: field/well/run1/pass3

Total Length:


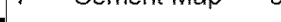
18.75 ft

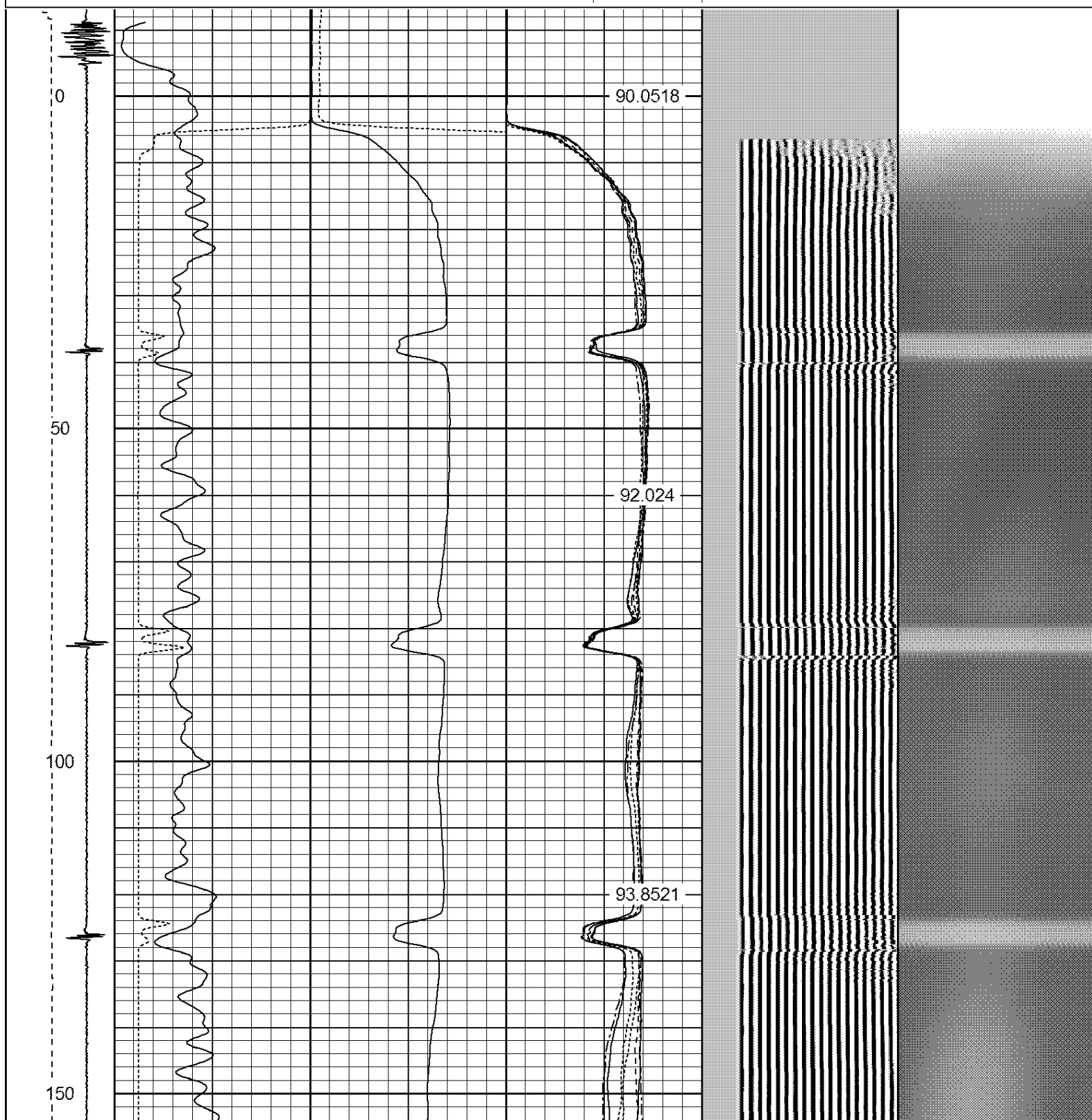
Total Weight:

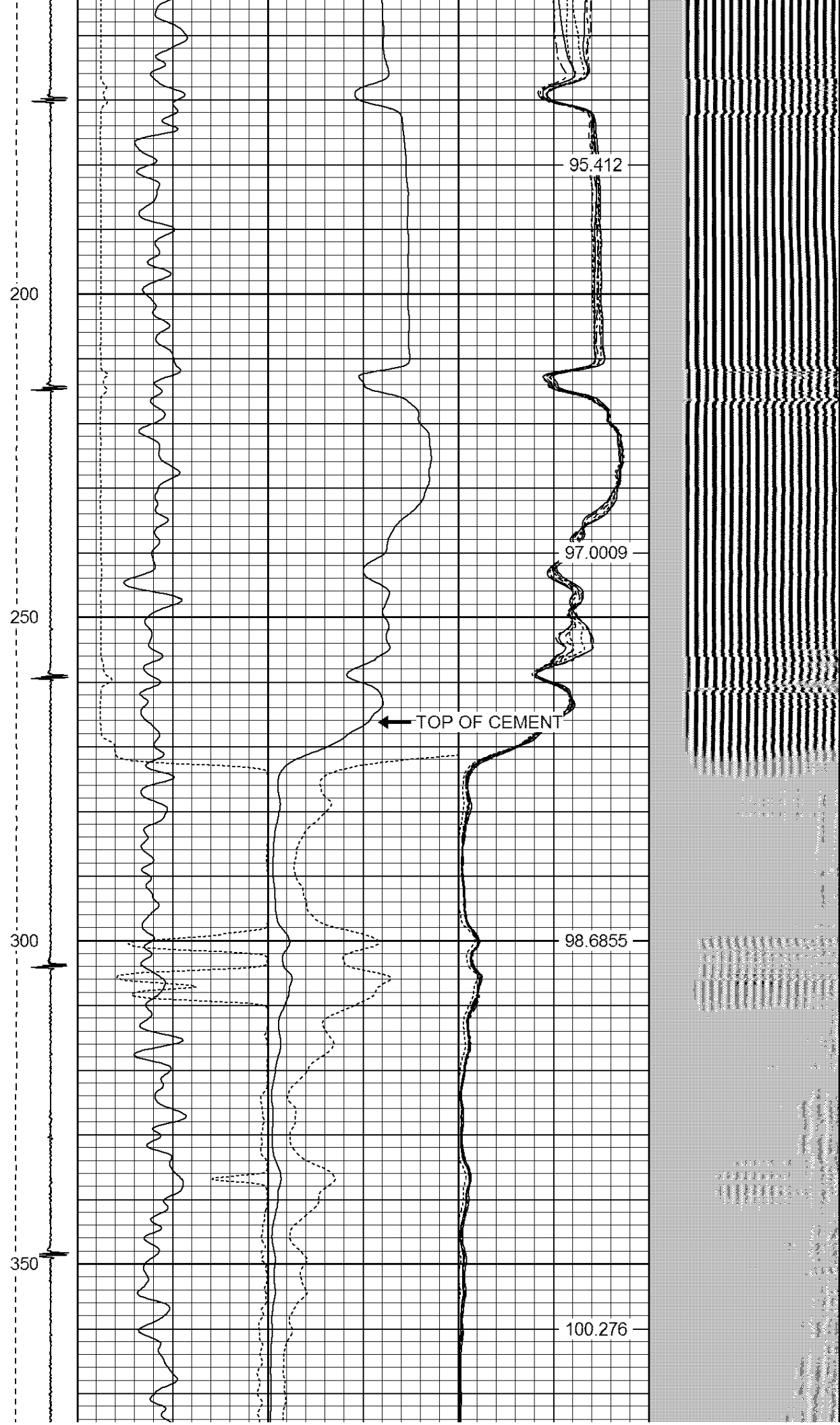
190.00 lb

O.D.

2.75 in

-9	CCL	3	200	TT (usec)	800	0	AMP (mV)	100	0	AMPS1	100	200	VDL	1200	1	Cement Map	8	
LSPD (ft/min)	0	-250	0	GR (GAPI)	200	0	AMPx5 (mV)	20	0	AMPS2	100		1					
			200	GR (GAPI)	400		0	AMPS4	100									
						0	AMPS5	100										
						0	AMPS6	100										
						0	AMPS7	100										
						0	AMPS8	100										
											IntTemp (degF)							





400

450

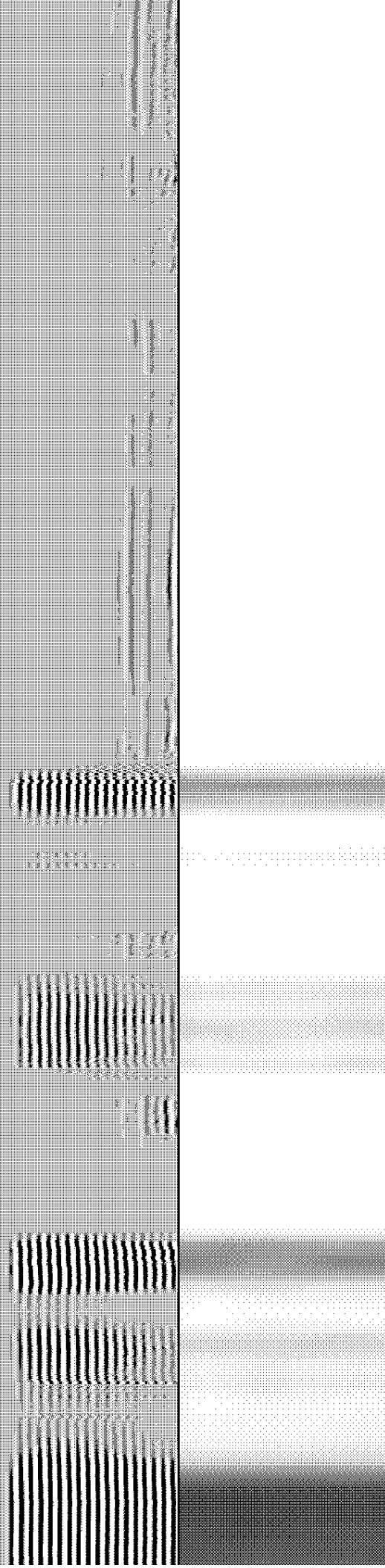
500

550

101.995

103.6

104.894



600

106.223

650

107.53

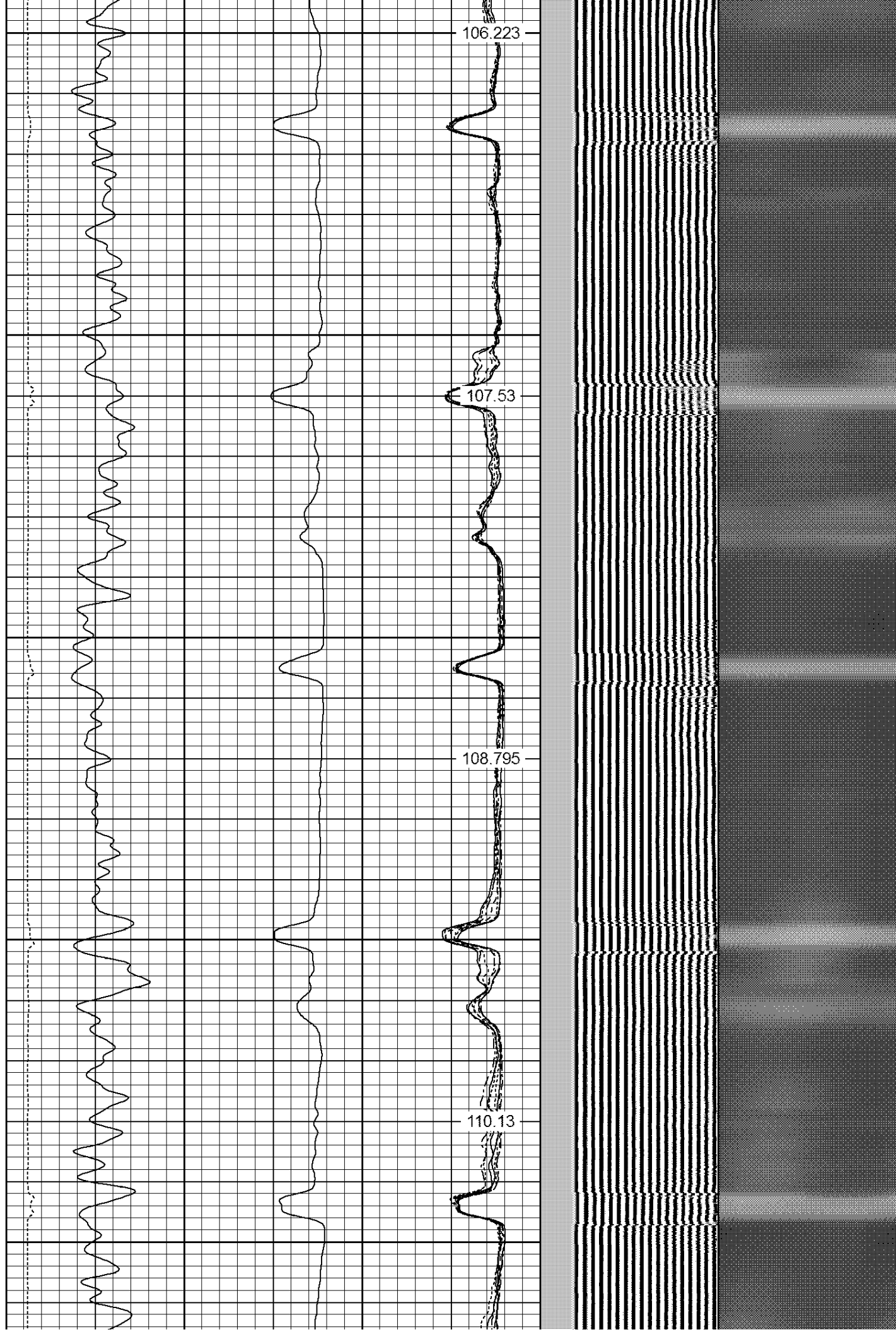
700

108.795

750

110.13

800





850

900

950

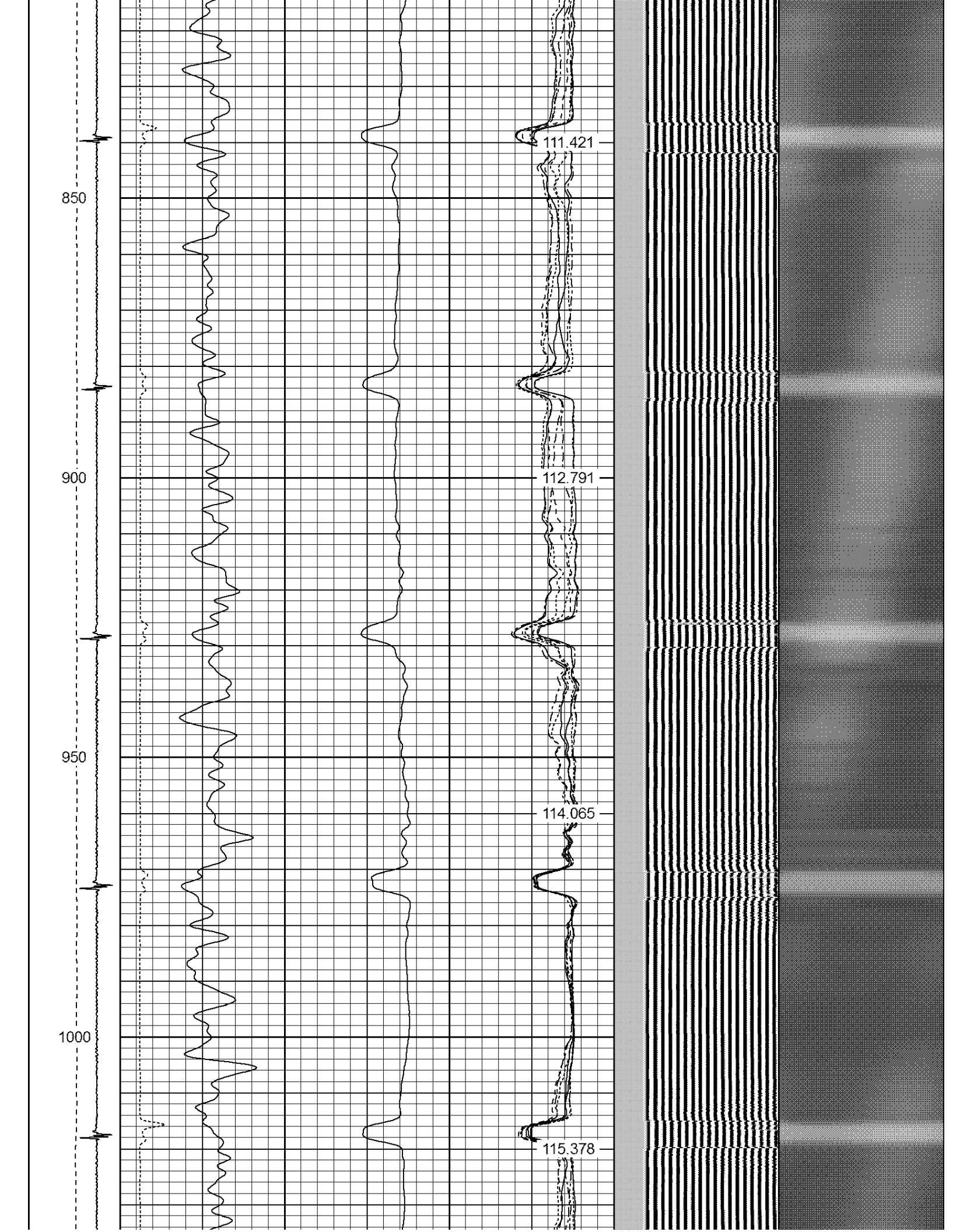
1000

111.421

112.791

114.065

115.378



1050

1100

1150

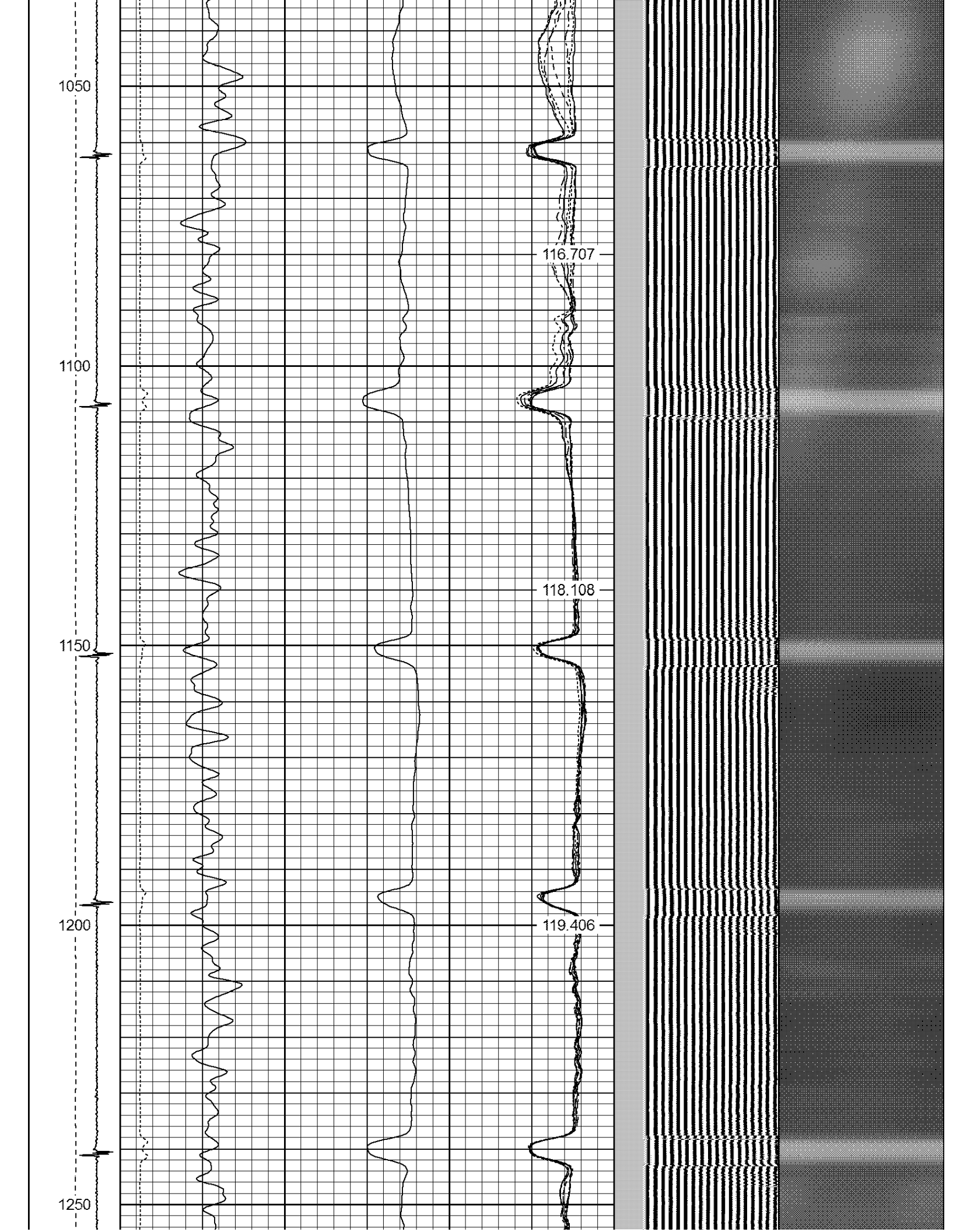
1200

1250

116.707

118.108

119.406





1300

1350

1400

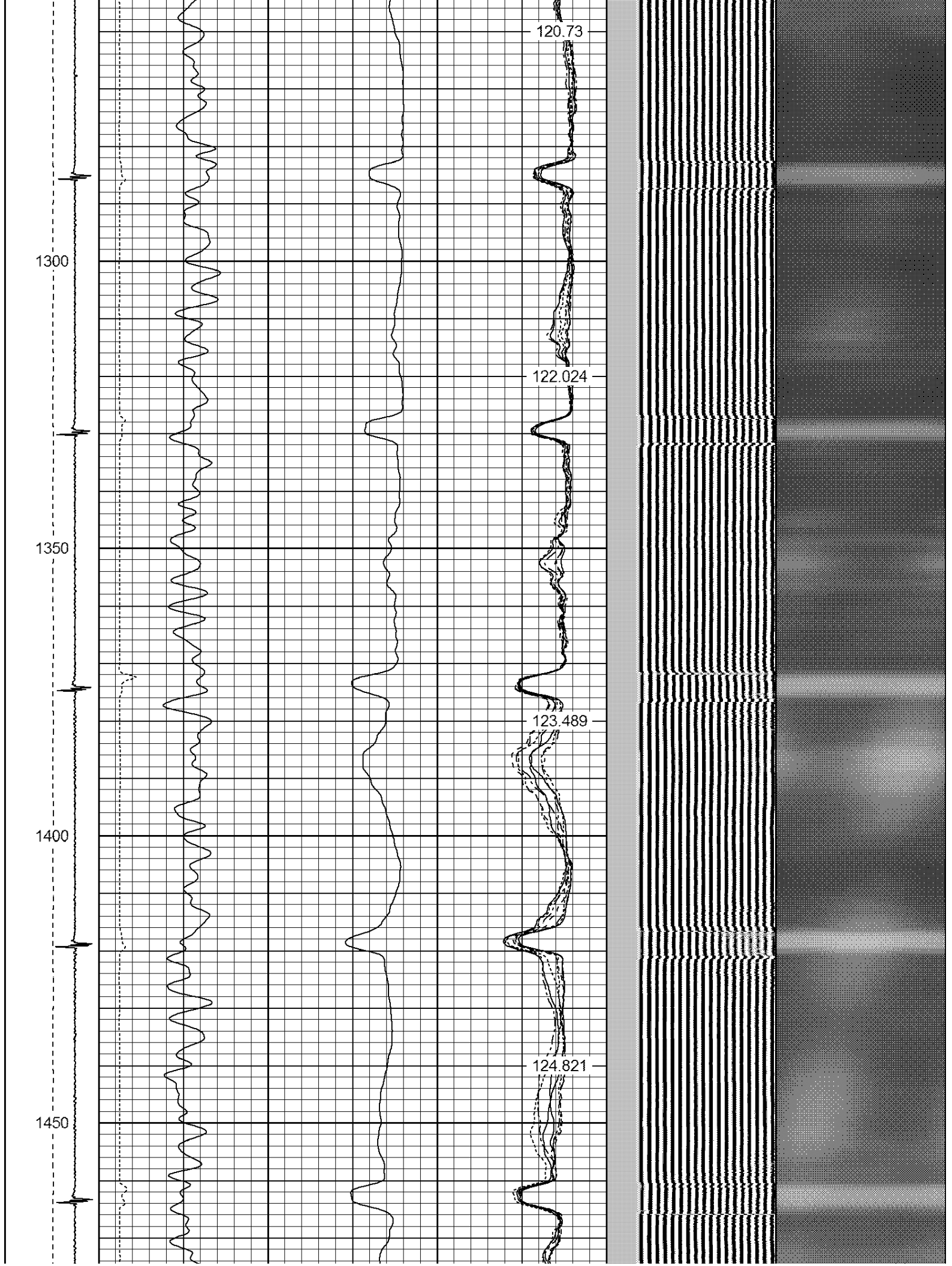
1450

120.73

122.024

123.489

124.821



1500

1550

1600

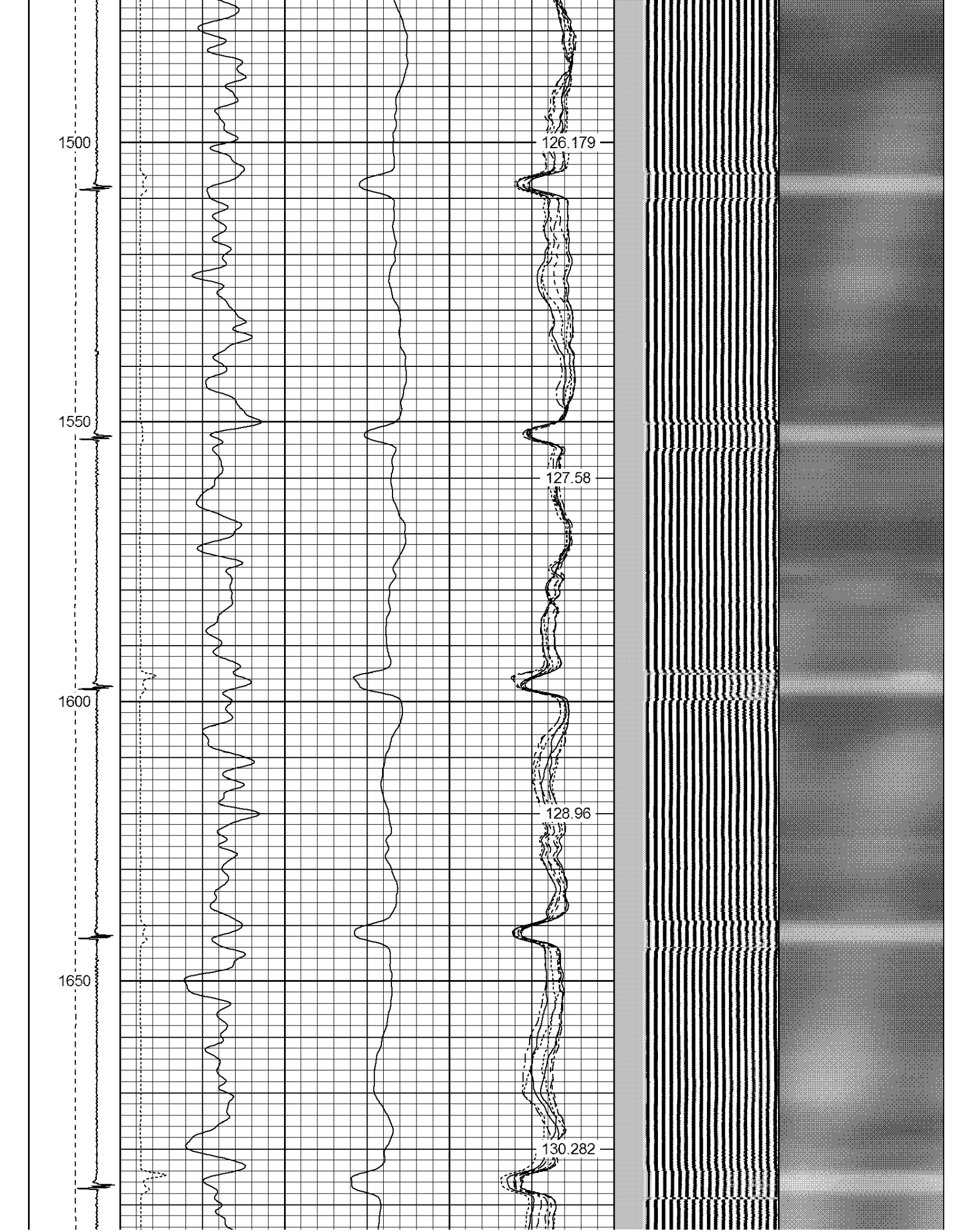
1650

126.179

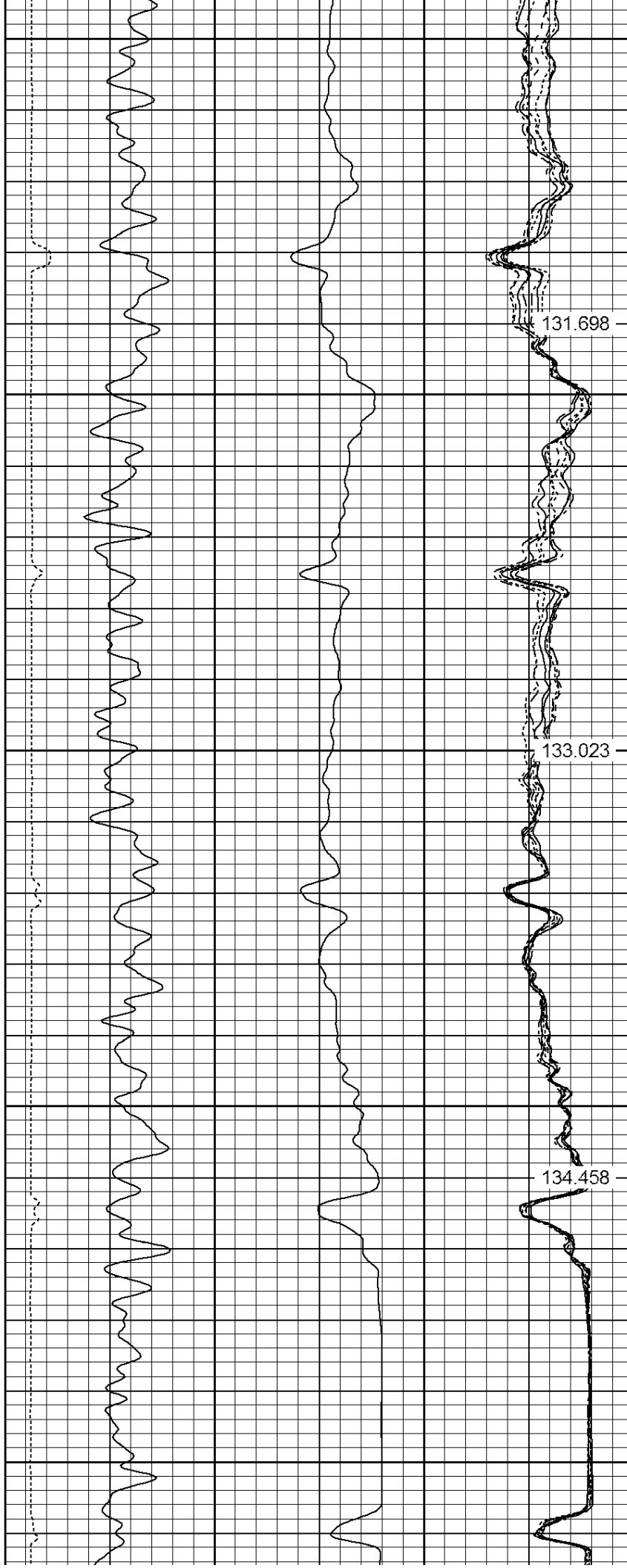
127.58

128.96

130.282



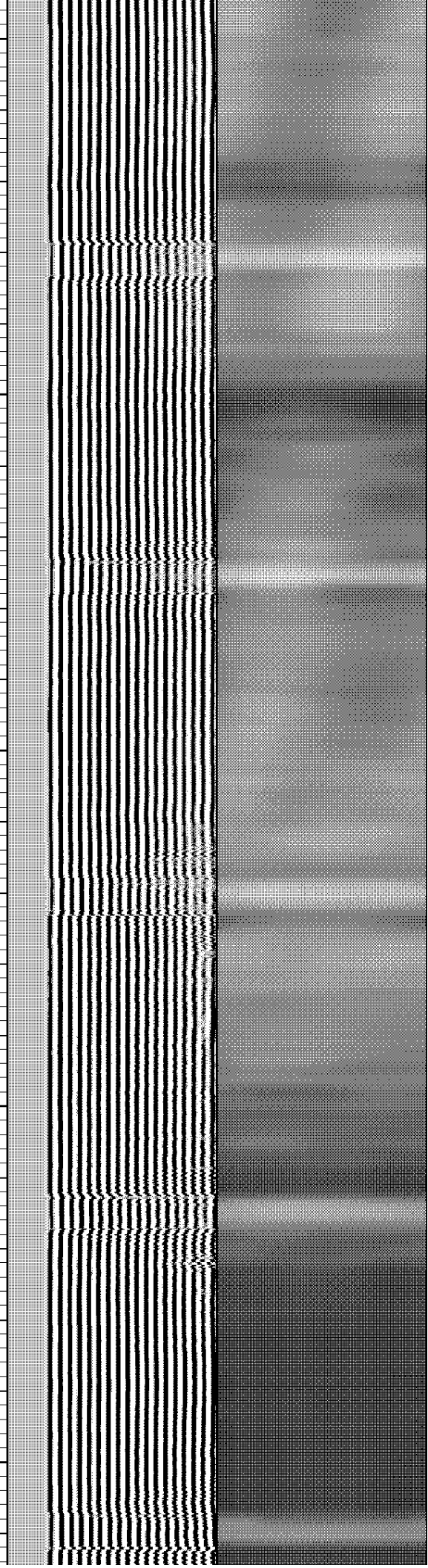
1700  
1750  
1800  
1850  
1900



131.698

133.023

134.458



1950

2000

2050

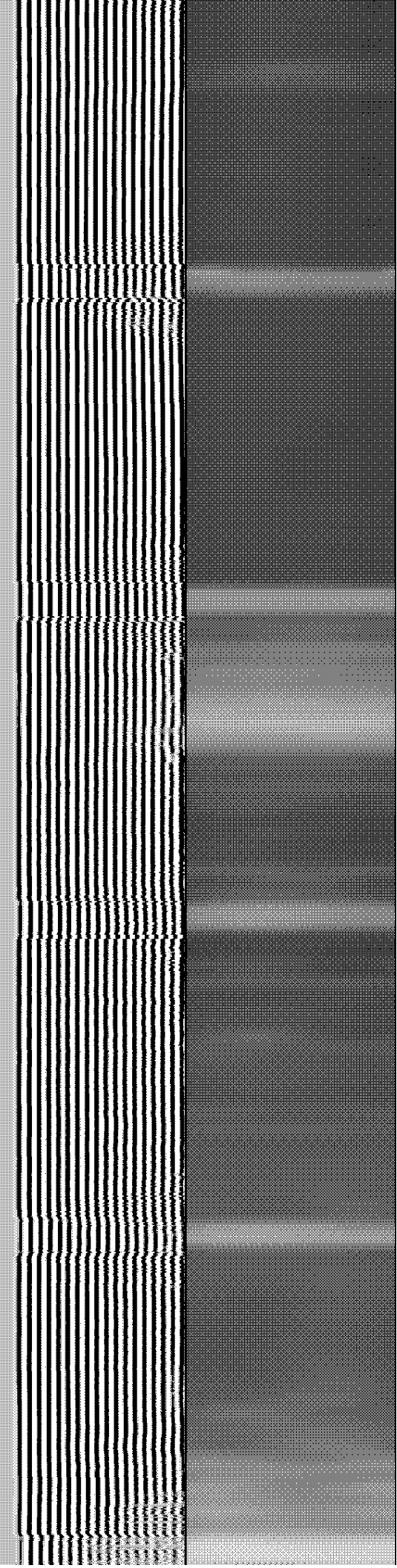
2100

135.769

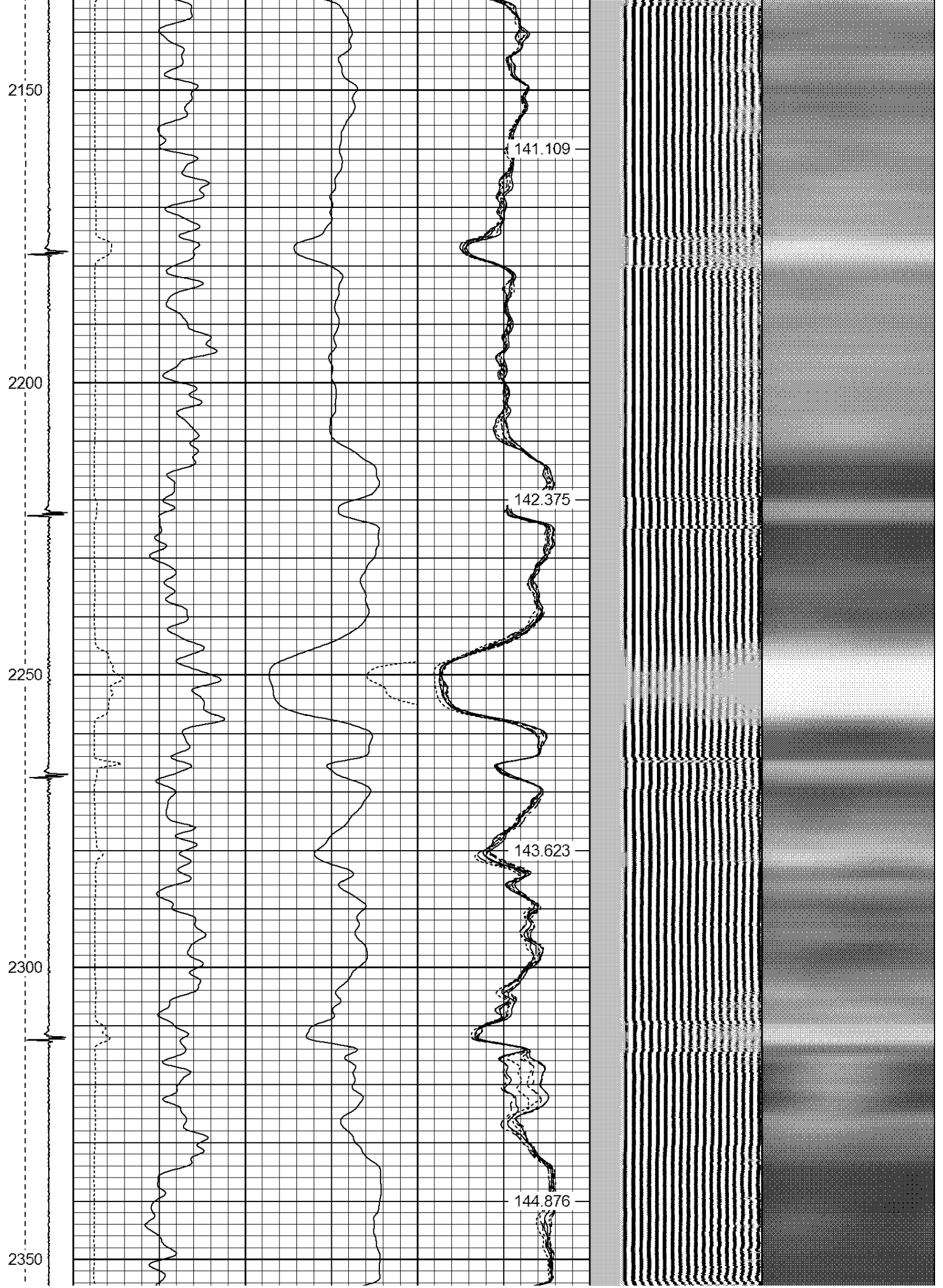
137.138

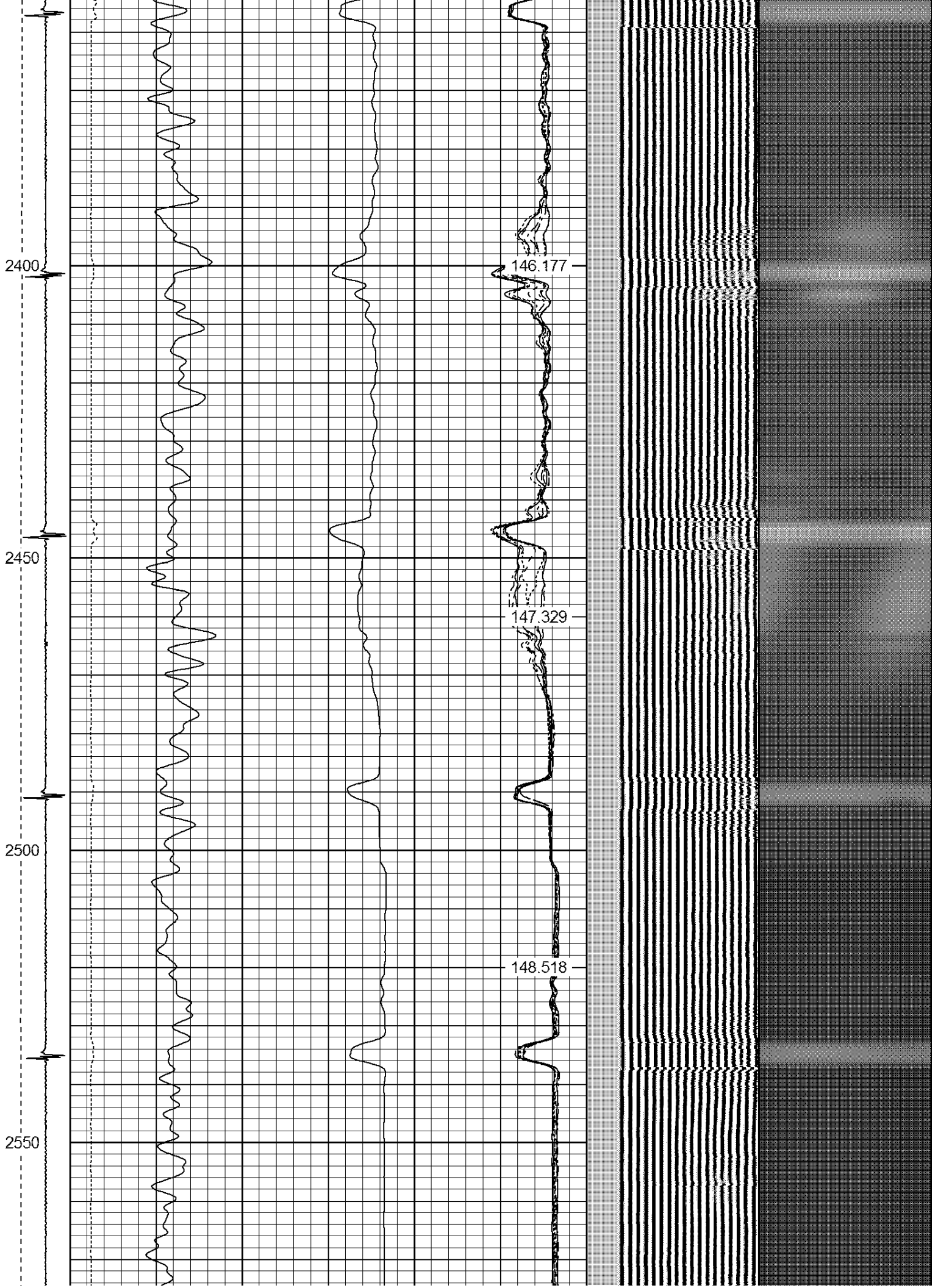
138.551

139.798

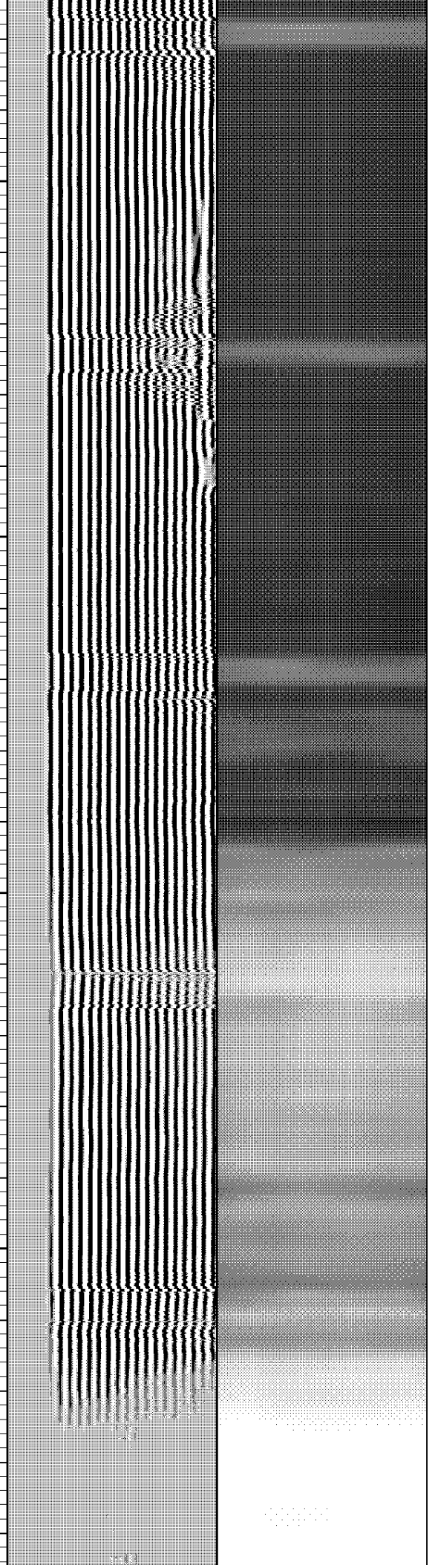
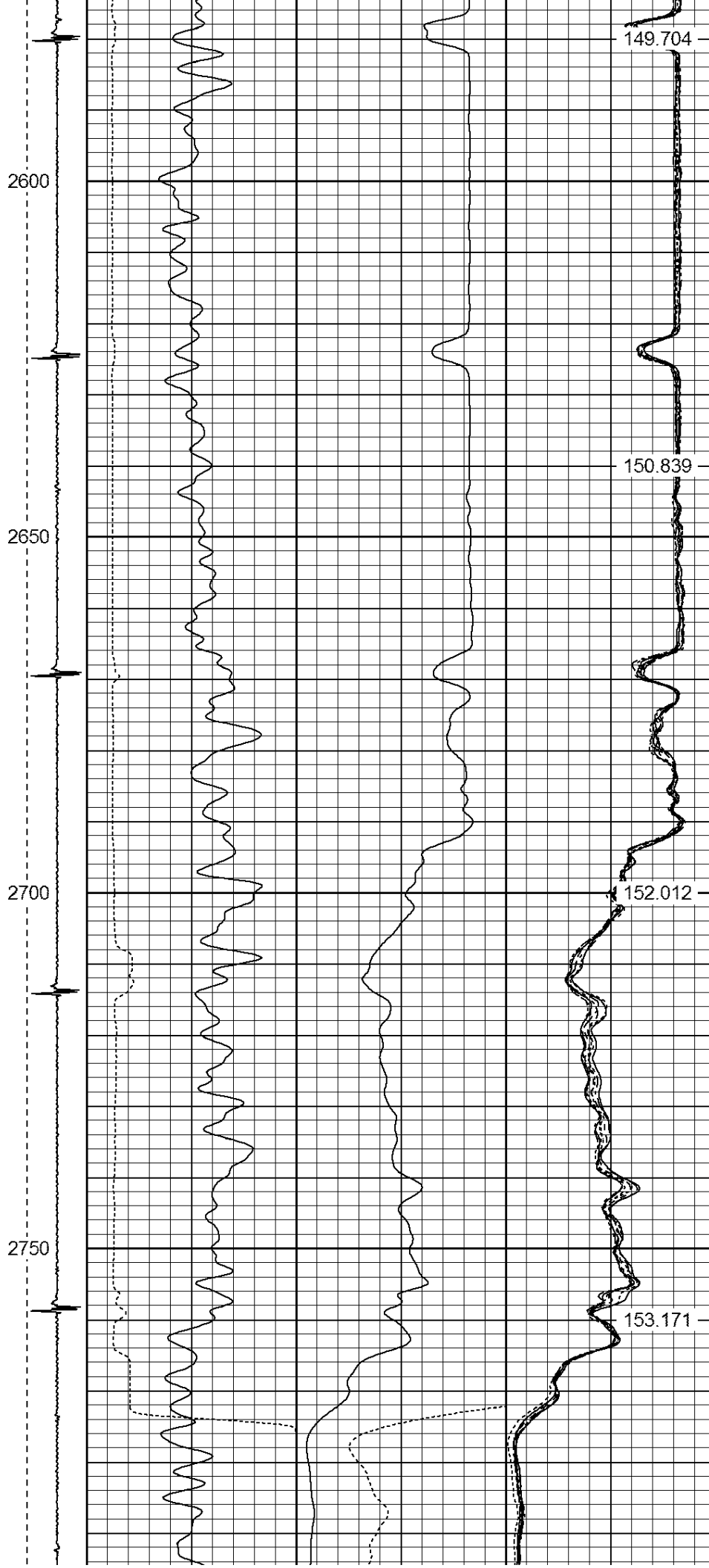












2800

2850

2900

2950

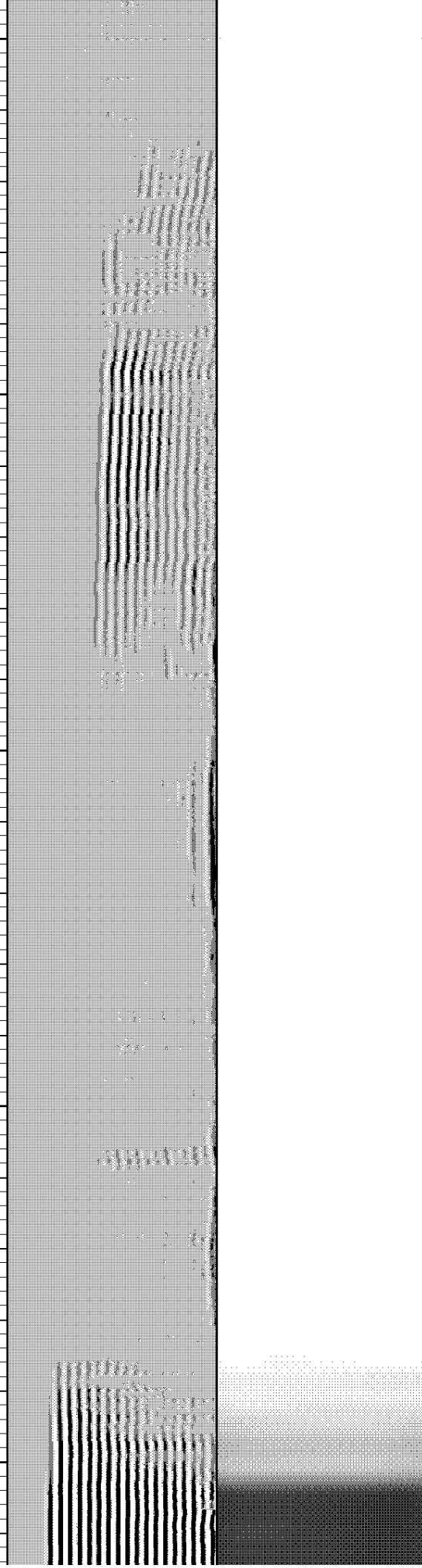
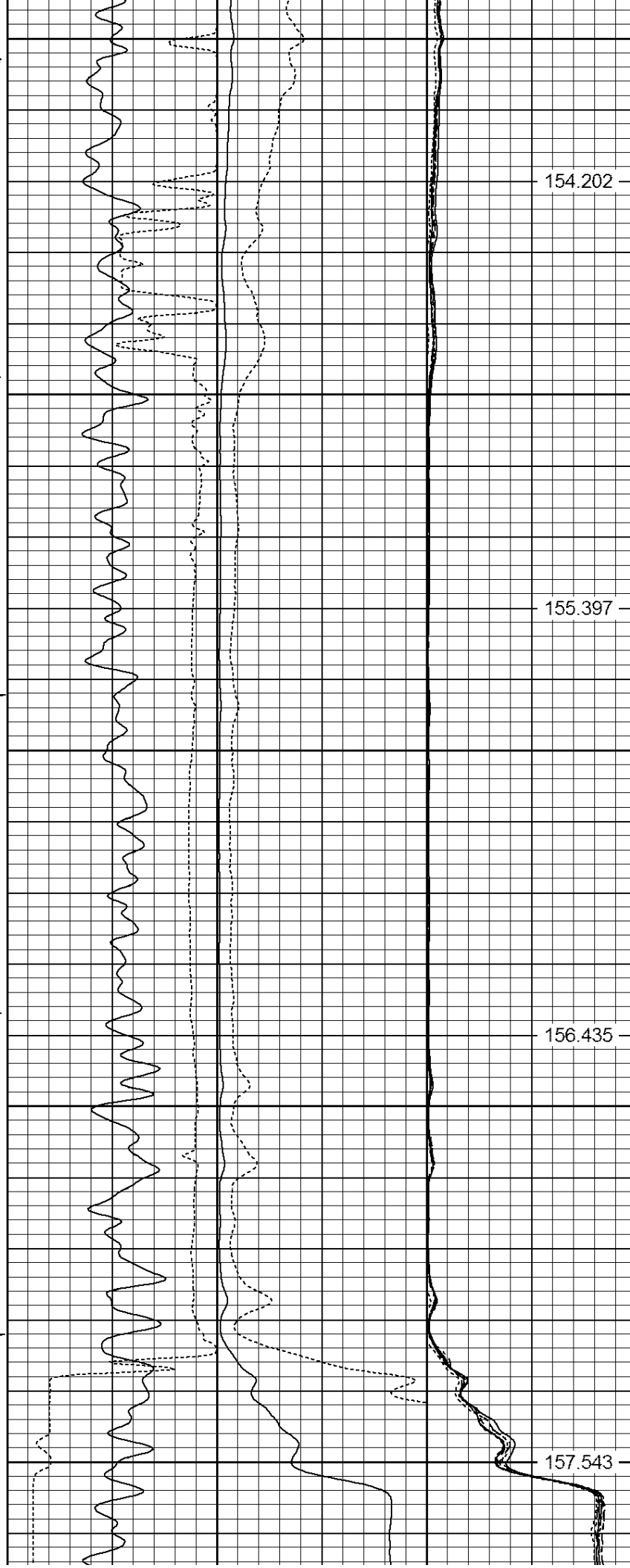
3000

154.202

155.397

156.435

157.543



3050

3100

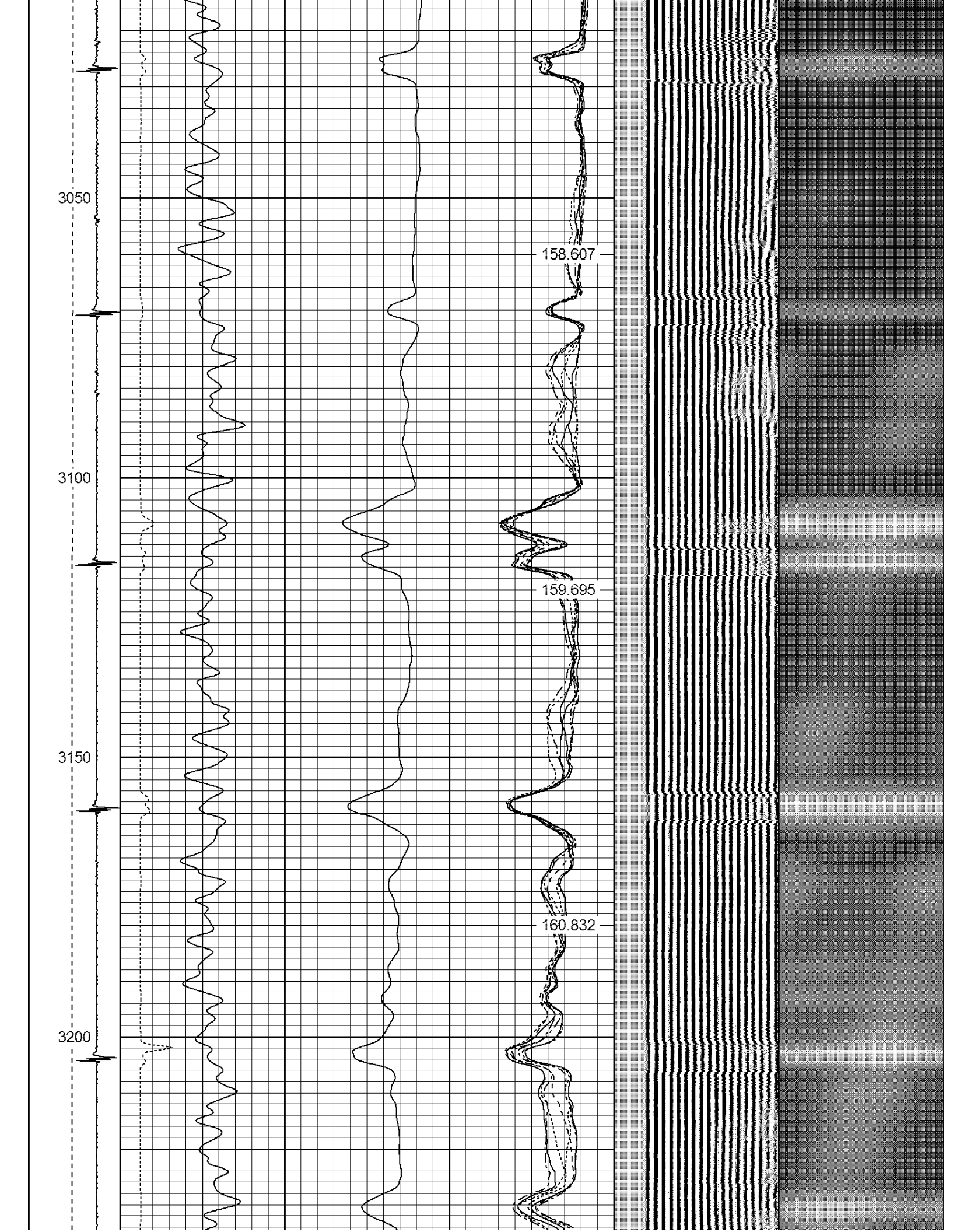
3150

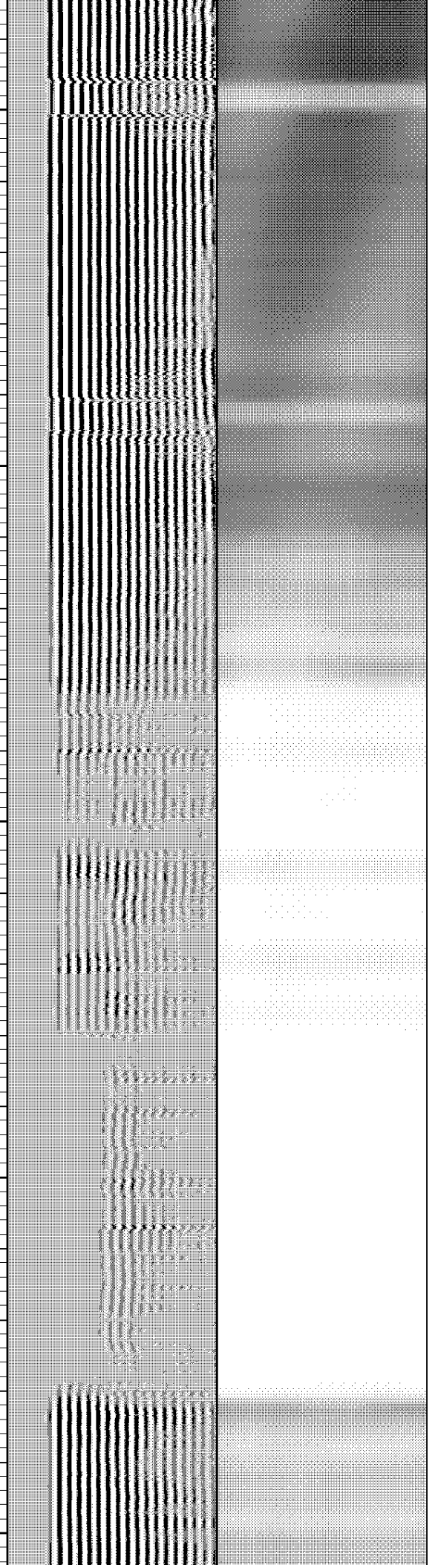
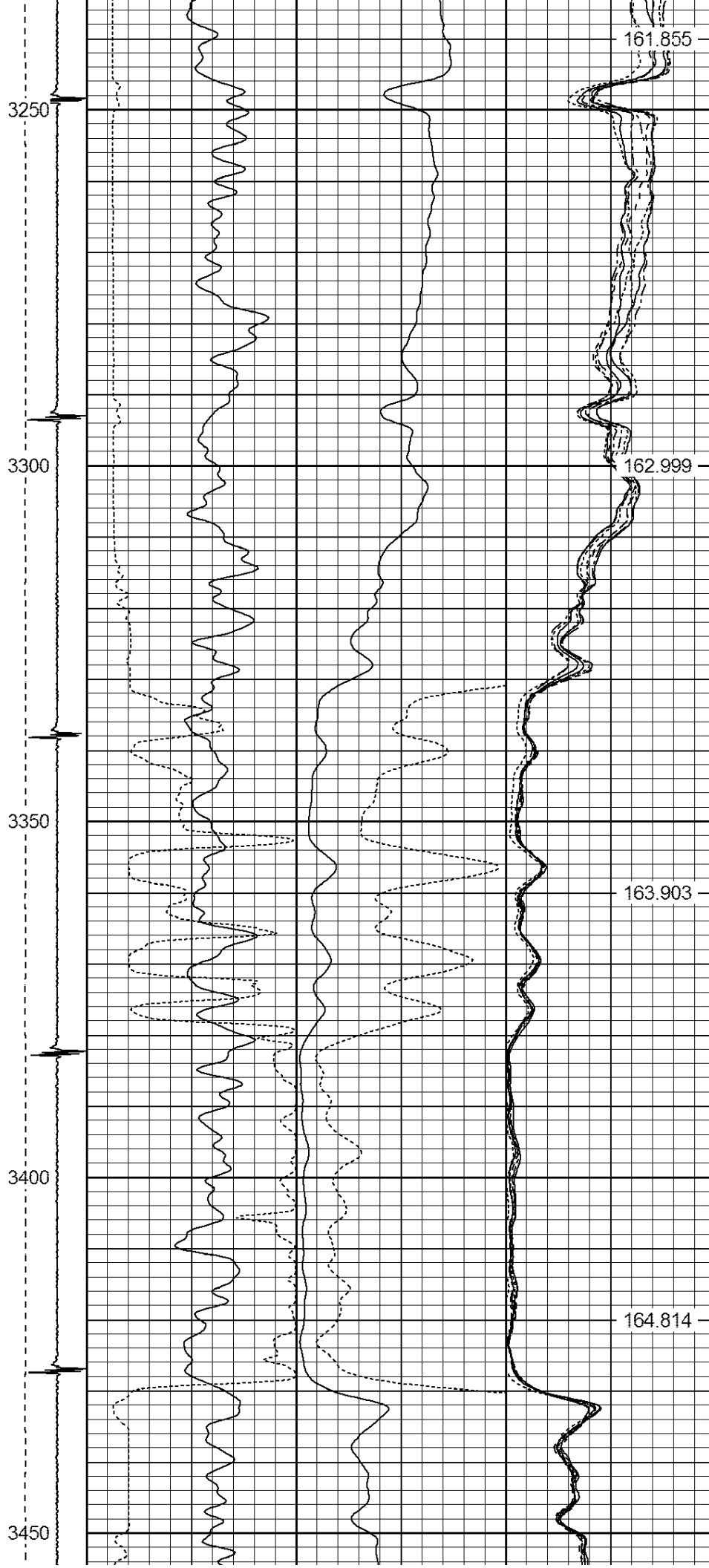
3200

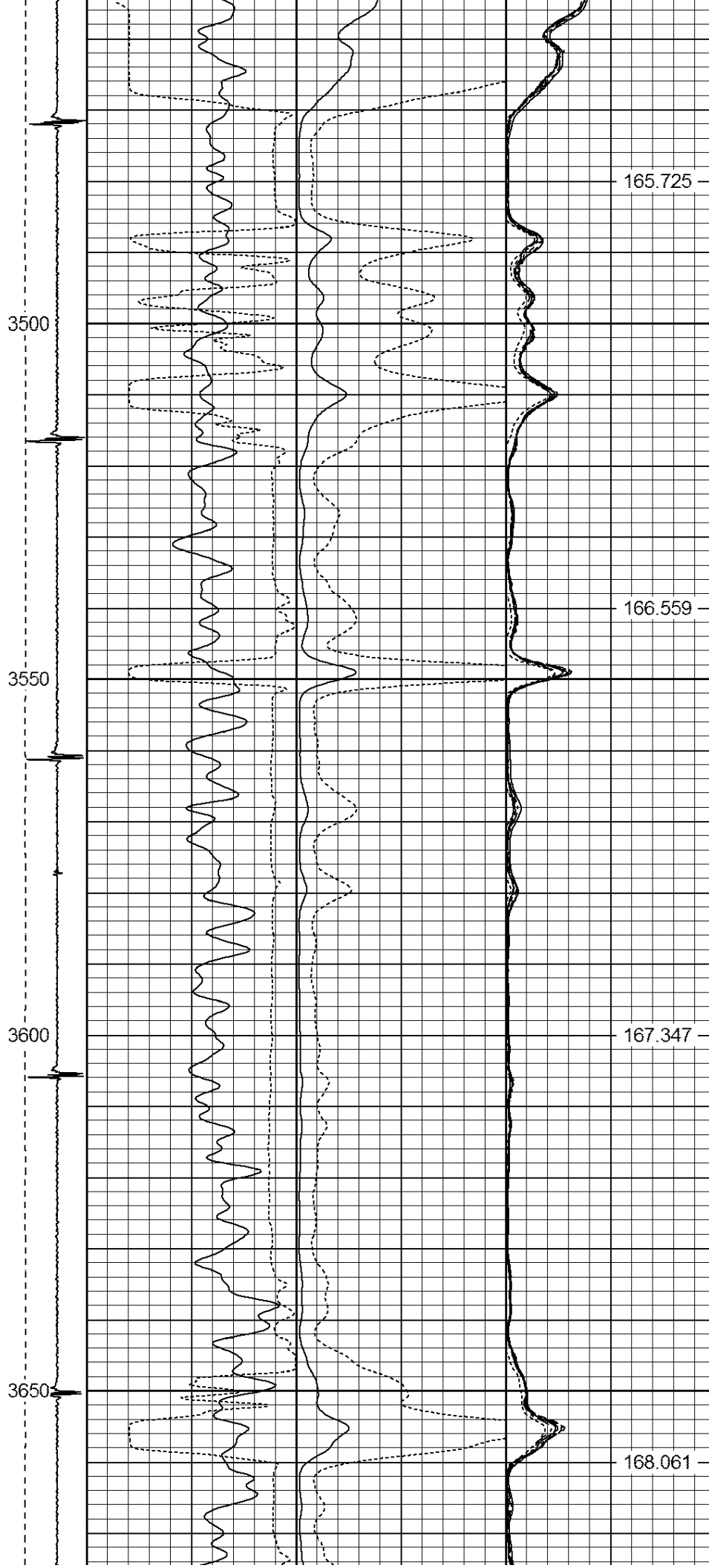
158.607

159.695

160.832









3700

3750

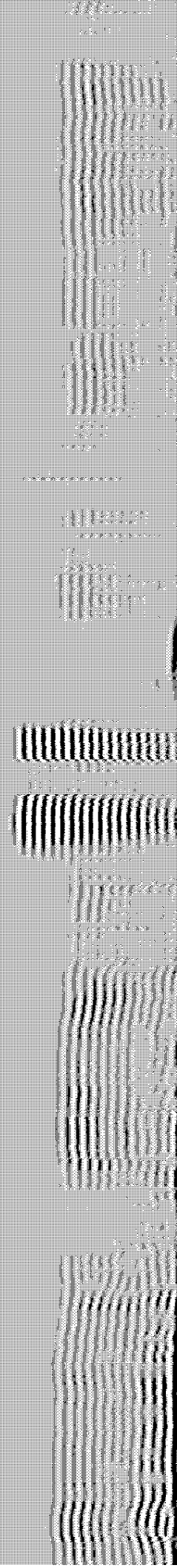
3800

3850

168.692

169.285

169.73





3900

3950

4000

4050

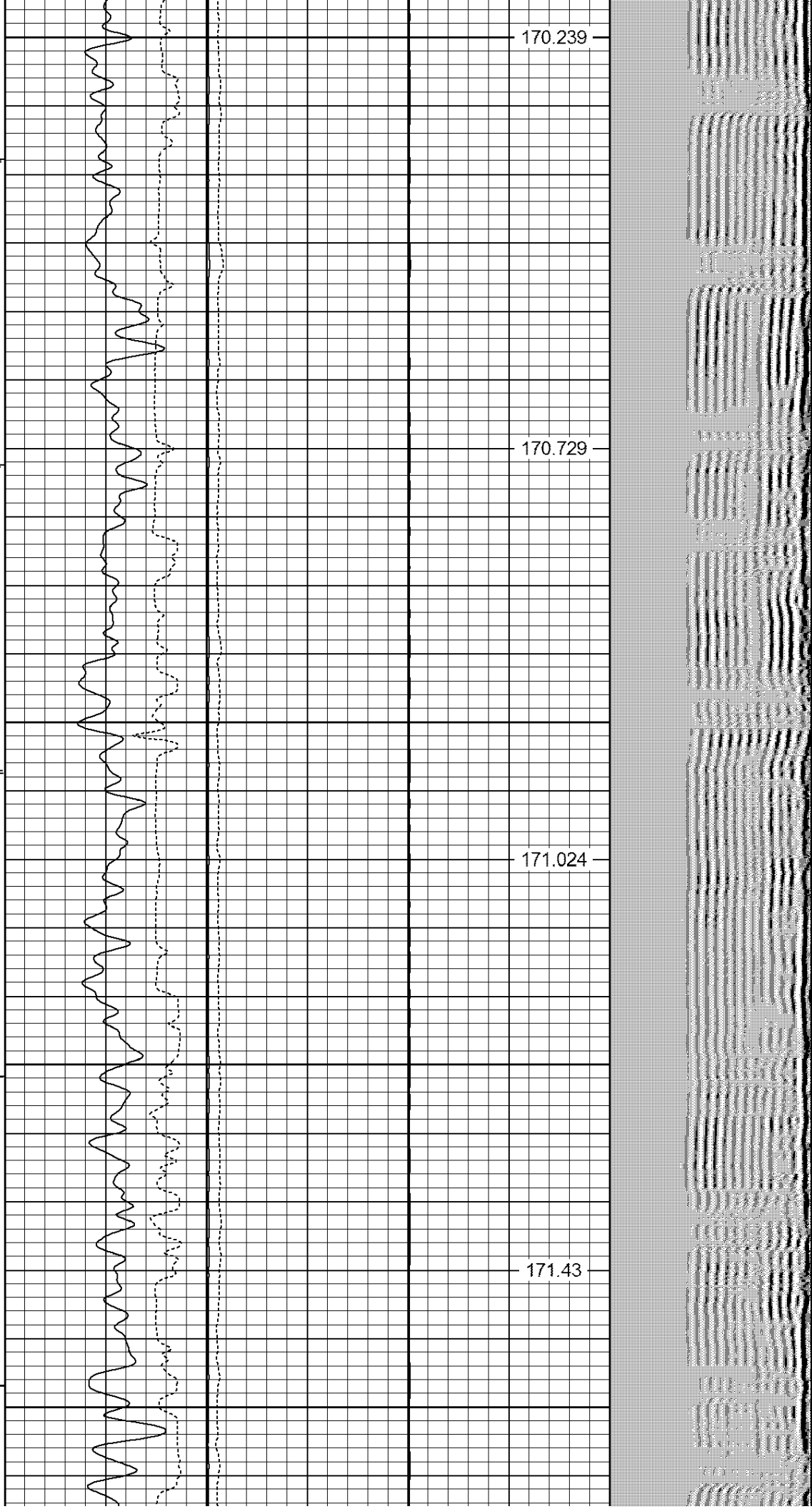
4100

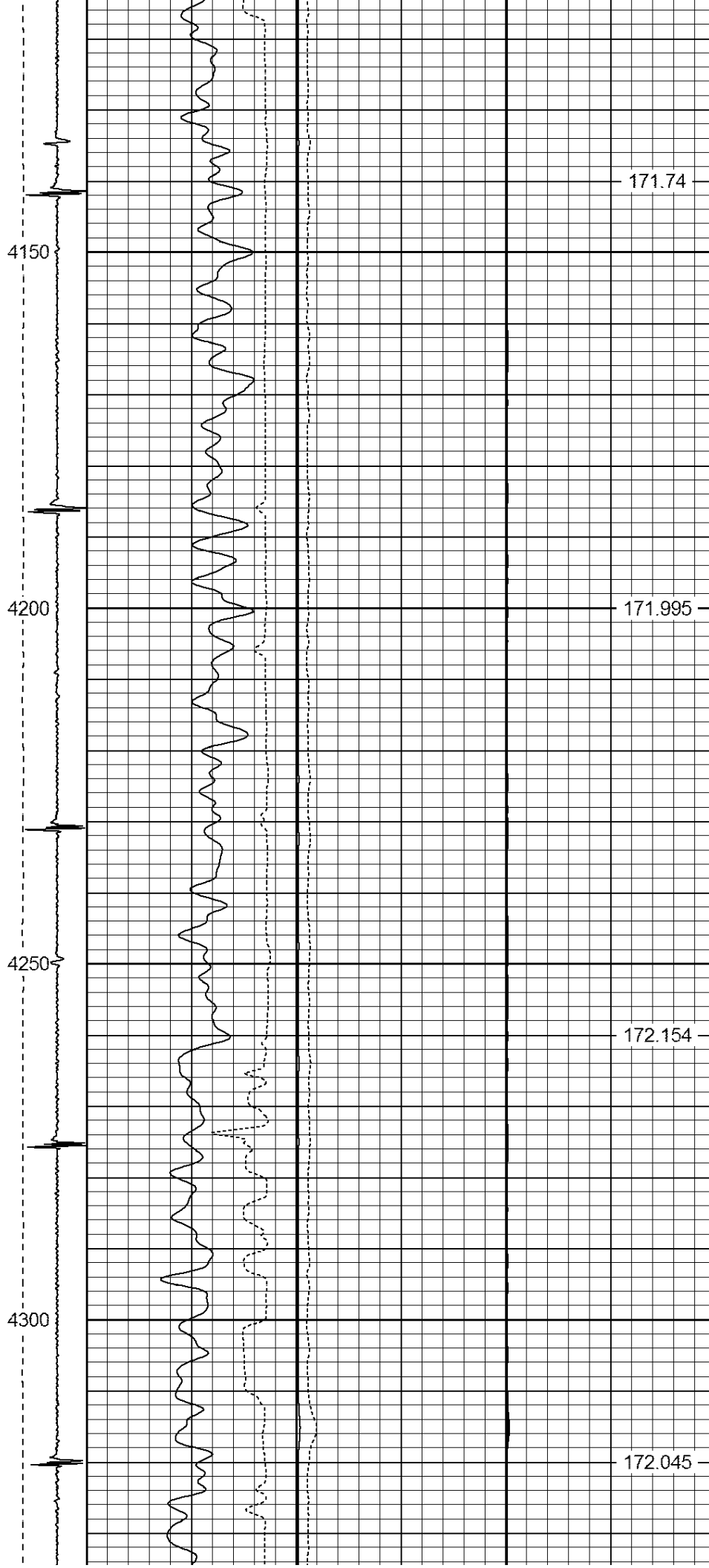
170.239

170.729

171.024

171.43





4350

4400

4450

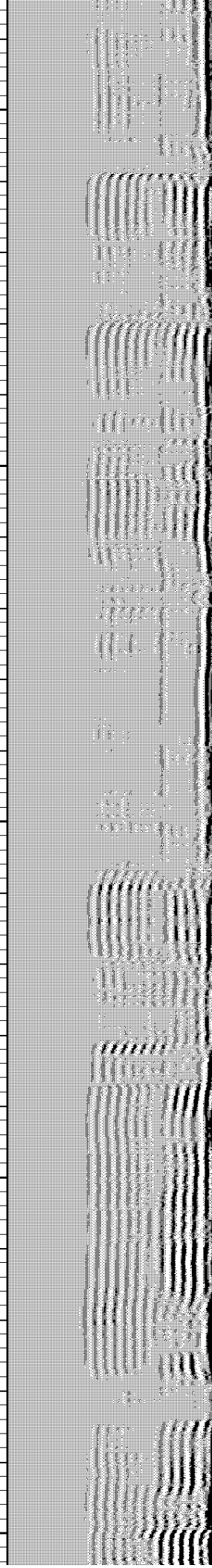
4500

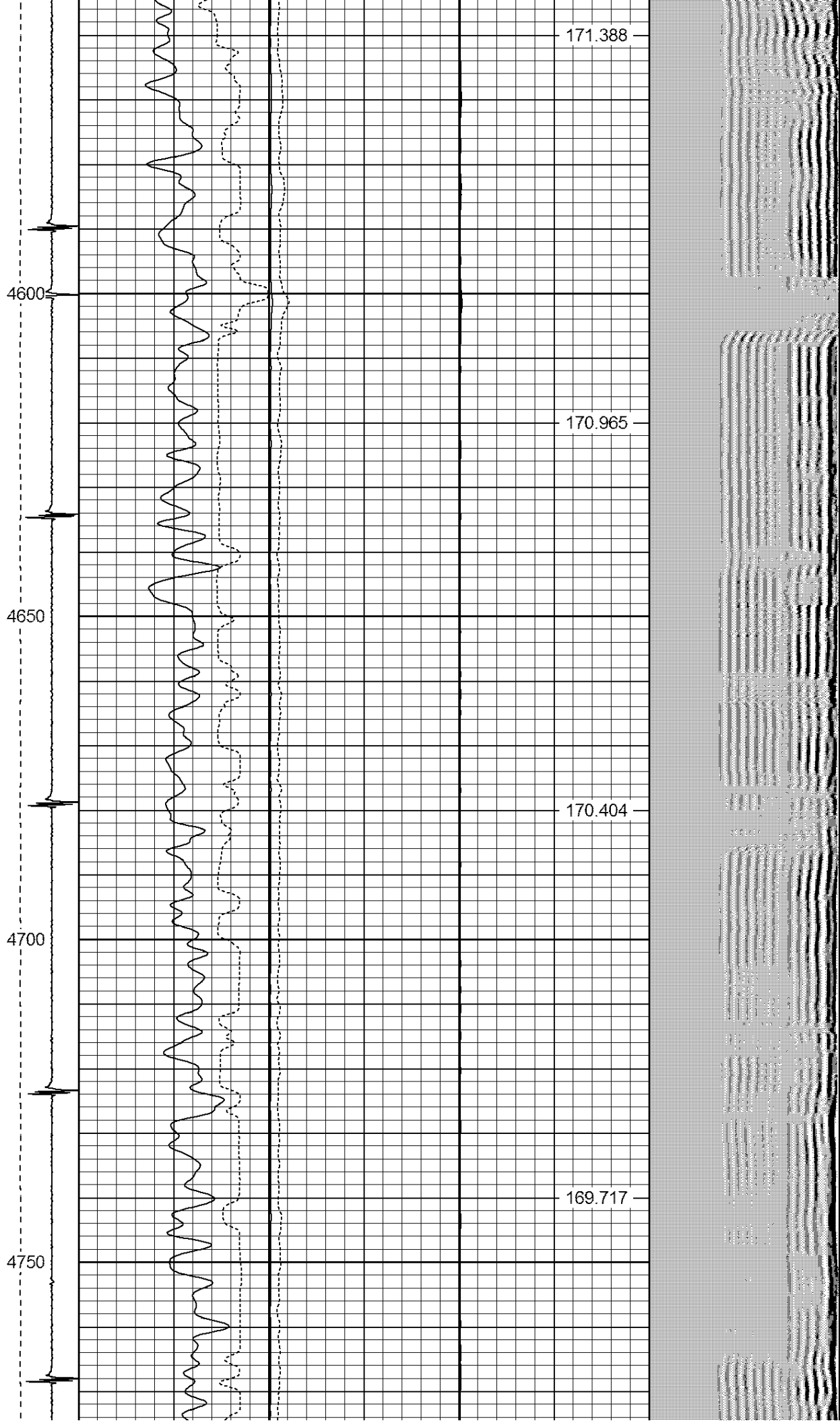
4550

172.111

171.877

171.674





4800

168.922

4850

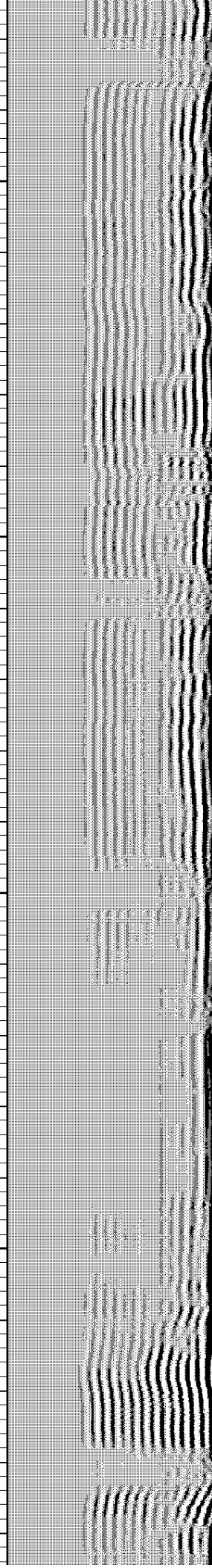
167.922

4900

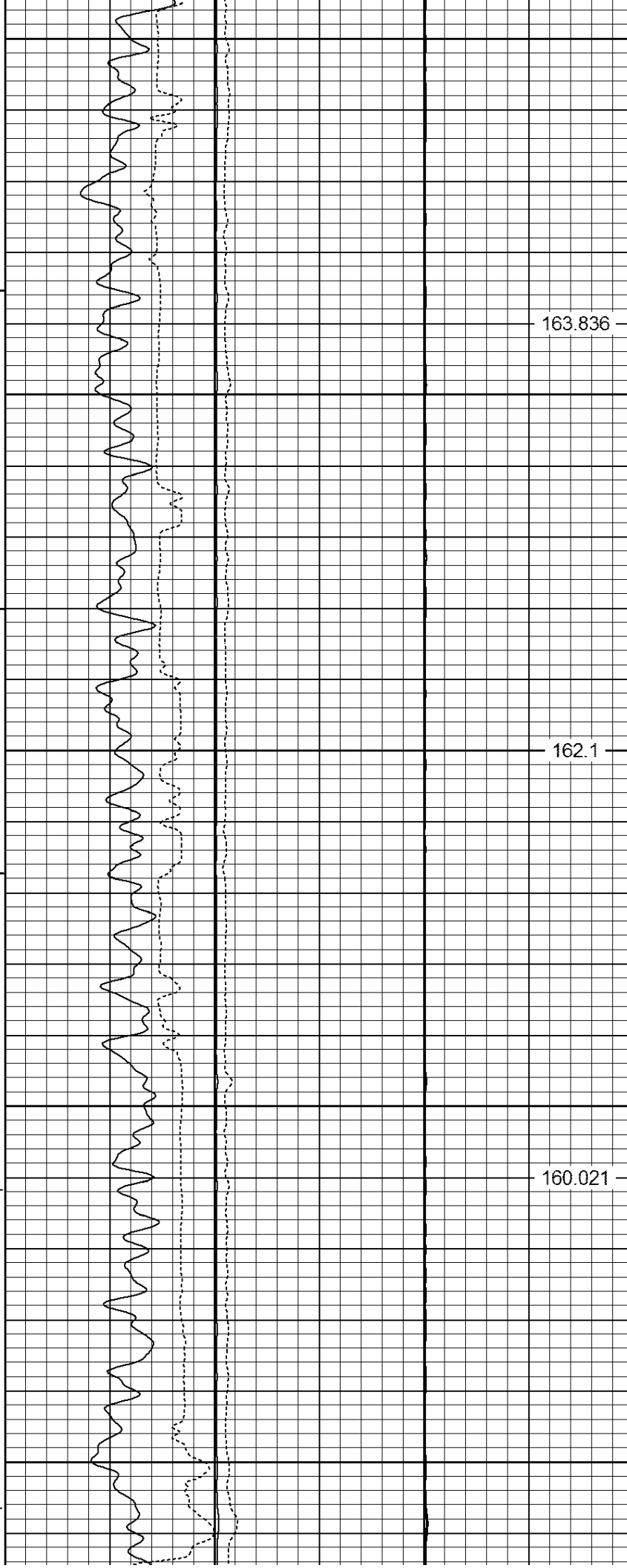
166.759

4950

165.392



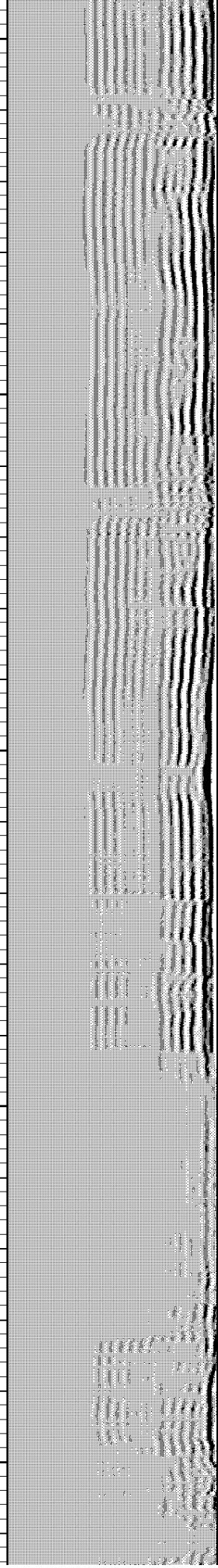
5000  
5050  
5100  
5150  
5200



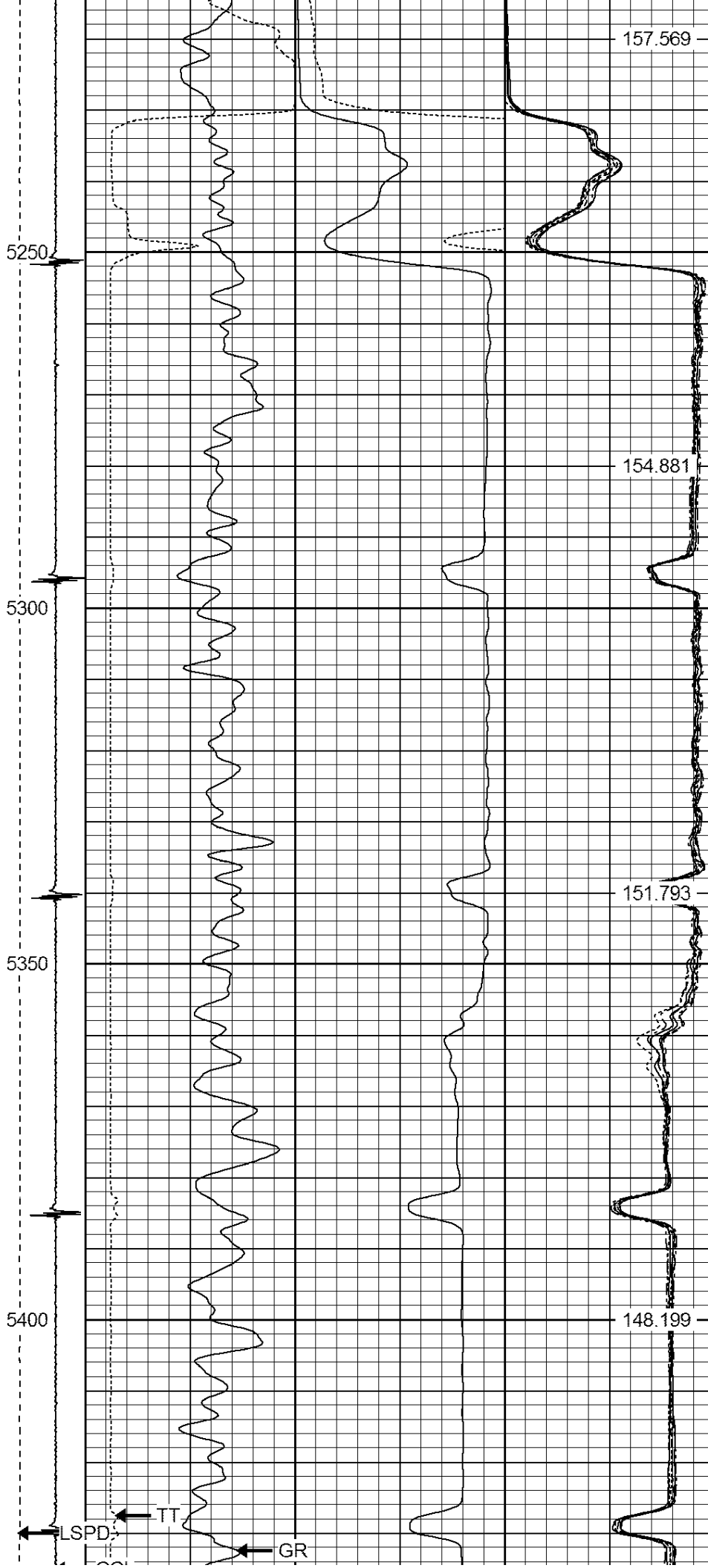
163.836

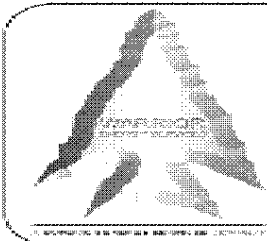
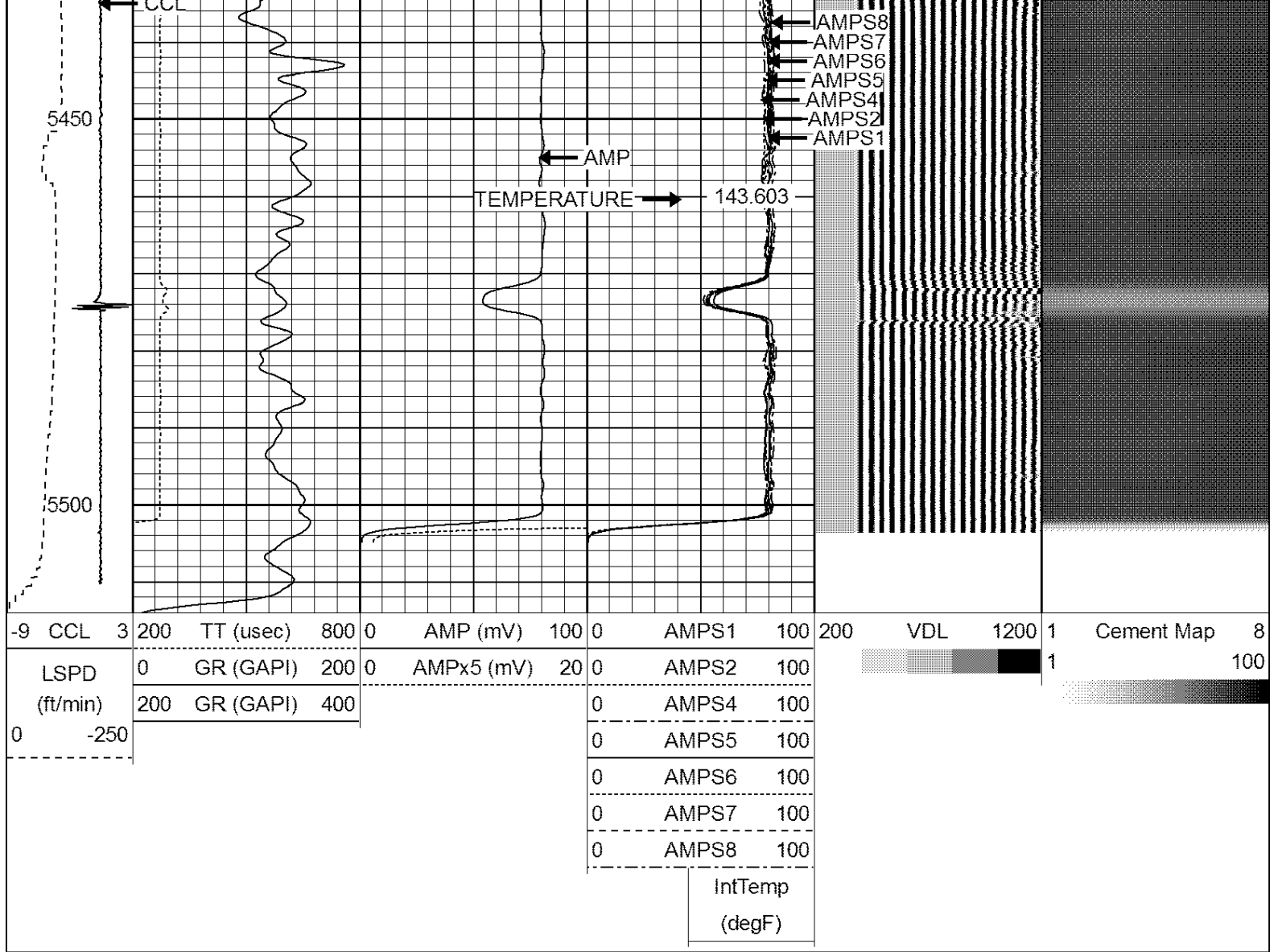
162.1

160.021









**WARRIOR**  
ENERGY SERVICES

Company Kerr McGee Oil & Gas  
Well HSR SPILMAN 9-35  
Field Wattenberg  
County Weld  
State CO