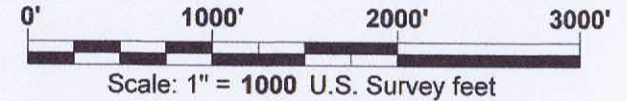


NOTES:
 EXISTING WELL PAD
 GROUND ELEVATION = 7680.0' NAVD '88 DATUM
 BENCH MARK = USGS BC R268, ELEV. OF 6705.95'
 LAT. = 39°07'00.7"N LAT. = 39.11687°N
 LON. = 107°27'29.8"W LON. = 107.45829°W
 NAD 83 DATUM
 PDOP = 1.0 (MAX)
 GPS OPERATOR: D. NICEWICZ
 DRAWING DATE: February 12, 2015
 FIELD DATE: January 1, 2015



LEGEND

- ◆ ~ FOUND ORIGINAL STONE
- ~ FOUND GLO BRASS CAP ON STEEL POST
- ⊕ ~ FOUND REBAR AND CAP BY LS15710
- ~ FOUND No.6 REBAR WITH A 2 1/2" ALUMINUM CAP, LS24963
- ~ WELL FEATURE
- (M) ~ MEASURED IN FIELD
- L ~ 90° SYMBOL
- WC ~ WITNESS CORNER

BASIS OF BEARING:

THE LINE FROM THE E 1/4 CORNER TO THE NE CORNER OF SECTION 9, TOWNSHIP 11 SOUTH, RANGE 90 WEST, 6TH P.M., WAS ASSUMED TO BEAR N. 0°07'30" W. AS MONUMENTED AND SHOWN HEREON.

CERTIFICATE OF SURVEY:

I, David G. Nicewicz, a Registered Land Surveyor in the State of Colorado, do hereby certify that the survey represented by this plat was made under my direction and supervision, and that this plat accurately represents this survey.

David G. Nicewicz P.L.S. No. 24963
 (for and on behalf of AECOM)

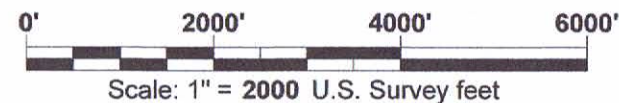


GAS WELL LOCATION PLAT

FEDERAL 11-90-09 #4 SURFACE LOCATION
 Located in the NW 1/4 of Section 9,
 Township 11 South, Range 90 West, 6th P.M.,
 Gunnison County, Colorado

SURVEYED BY: DGN	DWG DATE: 02/12/15	David G. Nicewicz, PLS cell: (720) 456-1104 david.nicewicz@urs.com AECOM 804 Colorado Ave, Suite 201 Glenwood Springs Co 81610	
DRAFTED BY: MLD	SCALE: 1" = 1000'		
JOB NO.: 22244264.50800		SHEET NO. 1 of 1	

AECOM OF GLENWOOD SPRINGS COLORADO, has in accordance with a request from ERIC SANFORD, for SG INTERESTS I, LTD, determined the location of FEDERAL 11-90-09 #4 SURFACE LOCATION to be 1754 FNL & 1016 FWL in Section 9, Township 11 South, Range 90 West, of the Sixth Principal Meridian, Gunnison County, Colorado.



LEGEND

- ◆ ~ FOUND ORIGINAL STONE
- ~ FOUND GLO BRASS CAP ON STEEL POST
- ⊕ ~ FOUND REBAR AND CAP BY LS15710
- ~ FOUND No.6 REBAR WITH A 2 1/2" ALUMINUM CAP, LS24963
- ~ WELL FEATURE
- (M) ~ MEASURED IN FIELD
- L ~ 90° SYMBOL
- WC ~ WITNESS CORNER

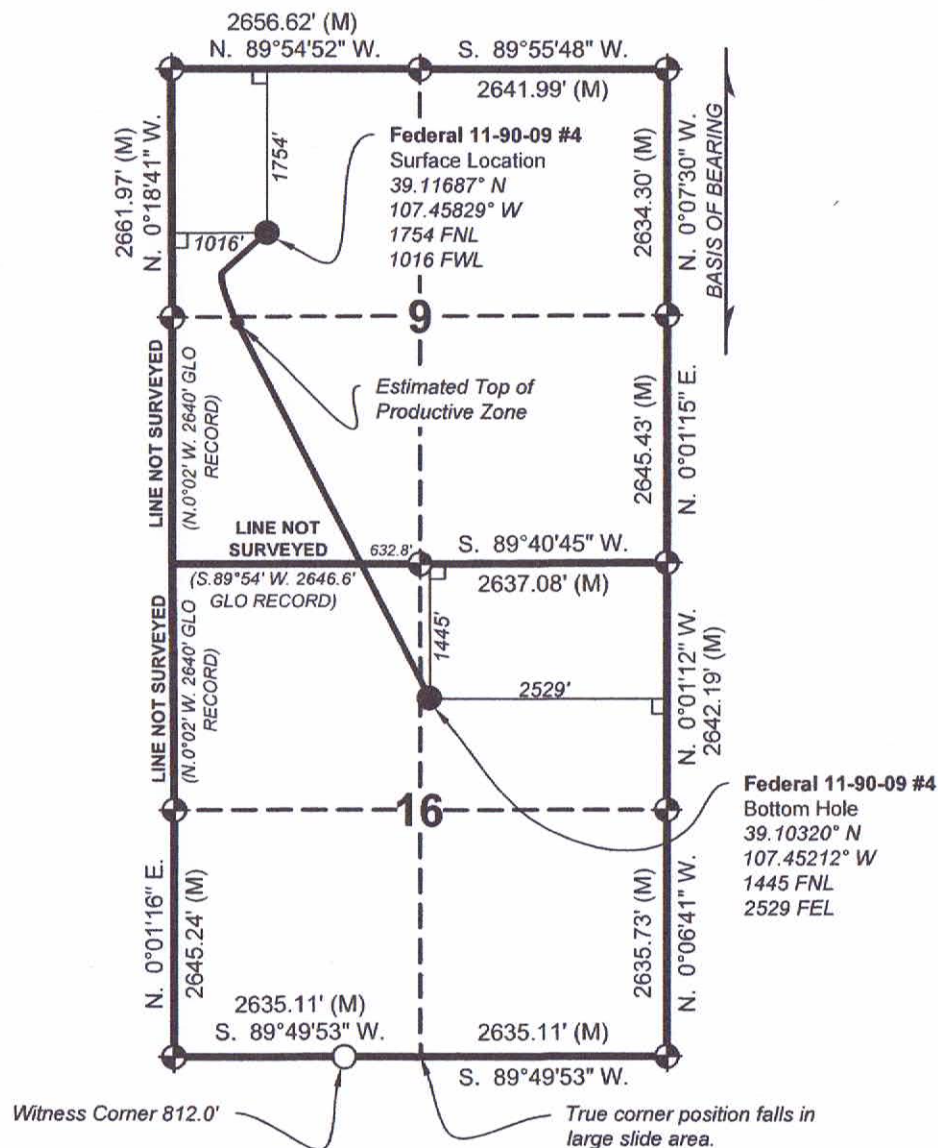
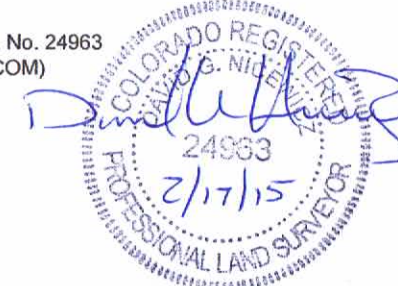
BASIS OF BEARING:

THE LINE FROM THE E $\frac{1}{4}$ CORNER TO THE NE CORNER OF SECTION 9, TOWNSHIP 11 SOUTH, RANGE 90 WEST, 6TH P.M., WAS ASSUMED TO BEAR N. 0°07'30" W. AS MONUMENTED AND SHOWN HEREON.

CERTIFICATE OF SURVEY:

I, David G. Nicewicz, a Registered Land Surveyor in the State of Colorado, do hereby certify that the survey represented by this plat was made under my direction and supervision, and that this plat accurately represents this survey.

David G. Nicewicz P.L.S. No. 24963
(for and on behalf of AECOM)



AECOM OF GLENWOOD SPRINGS COLORADO, has in accordance with a request from ERIC SANFORD, for SG INTERESTS I, LTD, determined the location of **FEDERAL 11-90-09 #4 BOTTOM HOLE** to be **1445 FNL & 2529 FEL** in Section 16, Township 11 South, Range 90 West, of the Sixth Principal Meridian, Gunnison County, Colorado.

GAS WELL LOCATION PLAT

FEDERAL 11-90-09 #4 BOTTOM HOLE

Located in the NE 1/4 of Section 16,
Township 11 South, Range 90 West, 6th P.M.,
Gunnison County, Colorado

SURVEYED BY:
DGN

DRAFTED BY:
MLD

DWG DATE:
02/12/15

SCALE:
1" = 2000'

David G. Nicewicz, PLS

cell: (720) 456-1104
david.nicewicz@urs.com

AECOM
804 Colorado Ave, Suite 201
Glenwood Springs Co 81610

JOB NO.: 22244264.50800

SHEET NO. 1 of 1