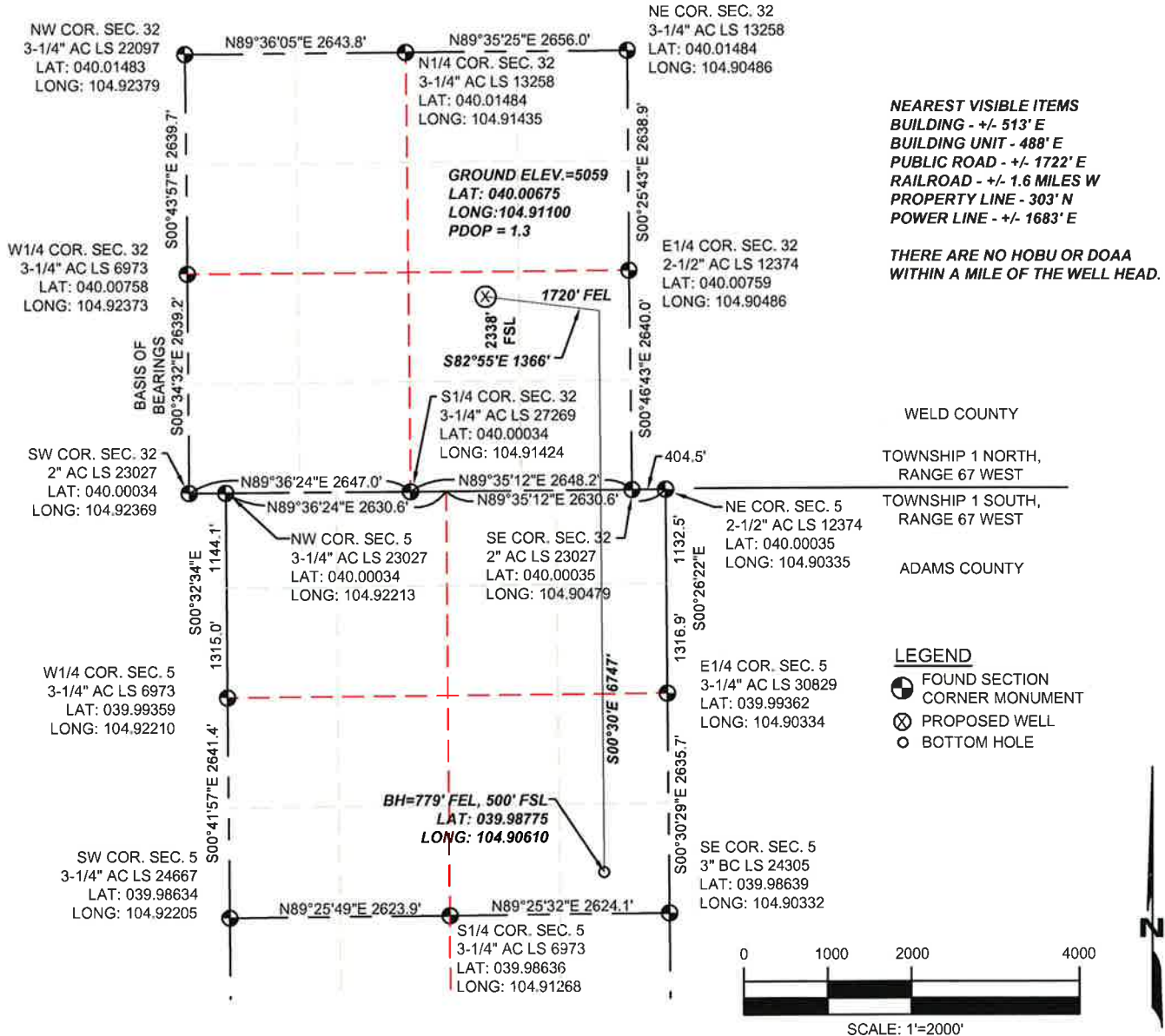


# WELL LOCATION CERTIFICATE

SECTION 32, TOWNSHIP 1 NORTH & SECTION 5, TOWNSHIP 1 SOUTH,  
RANGE 67 WEST, 6TH P.M.



## NOTES:

- THIS IS A HORIZONTAL DRILL WELL. BOTTOM HOLE AT 779' FEL, 500' FSL, SECTION 5.
- SEE LOCATION DRAWING FOR IMPROVEMENTS.
- ELEVATION SOURCE: USGS QUAD MAP CONTOURS, 7.5 MINUTE SERIES, NGVD 1929 DATUM.
- SECTION DIMENSIONS SHOWN ARE FIELD MEASURED. EXTERIOR SECTION LINES ARE DRAWN TO SCALE. DISTANCES TO WELL LOCATION ARE PERPENDICULAR TO SECTION LINES.
- THIS IS NOT A MONUMENTED BOUNDARY. THIS EXHIBIT IS INTENDED ONLY TO DEPICT THE PROPOSED WELL LOCATION TO SECTION LINES.

I HEREBY STATE TO PDC ENERGY THAT THE SURFACE LOCATION FOR THE PROPOSED WELL JACOBUCCI 32S-323 IS LOCATED 2338' FSL AND 1720' FEL, SEC. 32, T1N, R67W, 6TH P.M.



THOMAS G. CARLSON, PLS 24657  
SAM, LLC

FIELD DATE 09/11/2014	SCALE: 1"=2000'	PROJ. No. 34481	Dwg. No. JACOBUCCI09092014.dwg
EXHIBIT DATE 09/19/2014			

**SAM**  
 SURVEYING AND MAPPING LLC (SAM)  
 555 Zang St, Suite 210  
 Lakewood CO 80228  
 Ph: (303) 988-5852  
 Fax: (303) 988-2195  
 EMAIL: SAM@SAM.BIZ

WELL NAME: <b>JACOBUCCI 32S-323</b>	
LOCATION: SURFACE: SEC. 32, T1N, R67W, 6TH P.M. WELD COUNTY, COLORADO; BOTTOM HOLE: SEC. 5, T1S, R67W, 6TH P.M. ADAMS COUNTY, COLORADO	
DRAWN BY: SJT	CHECKED BY: T. CARLSON
	SHEET No. 1 OF 1