

# WELL LOCATION CERTIFICATE: JOHNSON TRUST 6

SECTION 13, TOWNSHIP 2 NORTH, RANGE 68 WEST, 6TH P.M.

NW COR. SEC. 13  
3/4" ALUM. CAP  
PLS 33642

S 89°31'38" E 2698.65'

N 1/4 COR. SEC. 13  
3/4" ALUM. CAP  
PLS 34990

S 89°31'28" E 2661.94'

NE COR. SEC. 13  
2 1/2" ALUM. CAP  
PLS 24305

NOTES:  
BH LOCATION PROVIDED BY CLIENT.  
LAND SURFACE USE- IRRIGATED CROP  
SEE ATTACHED MAP FOR ADDITIONAL  
IMPROVEMENTS WITHIN 500'.

PDOP= 1.6  
GPS OPERATOR: ALAN HNIZDO

SURFACE LOCATION  
GROUND ELEVATION= 4924'  
NAD83  
LATITUDE= 40.137262°  
LONGITUDE= 104.959620°

LANDING POINT LOCATION  
NAD83  
LATITUDE= 40.137412°  
LONGITUDE= 104.956664°

BOTTOM HOLE LOCATION  
NAD83  
LATITUDE= 40.125331°  
LONGITUDE= 104.956620°

# 13

W 1/4 COR. SEC. 13  
2 1/2" ALUM. CAP  
PLS 13482

**JOHNSON  
TRUST 6**

LP-2181' FSL  
1215' FWL

388'

N 85°51'54" E  
828.30'

2125'

S 00°30'34" E 4400.91'

SW COR. SEC. 13  
2 1/2" ALUM. CAP  
PLS 29415

S 89°45'22" W 2663.58'

S 1/4 COR. SEC. 13  
3/4" ALUM. CAP  
PLS 14030

S 89°46'26" W 2661.92'  
(BASIS OF BEARINGS) SEE NOTE 2

E 1/4 COR. SEC. 13  
2 1/2" ALUM. CAP  
PLS 31169

S 00°06'35" E 2616.01'

SE COR. SEC. 13  
2 1/2" ALUM. CAP  
PLS 24305

BH-2220' FNL  
1215' FWL

**WELL JOHNSON TRUST 6 TO BE LOCATED 2125' FSL AND 388' FWL**

## LEGEND

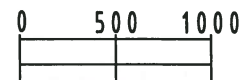
- = EXISTING MONUMENT    ▲ = LANDING POINT  
● = PROPOSED WELL    LP = LANDING POINT  
◆ = EXISTING WELL    BH = BOTTOM HOLE  
◆ = BOTTOM HOLE

## NOTES:

- THIS FIELD SURVEY CONFORMS TO THE MINIMUM STANDARDS SET BY THE C.O.G.C.C., RULE NO. 215
- BEARINGS AND DISTANCE SHOWN HEREON ARE GRID AND BASED ON THE COLORADO STATE PLANE COORDINATE SYSTEM, NAD 83/2011 BETWEEN MONUMENTS AS LABELED HEREON AND ELEVATIONS SHOWN ARE NAVD 88, AS DERIVED BY GPS OBSERVATIONS.
- GRID DISTANCES ARE SHOWN, AS MEASURED IN THE FIELD, WITH TIES TO WELLS MEASURED PERPENDICULAR TO SECTION LINES.

I, MICHAEL L. POOL, A LICENSED PROFESSIONAL LAND SURVEYOR IN THE STATE OF COLORADO DO HEREBY CERTIFY TO **EXTRACTION OIL & GAS**, THAT THE SURVEY AND WELL LOCATION CERTIFICATE SHOWN HEREON WERE DONE BY ME OR UNDER MY DIRECT SUPERVISION AND THAT THE DRAWING SHOWN HEREON ACCURATELY DEPICTS THE PROPOSED LOCATION OF THE WELL. THIS CERTIFICATE DOES NOT REPRESENT A LAND SURVEY PLAT OR IMPROVEMENT SURVEY PLAT AS DEFINED BY C.R.S. 38-51-102 AND CANNOT BE RELIED UPON TO DETERMINE OWNERSHIP.

MICHAEL L. POOL, PLS 38304  
COLORADO LICENSED PROFESSIONAL LAND SURVEYOR  
FOR AND ON BEHALF OF P.F.S., LLC



SCALE: 1"=1000'

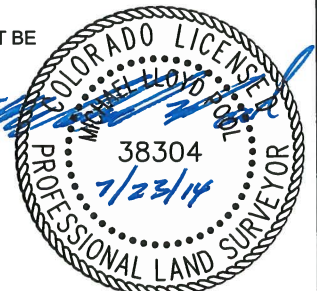


SHEET 1 OF 2

PREPARED BY:  
**PFS**  
Petroleum Field Services, LLC  
7536 Hilltop Circle  
Denver, CO 80221

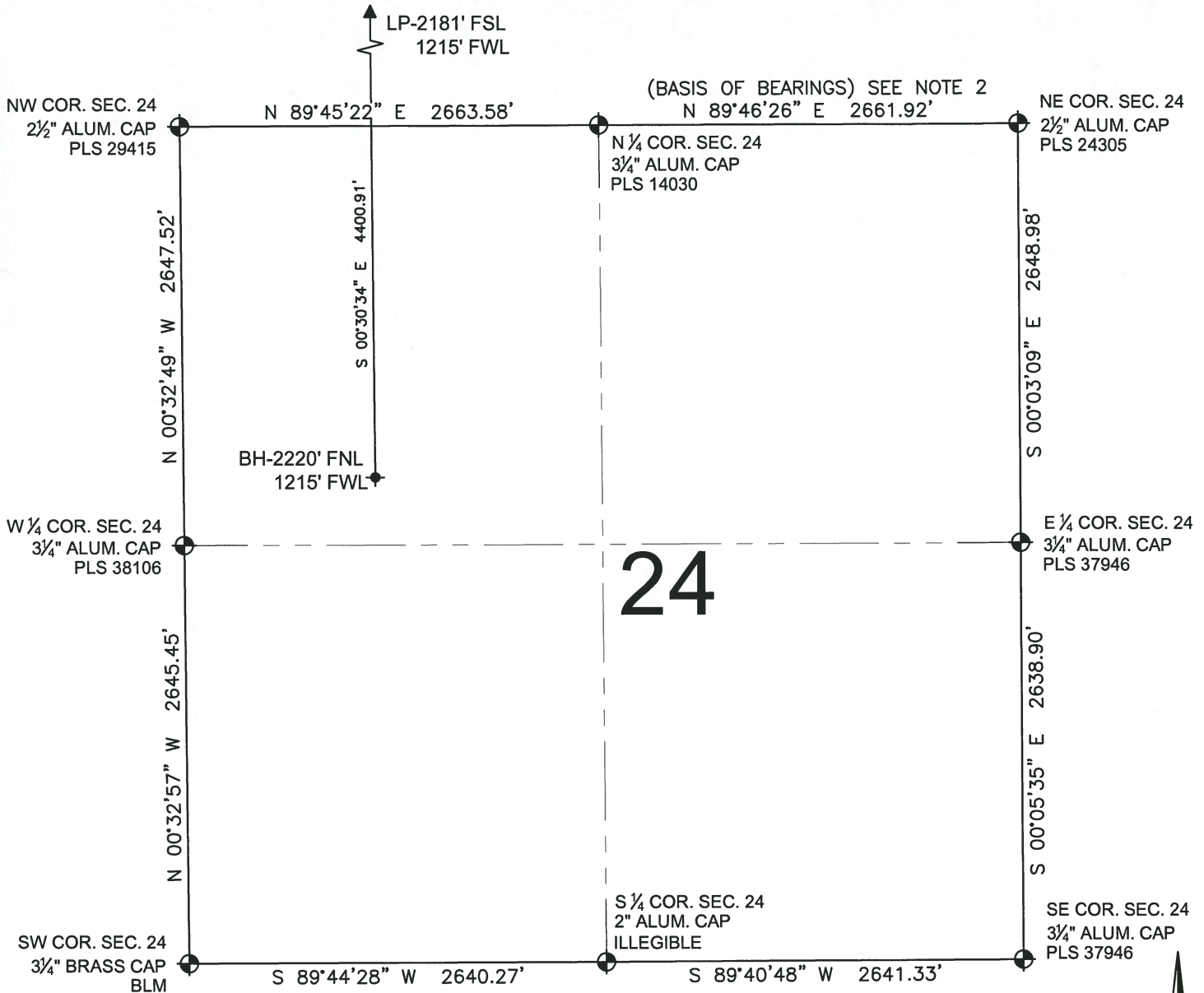
FIELD DATE:  
07-12-14  
DRAWING DATE:  
07-23-14  
BY: MDC  
CHECKED: WDW  
SURFACE LOCATION:  
NW 1/4 SW 1/4,  
SEC. 13, T2N, R68W, 6TH P.M.  
WELD COUNTY, COLORADO

NOTICE: ACCORDING TO COLORADO LAW YOU MUST COMMENCE ANY LEGAL ACTION BASED UPON ANY DEFECT IN THIS SURVEY WITHIN THREE YEARS AFTER YOU FIRST DISCOVER SUCH DEFECT. IN NO EVENT MAY ANY ACTION BASED UPON ANY DEFECT IN THIS SURVEY BE COMMENCED MORE THAN TEN YEARS FROM THIS SAID DATE OF THIS CERTIFICATION SHOWN HEREON.



# WELL LOCATION CERTIFICATE: JOHNSON TRUST 6

SECTION 24, TOWNSHIP 2 NORTH, RANGE 68 WEST, 6TH P.M.

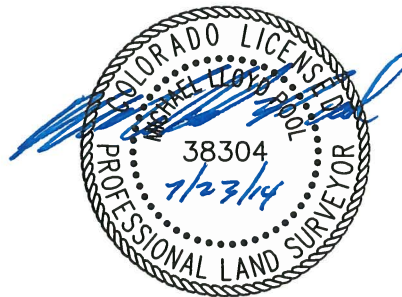


## LEGEND

- = EXISTING MONUMENT
- ▲ = LANDING POINT
- = PROPOSED WELL
- LP = LANDING POINT
- ◆ = EXISTING WELL
- BH = BOTTOM HOLE
- ◆ = BOTTOM HOLE

## NOTES:

- THIS FIELD SURVEY CONFORMS TO THE MINIMUM STANDARDS SET BY THE C.O.G.C.C., RULE NO. 215
- BEARINGS AND DISTANCE SHOWN HEREON ARE GRID AND BASED ON THE COLORADO STATE PLANE COORDINATE SYSTEM, NAD 83/2011 BETWEEN MONUMENTS AS LABELED HEREON AND ELEVATIONS SHOWN ARE NAVD 88, AS DERIVED BY GPS OBSERVATIONS.
- GRID DISTANCES ARE SHOWN, AS MEASURED IN THE FIELD, WITH TIES TO WELLS MEASURED PERPENDICULAR TO SECTION LINES.



MICHAEL L. POOL, PLS 38304  
COLORADO LICENSED PROFESSIONAL LAND SURVEYOR  
FOR AND ON BEHALF OF P.F.S., LLC

SHEET 2 OF 2

PREPARED BY:  
**PFS**  
Petroleum Field Services, LLC  
7535 Hilltop Circle  
Denver, CO 80221

FIELD DATE:  
07-12-14  
DRAWING DATE:  
07-23-14  
BY:  
MDC  
CHECKED:  
WDW  
SURFACE LOCATION:  
NW 1/4 SW 1/4,  
SEC. 13, T2N, R68W, 6TH P.M.  
WELD COUNTY, COLORADO

NOTICE: ACCORDING TO COLORADO LAW YOU MUST COMMENCE ANY LEGAL ACTION BASED UPON ANY DEFECT IN THIS SURVEY WITHIN THREE YEARS AFTER YOU FIRST DISCOVER SUCH DEFECT. IN NO EVENT MAY ANY ACTION BASED UPON ANY DEFECT IN THIS SURVEY BE COMMENCED MORE THAN TEN YEARS FROM THIS SAID DATE OF THIS CERTIFICATION SHOWN HEREON.

0 500 1000  
SCALE: 1"=1000'