



7535 Hilltop Circle  
Denver, CO 80221  
[www.petro-fs.com](http://www.petro-fs.com)

December 3, 2014

Mr. Matt Lepore, Director  
Colorado Oil and Gas Conservation Commission  
1120 Lincoln Street, Suite 801  
Denver, Colorado 80203

**RE: COGCC Rule 318A.e.: Proposed Wellbore Spacing Unit  
Johnson Trust 4 Well: NWSW, Section 13, Township 2 North, Range 68 West  
Weld County, Colorado**

Dear Mr. Lepore:

Extraction Oil and Gas, LLC (Extraction) is planning to drill the above referenced well in accordance with the provisions set out in the Colorado Oil and Gas Conservation Commission (COGCC) Rule 318A.e..

Extraction's Proposed Spacing Unit consists of:

E½SW¼ of Section 13, Township 2 North, Range 68 West.


E½NW¼ and NE¼SW¼ of Section 24, Township 2 North, Range 68 West.

Containing 200 acres, more or less.

Extraction is not the only owner within the Proposed Spacing Unit and has provided notice to the remaining owners within this Proposed Spacing Unit, as required by COGCC Rule 318A.e.(5). Copies of the required notification letters are on file at Extraction's office. The required thirty (30) day notice period has elapsed absent the receipt by Extraction of any objection to their proposal by the owners within the Proposed Spacing Unit for the subject well.

Enclosed is the Proposed Spacing Unit Exhibit to assist in your review and approval of Extraction's proposed Application for Permit to Drill for the Johnson Trust 4 Well. Many thanks for your attention to this matter.

Respectfully,



Jennifer Grosshans  
Regulatory Analyst  
Agent for Extraction Oil and Gas, LLC

:jg

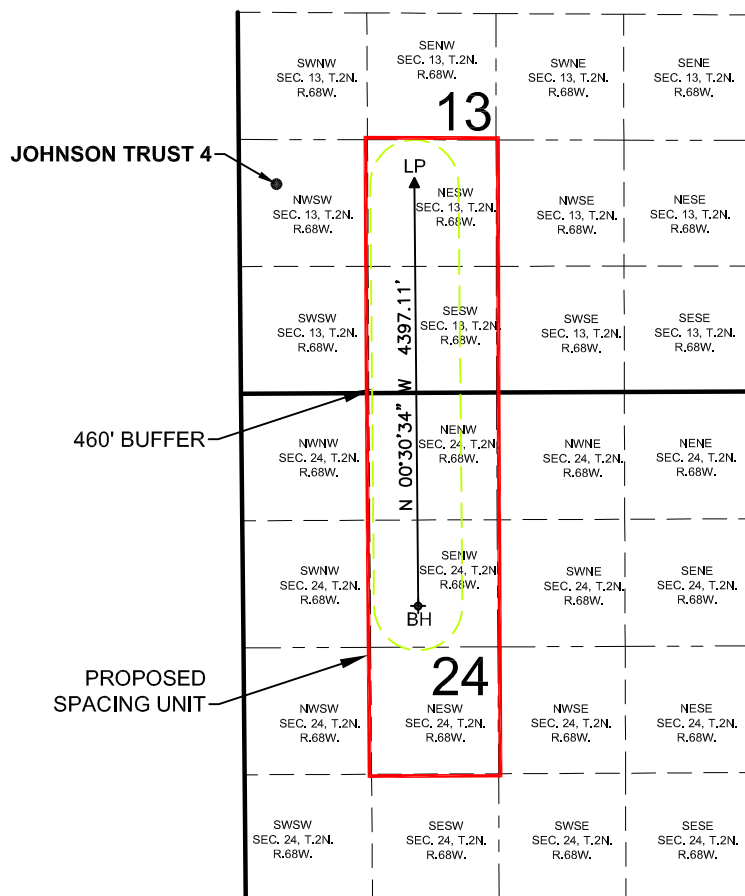
Enclosure: Proposed Spacing Unit Exhibit

*We are what we repeatedly do. Excellence, then, is not an act, but a habit.*

*-Aristotle*

# PROPOSED 318A.e. SPACING UNIT

## SECTION 13 & 24, TOWNSHIP 2 NORTH, RANGE 68 WEST, 6TH P.M.



WELL **JOHNSON TRUST 4** TO BE LOCATED 2181' FSL AND 389' FWL, SEC. 13, T2N, R68W

### LEGEND

- = PROPOSED WELL
- ▲ = LANDING POINT
- ◆ = BOTTOM HOLE
- LP = LANDING POINT
- BH = BOTTOM HOLE

SHEET 4 OF 9

### SURFACE LOCATION

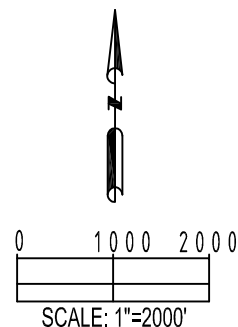
NAD83  
 LATITUDE= 40.137416°  
 LONGITUDE= 104.959620°

### LANDING POINT LOCATION

NAD83  
 LATITUDE= 40.137399°  
 LONGITUDE= 104.954482°

### BOTTOM HOLE LOCATION

NAD83  
 LATITUDE= 40.125328°  
 LONGITUDE= 104.954439°



PREPARED BY: <b>PFS</b> Petroleum Field Services, LLC 7535 Hilltop Circle Denver, CO 80221	FIELD DATE: 07-12-14	SURFACE LOCATION: NW 1/4 SW 1/4, SEC. 13, T2N, R68W, 6TH P.M. WELD COUNTY, COLORADO
	DRAWING DATE: 07-23-14	
BY: TJR	CHECKED: MDC	