

WELL LOCATION CERTIFICATE: JOHNSON TRUST 3

SECTION 13, TOWNSHIP 2 NORTH, RANGE 68 WEST, 6TH P.M.

NW COR. SEC. 13
3/4" ALUM. CAP
PLS 33642

S 89°31'38" E 2698.65'

N 1/4 COR. SEC. 13
3/4" ALUM. CAP
PLS 34990

S 89°31'28" E 2661.94'

NE COR. SEC. 13
2 1/2" ALUM. CAP
PLS 24305

NOTES:

BH LOCATION PROVIDED BY CLIENT.
LAND SURFACE USE- IRRIGATED CROP
SEE ATTACHED MAP FOR ADDITIONAL
IMPROVEMENTS WITHIN 500'.

PDOP= 1.6

GPS OPERATOR: ALAN HNIZDO

SURFACE LOCATION

GROUND ELEVATION= 4927'

NAD83

LATITUDE= 40.137493°

LONGITUDE= 104.959620°

LANDING POINT LOCATION

NAD83

LATITUDE= 40.137392°

LONGITUDE= 104.953391°

BOTTOM HOLE LOCATION

NAD83

LATITUDE= 40.125327°

LONGITUDE= 104.953348°

13

W 1/4 COR. SEC. 13
2 1/2" ALUM. CAP
PLS 13482

**JOHNSON
TRUST 3**

LP-2175' FSL
2130' FWL

389'

S 89°08'34" E

1741.78'

N 00°28'15" W 2648.47'

2209'

S 00°30'34" E 4395.21'

SW COR. SEC. 13
2 1/2" ALUM. CAP
PLS 29415

S 89°45'22" W 2663.58'

S 1/4 COR. SEC. 13
3/4" ALUM. CAP
PLS 14030

S 89°46'26" W 2661.92'
(BASIS OF BEARINGS) SEE NOTE 2

E 1/4 COR. SEC. 13
2 1/2" ALUM. CAP
PLS 31169

S 00°06'35" E 2616.01'

SE COR. SEC. 13
2 1/2" ALUM. CAP
PLS 24305

BH-2220' FNL
2130' FWL

WELL JOHNSON TRUST 3 TO BE LOCATED 2209' FSL AND 389' FWL

LEGEND

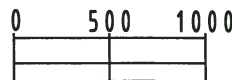
- = EXISTING MONUMENT ▲ = LANDING POINT
● = PROPOSED WELL LP = LANDING POINT
◆ = EXISTING WELL BH = BOTTOM HOLE
◆ = BOTTOM HOLE

NOTES:

- THIS FIELD SURVEY CONFORMS TO THE MINIMUM STANDARDS SET BY THE C.O.G.C.C., RULE NO. 215
- BEARINGS AND DISTANCE SHOWN HEREON ARE GRID AND BASED ON THE COLORADO STATE PLANE COORDINATE SYSTEM, NAD 83/2011 BETWEEN MONUMENTS AS LABELED HEREON AND ELEVATIONS SHOWN ARE NAVD 88, AS DERIVED BY GPS OBSERVATIONS.
- GRID DISTANCES ARE SHOWN, AS MEASURED IN THE FIELD, WITH TIES TO WELLS MEASURED PERPENDICULAR TO SECTION LINES.

I, MICHAEL L. POOL, A LICENSED PROFESSIONAL LAND SURVEYOR IN THE STATE OF COLORADO DO HEREBY CERTIFY TO **EXTRACTION OIL & GAS**, THAT THE SURVEY AND WELL LOCATION CERTIFICATE SHOWN HEREON WERE DONE BY ME OR UNDER MY DIRECT SUPERVISION AND THAT THE DRAWING SHOWN HEREON ACCURATELY DEPICTS THE PROPOSED LOCATION OF THE WELL. THIS CERTIFICATE DOES NOT REPRESENT A LAND SURVEY PLAT OR IMPROVEMENT SURVEY PLAT AS DEFINED BY C.R.S. 38-51-102 AND CANNOT BE RELIED UPON TO DETERMINE OWNERSHIP.

MICHAEL L. POOL, PLS 38304
COLORADO LICENSED PROFESSIONAL LAND SURVEYOR
FOR AND ON BEHALF OF P.F.S., LLC



SCALE: 1"=1000'



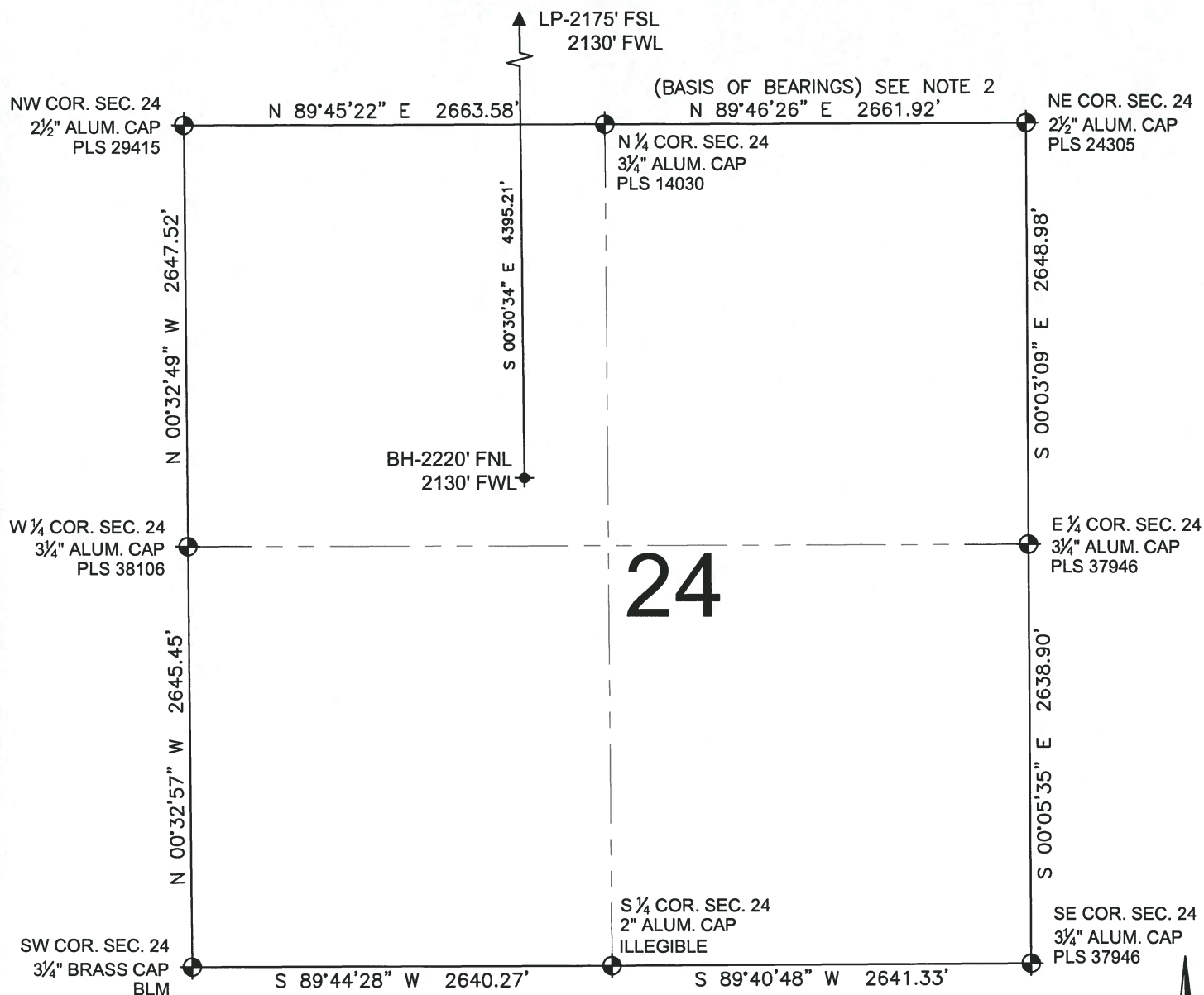
SHEET 1 OF 2

PREPARED BY: PFS Petroleum Field Services, LLC 7535 Hilltop Circle Denver, CO 80221	FIELD DATE: 07-12-14 DRAWING DATE: 07-23-14 BY: MDC CHECKED: WDW	SURFACE LOCATION: NW 1/4 SW 1/4, SEC. 13, T2N, R68W, 6TH P.M. WELD COUNTY, COLORADO
--	---	--

NOTICE: ACCORDING TO COLORADO LAW YOU MUST COMMENCE ANY LEGAL ACTION BASED UPON ANY DEFECT IN THIS SURVEY WITHIN THREE YEARS AFTER YOU FIRST DISCOVER SUCH DEFECT. IN NO EVENT MAY ANY ACTION BASED UPON ANY DEFECT IN THIS SURVEY BE COMMENCED MORE THAN TEN YEARS FROM THIS SAID DATE OF THIS CERTIFICATION SHOWN HEREON.

WELL LOCATION CERTIFICATE: JOHNSON TRUST 3

SECTION 24, TOWNSHIP 2 NORTH, RANGE 68 WEST, 6TH P.M.



LEGEND

- = EXISTING MONUMENT
- ▲ = LANDING POINT
- = PROPOSED WELL
- LP = LANDING POINT
- ◆ = EXISTING WELL
- BH = BOTTOM HOLE
- ◆ = BOTTOM HOLE

NOTES:

- THIS FIELD SURVEY CONFORMS TO THE MINIMUM STANDARDS SET BY THE C.O.G.C., RULE NO. 215
- BEARINGS AND DISTANCE SHOWN HEREON ARE GRID AND BASED ON THE COLORADO STATE PLANE COORDINATE SYSTEM, NAD 83/2011 BETWEEN MONUMENTS AS LABELED HEREON AND ELEVATIONS SHOWN ARE NAVD 88, AS DERIVED BY GPS OBSERVATIONS.
- GRID DISTANCES ARE SHOWN, AS MEASURED IN THE FIELD, WITH TIES TO WELLS MEASURED PERPENDICULAR TO SECTION LINES.

SHEET 2 OF 2



MICHAEL L. POOL, PLS 38304
COLORADO LICENSED PROFESSIONAL LAND SURVEYOR
FOR AND ON BEHALF OF P.F.S., LLC

PREPARED BY:
PFS
Petroleum Field Services, LLC
7535 Hilltop Circle
Denver, CO 80221

FIELD DATE:
07-12-14
DRAWING DATE:
07-23-14
BY:
MDC
CHECKED:
WDW
SURFACE LOCATION:
NW 1/4 SW 1/4,
SEC. 13, T2N, R68W, 6TH P.M.
WELD COUNTY, COLORADO

NOTICE: ACCORDING TO COLORADO LAW YOU MUST COMMENCE ANY LEGAL ACTION BASED UPON ANY DEFECT IN THIS SURVEY WITHIN THREE YEARS AFTER YOU FIRST DISCOVER SUCH DEFECT. IN NO EVENT MAY ANY ACTION BASED UPON ANY DEFECT IN THIS SURVEY BE COMMENCED MORE THAN TEN YEARS FROM THIS SAID DATE OF THIS CERTIFICATION SHOWN HEREON.