

EXTRACTION OIL & GAS

WELD COUNTY, COLORADO (NAD 83)

NW SW SEC. 13 T2N R68W 6th P.M.

JOHNSON TRUST 3

ORIGINAL WELLBORE

07 October, 2014

Plan: PROPOSAL #1





Project: WELD COUNTY, COLORADO (NAD 83)
Site: NW SW SEC. 13 T2N R68W 6th P.M.
Well: JOHNSON TRUST 3
Wellbore: ORIGINAL WELLBORE
Design: PROPOSAL #1

ANNOTATIONS

TVD	MD	Inc	Azi	+N/-S	+E/-W	VSec	Dep	Annotation
1150.0	1150.0	0.00	0.00	0.0	0.0	0.0	0.0	START NUDGE (2°/100ft BUR)
2210.9	2236.8	21.74	72.87	60.0	194.7	15.8	203.7	EOB TO 21.74° INC
5756.1	6053.3	21.74	72.87	476.3	1545.3	125.8	1617.1	END OF TANGENT
6817.0	7140.1	0.00	0.00	536.3	1740.0	141.6	1820.8	EOD TO VERTICAL
6847.0	7170.1	0.00	0.00	536.3	1740.0	141.6	1820.8	KOP (10°/100ft BUR)
7420.0	8070.2	90.00	179.84	-36.7	1741.6	675.0	2393.8	7" ICP - JOHNSON TRUST 3
7420.0	12465.4	90.00	179.84	-4431.9	1754.0	4766.4	6789.0	BHL - JOHNSON TRUST 3

PROPOSED LOCAL COORDINATES:

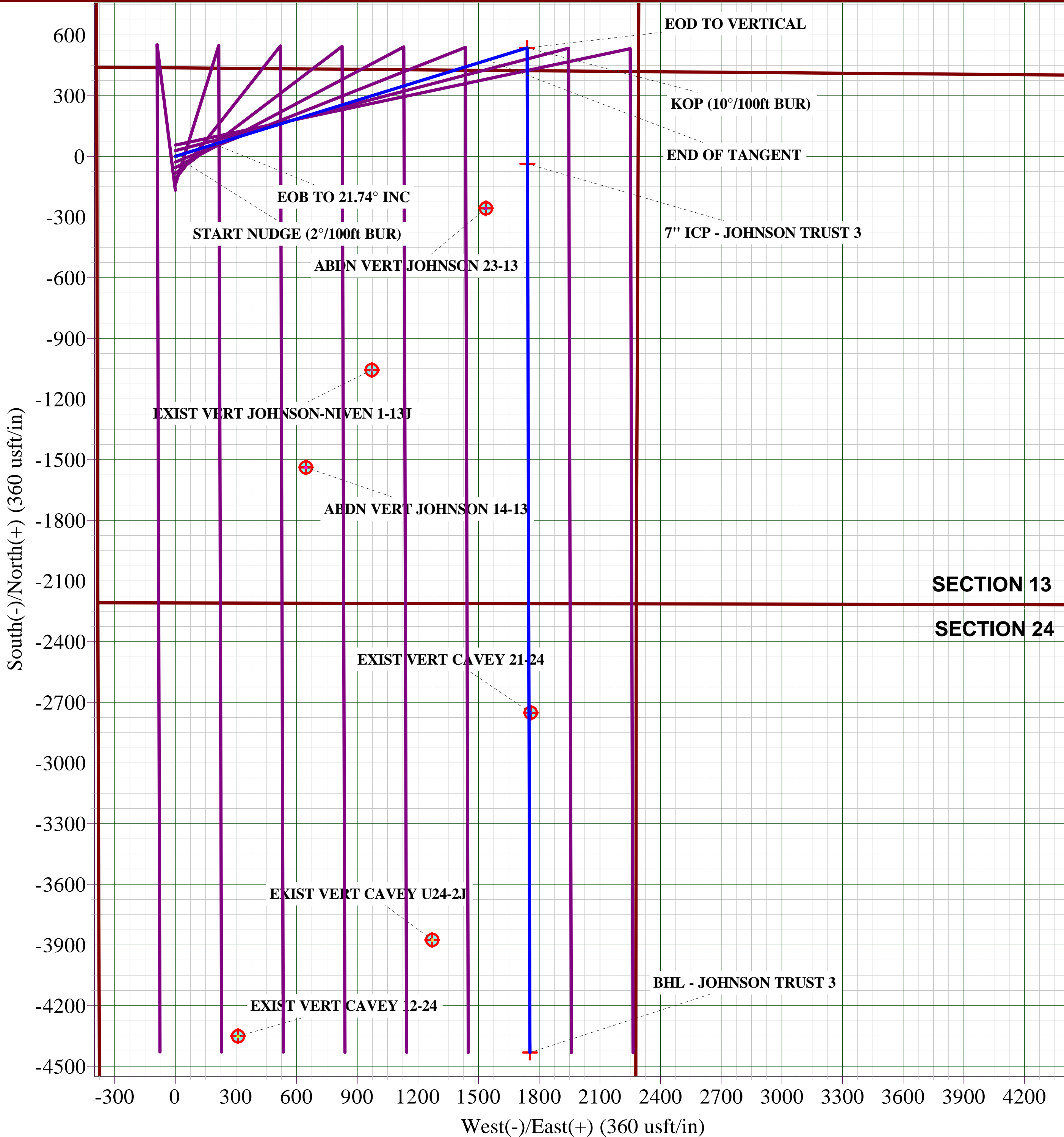
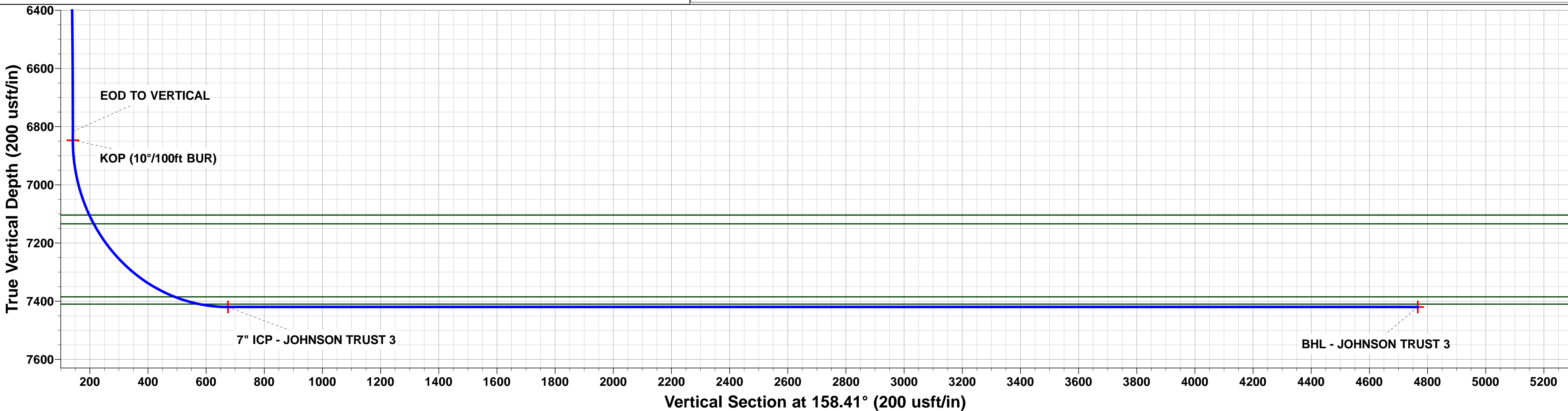
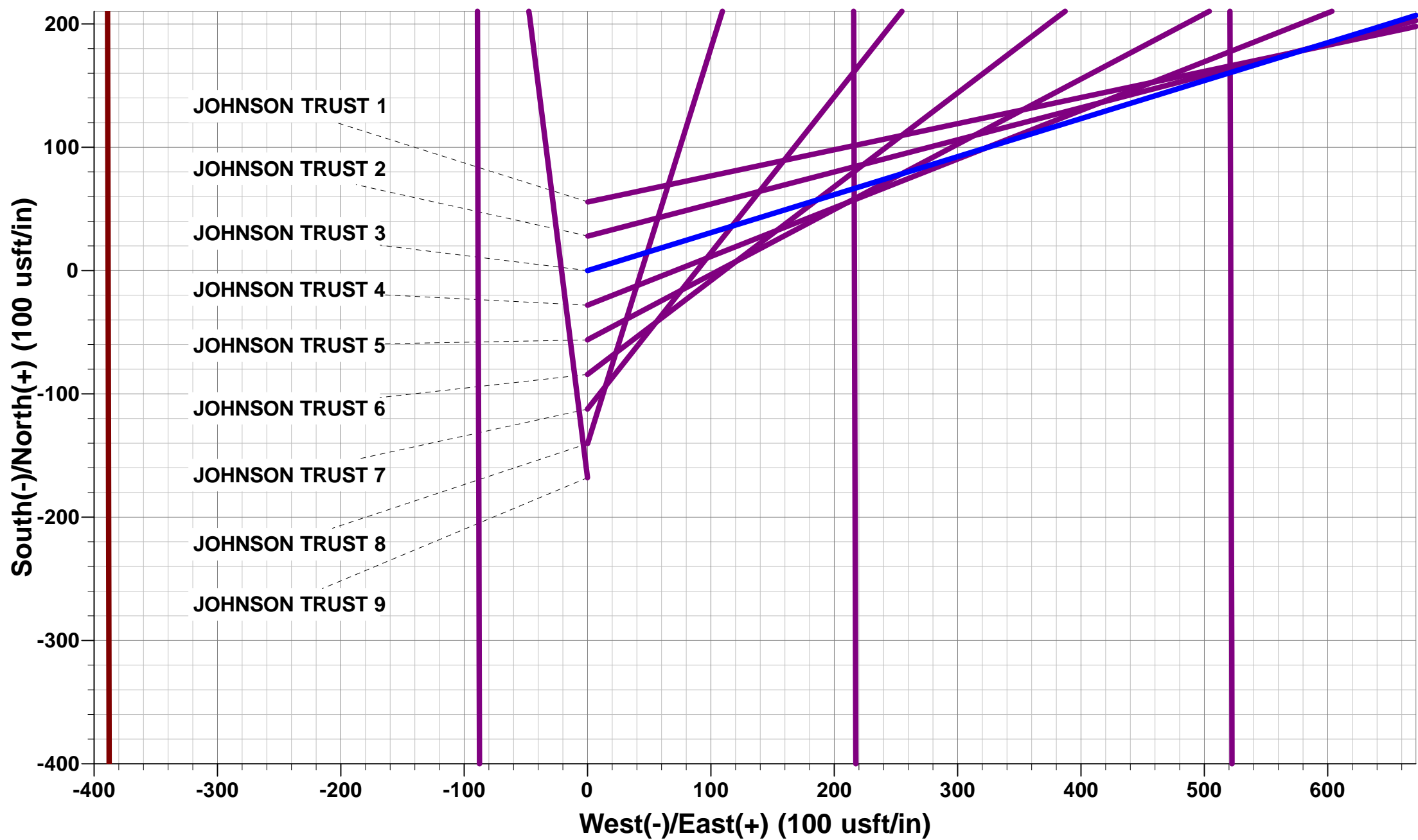
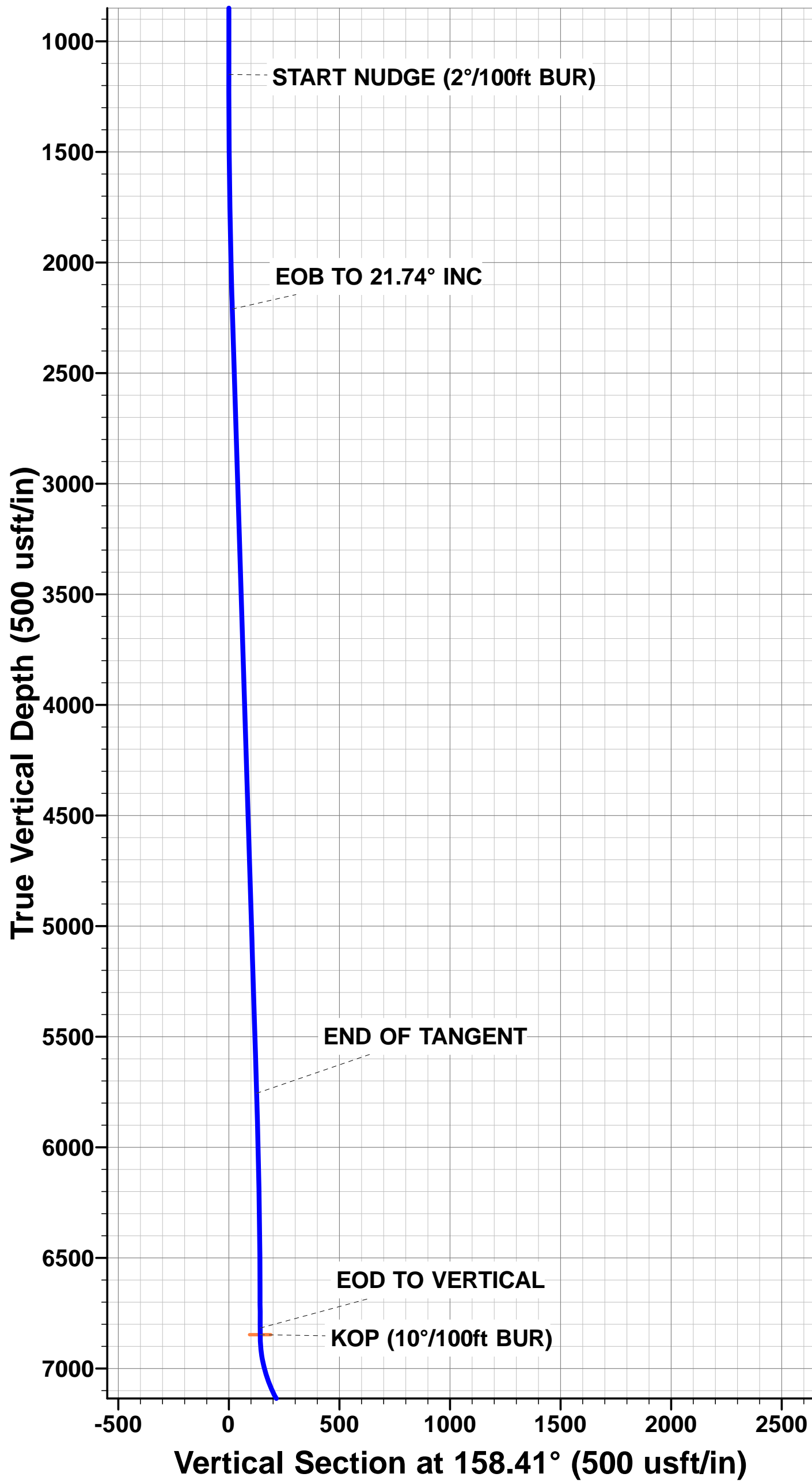
SHL: 2209ft FSL & 389ft FWL Sec 13

7" ICP: 2175ft FSL & 2130ft FWL Sec 13

BHL: 2220ft FNL & 2130ft FWL Sec 24

WELLBORE TARGET DETAILS (LAT/LONG)

Name	TVD	+N/-S	+E/-W	Latitude	Longitude
KOP - JOHNSON TRUST 3	6847.0	536.3	1740.0	40.138965	-104.953397
7" ICP - JOHNSON TRUST 3	7420.0	-36.7	1741.6	40.137392	-104.953391
BHL - JOHNSON TRUST 3	7420.0	-4431.9	1754.0	40.125327	-104.953348



Planning Report



Database:	EDM 5000.1 Single User Db	Local Co-ordinate Reference:	Well JOHNSON TRUST 3
Company:	EXTRACTION OIL & GAS	TVD Reference:	KB-EST @ 4951.0usft (Original Well Elev)
Project:	WELD COUNTY, COLORADO (NAD 83)	MD Reference:	KB-EST @ 4951.0usft (Original Well Elev)
Site:	NW SW SEC. 13 T2N R68W 6th P.M.	North Reference:	True
Well:	JOHNSON TRUST 3	Survey Calculation Method:	Minimum Curvature
Wellbore:	ORIGINAL WELLBORE		
Design:	PROPOSAL #1		

Project	WELD COUNTY, COLORADO (NAD 83)		
Map System:	US State Plane 1983	System Datum:	Mean Sea Level
Geo Datum:	North American Datum 1983		
Map Zone:	Colorado Northern Zone		Using geodetic scale factor

Site	NW SW SEC. 13 T2N R68W 6th P.M.		
Site Position:		Northing:	1,293,448.40 usft
From:	Lat/Long	Easting:	3,151,083.18 usft
Position Uncertainty:	0.0 usft	Slot Radius:	1.10000ft
		Latitude:	40.137646
		Longitude:	-104.959619
		Grid Convergence:	0.35 °

Well	JOHNSON TRUST 3		
Well Position	+N-S	-55.7 usft	Northing:
	+E-W	-0.3 usft	Easting:
Position Uncertainty		0.0 usft	Wellhead Elevation:
			usft
			Latitude:
			Longitude:
			Ground Level:

Wellbore	ORIGINAL WELLBORE				
Magnetics	Model Name	Sample Date	Declination (°)	Dip Angle (°)	Field Strength (nT)
	IGRF2010	07/10/2014	8.50	66.69	52,623

Design	PROPOSAL #1			
Audit Notes:				
Version:	Phase:	PROTOTYPE	Tie On Depth:	0.0
Vertical Section:	Depth From (TVD) (usft)	+N-S (usft)	+E-W (usft)	Direction (°)
	7,420.0	0.0	0.0	158.41

Plan Sections											
MD (usft)	Inc (°)	Azi (°)	Vertical Depth	SS (usft)	+N-S (usft)	+E-W (usft)	Dogleg Rate (°/100usft)	Build Rate (°/100usft)	Turn Rate (°/100usft)	TFO (°)	Target
0.0	0.00	0.00	0.0	-4,951.0	0.0	0.0	0.00	0.00	0.00	0.00	
1,150.0	0.00	0.00	1,150.0	-3,801.0	0.0	0.0	0.00	0.00	0.00	0.00	
2,236.8	21.74	72.87	2,210.9	-2,740.1	60.0	194.7	2.00	2.00	0.00	72.87	
6,053.3	21.74	72.87	5,756.1	805.1	476.3	1,545.3	0.00	0.00	0.00	0.00	
7,140.1	0.00	0.00	6,817.0	1,866.0	536.3	1,740.0	2.00	-2.00	0.00	180.00	
7,170.1	0.00	0.00	6,847.0	1,896.0	536.3	1,740.0	0.00	0.00	0.00	0.00	KOP - JOHNSON T
8,070.2	90.00	179.84	7,420.0	2,469.0	-36.7	1,741.6	10.00	10.00	19.98	179.84	7" ICP - JOHNSON
12,465.4	90.00	179.84	7,420.0	2,469.0	-4,431.9	1,754.0	0.00	0.00	0.00	136.99	BHL - JOHNSON T

Planning Report



Database:	EDM 5000.1 Single User Db	Local Co-ordinate Reference:	Well JOHNSON TRUST 3
Company:	EXTRACTION OIL & GAS	TVD Reference:	KB-EST @ 4951.0usft (Original Well Elev)
Project:	WELD COUNTY, COLORADO (NAD 83)	MD Reference:	KB-EST @ 4951.0usft (Original Well Elev)
Site:	NW SW SEC. 13 T2N R68W 6th P.M.	North Reference:	True
Well:	JOHNSON TRUST 3	Survey Calculation Method:	Minimum Curvature
Wellbore:	ORIGINAL WELLBORE		
Design:	PROPOSAL #1		

Planned Survey

MD (usft)	Inc (°)	Azi (°)	TVD (usft)	SS (usft)	+N/-S (usft)	+E/-W (usft)	Vertical Section (usft)	Dogleg Rate (°/100usft)	Build Rate (°/100usft)	Turn Rate (°/100usft)
0.0	0.00	0.00	0.0	4,951.00	0.0	0.0	0.0	0.00	0.00	0.00
100.0	0.00	0.00	100.0	4,851.00	0.0	0.0	0.0	0.00	0.00	0.00
200.0	0.00	0.00	200.0	4,751.00	0.0	0.0	0.0	0.00	0.00	0.00
300.0	0.00	0.00	300.0	4,651.00	0.0	0.0	0.0	0.00	0.00	0.00
400.0	0.00	0.00	400.0	4,551.00	0.0	0.0	0.0	0.00	0.00	0.00
500.0	0.00	0.00	500.0	4,451.00	0.0	0.0	0.0	0.00	0.00	0.00
600.0	0.00	0.00	600.0	4,351.00	0.0	0.0	0.0	0.00	0.00	0.00
700.0	0.00	0.00	700.0	4,251.00	0.0	0.0	0.0	0.00	0.00	0.00
800.0	0.00	0.00	800.0	4,151.00	0.0	0.0	0.0	0.00	0.00	0.00
900.0	0.00	0.00	900.0	4,051.00	0.0	0.0	0.0	0.00	0.00	0.00
1,000.0	0.00	0.00	1,000.0	3,951.00	0.0	0.0	0.0	0.00	0.00	0.00
1,100.0	0.00	0.00	1,100.0	3,851.00	0.0	0.0	0.0	0.00	0.00	0.00
START NUDGE (2°/100ft BUR)										
1,150.0	0.00	0.00	1,150.0	3,801.00	0.0	0.0	0.0	0.00	0.00	0.00
1,200.0	1.00	72.87	1,200.0	3,751.00	0.1	0.4	0.0	2.00	2.00	0.00
1,300.0	3.00	72.87	1,299.9	3,651.07	1.2	3.8	0.3	2.00	2.00	0.00
1,400.0	5.00	72.87	1,399.7	3,551.32	3.2	10.4	0.8	2.00	2.00	0.00
1,500.0	7.00	72.87	1,499.1	3,451.87	6.3	20.4	1.7	2.00	2.00	0.00
1,600.0	9.00	72.87	1,598.2	3,352.85	10.4	33.7	2.7	2.00	2.00	0.00
1,700.0	11.00	72.87	1,696.6	3,254.37	15.5	50.3	4.1	2.00	2.00	0.00
1,800.0	13.00	72.87	1,794.4	3,156.56	21.6	70.2	5.7	2.00	2.00	0.00
1,900.0	15.00	72.87	1,891.5	3,059.54	28.8	93.3	7.6	2.00	2.00	0.00
2,000.0	17.00	72.87	1,987.6	2,963.42	36.9	119.6	9.7	2.00	2.00	0.00
2,100.0	19.00	72.87	2,082.7	2,868.32	46.0	149.2	12.1	2.00	2.00	0.00
2,200.0	21.00	72.87	2,176.6	2,774.35	56.0	181.8	14.8	2.00	2.00	0.00
EOB TO 21.74° INC										
2,236.8	21.74	72.87	2,210.9	2,740.06	60.0	194.7	15.8	2.00	2.00	0.00
2,300.0	21.74	72.87	2,269.6	2,681.38	66.9	217.0	17.7	0.00	0.00	0.00
2,400.0	21.74	72.87	2,362.5	2,588.49	77.8	252.4	20.5	0.00	0.00	0.00
2,500.0	21.74	72.87	2,455.4	2,495.60	88.7	287.8	23.4	0.00	0.00	0.00
2,600.0	21.74	72.87	2,548.3	2,402.71	99.6	323.2	26.3	0.00	0.00	0.00
2,700.0	21.74	72.87	2,641.2	2,309.82	110.5	358.6	29.2	0.00	0.00	0.00
2,800.0	21.74	72.87	2,734.1	2,216.93	121.4	394.0	32.1	0.00	0.00	0.00
2,900.0	21.74	72.87	2,827.0	2,124.04	132.3	429.4	34.9	0.00	0.00	0.00
3,000.0	21.74	72.87	2,919.9	2,031.15	143.2	464.8	37.8	0.00	0.00	0.00
3,100.0	21.74	72.87	3,012.7	1,938.26	154.2	500.1	40.7	0.00	0.00	0.00
3,200.0	21.74	72.87	3,105.6	1,845.37	165.1	535.5	43.6	0.00	0.00	0.00
3,300.0	21.74	72.87	3,198.5	1,752.48	176.0	570.9	46.5	0.00	0.00	0.00
3,400.0	21.74	72.87	3,291.4	1,659.59	186.9	606.3	49.4	0.00	0.00	0.00
3,500.0	21.74	72.87	3,384.3	1,566.70	197.8	641.7	52.2	0.00	0.00	0.00
3,600.0	21.74	72.87	3,477.2	1,473.81	208.7	677.1	55.1	0.00	0.00	0.00
3,700.0	21.74	72.87	3,570.1	1,380.92	219.6	712.5	58.0	0.00	0.00	0.00
PARKMAN										
3,766.7	21.74	72.87	3,632.0	1,319.00	226.9	736.1	59.9	0.00	0.00	0.00
3,800.0	21.74	72.87	3,663.0	1,288.03	230.5	747.9	60.9	0.00	0.00	0.00
3,900.0	21.74	72.87	3,755.9	1,195.14	241.4	783.3	63.8	0.00	0.00	0.00
4,000.0	21.74	72.87	3,848.8	1,102.25	252.3	818.7	66.6	0.00	0.00	0.00
4,100.0	21.74	72.87	3,941.6	1,009.36	263.2	854.1	69.5	0.00	0.00	0.00
4,200.0	21.74	72.87	4,034.5	916.47	274.1	889.4	72.4	0.00	0.00	0.00
4,300.0	21.74	72.87	4,127.4	823.58	285.1	924.8	75.3	0.00	0.00	0.00
4,400.0	21.74	72.87	4,220.3	730.69	296.0	960.2	78.2	0.00	0.00	0.00
4,500.0	21.74	72.87	4,313.2	637.80	306.9	995.6	81.0	0.00	0.00	0.00
4,600.0	21.74	72.87	4,406.1	544.91	317.8	1,031.0	83.9	0.00	0.00	0.00

Planning Report



Database:	EDM 5000.1 Single User Db	Local Co-ordinate Reference:	Well JOHNSON TRUST 3
Company:	EXTRACTION OIL & GAS	TVD Reference:	KB-EST @ 4951.0usft (Original Well Elev)
Project:	WELD COUNTY, COLORADO (NAD 83)	MD Reference:	KB-EST @ 4951.0usft (Original Well Elev)
Site:	NW SW SEC. 13 T2N R68W 6th P.M.	North Reference:	True
Well:	JOHNSON TRUST 3	Survey Calculation Method:	Minimum Curvature
Wellbore:	ORIGINAL WELLBORE		
Design:	PROPOSAL #1		

Planned Survey

MD (usft)	Inc (°)	Azi (°)	TVD (usft)	SS (usft)	+N/-S (usft)	+E/-W (usft)	Vertical Section (usft)	Dogleg Rate (°/100usft)	Build Rate (°/100usft)	Turn Rate (°/100usft)
SUSSEX										
4,647.3	21.74	72.87	4,450.0	501.00	322.9	1,047.7	85.3	0.00	0.00	0.00
4,700.0	21.74	72.87	4,499.0	452.02	328.7	1,066.4	86.8	0.00	0.00	0.00
4,800.0	21.74	72.87	4,591.9	359.13	339.6	1,101.8	89.7	0.00	0.00	0.00
4,900.0	21.74	72.87	4,684.8	266.24	350.5	1,137.2	92.6	0.00	0.00	0.00
5,000.0	21.74	72.87	4,777.6	173.35	361.4	1,172.6	95.4	0.00	0.00	0.00
5,100.0	21.74	72.87	4,870.5	80.46	372.3	1,208.0	98.3	0.00	0.00	0.00
SHANNON										
5,142.5	21.74	72.87	4,910.0	41.00	376.9	1,223.0	99.5	0.00	0.00	0.00
5,200.0	21.74	72.87	4,963.4	-12.43	383.2	1,243.4	101.2	0.00	0.00	0.00
5,300.0	21.74	72.87	5,056.3	-105.32	394.1	1,278.7	104.1	0.00	0.00	0.00
5,400.0	21.74	72.87	5,149.2	-198.21	405.0	1,314.1	107.0	0.00	0.00	0.00
5,500.0	21.74	72.87	5,242.1	-291.10	415.9	1,349.5	109.8	0.00	0.00	0.00
5,600.0	21.74	72.87	5,335.0	-383.99	426.9	1,384.9	112.7	0.00	0.00	0.00
5,700.0	21.74	72.87	5,427.9	-476.88	437.8	1,420.3	115.6	0.00	0.00	0.00
5,800.0	21.74	72.87	5,520.8	-569.77	448.7	1,455.7	118.5	0.00	0.00	0.00
5,900.0	21.74	72.87	5,613.7	-662.66	459.6	1,491.1	121.4	0.00	0.00	0.00
6,000.0	21.74	72.87	5,706.5	-755.55	470.5	1,526.5	124.2	0.00	0.00	0.00
END OF TANGENT										
6,053.3	21.74	72.87	5,756.1	-805.06	476.3	1,545.3	125.8	0.00	0.00	0.00
6,100.0	20.80	72.87	5,799.6	-848.57	481.3	1,561.5	127.1	2.00	-2.00	0.00
6,200.0	18.80	72.87	5,893.7	-942.66	491.3	1,593.9	129.7	2.00	-2.00	0.00
6,300.0	16.80	72.87	5,988.9	-1,037.86	500.3	1,623.1	132.1	2.00	-2.00	0.00
6,400.0	14.80	72.87	6,085.1	-1,134.08	508.3	1,649.1	134.2	2.00	-2.00	0.00
6,500.0	12.80	72.87	6,182.2	-1,231.19	515.3	1,671.9	136.1	2.00	-2.00	0.00
6,600.0	10.80	72.87	6,280.1	-1,329.07	521.3	1,691.5	137.7	2.00	-2.00	0.00
6,700.0	8.80	72.87	6,378.6	-1,427.60	526.4	1,707.8	139.0	2.00	-2.00	0.00
6,800.0	6.80	72.87	6,477.7	-1,526.67	530.4	1,720.7	140.1	2.00	-2.00	0.00
6,900.0	4.80	72.87	6,577.2	-1,626.15	533.3	1,730.4	140.8	2.00	-2.00	0.00
7,000.0	2.80	72.87	6,676.9	-1,725.93	535.3	1,736.7	141.4	2.00	-2.00	0.00
7,100.0	0.80	72.87	6,776.9	-1,825.87	536.2	1,739.7	141.6	2.00	-2.00	0.00
EOD TO VERTICAL										
7,140.1	0.00	0.00	6,817.0	-1,866.00	536.3	1,740.0	141.6	2.00	-2.00	0.00
KOP (10°/100ft BUR)										
7,170.1	0.00	0.00	6,847.0	-1,896.00	536.3	1,740.0	141.6	0.00	0.00	0.00
7,200.0	2.99	179.84	6,876.9	-1,925.86	535.5	1,740.0	142.4	10.00	10.00	0.00
7,300.0	12.99	179.84	6,975.8	-2,024.76	521.6	1,740.0	155.3	10.00	10.00	0.00
7,400.0	22.99	179.84	7,070.8	-2,119.76	490.8	1,740.1	184.0	10.00	10.00	0.00
SHARON SPRINGS										
7,436.6	26.65	179.84	7,104.0	-2,153.00	475.4	1,740.2	198.3	10.00	10.00	0.00
NIOBRARA										
7,470.7	30.06	179.84	7,134.0	-2,183.00	459.2	1,740.2	213.4	10.00	10.00	0.00
7,500.0	32.98	179.84	7,159.0	-2,207.95	443.9	1,740.3	227.6	10.00	10.00	0.00
7,600.0	42.98	179.84	7,237.7	-2,286.67	382.5	1,740.4	284.8	10.00	10.00	0.00
7,700.0	52.98	179.84	7,304.5	-2,353.52	308.3	1,740.6	353.9	10.00	10.00	0.00
7,800.0	62.98	179.84	7,357.5	-2,406.47	223.6	1,740.9	432.7	10.00	10.00	0.00
FT HAYS										
7,868.9	69.87	179.84	7,385.0	-2,434.00	160.5	1,741.1	491.5	10.00	10.00	0.00
7,900.0	72.98	179.84	7,394.9	-2,443.91	131.0	1,741.2	518.9	10.00	10.00	0.00
CODELL										
7,963.0	79.28	179.84	7,410.0	-2,459.00	69.9	1,741.3	575.8	10.00	10.00	0.00
8,000.0	82.98	179.84	7,415.7	-2,464.71	33.3	1,741.4	609.8	10.00	10.00	0.00
7" ICP - JOHNSON TRUST 3										

Planning Report



Database:	EDM 5000.1 Single User Db	Local Co-ordinate Reference:	Well JOHNSON TRUST 3
Company:	EXTRACTION OIL & GAS	TVD Reference:	KB-EST @ 4951.0usft (Original Well Elev)
Project:	WELD COUNTY, COLORADO (NAD 83)	MD Reference:	KB-EST @ 4951.0usft (Original Well Elev)
Site:	NW SW SEC. 13 T2N R68W 6th P.M.	North Reference:	True
Well:	JOHNSON TRUST 3	Survey Calculation Method:	Minimum Curvature
Wellbore:	ORIGINAL WELLBORE		
Design:	PROPOSAL #1		

Planned Survey

MD (usft)	Inc (°)	Azi (°)	TVD (usft)	SS (usft)	+N/-S (usft)	+E/-W (usft)	Vertical Section (usft)	Dogleg Rate (°/100usft)	Build Rate (°/100usft)	Turn Rate (°/100usft)
8,070.2	90.00	179.84	7,420.0	-2,469.00	-36.7	1,741.6	675.0	10.00	10.00	0.00
8,100.0	90.00	179.84	7,420.0	-2,469.00	-66.5	1,741.7	702.8	0.00	0.00	0.00
8,200.0	90.00	179.84	7,420.0	-2,468.99	-166.5	1,742.0	795.9	0.00	0.00	0.00
8,300.0	90.00	179.84	7,420.0	-2,468.99	-266.5	1,742.3	888.9	0.00	0.00	0.00
8,400.0	90.00	179.84	7,420.0	-2,468.99	-366.5	1,742.6	982.0	0.00	0.00	0.00
8,500.0	90.00	179.84	7,420.0	-2,468.98	-466.5	1,742.9	1,075.1	0.00	0.00	0.00
8,600.0	90.00	179.84	7,420.0	-2,468.98	-566.5	1,743.1	1,168.2	0.00	0.00	0.00
8,700.0	90.00	179.84	7,420.0	-2,468.97	-666.5	1,743.4	1,261.3	0.00	0.00	0.00
8,800.0	90.00	179.84	7,420.0	-2,468.97	-766.5	1,743.7	1,354.4	0.00	0.00	0.00
8,900.0	90.00	179.84	7,420.0	-2,468.97	-866.5	1,744.0	1,447.5	0.00	0.00	0.00
9,000.0	90.00	179.84	7,420.0	-2,468.97	-966.5	1,744.3	1,540.6	0.00	0.00	0.00
9,100.0	90.00	179.84	7,420.0	-2,468.96	-1,066.5	1,744.6	1,633.6	0.00	0.00	0.00
9,200.0	90.00	179.84	7,420.0	-2,468.96	-1,166.5	1,744.8	1,726.7	0.00	0.00	0.00
9,300.0	90.00	179.84	7,420.0	-2,468.96	-1,266.5	1,745.1	1,819.8	0.00	0.00	0.00
9,400.0	90.00	179.84	7,420.0	-2,468.96	-1,366.5	1,745.4	1,912.9	0.00	0.00	0.00
9,500.0	90.00	179.84	7,420.0	-2,468.96	-1,466.5	1,745.7	2,006.0	0.00	0.00	0.00
9,600.0	90.00	179.84	7,420.0	-2,468.95	-1,566.5	1,746.0	2,099.1	0.00	0.00	0.00
9,700.0	90.00	179.84	7,420.0	-2,468.95	-1,666.5	1,746.3	2,192.2	0.00	0.00	0.00
9,800.0	90.00	179.84	7,420.0	-2,468.95	-1,766.5	1,746.5	2,285.2	0.00	0.00	0.00
9,900.0	90.00	179.84	7,420.0	-2,468.95	-1,866.5	1,746.8	2,378.3	0.00	0.00	0.00
10,000.0	90.00	179.84	7,419.9	-2,468.95	-1,966.5	1,747.1	2,471.4	0.00	0.00	0.00
10,100.0	90.00	179.84	7,419.9	-2,468.95	-2,066.5	1,747.4	2,564.5	0.00	0.00	0.00
10,200.0	90.00	179.84	7,419.9	-2,468.95	-2,166.5	1,747.7	2,657.6	0.00	0.00	0.00
10,300.0	90.00	179.84	7,419.9	-2,468.95	-2,266.5	1,747.9	2,750.7	0.00	0.00	0.00
10,400.0	90.00	179.84	7,419.9	-2,468.95	-2,366.5	1,748.2	2,843.8	0.00	0.00	0.00
10,500.0	90.00	179.84	7,419.9	-2,468.95	-2,466.5	1,748.5	2,936.8	0.00	0.00	0.00
10,600.0	90.00	179.84	7,420.0	-2,468.95	-2,566.5	1,748.8	3,029.9	0.00	0.00	0.00
10,700.0	90.00	179.84	7,420.0	-2,468.95	-2,666.5	1,749.1	3,123.0	0.00	0.00	0.00
10,800.0	90.00	179.84	7,420.0	-2,468.95	-2,766.5	1,749.3	3,216.1	0.00	0.00	0.00
10,900.0	90.00	179.84	7,420.0	-2,468.95	-2,866.5	1,749.6	3,309.2	0.00	0.00	0.00
11,000.0	90.00	179.84	7,420.0	-2,468.95	-2,966.5	1,749.9	3,402.3	0.00	0.00	0.00
11,100.0	90.00	179.84	7,420.0	-2,468.96	-3,066.5	1,750.2	3,495.4	0.00	0.00	0.00
11,200.0	90.00	179.84	7,420.0	-2,468.96	-3,166.5	1,750.5	3,588.4	0.00	0.00	0.00
11,300.0	90.00	179.84	7,420.0	-2,468.96	-3,266.5	1,750.7	3,681.5	0.00	0.00	0.00
11,400.0	90.00	179.84	7,420.0	-2,468.96	-3,366.5	1,751.0	3,774.6	0.00	0.00	0.00
11,500.0	90.00	179.84	7,420.0	-2,468.97	-3,466.5	1,751.3	3,867.7	0.00	0.00	0.00
11,600.0	90.00	179.84	7,420.0	-2,468.97	-3,566.5	1,751.6	3,960.8	0.00	0.00	0.00
11,700.0	90.00	179.84	7,420.0	-2,468.97	-3,666.5	1,751.8	4,053.9	0.00	0.00	0.00
11,800.0	90.00	179.84	7,420.0	-2,468.97	-3,766.5	1,752.1	4,147.0	0.00	0.00	0.00
11,900.0	90.00	179.84	7,420.0	-2,468.98	-3,866.5	1,752.4	4,240.0	0.00	0.00	0.00
12,000.0	90.00	179.84	7,420.0	-2,468.98	-3,966.5	1,752.7	4,333.1	0.00	0.00	0.00
12,100.0	90.00	179.84	7,420.0	-2,468.98	-4,066.5	1,753.0	4,426.2	0.00	0.00	0.00
12,200.0	90.00	179.84	7,420.0	-2,468.99	-4,166.5	1,753.2	4,519.3	0.00	0.00	0.00
12,300.0	90.00	179.84	7,420.0	-2,468.99	-4,266.5	1,753.5	4,612.4	0.00	0.00	0.00
12,400.0	90.00	179.84	7,420.0	-2,469.00	-4,366.5	1,753.8	4,705.5	0.00	0.00	0.00
BHL - JOHNSON TRUST 3										
12,465.4	90.00	179.84	7,420.0	-2,469.00	-4,431.9	1,754.0	4,766.4	0.00	0.00	0.00

Database:	EDM 5000.1 Single User Db	Local Co-ordinate Reference:	Well JOHNSON TRUST 3
Company:	EXTRACTION OIL & GAS	TVD Reference:	KB-EST @ 4951.0usft (Original Well Elev)
Project:	WELD COUNTY, COLORADO (NAD 83)	MD Reference:	KB-EST @ 4951.0usft (Original Well Elev)
Site:	NW SW SEC. 13 T2N R68W 6th P.M.	North Reference:	True
Well:	JOHNSON TRUST 3	Survey Calculation Method:	Minimum Curvature
Wellbore:	ORIGINAL WELLBORE		
Design:	PROPOSAL #1		

Formations

MD (usft)	TVD (usft)	Name	Lithology	Dip (°)	Dip Direction (°)
3,766.7	3,632.0	PARKMAN			
4,647.3	4,450.0	SUSSEX			
5,142.5	4,910.0	SHANNON			
7,436.6	7,104.0	SHARON SPRINGS			
7,470.7	7,134.0	NIOBRARA			
7,868.9	7,385.0	FT HAYS			
7,963.0	7,410.0	CODELL			

Plan Annotations

MD (usft)	TVD (usft)	Local Coordinates		Comment
		+N/-S (usft)	+E/-W (usft)	
1,150.0	1,150.0	0.0	0.0	START NUDGE (2°/100ft BUR)
2,236.8	2,210.9	60.0	194.7	EOB TO 21.74° INC
6,053.3	5,756.1	476.3	1,545.3	END OF TANGENT
7,140.1	6,817.0	536.3	1,740.0	EOD TO VERTICAL
7,170.1	6,847.0	536.3	1,740.0	KOP (10°/100ft BUR)
8,070.2	7,420.0	-36.7	1,741.6	7" ICP - JOHNSON TRUST 3
12,465.4	7,420.0	-4,431.9	1,754.0	BHL - JOHNSON TRUST 3