



Weatherford®

Tooke Rockies, Inc.
(A Weatherford Company)

884 Implement Dr.
Dickinson, ND 58601
701-227-4408

717 West Platte
PO BOX 435
Casper, WY 82601
307-265-2124

Surface Logging Systems

Scale 1:240 (5"=100') Imperial
Measured Depth Log

Well Name: State Elbert 1H(Build Sec.)

API: 05-005-07222-00

Location: NE/NW, SEC 2 T5S-R65W,, Arapahoe County, CO

License Number:

Region: DJ Basin

Spud Date: 7/31/2014

Drilling Completed: 8/25/2014

Surface Coordinates: 1367' FNL & 387' FEL. NE/NW, SEC 2 T5S-R65W, Arapahoe County, CO.

Bottom Hole From SHL, 694.83' FNL, 717' FWL, Sec. 1, T5S-R65W, Arapahoe County,CO.
Coordinates:

Ground Elevation (ft): 5857'

K.B. Elevation (ft): 5881'

Logged Interval (ft): 7300'

To: 8391'

Total Depth (ft): 8391'

Formation: Niobrara

Type of Drilling Fluid: INVERT/OBM

Printed by MUD.LOG from WellSight Systems 1-800-447-1534 www.WellSight.com

OPERATOR

Company: Conoco/Phillips

Address: Attn: Abby Tomkiewicz

Three Westlake Park, Rm 14013

550 Westlake Park Blvd,Houston, TX 77079,Office: 832-486-2543.

GEOLOGIST

Name: Todd Thiesse, Richard Wagner

Company: Tooke Rockies/ Weatherford SLS

Address: PO Box 435

Casper, WY. 82602

307.265.2124

Supervision

Project Geologist:Zachary Mester- Conoco/Phillips

Drilling Engineer: Gary Hamilton, Ben Tolman, James Hayes- Conoco/Phillips

Drilling Sup: Bob Strickler- Conoco/Phillips

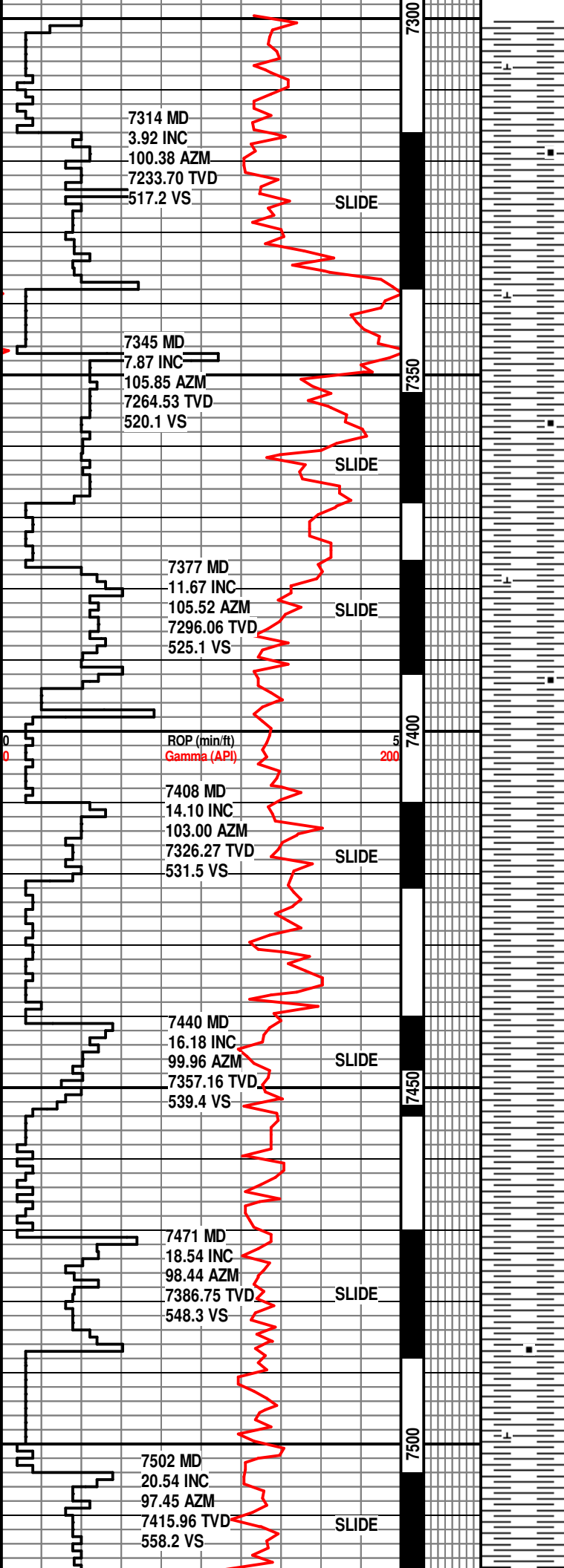
Company Rep: Richard Perez, Wes Evans, (Day Leads)

Company Rep: Clint Valentine, Mike Weatherly (Night Leads)

Well Site Safety: Rainey Schexnider, Gerald Doty

Contact Geologist: Abby Tomkiewicz, Abby Thornton- Conoco/Phillips

Drilling & Comp. Mgr: Derly Gonzalez-Conoco/Phillips



SH-DK GY-GY, , BLKY, SBWXY,
SL CARB, SL CALC, SFT-FRM.

SH- DK GY, , BLKY, SBWXY,
SL CARB, SL CALC, SFT-FRM.

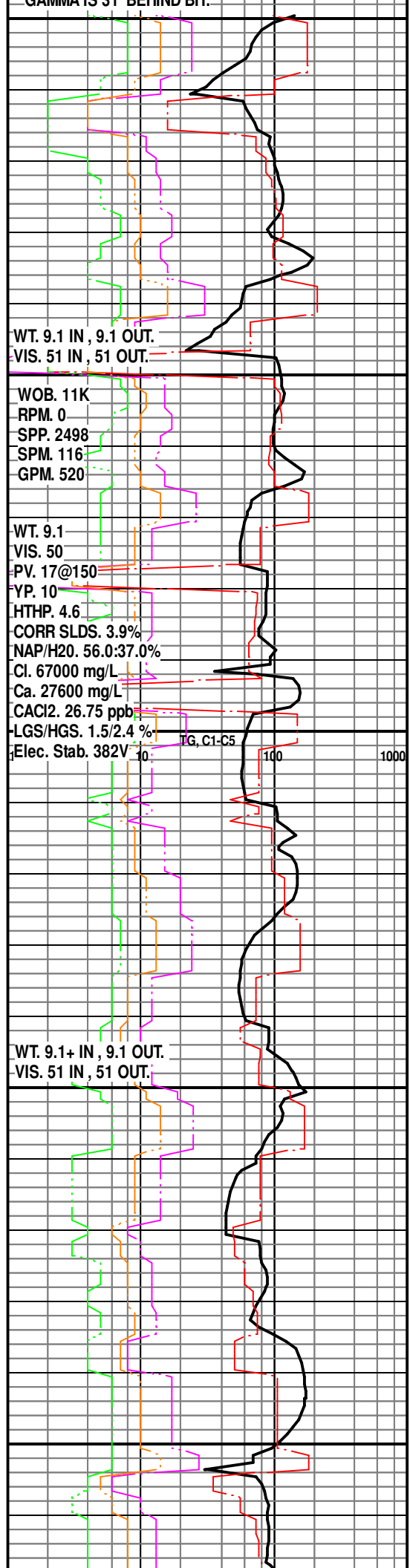
SH- DK GY, , BLKY, SBWXY,
SL CARB, SL CALC, SFT-FRM.

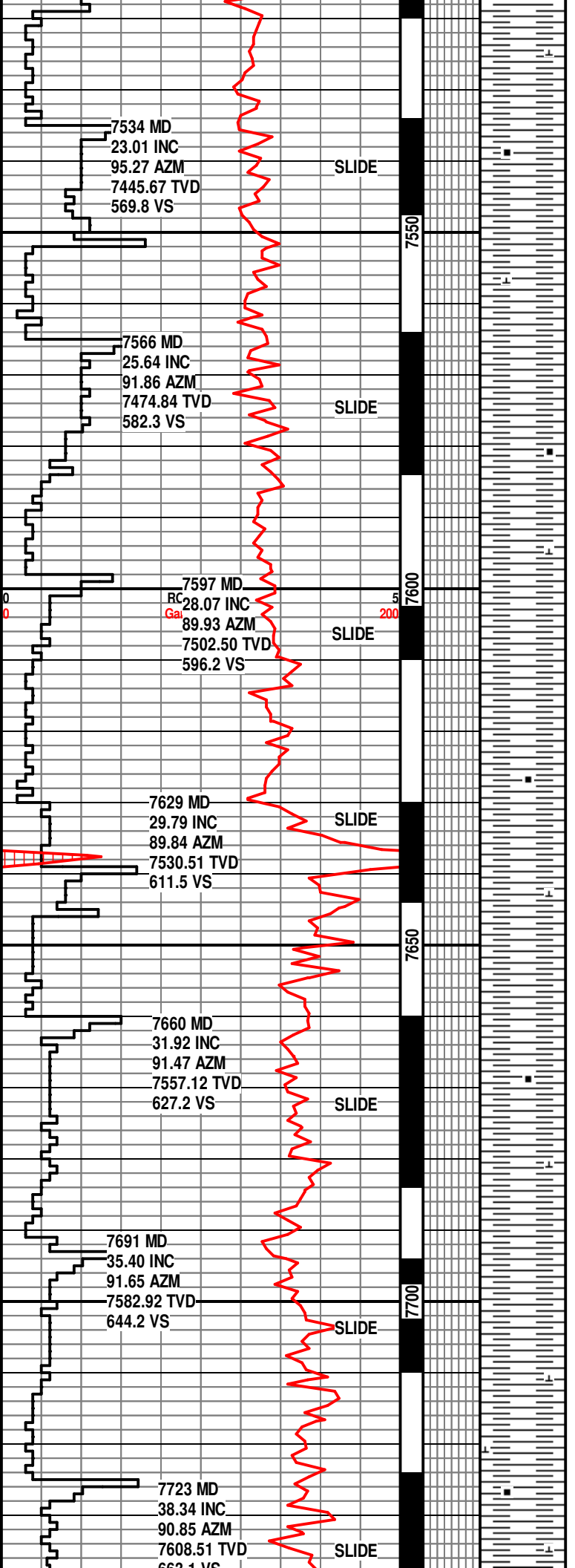
SH- DK GY, , BLKY, SBWXY,
SL CARB, SL CALC, SFT-FRM.

SH- M-DK GY, OCC DK BRN,
BLKY, SBWXY, OCC SLTY, SL
CARB, SL CALC-CALC,
SFT-FRM.

SH- M-DK GY, OCC DK BRN,
BLKY, SBWXY, OCC SLTY, SL
CARB, SL CALC-CALC,
SFT-FRM.

SH- GY, DK GY, BLKY, SBWXY,
TR SLTY, SL CARB, SL CALC,
SFT-FRM.





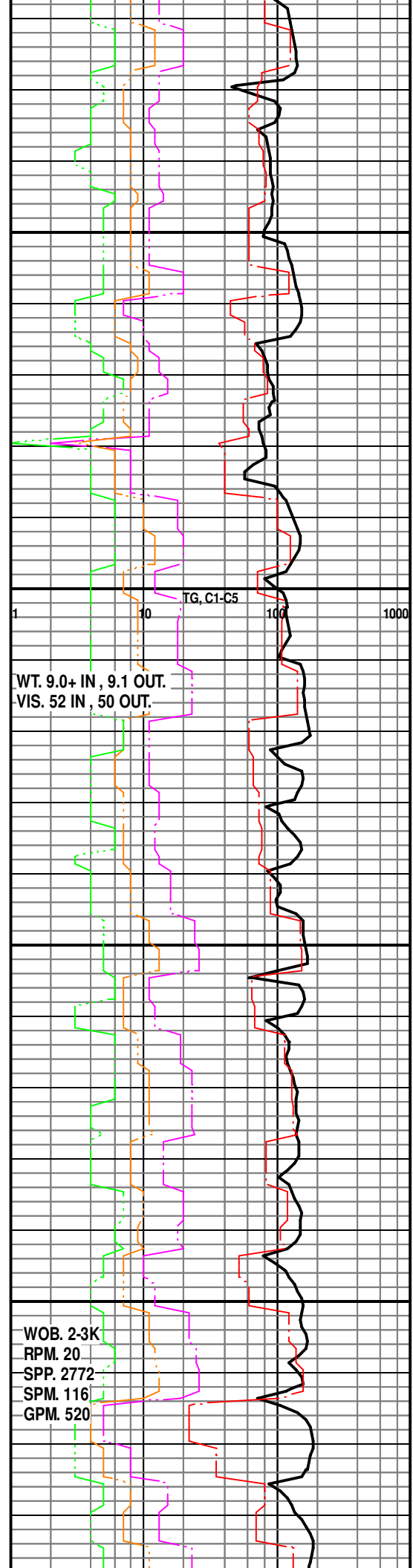
SH- GY, DK GY, BLKY, SBWXY,
TR SLTY, SL CARB, SL CALC,
SFT-FRM.

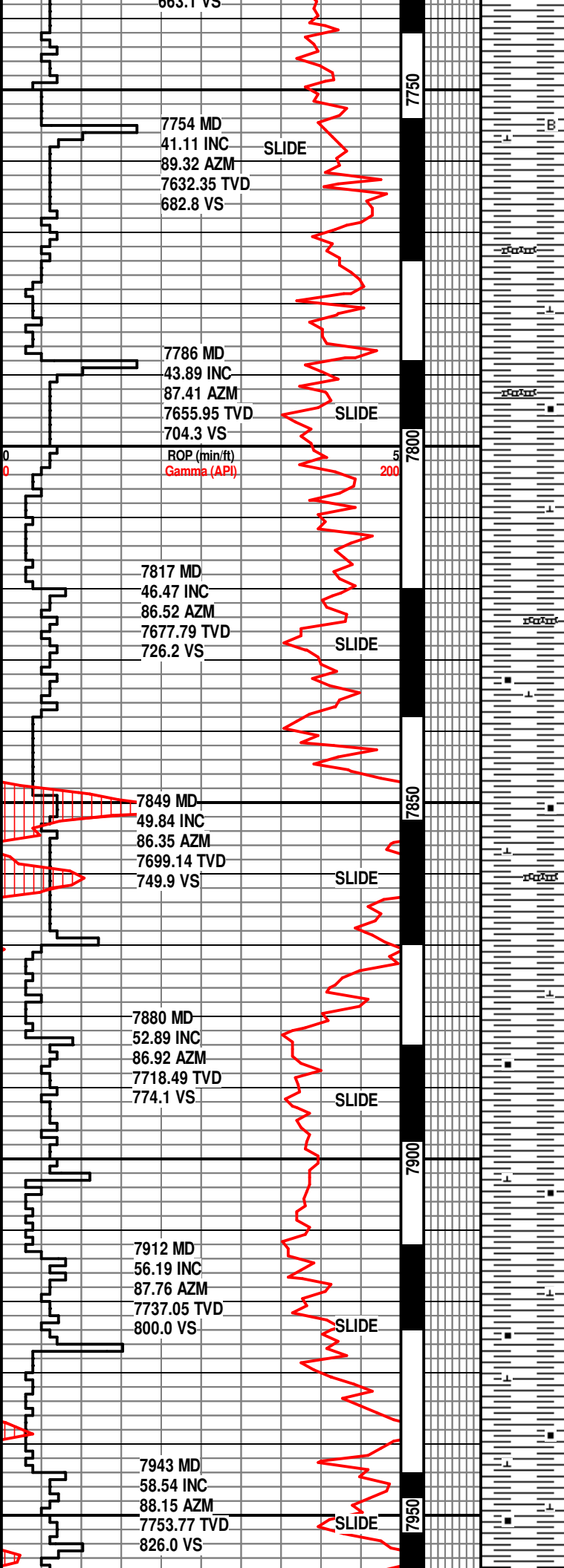
SH- GY-LT GY, SME DK GY,
BLKY, SBWXY, SL CARB,
CALC, V SFT-FRM.

SH- GY-LT GY, SME DK GY,
BLKY, SBWXY, SL CARB,
CALC, V SFT-FRM.

SH- GY-LT GY, SME DK GY,
BLKY, SBWXY, SL CARB,
CALC, V SFT-FRM.

SH- GY-LT GY, DK GY, BLKY,
SBWXY, SL CARB, SL INCR
CALC, V SFT-FRM.





SH- GY-LT GY, DK GY, BLKY,
SBWXY, SL CARB, CALC, V
SFT-FRM.

SMPL TOP SHARON SPRINGS AT 7752'.

SH- GY-DK GY, SME LT GY,
BLKY, SBWXY, SL CARB,
CALC, V SFT-FRM. W/ BENT- LT
GY, TAN-BUFF.

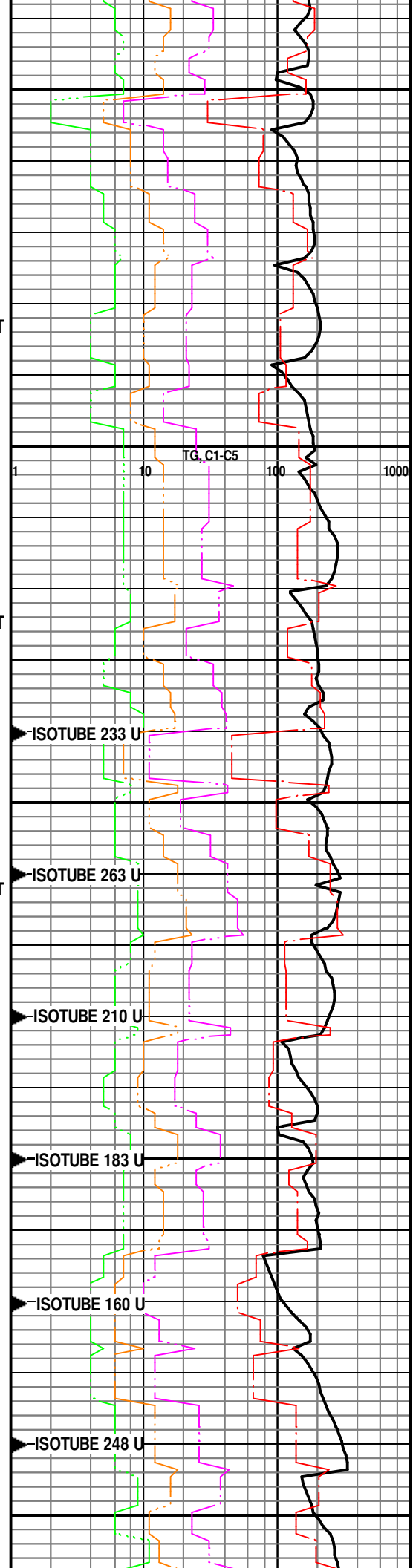
SH- GY-DK GY, SME LT GY,
BLKY, SBWXY, SL CARB,
CALC, V SFT-FRM. W/ BENT- LT
GY, TAN-BUFF.

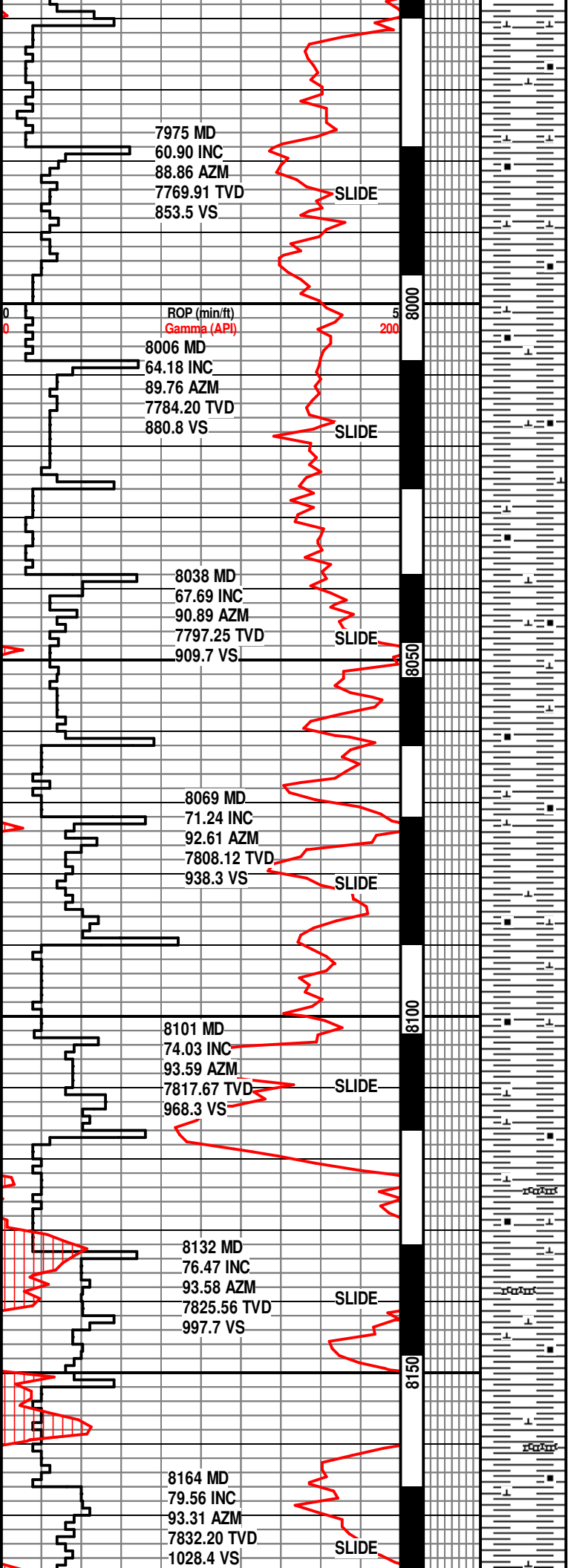
SH- GY-DK GY, SME LT GY,
BLKY, SBWXY, SL CARB,
CALC, V SFT-FRM. W/ BENT- LT
GY, TAN-BUFF.

SH- GY-DK GY, OCC DK BRN,
BLKY, SBWXY, SL INCR IN
CARB, CALC, V SFT-FRM.

SH- GY-DK GY, OCC DK BRN,
BLKY, SBWXY, SL INCR IN
CARB, CALC, V SFT-FRM.

SH- GY-DK GY, OCC DK BRN,
BLKY, SBWXY, SL INCR IN
CARB, INCR IN CALC, V
SFT-FRM.





SH- GY-DK GY, OCC DK BRN,
BLKY, SBWXY, CARB, CALC, V
SFT-FRM.

SH- GY-DK GY, OCC DK BRN,
BLKY, SBWXY, CARB, CALC, V
SFT-FRM.

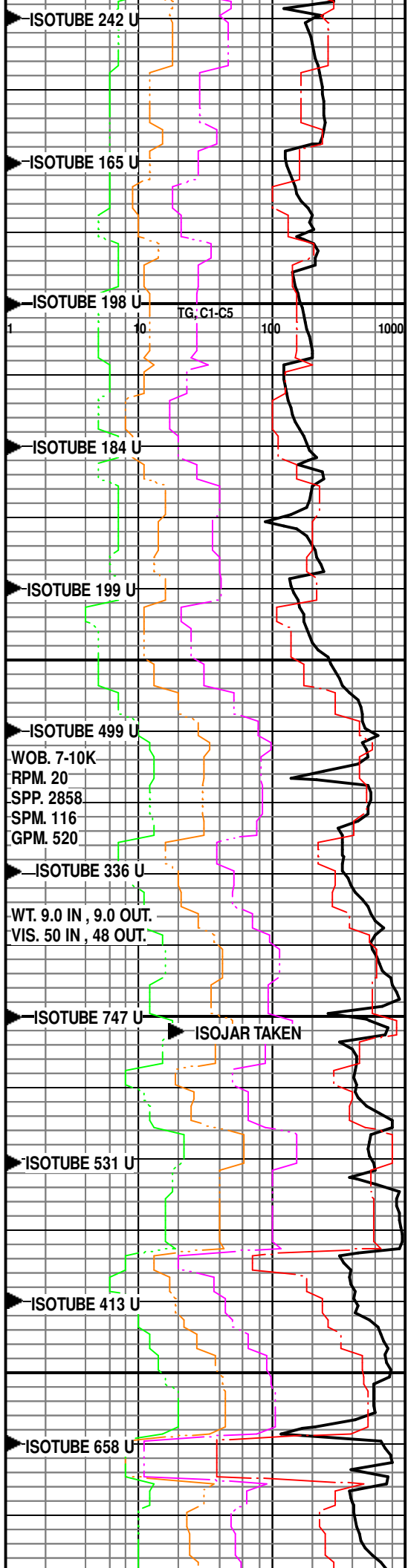
SMPL TOP NIOBRARA
AT 8034'.

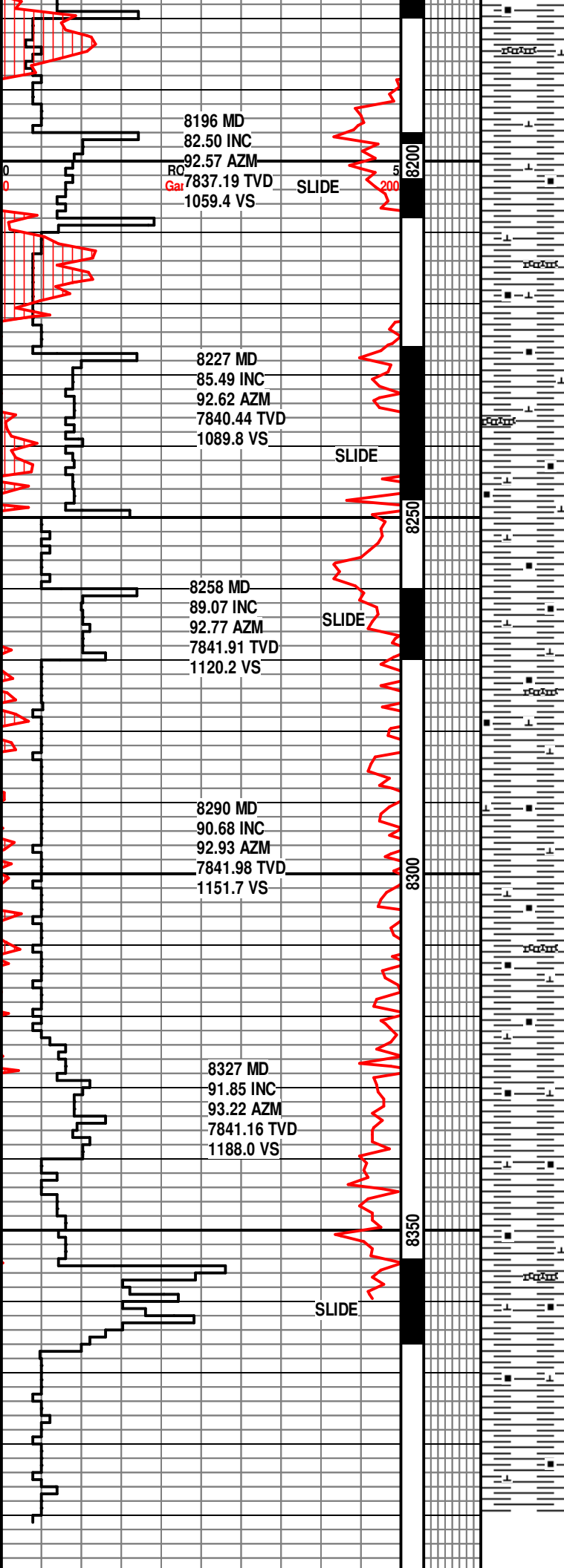
SH- DK GY-BLK, SME GY,
BLKY-PLTY, SBWXY, CARB, V
CALC-LMY, SFT-FRM.

SH- DK GY-BLK, SME GY,
BLKY-PLTY, SBWXY, CARB, V
CALC-LMY, SFT-FRM.

SH- DK GY-BLK, SME GY,
BLKY-PLTY, SBWXY, CARB, TR
CALC FL FRAC & CALCITE, V
CALC-LMY, SFT-FRM.

SH- DK GY-BLK, SME GY,
BLKY-PLTY, SBWXY, CARB, TR
CALC FL FRAC & CALCITE, V
CALC-LMY, SFT-FRM. W/ SME
BENT- LT GY.





SH- DK GY-BLK, SME GY,
BLKY-PLTY, SBWXY, CARB, TR
CALC FL FRAC & CALCITE, V
CALC-LMY, SFT-FRM. W/ SME
BENT- LT GY.

SH- DK GY-BLK, SME GY,
BLKY-PLTY, SBWXY, CARB, TR
CALC FL FRAC & CALCITE, V
CALC-LMY, SFT-FRM. W/ SME
BENT- LT GY.

SH- DK GY-BLK, SME GY,
BLKY-PLTY, SBWXY, CARB, TR
CALC FL FRAC & CALCITE, V
CALC-LMY, SFT-FRM. W/ SME
BENT- LT GY.

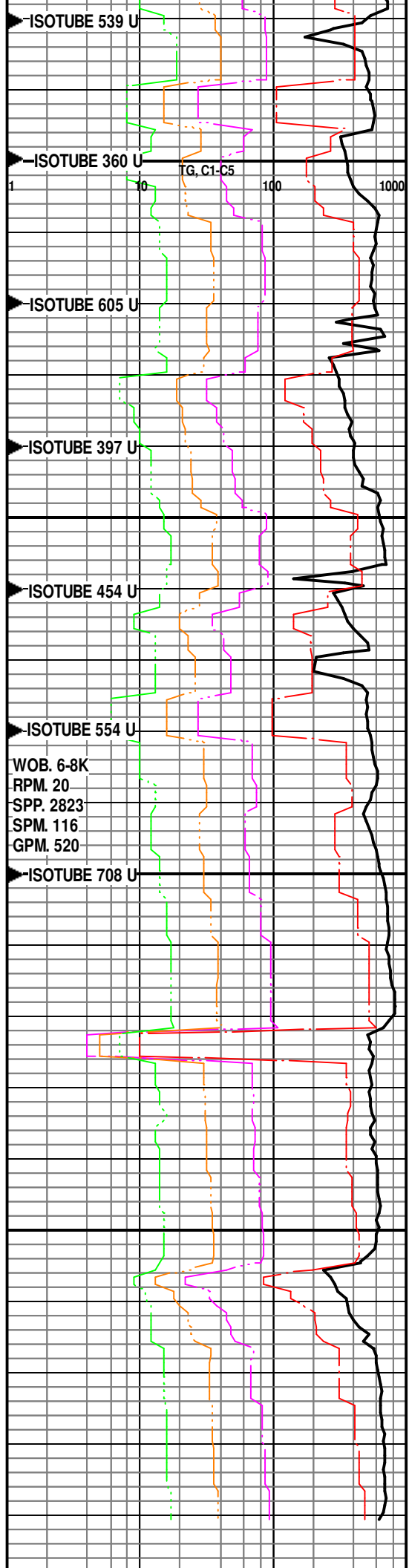
**LANDED THE CURVE
AT 8291'.**

SH- DK GY-BLK, SME GY,
BLKY-PLTY, SBWXY, CARB, TR
CALC FL FRAC & CALCITE, V
CALC-LMY, SFT-FRM. TR BENT-
LT GY.

SH- DK GY-BLK, SME GY,
BLKY-PLTY, SBWXY, CARB, TR
CALC FL FRAC & CALCITE, V
CALC-LMY, SFT-FRM. TR BENT-
LT GY.

SH- DK GY-BLK, SME GY,
BLKY-PLTY, WXY, CARB, TR
CALC FL FRAC & CALCITE, V
CALC-LMY, SFT-FRM. TR BENT-
LT GY.

**TD THE BUILD
SECTION AT 8291'MD**



[illegible]

SECTION AT 8391 MD
ON 8/25/2014 AT 6:48
PM.
DRILLERS DEPTH

Please refer to the Horizontal Log for the remainder of this well

TG, C1-C5

1 10 100 1000