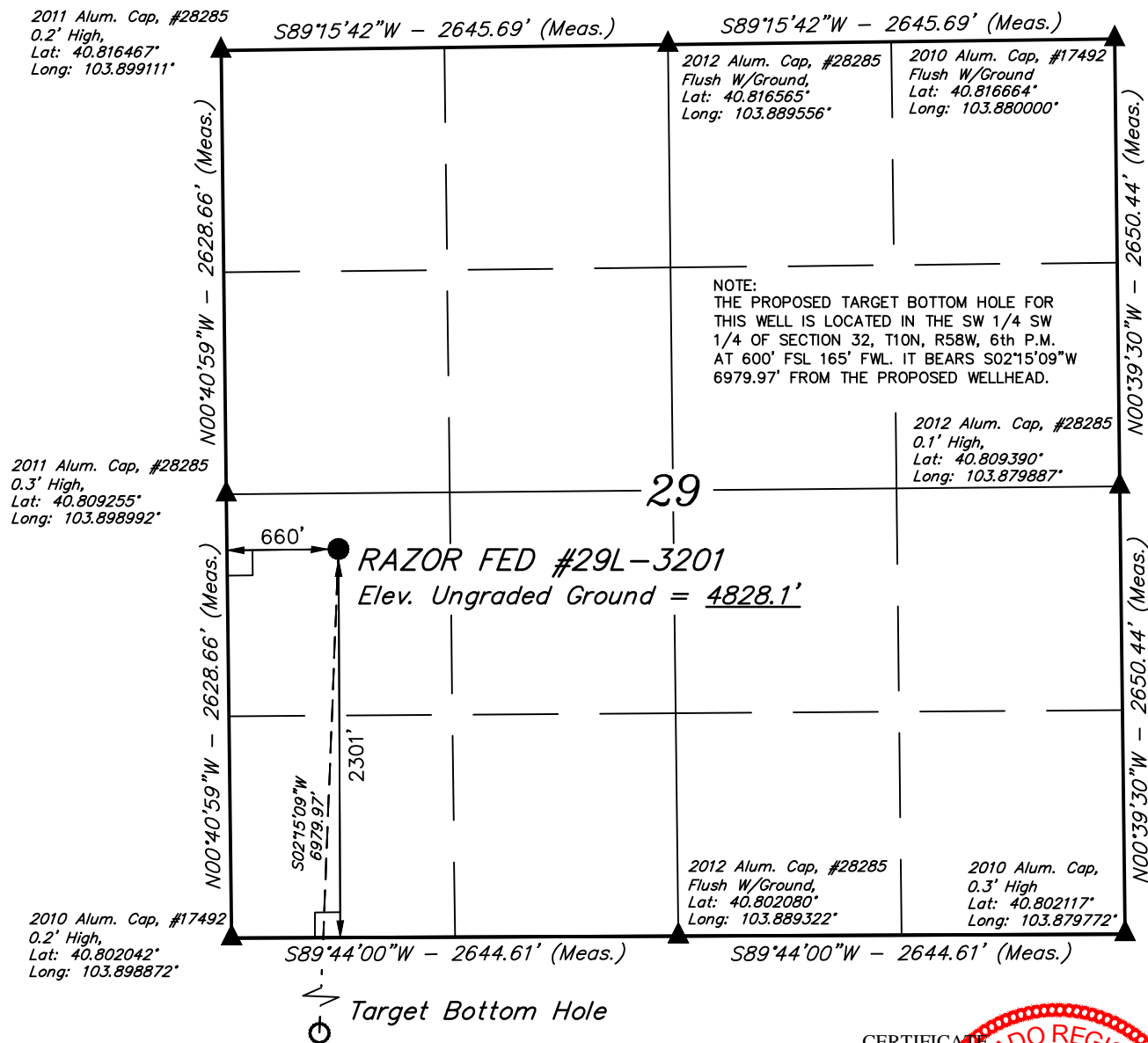


LEGEND:

- = 90° SYMBOL
 ● = PROPOSED WELLHEAD.
 ○ = TARGET BOTTOM HOLE.
 ▲ = SECTION CORNERS LOCATED.

T10N, R58W, 6th P.M.



PDOP = 1.4

NAD 83 (SURFACE LOCATION)

LATITUDE = 40°48'30.12" (40.808366)
 LONGITUDE = 103°53'47.74" (103.896593)

NAD 27 (SURFACE LOCATION)

LATITUDE = 40°48'30.17" (40.808380)
 LONGITUDE = 103°53'45.93" (103.893090)

**BASIS OF BEARINGS**

BASIS OF BEARINGS IS A G.P.S. OBSERVATION

BASIS OF ELEVATION

SPOT ELEVATION LOCATED AT THE NORTHEAST CORNER OF SECTION 15, T9N, R58W, 6th P.M. TAKEN FROM THE GATEHOOK SPRING, QUADRANGLE, COLORADO, WELD COUNTY, 7.5 MINUTE QUAD (TOPOGRAPHIC MAP) PUBLISHED BY THE UNITED STATES DEPARTMENT OF THE INTERIOR, GEOLOGICAL SURVEY. SAID ELEVATION IS MARKED AS BEING 4679 FEET.

CERTIFICATE
 THIS IS TO CERTIFY THAT THE ABOVE PLAT WAS PREPARED FROM FIELD NOTES OF ACTUAL SURVEYS MADE BY ME OR UNDER MY SUPERVISION AND THAT THE SAME ARE TRUE AND CORRECT TO THE BEST OF MY KNOWLEDGE AND BELIEF.

REGISTERED LAND SURVEYOR
 REGISTRATION NO. 28285
 STATE OF COLORADO

05-09-14

WHITING OIL & GAS CORP.

RAZOR FED #29L-3201 (SURFACE LOCATION)
 NW 1/4 SW 1/4, SECTION 29, T10N, R58W, 6th P.M.
 WELD COUNTY, COLORADO

SURVEYED BY: DARREN SHANKS, D.S.	DATE: 04-21-14
DRAWN BY: J.S.	DATE DRAWN: 05-05-14
SCALE: 1" = 1000'	REVISION: 00-00-00
WELL LOCATION PLAT	



UELS, LLC
 Corporate Office * 85 South 200 East
 Vernal, UT 84078 * (435) 789-1017

LEGEND:

└─ = 90° SYMBOL

● = PROPOSED WELLHEAD.

○ = TARGET BOTTOM HOLE.

▲ = SECTION CORNERS LOCATED.

T10N, R58W, 6th P.M.

Surface Location

2010 Alum. Cap, #17492
0.2' High,
Lat: 40.802042°
Long: 103.898872°

S89°44'00"W - 2644.61' (Meas.)

S89°44'00"W - 2644.61' (Meas.)

2012 Alum. Cap, #28285
Flush W/Ground,
Lat: 40.802080°
Long: 103.889322°

2010 Alum. Cap,
0.3' High
Lat: 40.802117°
Long: 103.879772°

N02°22'06"W - 2637.62' (Meas.)

S02°15'09"W
6979.97'

N01°32'07"W - 2640.93' (Meas.)

2012 Alum. Cap, #28285
0.8' Below Ground,
Lat: 40.794810°
Long: 103.898473°

NOTE:
THE PROPOSED TARGET BOTTOM HOLE
BEARS S02°15'09"W 6979.97' FROM THE
PROPOSED WELLHEAD WHICH IS LOCATED IN
THE NW 1/4 SW 1/4 OF SECTION 29, T10N,
R58W, 6th P.M. AT 2301' FSL 660' FWL.

32

2012 Alum. Cap, #28285
0.1' High,
Lat: 40.794873°
Long: 103.879513°

N02°22'06"W
2637.62' (Meas.)

RAZOR FED #29L-3201
Target Bottom Hole

165'

600'

2012 Alum. Cap, #28285
0.6' High,
Lat: 40.787604°
Long: 103.888663°

2010 Alum. Cap,
0.3' Below Ground
Lat: 40.787628°
Long: 103.879253°

N01°32'07"W - 2640.93' (Meas.)

2010 Alum. Cap,
0.5' Below Ground
Lat: 40.787578°
Long: 103.898072°

S89°49'52"W - 2606.35' (Meas.)

S89°49'52"W - 2606.35' (Meas.)

T10N
T9N

NAD 83 (TARGET BOTTOM HOLE)
LATITUDE = 40°47'21.22" (40.789227)
LONGITUDE = 103°53'51.24" (103.897568)
NAD 27 (TARGET BOTTOM HOLE)
LATITUDE = 40°47'21.26" (40.789240)
LONGITUDE = 103°53'49.43" (103.897065)



CERTIFICATE

THIS IS TO CERTIFY THAT THE ABOVE PLAT WAS PREPARED FROM FIELD NOTES OF ACTUAL SURVEYS MADE BY ME OR UNDER MY SUPERVISION AND THAT THE SAME ARE TRUE AND CORRECT TO THE BEST OF MY KNOWLEDGE AND BELIEF.

REGISTERED LAND SURVEYOR
REGISTRATION NO. 28285
STATE OF COLORADO
05-05-14

BASIS OF BEARINGS

BASIS OF BEARINGS IS A G.P.S. OBSERVATION

BASIS OF ELEVATION

SPOT ELEVATION LOCATED AT THE NORTHEAST CORNER OF SECTION 15, T9N, R58W, 6th P.M. TAKEN FROM THE GATEHOOK SPRING, QUADRANGLE, COLORADO, WELD COUNTY, 7.5 MINUTE QUAD (TOPOGRAPHIC MAP) PUBLISHED BY THE UNITED STATES DEPARTMENT OF THE INTERIOR, GEOLOGICAL SURVEY. SAID ELEVATION IS MARKED AS BEING 4679 FEET.

WHITING OIL & GAS CORP.

RAZOR FED #29L-3201 (TARGET BOTTOM HOLE)
SW 1/4 SW 1/4, SECTION 32, T10N, R58W, 6th P.M.
WELD COUNTY, COLORADO

SURVEYED BY: DARREN SHANKS, D.S.	DATE: 04-21-14
DRAWN BY: J.S.	DATE DRAWN: 05-05-14
SCALE: 1" = 1000'	REVISION: 00-00-00
WELL LOCATION PLAT	



UELS, LLC
Corporate Office * 85 South 200 East
Vernal, UT 84078 * (435) 789-1017

