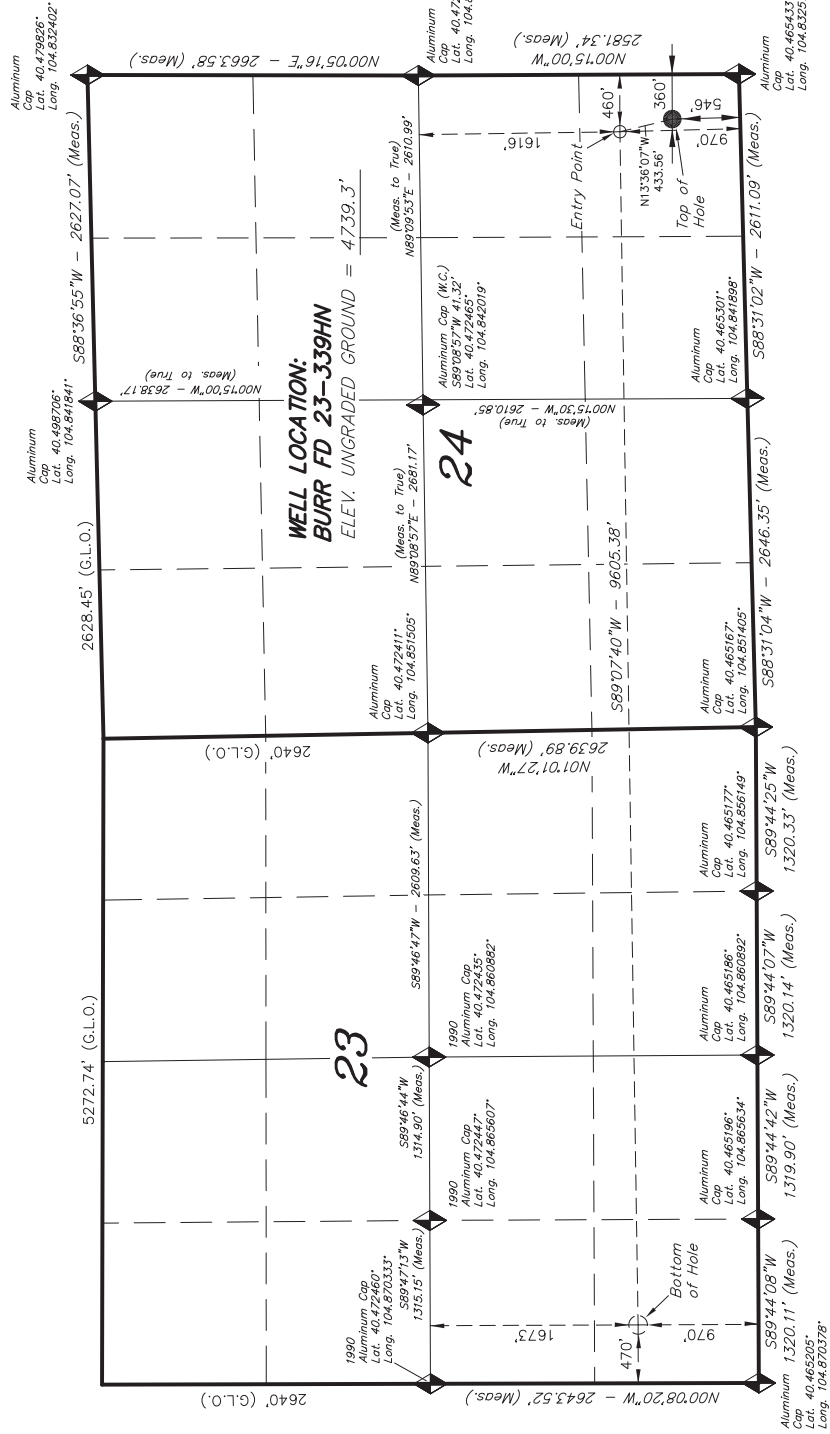


T6N, R67W, 6th P.M.

WELL LOCATION, BURR FD 23-339HN,
LOCATED AS SHOWN IN THE SE 1/4
SE 1/4 OF SECTION 24, T6N, R67W,
6th P.M. WELD COUNTY, COLORADO.

2' TARGET BOTTOM HOLE, BURR FD 23-339HN,
LOCATED AS SHOWN IN THE SW 1/4 SW 1/4
OF SECTION 23, T6N, R67W, 6th P.M.
WELD COUNTY, COLORADO.



NOTES:

1. Well footages are measured at right angles to the Section Lines.
2. Bearings are based on Global Positioning Satellite observations.
3. G.P.S. Operator: C. Stewart, (PDOP)

IMPROVEMENT NOTE:

See addendum to legal plat (Sheet 2a & 2b) for visible improvements within 500' of the proposed location.

THIS IS TO CERTIFY THAT THE ABOVE PLAT WAS PREPARED FROM FIELD NOTES OF RECONNAISSANCE MADE BY ME OR UNDER MY SUPERVISION. THE LOCATION HAS BEEN STAKED ON THE GROUND, AS SHOWN ON THE PLAT, AND THAT THE SAME ARE TRUE AND CORRECT TO THE BEST OF MY KNOWLEDGE AND BELIEF. # 30125

8. David L. S. # 30125
REGISTERED LAND SURVEYOR
REGISTRATION No. 30125
STATE OF COLORADO

TRI STATE LAND SURVEYING & CONSULTING
180 NORTH VERNAL AVE. — VERNAL, UTAH 84078
(435) 781-2501

NAD 83 (SURFACE LOCATION)		NAD 83 (ENTRANCE POINT)		NAD 83 (BOTTOM HOLE LOCATION)	
LATITUDE = 42°52'00.89"	(40.866914)	LATITUDE = 40°28'05.06"	(40.466072)	LATITUDE = 40°28'04.31"	(40.467864)
LONGITUDE = 104°50'01.70"	(104.833805)	LONGITUDE = 104°50'02.97"	(104.833160)	LONGITUDE = 104°52'07.22"	(104.868675)
NAD 27 (SURFACE LOCATION)		NAD 27 (ENTRANCE POINT)		NAD 27 (BOTTOM HOLE LOCATION)	
LATITUDE = 40°28'00.96"	(40.466937)	LATITUDE = 40°28'05.13"	(40.466091)	LATITUDE = 40°28'04.38"	(40.467882)
LONGITUDE = 104°49'59.80"	(104.833279)	LONGITUDE = 104°50'01.08"	(104.833834)	LONGITUDE = 104°52'05.35"	(104.868145)

BASIS OF ELEV; Elevations are based on an N.G.S. OPUS Correction. LOCATION: LAT. 40°27'42.74" LONG. 104°51'11.32" (Tristate Aluminum Cap GW1) NAVD 88 Elev. 4760.86'

DATE SURVEYED: 07-08-14	SURVEYED BY: C.S.	SHEET 1e
DATE DRAWN: 07-13-14	DRAWN BY: R.V.C.	
REVISD: 08-21-14	M.W. SCALE: 1" = 1000'	